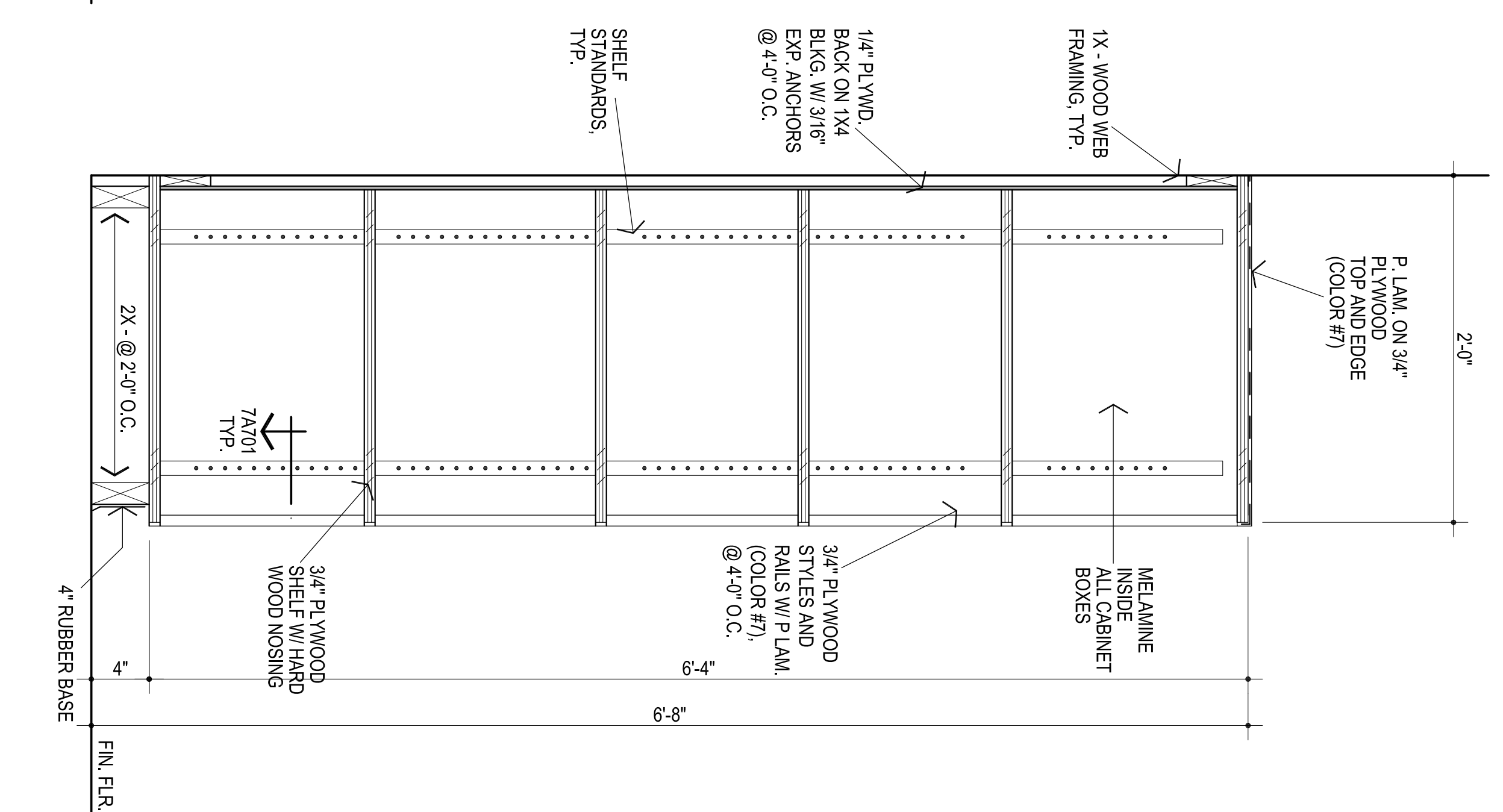
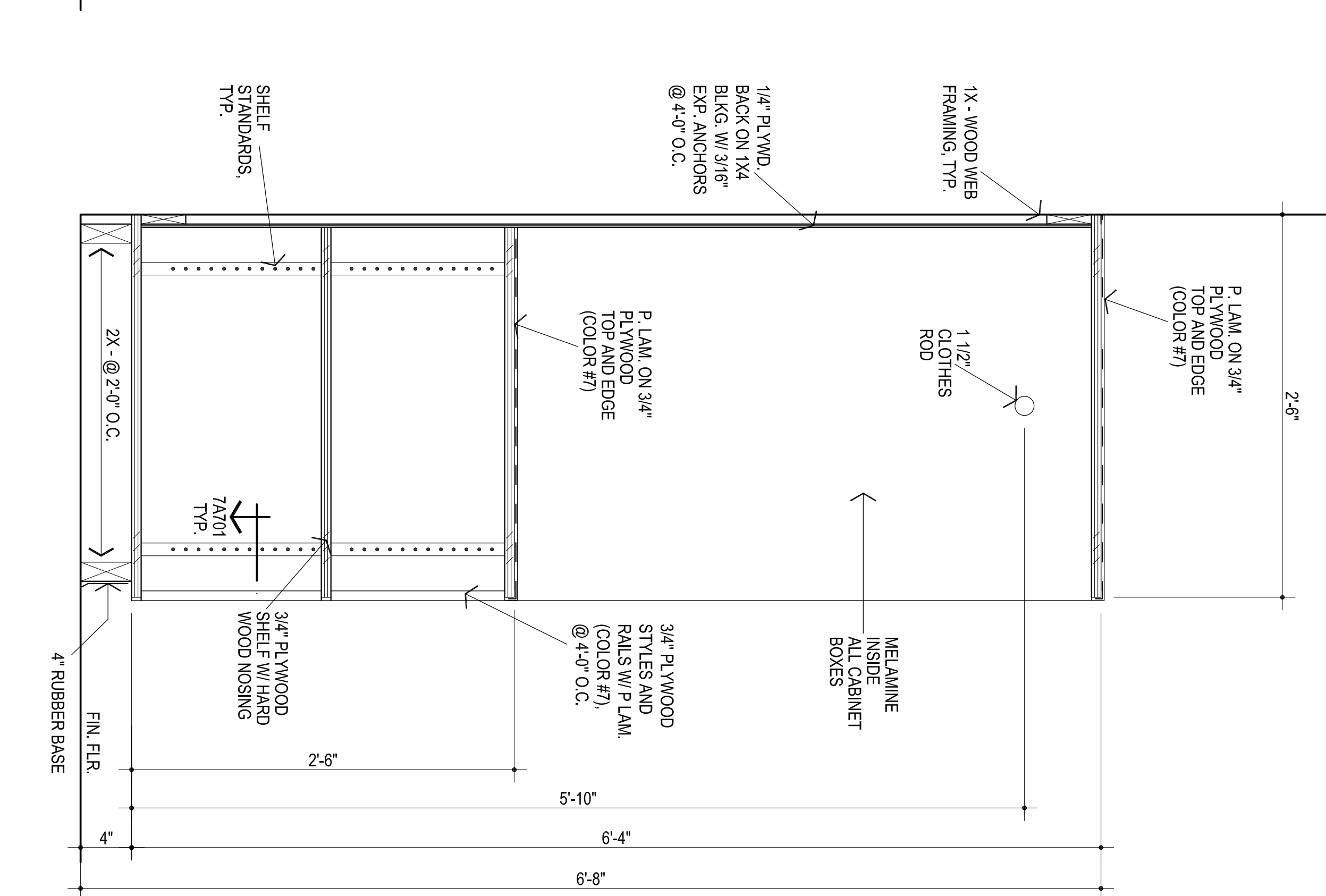


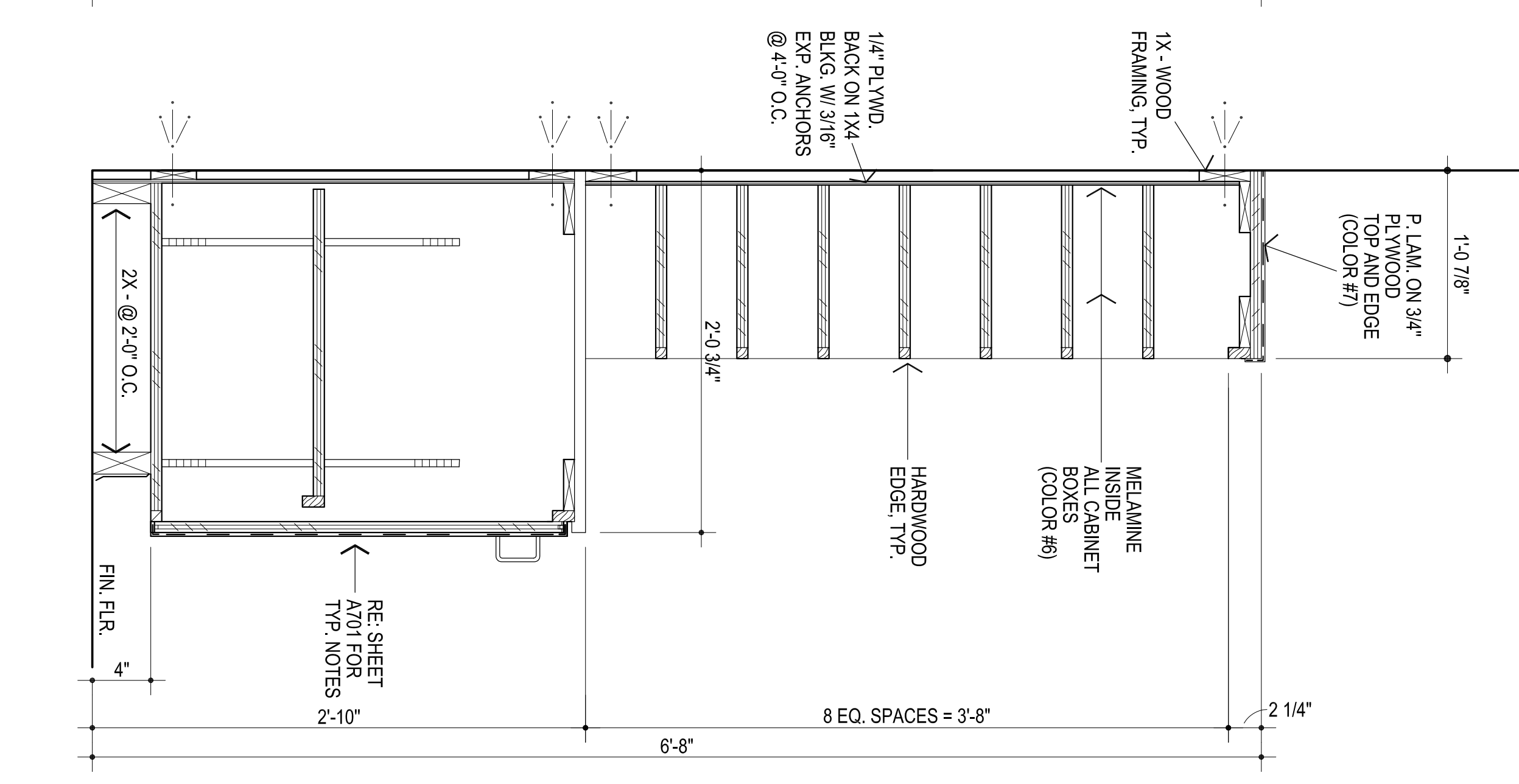
1 BASE & WALL CABINET
1 1/2" = 1'-0"



2 SHELVING
1 1/2" = 1'-0"



3 SHELVING
1 1/2" = 1'-0"



4 SECTION COUNTER
1 1/2" = 1'-0"

FRAMELESS CABINET / EUROPEAN
CONSTRUCTION IS ACCEPTABLE

AGP
the Abila Griffin
Partnership L.L.C.

313 S. E. 5th Street
MOORE, OK, 73160
ACGP@theACGP.net
www.theACGP.net



CG
drawn by
MA
checked by
JANUARY 2025
date
revisions

MOORE
PUBLIC SCHOOLS

WINDING CREEK
ELEMENTARY SCHOOL
MILLWORK
REPLACEMENT

A702

Sheet no.:
OWNERSHIP USE OF DOCUMENTS:
AGP EXPRESSLY RESERVES ITS
COPYRIGHT AND OTHER PROPERTY
RIGHTS OF ALL PLANS AND DRAWINGS
DESIGNED AND/OR PRODUCED. PLANS
AND DRAWINGS ARE NOT TO BE
REPRODUCED IN ANY FORM OR MANNER
WITHOUT THE EXPRESS WRITTEN
CONSENT OF AGP.