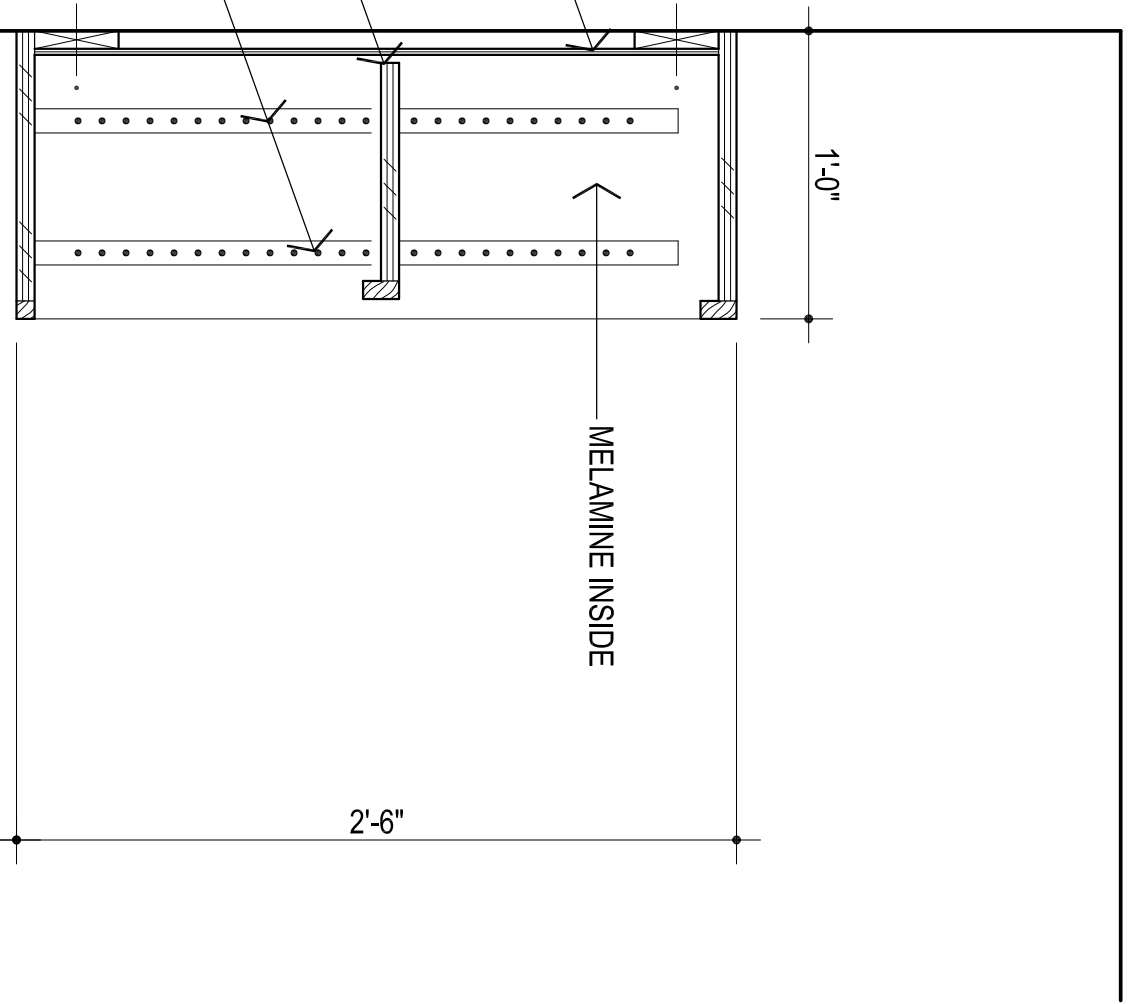
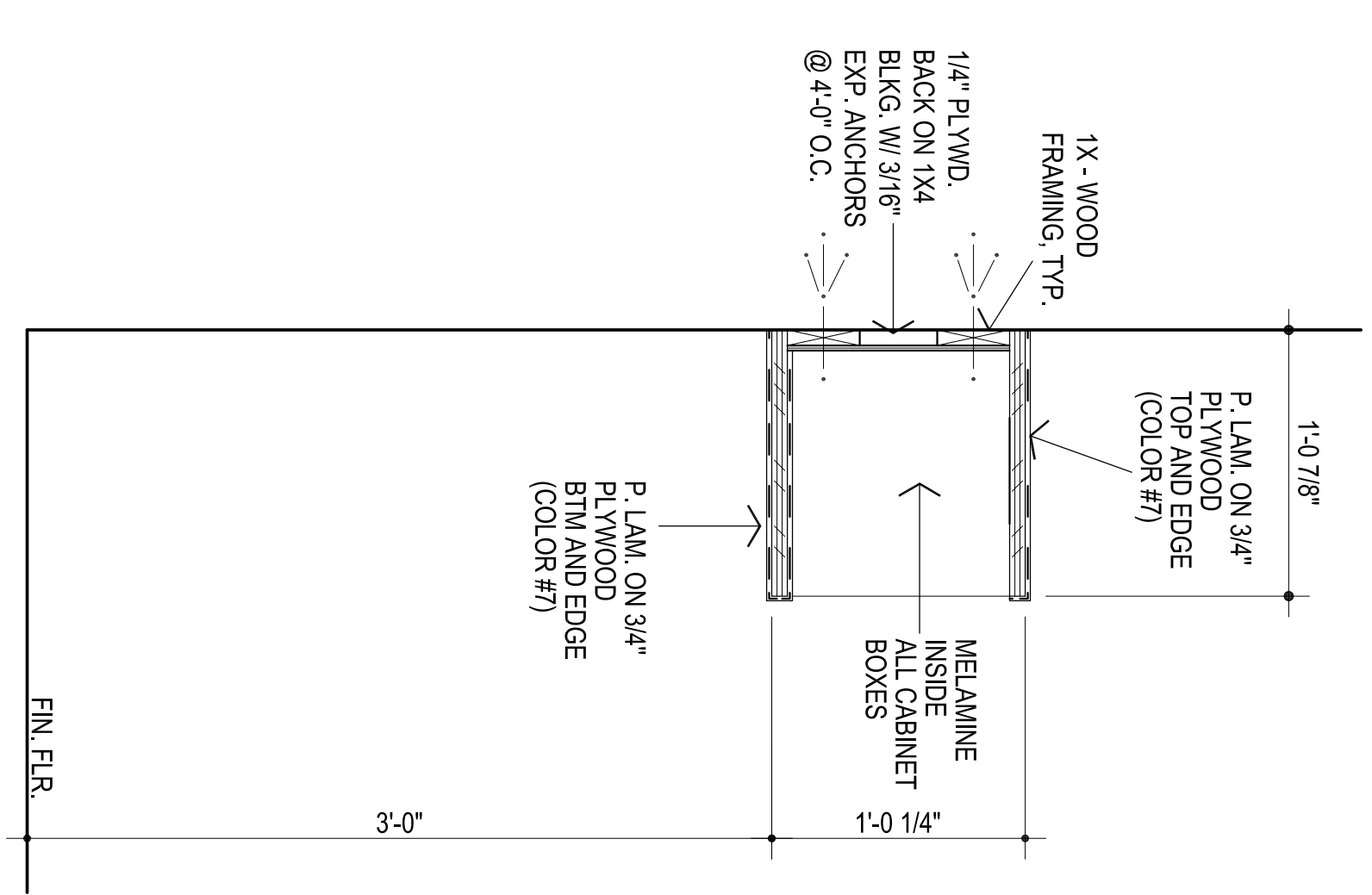


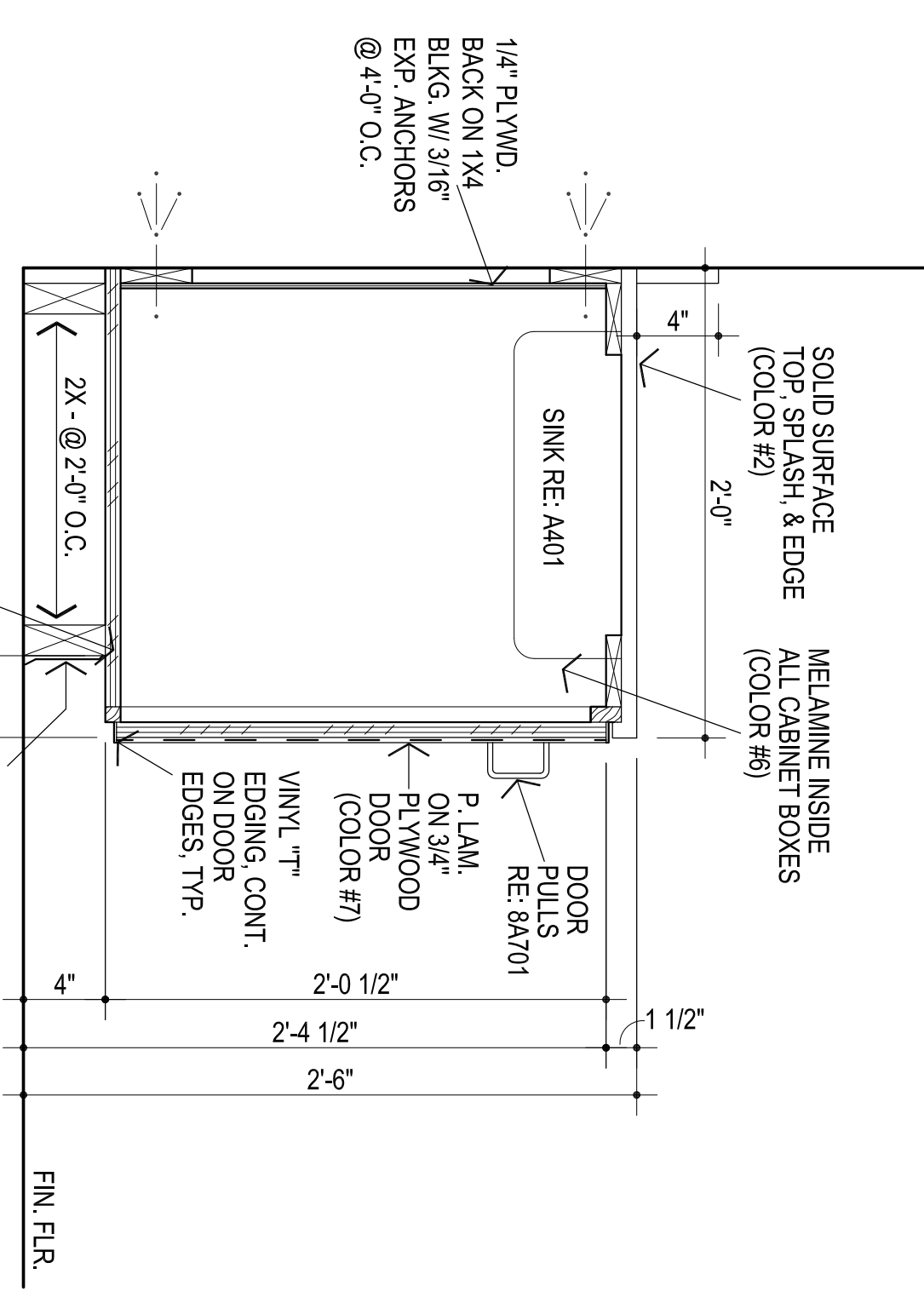
1 BASE CABINET W/ DRAWERS
1 1/2" = 1'-0"



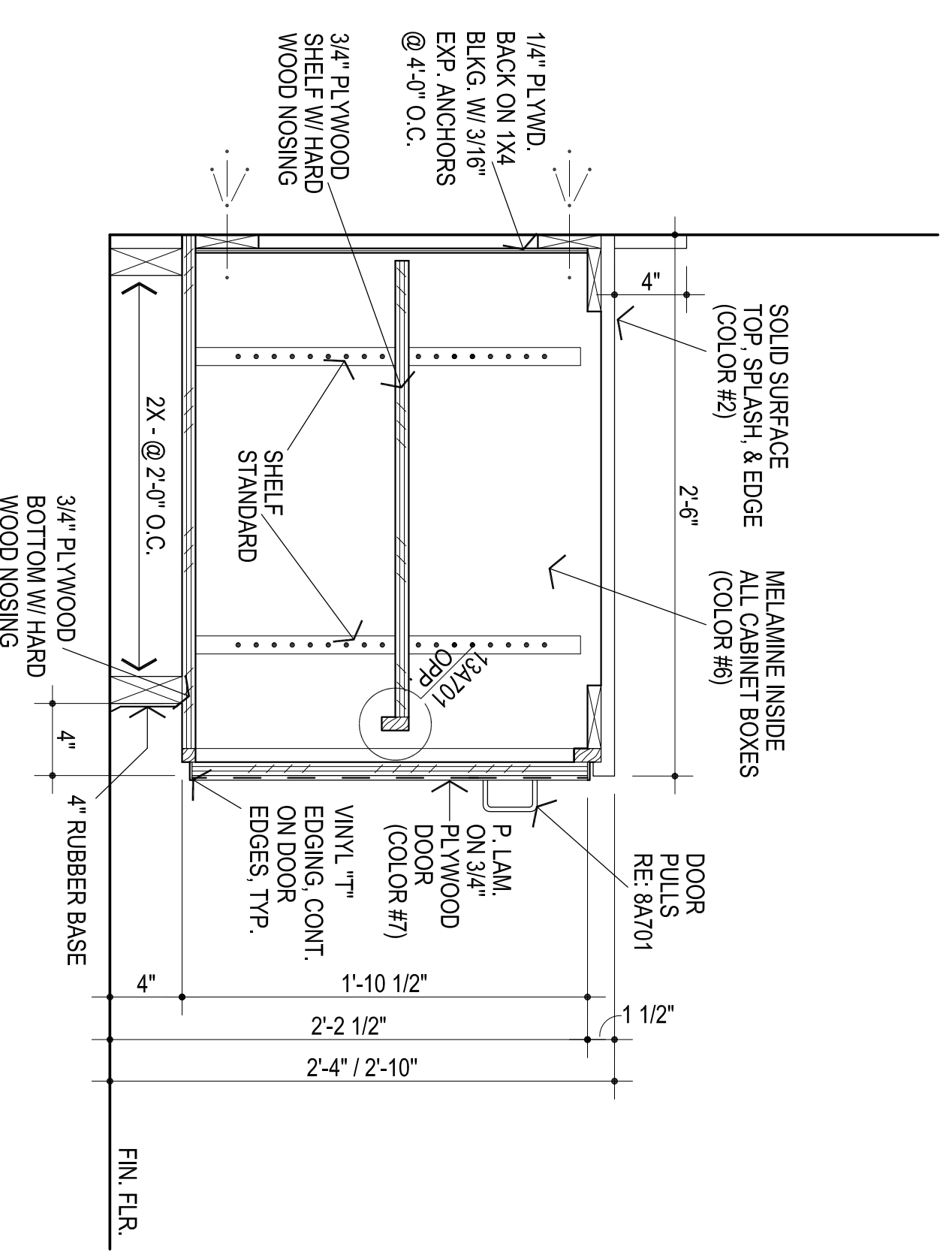
3 UPPER OPEN SHELVING
1 1/2" = 1'-0"



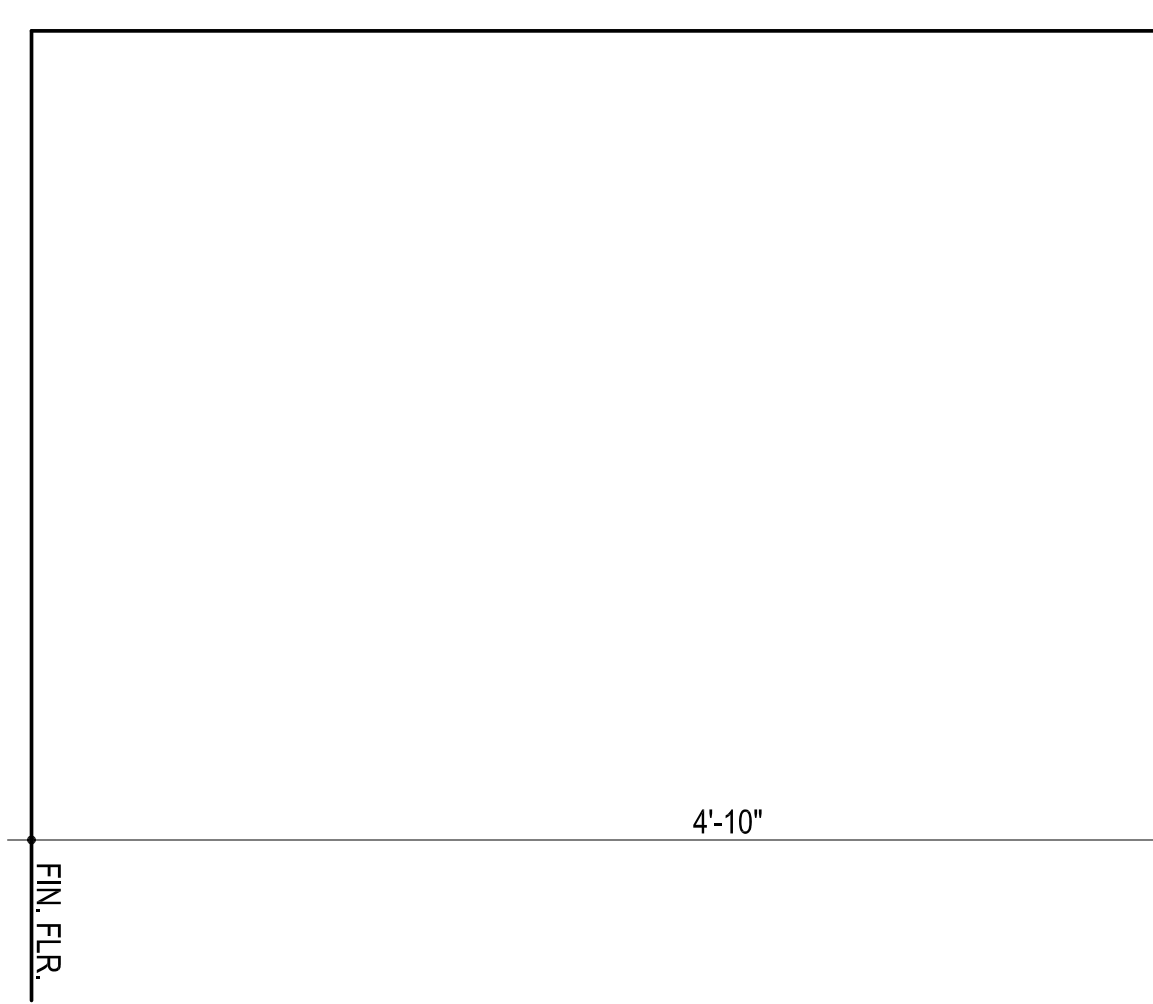
4 SECTION
1 1/2" = 1'-0"



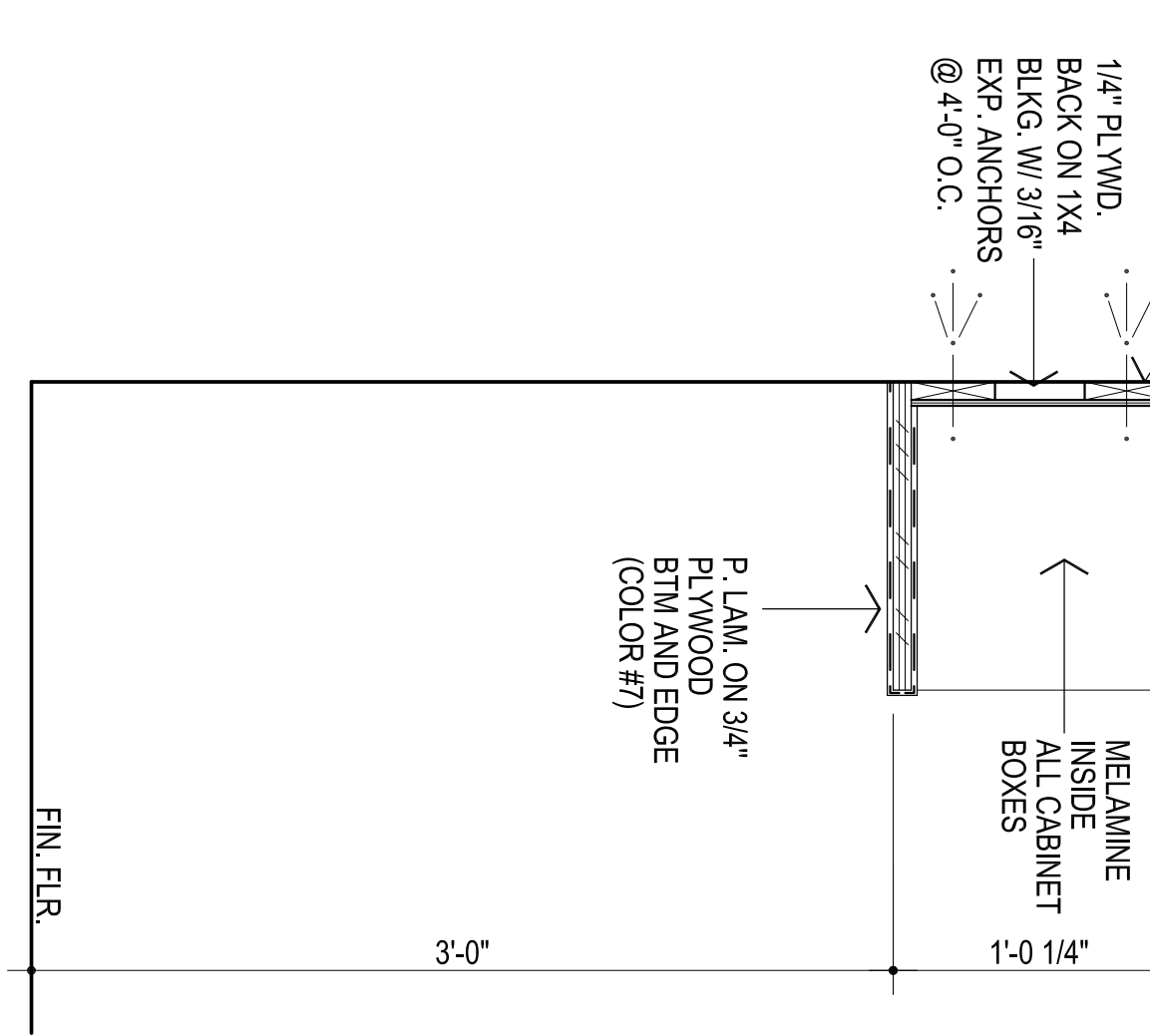
5 SINK SECTION
1 1/2" = 1'-0"



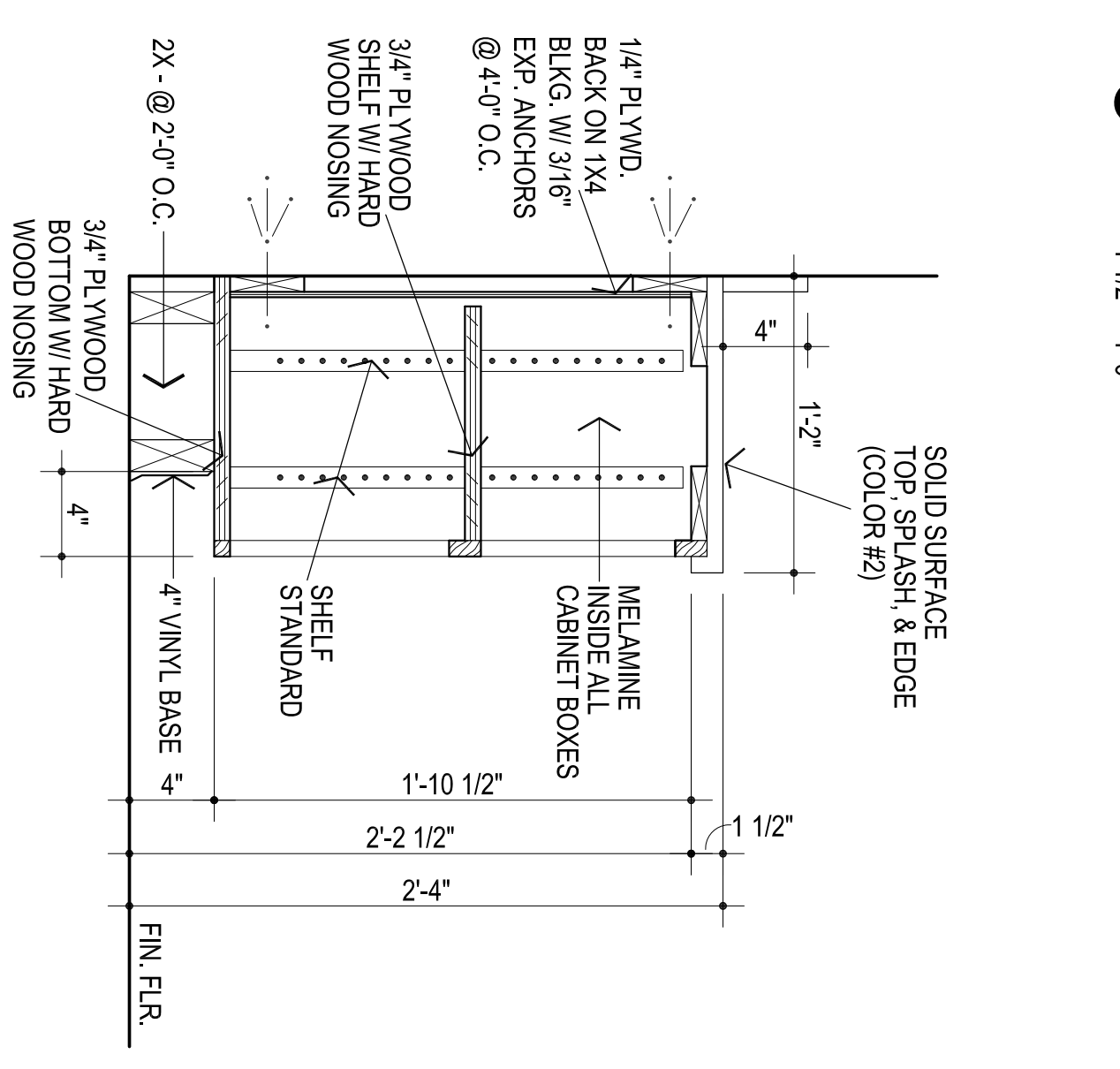
2 BASE CABINET
1 1/2" = 1'-0"



3 UPPER OPEN SHELVING
1 1/2" = 1'-0"

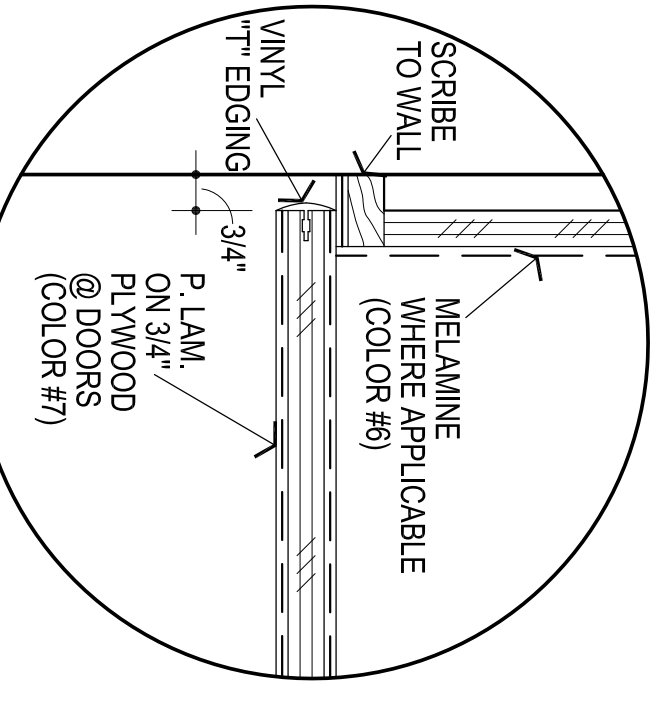


4 SECTION
1 1/2" = 1'-0"

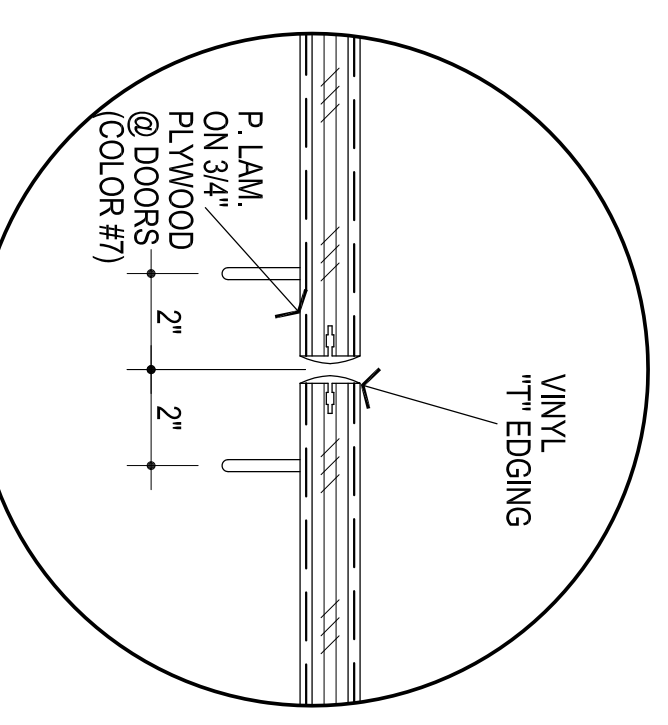


6 BASE CABINET W/ SHELVES
1 1/2" = 1'-0"

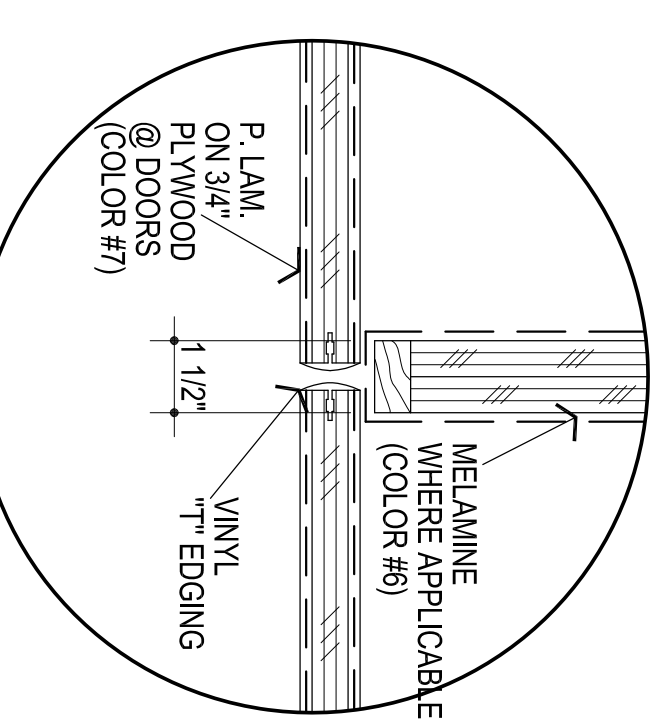
FRAMELESS CABINET / EUROPEAN CONSTRUCTION IS ACCEPTABLE



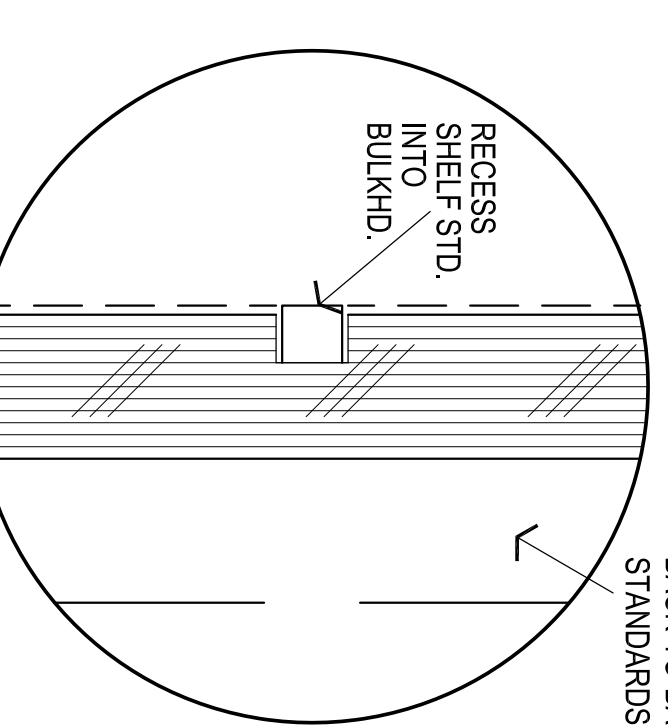
7 DOOR @ WALL



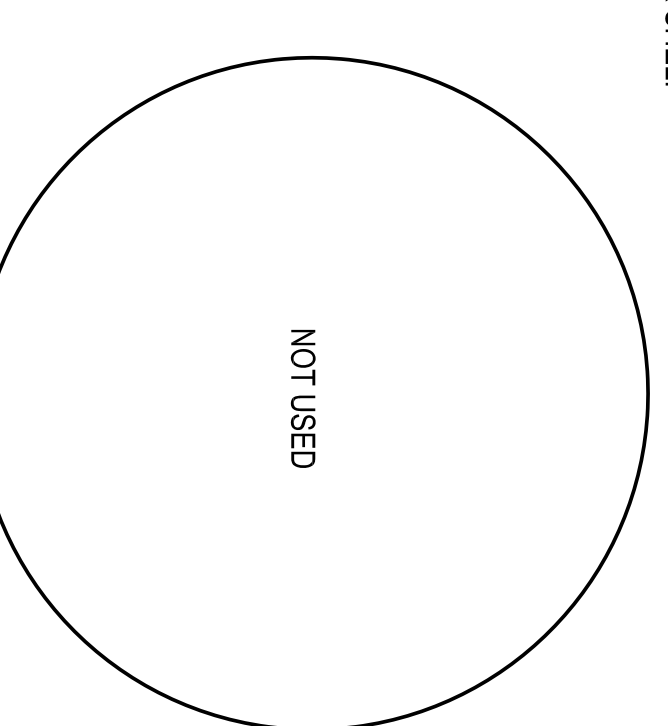
8 PULLS



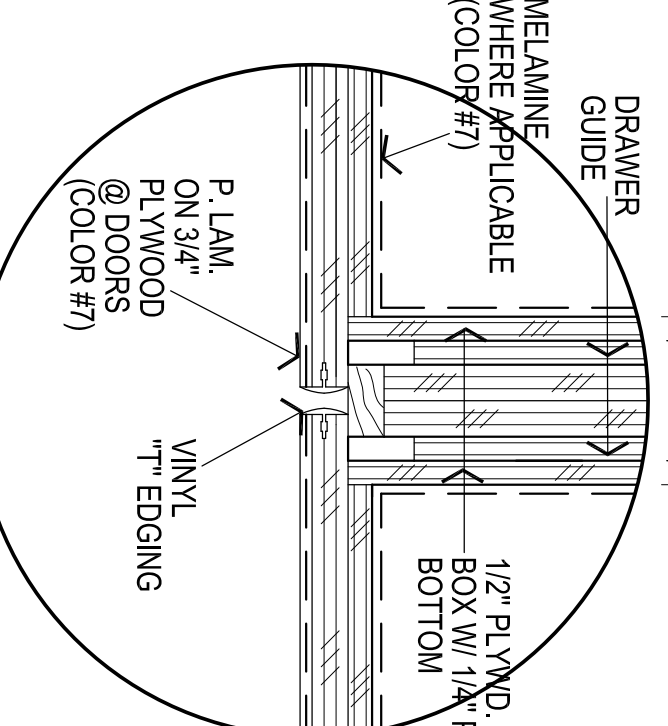
9 DOORS @ STILE



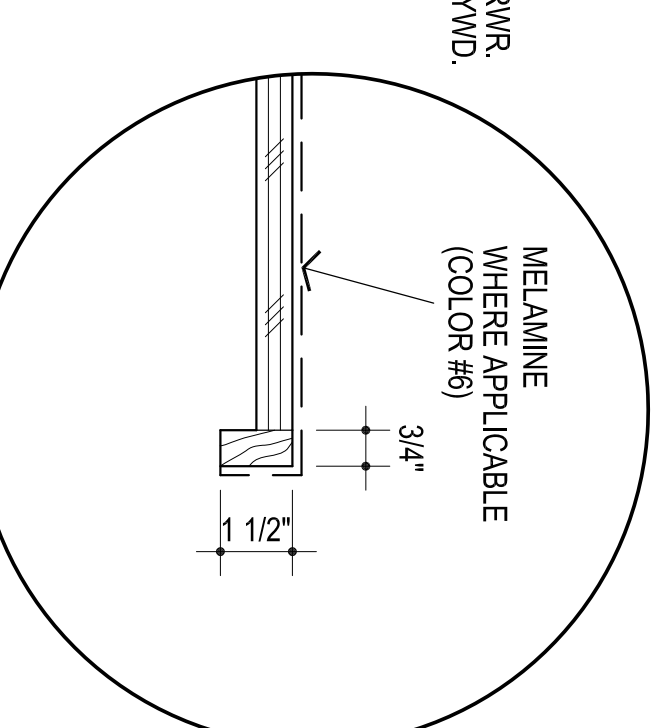
10 RECESSED STANDARDS



11 NOT USED



12 DRWR. TO DRWR.



13 SHELF EDGE



CG	
drawn by	MA
checked by	JANUARY 2025
date	
revisions	



WINDING CREEK
ELEMENTARY SCHOOL
MILLWORK
REPLACEMENT

Sheet No.:
A701

OWNERSHIP USE OF DOCUMENTS:
AGP EXPRESSLY RESERVES ITS
COPYRIGHT AND OTHER PROPERTY
RIGHTS OF ALL PLANS AND DRAWINGS
DESIGNED AND/OR PRODUCED. PLANS
AND DRAWINGS ARE NOT TO BE
REPRODUCED IN ANY FORM OR MANNER
WITHOUT THE EXPRESS WRITTEN
CONSENT OF AGP.

AGP
the Abia Griffin
Partnership L.L.C.
313 S. E. 5th Street
MOORE, OK. 73160
405.735.3477
AGP@theACP.net
www.theACP.net