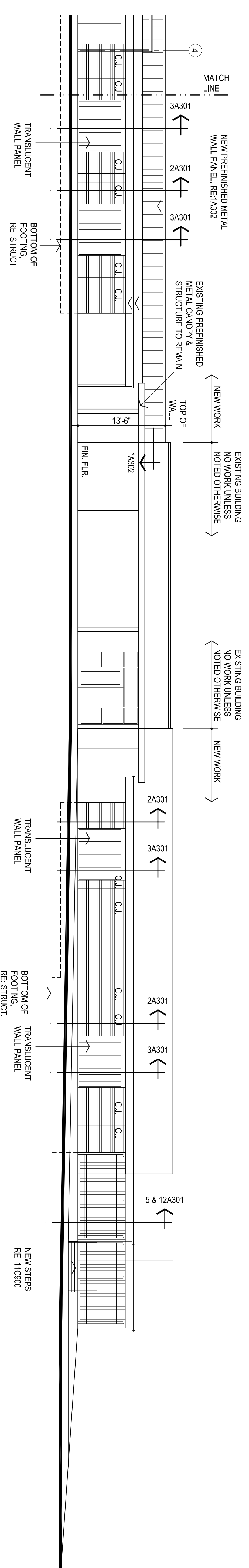
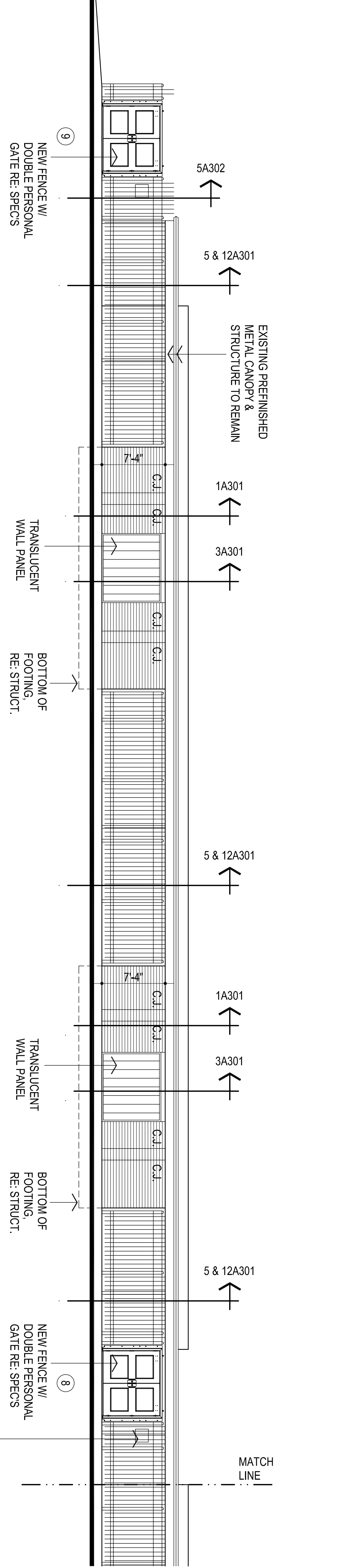


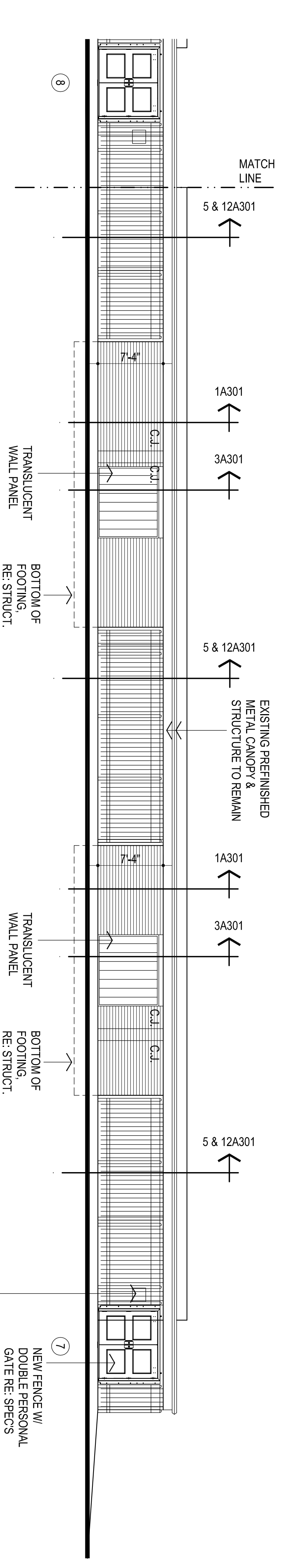
1
SOUTH ELEVATION
1/8" = 1'-0"



1
SOUTH ELEVATION - CONT.
1/8" = 1'-0"



2
WEST ELEVATION
1/8" = 1'-0"



2
WEST ELEVATION - CONT.
1/8" = 1'-0"

AGP
the Abla Griffin Partnership L.L.C.
201 N. BROADWAY
SUITE 210
MOORE, OK. 73160
405.735.3477
ACGP@theAGP.net
www.theAGP.net

KFC ENGINEERING
STRUCTURAL
SALAS OBRIEN
MECHANICAL ELECTRICAL

STATE OF OKLAHOMA
MICHAEL L. ABLA
2839
3/6/24

CS
drawn by
MA
checked by
FEBRUARY 2024
date
revisions

MOORE PUBLIC SCHOOLS
BOARD OF EDUCATION
MOORE, OKLAHOMA
MOORE Public Schools
LEARNING FOR LIFE

WINDING CREEK
ELEMENTARY SCHOOL
SECURITY UPGRADES

A201

OWNERSHIP USE OF DOCUMENTS:
AGP EXPRESSLY RESERVES ITS
COPYRIGHT AND OTHER PROPERTY
RIGHTS OF ALL PLANS AND DRAWINGS
DESIGNED AND/OR PRODUCED BY AGP.
REPRODUCED IN ANY FORM OR MANNER
WITHOUT THE EXPRESSED WRITTEN
CONSENT OF AGP.