



P. O. Box 892245 • OKC, OK 73189
OFFICE: 405-735-3992 • CELL: 405-570-7881

Request For Information

Date	May 11 th , 2026
Project	Westmoore HS Entry Upgrades
Subcontractor / Supplier	
	Address:
Manufacturer	
Spec. Section	RFI #3 Millwork Hardware Sub Request
Notes Below	
<p>Clay / Mike please see the RFI substitute request from Lakewood Cabinetry below.</p> <p>See below for substitute documentation.</p> <p>Thanks</p> <p>The substitutions for the hinges and the drawer glides as submitted are acceptable. (AGP)</p>	

Submitted By: Chris Dysart

CSI Form 1.5C

SUBSTITUTION REQUEST (During the Bid Period)

Project: MSP Westmoore HS Entry Upgrades Substitution Request Number: 1
12613 South Western OKC 73170 From: Lakewood Cabinetry Inc
To: Abla Griffin Partnership Date: 05/11/2026
c/o Omni Construction / Attn: Chris Dysart A/E Project Number:
Re: Hardware Contract For: Millwork

Specification Title: Wood & Plastics Description: Hinges: Blum 170° Hinges
Section: 06410 Page: 6 Article/Paragraph: 2.09/F

Proposed Substitution: Blum 120° Self-Closing Hinge
Manufacturer: Blum Address: Stanley NC Phone: 704-827/1345
Trade Name: Model No.: 71T5580

Attached data includes product description, specifications, drawings, photographs, and performance and test data adequate for evaluation of the request; applicable portions of the data are clearly identified.
Attached data also includes a description of changes to the Contract Documents that the proposed substitution will require for its proper installation.

- The Undersigned certifies:
Proposed substitution has been fully investigated and determined to be equal or superior in all respects to specified product.
Same warranty will be furnished for proposed substitution as for specified product.
Same maintenance service and source of replacement parts, as applicable, is available.
Proposed substitution will have no adverse effect on other trades and will not affect or delay progress schedule.
Proposed substitution does not affect dimensions and functional clearances.
Payment will be made for changes to building design, including A/E design, detailing, and construction costs caused by the substitution.

Submitted by: Kim Olson
Signed by: Kimela Olson
Firm: Lakewood Cabinetry Inc
Address: PO Box 388
Langley OK 74350
Telephone: 918-782-2203

A/E's REVIEW AND ACTION
Substitution approved - Make submittals in accordance with Specification Section 01 25 00 Substitution Procedures.
Substitution approved as noted - Make submittals in accordance with Specification Section 01 25 00 Substitution Procedures.
Substitution rejected - Use specified materials.
Substitution Request received too late - Use specified materials.

Signed by: Date:

Supporting Data Attached: [] Drawings [X] Product Data [] Samples [] Tests [] Reports []

Product details

CLIP top standard hinge 120°, horizontal, with spring, Boss: Screw-on



Part number	71T5550
Item number	03680333
Colour / finish	Nickel plated
Packaging quantity	250
Weight per 1,000 Pcs in kg	67.8
EAN code	9002617448887
UPC code	

Technical attributes

Attribute	Value
application	standard hinge
Cranking	horizontal
Opening angle	120
Closing mechanism	with spring
Boss material	Steel boss
boss finish	Nickel plated
Boss assembly	Screw-on
Flange width	57
Flange length	20
Flange height	3.2
diametre hinge boss drilling	35
distance between drillings	45
eccentric position of fixing holes to hinge boss hole	9.5
boss depth	12.5
boss drilling depth	12.6
Minimum drilling distance	3
Maximum drilling distance	6
arm material	Steel
arm finish	Nickel plated
collision measurement (hinge arm height)	20.5
Fixed dimension / factory setting	11
type of side adjustment	With screw
Side adjustment	+/- 2 mm
type of depth adjustment	convenient with spiral screw
Depth adjustment	plus 3/minus 2 mm
Gap	1.5
Item package	1 piece
packaging	industrial packing

CSI Form 1.5C

SUBSTITUTION REQUEST (During the Bid Period)

Project: MSP Westmoore HS Entry Upgrades Substitution Request Number: 2
12613 South Western OKC 73170 From: Lakewood Cabinetry Inc
To: Abla Griffin Partnership Date: 05/11/2026
c/o Omni Construction / Attn: Chris Dysart A/E Project Number:
Re: Hardware Contract For: Millwork

Specification Title: Wood & Plastics Description: Drawer Slides: K&V KV1485 Full Extension BB Slide
Section: 06410 Page: 6 Article/Paragraph: 2.09/E

Proposed Substitution: Pro 100 series 100lb Full Extension Ball Bearing Slide
Manufacturer: Wurth Address: Phone:
Trade Name: Model No.:

Attached data includes product description, specifications, drawings, photographs, and performance and test data adequate for evaluation of the request; applicable portions of the data are clearly identified.
Attached data also includes a description of changes to the Contract Documents that the proposed substitution will require for its proper installation.

The Undersigned certifies:

- Proposed substitution has been fully investigated and determined to be equal or superior in all respects to specified product.
Same warranty will be furnished for proposed substitution as for specified product.
Same maintenance service and source of replacement parts, as applicable, is available.
Proposed substitution will have no adverse effect on other trades and will not affect or delay progress schedule.
Proposed substitution does not affect dimensions and functional clearances.
Payment will be made for changes to building design, including A/E design, detailing, and construction costs caused by the substitution.

Submitted by: Kim Olson
Signed by: Kimela Olson
Firm: Lakewood Cabinetry Inc
Address: PO Box 388
Langley OK 74350
Telephone: 918-782-2203

A/E's REVIEW AND ACTION

- Substitution approved - Make submittals in accordance with Specification Section 01 25 00 Substitution Procedures.
Substitution approved as noted - Make submittals in accordance with Specification Section 01 25 00 Substitution Procedures.
Substitution rejected - Use specified materials.
Substitution Request received too late - Use specified materials.

Signed by: Date:

Supporting Data Attached: Drawings Product Data Samples Tests Reports

PRO 100 SERIES

100 lb BALL BEARING SLIDE



- **Quality at an affordable price**
- **Backed by limited lifetime warranty**
- **Inventoried locally for expedient delivery**
- **Exclusively from Würth Distributors**

- Front slotted hole for mounting directly to face frame
- Full extension, non-handed design
- Lever disconnect
- Continuous bearings ensure smooth and quiet performance
- Bearing detent holds bearing cage to front of slide when drawer is removed

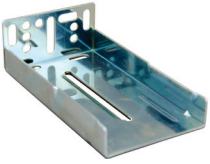


Series: PRO 100
 Type: Full Extension Ball Bearing
 Mounting: Side
 Weight Rating: 100 lbs.
 Clearance: 1/2" +1/32" -0
 Material: Cold Rolled Steel
 Hole Pattern: 32mm
 Finish: Bright Zinc
 Industry Rated: BHMA, KCMA, BIFMA

PART #	Nominal Length	Actual Length	Extension	Pairs Per Box
PRO100-10BM	10"	250mm	250mm	10
PRO100-12BM	12"	300mm	300mm	10
PRO100-14BM	14"	350mm	350mm	10
PRO100-16BM	16"	400mm	400mm	10
PRO100-18BM	18"	450mm	450mm	10
PRO100-20BM	20"	500mm	500mm	10
PRO100-22BM	22"	550mm	550mm	10
PRO100-24BM	24"	600mm	600mm	10
PRO100-26BM	26"	650mm	650mm	10
PRO100-28BM	28"	700mm	700mm	10

PRO 100 SERIES

OPTIONAL ITEMS



Rear Bracket PRO100RB

- Packaging: 100 pc per box
- Sold per each
- Two required per pair of slides

Available
NOW



Floating Rear Bracket PRO100FLOATER2

- Includes left and right bracket
- Extends each slide reach by a maximum of 48mm (1 7/8")

Available
**FEBRUARY
2012**

- Use Euro screw, #7 or #8 pan head screw for cabinet member installation
- Use #7 or #8 pan head screw for drawer member installation

