



|             |            |
|-------------|------------|
| CC          | drawn by   |
| BB          | checked by |
| AUGUST 2025 | date       |
|             | revisions  |
|             |            |
|             |            |
|             |            |

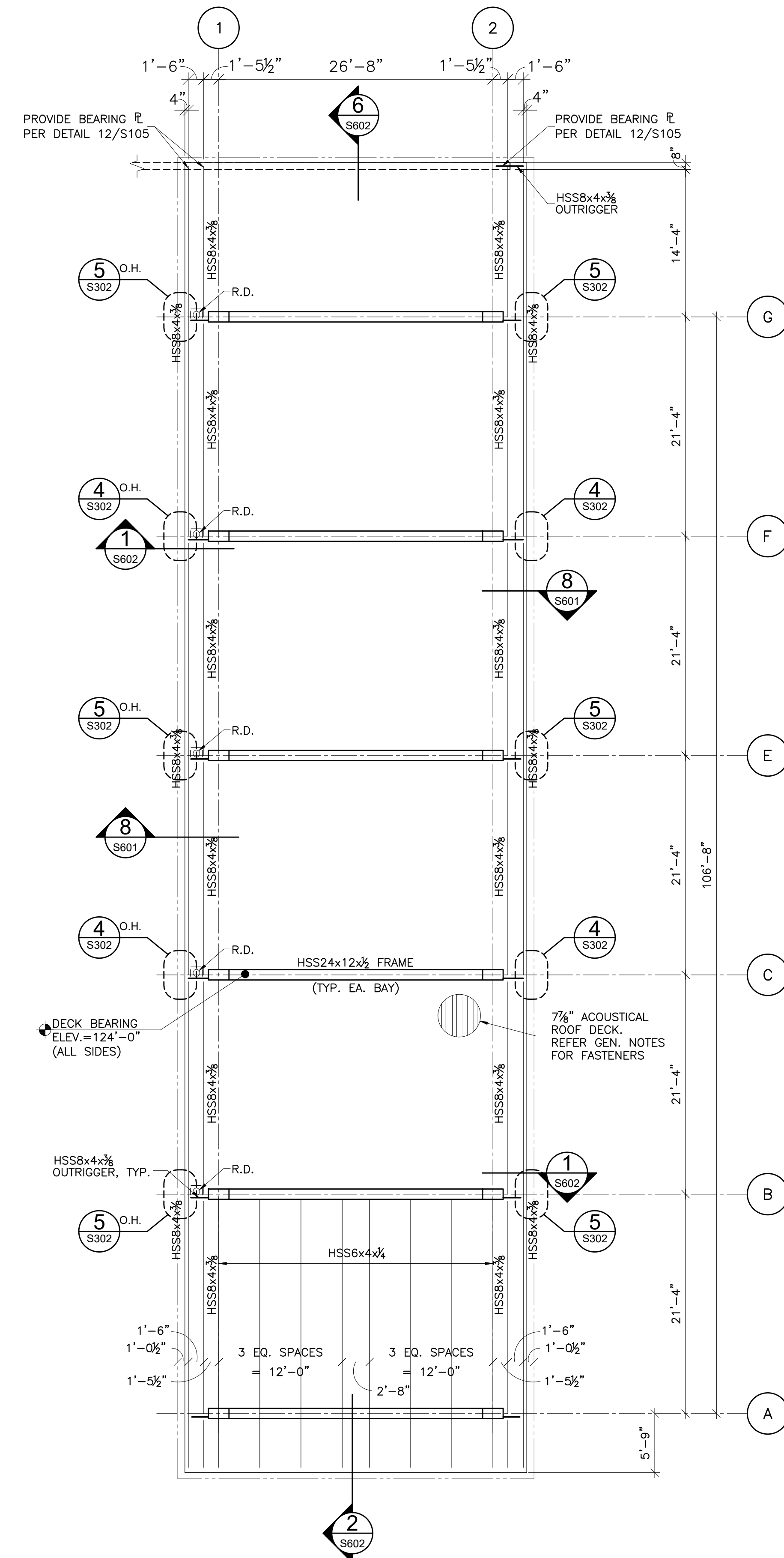


WESTMOORE HIGH SCHOOL ENTRY UPGRADES

sheet no:

## S302

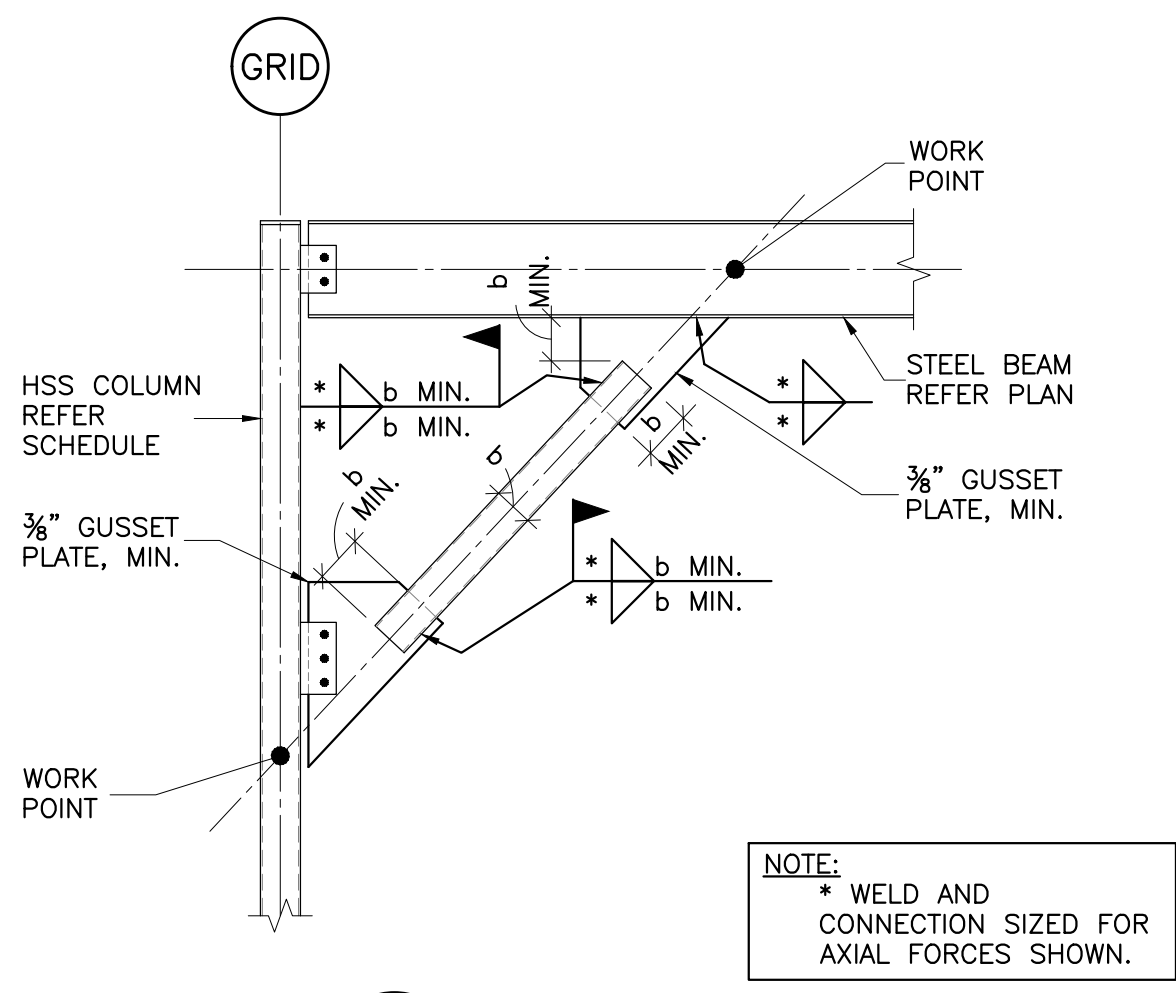
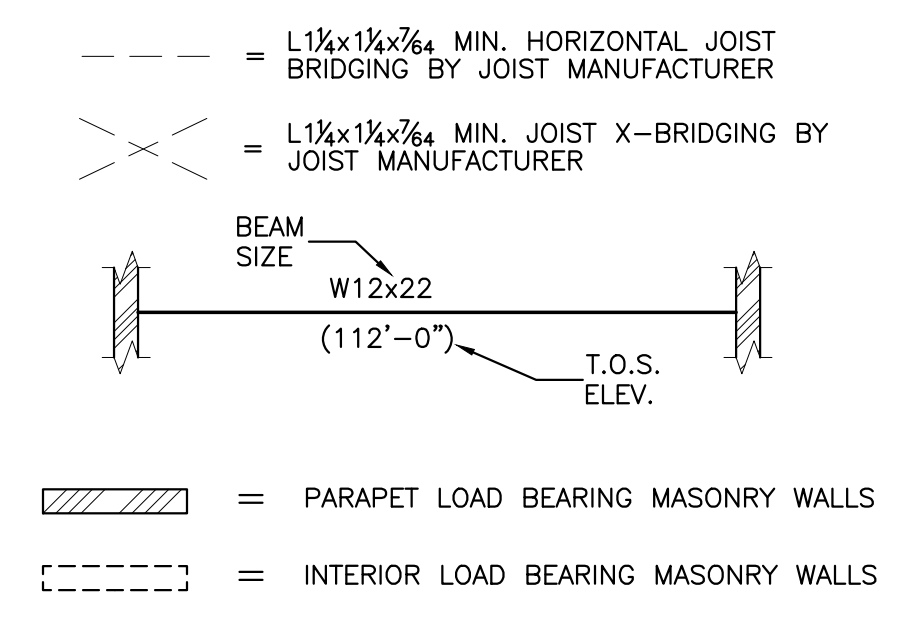
OWNERSHIP USE OF DOCUMENTS:  
AGP EXPRESSLY RESERVES ITS COPYRIGHT AND OTHER PROPERTY RIGHTS OF ALL PLANS AND DRAWINGS DESIGNED AND/OR PRODUCED. PLANS AND DRAWINGS ARE NOT TO BE REPRODUCED IN ANY FORM OR MANNER WITHOUT THE EXPRESSED WRITTEN CONSENT OF AGP.



**1 HI ROOF FRAMING PLAN**  
S302 SCALE: 1/8"=1'-0"

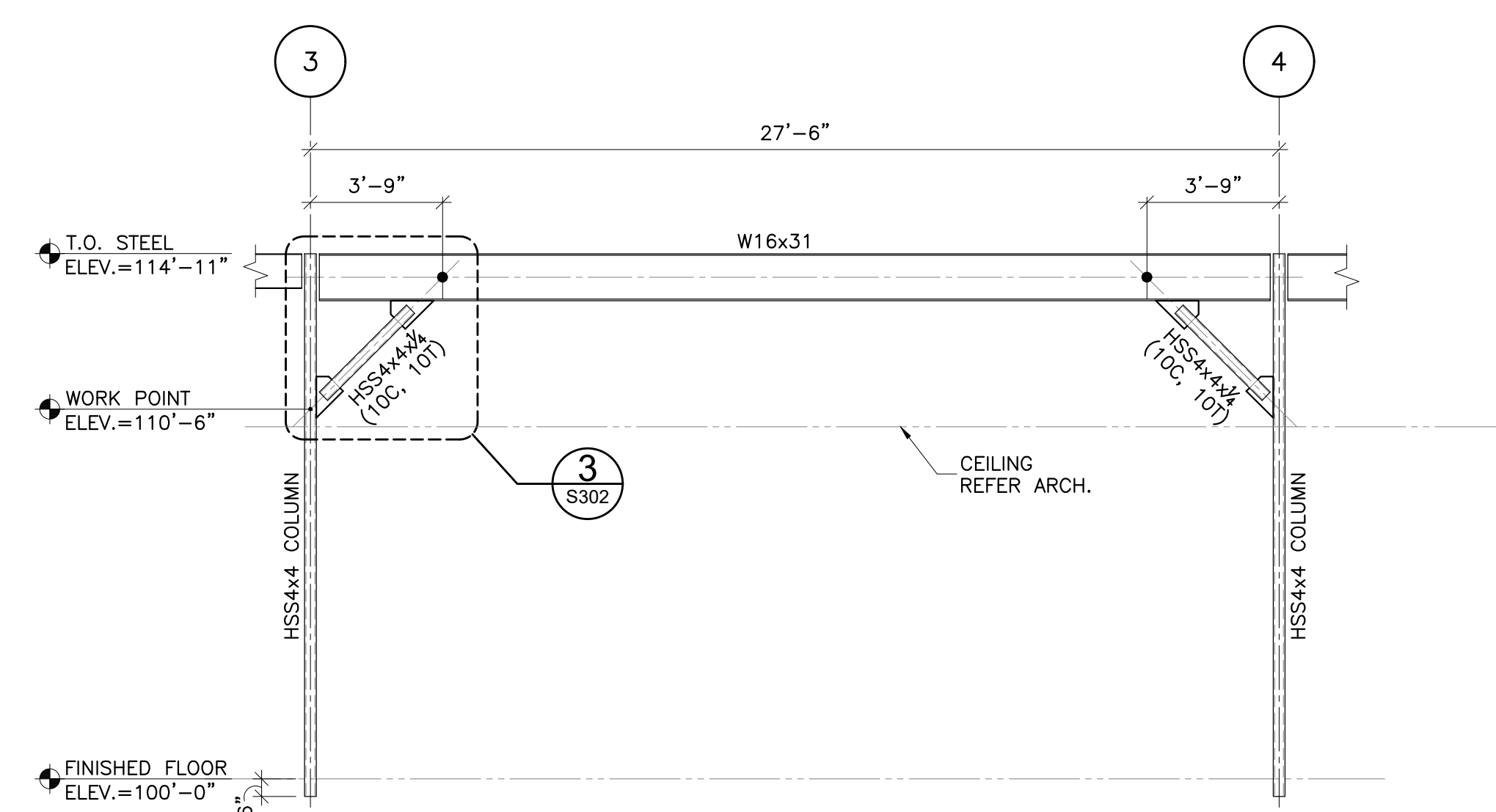
**ROOF FRAMING PLAN NOTES:**  
1. ALL ELEVATIONS ARE REFERENCED FROM FINISHED FLOOR DATUM OF 100'-0". REFER GENERAL NOTES FOR ACTUAL ELEVATION.  
2. ALL ROOF OPENINGS FOR MECHANICAL ROOF TOP UNITS ARE APPROXIMATELY LOCATED. EXACT SIZE AND LOCATIONS SHALL BE COORDINATED WITH THE SUCCESSFUL MECHANICAL CONTRACTOR. ALL ROOF/WALL OPENINGS SHALL BE SUPPORTED WITH TYPICAL ANGLE FRAME UNLESS NOTED OTHERWISE.

### FRAMING PLAN LEGEND:

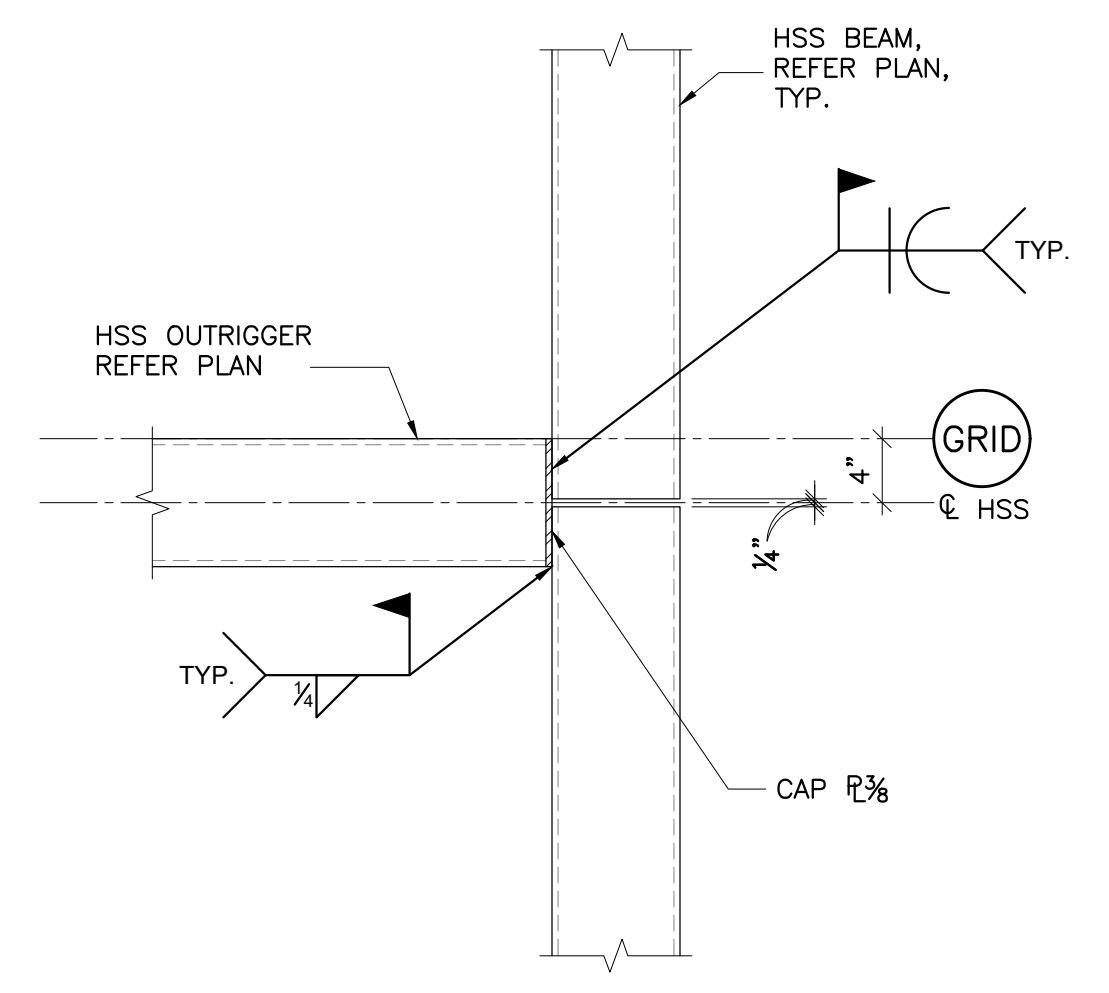


**3 DETAIL**  
S302 SCALE: 1/2"=1'-0"

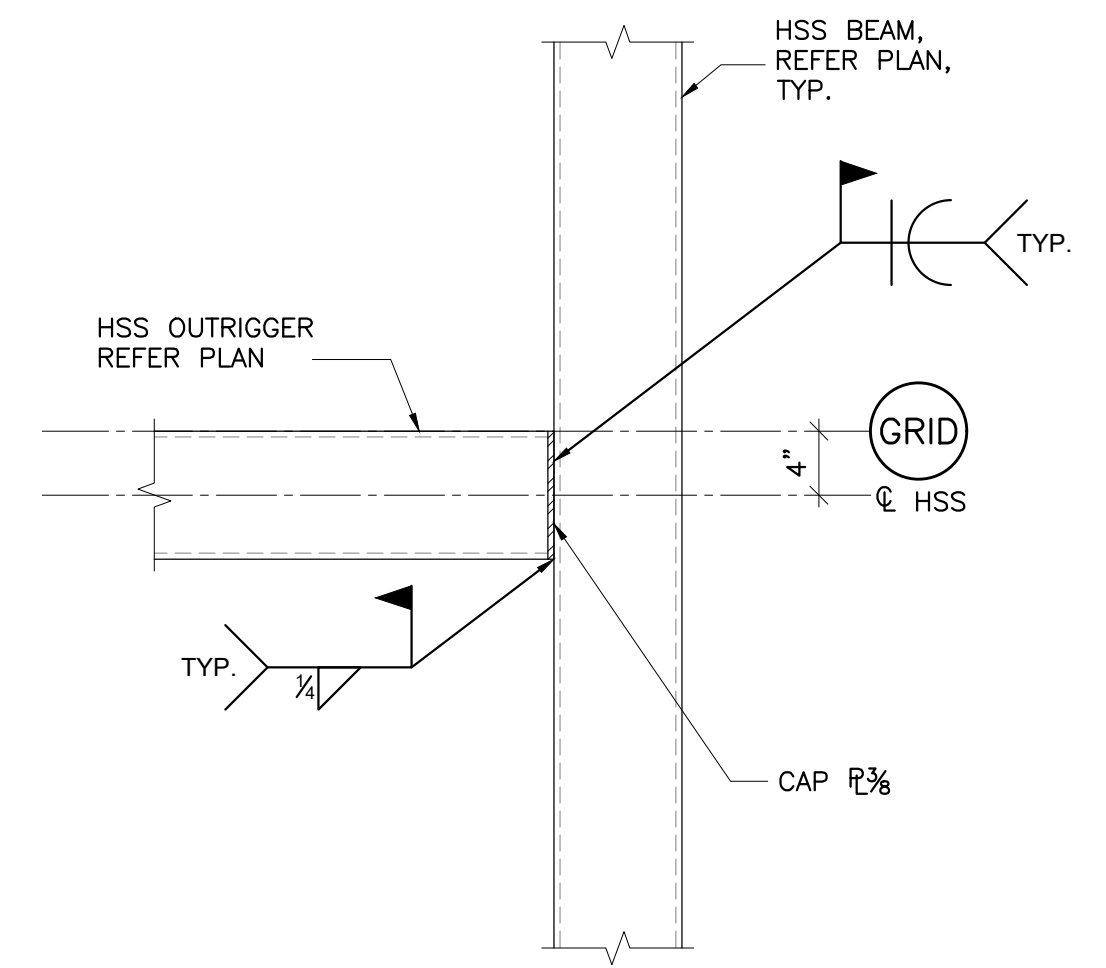
**NOTE:**  
\* WELD AND CONNECTION SIZED FOR AXIAL FORCES SHOWN.



**2 ELEVATION**  
S302 SCALE: 1/4"=1'-0"



**4 ENLARGED PLAN DETAIL**  
S302 SCALE: 1"=1'-0"



**5 ENLARGED PLAN DETAIL**  
S302 SCALE: 1"=1'-0"