

CC	drawn by
BB	checked by
AUGUST 2025	date
	revisions

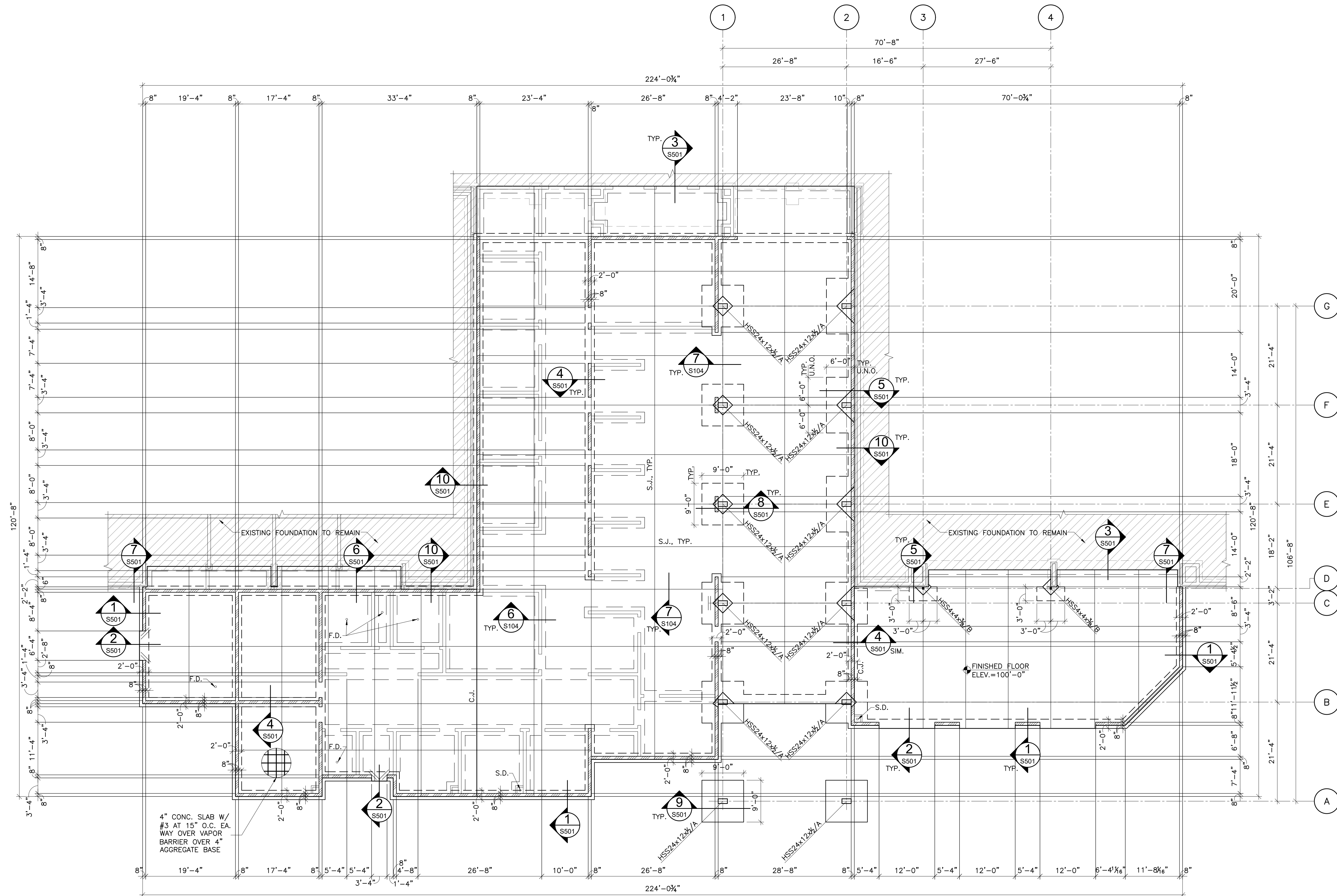


WESTMOORE HIGH  
SCHOOL ENTRY  
UPGRADES

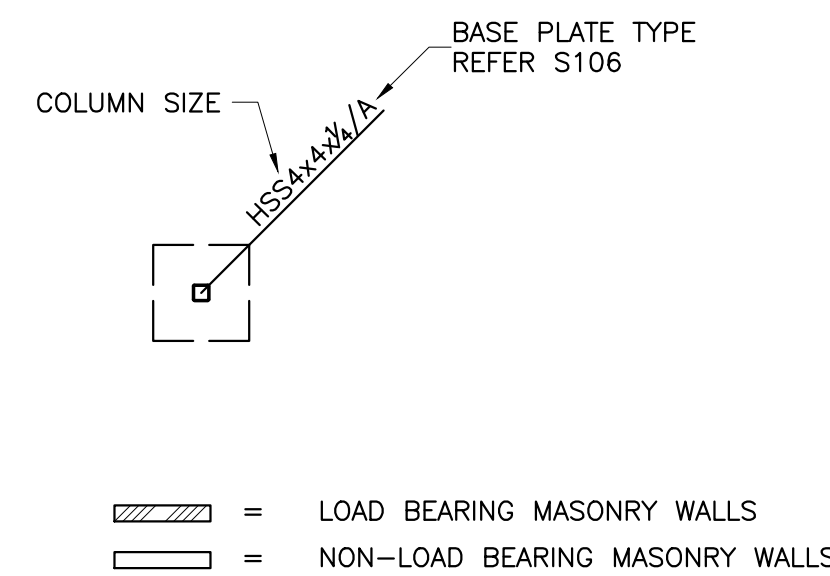
sheet no:

**S201**

OWNERSHIP USE OF DOCUMENTS:  
AGP EXPRESSLY RESERVES ITS  
COPYRIGHT AND OTHER PROPERTY  
RIGHTS OF ALL PLANS AND DRAWINGS  
DESIGNED AND/OR PRODUCED. PLANS  
AND DRAWINGS ARE NOT TO BE  
REPRODUCED IN ANY FORM OR MANNER  
WITHOUT THE EXPRESSED WRITTEN  
CONSENT OF AGP.



**FOUNDATION PLAN LEGEND:**



**FOUNDATION PLAN NOTES:**

- FOUNDATION AND SLAB SUBGRADE SHALL BE PREPARED AS OUTLINED IN THE STRUCTURAL GENERAL NOTES.
- REFERENCE ELEVATION OF 100'-0" EQUALS DATUM FINISHED FLOOR.
- EXCEPT WHERE SHOWN OTHERWISE, SLABS-ON-GRADE SHALL BE 4" THICK CONCRETE REINFORCED WITH #3 BARS AT 15" ON CENTER EACH WAY OVER A 15 MIL VAPOR RETARDER OVER A 4" AGGREGATE BASE COURSE. REINFORCING BARS SHALL BE PLACED 1/2" CLEAR FROM TOP OF SLAB USING CHAIRS OR SLAB BOLSTERS COMPLYING WITH CRSI'S "MANUAL OF STANDARD PRACTICE".
- SLABS-ON-GRADE SHALL BE WATER CURED FOR A MINIMUM OF 7 DAYS BY PONDING, SPRAYING, SPRINKLING OR BY USE OF SATURATED COVERINGS. THE USE OF CURING COMPOUNDS FOR SLABS-ON-GRADE IS PROHIBITED.
- // INDICATES (2)#4 BARSx4'-0" TO BE PLACED IN SLAB-ON-GRADE AT ALL RE-ENTRANT CORNERS. RE-ENTRANT CORNERS ARE DEFINED AS INTERIOR CORNERS WHERE JOINTS DO NOT OCCUR IN BOTH DIRECTIONS. SIMILAR BARS SHALL BE PLACED AT ANY DISCONTINUOUS ENDS OF SAWED JOINTS OR CONSTRUCTION JOINTS.
- REFER MECHANICAL FOR DRAIN (F.D., S.D.) INFORMATION.

**1 FOUNDATION PLAN**  
SCALE: 3/32"=1'-0"