

KEYED NOTES

⑦ PROVIDE PVC PIPE SLEEVE THRU CONCRETE FLOOR AND STUB UP 2" AFF FOR WATER LINE. INSTALL FOAM PIPE INSULATION ON WATER LINE IN SLEEVE AND SEAL SLEEVE OPENINGS WATERTIGHT. COORDINATE PIPE SLEEVE INSTALLATION WITH STRUCTURAL.

⑧ PROVIDE PIPE SLEEVE FOR EXISTING SANITARY PIPE BELOW OR THRU NEW GRADE BEAM AS REQUIRED. INSTALL FOAM SPACER BLOCKS TO MAINTAIN PIPE IN CENTER OF SLEEVE. COORDINATE PIPE SLEEVE INSTALLATION WITH STRUCTURAL.

KEYED NOTES

① PROVIDE CAST IRON PIPE SLEEVE FOR SANITARY PIPE BELOW OR THRU GRADE BEAM. INSTALL FOAM SPACER BLOCKS TO MAINTAIN PIPE IN CENTER OF SLEEVE. COORDINATE PIPE SLEEVE INSTALLATION WITH STRUCTURAL.

② INSTALL BELOW FLOOR 1/2" CW LINE TYPE K COPPER OR PEX-a FOR TRAP PRIMER TO FLOOR DRAIN. SLOPE LINE CONTINUOUSLY TOWARDS DRAIN. SEE DETAIL 1/P501.

③ PROVIDE CAST IRON PIPE SLEEVE FOR STORM PIPE BELOW OR THRU GRADE BEAM. INSTALL FOAM SPACER BLOCKS TO MAINTAIN PIPE IN CENTER OF SLEEVE. COORDINATE PIPE SLEEVE INSTALLATION WITH STRUCTURAL.

④ INSTALL 4" SANITARY BACKWATER VALVE AND 4" EXTERIOR CLEANOUTS. PROVIDE CONCRETE PAD AT GRADE. SEE DETAIL 4/P501.

⑤ EXISTING SANITARY FORCE MAIN PIPING TO REMAIN. CONTRACTOR TO FIELD VERIFY LOCATION AND PROTECT DURING CONSTRUCTION.

⑥ PROVIDE PVC PIPE SLEEVE FOR WATER LINE BELOW OR THRU FOUNDATION WALL. INSTALL FOAM PIPE INSULATION ON WATER LINE IN SLEEVE AND SEAL SLEEVE OPENINGS WATERTIGHT. COORDINATE PIPE SLEEVE INSTALLATION WITH STRUCTURAL.

GENERAL NOTES

- COORDINATE ALL BELOW GRADE PIPE ROUTING WITH STRUCTURAL FOUNDATIONS AND REQUIRED PIPE SLEEVES THRU FOUNDATION PENETRATIONS.
- COORDINATE WORK WITH ALL OTHER TRADES ON SITE.
- FIELD VERIFY EXISTING CONDITIONS PRIOR TO COMMENCING WORK.
- PRIOR TO COMMENCING WORK, COORDINATE WITH SITE CONTRACTOR FOR SANITARY SEWER AND WATER INVERT ELEVATIONS.
- REFER TO PLUMBING FIXTURE SCHEDULE ON SHEET P601 FOR FIXTURE ROUGH-IN PIPE SIZES AND ISOMETRIC SHEET P301 FOR ADDITIONAL PIPE SIZES.
- PIPE TRENCHES SHALL HAVE SAND BEDDING TO A MINIMUM POINT 6" ABOVE THE TOP OF PIPE. REFER TO SPECIFICATIONS.
- INSTALL BELOW FLOOR 1/2" CW LINE TYPE K COPPER OR PEX-a FOR TRAP PRIMER TO FLOOR DRAINS. SLOPE LINE CONTINUOUSLY TOWARDS DRAIN. SEE DETAIL 1/P501.
- INSTALL CAUTION TAPE AND TRACER WIRE ABOVE ALL NON-METALLIC GAS PIPING.



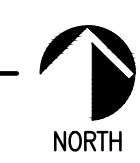
KS	drawn by
KP	checked by
AUGUST 2025	date
	revisions



WESTMOORE HIGH
SCHOOL ENTRY
UPGRADES

sheet no:
P101

1 PLUMBING PLAN - BELOW GRADE
SCALE: 3/32" = 1'-0"

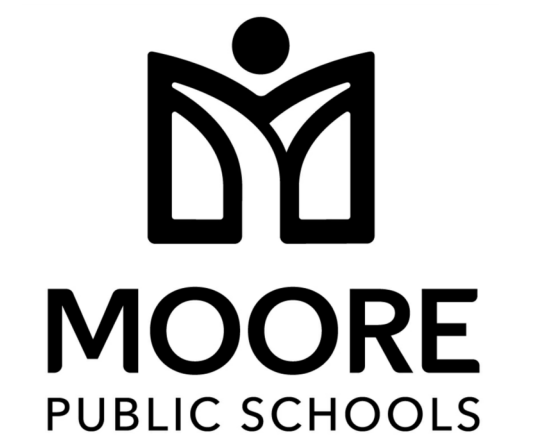


Salas O'Brien
Salas O'Brien, Inc. - Oklahoma City
2900 S. Telephone Road, Suite 120
Moore, OK 73160
CA# 9820 Expiration Date: 6/30/2027
Salas O'Brien Project Number: 2550-01165-00

OWNERSHIP USE OF DOCUMENTS:
AGP EXPRESSLY RESERVES ITS
COPYRIGHT AND OTHER PROPERTY
RIGHTS OF ALL PLANS AND DRAWINGS
DESIGNED AND/OR PRODUCED. PLANS
AND DRAWINGS ARE NOT TO BE
REPRODUCED IN ANY FORM OR MANNER
WITHOUT THE EXPRESSED WRITTEN
CONSENT OF AGP.



KS	drawn by
KP	checked by
AUGUST 2025	date
	revisions



WESTMOORE HIGH SCHOOL ENTRY UPGRADES

sheet no:

P201

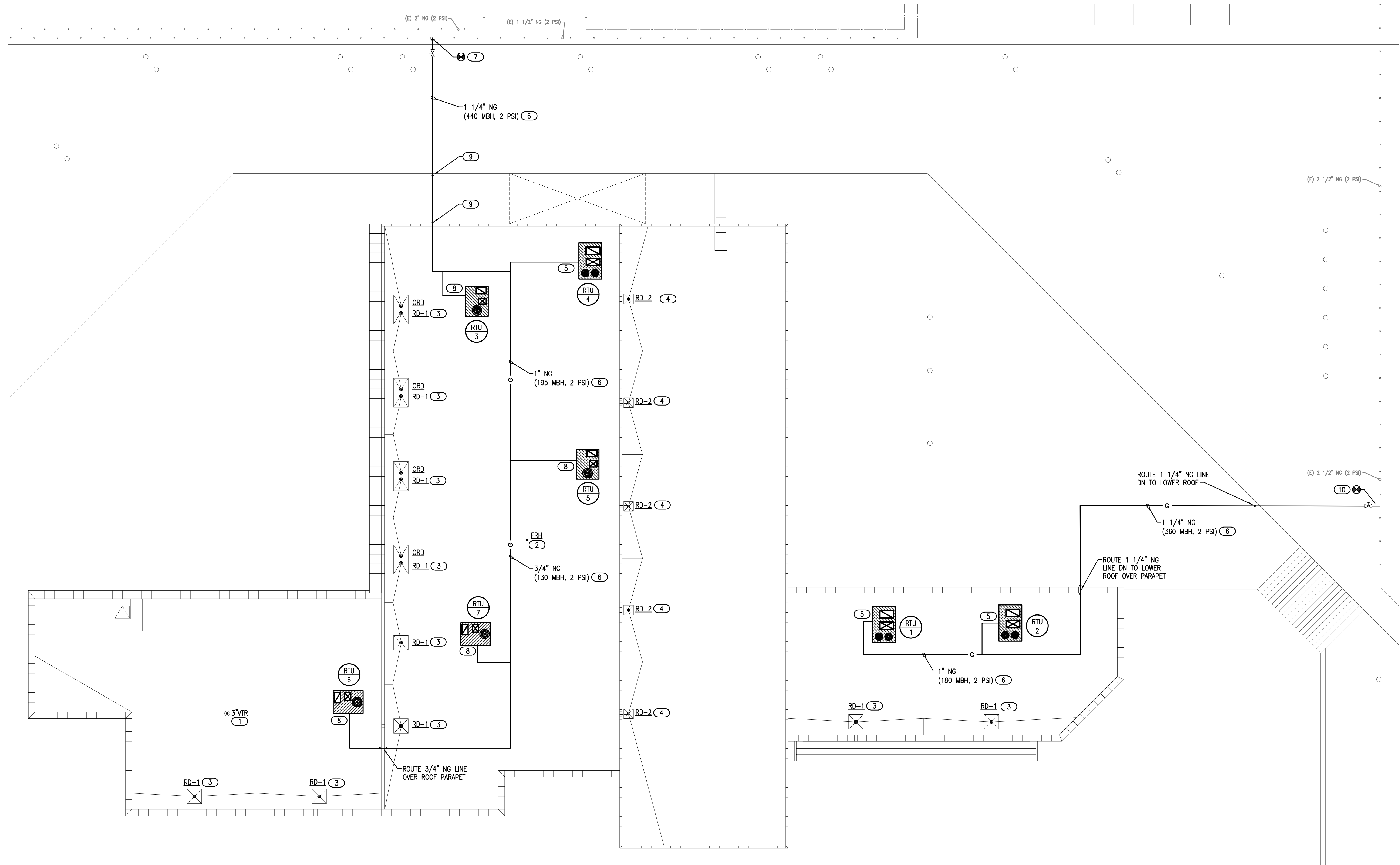
OWNERSHIP USE OF DOCUMENTS:
AGP EXPRESSLY RESERVES ITS COPYRIGHT AND OTHER PROPERTY RIGHTS OF ALL PLANS AND DRAWINGS DESIGNED AND/OR PRODUCED. PLANS AND DRAWINGS ARE NOT TO BE REPRODUCED IN ANY FORM OR MANNER WITHOUT THE EXPRESSED WRITTEN CONSENT OF AGP.

- ### GENERAL NOTES
- COORDINATE WITH WITH ALL OTHER TRADES ON SITE.
 - FIELD VERIFY EXISTING CONDITIONS PRIOR TO COMMENCING WORK.
 - MAINTAIN A MINIMUM OF 10'-0" CLEAR BETWEEN EXHAUST AND INTAKE VENTS WITH MECHANICAL EQUIPMENT AND OTHER ROOF OPENINGS.
 - ALL ABOVE GRADE EXTERIOR NATURAL GAS PIPE SHALL BE CLEANED AND DECREASED PRIOR TO BEING PRIMED THEN PAINTED YELLOW WITH WEATHER RESISTANT ZINC RICH PAINT.
 - PIPE IDENTIFICATION SHALL BE THE WORD "NATURAL GAS" IN BLACK LETTERS AT 5 FT INTERVALS USING PLASTIC PIPE MARKERS OR STENCILED PAINTED LETTERS.
 - ALL GAS PIPE SHALL COMPLY WITH IFGC. BRANCH LINES SHALL TAP OFF TOP OF GAS MAINS AND INSTALL SHUT-OFF VALVE ON BRANCH LINE.

- ### KEYED NOTES
- COORDINATE INSTALLATION OF PLUMBING VENTS WITH ROOFING CONTRACTOR. INSTALL VENT A MINIMUM 10'-0" FROM ANY OPENINGS, EQUIPMENT, INTAKES OR EXHAUST VENTS.
 - COORDINATE INSTALLATION OF FREEZELESS ROOF HYDRANT (FRH) WITH STRUCTURAL AND ROOFING CONTRACTOR.
 - COORDINATE WITH ROOFING CONTRACTOR AND STRUCTURAL FOR INSTALLATION OF ROOF DRAINS.
 - COORDINATE WITH ROOFING CONTRACTOR AND STRUCTURAL FOR INSTALLATION OF ROOF DRAINS. ROUTE CAST IRON 4" STORM DRAIN DOWN ALONG VERTICAL WALL WITH 90 DEGREE ELBOW TO DISCHARGE ONTO LOWER ROOF. PROVIDE BLOCKING TO SUPPORT ELBOW. PROVIDE VERTICAL SUPPORTS.
 - INSTALL 1" NATURAL GAS (180 MBH, 2 PSI) LINE TO ROOFTOP UNIT. PROVIDE SHUTOFF VALVE, DRIP LEG, PRESSURE REGULATOR AND FINAL UNIT CONNECTION. ROUGH-IN AND COORDINATE FINAL CONNECTION WITH MC. SEE DETAIL 8/P501.

- ### KEYED NOTES
- ROUTE NATURAL GAS LINE (2 PSI) ON ROOF. PROVIDE MIRO INDUSTRIES MODEL 3-RAH-8 ROOF TOP SUPPORTS OR APPROVED EQUAL. INSTALL AT MAXIMUM OF 10'-0" APART (CENTER TO CENTER) ON ALL 1 1/4" NATURAL GAS PIPING OR LARGER. INSTALL AT 8'-0" APART ON 1" OR 3/4" NATURAL GAS PIPING. REFER TO GENERAL NOTES FOR PAINTING GAS LINE. SEE PIPE SUPPORT DETAIL 11/P501.
 - FIELD VERIFY LOCATION OF EXISTING NATURAL GAS MAIN AND CONNECT NEW 1 1/4" NATURAL GAS (440 MBH, 2 PSI) LINE WITH SHUT-OFF VALVE AND UNION TO EXISTING UTILIZING LIKE MATERIALS. CONTRACTOR TO COORDINATE LOCATION OF EXISTING WINDOWS IN THIS AREA AND TO ROUTE PIPING TO AVOID ANY CONFLICT WITH WINDOWS.
 - INSTALL 3/4" NATURAL GAS (65 MBH, 2 PSI) LINE TO ROOFTOP UNIT. PROVIDE SHUTOFF VALVE, DRIP LEG, PRESSURE REGULATOR AND FINAL UNIT CONNECTION. ROUGH-IN AND COORDINATE FINAL CONNECTION WITH MC. SEE DETAIL 8/P501.

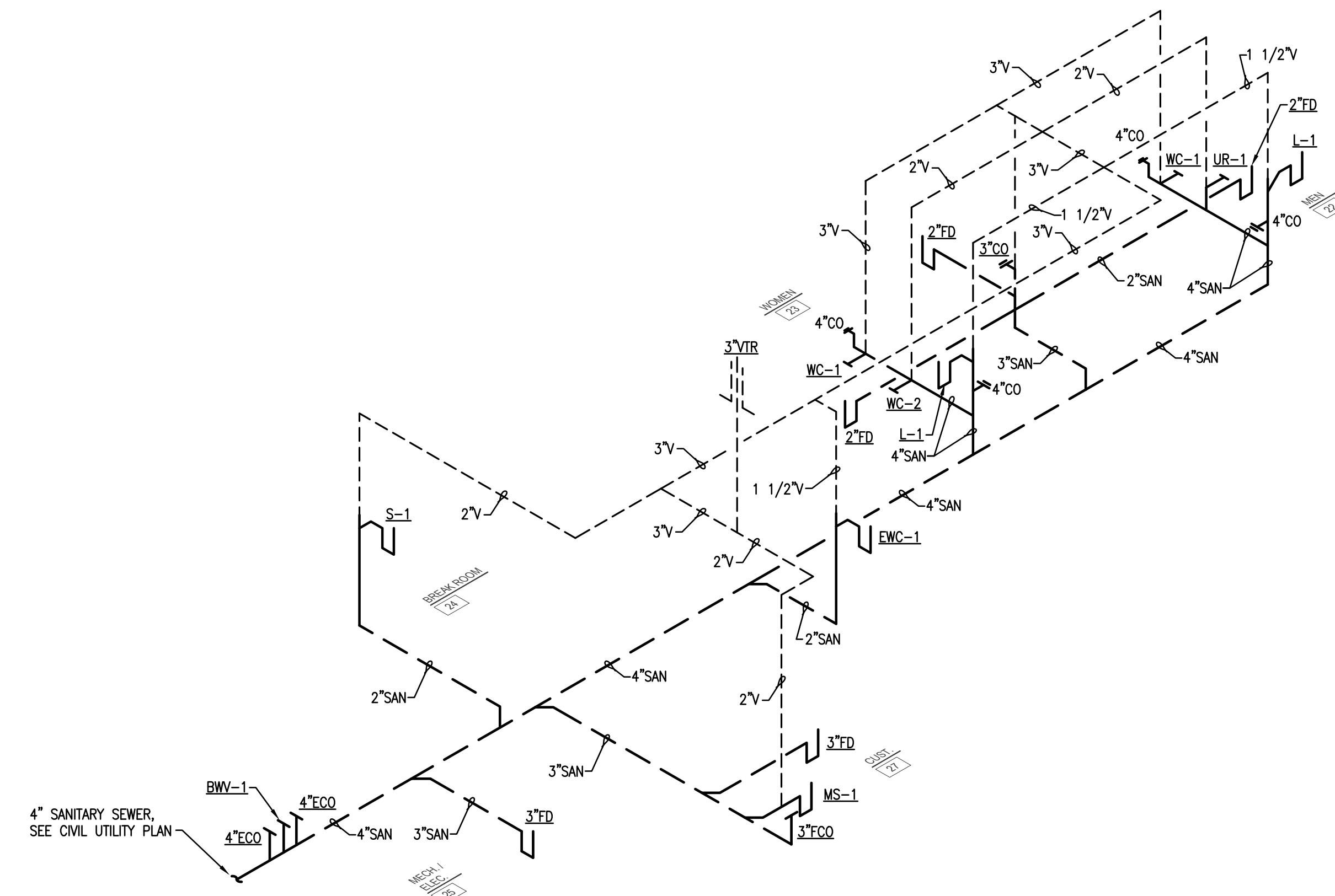
- ### KEYED NOTES
- ROUTE 1 1/4" NATURAL GAS DOWN TO LOWER ROOF AND BACK UP TO NEW ADMIN ADDITION ROOF. COORDINATE WITH ROOFING CONTRACTOR AND STRUCTURAL. PROVIDE PIPE SUPPORTS AS REQUIRED.
 - FIELD VERIFY LOCATION OF EXISTING NATURAL GAS MAIN AND CONNECT NEW 1 1/4" NATURAL GAS (360 MBH, 2 PSI) LINE WITH SHUT-OFF VALVE AND UNION TO EXISTING UTILIZING LIKE MATERIALS. COORDINATE WITH GC.



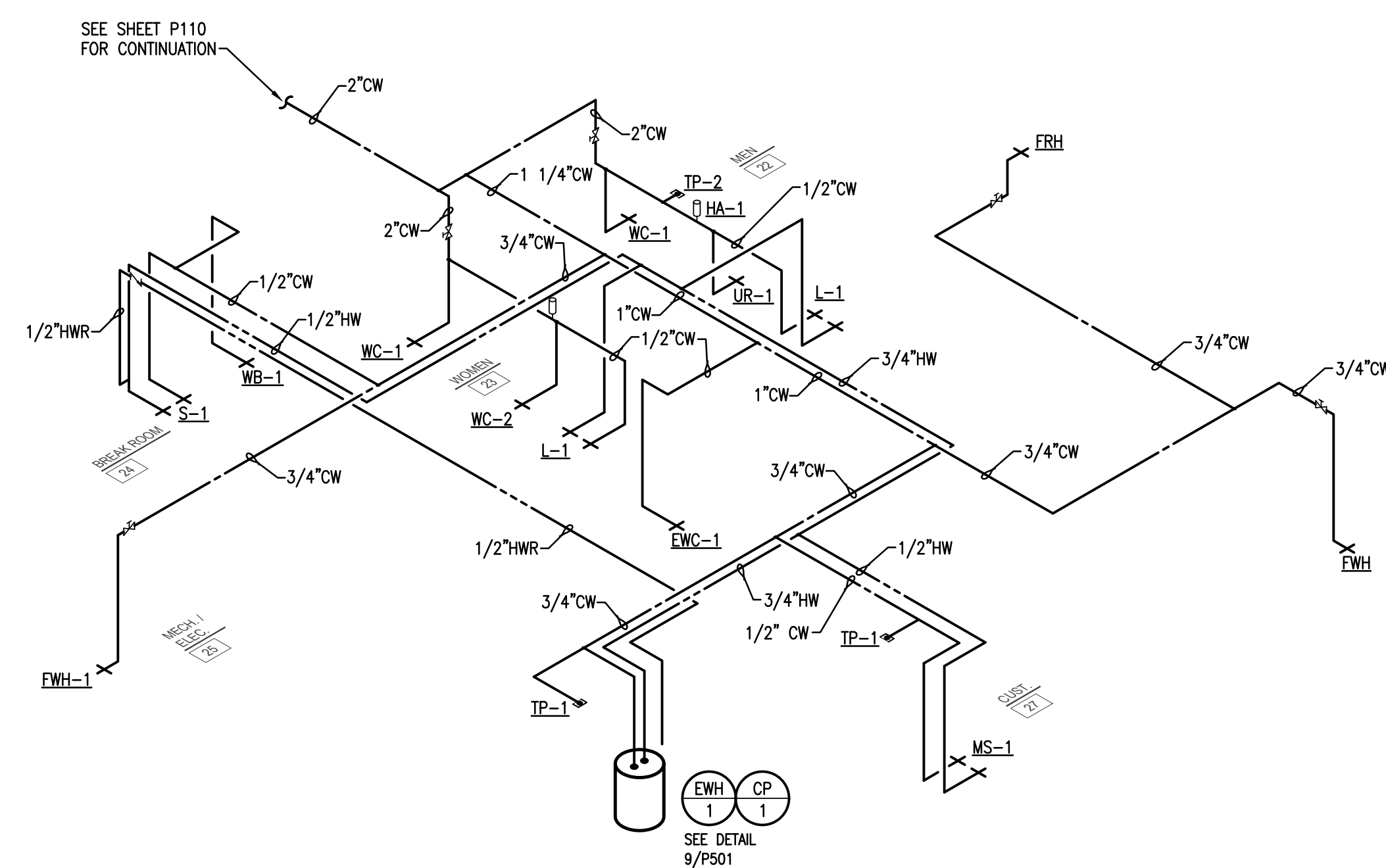
CEDAR CREEK
CIVIL

KFC ENGINEERING
STRUCTURAL

SALAS O'BRIEN
MECHANICAL / ELECTRICAL



1 PLUMBING ISOMETRIC - WASTE & VENT
NO SCALE



2 PLUMBING ISOMETRIC - WATER SUPPLY
NO SCALE

KS
drawn by
KP
checked by
AUGUST 2025
date

revisions



WESTMOORE HIGH
SCHOOL ENTRY
UPGRADES

sheet no:

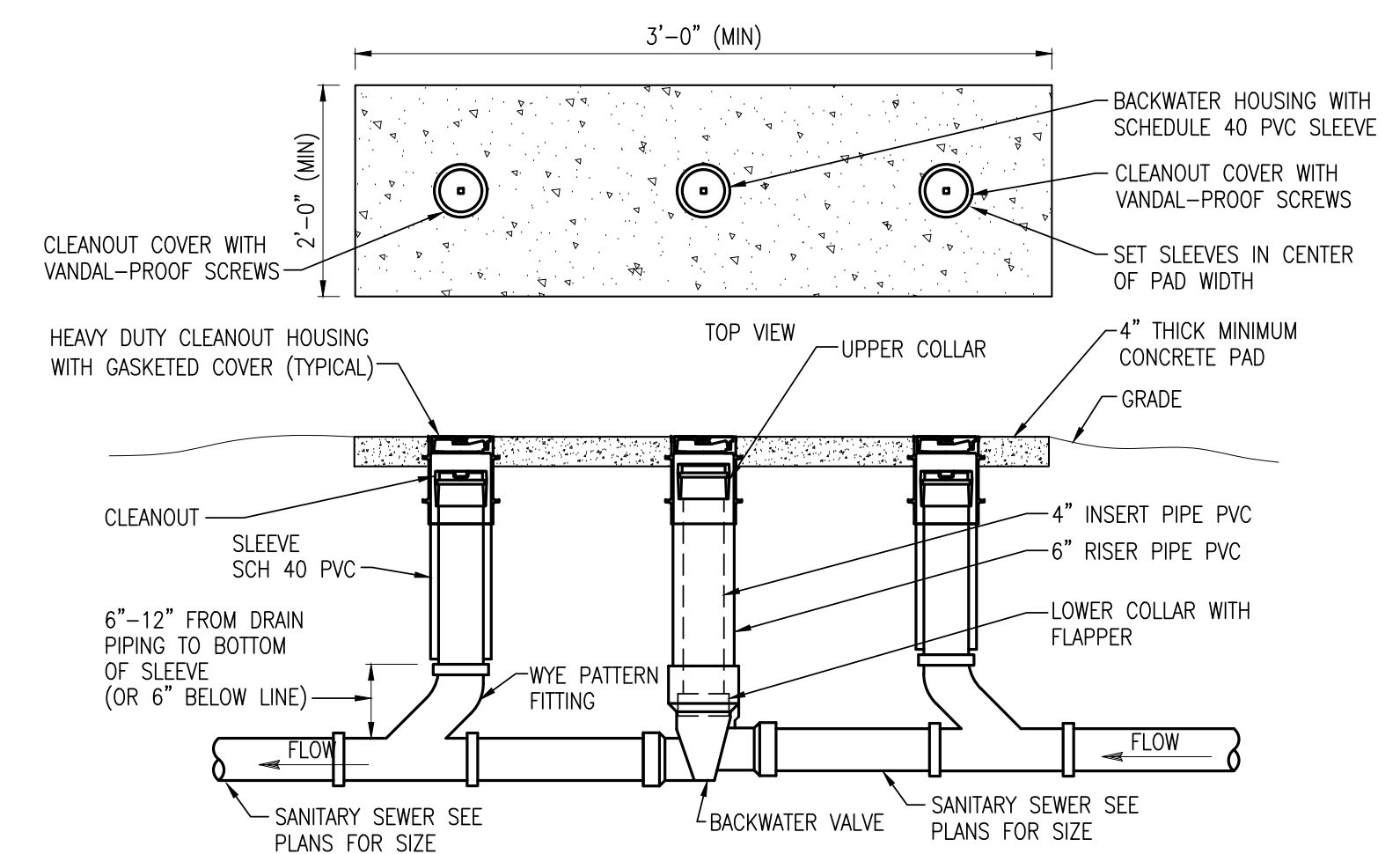
P301

Salas O'Brien
Salas O'Brien, Inc. - Oklahoma City
2900 S. Telephone Road, Suite 120
Moore, OK 73160
CA# 9820 Expiration Date: 6/30/2027
Salas O'Brien Project Number: 2550-01165-00

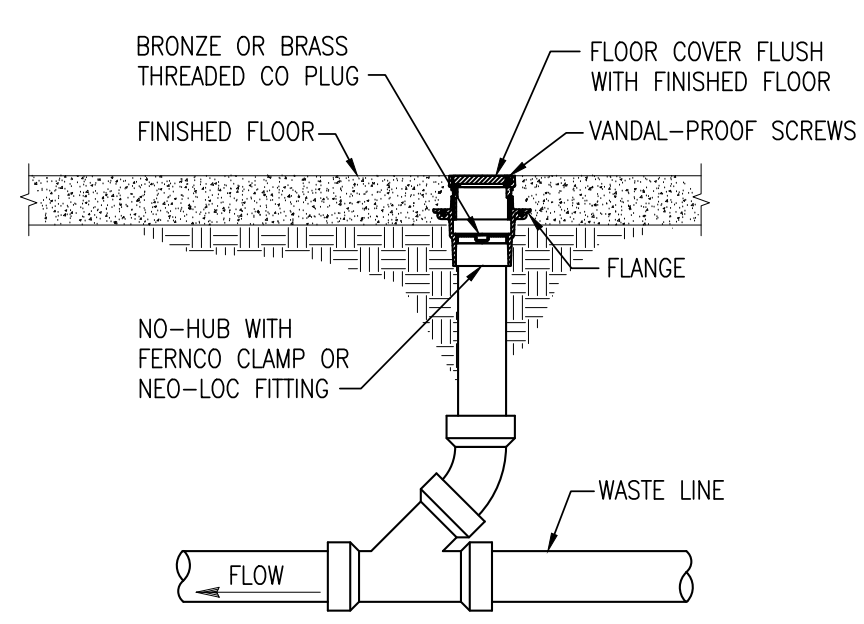
OWNERSHIP USE OF DOCUMENTS:
AGP EXPRESSLY RESERVES ITS
COPYRIGHT AND OTHER PROPERTY
RIGHTS OF ALL PLANS AND DRAWINGS
DESIGNED AND/OR PRODUCED. PLANS
AND DRAWINGS ARE NOT TO BE
REPRODUCED IN ANY FORM OR MANNER
WITHOUT THE EXPRESSED WRITTEN
CONSENT OF AGP.



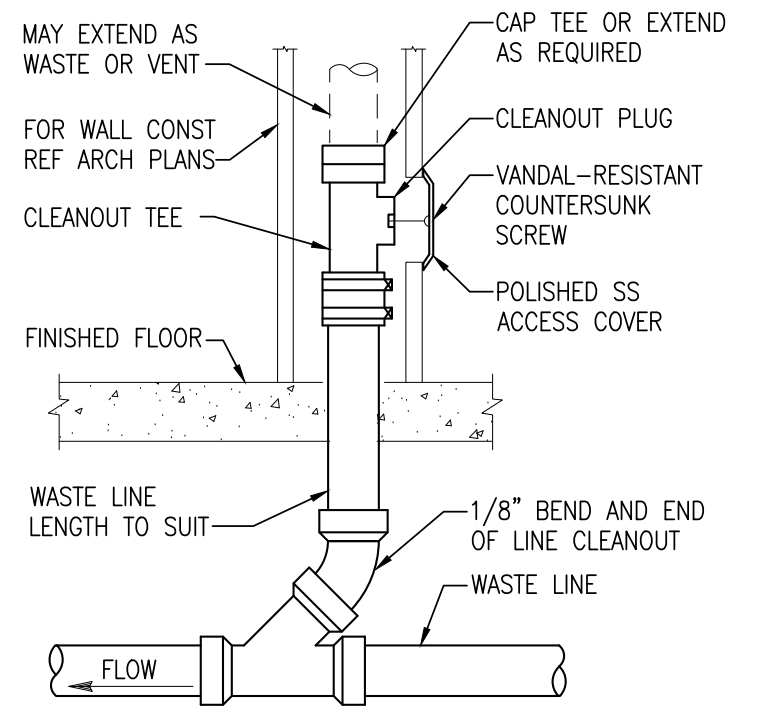
KS	drawn by
KP	checked by
AUGUST 2025	date
	revisions



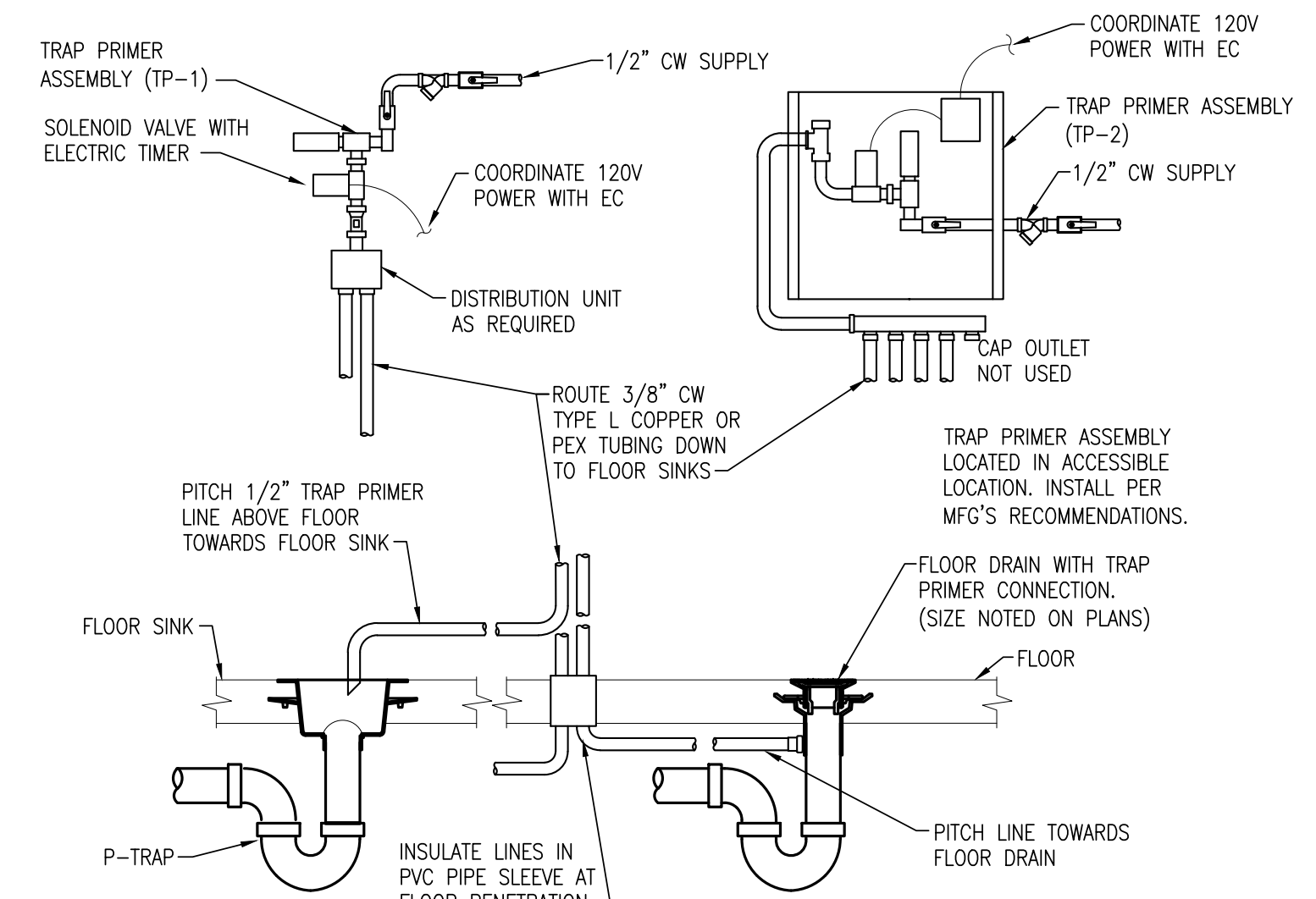
4 BACKWATER VALVE & EXTERIOR CLEANOUT DETAIL
NOT TO SCALE



3 INTERIOR CLEANOUT DETAIL
NOT TO SCALE

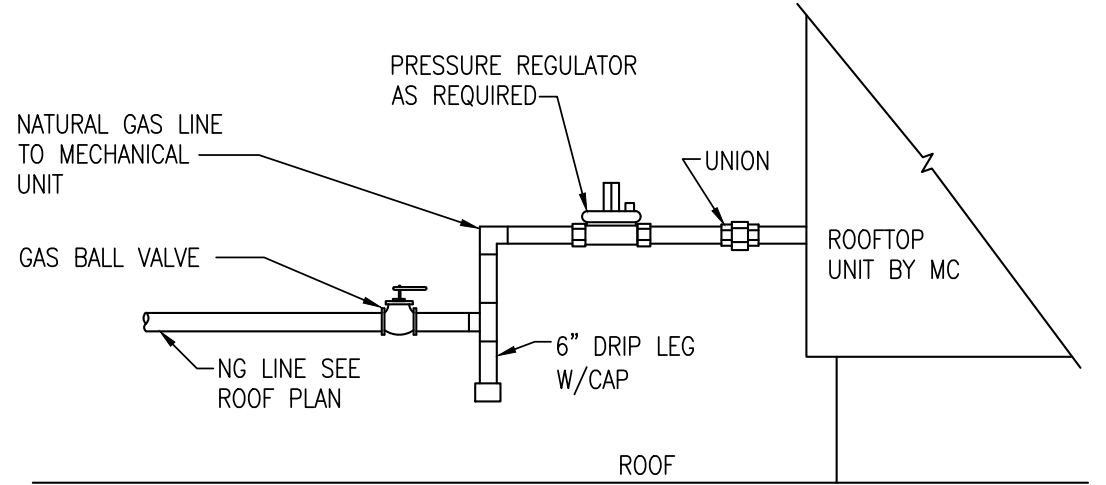


2 WALL CLEANOUT DETAIL
NOT TO SCALE

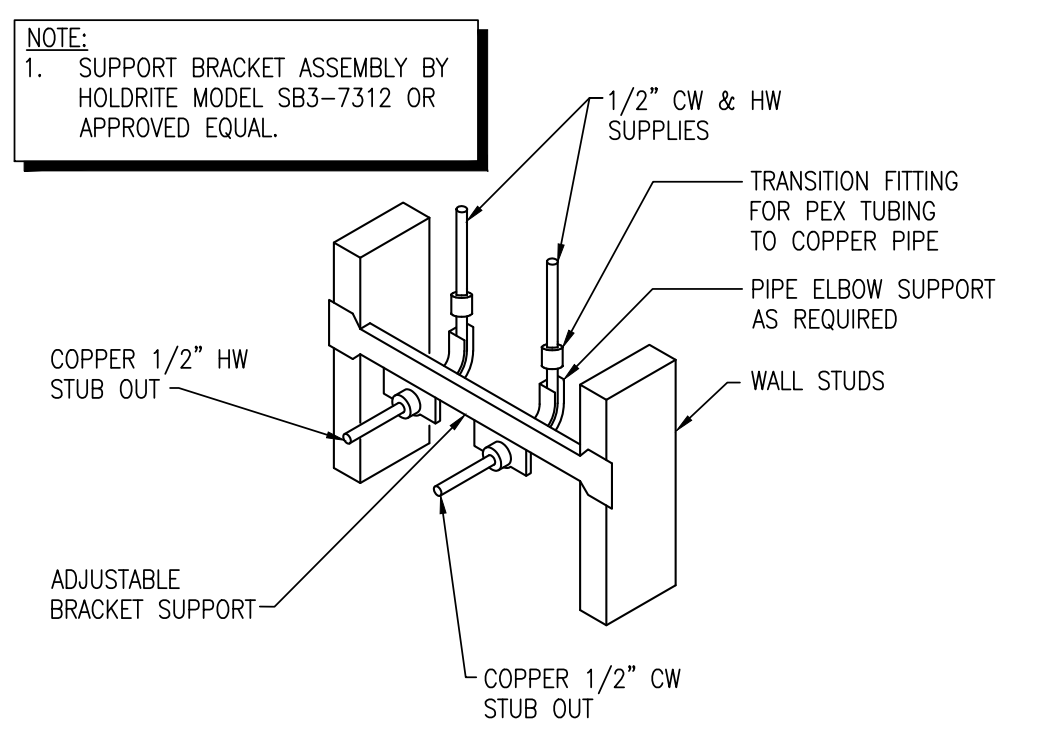


1 ELECTRIC TRAP PRIMER DETAIL
NOT TO SCALE

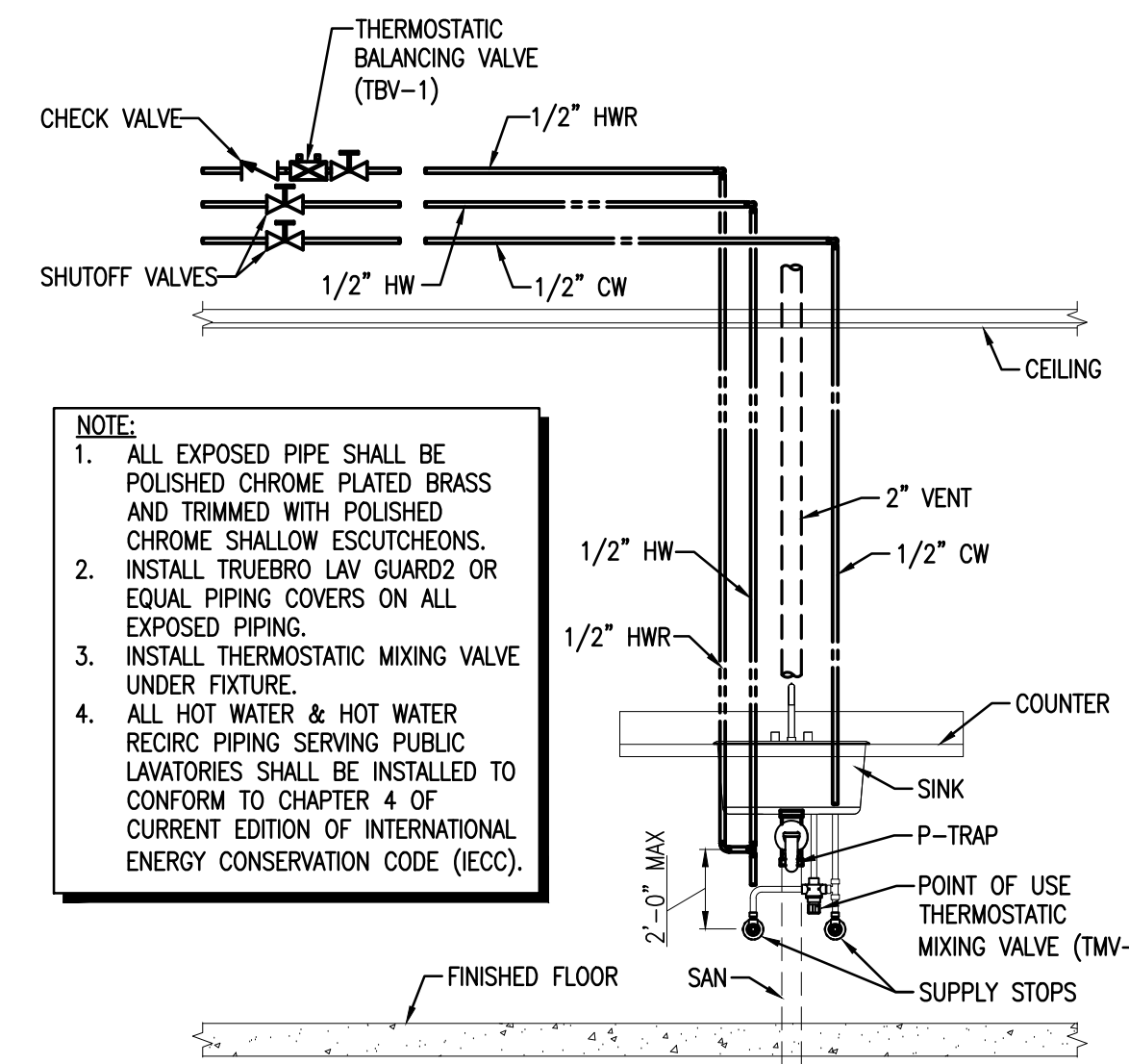
- NOTES:**
1. PROVIDE GAS REGULATOR VENT PROTECTOR. INSTALL REGULATOR PER MANUFACTURER'S RECOMMENDATIONS.
 2. COORDINATE DISTANCE BETWEEN PRESSURE REGULATOR AND GAS-FIRED EQUIPMENT WITH EQUIPMENT MANUFACTURER. COORDINATE FINAL CONNECTION TO UNIT WITH MC.
 3. PROVIDE ROOF PIPE SUPPORTS FOR NATURAL GAS PIPING.
 4. PIPING ABOVE GRADE SHALL BE SCHEDULE 40 BLACK IRON. REFER TO SPECIFICATIONS FOR PAINTING PIPING YELLOW.



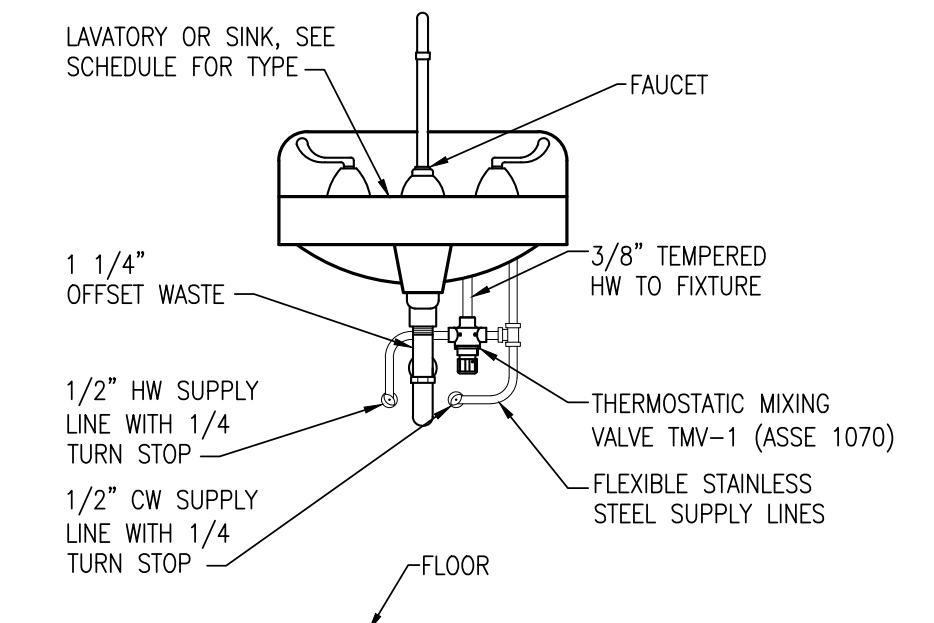
8 RTU GAS CONNECTION DETAIL
NOT TO SCALE



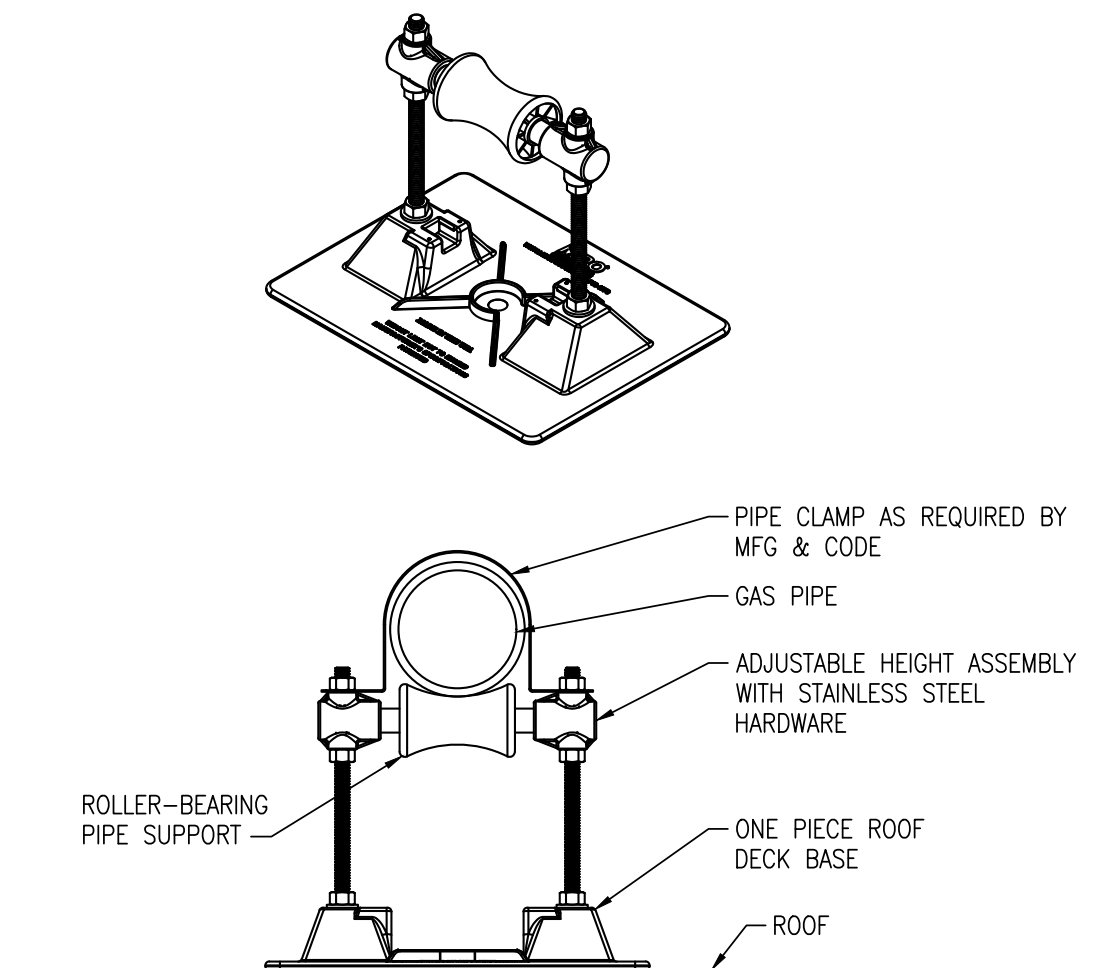
7 WATER SUPPLY STUB OUT DETAIL
NOT TO SCALE



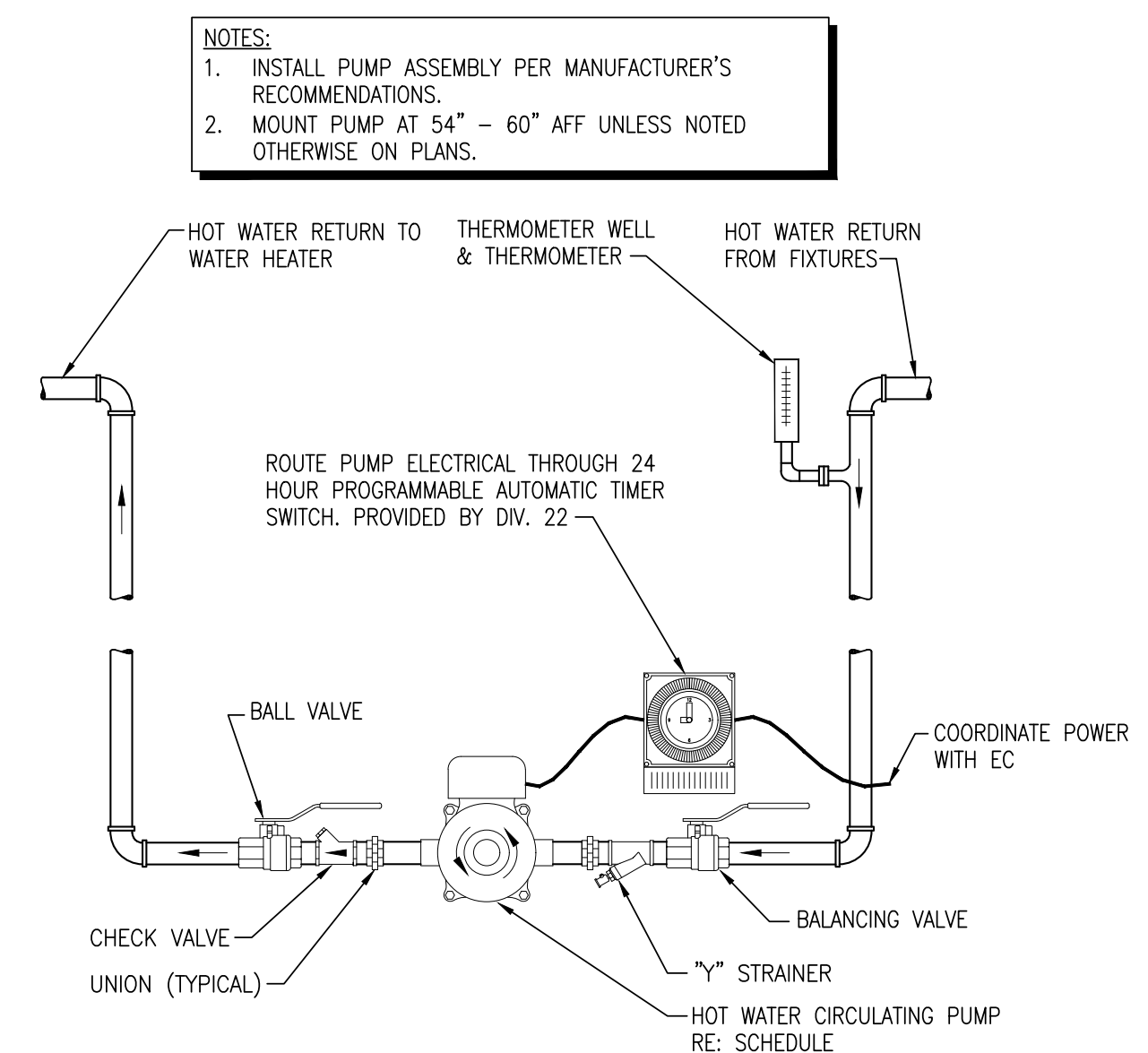
6 SINK WITH HW RECIRCULATION DETAIL
NOT TO SCALE



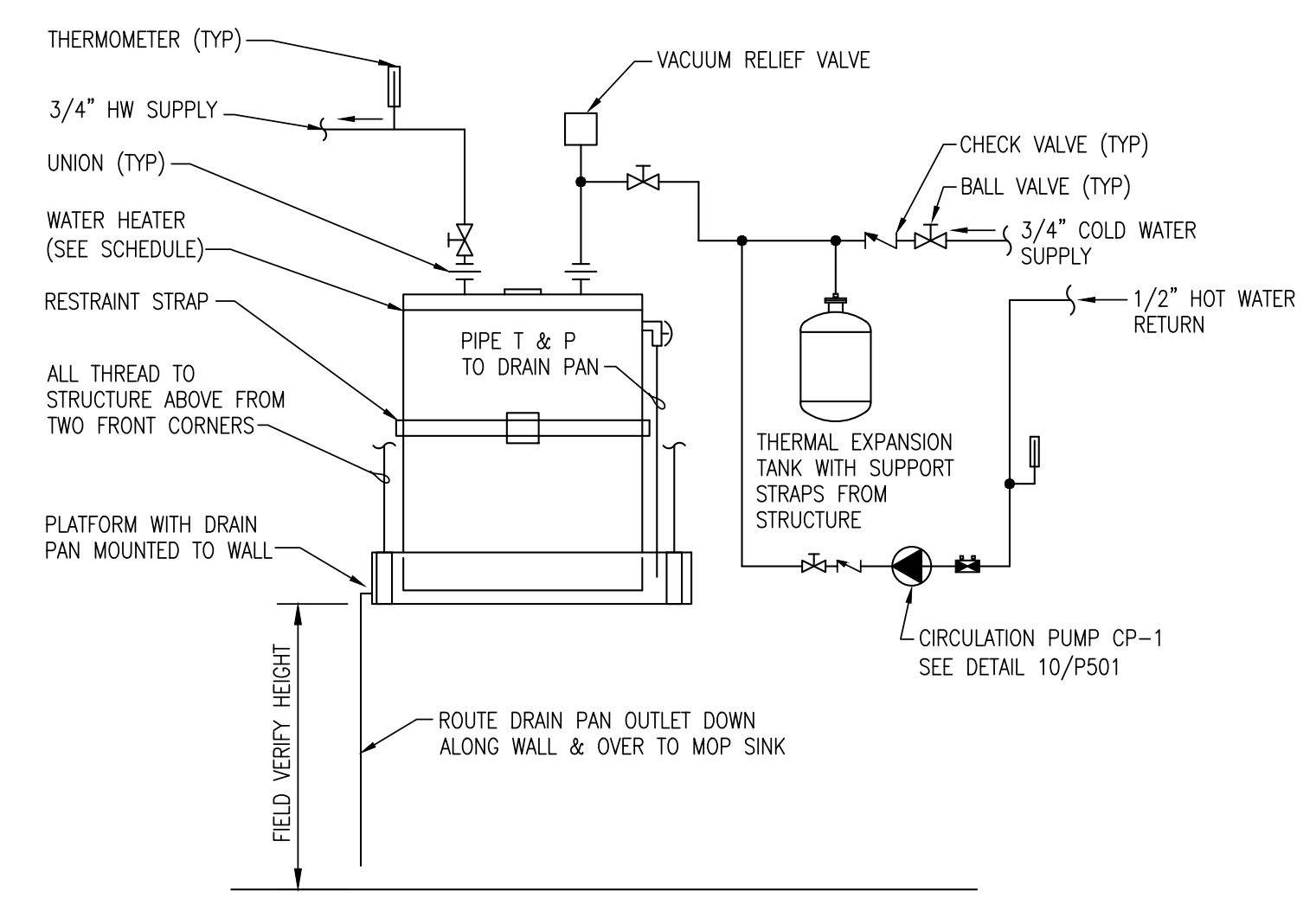
5 LAVATORY OR SINK W/ MIXING VALVE DETAIL
NOT TO SCALE



11 ROOF PIPE SUPPORT DETAIL
NOT TO SCALE



10 HW RECIRCULATION PUMP DETAIL
NOT TO SCALE



9 WALL MOUNTED WATER HEATER DETAIL
NOT TO SCALE

Salas O'Brien
Salas O'Brien, Inc. - Oklahoma City
2900 S. Telephone Road, Suite 120
Moore, OK 73160
CA# 9820 Expiration Date: 6/30/2027
Salas O'Brien Project Number: 2550-01165-00



WESTMOORE HIGH SCHOOL ENTRY UPGRADES

sheet no:

P501

OWNERSHIP USE OF DOCUMENTS:
AGP EXPRESSLY RESERVES ITS COPYRIGHT AND OTHER PROPERTY RIGHTS OF ALL PLANS AND DRAWINGS DESIGNED AND/OR PRODUCED. PLANS AND DRAWINGS ARE NOT TO BE REPRODUCED IN ANY FORM OR MANNER WITHOUT THE EXPRESSED WRITTEN CONSENT OF AGP.

PLUMBING FIXTURE SCHEDULE									
MARK	FIXTURE	MANUFACTURER	MODEL	MOUNT	ROUGH-IN SCHEDULE				FITTINGS AND REMARKS
					COLD	HOT	WASTE	VENT	
L-1	LAVATORY ADA	AMERICAN STANDARD	0356.041	WALL	1/2"	1/2"	1 1/2"	1 1/2"	COLOR WHITE. PROVIDE DELTA SELF METERING FAUCET 87T105, MCGUIRE HD155A GRID STRAINER, 8902C P-TRAP, LFBV2165CC 1/4 TURN SUPPLY STOPS. TRUEBRO LAV GUARD2 PIPE COVERS. WADE WALL FIXTURE CARRIER. REFER TO ARCHITECT'S PLANS FOR HEIGHT AND WALL TYPE. INSTALL THERMOSTATIC MIXING VALVE TMV-1 UNDER FIXTURE. SEE DETAIL 5/P501.
WC-1	WATER CLOSET ADA	AMERICAN STANDARD	2257.101	WALL	1 1/4"	-	4"	-	COLOR WHITE. PROVIDE SLOAN ROYAL 111-1.6 SFSM BATTERY OPERATED FLUSH VALVE. PROVIDE BEMIS 1655SCT OPEN FRONT ELONGATED SEAT, EXTERNAL CHECK HINGE, COLOR WHITE. WADE WALL CARRIER. REFER TO ARCHITECT'S PLANS FOR HEIGHT AND WALL TYPE. ADA INSTALLATION.
WC-2	WATER CLOSET	AMERICAN STANDARD	2257.101	WALL	1 1/4"	-	4"	-	COLOR WHITE. PROVIDE SLOAN ROYAL 111-1.6 SFSM BATTERY OPERATED FLUSH VALVE. PROVIDE BEMIS 1655SCT OPEN FRONT ELONGATED SEAT, EXTERNAL CHECK HINGE, COLOR WHITE. WADE WALL CARRIER. REFER TO ARCHITECT'S PLANS FOR HEIGHT AND WALL TYPE.
UR-1	URINAL ADA	AMERICAN STANDARD	6590.001	WALL	1"	-	2"	1 1/2"	COLOR WHITE. PROVIDE SLOAN ROYAL 186-0.5 SFSM BATTERY OPERATED FLUSH VALVE. WADE WALL SUPPORT CARRIER. REFER TO ARCHITECT'S PLANS FOR MOUNTING HEIGHT AND WALL TYPE. ADA INSTALLATION.
MS-1	MOP SINK	FIAT	TSB-3010 24x24x12	FLOOR	1/2"	1/2"	3"	1 1/2"	PROVIDE 832AA HOSE & BRACKET, 889-CC MOP BRACKET, MSG 2424 SS WALL GUARDS. PROVIDE 1&S BRASS FAUCET B-0665-BSTR, ASSE 1011 APPROVED HOSE CONNECTION VACUUM BREAKER, WATTS LFBA OR APPROVED EQUAL.
S-1	SINK	ELKAY	LRAD1919602	COUNTERTOP	1/2"	1/2"	1 1/2"	1 1/2"	SINGLE BOWL 6" DEEP, 2 FAUCET HOLES, REAR CENTER DRAIN. PROVIDE ELKAY LKD35 DRAIN & ELKAY LK406GN08T4 FAUCET, MCGUIRE 8912 P-TRAP & LFBV2165 SUPPLY STOPS. INSTALL MIXING VALVE TMV-1 UNDER SINK.
EW-1	ELECTRIC WATER COOLER DUAL	ELKAY	LZSTL8WSSK	WALL	1/2"	-	1 1/2"	1 1/2"	DUAL LEVEL WITH PUSH BUTTON ACTIVATION, SENSOR WATER BOTTLE FILLING STATION ON LOWER UNIT, FILTERED, 120 VOLT. PROVIDE ELKAY CANE APRON LKAPREZL ON UPPER UNIT. PROVIDE PVC P-TRAP AND 1/4 TURN SUPPLY STOP. REFER TO ARCHITECT'S PLANS FOR MOUNTING HEIGHT & WALL TYPE. ADA INSTALLATION.
FD	FLOOR DRAIN	WADE	1100-DA6-1 VP	FLOOR	-	-	SEE PLANS	-	6" ROUND NICKEL BRONZE STRAINER, CAST IRON BODY ANCHOR FLANGE, CLAMP COLLAR, ADJUSTABLE COLLAR, ADJUSTABLE STRAINER HEIGHT, VANDAL-PROOF SECURED TOP, 1/2" TRAP PRIMER CONNECTION.
FCO	FLOOR CLEANOUT	WADE	6000-1-VP	FLOOR	-	-	SEE PLANS	-	6" ROUND NICKEL BRONZE TOP, CAST IRON BODY, ADJUSTABLE COLLAR, ANCHOR FLANGE, COVER HEIGHT ADJUSTMENT AFTER FLOOR IS POURED, COVER WITH VANDAL RESISTANT SCREWS. SEE DETAIL 3/P501.
WCO	WALL CLEANOUT	WADE	8560-75 8304-VP	WALL	-	-	SEE PLANS	-	CAST IRON CLEANOUT TEE, THREADED BRASS PLUG, PROVIDE 8304-VP STAINLESS STEEL 6" ROUND ACCESS COVER WITH VANDAL RESISTANT SECURING SCREW. SEE DETAIL 2/P501.
ECO	EXTERIOR CLEANOUT	WADE	8401-12 COF4-VP-81	GRADE	-	-	SEE PLANS	-	CAST IRON CLEANOUT ACCESS HOUSING, ANCHOR FLANGE, SECURED GASKETED COVER WITH CLEANOUT FERRULE WITH ABS PLUG. VANDAL PROOF SCREWS. SEE DETAIL 4/P501.
BWV	BACKWATER VALVE (SANITARY)	RECTORSEAL	97034	GRADE	-	-	4"	-	PVC BODY, FLAPPER WITH EXTENSION AND CAP. PROVIDE PVC SLEEVE TO FLUSH WITH FINISH GRADE. FIELD VERIFY DEPTH OF ACCESS HOUSING. ASSEMBLY MEETS IPC CODES. SEE DETAIL 4/P501.
RD-1	ROOF DRAIN	WADE	3000-42-ADF -53	ROOF	-	-	4"	-	DURA-COATED CAST IRON BODY, CAST IRON DOME, COMBINATION MEMBRANE FLASHING CLAMP/GRAVEL GUARD, ADJUSTABLE EXTENSION ASSEMBLY & UNDER DECK CLAMP.
RD-2	ROOF DRAIN	WADE	3012-42-53	ROOF	-	-	4"	-	DURA-COATED CAST IRON BODY, CAST IRON DOME, COMBINATION MEMBRANE FLASHING CLAMP/GRAVEL GUARD, UNDER DECK CLAMP.
ORD	OVERFLOW ROOF DRAIN	WADE	3000-42-ADF -53-D2	ROOF	-	-	8"	-	DURA-COATED CAST IRON BODY, CAST IRON DOME, COMBINATION MEMBRANE FLASHING CLAMP/GRAVEL GUARD, ADJUSTABLE EXTENSION ASSEMBLY & UNDER DECK CLAMP, 2" HIGH EXTERNAL WATER DAM.
DS	DOWN SPOUT	RECTORSEAL	G-0-N	PIPE	-	-	SEE PLANS	-	CAST NICKEL BRASS BODY, OFFSET NOZZLE, WALL FLANGE.
FWH	FREEZELESS WALL HYDRANT	WOODFORD	B65	WALL	3/4"	-	-	-	CONCEALED BOX TYPE WITH HINGED DOOR, CHROME FINISH, ASSE STANDARD 1019, INSTALL AT MINIMUM 18" ABOVE GRADE, GIVE HYDRANT KEY TO OWNER.
FRH	FREEZELESS ROOF HYDRANT	WOODFORD	SRH-MS	ROOF	3/4"	-	-	-	FREEZELESS HYDRANT, ROOF MOUNTING ASSEMBLY & SUPPORT, THREADED HOSE OUTLET WITH DUAL CHECK BFP ASSE 1052. COORDINATE INSTALLATION WITH ROOFING CONTRACTOR.
HA-1	HAMMER ARRESTOR	SIoux CHIEF	650 SERIES	PIPE	VARIES	-	-	-	LEAD-FREE CONSTRUCTION, ANSI/ASSE 1010 LISTED, PRE-CHARGED, PERMANENT SEALED AIR CHAMBER. INSTALL PER MANUFACTURER'S RECOMMENDATIONS.
TP-1	TRAP PRIMER ELECTRONIC	SIoux CHIEF	695-ES01	PIPE	1/2"	-	-	-	SURFACE MOUNT, ELECTRIC UNIT WITH 24 HOUR ELECTRIC TIMER, SOLENOID VALVE, INTEGRAL BALL VALVE, WATER HAMMER ARRESTOR & AIR GAP, 1/2" CW INLET & OUTLET, 120V POWER HARD-WIRED. COORDINATE WITH EC. PROVIDE STRAINER PRIOR TO UNIT. PROVIDE DISTRIBUTION SPLITTER. SEE DETAIL 1/P501.
TP-2	TRAP PRIMER ELECTRONIC	SIoux CHIEF	695-ES05	PIPE	1/2"	-	-	-	SURFACE MOUNT BOX, ELECTRIC UNIT WITH 24 HR ELECTRIC TIMER, SOLENOID VALVE, INTEGRAL BALL VALVE, WATER HAMMER ARRESTOR & VACUUM BREAKER, 1/2" CW INLET & 5 OUTLETS, 120V POWER HARD-WIRED, COORDINATE WITH EC. PROVIDE STRAINER PRIOR TO UNIT. SEE DETAIL 1/P501.
AP-1	ACCESS PANEL	ELMDOR	DW 14x14 CL-SS	WALL	-	-	-	-	14"x14" STEEL, 16 GAGE DOOR & FRAME, CONCEALED HINGE, CYLINDER LOCK & KEY, STAINLESS STEEL FINISH. CONCEALED FASTENING POINTS.
TMV-1	THERMOSTATIC MIXING VALVE	WATTS	LFMMV-M1	UNDER FIXTURE	1/2"	1/2"	-	-	MIXING VALVE WITH LEAD FREE DESIGN, ADJUSTABLE TEMPERATURE SET-POINT & LOCKABLE, INTEGRAL CHECK STOPS & STRAINERS, 3/8" INLETS & OUTLET. SET OUTLET TEMP AT 105 DEGREES F. ASSE 1070 LISTED.
TBV-1	THERMOSTATIC BALANCING VALVE	CALEFFI	THERMOSETTER SERIES 116141AC-001	PIPE	1/2"	-	-	-	1/2" THERMOSTATIC BALANCING VALVE ASSEMBLY, TEMPERATURE GAUGE, CHECK VALVE, BALL VALVE ON EACH SIDE OF VALVE. COORDINATE HWR TEMPERATURE WITH OWNER.
WB-1	WATER BOX	SIoux CHIEF	696-G1010WF	WALL	1/2"	-	-	-	RECESSED WALL MOUNTED BOX WITH FLANGE, 1/4 TURN BALL VALVE WITH HAMMER ARRESTOR AND 1/4" OUTLET. COORDINATE INSTALL HEIGHT WITH REFRIGERATOR WATER CONNECTION.

ELECTRIC WATER HEATER SCHEDULE									
MARK	LOCATION	TEMPERATURE RISE	CAPACITY GALLONS	AMPS	ELEMENT KW	VOLTAGE	PHASE	MANUFACTURER & MODEL NO.	NOTES
EW-1	MECH./ELEC. 25	70 DEG @ 25 GPH	30	22	4.5	208	1	AO SMITH DEL-30	ALL

NOTES:
1. INSTALL PER MANUFACTURER'S RECOMMENDATIONS.
2. SET OUTLET TEMPERATURE TO 120°F. VERIFY TEMPERATURE WITH OWNER.
3. PROVIDE AMTROL ST-5 THERMAL EXPANSION TANK ON COLD WATER LINE TO WATER HEATER.
4. PROVIDE WATER HEATER SUPPORT PLATFORM, HOLD RITE MODEL 50-SWHP-W OR APPROVED EQUAL.
5. COORDINATE WIRING WITH E.C.
6. SEE DETAIL 9/P501 FOR MORE INFORMATION.

CIRCULATION PUMP SCHEDULE										
MARK	MAXIMUM WORKING PRESSURE	MAXIMUM OPERATING TEMP (°F)	MOTOR				FLANGE SIZE (INCHES)	MATERIAL	MANUFACTURER & MODEL NO.	NOTES
			ELECTRICAL CHAR.	F.L. AMPS	HP	RPM				
CP-1	150 PSI	203	120/60/1	3.5	1/6	VARIABLE	3/4"	S.S.	BELL & GOSSETT ECO CIRC+ 20-18	ALL

NOTES:
1. PROVIDE WATTS #PF-S 3/4" FLANGE SET.
2. PROVIDE B & G #TC-1 TIMER KIT - SET TIMER PER OWNER'S REQUIREMENTS.
3. PUMP CP-1 SERVES WATER HEATER EWH-1.
4. PUMP DATA: 0.5 GPM AT 5 FEET HEAD.
5. SEE DETAIL 10/P501 FOR ADDITIONAL INFORMATION.

GAS LOAD TABLE					
MARK	INPUT (MBH)	REQUIRED PRESSURE	REQUIRED REGULATOR	SYSTEM PRESSURE	NOTES
RTU-1	180	7"	MAXITROL 325-5LB	2 PSI	ALL
RTU-2	180	7"	MAXITROL 325-5LB	2 PSI	ALL
RTU-3	65	7"	MAXITROL 325-3LB	2 PSI	ALL
RTU-4	180	7"	MAXITROL 325-3LB	2 PSI	ALL
RTU-5	65	7"	MAXITROL 325-3LB	2 PSI	ALL
RTU-6	65	7"	MAXITROL 325-3LB	2 PSI	ALL
RTU-7	65	7"	MAXITROL 325-3LB	2 PSI	ALL
TOTAL LOAD	800 MBH				

NOTES:
1. INSTALL AND VENT REGULATOR PER MANUFACTURER'S RECOMMENDATIONS.
2. COORDINATE WITH MECHANICAL CONTRACTOR FOR EQUIPMENT LOCATIONS AND REQUIRED CONNECTION.
3. PROVIDE VENT PROTECTOR DEVICE FOR OUTDOOR REGULATORS MODEL 13A30 OR 13A31.
4. GAS SYSTEM DESIGN FOR INITIAL METER OUTLET PRESSURE OF 2 PSIG WITH PRESSURE DROP OF 1 PSIG AND TOTAL LENGTH OF 1900 FEET.

