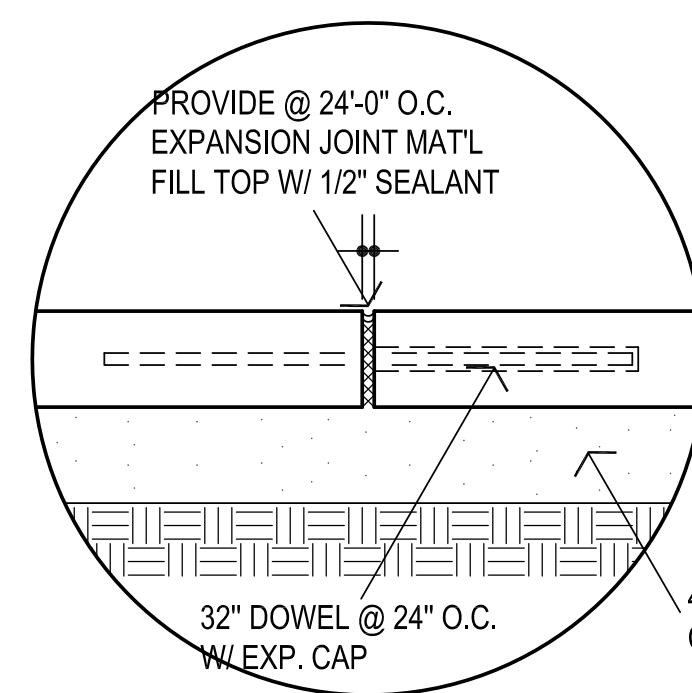


**2** FLAG POLE  
NOT TO SCALE

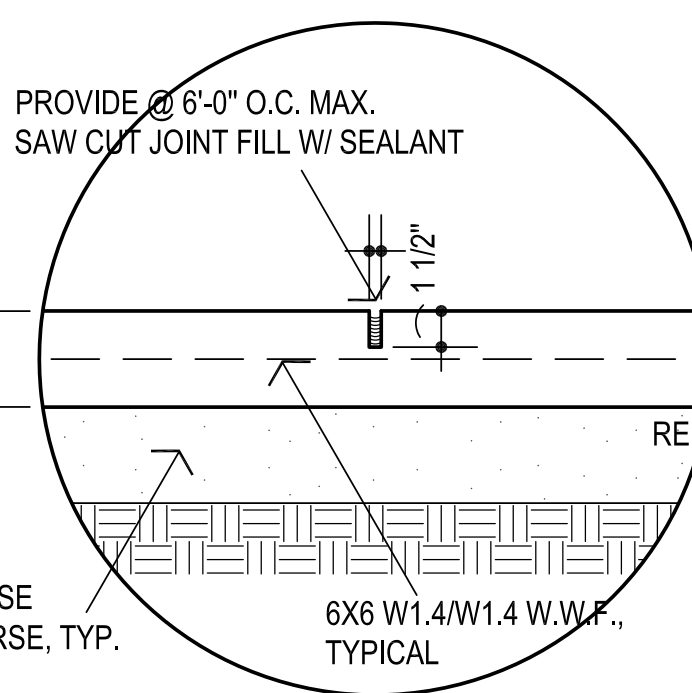
COORDINATE LOCATION  
WITH ARCHITECT

**1** SIDEWALK / PAVING SITE PLAN  
1" = 20'-0"

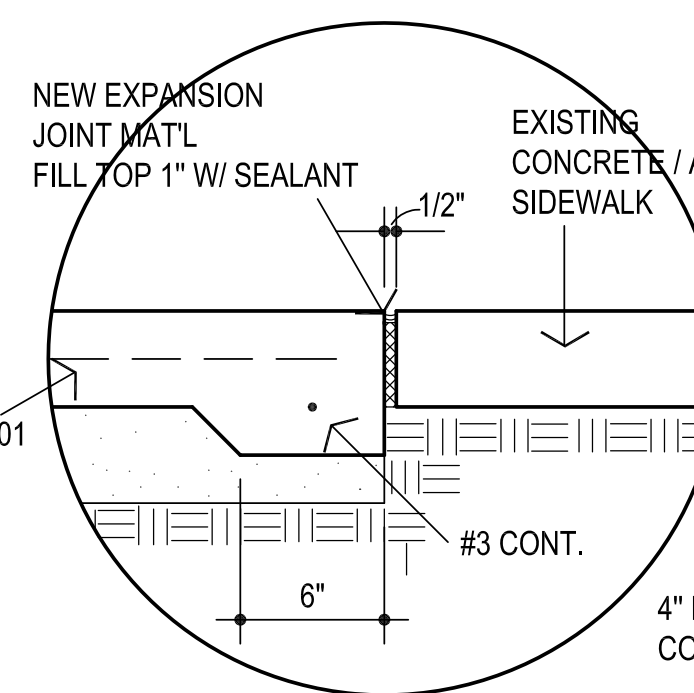
- GENERAL NOTES:**
1. PROVIDE DETECTABLE WARNING W/ DETECTABLE WARNING SYSTEMS / TACTILE PANELS W/ RAISED TRUNCATED DOMES TO MEET ADAAG. IMBED INTO CONCRETE. PROVIDE CLEAN INSTALLATION W/ TOOLED EDGES AROUND PANEL - PANEL EDGES TO BE FLUSH W/ CONCRETE PERIMETER. INSTALL AS PER MFR'S RECOMMENDATIONS. COLOR TO BE "BLACK".
  2. REFER CIVIL FOR GRADING & ADDITIONAL WORK
  3. COORDINATE LOCATION OF FLAG POLE W/ ARCHITECT



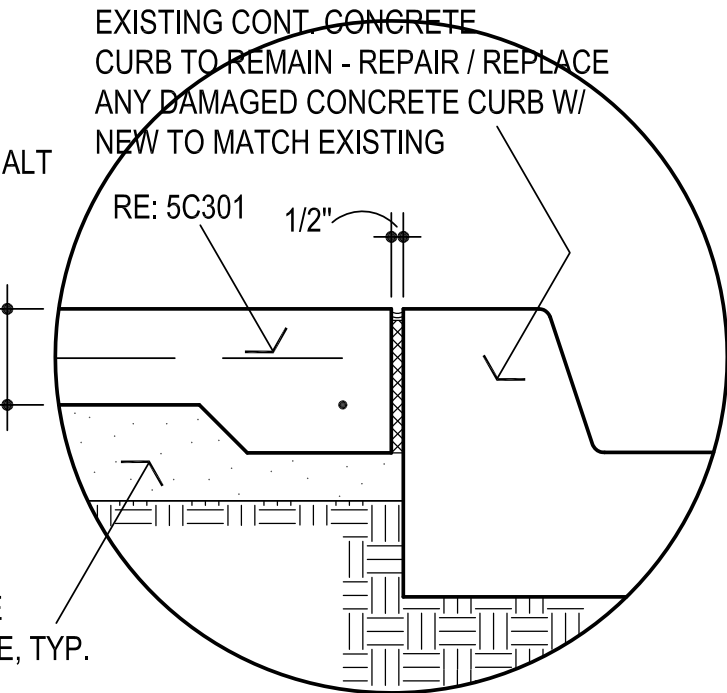
**3** SIDEWALK EXP. JOINT



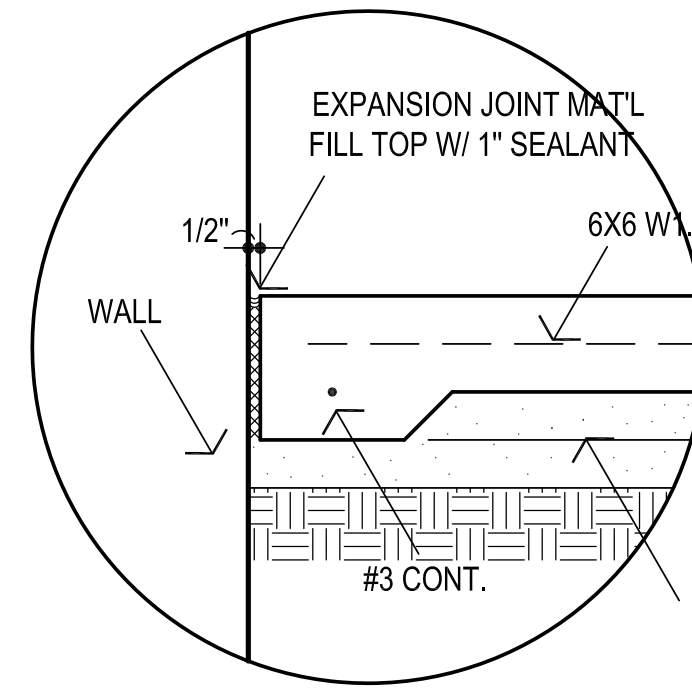
**4** SIDEWALK CONTROL JT.



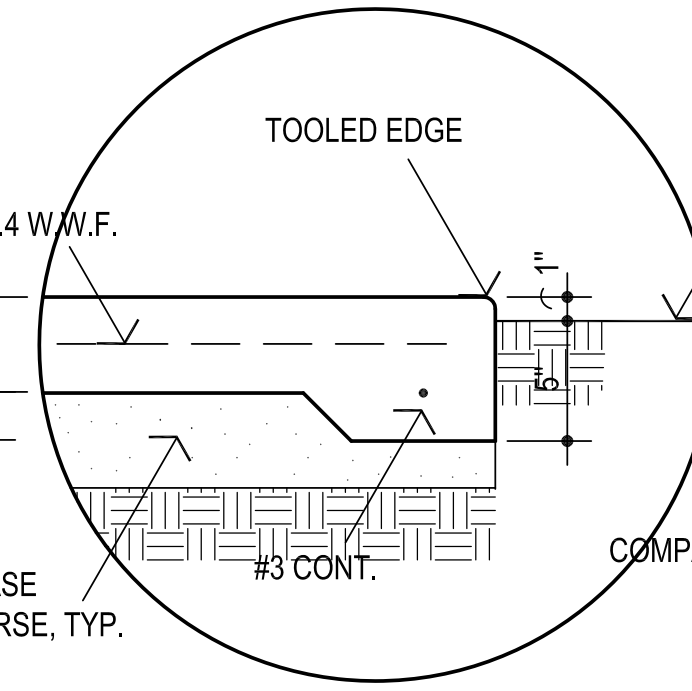
**5** EXISTING / NEW CONCRETE SIDEWALK



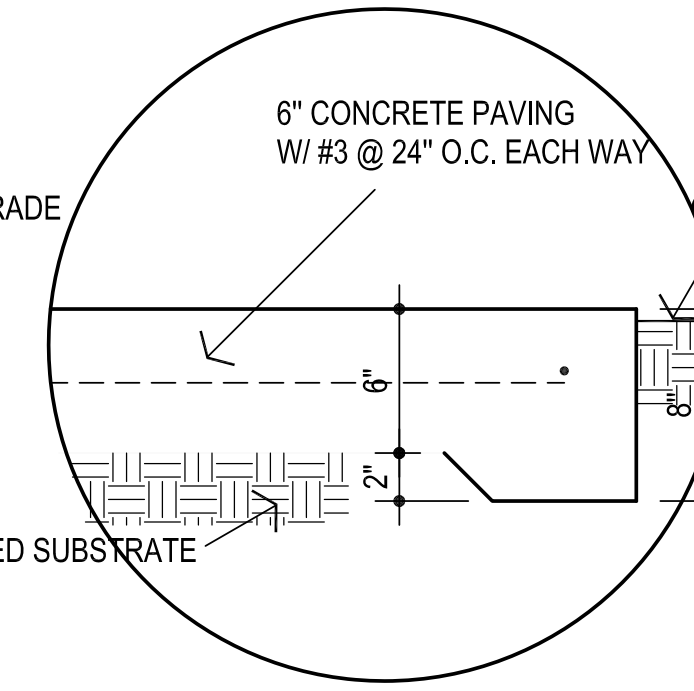
**6** SIDEWALK / CONC. CURB



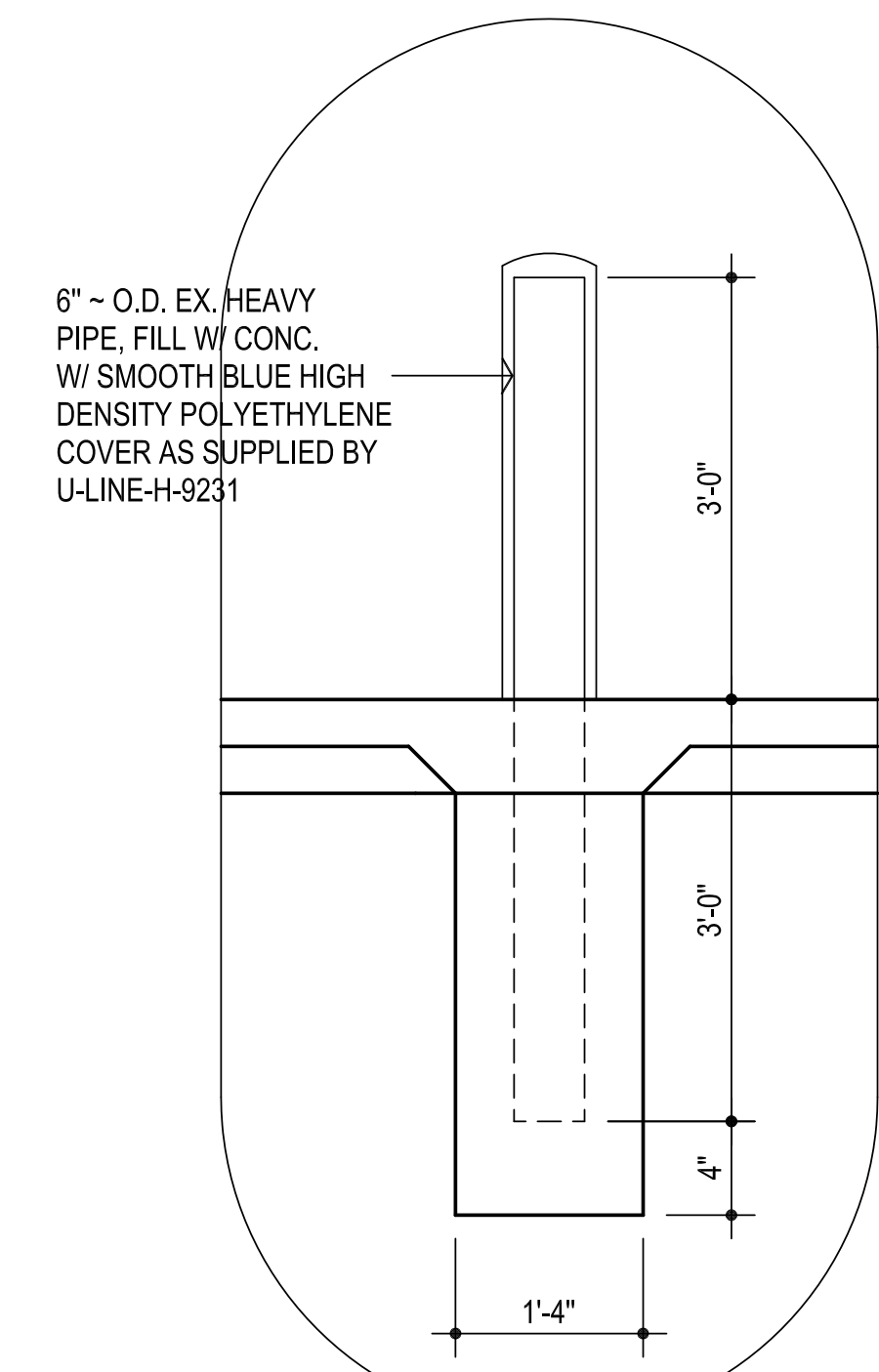
**7** SIDEWALK @ VERT. SURF.  
MOW STRIP @ VERT. SURF.



**8** SIDEWALK EDGE



**9** PAVING EDGE  
NOT TO SCALE



**10** BOLLARD

CG	drawn by
MA	checked by
AUGUST 2025	date
	revisions



WESTMOORE HIGH  
SCHOOL ENTRY  
UPGRADES

sheet no:

**C901**  
SIDEWALK / PAVING PLAN

OWNERSHIP USE OF DOCUMENTS:  
AGP EXPRESSLY RESERVES ITS  
COPYRIGHT AND OTHER PROPERTY  
RIGHTS OF ALL PLANS AND DRAWINGS  
DESIGNED AND/OR PRODUCED. PLANS  
AND DRAWINGS ARE NOT TO BE  
REPRODUCED IN ANY FORM OR MANNER  
WITHOUT THE EXPRESSED WRITTEN  
CONSENT OF AGP.