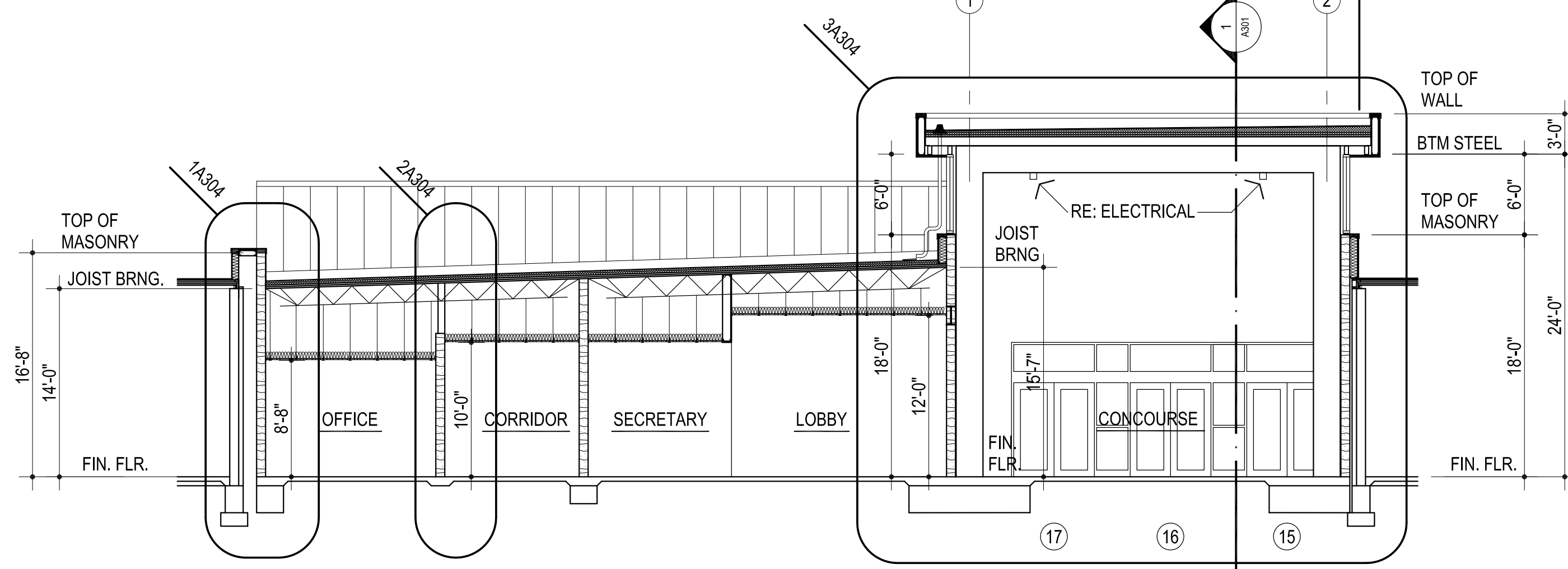
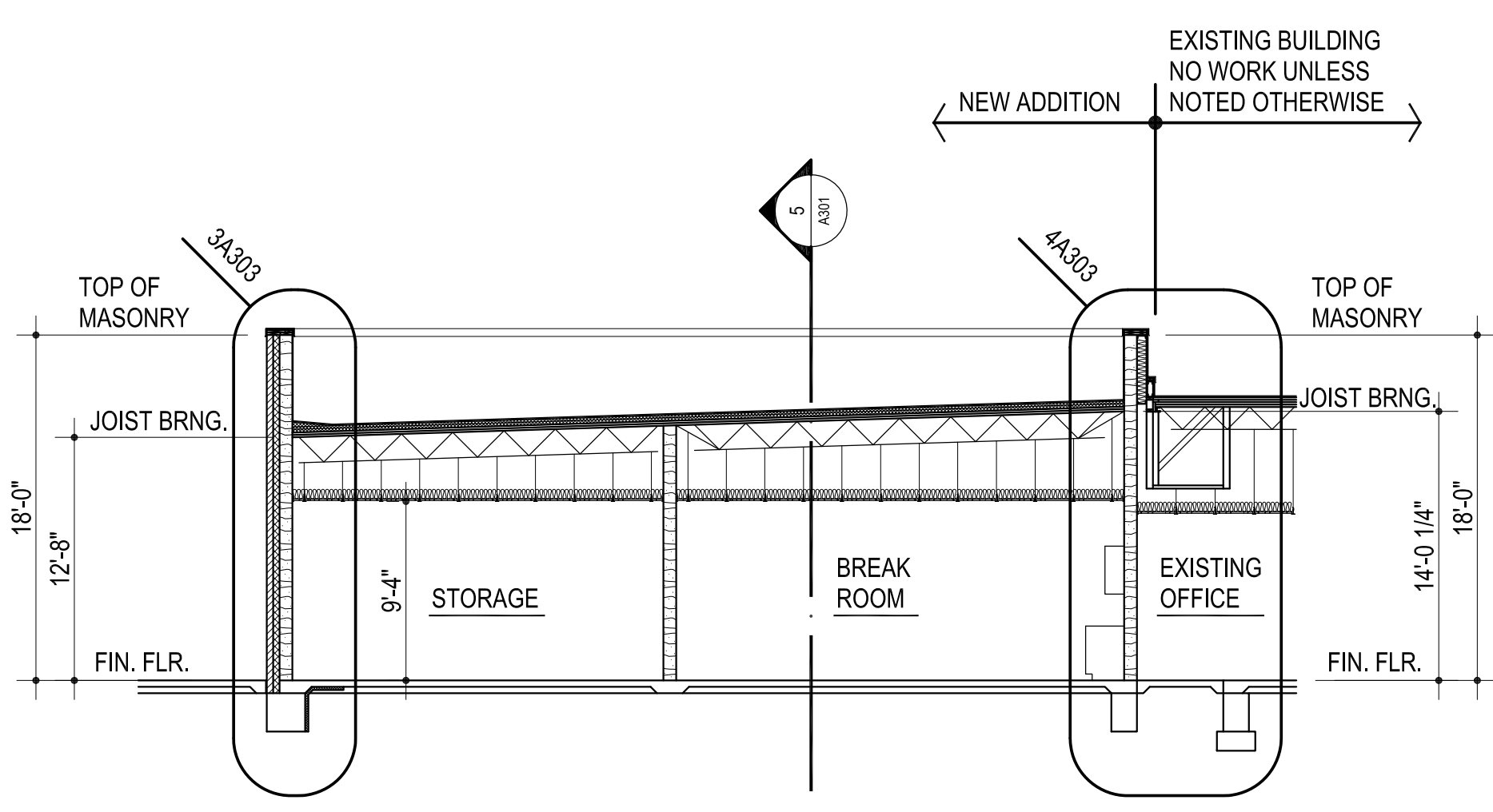


**1** BUILDING SECTION  
1/8" = 1'-0"

**2** BUILDING SECTION  
1/8" = 1'-0"

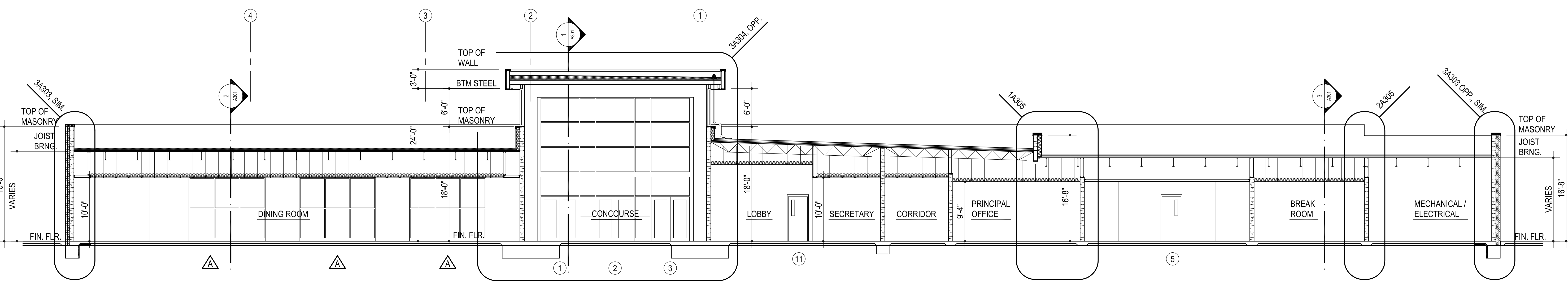


**3** BUILDING SECTION  
1/8" = 1'-0"

**4** BUILDING SECTION  
1/8" = 1'-0"

**GENERAL NOTES:**

- REFER STRUCTURAL DRAWINGS FOR TOP OF FOOTING ELEVATIONS - PROVIDE ALL MATERIALS REQUIRED FOR WALL SYSTEM TO EXTEND TO TOP OF FOOTING
- DO NOT SCALE DRAWINGS TO OBTAIN MATERIAL QUANTITIES. USE DRAWINGS WHICH ARE DIMENSIONED OR COORDINATE W/ EXISTING CONDITIONS &/OR ARCHITECT & ENGINEERS.
- PROVIDE LABELING AS PER IBC 703.7 MARKING AND IDENTIFICATION. BE LOCATED WITHIN 15 FEET (4572 MM) OF THE END OF EACH WALL AND AT INTERVALS NOT EXCEEDING 30 FEET (9144 MM) MEASURED HORIZONTALLY ALONG THE WALL OR PARTITION. INCLUDE LETTERING NOT LESS THAN 3 INCHES (76 MM) IN HEIGHT WITH A MINIMUM 3/8-INCH (9.5 MM) STROKE IN A CONTRASTING COLOR INCORPORATING THE SUGGESTED WORDING, "FIRE AND/OR SMOKE BARRIER - PROTECT ALL OPENINGS" OR OTHER WORDING.
- RE: SHEET A100 FOR PARTITIONS REQUIRED TO CLOSE-OUT TO BOTTOM OF DECKING OR STRUCTURE ABOVE.
- COORDINATE EXIT LIGHT FIXTURES MOUNTED IN DOOR FRAME (S) WITH ELECTRICAL CONTRACTOR
- COORDINATE TECHNOLOGY ITEMS MOUNTED IN DOOR FRAME (S) WITH ELECTRICAL CONTRACTOR



**5** BUILDING SECTION  
1/8" = 1'-0"

CG	drawn by
MA	checked by
AUGUST 2025	date
	revisions



WESTMOORE HIGH SCHOOL ENTRY UPGRADES

sheet no:

**A301**

BUILDING SECTIONS

OWNERSHIP USE OF DOCUMENTS:  
AGP EXPRESSLY RESERVES ITS COPYRIGHT AND OTHER PROPERTY RIGHTS OF ALL PLANS AND DRAWINGS DESIGNED AND/OR PRODUCED. PLANS AND DRAWINGS ARE NOT TO BE REPRODUCED IN ANY FORM OR MANNER WITHOUT THE EXPRESSED WRITTEN CONSENT OF AGP.