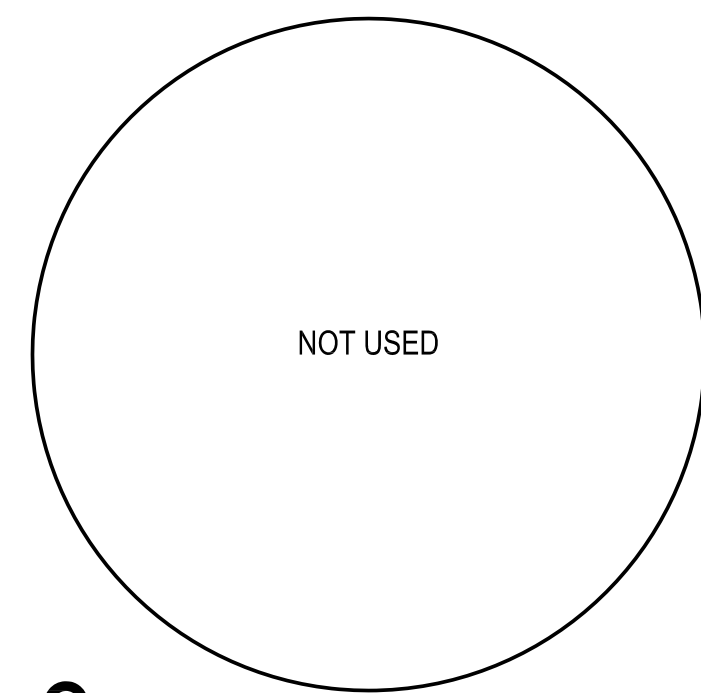
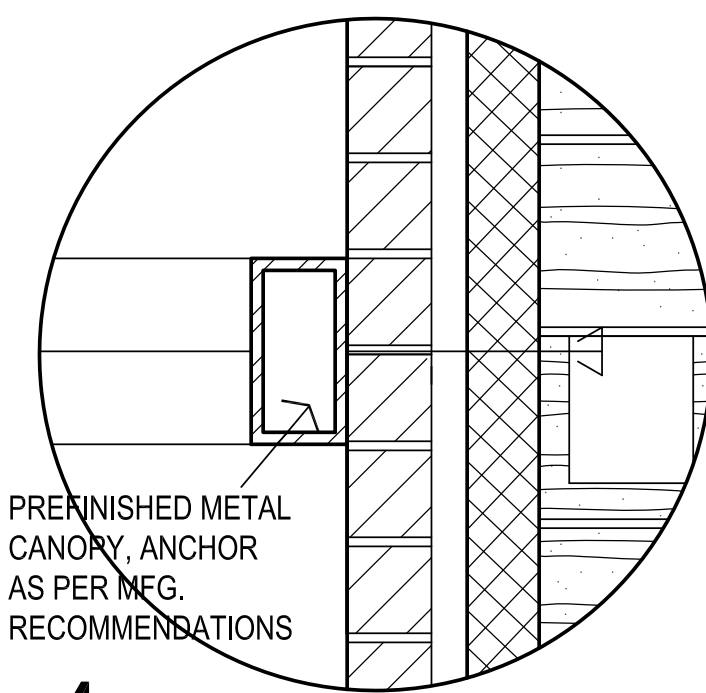


1 NORTH ELEVATION
1/8" = 1'-0"



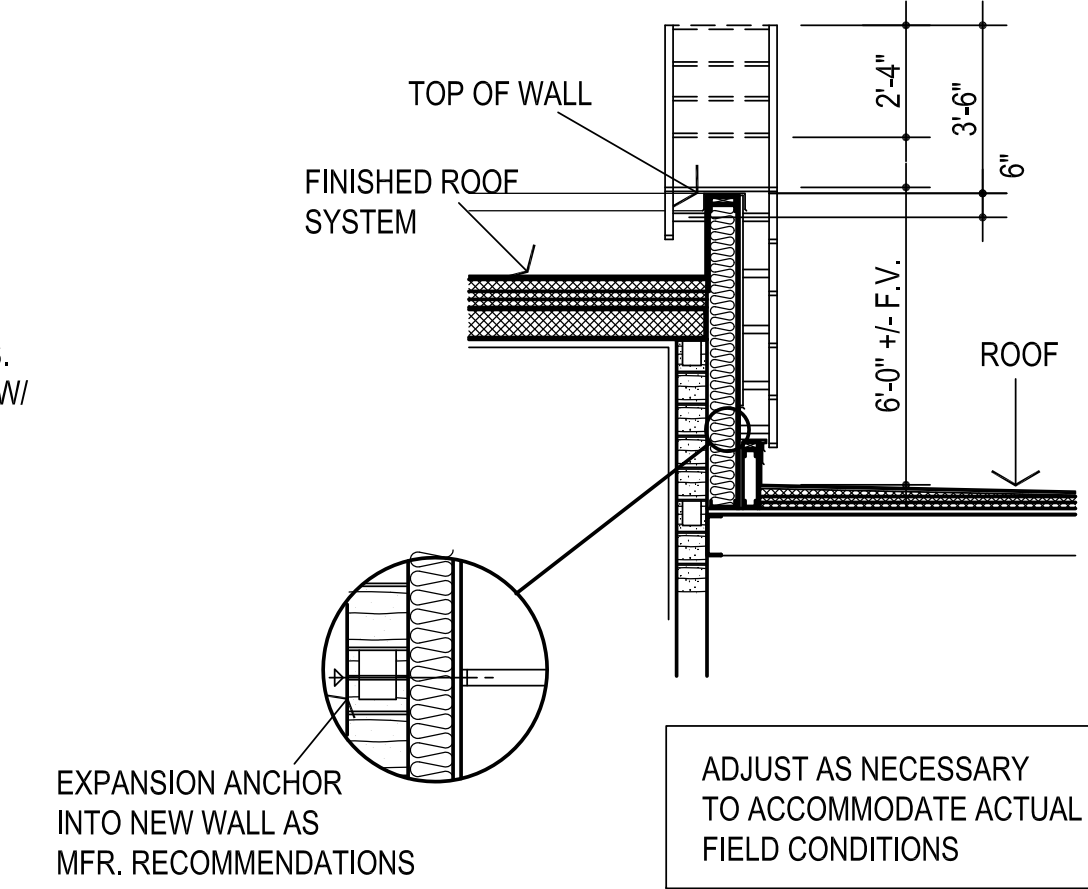
3



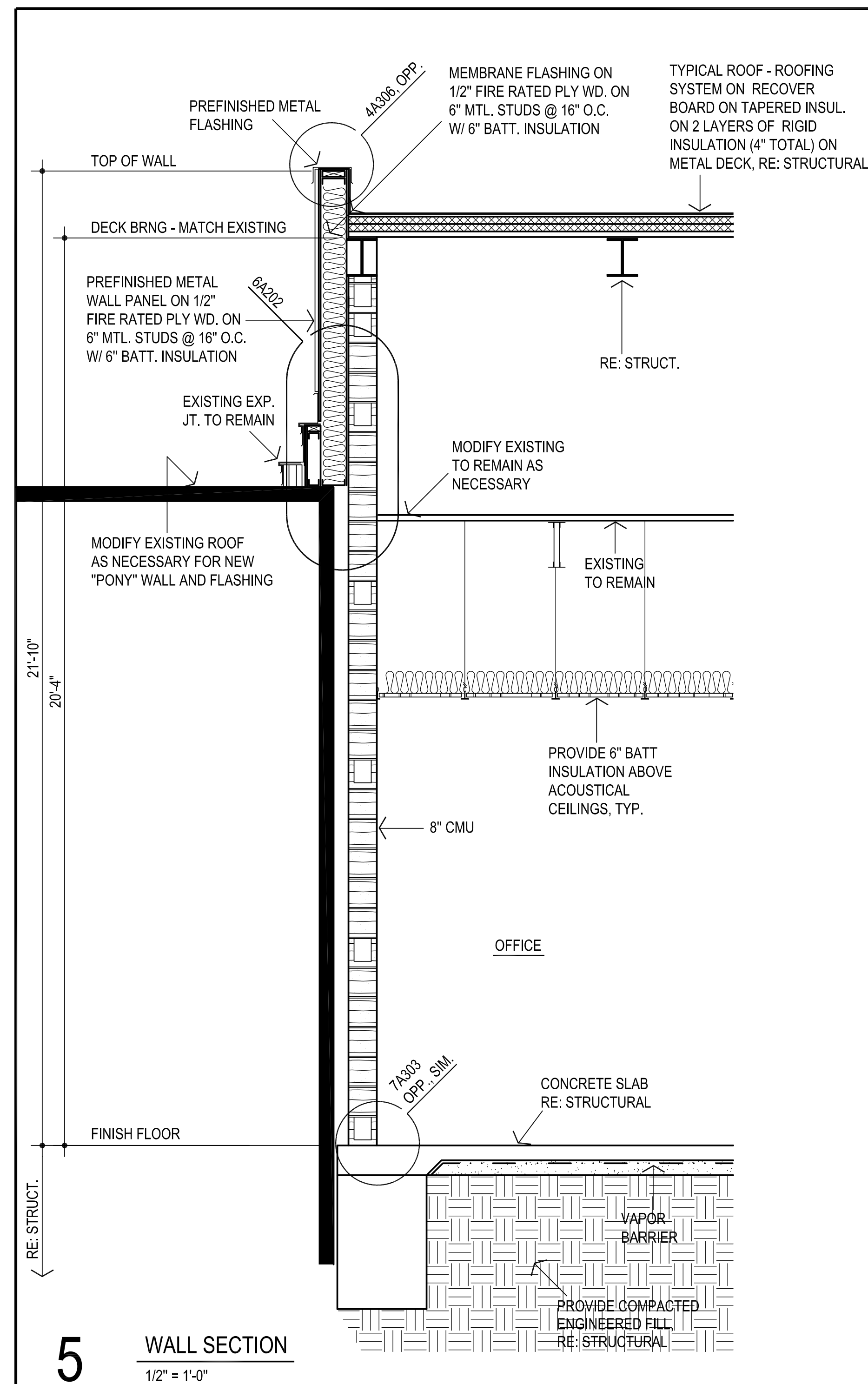
4

GENERAL NOTES:

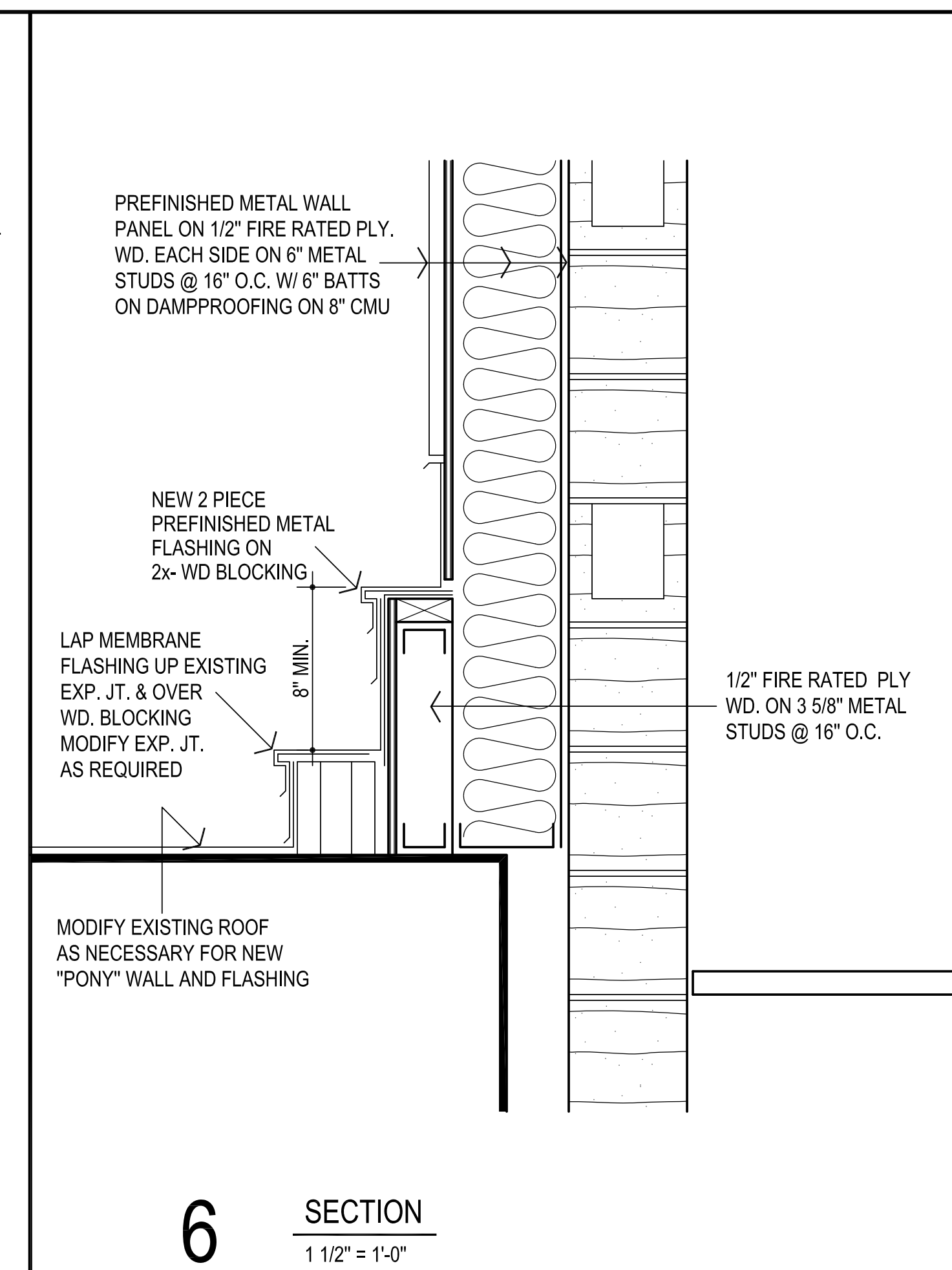
1. REFER STRUCTURAL DRAWINGS FOR TOP OF FOOTING ELEVATIONS - PROVIDE ALL MATERIALS REQUIRED FOR WALL SYSTEM TO EXTEND TO TOP OF FOOTING
2. DO NOT SCALE DRAWINGS TO OBTAIN MATERIAL QUANTITIES. USE DRAWINGS WHICH ARE DIMENSIONED OR COORDINATE W/ EXISTING CONDITIONS &/OR ARCHITECT & ENGINEERS.



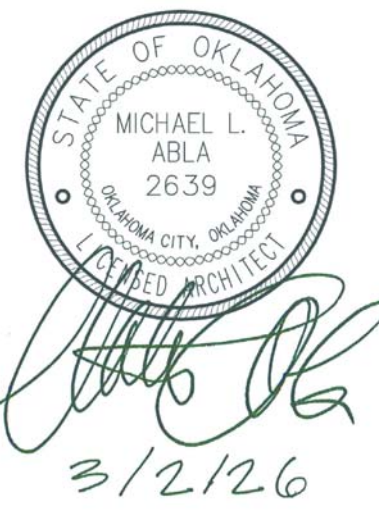
2 ALUMINUM LADDER
1/4" = 1'-0"



5 WALL SECTION
1/2" = 1'-0"



6 SECTION
1 1/2" = 1'-0"



CG
drawn by
MA
checked by
AUGUST 2025
date
revisions



WESTMOORE HIGH SCHOOL ENTRY UPGRADES

sheet no:

A202

ELEVATIONS

OWNERSHIP USE OF DOCUMENTS:

AGP EXPRESSLY RESERVES ITS COPYRIGHT AND OTHER PROPERTY RIGHTS OF ALL PLANS AND DRAWINGS DESIGNED AND/OR PRODUCED. PLANS AND DRAWINGS ARE NOT TO BE REPRODUCED IN ANY FORM OR MANNER WITHOUT THE EXPRESSED WRITTEN CONSENT OF AGP.