



CG
drawn by
MA
checked by
AUGUST 2025
date
revisions

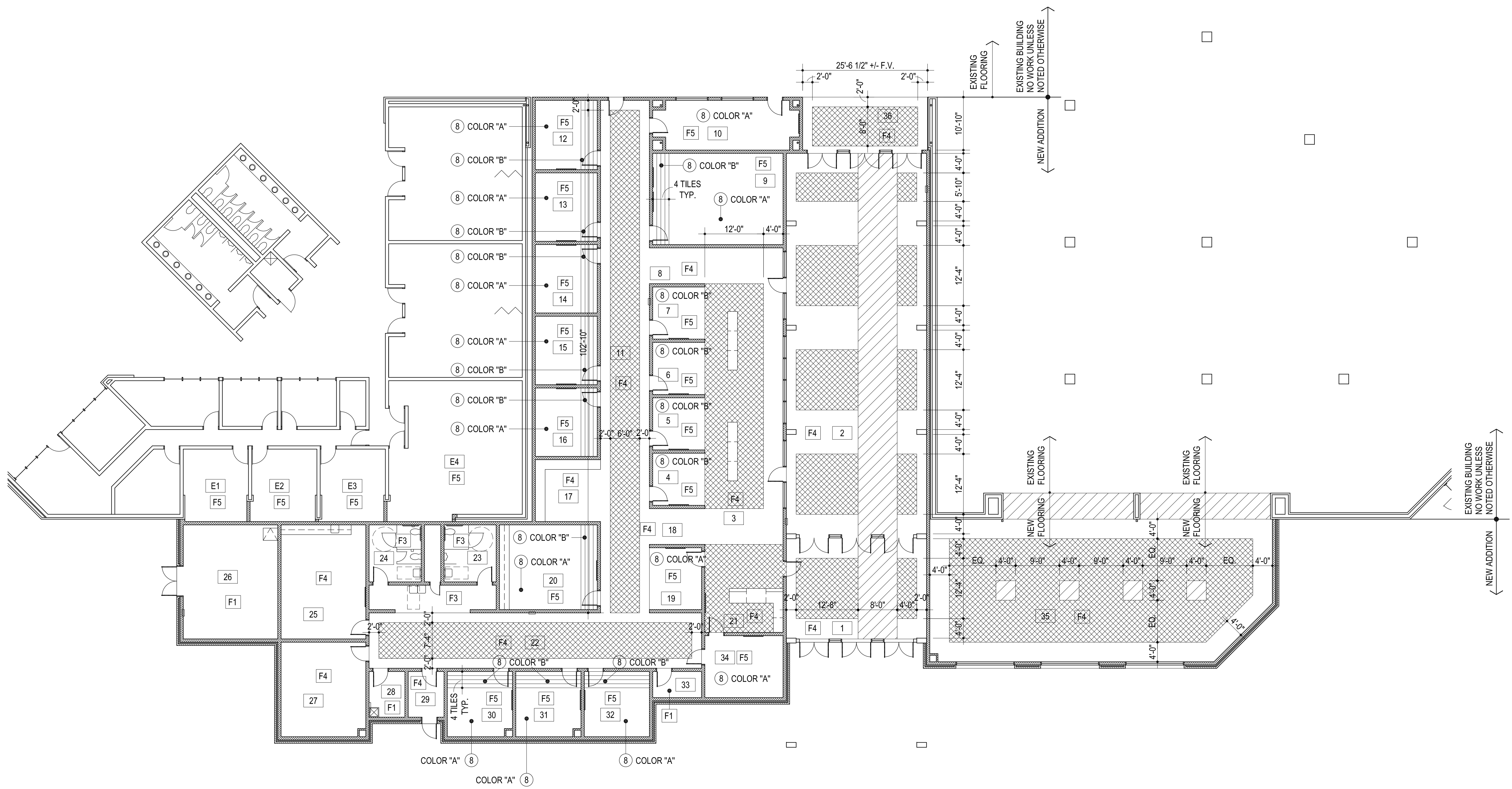


WESTMOORE HIGH SCHOOL ENTRY UPGRADES

sheet no:

A108

EQUIPMENT PLAN
OWNERSHIP USE OF DOCUMENTS:
AGP EXPRESSLY RESERVES ITS COPYRIGHT AND OTHER PROPERTY RIGHTS OF ALL PLANS AND DRAWINGS DESIGNED AND/OR PRODUCED. PLANS AND DRAWINGS ARE NOT TO BE REPRODUCED IN ANY FORM OR MANNER WITHOUT THE EXPRESSED WRITTEN CONSENT OF AGP.



1 FLOORING LOCATION PLAN
3/32" = 1'-0"
NORTH

- MISCELLANEOUS NOTES:
- DO NOT SCALE DRAWINGS TO OBTAIN MATERIAL QUANTITIES. USE DRAWINGS WHICH ARE DIMENSIONED OR COORDINATE W/ EXISTING CONDITIONS &/OR ARCHITECT & ENGINEERS.

DESCRIPTION	
FLOOR	F1 SEALED CONCRETE
FLOOR	F2 NUMBER NOT USED
FLOOR	F3 CERAMIC TILE FLOORING
FLOOR	F4 TERRAZZO TILE FLOORING
FLOOR	F5 CARPET

RE: ROOM FINISH SCHEDULE FOR ADDITIONAL INFORMATION
CONTRACTOR TO PROVIDE MATERIAL LAYOUT FOR REVIEW PRIOR TO INSTALLTION OF MATERIAL

TERRAZZO TILE LEGEND:

- FLOORAZZO - GEM COLLECTION COLOR - CUSTOM
- FLOORAZZO - GEM COLLECTION COLOR - ESPRESSO MACCHIATO
- FLOORAZZO - GEM COLLECTION COLOR - PEARL

CARPET TILE LEGEND:

- COLOR "A" INTERFACE OPEN AIR 410 COLOR - 106970 NATURAL
- COLOR "B" INTERFACE LUMINESCENT NIGHT LIGHTS COLOR - IRON POPPY 107236