



Michael L. Abila
3/2/26

CG

drawn by

MA

checked by

AUGUST 2025

date

revisions



WESTMOORE HIGH
SCHOOL ENTRY
UPGRADES

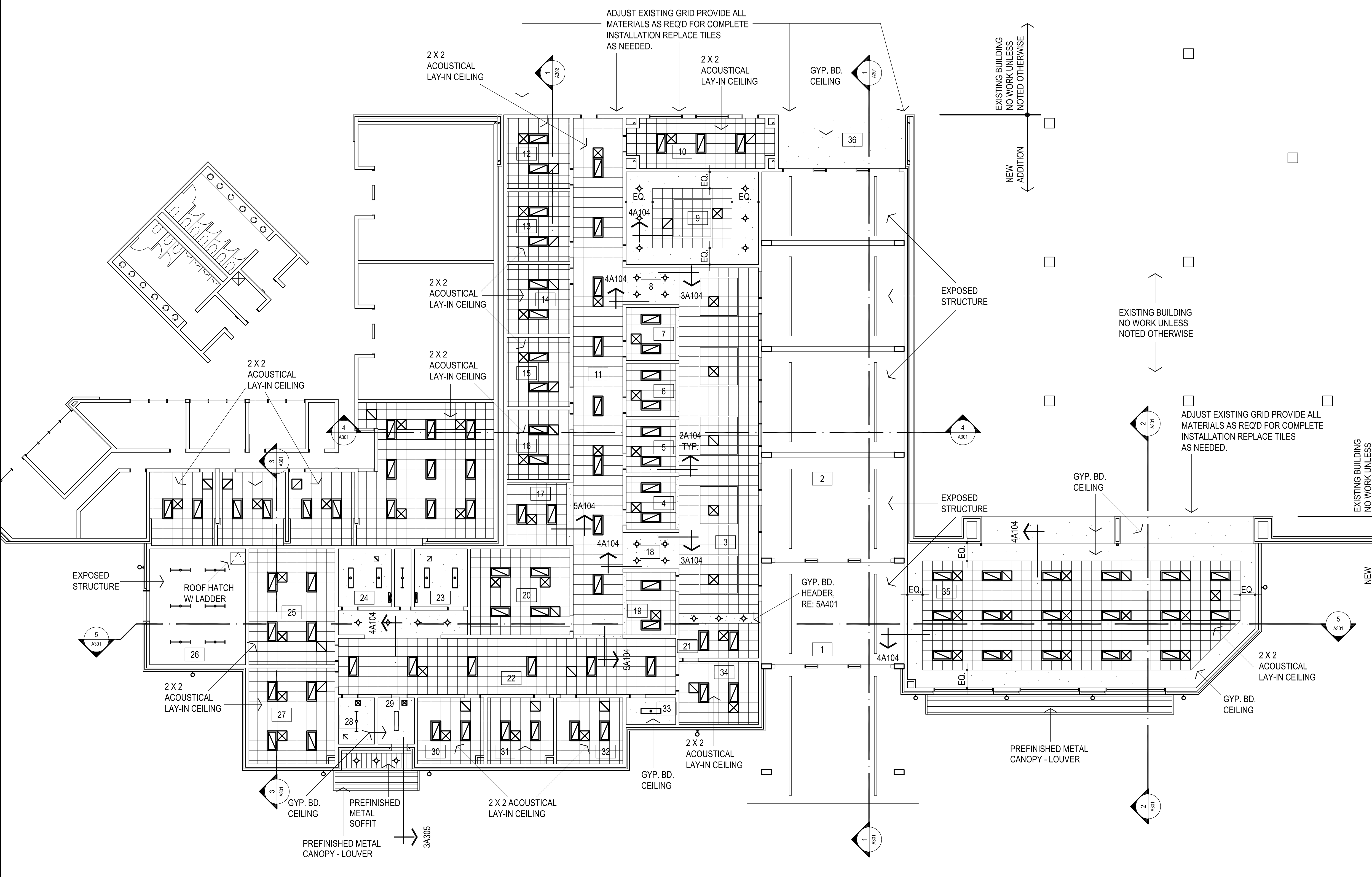
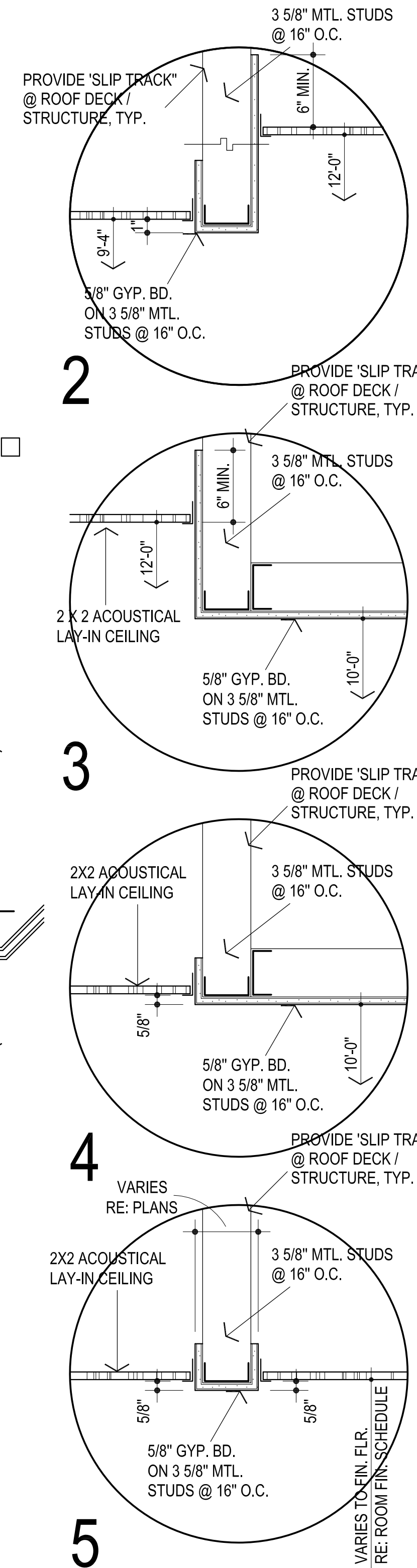
sheet no:

A104

REFLECTED CEILING PLAN

OWNERSHIP USE OF DOCUMENTS:

AGP EXPRESSLY RESERVES ITS
COPYRIGHT AND OTHER PROPERTY
RIGHTS OF ALL PLANS AND DRAWINGS
DESIGNED AND/OR PRODUCED. PLANS
AND DRAWINGS ARE NOT TO BE
REPRODUCED IN ANY FORM OR MANNER
WITHOUT THE EXPRESSED WRITTEN
CONSENT OF AGP.



1 REFLECTED CEILING PLAN
3/32" = 1'-0"
NORTH

LEGEND:

	MECHANICAL OPENINGS
	ELECTRICAL FIXTURES
	CEILING MOUNTED SMOKE DETECTOR, RE: ELEC
	INDICATES AREA / ROOM TO RECEIVE GYP. BD. CEILING
	INDICATES AREA / ROOM TO RECEIVE 2X2 LAY-IN CEILING

- NOTES:**
- ALL CEILINGS TO BE LOCATED AT 10'-0" A.F.F. UNLESS NOTED OTHERWISE.
 - THESE DRAWINGS INDICATE THE LIMITS OF FINISHES FOR AREAS THAT HAVE MULTIPLE TYPES AND COLORS. REFER ROOM FINISH SCHEDULE FOR CEILING MATERIAL AND COLOR DESIGNATIONS NOT SHOWN ON THIS SHEET.
 - ALL FURRDOWNS SHALL BE PAINTED UNLESS NOTED OTHERWISE.
 - ALL CEILING FURRDOWNS SHALL BE BRACED WITH LIGHT GAUGE FRAMING TO PREVENT SWAYING.
 - ALL CEILINGS, FURRDOWNS, PIPES, DUCTS, EQUIPMENT, ETC. SHALL BE SUSPENDED FROM STRUCTURAL STEEL ABOVE. DO NOT SUPPORT ITEMS FROM METAL DECK ONLY. REFER STRUCTURAL FOR REQUIREMENTS OF ATTACHMENT TO STEEL.
 - MECHANICAL AND ELECTRICAL DISCIPLINES ARE SHOWN FOR INFORMATION PURPOSES ONLY. REFER TO CONSULTANT SHEETS FOR EXACT FIXTURE LOCATIONS. IF DISCREPANCIES ARE FOUND COORDINATE WITH ARCHITECT PRIOR TO INSTALLATION.
 - COORDINATE LOCATION OF ANY CONTROL JOINTS NOT SHOWN WITH THE ARCHITECT PRIOR TO INSTALLATION.
 - PROVIDE DRYWALL CONTROL JOINTS AT WALLS, CEILINGS AND SOFFITS, FURRINGS, ETC., WHERE SHOWN ON DRAWINGS, AND THE FOLLOWING LOCATIONS (SHOWN OR NOT):
A. AT OTHER LOCATIONS WHERE STRUCTURAL SUPPORT FOR FRAMING CHANGES LEVEL OR MATERIAL, OR WHERE DIFFERENTIAL MOVEMENT IS LIKELY TO OCCUR.
B. AT LOCATIONS WHERE CEILING FRAMING MEMBERS CHANGE DIRECTION.
 - C. AT 30" MAX SPACING IN ANY UNINTERRUPTED STRAIGHT PLANE OR CURVE FOR WALLS, CEILINGS AND SOFFITS (IN TWO DIRECTIONS).
D. AT DOORS, WINDOWS AND OPENINGS LESS THAN OR EQUAL TO 4'-0" WIDE, FROM ONE EDGE OF FRAME, TO TOP OF WALL, AND TO FLOOR IF OPENING DOES NOT EXTEND TO FLOOR.
E. AT DOORS, WINDOWS AND OPENINGS GREATER THAN 4'-0" WIDE, FROM BOTH EDGES OF FRAME, TO TOP OF WALL, AND TO FLOOR IF OPENING DOES NOT EXTEND TO FLOOR.
F. AT BUILDING CONTROL JOINTS, SEISMIC JOINTS AND EXPANSION JOINTS.
G. AT LOCATIONS OF EXTREME DIFFERENCE IN THE DIMENSIONS OF ADJACENT DRYWALL AREAS.
 - REFER TO TECHNOLOGY SHEETS & SPECS FOR OTHER CEILING TILE REQUIREMENTS.

- NOTES:**
- REFER MECHANICAL & ELECTRICAL FOR ANY ADDITIONAL CEILING MOUNTED FIXTURES
 - REFER TO SHEET A100 FOR LOCATIONS OF FIRE-RATED WALLS
 - DO NOT SCALE DRAWINGS TO OBTAIN MATERIAL QUANTITIES. USE DRAWINGS WHICH ARE DIMENSIONED OR COORDINATE W/ EXISTING CONDITIONS &/OR ARCHITECT & ENGINEERS.