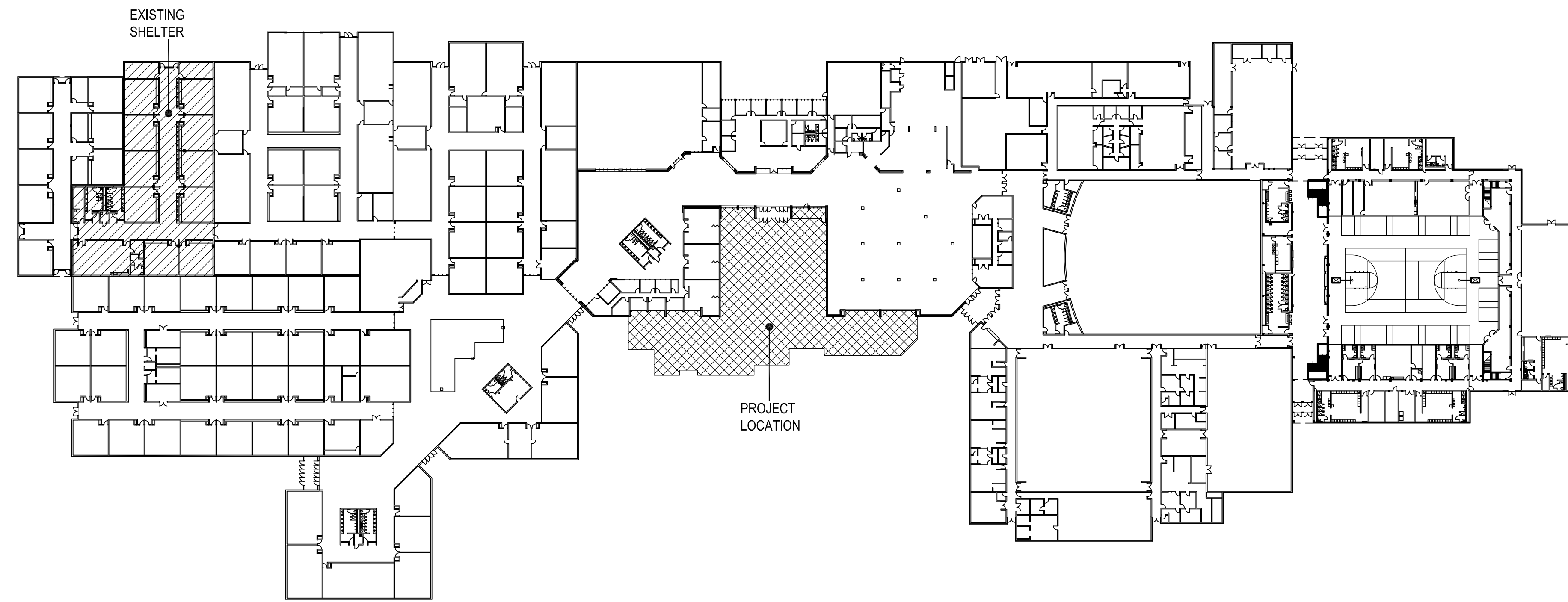


1 LIFE SAFETY PLAN
1/16" = 1'-0"



2 EXISTING FLOOR PLAN
1/64" = 1'-0"

CONSTRUCTION DATA (TABLE 503):

OCCUPANCY -	E
CONSTRUCTION TYPE -	TYPE II - B
BASIC ALLOWABLE AREA -	58,000 S.F. PER FLOOR
ALLOWABLE STORIES -	3
ACTUAL STORIES -	1
ACTUAL HEIGHT -	16'-8" / 27'-0"

BUILDING SIZES:

BUILDING :	1 STORY @ 14,600 S.F.
------------	-----------------------

STRUCTURAL FIRE PROTECTION (TABLE 601):

EXTERIOR BEARING WALLS	0 HOUR
INTERIOR BEARING WALLS	NONCOMBUSTIBLE
EXTERIOR NONBEARING WALLS	NONCOMBUSTIBLE
COLUMNS	0 HOUR
BEAMS	0 HOUR
PERMANENT PARTITIONS	NONCOMBUSTIBLE
FLOOR ASSEMBLIES	0 HOUR
ROOF ASSEMBLIES	0 HOUR
EXTERIOR OPENINGS	N/A

PASSIVE FIRE SAFETY SYSTEM:

PORTABLE FIRE EXTINGUISHERS (RE: SHEETS A107)
TRAVEL DISTANCE = 250'-0" MAX.
ACTUAL MAX. TRAVEL DISTANCE = 160'-0"
DEADEND - 50'-0" MAX.
ACTUAL DEADEND - NONE

ACTIVE FIRE SAFETY SYSTEMS (EXISTING & NEW ADDITION):

FIRE SPRINKLER SYSTEM THROUGHOUT
FIRE ALARM SYSTEM
SMOKE DETECTION
AUTOMATIC AIR HANDLING EQUIP. SHUTDOWN
EXIT LIGHTS/EMERGENCY LIGHTS BATTERY

CODES/REGULATIONS USED (CITY OF OKLAHOMA CITY):

2018 IBC - INTERNATIONAL BUILDING CODE
AMERICAN WITH DISABILITIES ACT ACCESSIBILITY GUIDELINES
2017 NATIONAL ELECTRICAL CODE
2018 INTERNATIONAL PLUMBING CODE
2018 INTERNATIONAL MECHANICAL CODE
2018 INTERNATIONAL FIRE CODE
2009 ENERGY CONSERVATION CODE
ASSOCIATED SUPPLEMENTS TO EACH CODE

OCCUPANT LOAD (TABLE 1004.5):

OFFICE ADDITION: TOTAL OCCUPANTS = 97

EGRESS WIDTH:

OFFICE ADDITION: REQUIRED 20"
OFFICE ADDITION: PROVIDED 252"

PLUMBING FIXTURES (TABLE 2902.1):

OFFICE ADDITION
TOTAL OCCUPANT LOAD (INSTITUTIONAL) = 97

TOTAL REQUIRED:	TOTAL PROVIDED
WATER CLOSETS = 2	WATER CLOSETS = 3
LAVATORIES = 2	URINALS = 1
DRINKING FOUNTAINS = 1	LAVATORIES = 2
SERVICE SINKS = 1	DRINKING FOUNTAINS = 2
	SERVICE SINKS = 1

— DENOTES 20 MINUTE RATED PARTITIONS CLOSE-OUT TO BOTTOM OF DECKING - CLOSE-OUT PARTITIONS TO BE CMU WHERE INDICATED ON STRUCTURAL FOR LOAD BEARING CONDITIONS. ALL OTHER INDICATED LOCATIONS TO BE CONSTRUCTED OF 1 LAYER OF 5/8" FIRE RATED GYP. BOARD EACH SIDE ON 6" METAL STUDS @ 16" O.C. STAGGER ALL JOINTS & PROVIDE FIRE TAPE. SEAL ALL PENETRATIONS W/ CONTINUOUS FIRE STOPPING INSULATION &/OR SEALANT.

— DENOTES FIRE WALL BETWEEN NEW ADDITION & EXISTING BUILDING - 2 HOUR AS PER TABLE 706.4

NOTE:
THIS PLAN INDICATES WALL TO CLOSE OUT TO STRUCTURE DUE TO FIRE CODE REQUIREMENTS.
IT IS NOT A REPRESENTATION OF ALL WALLS REQ'D TO CLOSE OUT FOR STRUCTURAL / NO CEILING PRESENT / ETC. LOCATIONS

313 S. E. 5th Street
MOORE, OK. 73160
405.735.3477
AGP@theAGP.net
www.theAGP.net

CEDAR CREEK

CIVIL

KFC ENGINEERING

STRUCTURAL

SALAS O'BRIEN

MECHANICAL / ELECTRICAL



CG
drawn by

MA
checked by

AUGUST 2025
date

revisions



WESTMOORE HIGH
SCHOOL ENTRY
UPGRADES

sheet no:

A100

LIFE SAFETY PLAN

OWNERSHIP USE OF DOCUMENTS:

AGP EXPRESSLY RESERVES ITS
COPYRIGHT AND OTHER PROPERTY
RIGHTS OF ALL PLANS AND DRAWINGS
DESIGNED AND/OR PRODUCED. PLANS
AND DRAWINGS ARE NOT TO BE
REPRODUCED IN ANY FORM OR MANNER
WITHOUT THE EXPRESSED WRITTEN
CONSENT OF AGP.