



4/25/22

CG  
designed by  
MA  
checked by  
APRIL 2022  
dab

revisions

MOORE PUBLIC SCHOOLS  
BOARD OF EDUCATION  
MOORE, OKLAHOMA

MOORE Public Schools  
LEARNING FOR LIFE

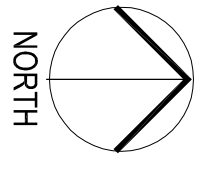
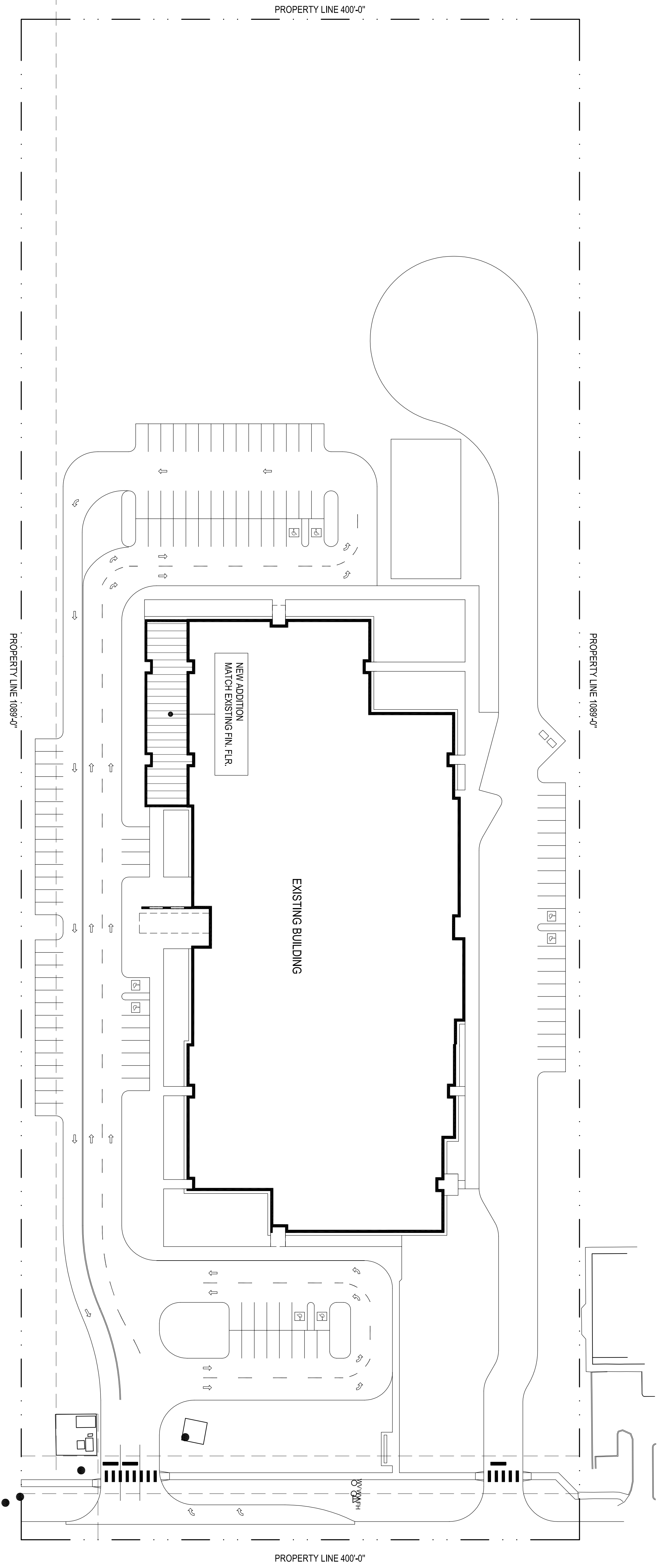
NEW 2022 CLASSROOM  
ADDITION -  
SOUTH LAKE  
ELEMENTARY SCHOOL

Sheet No.

# C100

OWNERSHIP USE OF DOCUMENTS:

AGP EXPRESSLY RESERVES ITS  
COPYRIGHT AND OTHER PROPERTY  
RIGHTS OF ALL PLANS AND DRAWINGS  
DESIGNED AND/OR PRODUCED HEREIN.  
REPRODUCTION OR TRANSMISSION  
WITHOUT THE EXPRESSED WRITTEN  
CONSENT OF AGP.



OVERALL SITE PLAN  
1" = 40'-0"

IMPERVIOUS PAVING CALCULATIONS:  
PAVING TO BE REMOVED: 2,116 S.F.  
NEW BUILDING = 4,130 S.F.  
NEW PAVING ADDED = NONE S.F.  
TOTAL NEW IMPERVIOUS AREA = 2,014 S.F.