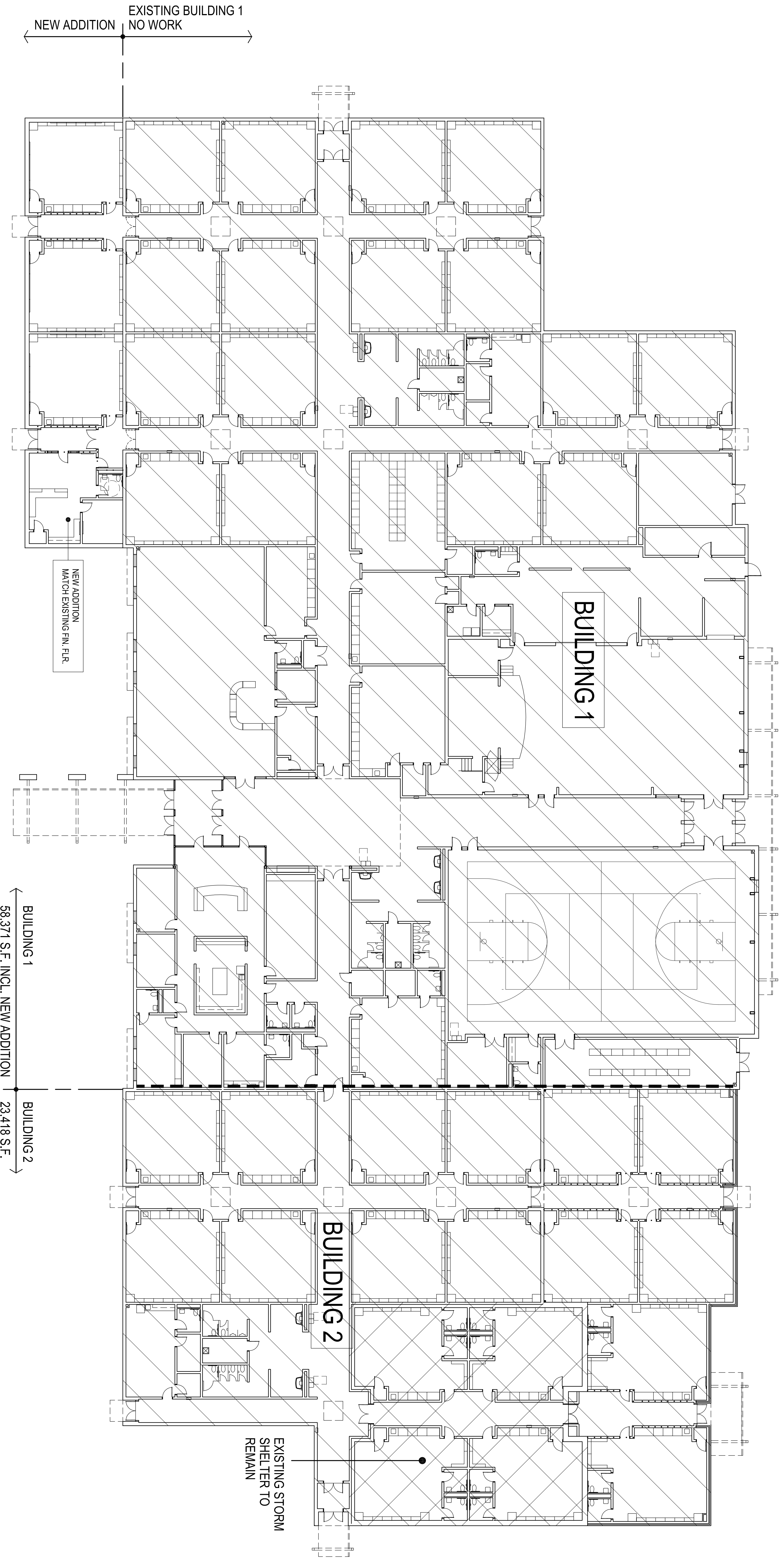


4/25/22

CG  
designed by  
MA  
checked by  
APRIL 2022  
dab  
revisions



CONSTRUCTION DATA (TABLE 503):

|                        |   |
|------------------------|---|
| OCCUPANCY -            | E   |
| CONSTRUCTION TYPE -    | TYPE II - B   |
| BASIC ALLOWABLE AREA - | 58,000 S.F. PER FLOOR (BLDG. #2 INCR. TO 69,600 S.F. SECTION 506) |
| ALLOWABLE STORIES -    | 3   |
| ACTUAL STORIES -       | 1   |
| ACTUAL HEIGHT -        | 16'-0"  |

BUILDING SIZES:  
EXISTING BUILDING:  
NEW ADDITION:

|   |                |
|---|----------------|
| STRUCTURAL FIRE PROTECTION (TABLE 601): | 0 HOUR         |
| EXTERIOR BEARING WALLS                  | NONCOMBUSTIBLE |
| EXTERIOR NONBEARING WALLS               | NONCOMBUSTIBLE |
| COLUMNS                                 | 0 HOUR         |
| BEAMS                                   | 0 HOUR         |
| PERMANENT PARTITIONS                    | NONCOMBUSTIBLE |
| FLOOR ASSEMBLIES                        | 0 HOUR         |
| ROOF ASSEMBLIES                         | 0 HOUR         |
| EXTERIOR OPENINGS                       | N/A            |

PASSIVE FIRE SAFETY SYSTEM:

PORTABLE FIRE EXTINGUISHERS (RE: SHEET A105)  
TRAVEL DISTANCE = 200'-0" MAX.  
DEAD-END - 50'-0" MAX.  
ACTUAL DEAD-END - NONE

ACTIVE FIRE SAFETY SYSTEMS:  
FIRE SPRINKLER SYSTEM THROUGHOUT  
FIRE ALARM SYSTEM  
SMOKE DETECTION  
AUTOMATIC AIR HANDLING EQUIP. SHUTDOWN  
EXIT LIGHTS/EMERGENCY LIGHTS BATTERY

OCCUPANT LOAD (TABLE 1004.1.1):

EXISTING BUILDING 1 - 1,576 OCC. + ADDITION - 117 OCC. = 1,693 OCCUPANTS  
EXISTING BUILDING 2: 846 OCCUPANTS  
TOTAL OCCUPANTS = 2,539 OCC.

EXISTING EGRESS WIDTH:  
BUILDING 1: REQUIRED 338'-6"  
BUILDING 2: PROVIDED 107'  
NEW ADDITION: REQUIRED 23.47'

PLUMBING FIXTURES (TABLE 2902.1):

EXISTING TOTAL OCCUPANT LOAD  
(EDUCATION + ASSEMBLY) = 2,422  
NEW ADDITION = 117  
TOTAL OCCUPANTS = 2,539 OCC.

TOTAL REQUIRED:  
WATER CLOSETS / URINALS = 45  
LAVATORIES = 38  
DRINKING FOUNTAIN = 19  
SERVICE SINKS = 1

.....  
DENOTES 1 HR. RATED PARTITIONS CLOSE-OUT TO BOTTOM OF DECKING - CLOSE-OUT PARTITIONS TO BE ON/UP WHERE INDICATED ON STRUCTURAL FOR LOAD BEARING CONDITIONS. ALL OTHER INDICATED LOCATIONS TO BE CONSTRUCTED OF 1 LAYER OF 5/8" FIRE RATED GYP. BOARD EACH SIDE ON 6" METAL STUDS @ 16" O.C. STAGGER ALL JOINTS & PROVIDE FIRE TAPE SEAL ALL PENETRATIONS W/CONTINUOUS FIRE STOPPING INSULATION &OR SEALANT.

===== EXISTING / NEW 2 HOUR PARTITIONS - REPRESENTS EXISTING MASONRY / CONCRETE WALLS

NOTE:  
THIS PLAN INDICATES WALL TO CLOSE OUT TO STRUCTURE DUE TO FIRE CODE REQUIREMENTS.  
IT IS NOT A REPRESENTATION OF ALL WALLS NEED TO CLOSE OUT FOR STRUCTURAL / NO CEILING PRESENT / WALL @ "CLOUDS" ETC. LOCATIONS