

**MOORE PUBLIC SCHOOLS -  
SOUTH LAKE ELEMENTARY SCHOOL –  
2022 CLASSROOM ADDITION**

Moore Public Schools - Moore, Oklahoma  
AGP - Moore, Oklahoma

---

**CONSTRUCTION BULLETIN NO. 2**

November 14, 2022

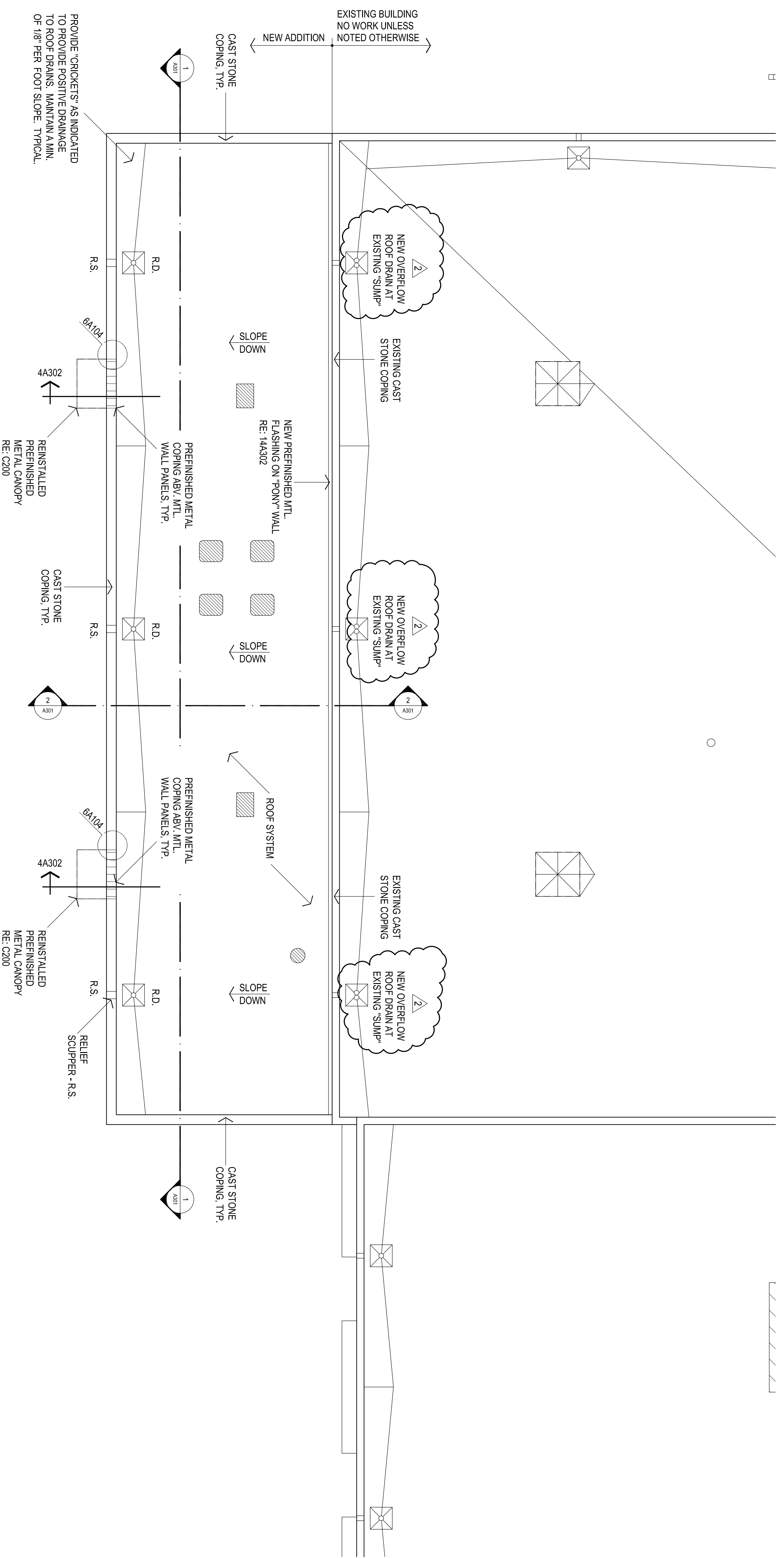
8 Total Pages

---

1. ADD THREE NEW OVERFLOW ROOF DRAINS AS INDICATED ON ATTACHED DRAWINGS. NEW ORDs TO BE LOCATED IN EXISTING SUMP WITH EXISTING ROOF DRAINS TO REMAIN. LOCATE NEW ROOF DRAIN PIPING AS INDICATED TO AVOID NEW DUCTWORK ABOVE NEW CEILINGS. DISCHARGE DOWNSPOUT TO BE HELD AS HIGH AS POSSIBLE AND MATCH UNITS SPECIFIED/PROVIDED FOR THIS PROJECT. COORDINATE WITH ROOFING CONTRACTOR.
2. TECHNOLOGY REVISIONS AS PER ATTACHED DRAWINGS.

END OF CONSTRUCTION BULLETIN NO. 2

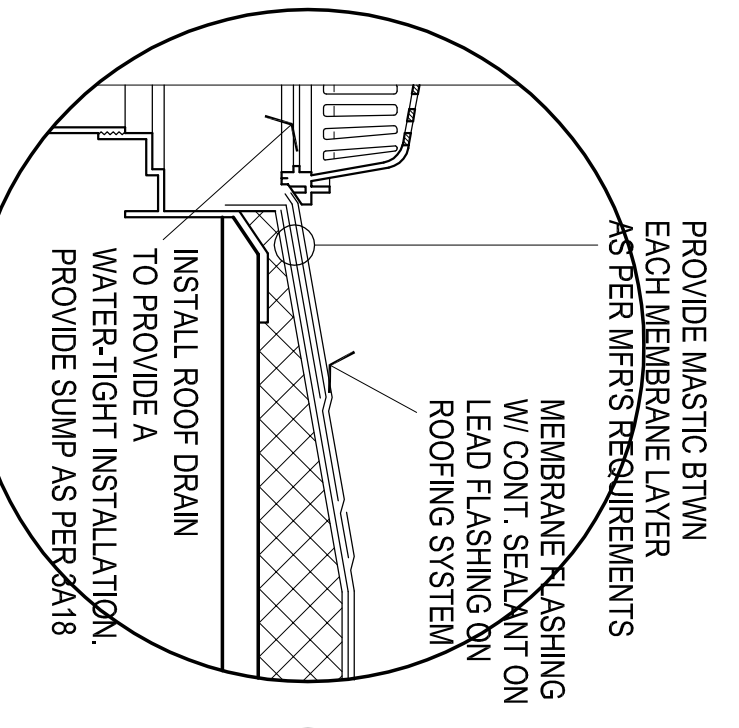
□



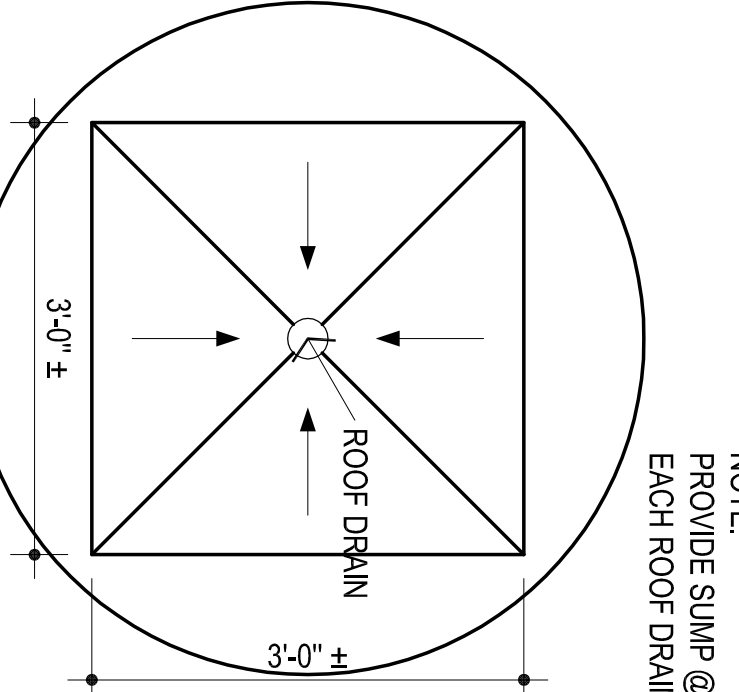
**1** ROOF PLAN  
1/8" = 1'-0"

**NOTES:**

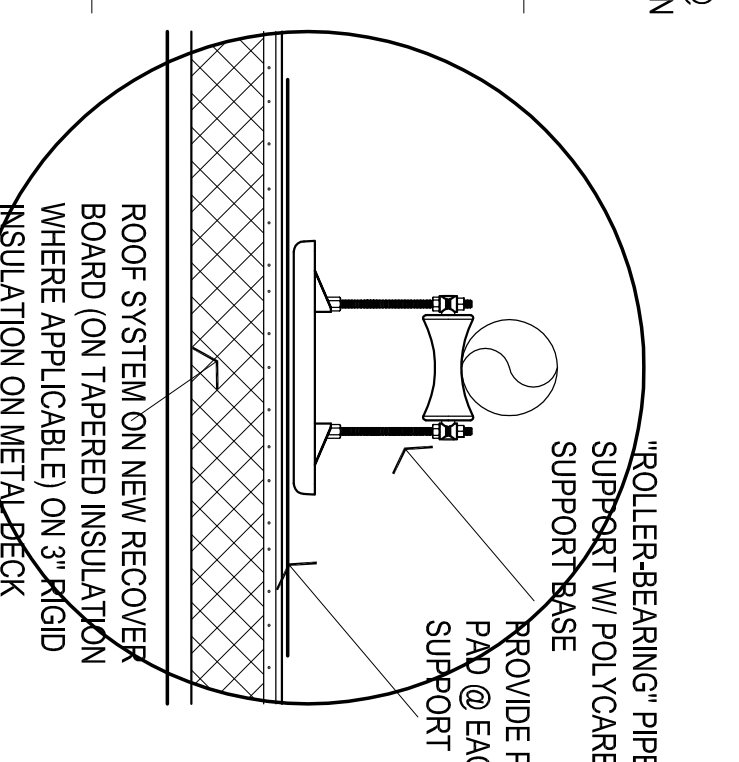
1. RE: MECH & ELEC. FOR ADDITIONAL ROOF MOUNTED ITEMS. CONTRACTOR TO COORDINATE ALL ROOF MOUNTED ITEMS & PENETRATIONS W/ APPLICABLE TRADES. PROVIDE "CRICKETS" AT HIGH SIDE OF ALL CURBS.
2. PROVIDE RELIEF SCUPPER (R.S.) AT ALL ROOF DRAIN (RD) LOCATIONS. TYP. - RE: 2, 3 & 5A105
3. \_\_\_\_\_ ROOF MOUNTED GAS LINE- REFER 4A105 FOR SUPPORT PAINT ALL GAS LINES "SAFETY" YELLOW COORDINATE W/ ARCHITECT
4. \_\_\_\_\_ INDICATES WALKWAY PAD LOCATIONS - CUT PADS INTO 5'-0" MAX LENGTHS & PLACE 2" APART TO COVER AREAS INDICATED.
5. CONTRACTOR TO COORDINATE ROOF VENT PENETRATIONS W/ ARCHITECT.



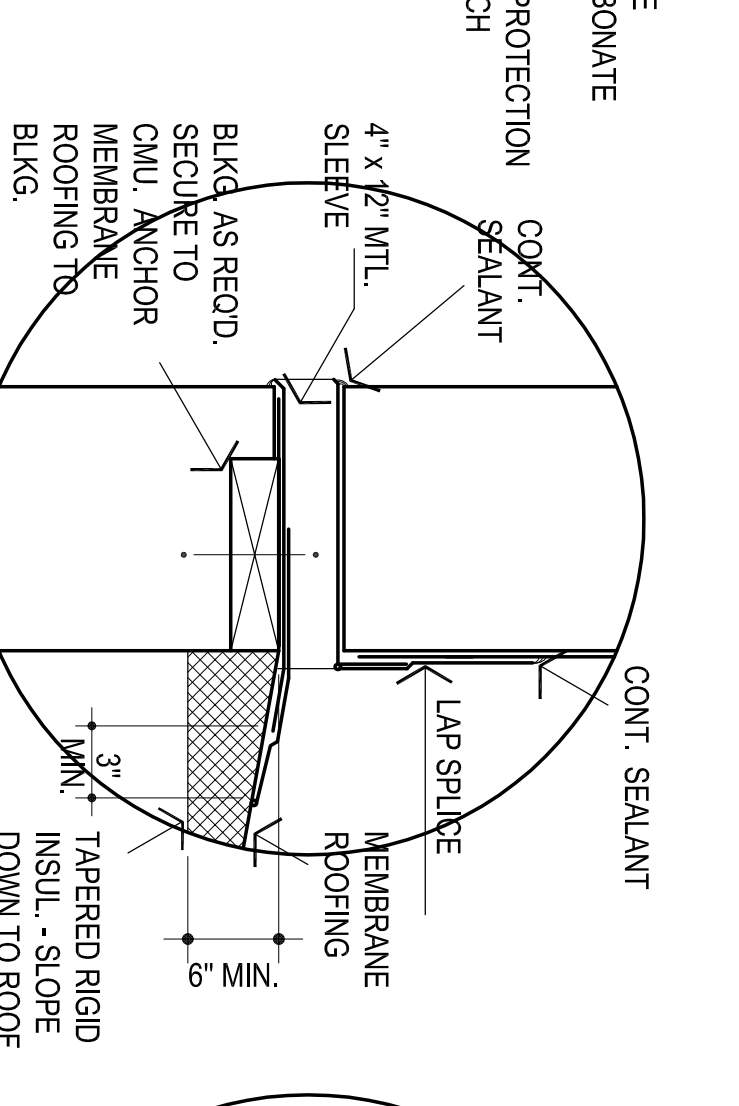
**2** ROOF DRAIN  
NO SCALE



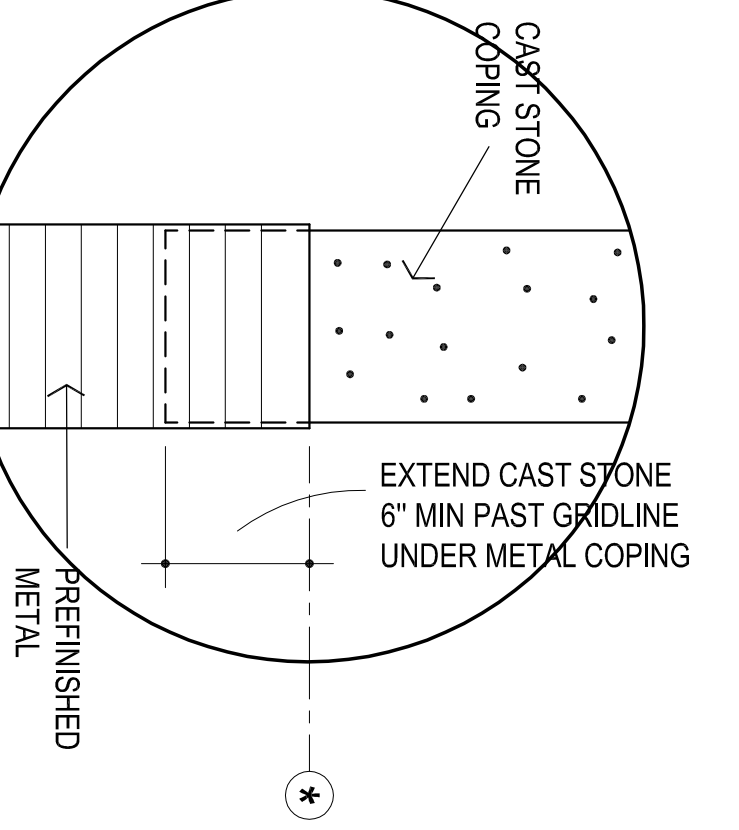
**3** ROOF DRAIN SUMP  
NO SCALE



**4** ADJUSTABLE PIPE SUPPORTS - FRONT VIEW  
NO SCALE



**5** RELIEF SCUPPER  
NOT TO SCALE



**6**

**AGP**  
the Abla Griffin  
Partnership L.L.C.  
201 N. BROADWAY  
SUITE 210  
MOORE, OK. 73160  
405.735.3477  
AGP@theAGP.net  
www.theAGP.net

KFC ENGINEERING  
STRUCTURAL  
SALAS O'BRIEN  
MECHANICAL ELECTRICAL

STATE OF OKLAHOMA  
MICHAEL L. ABLA  
2839  
REGISTERED PROFESSIONAL ARCHITECT  
4/25/22

CG  
designed by  
MA  
checked by  
APRIL 2022  
0488  
revisions  
1 ADDENDUM #1  
2 CB-2

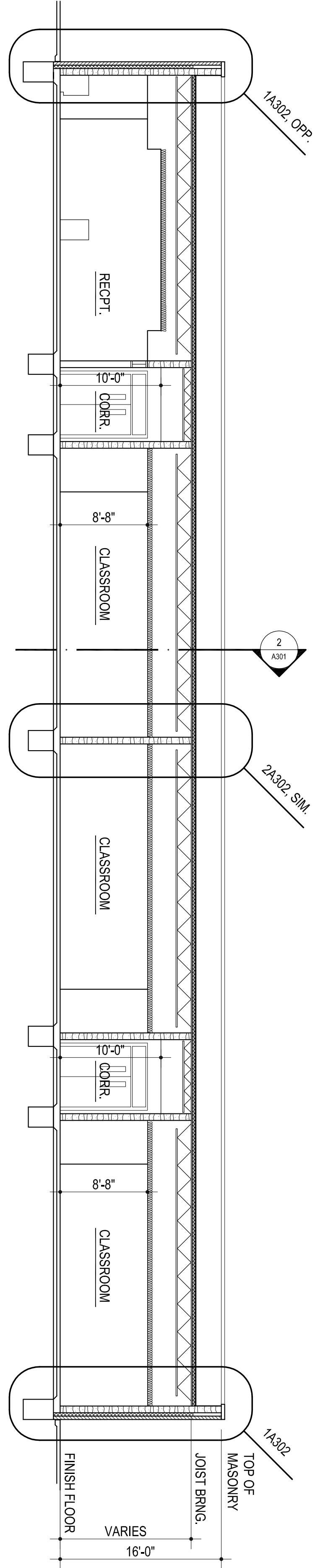
MOORE PUBLIC SCHOOLS  
BOARD OF EDUCATION  
MOORE, OKLAHOMA

MOORE Public Schools  
LEARNING FOR LIFE

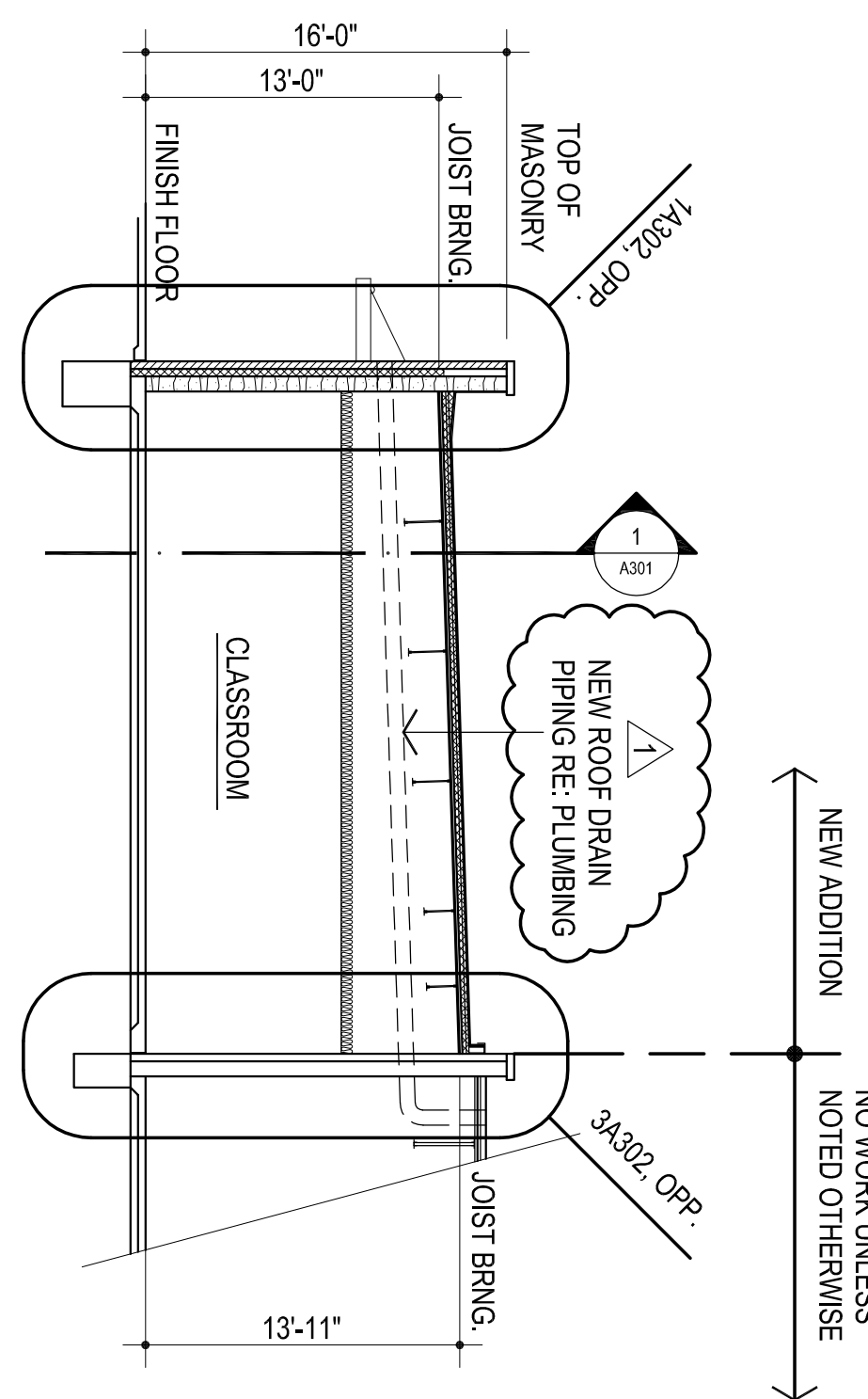
NEW 2022 CLASSROOM  
ADDITION -  
SOUTH LAKE  
ELEMENTARY SCHOOL

Sheet No: **A104**

OWNERSHIP USE OF DOCUMENTS:  
AGP EXPRESSLY RESERVES ITS  
COPYRIGHT AND OTHER PROPERTY  
RIGHTS OF ALL PLANS AND DRAWINGS  
DESIGNED AND/OR PRODUCED. PLANS  
REPRODUCED IN ANY FORM OR MANNER  
WITHOUT THE EXPRESSED WRITTEN  
CONSENT OF AGP.



**1**  
BUILDING SECTION  
1/8" = 1'-0"



**2**  
BUILDING SECTION  
1/8" = 1'-0"

**CONSTRUCTION BULLETIN # 2**

Client: Abla Griffin Partnership  
 Project Name: South Lake Elementary Classroom Addition  
 Project Number: 2022-01376-00

November 14, 2022

Requested by:  Owner  
 Contractor:  
 Salas O'Brien:



To: Mike Abla, Clay Griffin, AGP

This Construction Bulletin is issued to:

- Offer additional information for clarification or supplemental drawings for layout assistance.
- Request cost and time impact to initiate a change to the Contract Documents. Owner approval is required, do not commence with revisions unless directed in writing. Avoid Work in areas that may be affected by proposed change until approved or rejected. Once approved, forward Change Order documentation as required by the Contract Documents.
- Direct a required change in the Contract Documents. Proceed with change(s) as indicated. Forward Change Order documentation as required by the Contract Documents.
- Response to RFI \_\_\_\_\_.

Item No.	Description	Attachment
1	Refer to drawings for changes shown in clouds and deltas.	T201, T604
2	Refer to drawings for changes shown in clouds and deltas.	P111, P201

**END OF CB-02**





**GENERAL NOTES**

1. FIRE ALARM: RELOCATE EXISTING FIREPULLS TO NEW EXTERIOR DOORS. CONNECT NEW FIRE ALARM DEVICES TO EXISTING SILENT KNIGHT FIRE ALARM SYSTEM. SUPPLY ALL NAC PANELS, POWER SUPPLIES, ETC., NEEDED TO MAKE A COMPLETE AND CODE COMPLIANT SYSTEM.
2. SECURITY SYSTEM: CONNECT NEW SECURITY DEVICES TO EXISTING ZONE EXPANDER AND POWER SUPPLY.
3. INTERCOM: CONNECT NEW INTERCOM DEVICES TO EXISTING TELECOR INTERCOM SYSTEM. INTERCOM WIRE SHALL BE SHIELDED.
4. CLOCK: CONNECT NEW CLOCK DEVICES TO EXISTING TELECOR CLOCK SYSTEM.
5. DATA: CONNECT NEW DATA DROPS TO EXISTING IDF.
6. CAMERA: CONNECT NEW CAMERA DROPS TO EXISTING IDF. EXISTING CAMERA SYSTEM IS AVIGILON. MATCH PER SPECIFICATIONS.
7. ACCESS CONTROL: CONNECT NEW ACCESS CONTROL DEVICES TO NEW KEYSKAN CONTROLLER. PROVIDE CONTROLLER, READERS, STRIKES, ETC. TO MAKE A COMPLETE AND OPERABLE SYSTEM.
8. AIPHONE: PROVIDE AND INSTALL AN IX SERIES AIPHONE SYSTEM. DOOR STATION: IX-EA, MASTER STATION: IX-MV7-HB.

**KEYED NOTES**

- 1 RELOCATE EXISTING FIRE PULL.
- 2 RELOCATING EXISTING PAGING HORN
- 3 REMOVE EXISTING CAMERA AND RETURN TO MPS TECHNOLOGY. JACK PHILIP 405-473-5225
- 4 CONTRACTOR TO PROVIDE AND INSTALL A 'HOLD UP' BUTTON UNDER COUNTER AND CONNECT TO EXISTING SECURITY ALARM SYSTEM.
- 5 COORDINATE WITH OWNER ON NUMBER OF BUTTONS WHICH DOORS ARE TO BE RELEASED.
- 6 INDICATED DOOR SHALL BE ON A SCHEDULE. DOOR TO BE SCHEDULED OPEN DURING REGULAR SCHOOL HOURS AND LOCKED AFTER HOURS. ADDITIONALLY, PROVIDE FUNCTIONALITY TO MANUALLY LOCK DOOR IN CASE OF EMERGENCY.

3

NY  
drawn by

NY  
checked by

APRIL 2022  
date

3 11/14/22 CB02  
revisions

2 10/19/22 CB01  
6/07/22 AD02

MOORE PUBLIC SCHOOLS  
BOARD OF EDUCATION  
MOORE, OKLAHOMA



NEW CLASSROOM  
ADDITION -  
SOUTH LAKE  
ELEMENTARY SCHOOL

sheet no:

**T201**

OWNERSHIP USE OF DOCUMENTS:

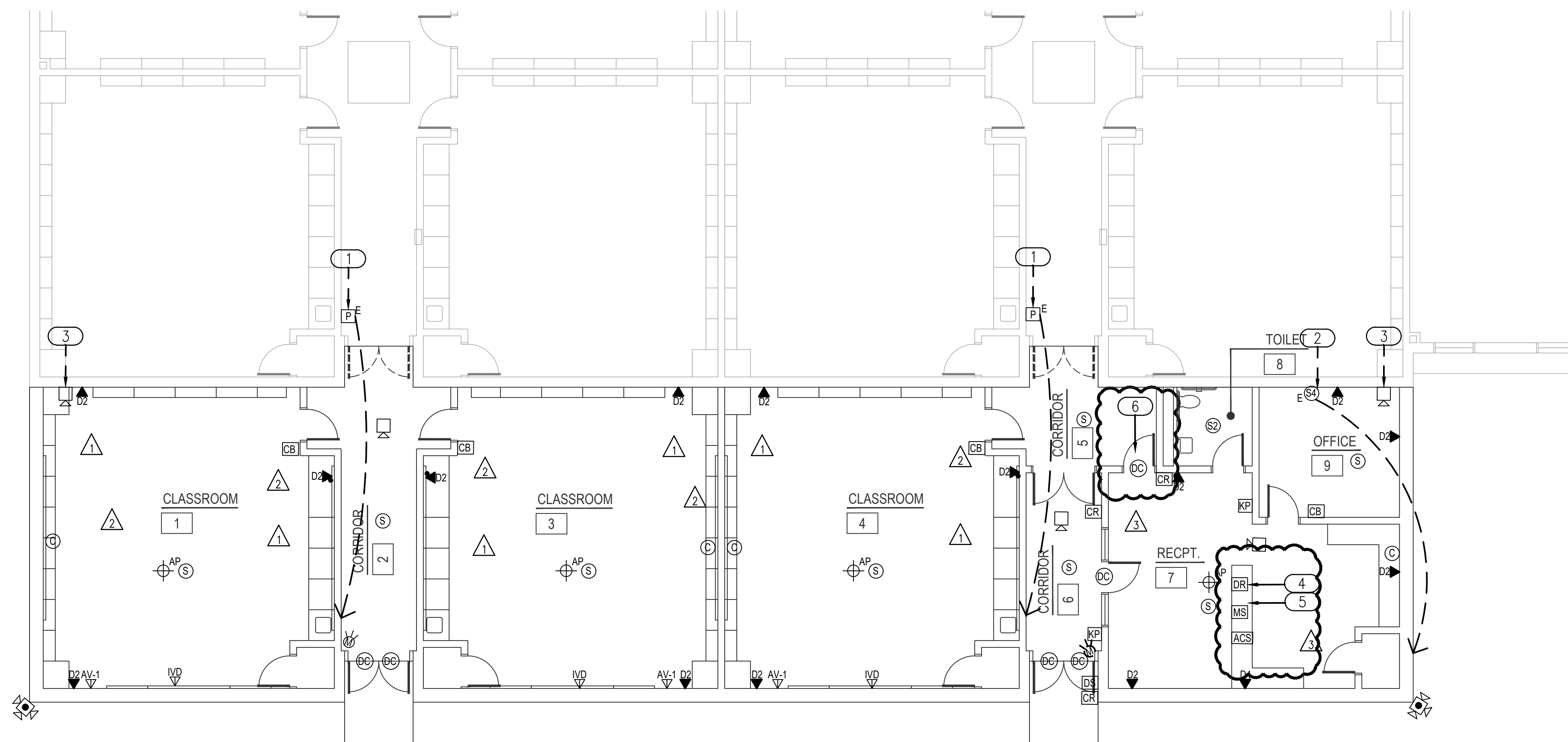
AGP EXPRESSLY RESERVES ITS COPYRIGHT AND OTHER PROPERTY RIGHTS OF ALL PLANS AND DRAWINGS DESIGNED AND/OR PRODUCED. PLANS AND DRAWINGS ARE NOT TO BE REPRODUCED IN ANY FORM OR MANNER WITHOUT THE EXPRESSED WRITTEN CONSENT OF AGP.



2600 Van Buren St., Suite 2635  
Norman, Oklahoma 73072  
P: 405.364.9926 | CA#: 7058 Expiration Date: 6/30/2023

Salas O'Brien Project No.: 2022-01376-00

**1 TECHNOLOGY FLOOR PLAN**  
1/8" = 1'-0"



SYSTEMS SPECIFICATIONS

Moore Public Schools  
Video Intercom Door System Specifications

MANUFACTURE  
AVIGILON (NO SUBSTITUTIONS).

AVIGILON REQUIRED EQUIPMENT

3.0CH4VIR01-IR  
3.0 MP, H4 Video Intercom, WDR, Light Catcher, Day/Night, 1.83mm  
f/2.4, Integrated IR, Recessed Mount

H4V-AC-RELY1  
Safety Relay for H4 Video Intercom

H4V-MT-SURF1  
Surface mount adapter for H4 Video Intercom

ACC7-ENT  
ACC 7 Enterprise camera channel license

INSTALLATION

- Video Intercom system requires a Cat 6 network drop ran to the nearest IDF
- Video Intercom system requires an 18 gauge 4 conductor cable ran between the video intercom station and the entry door Keyscan controller unit. **MPS to have final determination of camera location and field of view (Call Jack Phillips for final location and view phone 473-5225)**
- Each installed Video Intercom System requires a license.
- All network drops shall be connected with patch cords to a switch at each rack location.
- No Substitutions.

Horizontal Cabling

Requirements

- See MPS Structured Cabling Specifications for camera network cabling installation, labelling and testing requirements.

Warranty

- Contractor shall provide a 1 year parts and labor warranty against defective workmanship and/or system component failure.
- Contractor shall execute a Lifetime Applications Assurance Warranty for parts and labor to support stated applications from the connectivity Manufacturer.

End of Section



AGP

the Abla Griffin  
Partnership L.L.C.

201 N. BROADWAY  
SUITE 210  
MOORE, OK. 73160  
405.735.3477  
AGP@theAGP.net  
www.theAGP.net

KFC ENGINEERING  
STRUCTURAL

SALAS O'BRIEN  
MECHANICAL / ELECTRICAL

NY

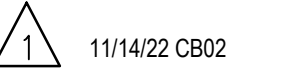
drawn by

NY

checked by

APRIL 2022

date



11/14/22 CB02

revisions

MOORE PUBLIC SCHOOLS  
BOARD OF EDUCATION  
MOORE, OKLAHOMA

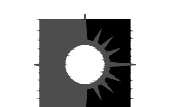


MOORE Public Schools  
LEARNING FOR LIFE

NEW CLASSROOM  
ADDITION -  
SOUTH LAKE  
ELEMENTARY SCHOOL

sheet no:

T604



SALASO'BRIEN  
| expect a difference |

2600 Van Buren St., Suite 2635  
Norman, Oklahoma 73072  
P: 405.364.9926 | CA#: 7058 Expiration Date: 6/30/2023

Salas O'Brien Project No.: 2022-01376-00

OWNERSHIP USE OF DOCUMENTS:  
AGP EXPRESSLY RESERVES ITS  
COPYRIGHT AND OTHER PROPERTY  
RIGHTS OF ALL PLANS AND DRAWINGS  
DESIGNED AND/OR PRODUCED. PLANS  
AND DRAWINGS ARE NOT TO BE  
REPRODUCED IN ANY FORM OR MANNER  
WITHOUT THE EXPRESSED WRITTEN  
CONSENT OF AGP.





KPP  
drawn by  
DG  
checked by  
APRIL 2022  
date  
11/14/22 CB02  
revisions

MOORE PUBLIC SCHOOLS  
BOARD OF EDUCATION  
MOORE, OKLAHOMA



NEW CLASSROOM  
ADDITION -  
SOUTH LAKE  
ELEMENTARY SCHOOL

sheet no:

## P111

OWNERSHIP USE OF DOCUMENTS:

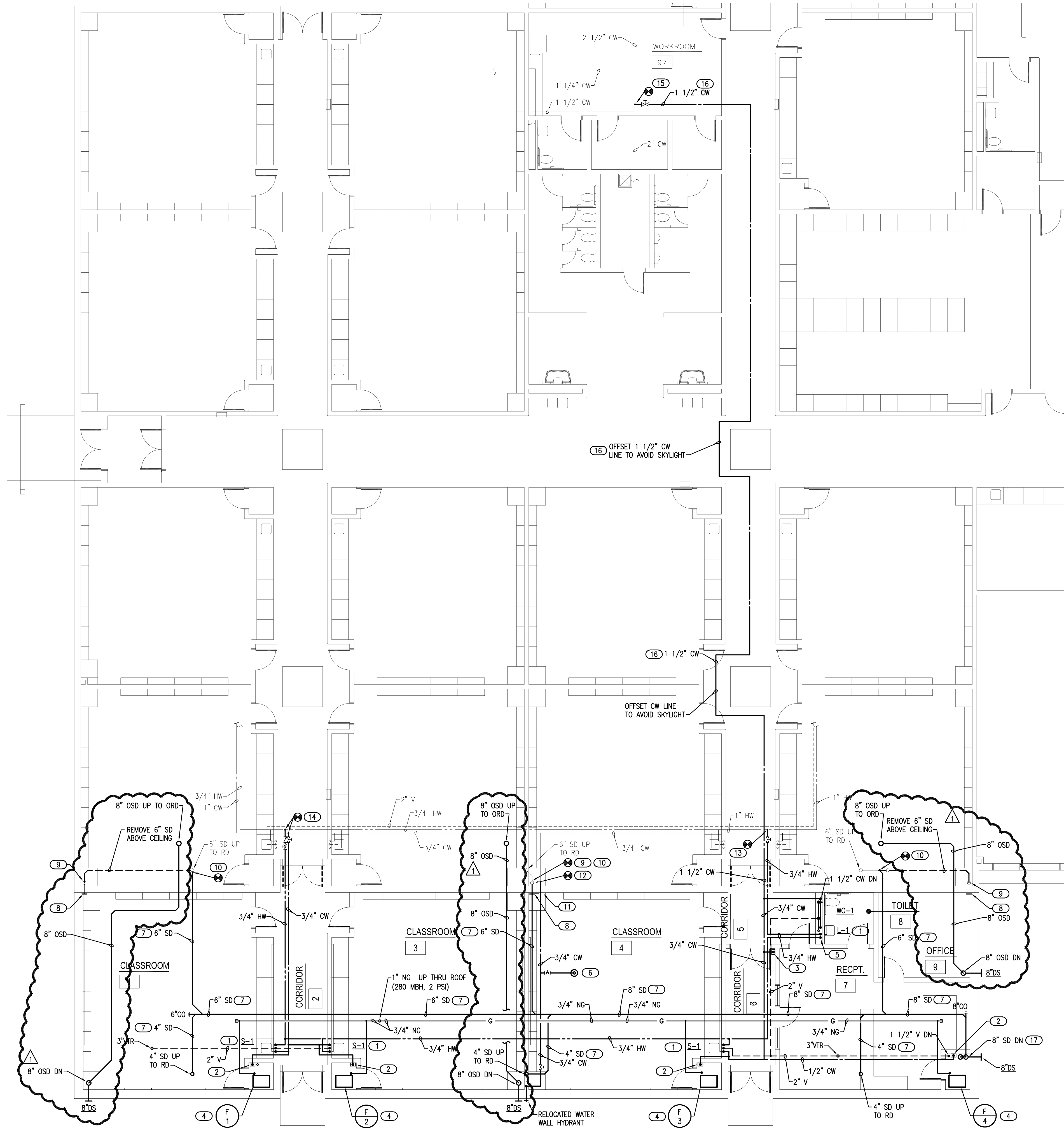
AGP EXPRESSLY RESERVES ITS  
COPYRIGHT AND OTHER PROPERTY  
RIGHTS OF ALL PLANS AND DRAWINGS  
DESIGNED AND/OR PRODUCED. PLANS  
AND DRAWINGS ARE NOT TO BE  
REPRODUCED IN ANY FORM OR MANNER  
WITHOUT THE EXPRESSED WRITTEN  
CONSENT OF AGP.

### GENERAL NOTES

- COORDINATE WORK WITH ALL OTHER TRADES ON SITE.
- PROVIDE WATER HAMMER ARRESTORS (HA) ON WATER LINES TO FLUSH VALVES, SENSOR FAUCETS AND QUICK CLOSING VALVES. LOCATE UNITS IN ACCESSIBLE LOCATIONS.
- SINK AND LAVATORY WATER SUPPLY STUB OUTS SHALL BE COPPER PIPE WITH SUPPORT BRACKET FASTENED IN WALL CAVITY.
- FIRE SEAL ALL PENETRATIONS THRU RATED STRUCTURES TO MAINTAIN FIRE RATING.
- REFER TO PLUMBING FIXTURE SCHEDULE ON SHEET P601 FOR FIXTURE ROUGH-IN PIPE SIZES.
- PROVIDE ACCESS PANELS FOR ALL VALVES/DEVICES ABOVE HARD CEILINGS AND BEHIND WALLS.
- ALL GAS PIPE SHALL COMPLY WITH IFGC. BRANCH LINES SHALL TAP OFF TOP OF GAS MAINS AND INSTALL SHUT-OFF VALVE ON BRANCH LINE.
- TRAP PRIMER LINES SHALL BE COPPER TYPE "K" OR PEX-a TUBING WITH CONTINUOUS SLOPE TOWARDS DRAIN CONNECTION.
- COORDINATE HEIGHT OF EXTERIOR FREEZELESS WALL HYDRANT (FWH) WITH GC AND/OR ARCHITECT. SEAL FIXTURE FLANGE WATERTIGHT.

### KEYED NOTES

- INSTALL THERMOSTATIC MIXING VALVE (TMV-1) BELOW LAVATORY OR SINK. SINK SEE DETAIL 4/P501 AND LAVATORY SEE DETAIL 5/P501.
- PROVIDE 1/2" CW WITH STRAINER TO TRAP PRIMER (TP-1) IN ACCESSIBLE LOCATION IN FURNACE CLOSET. ROUTE 1/2" LINE FROM UNIT TO HUB DRAIN. COORDINATE POWER WITH EC. SEE DETAIL 1/P501.
- PROVIDE 1/2" CW WITH STRAINER TO TRAP PRIMER (TP-1) IN ACCESSIBLE LOCATION ABOVE CORRIDOR LAY-IN CEILING. ROUTE 1/2" LINE FROM UNIT TO FLOOR DRAIN IN TOILET ROOM. SEE DETAIL 1/P501.
- ROUTE 1/2" NATURAL GAS (2 PSI) LINE TO FURNACE. PROVIDE BALL VALVE, DRIP LEG, PRESSURE REGULATOR (2 PSI TO 7"W.C.) AND FINAL UNIT CONNECTION. COORDINATE CONNECTION WITH MC. SEE DETAIL 6/P501.
- ROUTE 3/4" HW DOWN IN CHASE TO LAVATORY. PROVIDE 1/2" HW TO LAVATORY AND ROUTE 3/4" HW BACK UP TO ABOVE CEILING TO CONTINUE TO CLASSROOM SINKS. SEE DETAIL 5/P501.
- PROVIDE 3/4" CW WITH BALL VALVE ABOVE LAY-IN CEILING FOR CONNECTION TO FREEZELESS ROOF HYDRANT.
- INSULATED STORM DRAIN WITH SLOPE AT 1/8" PER FOOT.
- REMOVE EXPOSED STORM DRAIN PIPE, ELBOW AND WALL FLANGE. CAP PIPE.
- VERTICAL STORM DRAIN TO REMAIN IN PLACE AND CAP END ABOVE CEILING. REMOVE STORM DRAIN ABOVE CEILING AS REQUIRED FOR EXTENDING STORM DRAIN INTO NEW ADDITION.
- CONNECT NEW 6" STORM DRAIN TO EXISTING STORM DRAIN ABOVE CEILING. FIELD VERIFY CONNECTION POINT AS HIGH AS POSSIBLE FOR EXTENDING INTO NEW ADDITION.
- REMOVE AND RELOCATE FREEZELESS WALL HYDRANT. CAP CW LINE AT REMOVED HYDRANT.
- CAP VERTICAL CW LINE SERVING HYDRANT ABOVE CEILING AND EXTEND 3/4" CW LINE INTO NEW ADDITION.
- CONNECT 3/4" HW WITH BALL VALVE TO EXISTING 1" HW LINE ABOVE CEILING. FIELD VERIFY LOCATION.
- CONNECT 3/4" CW WITH BALL VALVE TO EXISTING 1" CW LINE. CONNECT 3/4" HW WITH BALL VALVE AND CHECK VALVE TO EXISTING 3/4" HW LINE.
- CONNECT 1 1/2" CW WITH BALL VALVE TO EXISTING 2 1/2" CW LINE ABOVE CEILING. FIELD VERIFY LOCATION.
- COORDINATE WITH GC FOR CEILING REMOVAL AND REPLACEMENT FOR ROUTING NEW CW LINE TO ADDITION. FIELD VERIFY ROUTING ON SITE.
- ROUTE 8" STORM DRAIN DOWN, OFFSET UNDER RETURN DUCT TO PROVIDE CLEARANCE FOR 90 DEGREE ELBOW AND EXTEND THRU EXTERIOR WALL WITH DOWNSPOUT. INSTALL BOTTOM OF PIPE AT 8" ABOVE FINISHED FLOOR. COORDINATE INSTALLATION WITH MC AND GC.



## 1 PLUMBING PLAN - ABOVE GRADE

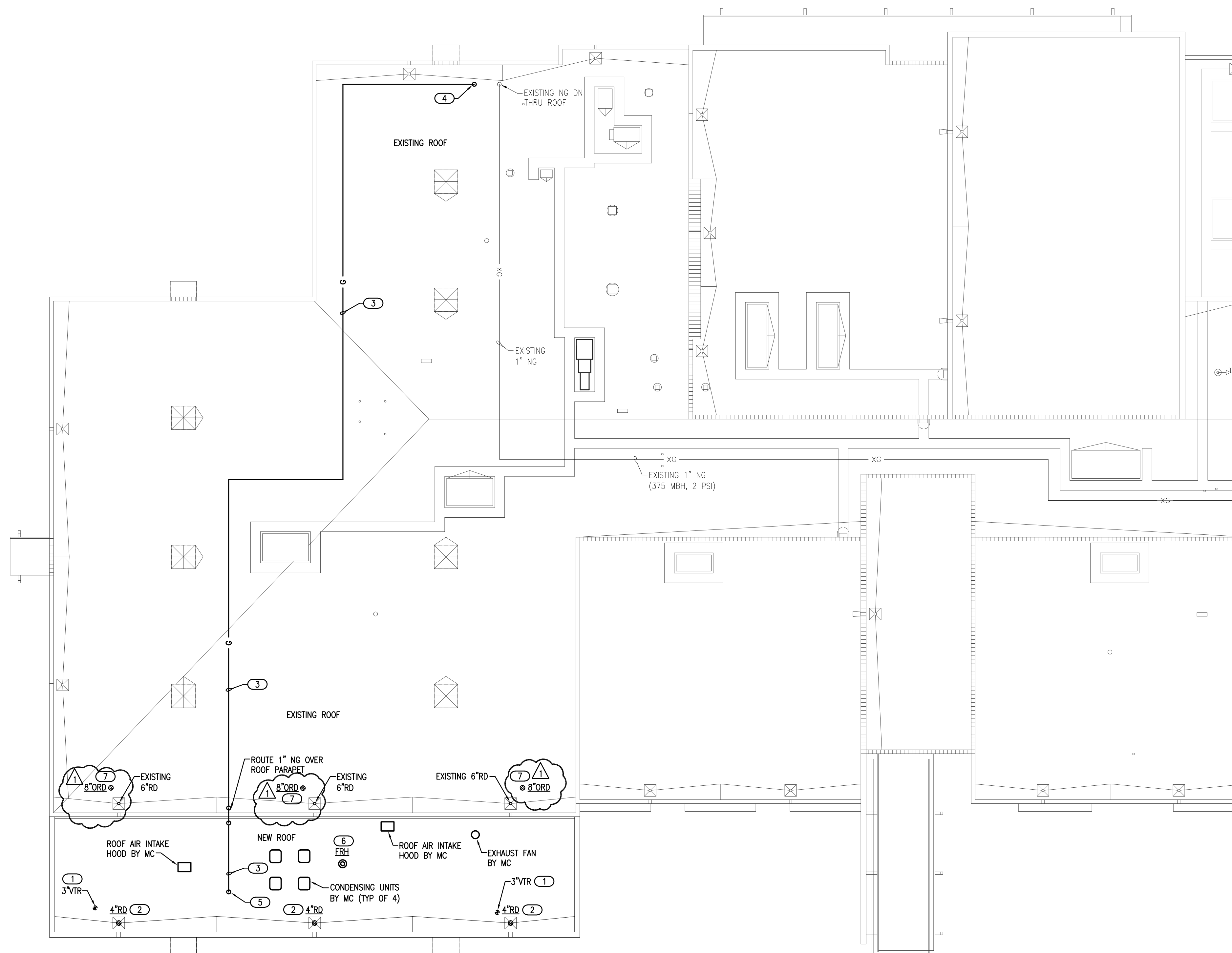
1/8" = 1'-0"



**SALAS O'BRIEN**  
I expect a difference.

2600 Van Buren St., Suite 2635  
Norman, Oklahoma 73072  
P: 405.364.9926 | CA#:7058 Expiration Date: 6/30/2023

Salas O'Brien Project No.: 2022-01376-00



- ### GENERAL NOTES
- COORDINATE WORK WITH ALL TRADES ON SITE.
  - ALL ABOVE GRADE EXTERIOR NATURAL GAS PIPE SHALL BE CLEANED AND DEGREASED PRIOR TO BEING PRIMED THEN PAINTED YELLOW WITH WEATHER RESISTANT ZINC RICH PAINT.
  - PIPE IDENTIFICATION SHALL BE THE WORD "NATURAL GAS" IN BLACK LETTERS AT 5 FT INTERVALS USING PLASTIC PIPE MARKERS OR STENCILED PAINTED LETTERS.
  - ALL GAS PIPE SHALL COMPLY WITH IFGC. BRANCH LINES SHALL TAP OFF TOP OF GAS MAINS AND INSTALL SHUT-OFF VALVE ON BRANCH LINE.
  - MAINTAIN MINIMUM OF 10'-0" CLEAR BETWEEN EXHAUST AND INTAKE VENTS WITH MECHANICAL EQUIPMENT AND OTHER ROOF OPENINGS.

- ### KEYED NOTES
- COORDINATE INSTALLATION OF PLUMBING VENTS WITH ROOFING CONTRACTOR. INSTALL VENT A MINIMUM 10'-0" FROM ANY OPENINGS, EQUIPMENT, INTAKES OR EXHAUST VENTS.
  - COORDINATE INSTALLATION OF ROOF DRAIN WITH ROOFING CONTRACTOR.
  - ROUTE NATURAL GAS LINE (2 PSI) ON ROOF. PROVIDE MIRO INDUSTRIES MODEL 3-RAH-8 ROOF TOP SUPPORTS OR APPROVED EQUAL. INSTALL AT MAXIMUM OF 8'-0" APART ON 1" OR 3/4" NATURAL GAS PIPING. REFER TO GENERAL NOTES FOR PAINTING GAS LINE. SEE DETAIL 7/P501 FOR PIPE SUPPORT DETAIL. FIELD VERIFY ROUTING ON SITE.
  - INSTALL MANUAL SHUT-OFF VALVE IN 1" NATURAL GAS LINE (2 PSI) AND ROUTE DOWN THRU EXISTING ROOF TO MECHANICAL ROOM. PROVIDE BOOT JACK AT ROOF PENETRATION AND SEAL WATER TIGHT. COORDINATE WITH ROOFING CONTRACTOR. CONNECT 1" NG WITH BALL VALVE TO EXISTING NG MAIN LINE IN MECHANICAL ROOM. FIELD VERIFY CONNECTION POINT. LABEL LINE FOR SERVICE TO NEW ADDITION.
  - INSTALL MANUAL SHUT-OFF VALVE IN 1" NATURAL GAS LINE (2 PSI) AND ROUTE DOWN THRU NEW ROOF TO SERVE FURNACES. PROVIDE BOOT JACK AT ROOF PENETRATION AND SEAL WATER TIGHT. COORDINATE WITH ROOFING CONTRACTOR. SEE PLAN P111 FOR CONTINUATION.
  - COORDINATE INSTALLATION OF FREEZELESS ROOF HYDRANT (FRH) WITH STRUCTURAL AND ROOFING CONTRACTOR.
  - OVERFLOW ROOF DRAIN: WADE MODEL 3000-42-ADF-53-D-50 WITH 2" HIGH EXTERNAL WATER DAM AND STAINLESS STEEL MESH OVER CAST IRON DOME.



KPP  
drawn by

DG  
checked by

APRIL 2022  
date

11/14/22 CB02  
revisions

MOORE PUBLIC SCHOOLS  
BOARD OF EDUCATION  
MOORE, OKLAHOMA



NEW CLASSROOM  
ADDITION -  
SOUTH LAKE  
ELEMENTARY SCHOOL

sheet no:

## P201

## 1 PLUMBING PLAN - ROOF

1/16" = 1'-0"

