

CONSTRUCTION BULLETIN # 1

Client: Abla Griffin Partnership
 Project Name: South Lake Elementary Classroom Addition
 Project Number: 2022-01376-00

October 19, 2022

Requested by: Owner
 Contractor:
 Salas O'Brien:



To: Mike Alba, Clay Griffin, AGP

This Construction Bulletin is issued to:

- Offer additional information for clarification or supplemental drawings for layout assistance.
- Request cost and time impact to initiate a change to the Contract Documents. Owner approval is required, do not commence with revisions unless directed in writing. Avoid Work in areas that may be affected by proposed change until approved or rejected. Once approved, forward Change Order documentation as required by the Contract Documents.
- Direct a required change in the Contract Documents. Proceed with change(s) as indicated. Forward Change Order documentation as required by the Contract Documents.
- Response to RFI _____.

Item No.	Description	Attachment
1	Refer to drawings for changes shown in clouds and deltas.	T201
2	Refer to drawings for changes shown in clouds and deltas.	E201

END OF CB-01



GENERAL NOTES

1. FIRE ALARM: RELOCATE EXISTING FIREPULLS TO NEW EXTERIOR DOORS. CONNECT NEW FIRE ALARM DEVICES TO EXISTING SILENT KNIGHT FIRE ALARM SYSTEM. SUPPLY ALL NAC PANELS, POWER SUPPLIES, ETC, NEEDED TO MAKE A COMPLETE AND CODE COMPLIANT SYSTEM.
2. SECURITY SYSTEM: CONNECT NEW SECURITY DEVICES TO EXISTING ZONE EXPANDER AND POWER SUPPLY.
3. INTERCOM: CONNECT NEW INTERCOM DEVICES TO EXISTING TELECOR INTERCOM SYSTEM. INTERCOM WIRE SHALL BE SHIELDED.
4. CLOCK: CONNECT NEW CLOCK DEVICES TO EXISTING TELECOR CLOCK SYSTEM.
5. DATA: CONNECT NEW DATA DROPS TO EXISTING IDF.
6. CAMERA: CONNECT NEW CAMERA DROPS TO EXISTING IDF. EXISTING CAMERA SYSTEM IS AVIGILON. MATCH PER SPECIFICATIONS.
7. ACCESS CONTROL: CONNECT NEW ACCESS CONTROL DEVICES TO NEW KEYSKAN CONTROLLER. PROVIDE CONTROLLER, READERS, STRIKES, ETC. TO MAKE A COMPLETE AND OPERABLE SYSTEM.
8. ALPHONE: PROVIDE AND INSTALL AN IX SERIES ALPHONE SYSTEM. DOOR STATION: IX-EA, MASTER STATION: IX-MV7-HB.

KEYED NOTES

- 1 RELOCATE EXISTING FIRE PULL.
- 2 RELOCATING EXISTING PAGING HORN
- 3 REMOVE EXISTING CAMERA AND RETURN TO MPS TECHNOLOGY. JACK PHILLIP, 405-473-5225

NY
drawn by

NY
checked by

APRIL 2022
date

10/19/22 CB01
6/07/22 AD02
revisions

MOORE PUBLIC SCHOOLS
BOARD OF EDUCATION
MOORE, OKLAHOMA



NEW CLASSROOM
ADDITION -
SOUTH LAKE
ELEMENTARY SCHOOL

sheet no:

T201

1 TECHNOLOGY FLOOR PLAN

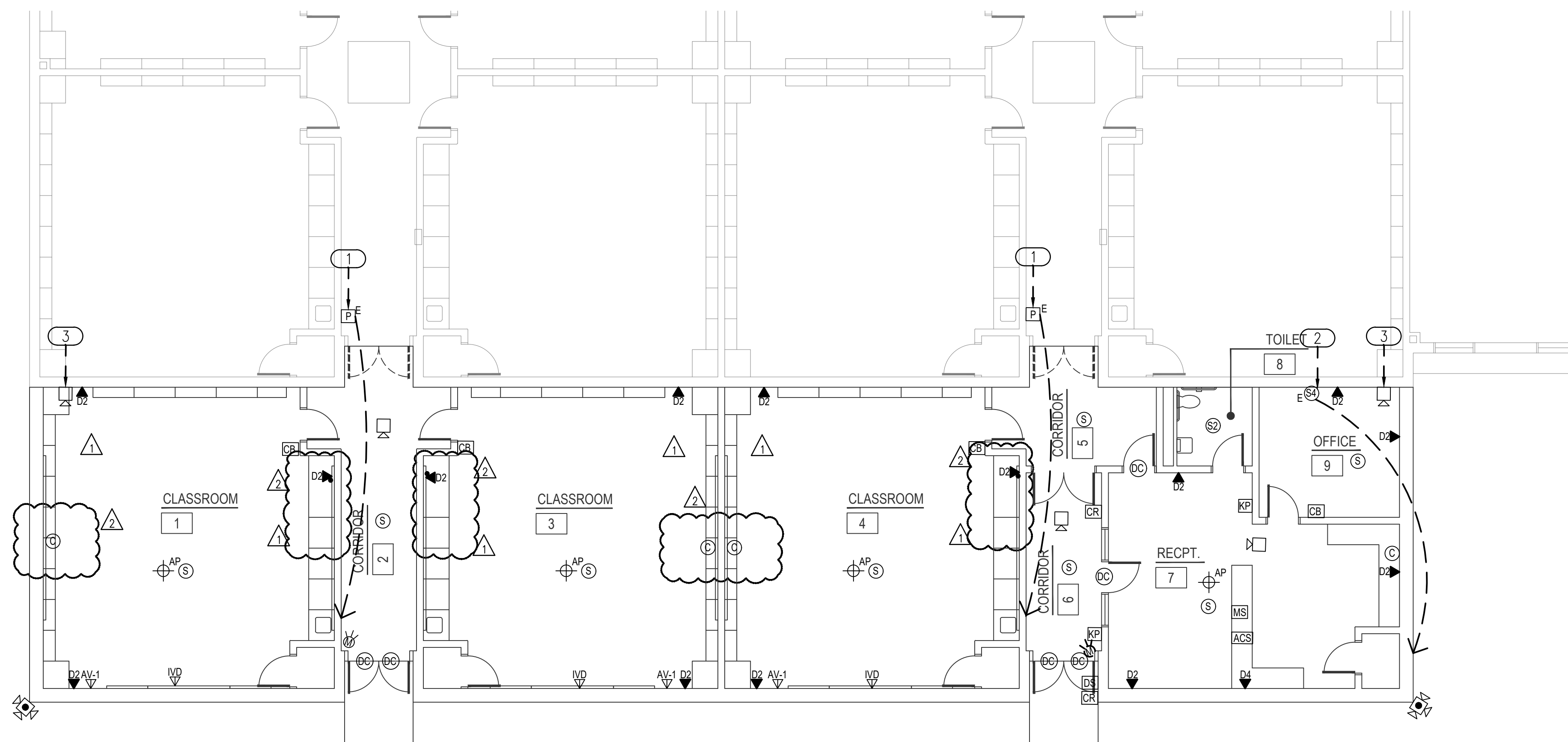
1/8" = 1'-0"



2600 Van Buren St., Suite 2635
Norman, Oklahoma 73072
P: 405.364.9926 | CA#: 7058 Expiration Date: 6/30/2023

Salas O'Brien Project No.: 2022-01376-00

OWNERSHIP USE OF DOCUMENTS:
AGP EXPRESSLY RESERVES ITS
COPYRIGHT AND OTHER PROPERTY
RIGHTS OF ALL PLANS AND DRAWINGS
DESIGNED AND/OR PRODUCED. PLANS
AND DRAWINGS ARE NOT TO BE
REPRODUCED IN ANY FORM OR MANNER
WITHOUT THE EXPRESSED WRITTEN
CONSENT OF AGP.



KFC ENGINEERING

STRUCTURAL

SALAS O'BRIEN

MECHANICAL / ELECTRICAL



BB

drawn by

TVO

checked by

APRIL 2022

date

10/19/22 CB01

revisions

MOORE PUBLIC SCHOOLS
BOARD OF EDUCATION
MOORE, OKLAHOMA



NEW CLASSROOM
ADDITION -
SOUTH LAKE
ELEMENTARY SCHOOL

sheet no:

E201

OWNERSHIP USE OF DOCUMENTS:

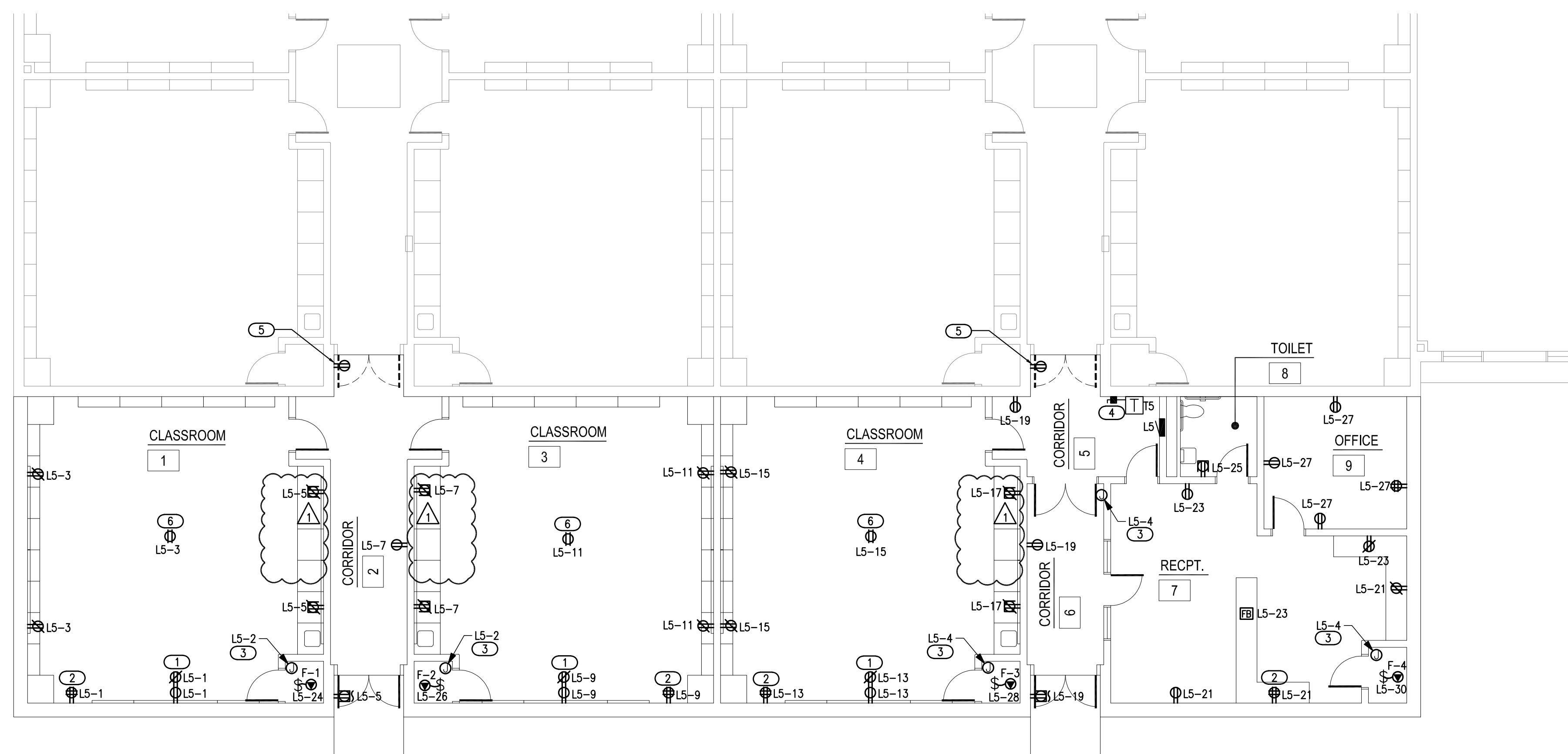
AGP EXPRESSLY RESERVES ITS
COPYRIGHT AND OTHER PROPERTY
RIGHTS OF ALL PLANS AND DRAWINGS
DESIGNED AND/OR PRODUCED. PLANS
AND DRAWINGS ARE NOT TO BE
REPRODUCED IN ANY FORM OR MANNER
WITHOUT THE EXPRESSED WRITTEN
CONSENT OF AGP.

GENERAL NOTES

- COORDINATE EXACT LOCATIONS OF DEVICES SHOWN WITH OTHER EQUIPMENT. COORDINATE EXACT LOCATIONS OF CEILING MOUNTED DEVICES WITH LIGHTS, HVAC EQUIPMENT, AND OTHER DEVICES.
- COORDINATE WITH MC AND PROVIDE ALL RELAYS, CONNECTIONS, AND ALL DEVICES NECESSARY TO INTERLOCK EXHAUST FANS, DAMPERS, ETC WITH PROPER CONTROL DEVICES.
- COORDINATE EXACT LOCATIONS OF MECHANICAL EQUIPMENT WITH MECHANICAL CONTRACTOR.
- FLOOR BOXES INDICATED ON DRAWING SHALL BE EQUAL TO LEGRAND RFB 2-GANG BOX. REFER TO DETAIL '5/E601' FOR ADDITIONAL INFORMATION.

KEYED NOTES

- RECEPTACLE FOR SMART BOARD (BY OWNER) IN A RECESSED BACK BOX. REFER TO DETAIL 'E501/6' FOR ADDITIONAL INFORMATION.
- APPROXIMATE LOCATION OF TEACHERS DESK. COORDINATE FINAL LOCATION AND REQUIREMENTS WITH OWNER/ARCHITECT PRIOR TO ROUGH-IN. REFER TO DETAIL 'E501/6' FOR ADDITIONAL INFORMATION.
- PROVIDE 120V CONNECTION FOR TRAP PRIMER. COORDINATE EXACT LOCATION AND REQUIREMENTS WITH PLUMBING CONTRACTOR PRIOR TO ROUGH IN. REFER TO DETAIL '1/P501' FOR ADDITIONAL INFORMATION.
- NEW TRANSFORMER 'TS' AND ASSOCIATED DISCONNECT SHALL BE INSTALLED ABOVE CEILING GRID, MOUNTED FROM STRUCTURE ABOVE.
- EXISTING WEATHERPROOF RECEPTACLE SHALL REMAIN. REMOVE COVER AND PROVIDE NEW DEVICE, FACEPLATE, AND ANY MATERIALS NECESSARY FOR A FLUSH MOUNTING.
- PROVIDE CEILING MOUNTED RECEPTACLE FOR FUTURE PROJECTOR CONNECTION. COORDINATE EXACT LOCATIONS AND REQUIREMENTS WITH ARCHITECT/OWNER PRIOR TO ROUGH-IN.



1 ELECTRICAL POWER PLAN
1/8" = 1'-0"



SALAS O'BRIEN
[expect a difference]

2600 Van Buren St., Suite 2635
Norman, Oklahoma 73072
P: 405.364.9926 | CA#:7058 Expiration Date: 6/30/2023

Salas O'Brien Project No.: 2022-01376-00