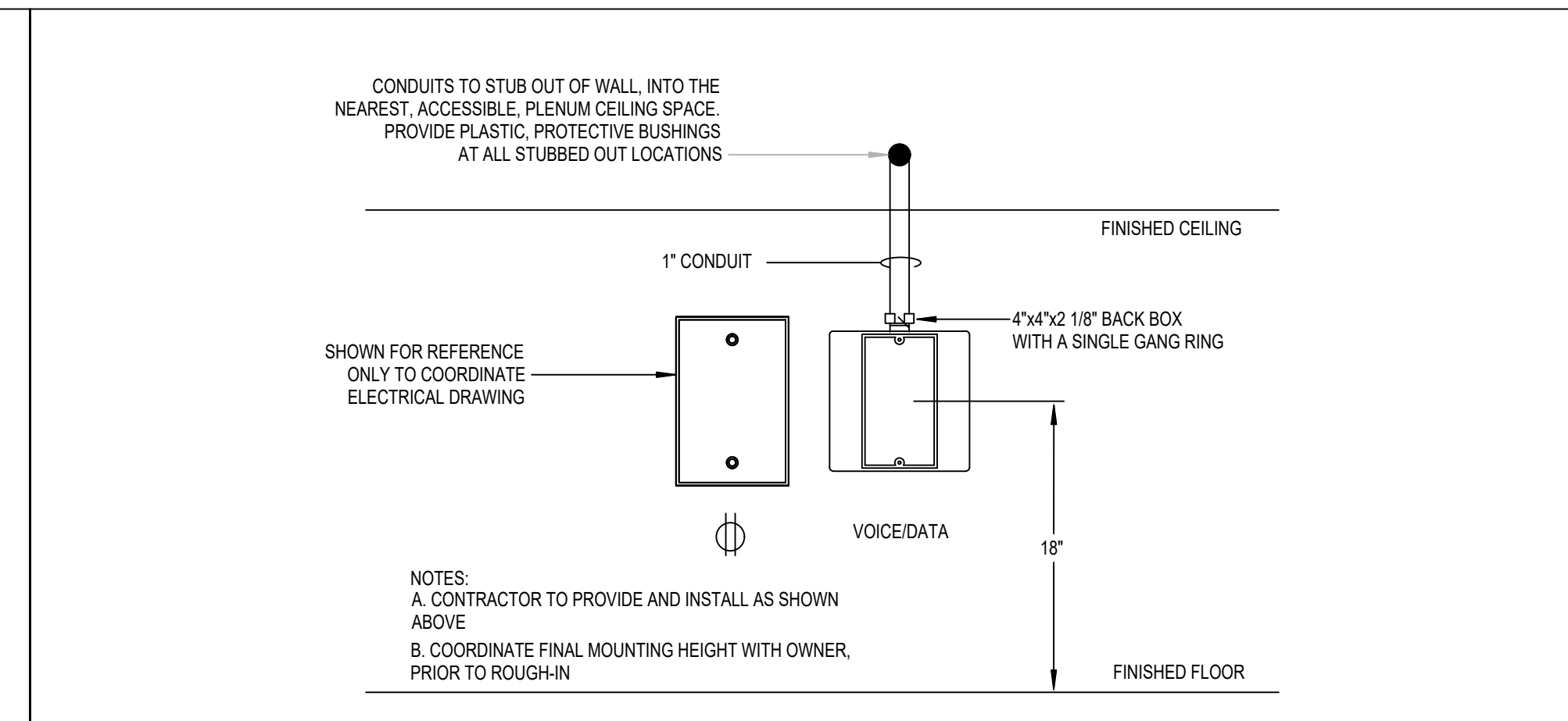
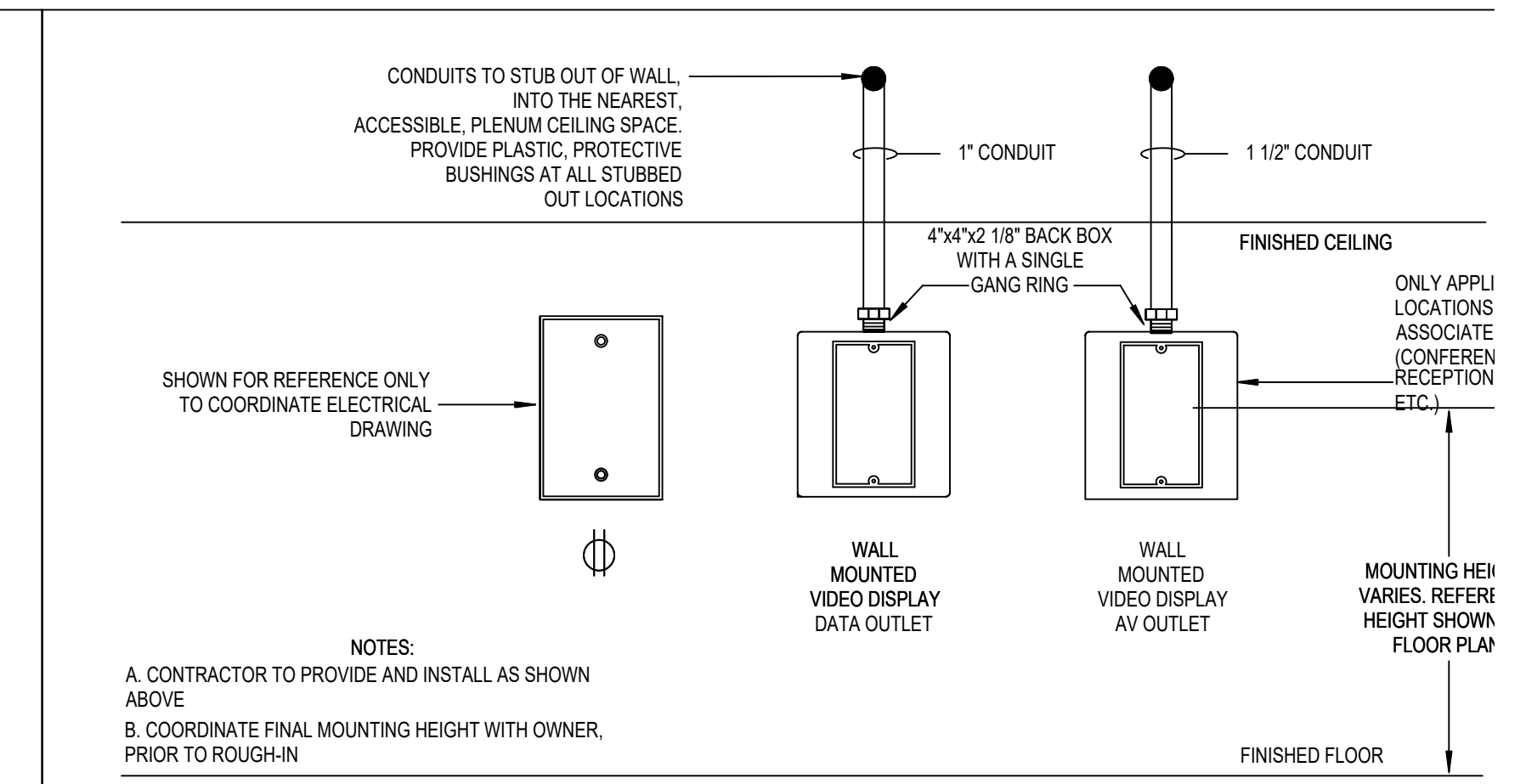


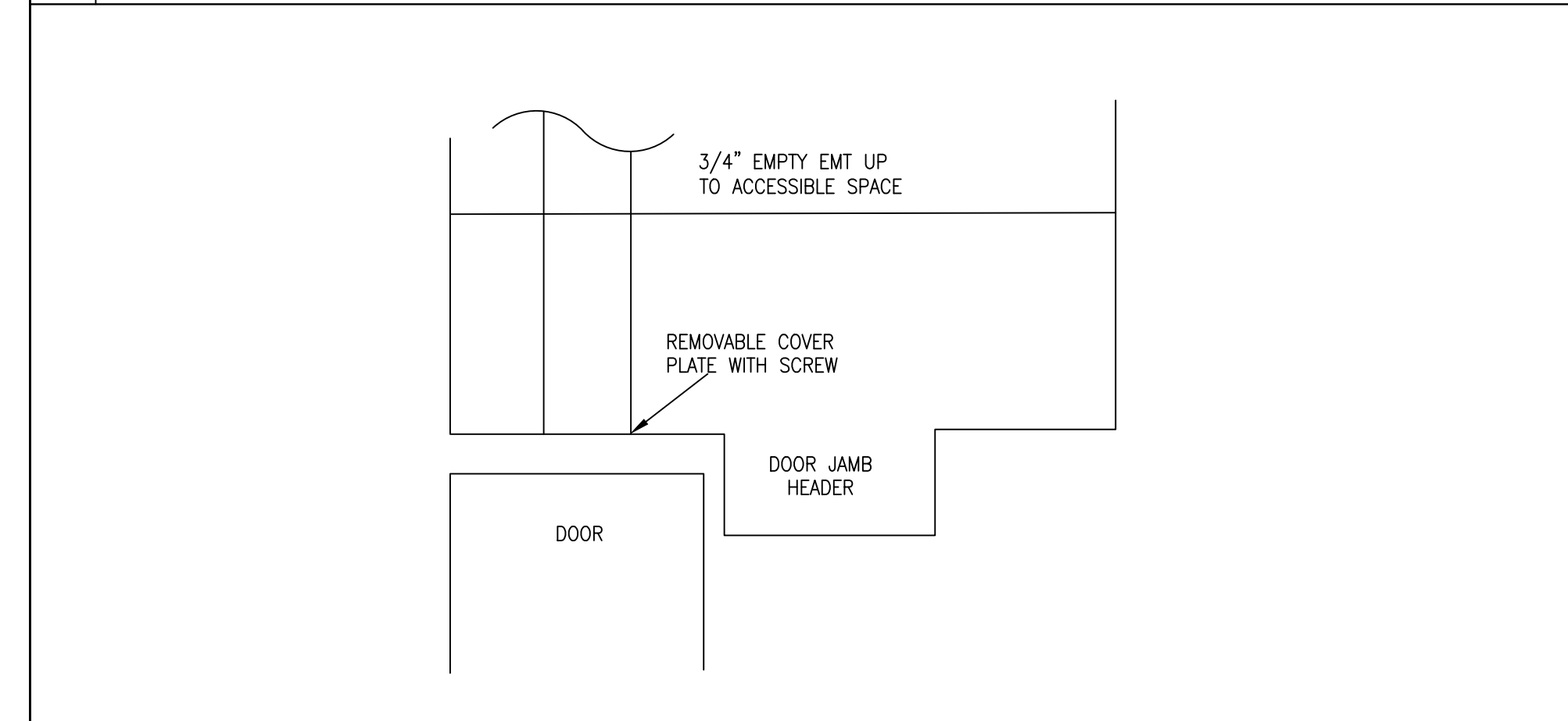
01 LOW VOLTAGE ELEVATION - IN-WALL RACEWAY NOT TO SCALE



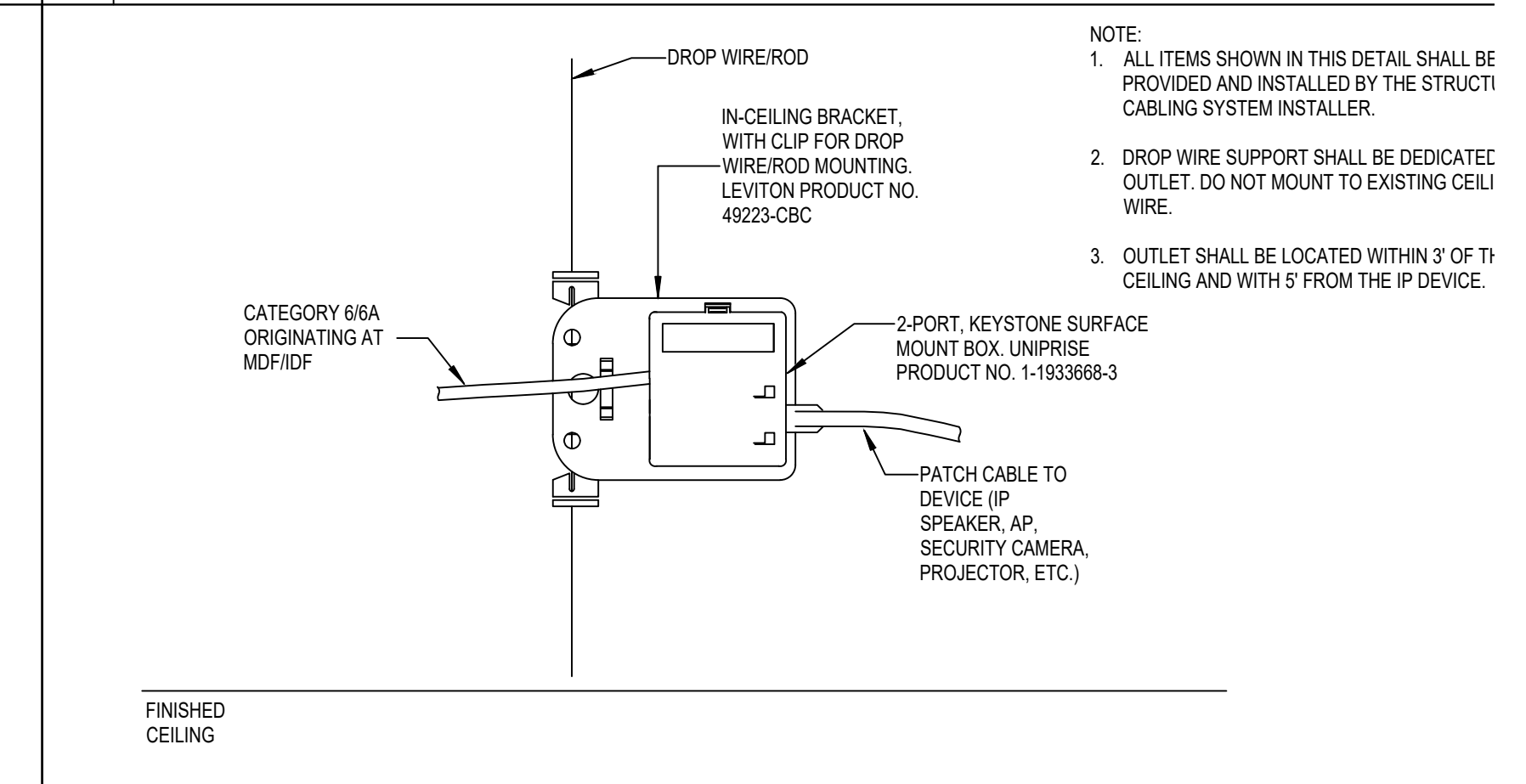
02 RACEWAY DETAIL - TYPICAL VOICE/DATA OUTLET NOT TO SCALE



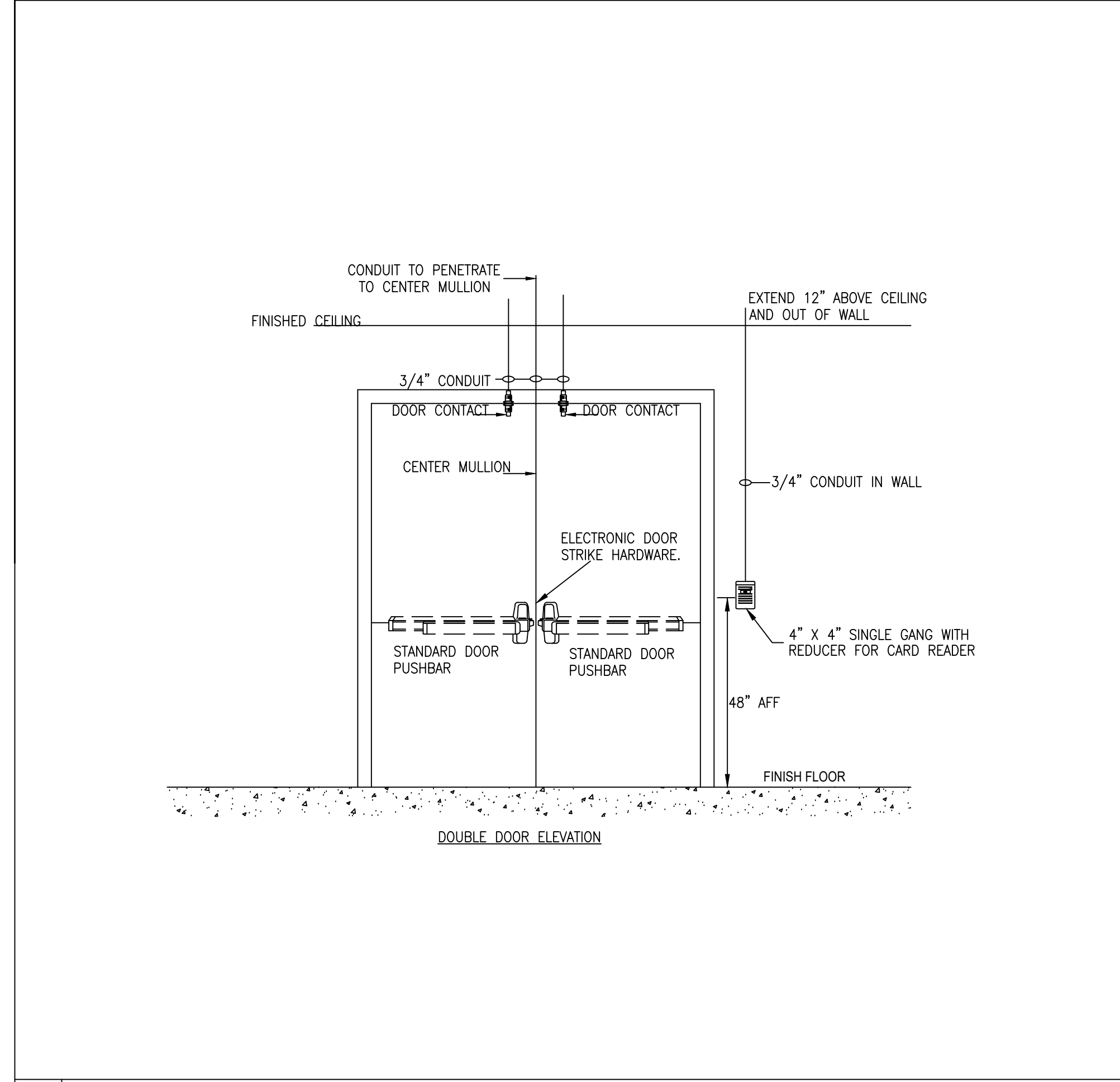
03 RACEWAY DETAIL - WALL MOUNTED DISPLAY N



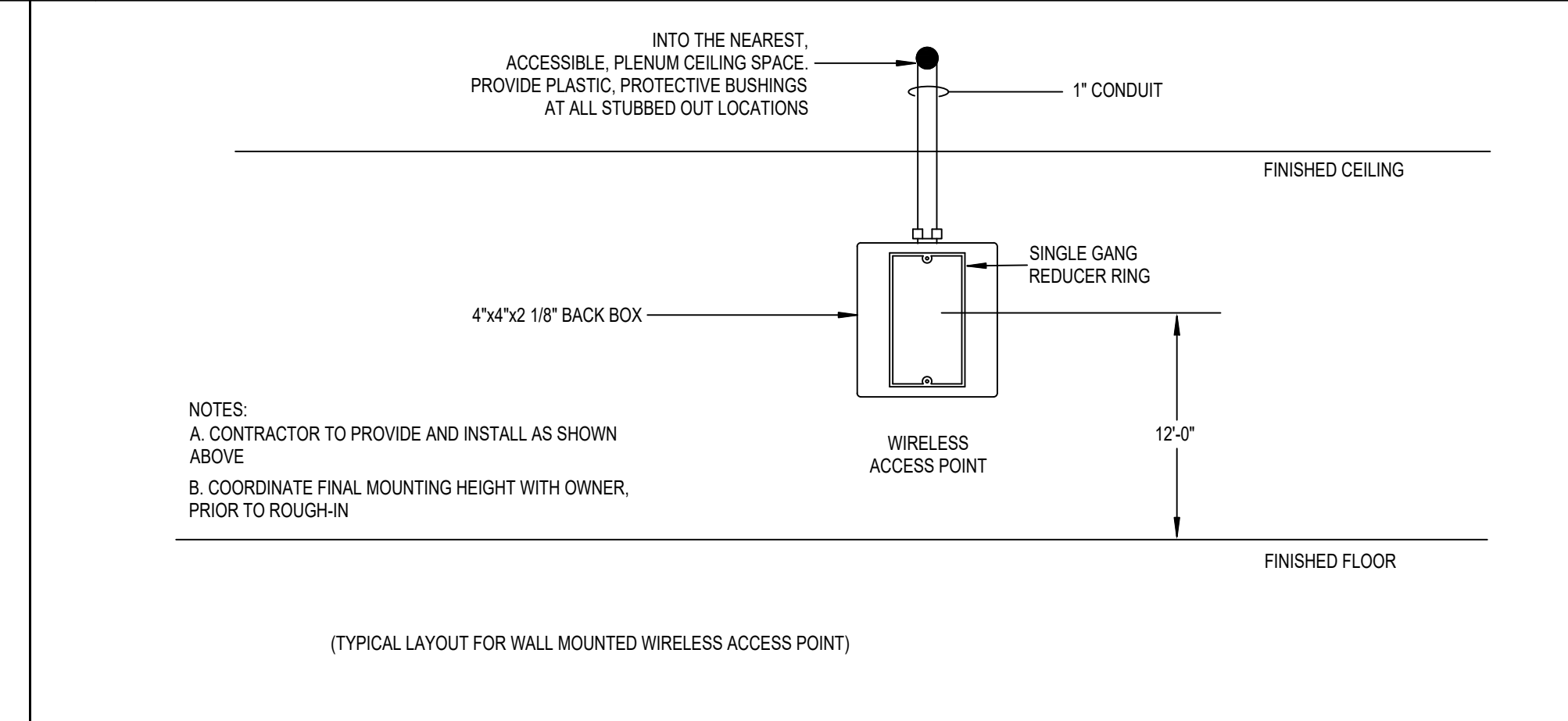
04 SECURITY CONDUIT DOOR JAMB HEADER NOT TO SCALE



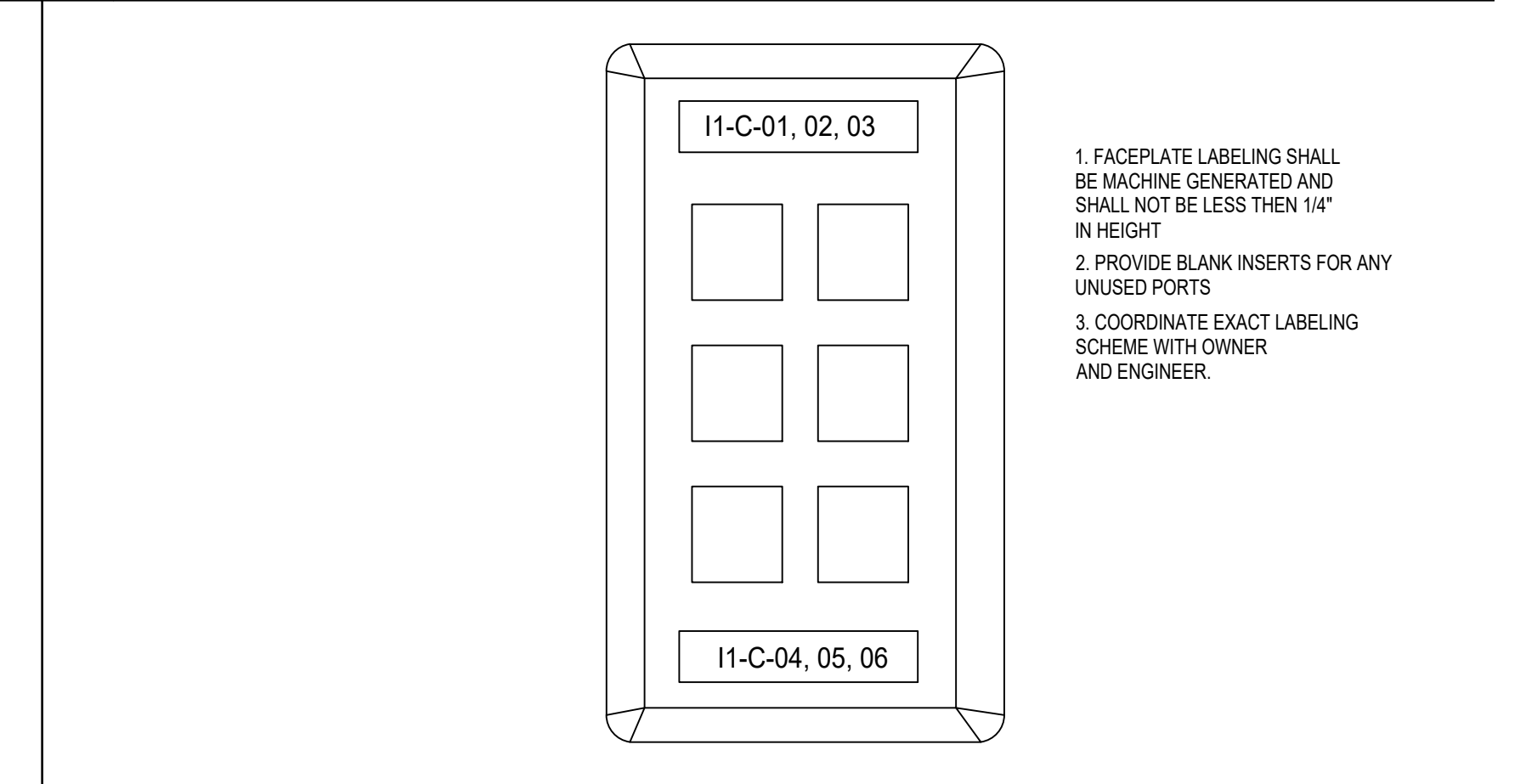
05 ABOVE CEILING STAND ALONE OUTLET N



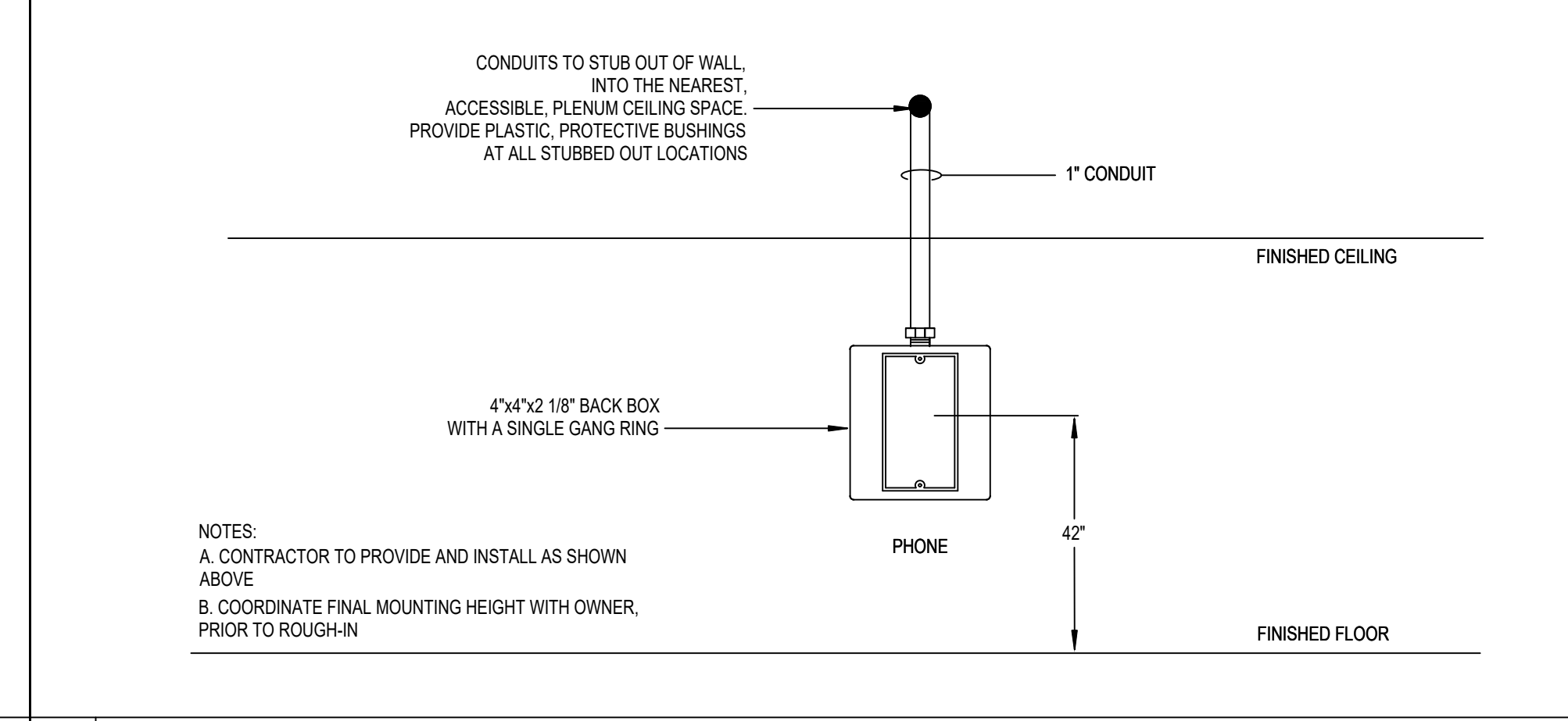
06 DOUBLE DOOR SECURITY & ACCESS CONTROL



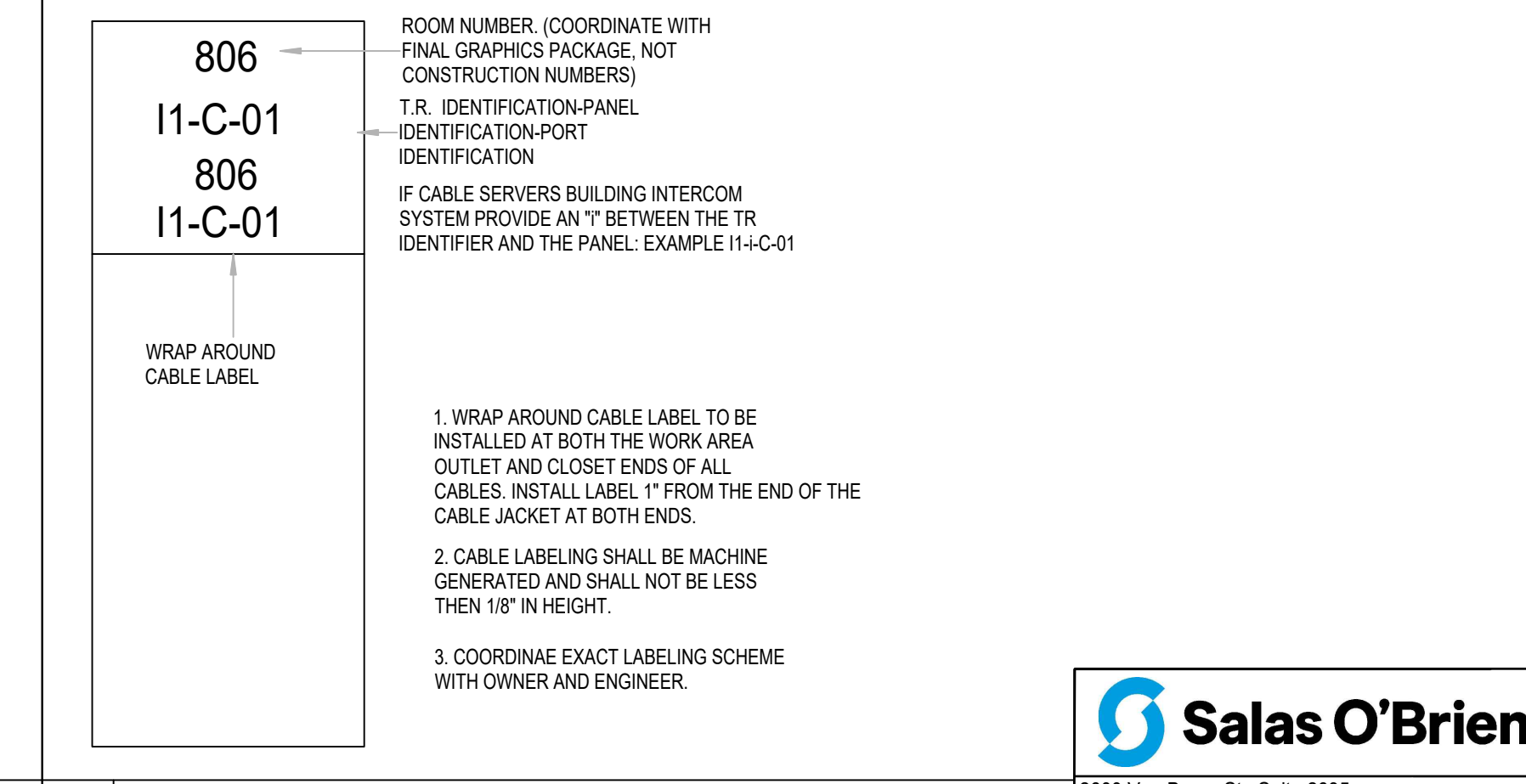
07 RACEWAY DETAIL - WALL MOUNTED WIRELESS AP NOT TO SCALE



08 FACEPLATE LABEL DETAIL N



09 RACEWAY DETAIL - WALL MOUNTED TELEPHONE NOT TO SCALE



10 CABLE LABEL DETAIL NOT TO SCALE

NY	drawn by
NY	checked by
APRIL 2023	date
	revisions

MOORE PUBLIC SCHOOLS
BOARD OF EDUCATION
MOORE, OKLAHOMA



OFFICE
ADDITION -
SOUTHGATE
ELEMENTARY SCHOOL

sheet no:
T403

OWNERSHIP USE OF DOCUMENTS:
AGP EXPRESSLY RESERVES ITS
COPYRIGHT AND OTHER PROPERTY
RIGHTS OF ALL PLANS AND DRAWINGS
DESIGNED AND/OR PRODUCED. PLANS
AND DRAWINGS ARE NOT TO BE
REPRODUCED IN ANY FORM OR MANNER
WITHOUT THE EXPRESSED WRITTEN
CONSENT OF AGP.

Salas O'Brien
2600 Van Buren St., Suite 2635
Norman, OK 73072
Salas O'Brien Registration: CA# 7058
Expiration Date: 6/30/2023
Salas O'Brien Project Number: 2023-01140-00