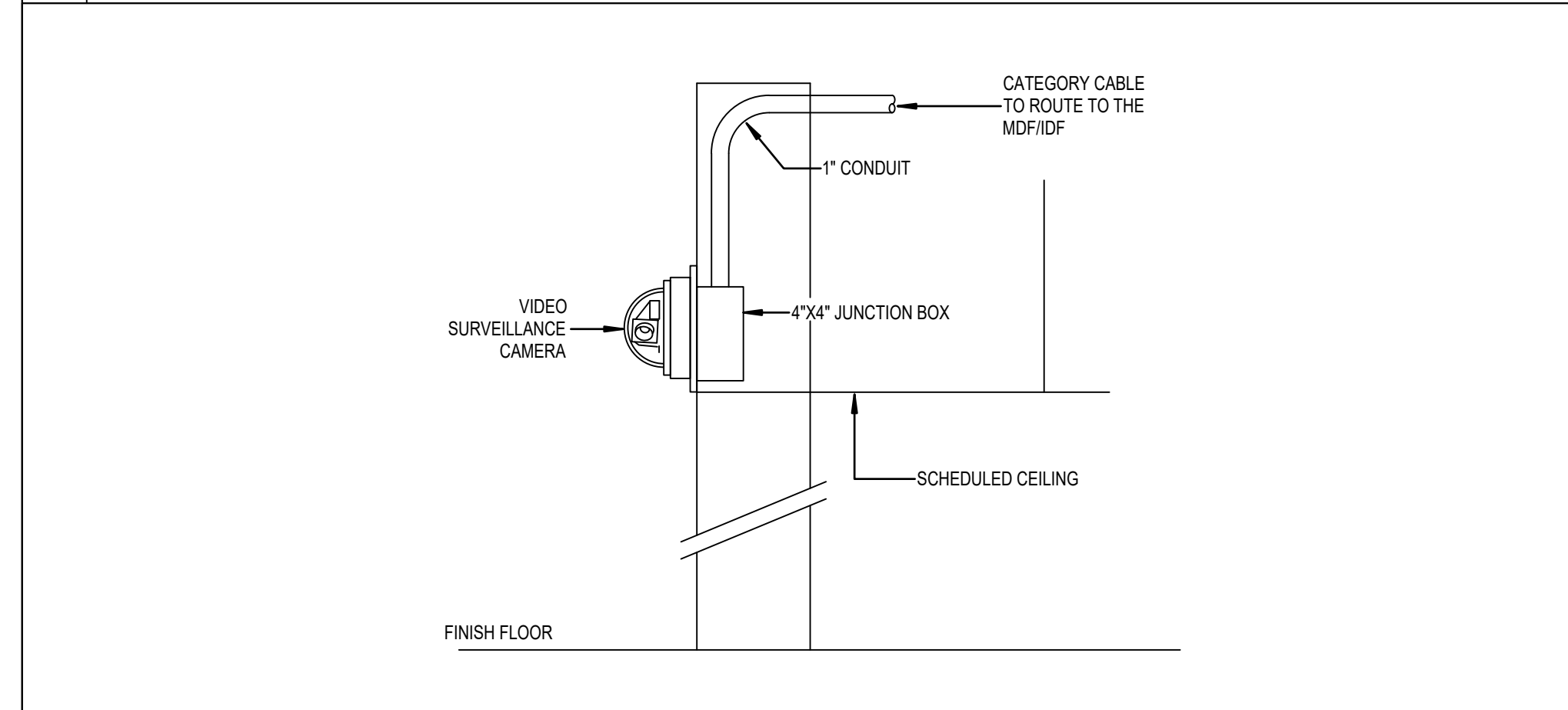
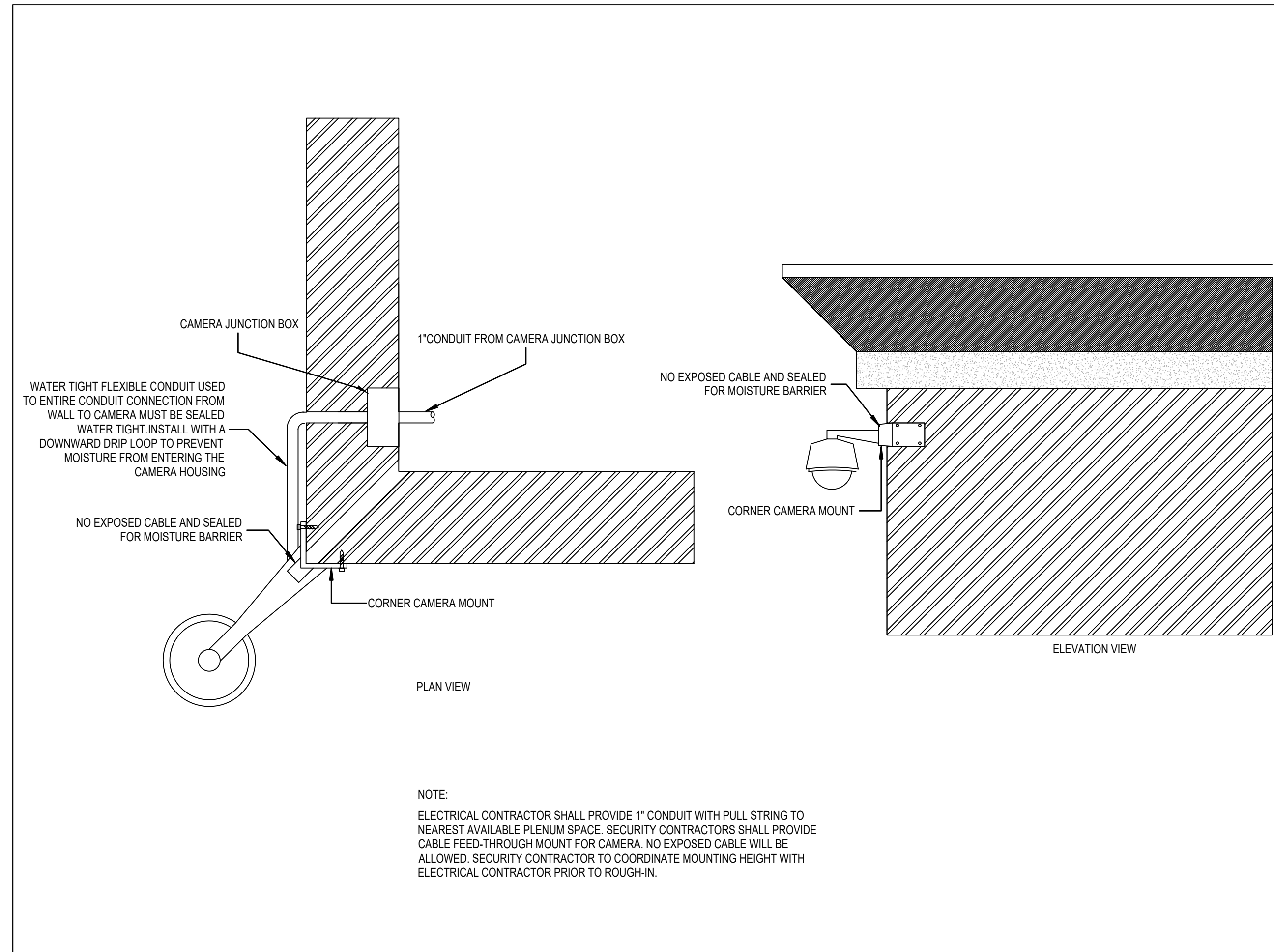


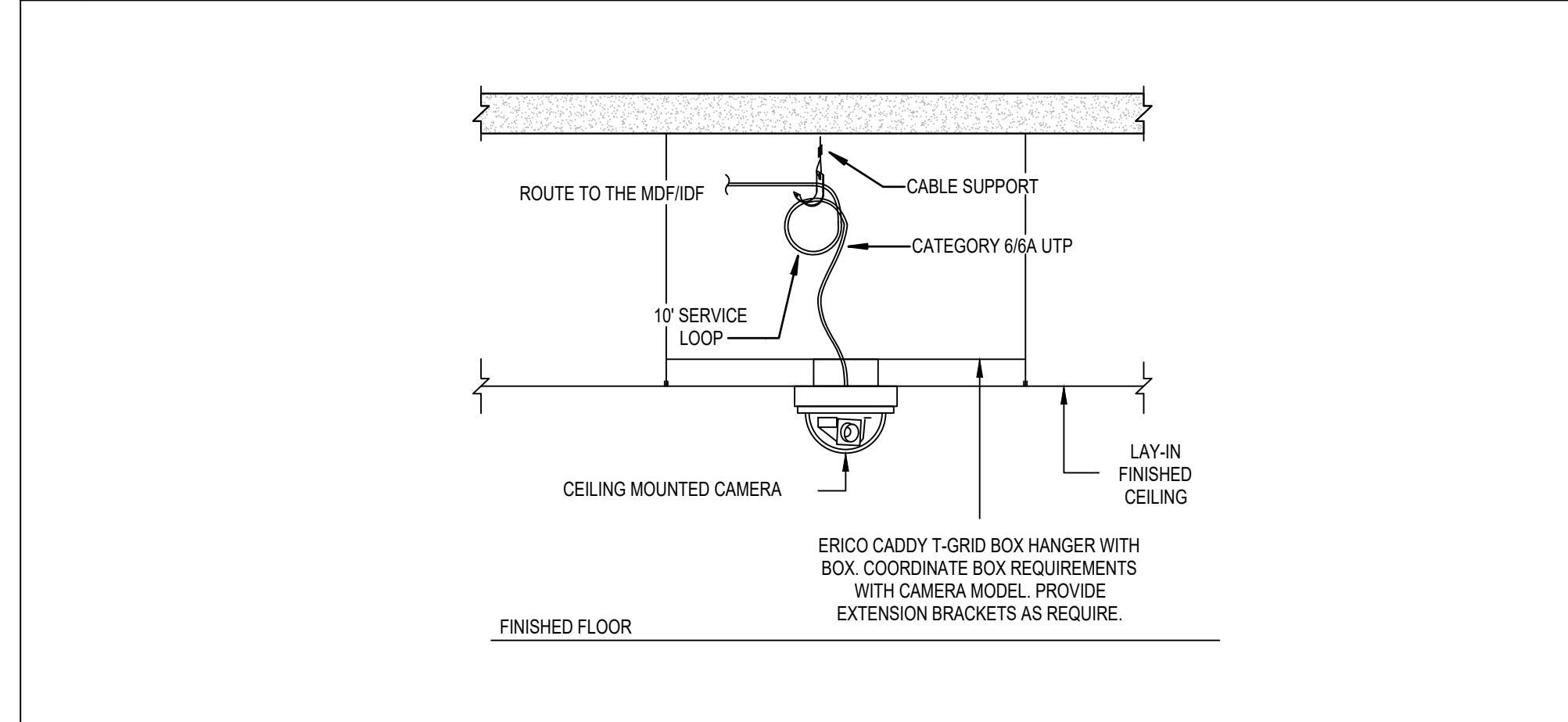
03 INTERIOR WALL MOUNTED DOME CAMERA NOT TO SCALE



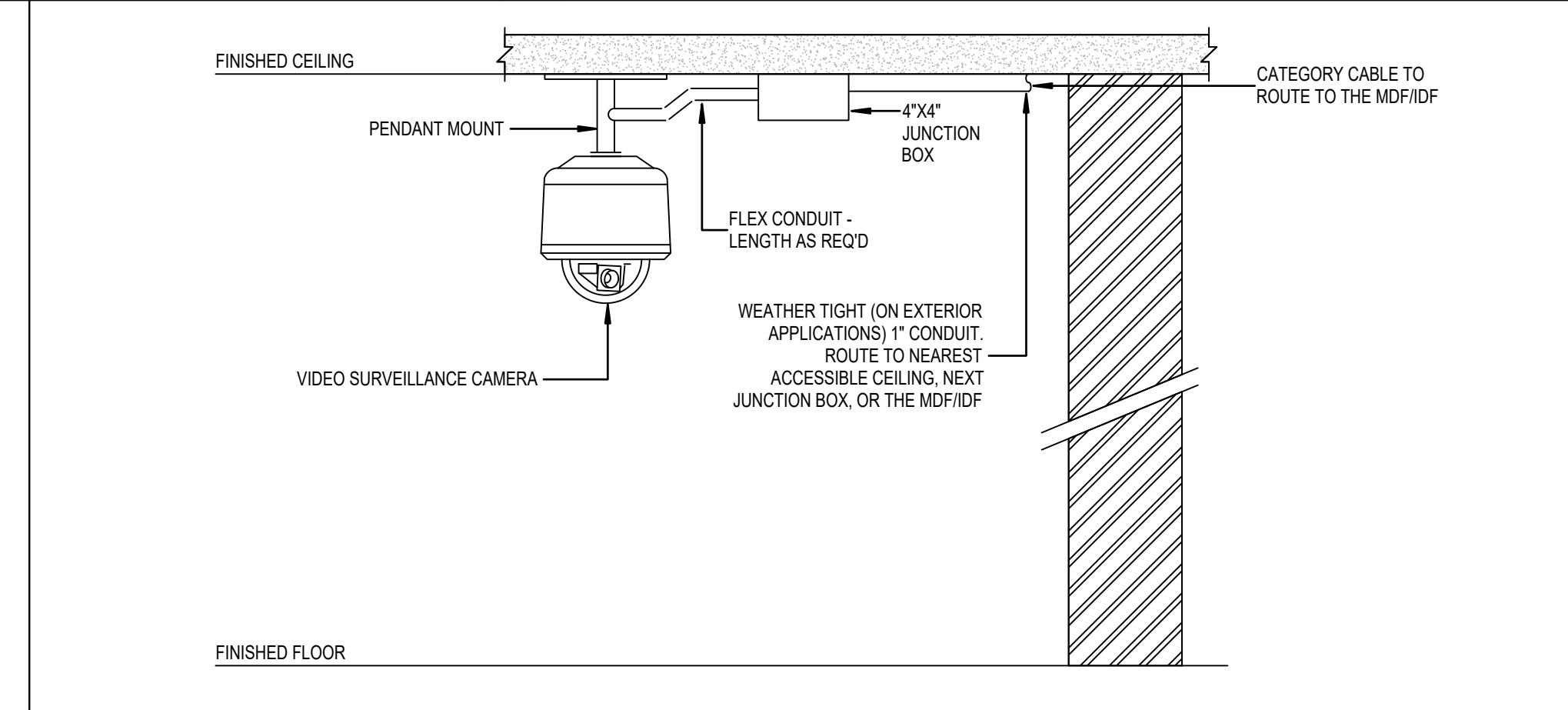
02 INTERIOR WALL MOUNT CAMERA-VERTICAL NOT TO SCALE



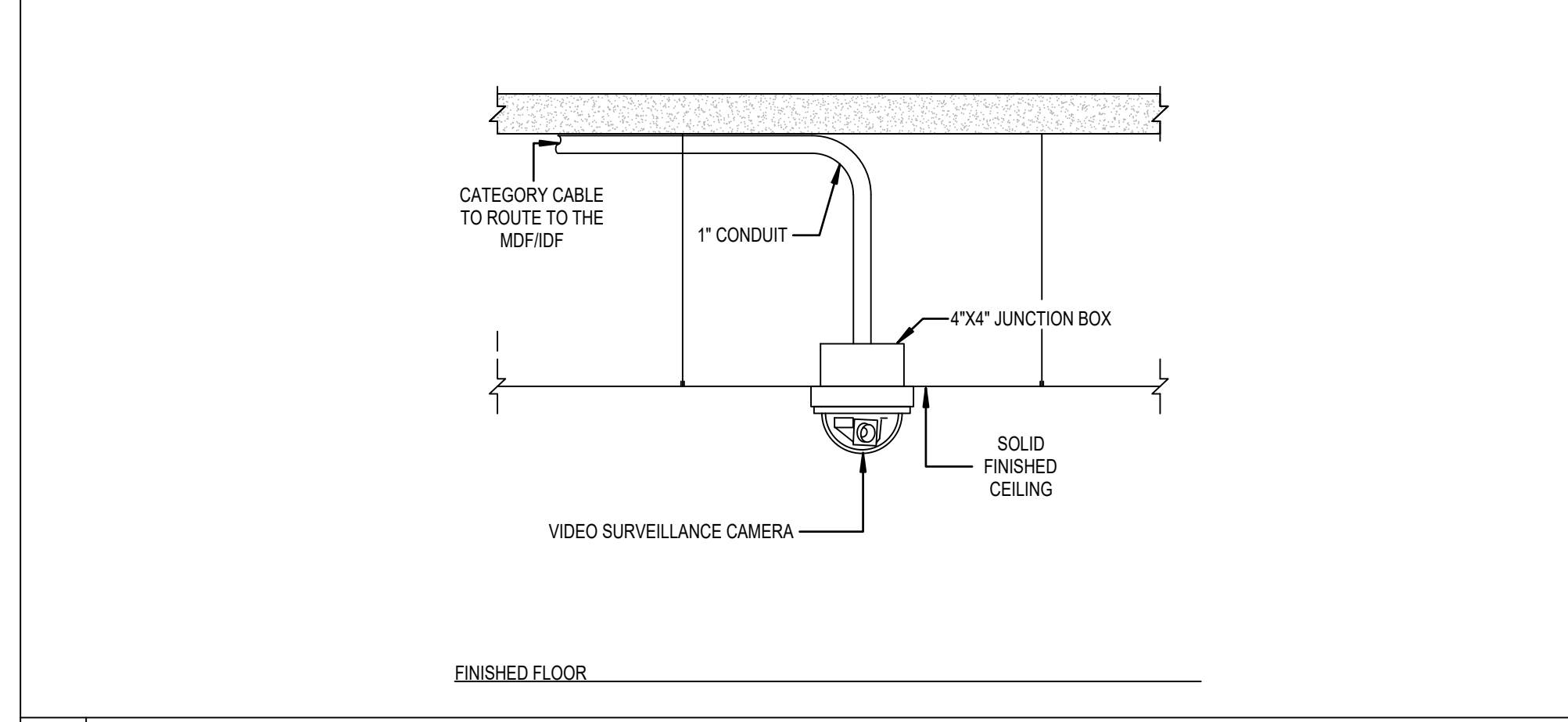
01 CORNER MOUNTING DETAIL NOT TO SCALE



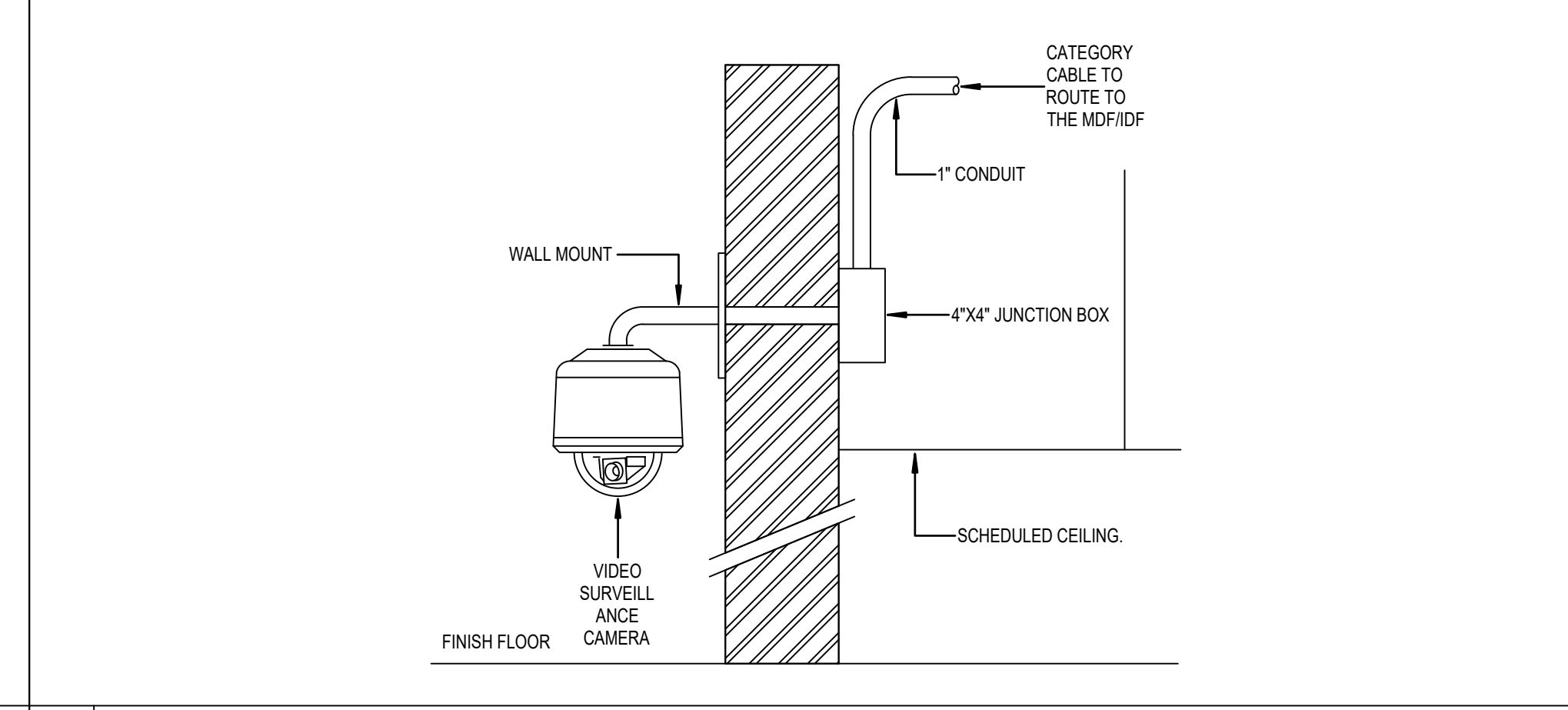
04 INTERIOR LAY-IN CEILING MOUNTED CAMERA NOT TO SCALE



05 EXT./INT. PENDANT MOUNTED DOME CAMERA NOT TO SCALE



06 EXTERIOR/INTERIOR SOLID CEILING MOUNT CAMERA NOT TO SCALE



07 EXTERIOR WALL MOUNTED DOME CAMERA NOT TO SCALE

08 NOTES NOT TO SCALE

GENERAL NOTES:
A. ELECTRICAL CONTRACTOR SHALL PROVIDE CONDUITS AND BACK BOXES. CONDUITS SHALL ROUTE TO THE NEAREST, ACCESSIBLE PLENUM SPACE.
B. ALL WALL, CORNER, PENDANT, AND UNDER CANOPY MOUNTING HEIGHTS SHALL BE COORDINATED WITH THE OWNER AND SECURITY CONSULTANT PRIOR TO ROUGH-IN.
C. SECURITY CONTRACTOR SHALL PROVIDE CAMERAS, MOUNTING HARDWARE, AND ANY OTHER COMPONENTS AND/OR HARDWARE REQUIRED FOR A COMPLETE INSTALLATION.
D. REFERENCE VIDEO SURVEILLANCE CAMERA SCHEDULES, FLOOR PLANS, AND SPECIFICATIONS FOR ADDITIONAL INSTRUCTIONS.
E. CABLE FEED-THROUGH MOUNT FOR CAMERA. NO EXPOSED CABLE WILL BE ALLOWED. SECURITY CONTRACTOR TO COORDINATE MOUNTING HEIGHT WITH ELECTRICAL CONTRACTOR PRIOR TO ROUGH-IN.

08 NOTES NOT TO SCALE