

GENERAL NOTES

1. COORDINATE EXACT LOCATIONS OF DEVICES SHOWN WITH OTHER EQUIPMENT. COORDINATE EXACT LOCATIONS OF CEILING MOUNTED DEVICES WITH LIGHTS, HVAC EQUIPMENT, AND OTHER DEVICES.
2. COORDINATE WITH MC AND PROVIDE ALL RELAYS, CONNECTIONS, AND ALL DEVICES NECESSARY TO INTERLOCK EXHAUST FANS, DAMPERS, ETC WITH PROPER CONTROL DEVICES.
3. COORDINATE EXACT LOCATIONS OF MECHANICAL EQUIPMENT WITH MECHANICAL CONTRACTOR.

KEYED NOTES

- 1 PROVIDE 120V DEDICATED CONNECTION FOR COPIER/PRINTER. COORDINATE FINAL LOCATION AND REQUIREMENTS WITH ARCHITECT/OWNER PRIOR TO ROUGH-IN.
- 2 APPROXIMATE LOCATION OF NEW PANEL P. PANEL SHALL BE RECESSED INTO WALL AND PROVIDED WITH LOCKABLE COVER. COORDINATE FINAL LOCATION AND REQUIREMENTS WITH ARCHITECT/OWNER PRIOR TO ROUGH-IN.

AGP
the Abla Griffin
Partnership L.L.C.

201 N. BROADWAY
SUITE 210
MOORE, OK. 73160
405.735.3477
AGP@theAGP.net
www.theAGP.net

KFC ENGINEERING
STRUCTURAL

SALAS O'BRIEN
MECHANICAL / ELECTRICAL



DW
drawn by
TVO
checked by
APRIL 2023
date
revisions

MOORE PUBLIC SCHOOLS
BOARD OF EDUCATION
MOORE, OKLAHOMA



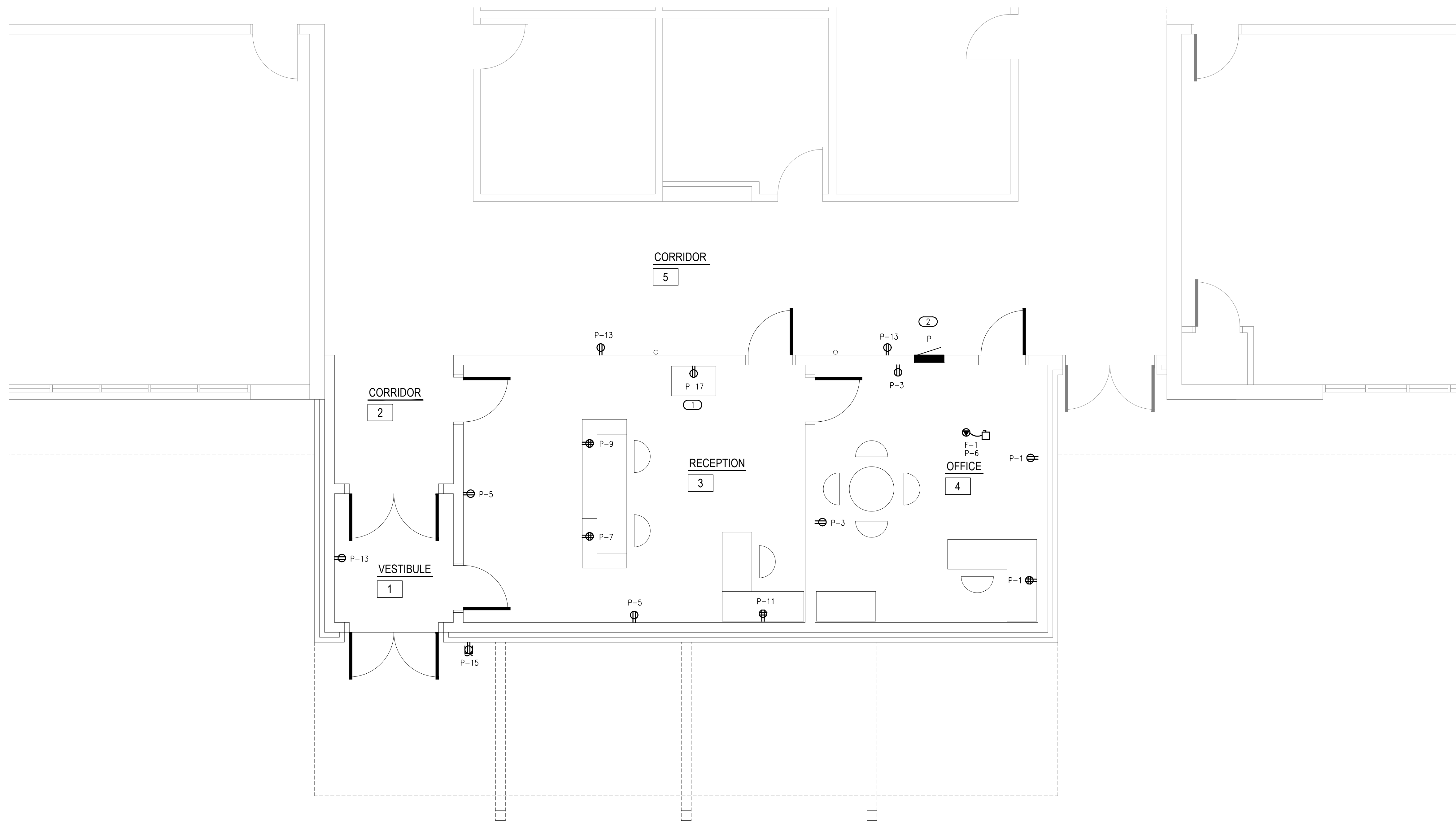
OFFICE
ADDITION -
SOUTHGATE
ELEMENTARY SCHOOL

sheet no:

E201

Salas O'Brien
2600 Van Buren St., Suite 2635
Norman, OK 73072
Salas O'Brien Registration: CA# 7058
Expiration Date: 6/30/2023
Salas O'Brien Project Number: 2023-01140-00

OWNERSHIP USE OF DOCUMENTS:
AGP EXPRESSLY RESERVES ITS
COPYRIGHT AND OTHER PROPERTY
RIGHTS OF ALL PLANS AND DRAWINGS
DESIGNED AND/OR PRODUCED. PLANS
AND DRAWINGS ARE NOT TO BE
REPRODUCED IN ANY FORM OR MANNER
WITHOUT THE EXPRESSED WRITTEN
CONSENT OF AGP.



1 ELECTRIC POWER PLAN
SCALE: 1/4" = 1'-0"

