

**GENERAL NOTES**

- OCCUPANCY SENSOR LOCATIONS ARE FOR DESIGN INTENT ONLY. LOCATE OCCUPANCY SENSORS PER MANUFACTURER'S WRITTEN INSTALLATION INSTRUCTIONS.
- COORDINATE EXACT LOCATIONS AND MOUNTING HEIGHTS OF LIGHT FIXTURES WITH HVAC EQUIPMENT AND OTHER DEVICES/EQUIPMENT.
- COORDINATE LIGHT SWITCHES WITH THERMOSTATS AND OTHER WALL MOUNTED DEVICES.
- COORDINATE EXTERIOR FIXTURE MOUNTING HEIGHT WITH ARCHITECT AND OWNER PRIOR TO ROUGH IN.
- NEW EXTERIOR LIGHTING SHALL BE CONTROLLED BY NEAREST EXISTING EXTERIOR LIGHTING SYSTEM VIA RELAY/CONTACTOR.

**KEYED NOTES**

- EXISTING FIXTURES SHALL BE REMOVED AND REPLACED AS SHOWN. EXISTING CIRCUITS AND CONTROLS SHALL REMAIN.
- NEW LIGHT FIXTURE SHALL BE POWERED AND CONTROLLED FROM EXISTING CORRIDOR LIGHTING. EC SHALL PROVIDE ALL WIRING, CONDUITS, AND DEVICES NECESSARY FOR NEW LIGHT FIXTURE CONNECTIONS.

**AGP**

the Abla Griffin Partnership L.L.C.

201 N. BROADWAY  
SUITE 210  
MOORE, OK. 73160  
405.735.3477  
AGP@theAGP.net  
www.theAGP.net

KFC ENGINEERING  
STRUCTURAL

SALAS O'BRIEN  
MECHANICAL / ELECTRICAL



DW  
drawn by  
TVO  
checked by  
APRIL 2023  
date  
revisions

MOORE PUBLIC SCHOOLS  
BOARD OF EDUCATION  
MOORE, OKLAHOMA



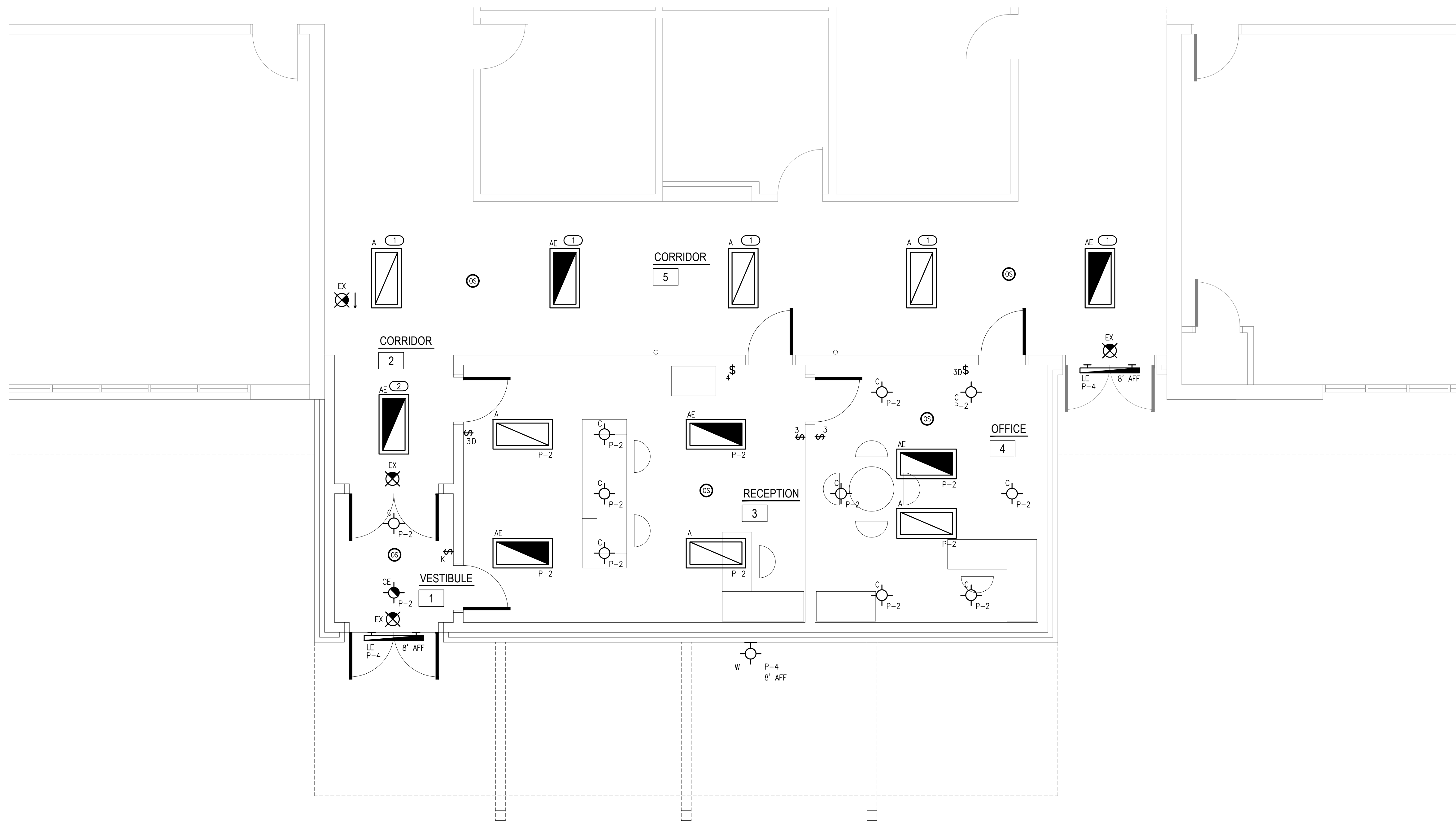
OFFICE  
ADDITION -  
SOUTHGATE  
ELEMENTARY SCHOOL

sheet no:

**E101**

**Salas O'Brien**  
2600 Van Buren St., Suite 2635  
Norman, OK 73072  
Salas O'Brien Registration: CA# 7058  
Expiration Date: 6/30/2023  
Salas O'Brien Project Number: 2023-01140-00

OWNERSHIP USE OF DOCUMENTS:  
AGP EXPRESSLY RESERVES ITS COPYRIGHT AND OTHER PROPERTY RIGHTS OF ALL PLANS AND DRAWINGS DESIGNED AND/OR PRODUCED. PLANS AND DRAWINGS ARE NOT TO BE REPRODUCED IN ANY FORM OR MANNER WITHOUT THE EXPRESSED WRITTEN CONSENT OF AGP.



**1 ELECTRIC LIGHTING PLAN**  
SCALE: 1/4" = 1'-0"

