

Construction Bulletin # 03

Client: Abla Griffin Partnership
 Project Name: Southgate Elem Office Addition
 Project Number: 2023-01140-00

April 2, 2024

Requested by: Owner
 Contractor:
 Salas O'Brien:



To: Mike Abla, Clay Griffin, AGP

This Construction Bulletin is issued to:

- Offer additional information for clarification or supplemental drawings for layout assistance.
- Request cost and time impact to initiate a change to the Contract Documents. Owner approval is required, do not commence with revisions unless directed in writing. Avoid Work in areas that may be affected by proposed change until approved or rejected. Once approved, forward Change Order documentation as required by the Contract Documents.
- Direct a required change in the Contract Documents. Proceed with change(s) as indicated. Forward Change Order documentation as required by the Contract Documents.
- Response to RFI 004.

Item No.	Description	Attachment
1	Refer to drawings for changes shown in clouds and deltas.	M101

END OF CB-03

GENERAL NOTES

1. FIELD VERIFY EXISTING CONDITIONS PRIOR TO COMMENCING WORK.
2. COORDINATE INSTALLATION OF EQUIPMENT AND DUCTWORK WITH ALL TRADES.
3. COORDINATE LOCATION OF THERMOSTATS WITH E.C. ROUGH-IN BY E.C.
4. COORDINATE CARBON DIOXIDE SENSOR LOCATION WITH EARTHSMART PRIOR TO INSTALLATION.
5. PROVIDE PIPE SLEEVES FOR ALL PIPE PENETRATIONS OF CONCRETE FLOORS, BELOW GRADE WALLS AND BEAMS.
6. FIELD VERIFY LOCATION OF EXISTING WATER, NATURAL GAS, SANITARY SEWER AND STORM SEWER LINES PRIOR TO CONSTRUCTION.

KEYED NOTES

- ① ROUTE CONDENSATE INTO NEAREST EXISTING BUILDING FURNACE CLOSET. TIE INTO EXISTING CONDENSATE LINE.
- ② DUCT UP 8X24 INTO ROOF HOOD.



RK

drawn by

DMG

checked by

APRIL 2023

date

04/02/2024 CB 03

revisions

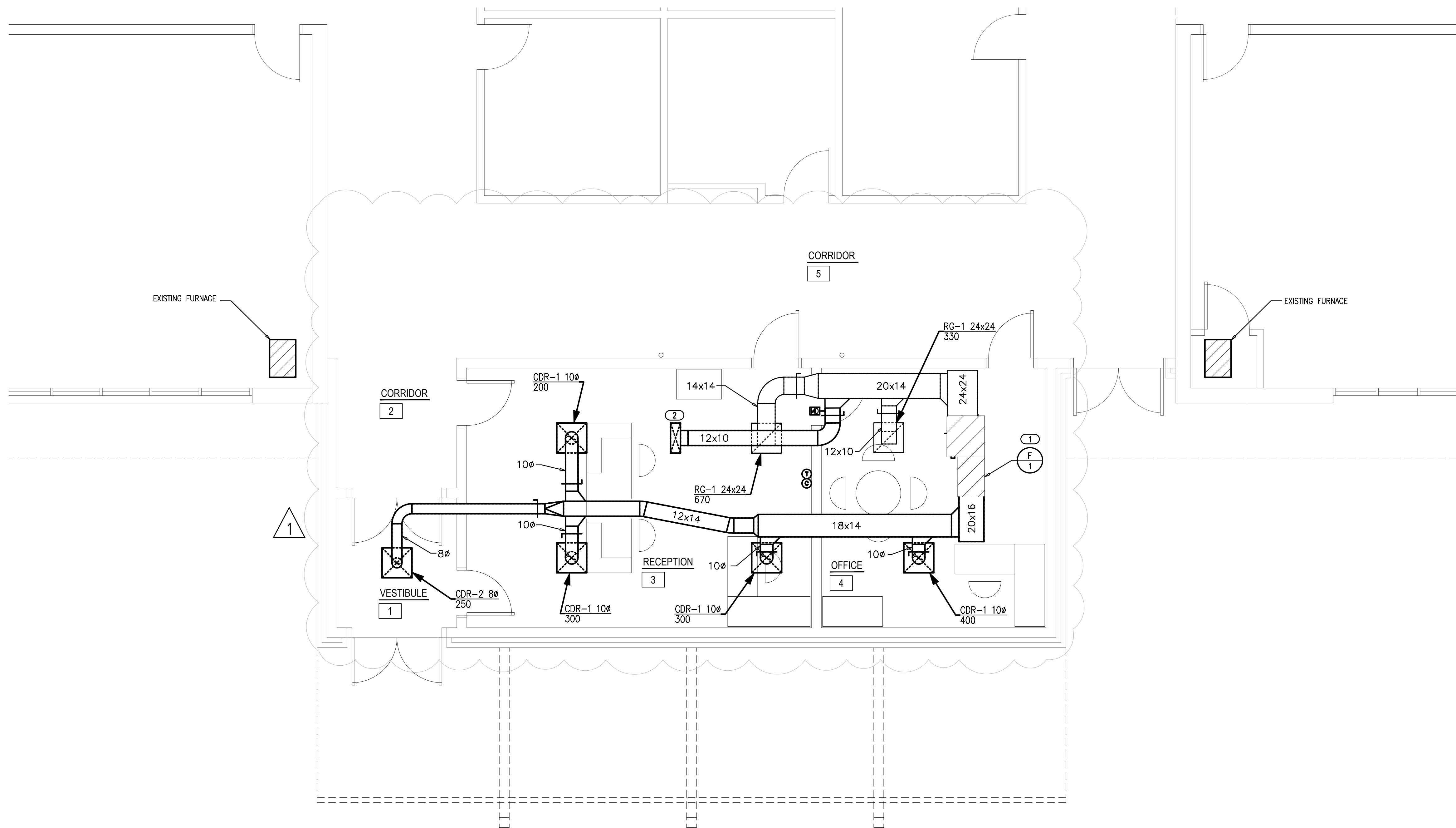
MOORE PUBLIC SCHOOLS
BOARD OF EDUCATION
MOORE, OKLAHOMA



OFFICE
ADDITION -
SOUTHGATE
ELEMENTARY SCHOOL

sheet no:

M101



1 MECHANICAL DUCTWORK PLAN

SCALE: 1/4" = 1'-0"

