

CG
drawn by _____
MA
checked by _____
SEPTEMBER 2023
0818
revisions _____

MOORE PUBLIC SCHOOLS
BOARD OF EDUCATION
MOORE, OKLAHOMA

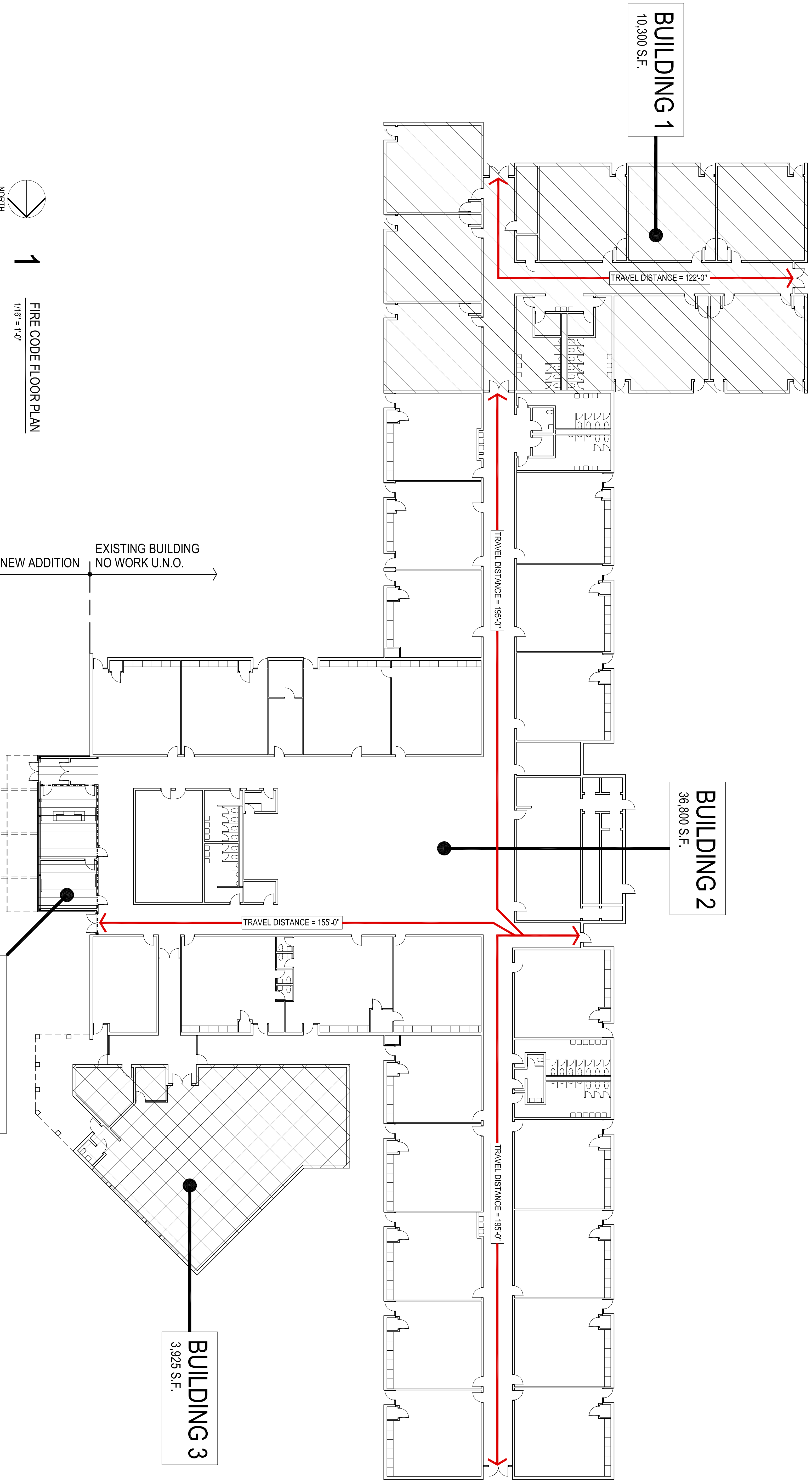


OFFICE
ADDITION -
SKYRANCH
ELEMENTARY SCHOOL

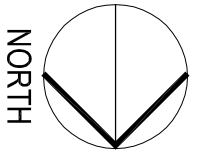
Sheet No.

A100

OWNERSHIP USE OF DOCUMENTS:
AGP EXPRESSLY RESERVES ITS
COPYRIGHT AND OTHER PROPERTY
RIGHTS OF ALL PLANS AND DRAWINGS
DESIGNED AND/OR PRODUCED BY
AGP. THESE PLANS SHALL NOT BE
REPRODUCED IN ANY FORM OR MANNER
WITHOUT THE EXPRESSED WRITTEN
CONSENT OF AGP.



FIRE CODE FLOOR PLAN



1/16" = 1'-0"

CONSTRUCTION DATA (TABLE 603):

OCCUPANCY - E
CONSTRUCTION TYPE - TYPE II - B
BASIC ALLOWABLE AREA - 58,000 S.F. PER FLOOR
ALLOWABLE STORIES - 3
ACTUAL STORIES - 1
ACTUAL HEIGHT - 15'-4"

BUILDING SIZES:

EXISTING BUILDING: BUILDING 1 (1 STORY) @ 10,300 S.F.
BUILDING 2 (1 STORY) @ 36,800 TOTAL S.F.
BUILDING 3 (1 STORY) @ 3,925 S.F.
ADDITION (1 STORY) @ 963 S.F.
TOTAL 51,988 S.F.

STRUCTURAL FIRE PROTECTION (TABLE 601):

INTERIOR BEARING WALLS 0 HOUR
EXTERIOR NONBEARING WALLS NONCOMBUSTIBLE
COLUMNS 0 HOUR
BEAMS 0 HOUR
PERMANENT PARTITIONS NONCOMBUSTIBLE
FLOOR ASSEMBLIES 0 HOUR
ROOF ASSEMBLIES 0 HOUR
EXTERIOR OPENINGS N/A

PASSIVE FIRE SAFETY SYSTEM:

PORTABLE FIRE EXTINGUISHERS (RE: SHEET A103)
TRAVEL DISTANCE = 200'-0" MAX.
DEADEND - 25'-0" MAX.
ACTUAL DEADEND - NONE
ACTIVE FIRE SAFETY SYSTEMS:
FIRE ALARM SYSTEM
SMOKE DETECTION
AUTOMATIC AIR HANDLING EQUIP. SHUTDOWN
EXIT LIGHTS/EMERGENCY LIGHTS BATTERY

CODES/REGULATIONS USED (CITY OF OKLAHOMA CITY):

2015 IBC - INTERNATIONAL BUILDING CODE
AMERICAN WITH DISABILITIES ACT ACCESSIBILITY GUIDELINES
2014 NATIONAL ELECTRICAL CODE
2015 INTERNATIONAL PLUMBING CODE
2015 INTERNATIONAL MECHANICAL CODE
2015 INTERNATIONAL FIRE CODE
2015 ENERGY CONSERVATION CODE
ASSOCIATED SUPPLEMENTS TO EACH CODE

OCCUPANT LOAD (TABLE 1004.1.1):

EXISTING BUILDING 1, 2 & 3 - 31 CLASSROOM @ 15,500 TOTAL NET S.F. / 20 S.F. PER OCCUPANT = 775 OCCUPANTS
NEW ADDITION - 3 OCCUPANTS
TOTAL OCCUPANTS = 778 OCC.
EXISTING EGRESS WIDTH:
BUILDING 1, 2 & 3: REQUIRED 155'
BUILDING 1, 2, 3 & ADDITION PROVIDED 1692'
CLASSROOMS HAVE DIRECT EXIT TO EXTERIOR

PLUMBING FIXTURES (TABLE 2902.1):

EXISTING TOTAL OCCUPANT LOAD (EDUCATION) = 775
NEW ADDITION = 3
TOTAL OCCUPANTS = 778 OCC.
TOTAL REQUIRED:
WATER CLOSETS / URINALS = 16
LAVATORIES = 16
DRINKING FOUNTAIN = 8
SERVICE SINKS = 1
TOTAL PROVIDED:
WATER CLOSETS + URINALS = 44
LAVATORIES = 28
DRINKING FOUNTAINS = 8
SERVICE SINKS = 2

NEW ADDITION
963 S.F.

BUILDING 3
3,925 S.F.

--- DENOTES PARTITIONS TO CLOSE-OUT TO BOTTOM OF DECKING - CLOSE-OUT PARTITIONS TO BE CONSTRUCTED OF 1 LAYER OF 5/8" FIRE RATED GYP. BOARD EACH SIDE ON 6" METAL STUDS @ 16" O.C. STAGGER ALL JOINTS & PROVIDE FIRE TAPE SEAL ALL PENETRATIONS W/ CONTINUOUS FIRE STOPPING INSULATION & OR SEALANT.

NOTE:
THIS PLAN INDICATES WALL TO CLOSE OUT TO STRUCTURE DUE TO FIRE CODE REQUIREMENTS. FOR THE NEW ADDITION ONLY, IT IS NOT A REPRESENTATION OF ALL WALLS NEED TO CLOSE OUT THROUGHOUT EXISTING BUILDING