

**MOORE PUBLIC SCHOOLS -
SKY RANCH ELEMENTARY SCHOOL –
OFFICE ADDITION**

Moore Public Schools - Moore, Oklahoma
AGP - Moore, Oklahoma

CONSTRUCTION BULLETIN NO. 2

February 27, 2024

1. OMIT DOOR #6 IN ITS ENTIRETY.
2. REVISE DOOR HARDWARE FOR DOORS #5 (4a) AND #8 (5a) AS PER ATTACHED SETS. VERIFY CHANGES WITH OWNER'S HARDWARE COORDINATOR / CONTACT.
3. REVISE DOOR SWING FOR DOOR #8 AS PER ATTACHED DRAWINGS.

END OF CONSTRUCTION BULLETIN NO. 2

DIVISION 8 - DOORS & WINDOWS

SECTION 08700 - FINISH HARDWARE

REVISIONS NOTED IN RED - CONSTRUCTION BULLETIN CB-2

2.02 Hardware Sets:

Hardware Group No. 004: Provide each SGL door(s) with the following:

Quantity	Description	Model Number	Finish	Mfr
3	EA HINGE	5BB1 4.5 X 4.5	652	IVE
1	EA OFFICE LOCK	L9050T 03N	626	SCH
1	EA CLASSIC CORE	30-030	626	SCH
1	EA STOP	WS407CCV OR FS436 AS REQUIRED	628	IVE
3	EA SILENCER	SR64	GRY	IVE
1	EA SURFACE CLOSER	4041 OR P4041 MTG BRKTS, SPCRS & PLATES AS REQ	689	LCN
1	EA KICK PLATE	8400 10" X 1" LDW	630	IVE

REFER TO ELECTRICAL FOR ACCESS, CARD READER, ETC. INFORMATION.

Hardware Group No. 004a: Provide each SGL door(s) with the following:

Quantity	Description	Model Number	Finish	Mfr
3	EA HINGE	5BB1 4.5 X 4.5	652	IVE
1	EA OFFICE LOCK	L9050T 03N	626	SCH
1	EA CLASSIC CORE	30-030	626	SCH
1	EA STOP	WS407CCV OR FS436 AS REQUIRED	628	IVE
3	EA SILENCER	SR64	GRY	IVE
1	EA SURFACE CLOSER	4041 OR P4041 MTG BRKTS, SPCRS & PLATES AS REQ	689	LCN
1	EA KICK PLATE	8400 10" X 1" LDW	630	IVE

REFER TO ELECTRICAL FOR ACCESS, CARD READER, ETC. INFORMATION.

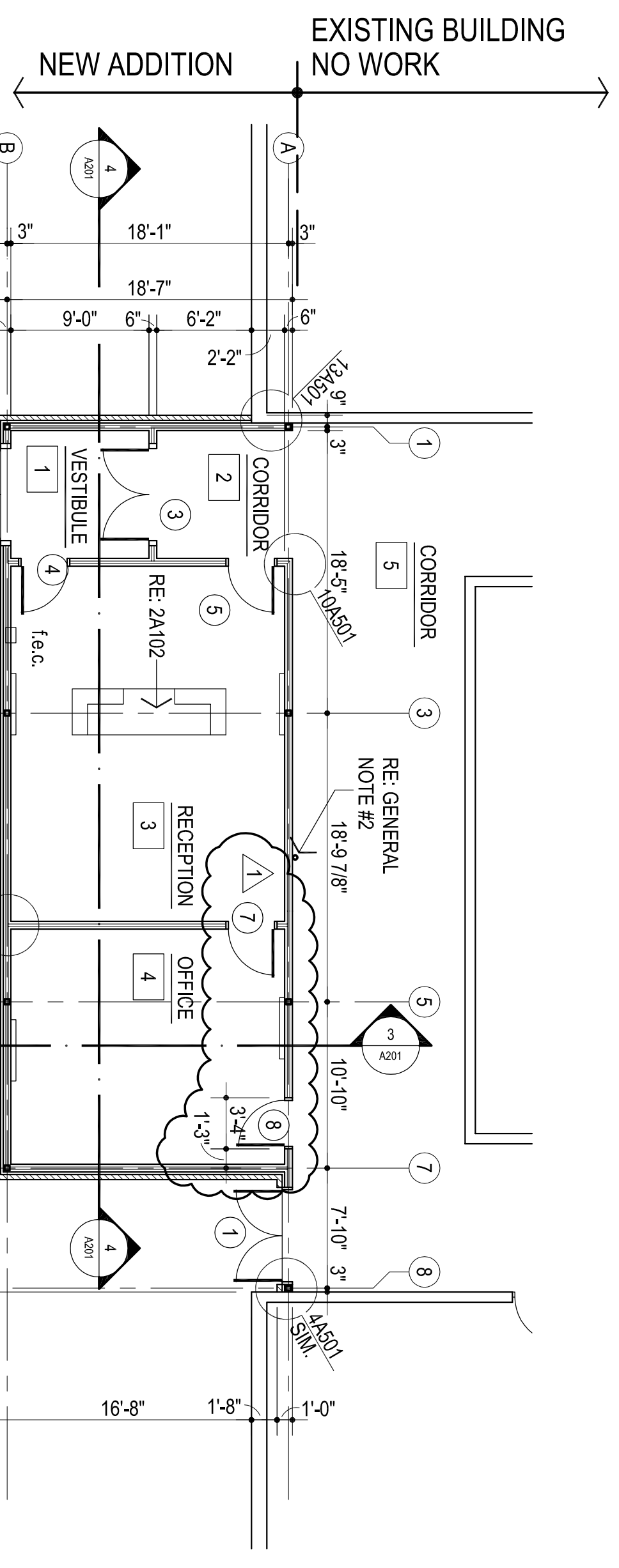
Hardware Group No. 005: Provide each SGL door(s) with the following:

Quantity	Description	Model Number	Finish	Mfr
3	EA HINGE	5BB1 4.5 X 4.5	652	IVE
1	EA OFFICE LOCK	L9050T 03N	626	SCH
1	EA CLASSIC CORE	30-030	626	SCH
1	EA STOP	WS407CCV OR FS436 AS REQUIRED	628	IVE
3	EA SILENCER	SR64	GRY	IVE

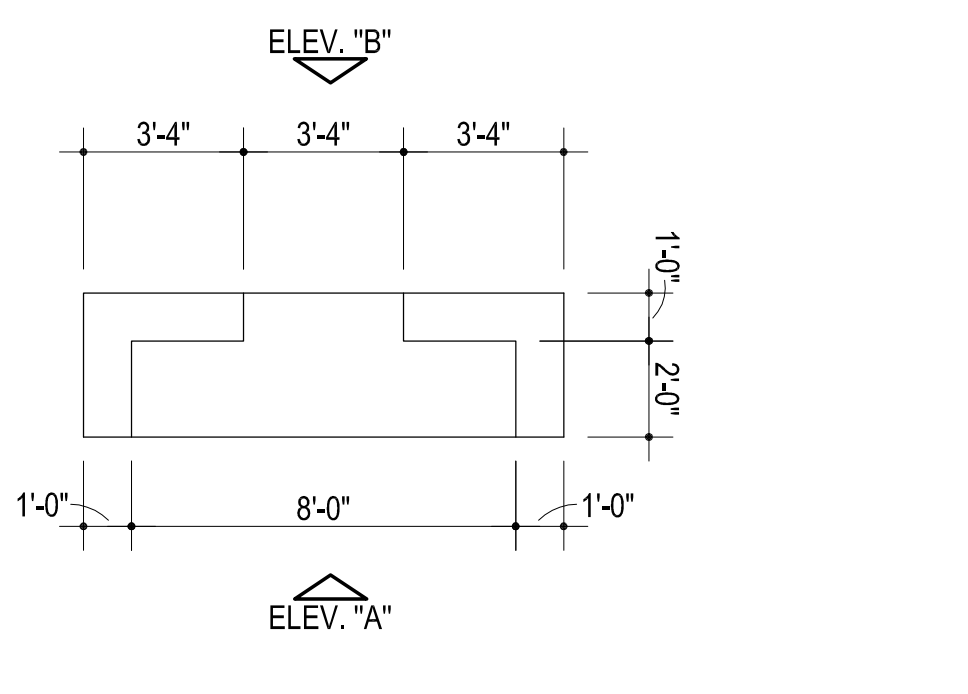
Hardware Group No. 005a: Provide each SGL door(s) with the following:

Quantity	Description	Model Number	Finish	Mfr
3	EA HINGE	5BB1 4.5 X 4.5	652	IVE
1	EA LOCKSET	ND66C RHO 10-025	626	SCH
1	EA CLASSIC CORE	30-030	626	SCH
1	EA STOP	WS407CCV OR FS436 AS REQUIRED	628	IVE
3	EA SILENCER	SR64	GRY	IVE

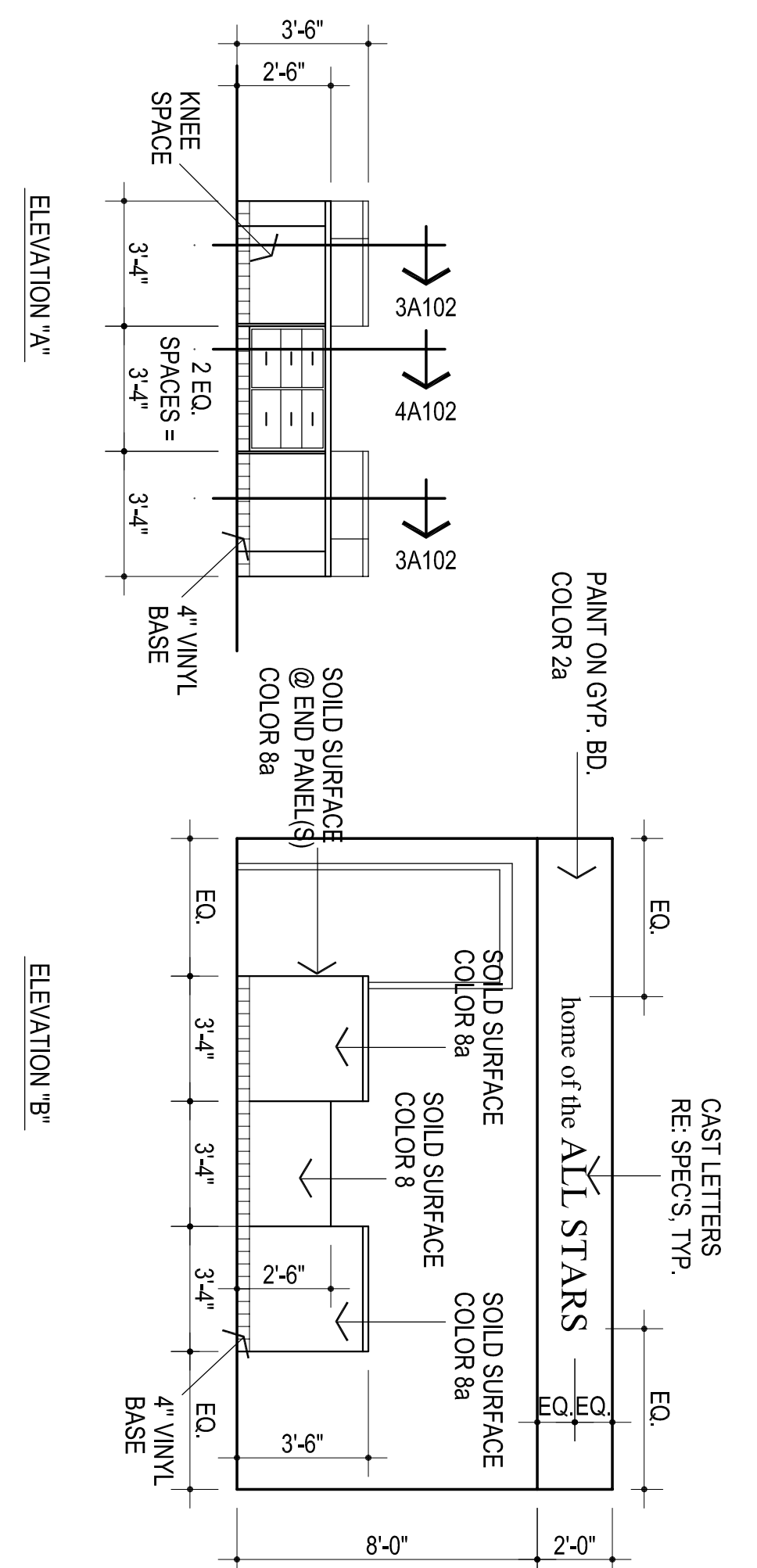
Please note - CM to provide ALL connections required to the fire alarm, security, and electrical systems necessary for fully functioning devices meeting all applicable codes and standards.



1
FLOOR PLAN
1/8" = 1'-0"
963 sq. ft.



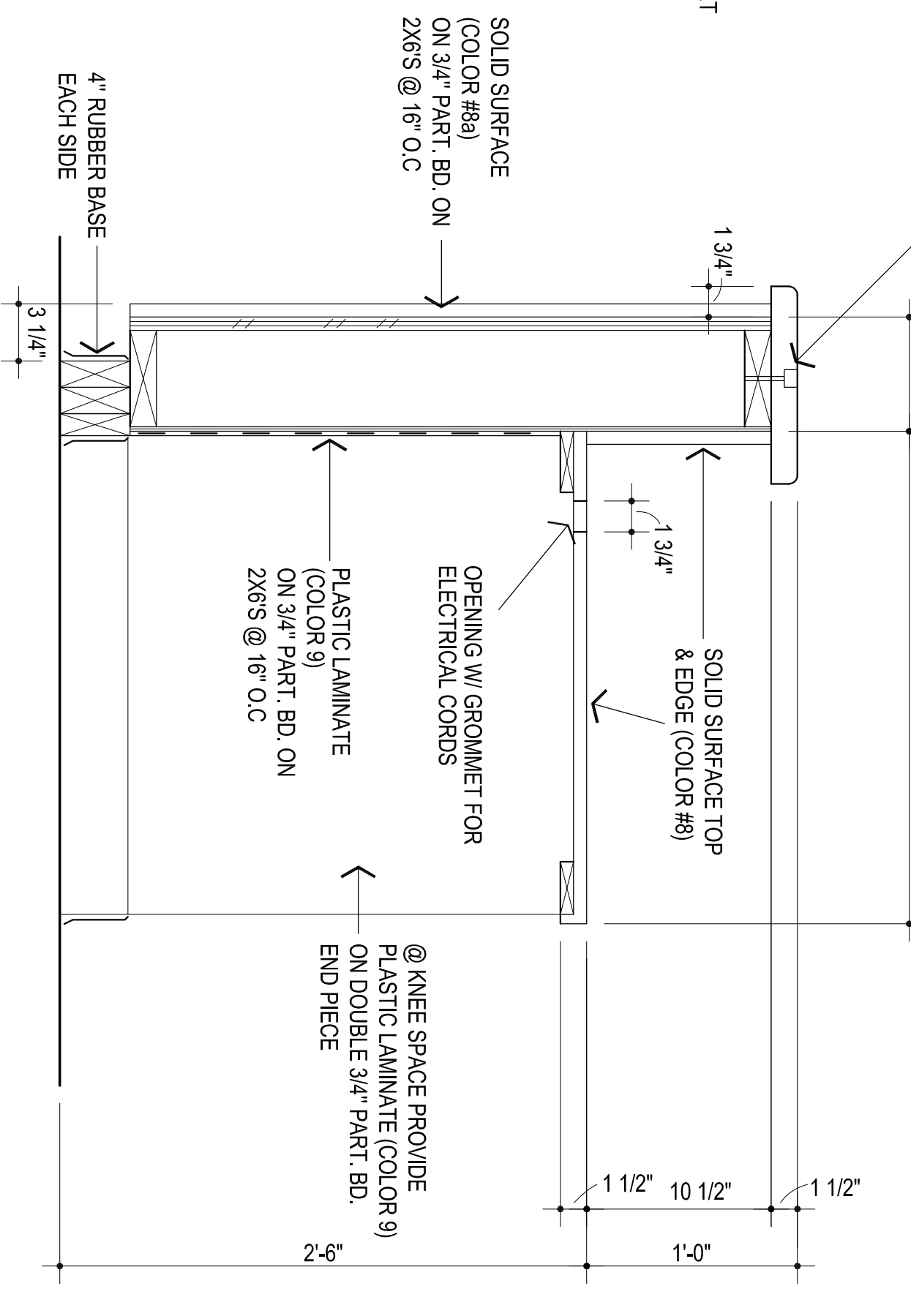
2
MILLWORK ROOM #3
1/4" = 1'-0"



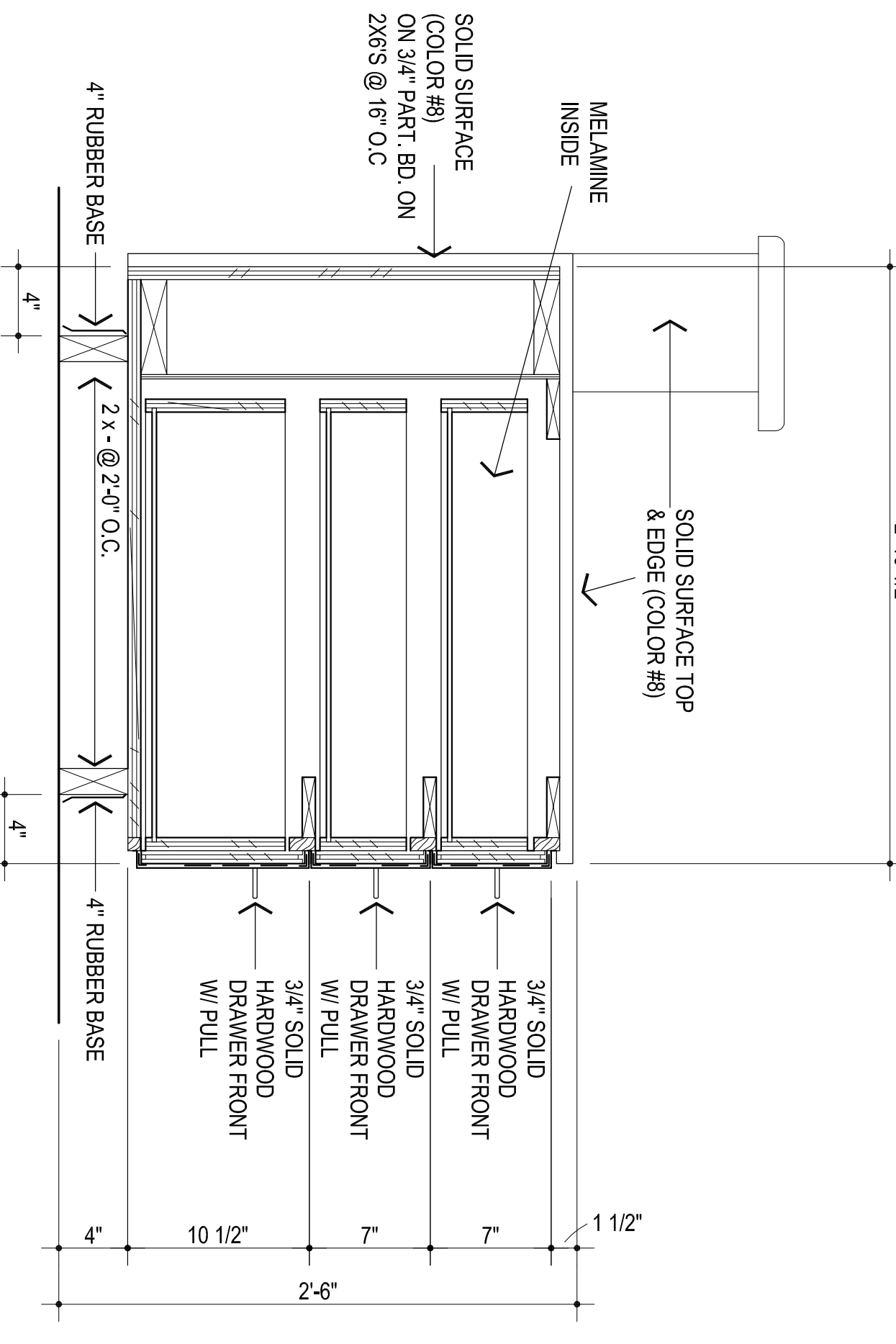
1x12 SOLID RED OAK CAP -
EASE ALL EXPOSED CORNERS
COUNTER SINK ANCHOR TO SUBFRAMING
& PLUG W/ MATCHING MATERIAL
PROVIDE @ 16" O.C.

MISCELLANEOUS NOTES:

1. F.E.C. - FIRE EXTINGUISHER AND CABINET
2. EXISTING COLUMNS TO REMAIN PAINT TO MATCH REV WALLS
3. REVERSE DOOR HARDWARE SET - 4a
4. REVERSE DOOR HARDWARE SET - 5a



3
SECTION @ COUNTER
1 1/2" = 1'-0"

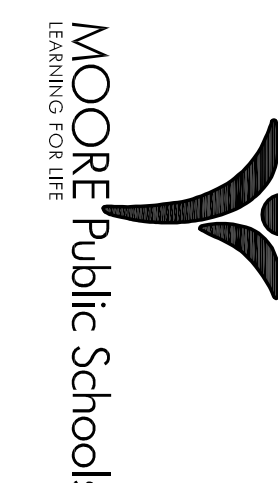


4
SECTION @ COUNTER
1 1/2" = 1'-0"

CG
designed by
MA
checked by
SEPTEMBER 2023
0818
revisions
1 CB-2



MOORE PUBLIC SCHOOLS
BOARD OF EDUCATION
MOORE, OKLAHOMA



OFFICE
ADDITION -
SKYRANCH
ELEMENTARY SCHOOL

Sheet No.
A102

OWNERSHIP USE OF DOCUMENTS:
AGP EXPRESSLY RESERVES ITS
COPYRIGHT AND OTHER PROPERTY
RIGHTS OF ALL PLANS AND DRAWINGS
DESIGNED AND/OR PRODUCED HEREIN.
REPRODUCTION IN ANY FORM OR MANNER
WITHOUT THE EXPRESSED WRITTEN
CONSENT OF AGP.

DESCRIPTION	RM. NO.	FLOOR	BASE	CEILING	CLS. HT.	REMARKS	RM. NO.	WALLS	PAINT / COLOR SCHEDULE					
									C.O.G.	N	E	S	W	REMARKS
	1			VINYL TILE					(1)	(2a)	(2a)	(2a)	(7/17)	
	2			CARPET TILE					(1)(3)	(2a)	(2a)	(2a)	(7/17)	
	3			EXISTING VINYL TILE					(1)(3)	(2)	(2)	(2)	(7/17)	
	4			RUBBER					(1)(3)	(2)	(2)	(2)	(7/17)	
	5			NONE					(1)(3)	(2)	(2)	(2)	(7/17)	
VESTIBULE	1			2 X 2 ACOUT. LAY-IN (TEG)	9'-4"				(1)	(2a)	(2a)	(2a)	(7/17)	
CORRIDOR	2			GYP. BOARD	10'-0"				(1)(3)	(2)	(2)	(2)	(7/17)	
RECEPTION	3				10'-0" 9'-6" 9'-6" 8'-8"				(1)(3)	(2)	(2)	(2)	(7/17)	
OFFICE	4				8'-8"				(1)(3)	(2)	(2)	(2)	(7/17)	
CORRIDOR	5				10'-0"				(1)(3)	(2)	(2)	(2)	(7/17)	

DOOR NO.	LOCATION FROM TO	DOOR ELEV.	DOOR MAT'L	WIDTH	HEIGHT	TH K	FRAME ELEV.	DOOR DETAILS	REMARKS	HWDR. SET NO.
1	5 EXT. A	A	H.M.	PR. 3'-0"	7'-0"	1 3/4"	B	14501 SILL 154501 34501 44501		1
2	1 EXT. B	A	ALUMI. PRE. 3'-0"	3'-0"	7'-0"	1 3/4"	C	14501 154501 84501 94501		2
3	2 1 A	B	ALUMI. PRE. 3'-0"	3'-0"	7'-0"	1 3/4"	C	14501 SILL 164501 94501 94501	90 MIN DOOR & FRAME	3
4	1 3 A	A	ALUMI. 3'-0"	3'-0"	7'-0"	1 3/4"	A	2A501 164501 94501 94501	90 MIN DOOR & FRAME	4
5	2 3 A	A	ALUMI.	3'-0"	7'-0"	1 3/4"	A	2A501 164501 94501 94501	90 MIN DOOR & FRAME	4a
6	NUMBER NOT USED	C	WD	3'-0"	7'-0"	1 3/4"	A	2A501 164501 94501 94501	NUMBER NOT USED	5
7	3 4 C	C	WD	3'-0"	7'-0"	1 3/4"	A	2A501 164501 94501 94501	90 MIN DOOR & FRAME	5a
8	5 4 C	C	WD	3'-0"	7'-0"	1 3/4"	A	2A501 164501 94501 94501	90 MIN DOOR & FRAME	5

1 ROOM FINISH SCHEDULE

- SCHEDULE ORIENTED SAME AS PLAN
- INDICATES MATERIAL IN A GIVEN AREA
- MATERIAL ON ALL SURFACES
- MATERIAL ON EACH INDIVIDUAL SURFACE
- IF CIRCLE IS BLACKENED - SURFACE TO RECEIVE PAINTER'S FINISH
- IF CIRCLE IS BLANK - SURFACE OR MATERIAL IS PREFINISHED OR NOT PAINTED

PAINT:

- 1 GYP. BOARD CEILINGS: SHERWIN-WILLIAMS - SW7006 - EXTRA WHITE
- 2 WALLS - FIELD: SHERWIN-WILLIAMS - SW7008 - ALABASTER
- 2a WALLS - ACCENT: SHERWIN-WILLIAMS - TO BE SELECTED BY ARCHITECT.
- 2b WALLS - ACCENT: SHERWIN-WILLIAMS - TO BE SELECTED BY ARCHITECT.
- 3 H.M. DOORS & FRAMES: SHERWIN-WILLIAMS - SW6992 - INKWELL
- 4 MISCELLANEOUS METALS / PAINTED EXTERIOR CANOPIES: SHERWIN-WILLIAMS - SW6992 - INKWELL
- 5 WOOD DOORS & MILLWORK: ARCHITECTURAL WOOD DOORS - CLEAR CLOT

PREFINISHED COLORS:

- 6 CARPET TILES: INTERPACE AE315 / 109816 GRANITE / AZURE
 - 7 RUBBER WALL BASE: ROPPE - BLACK
 - 8 SOLID SURFACE (COUNTERTOPS): CORIAN - DEEP CAVIR
 - 8a SOLID SURFACE (COUNTERTOPS): CORIAN - EVENING PRIMA / JUNIPER
 - 9 PLASTIC LAMINATE (FACING AND EDGING): WILSONART - D315 - PLATINUM
 - 10 VINYL T¹ EDGING: - TO BE SELECTED FROM MFRS STANDARD COLORS
 - 11 MELAMINE: TO BE SELECTED FROM MFRS STANDARD COLORS
 - 12 NUMBER NOT USED
 - 13 2 X 2 ACOUSTICAL LAY - IN TILES - REGULAR EDGE: REFER SPECIFICATIONS
 - 14 INTERIOR SIGNAGE: MOHAWK SIGN SYSTEMS - BLACK BACKGROUND W/ WHITE LETTERS
 - 15 MARKERBOARD: BEST-RITE - WHITE
 - 16 TACKBOARD: BEST-RITE CHALKBOARD CO. - BR415 - ANTIQUE WHITE
 - 17 VINYL FLOOR TILE - KARNDIEN - COLOR "A" MONTANA LT203 / COLOR "B" INDIANA LT202
- EXTERIOR COLORS:
- 18 PREFINISHED METAL COPINGS: - TO BE VERIFIED WITH ARCHITECT PRIOR TO CONSTRUCTION - MATCH EXISTING
 - 19 MASONRY BRICK VENEER- CLOUD CERAMICS: - TO BE VERIFIED WITH ARCHITECT PRIOR TO CONSTRUCTION - MATCH EXISTING

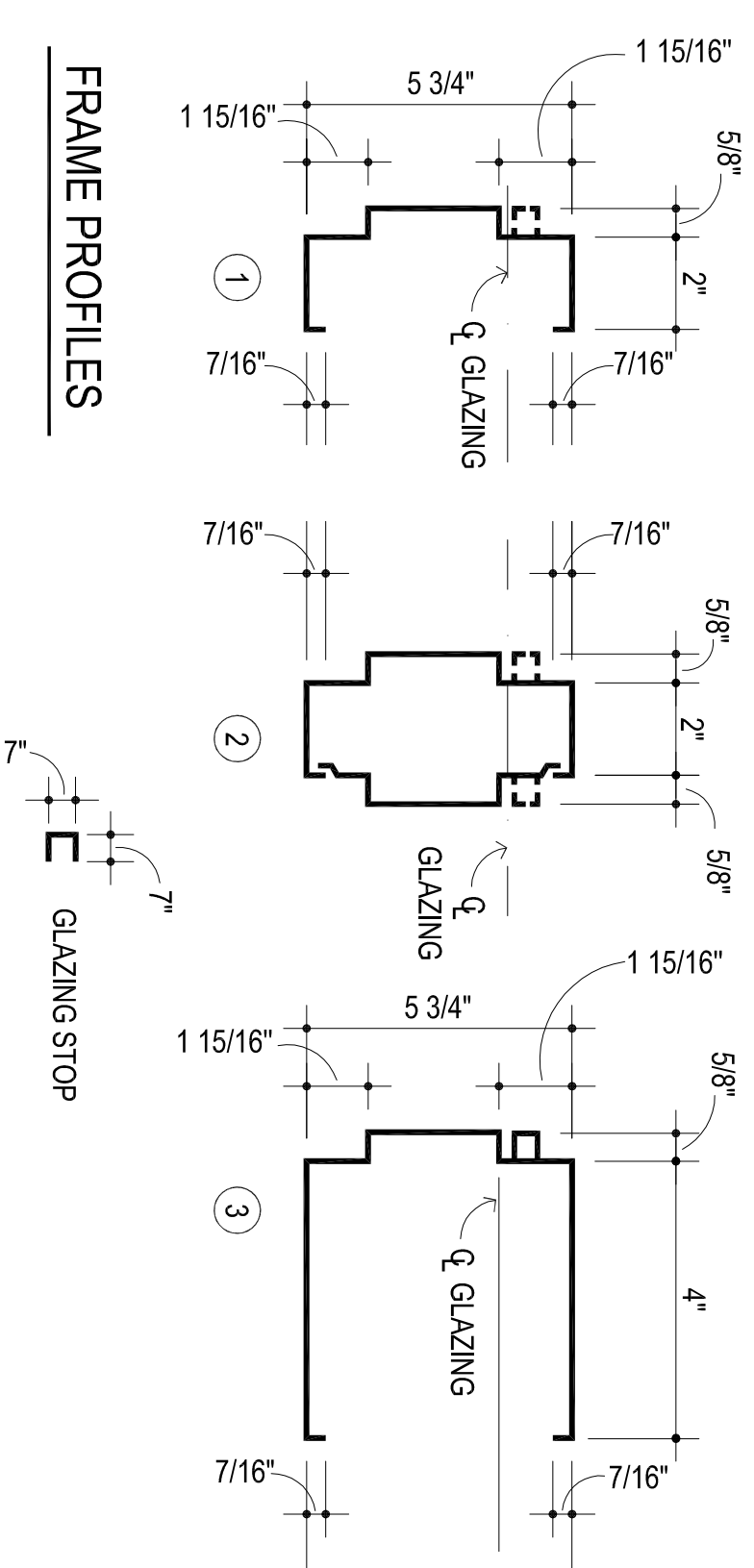
2 COLOR SCHEDULE

3 DOOR SCHEDULE

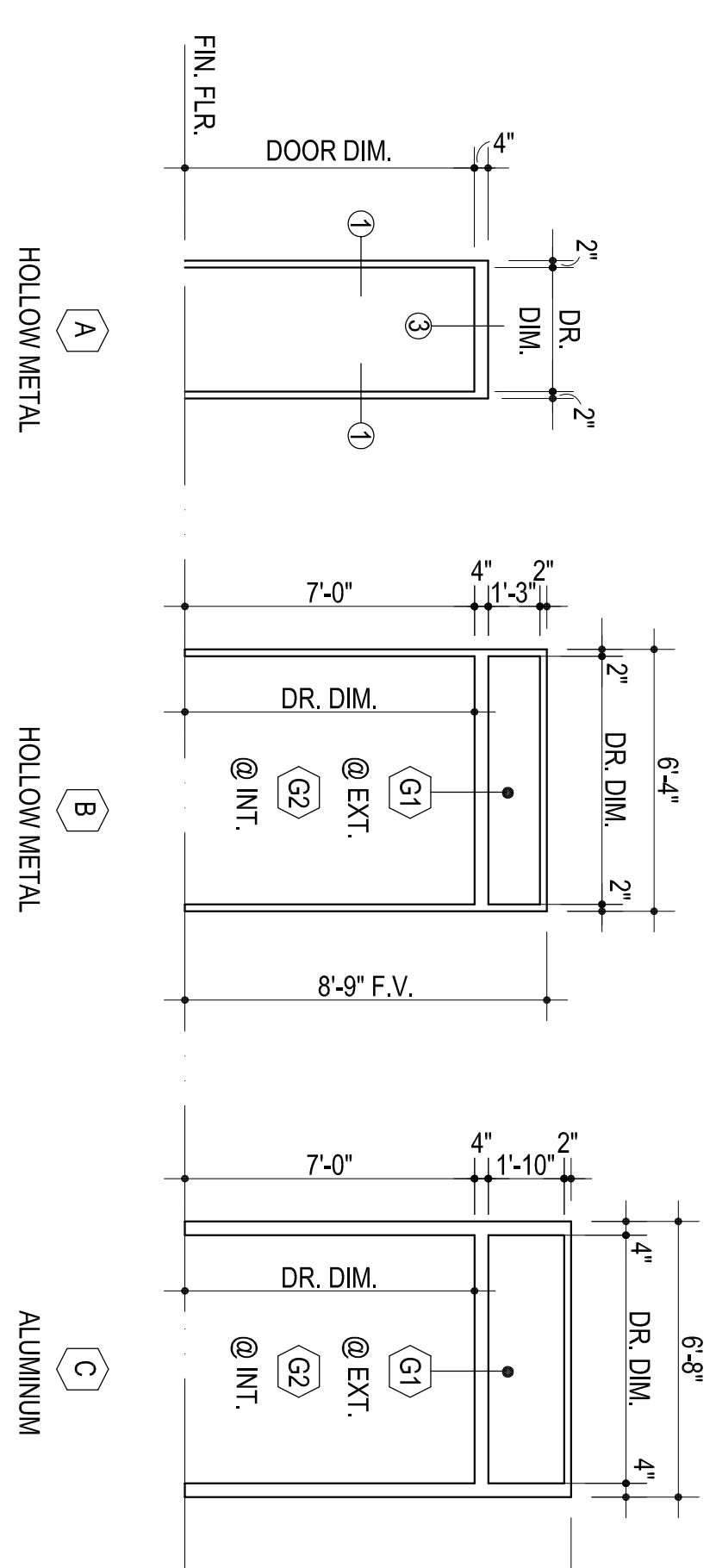
- G1 7/8" NOM. TEMPERED INSULATING GLASS
- G2 1/4" CLEAR TEMPERED GLASS
- G3 1/4" IMPACT RESISTANT GLASS

4 GLAZING SCHEDULE

5 FRAME PROFILES



6 FRAME ELEVATIONS



7 DOOR ELEVATIONS

