

Panel		ROOM		VOLTS		208Y/120V 3P 4W		AIC EXISTING	
C-2		MOUNTING SURFACE		BUS AMPS		225		MAIN BKR MLO	
		FED FROM UTILITY		NEUTRAL		100%		LUGS STANDARD	
		NOTE EXISTING PANEL							
CKT #	CKT BKR	LOAD KVA	CIRCUIT DESCRIPTION	CKT #	CKT BKR	LOAD KVA	CIRCUIT DESCRIPTION		
1	20/1	1.92	EXISTING LIGHTING LOAD	a	2	20/1	1.92	EXISTING LIGHTING LOAD	
3	20/1	1.92	EXISTING LIGHTING LOAD	b	4	20/1	1.92	EXISTING LIGHTING LOAD	
5	20/1	1.92	EXISTING RECEPTACLES LOAD	c	6	20/1	1.92	EXISTING RECEPTACLES LOAD	
7	20/1	1.92	EXISTING LIGHTING LOAD	a	8	20/1	1.92	EXISTING LIGHTING LOAD	
9	20/1	1.92	EXISTING LIGHTING LOAD	b	10	20/1	1.92	EXISTING LIGHTING LOAD	
11	20/1	1.92	EXISTING RECEPTACLES LOAD	c	12	20/1	1.92	EXISTING RECEPTACLES LOAD	
13	20/1	1.92	EXISTING LIGHTING LOAD	a	14	20/1	1.92	EXISTING RECEPTACLES LOAD	
15	20/1	1.92	EXISTING LIGHTING LOAD	b	16	20/1	1.92	HOT WATER EXISTING LOAD	
17	20/1	1.92	WATER FOUNT. EXISTING LOAD	c	18	20/1	1.92	WATER FOUNT. EXISTING LOAD	
19	20/1	1.92	HOT WATER EXISTING LOAD	a	20	20/1	1.92	WATER FOUNT. EXISTING LOAD	
21	20/1	1.92	EXISTING NIGHT LIGHT LOAD	b	22	20/1	1.92	WATER FOUNT. EXISTING LOAD	
23	20/1	1.92	EXISTING PLUGMOLD LOAD	c	24	20/1	1.92	EXISTING OUTSIDE DOORWAY LTS.	
25	20/1	1.92	EXISTING NIGHT LIGHT LOAD	a	26	20/1	1.92	EXISTING OUTSIDE CANOPY LTS.	
27	20/1	1.92	EXISTING POWER LOAD	b	28	20/1	1.92	EXISTING RECEPTACLES LOAD	
29	20/1	1.92	EXISTING RECEPTACLE LOAD	c	30	20/1	1.92	EXISTING RECEPTACLES LOAD	
31	20/1	1.92	EXISTING POWER POLE LOAD	a	32	20/1	1.92	EXISTING RECEPTACLES LOAD	
33	20/1	0.06	NEW CANPOY LIGHTING	b	34	20/1	0	SPACE	
35	20/1	0.108	NEW EXTERIOR WALL PACKS	c	36	20/1	1.92	EXISTING RECEPTACLE LOAD	
37	20/1	0	SPACE	a	38	20/1	0	SPACE	
39	20/1	0	SPACE	b	40	20/1	0	SPACE	
41	20/1	0	SPACE	c	42	20/1	0	SPACE	

	CONN KVA	CALC KVA		CALC KVA
LIGHTING	23.2	29	TOTAL LOAD	54.2
RECEPTACLES	40.3	25.2	BALANCED 3-PHASE LOAD	150 A
		(125%)	PHASE A	100%
		(50%>10)	PHASE B	91%
			PHASE C	100%

EXISTING LOADS ARE APPROXIMATIONS. EC TO FIELD VERIFY EXISTING LOADS PRIOR TO BEGINNING WORK.

TYPE	SYMBOL	DESCRIPTION	MANUFACTURER	REFERENCE CATALOG #
EX1		LED EMERGENCY EXIT SIGN WITH 90 BATTERY BACK-UP.	LITHONIA	LQM S W 3 R 120/277 EL N M6
EX2		DOUBLE FACED LED EMERGENCY EXIT SIGN WITH 90 BATTERY BACK-UP.	LITHONIA	LQM S W 3 R 120/277 EL N M6
S		1X4 WET LOCATION RATED STRIP FIXTURE.	LITHONIA	CSVT L48 AL03 MVOLT SWW3 80CRI
W		EXTERIOR WALL PACK.	LITHONIA	TWR1 LED AL0 SWW2 UVOLT PE DDBTXD

GENERAL NOTES:  
EQUIVALENT ALTERNATE LIGHT FIXTURES MAY BE PROVIDED FOR BIDDING PURPOSES. THE ENGINEER DOES NOT TAKE RESPONSIBILITY FOR ENSURING ALTERNATE LIGHT FIXTURES USED FOR BIDDING ARE EQUAL; THE CONTRACTOR SHALL BE RESPONSIBLE FOR ENSURING ALTERNATE FIXTURES ARE EQUIVALENT TO THOSE SPECIFIED PRIOR TO BID. THE WINNING BID PACKAGE SHALL BE SUBMITTED TO THE ENGINEER FOR REVIEW IN ACCORDANCE WITH THE SPECIFICATIONS.

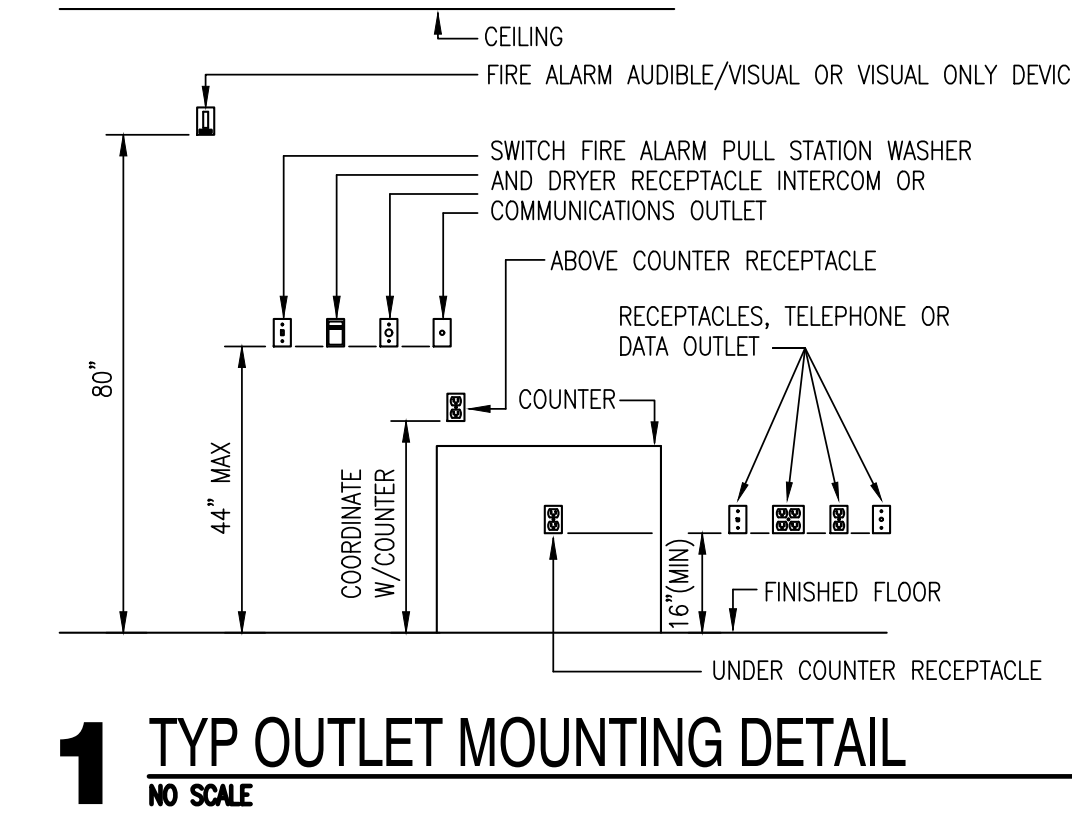
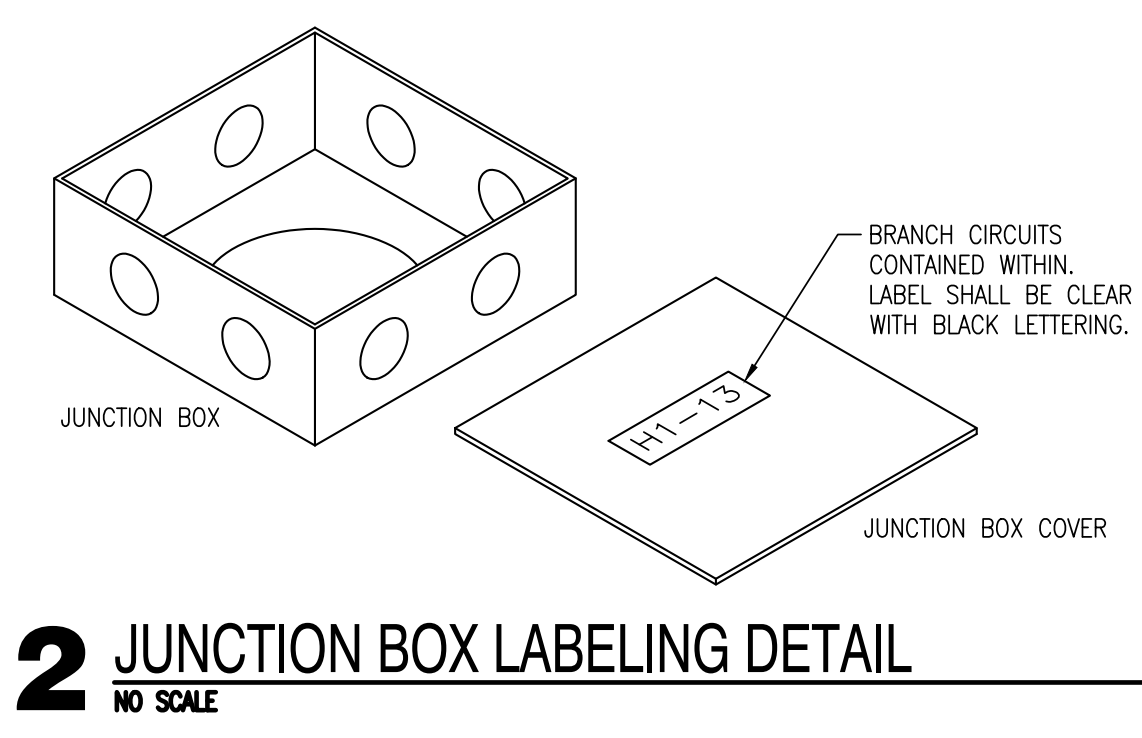
ELECTRICAL ABBREVIATIONS			
AC	ABOVE COUNTERTOP	MC	MECHANICAL CONTRACTOR
AFF	ABOVE FINISH FLOOR	MCA	MINIMUM CIRCUIT AMPS
AFG	ABOVE FINISH GRADE	MDP	MAIN DISTRIBUTION PANEL
ANNC	ANNUNCIATOR	MTD	MOUNTED
CC	CONTROLS CONTRACTOR	NIC	NOT IN CONTRACT
DF	DRINKING FOUNTAIN	OCC	OCCUPANCY
EC	ELECTRICAL CONTRACTOR	PC	PLUMBING CONTRACTOR
EF	EXHAUST FAN	PNL	PANEL
EX	EXISTING	SPST	SINGLE POLE SINGLE THROW
EXR	EXISTING RELOCATED	TTB	TELEPHONE TERMINAL BOARD
GC	GENERAL CONTRACTOR	TYP	TYPICAL
GFI	GROUND FAULT INTERRUPT	WG	WIRE GUARD
HP	HORSEPOWER	WP	WEATHER PROOF
IBC	INTERNATIONAL BUILDING CODE	20A	20 AMP
IG	ISOLATED GROUND	ø	PHASE
LV	LOW VOLTAGE	3W	3 WIRE
LVRP	LV RELAY PANEL	1P20A	SINGLE POLE 20 AMP

ELECTRICAL LEGEND	
	PANEL BOARD
	DISTRIBUTION PANEL BOARD
	TRANSFORMER
	UTILITY METER
	SEPARATE CIRCUIT BREAKER
	DISCONNECT
	FUSED DISCONNECT SWITCH
	EMERGENCY FUSED DISCONNECT SWITCH
	MOTOR STARTER/CONTRACTOR
	COMBINATION MOTOR STARTER
	PUSH BUTTON STATION AS NOTED
	PULL BOX, SIZE AS REQUIRED BY CODE
	ELECTRICAL CONNECTION
	MOTOR CONNECTION
	HOME RUN TO PANEL BOARD

GENERAL ELECTRICAL NOTES	
1.	CONTRACTOR TO VERIFY EXISTING ELECTRICAL CONDITIONS AND NOTIFY ARCHITECT/ENGINEER OF ANY ELECTRICAL OR CODE ISSUES PRIOR TO BID. CONTRACTOR IS RESPONSIBLE FOR PROVIDING A COMPLETE AND OPERATIONAL CODE COMPLIANT SYSTEM.
2.	ALL WORK SHALL BE IN CONFORMANCE WITH NATIONAL, STATE, AND LOCAL CODES AND/OR ORDINANCES.
3.	ELECTRICAL CONTRACTOR SHALL COORDINATE WORK WITH ALL OTHER CONTRACTORS & LOCAL UTILITY. E.C. SHALL CONTACT LOCAL UTILITY FOR EXACT SERVICE REQUIREMENTS TO INCLUDE BUT NOT LIMITED TO TRANSFORMER, METERING AND CABLING. LOCAL UTILITY REQUIREMENTS SUPPERSEDE DRAWINGS AND SPECIFICATIONS.
4.	SEE TECHNOLOGY DRAWINGS FOR ADDITIONAL REQUIREMENTS.
5.	ELECTRICAL DRAWINGS ARE DIAGRAMMATIC ONLY. THEY ARE INTENDED TO GIVE APPROXIMATE LOCATIONS AND OVERALL DESIGN INTENT. THE ELECTRICAL CONTRACTOR SHALL BE RESPONSIBLE FOR PRODUCTS, MATERIALS, AND ELECTRICAL METHODS WHICH HAVE NOT BEEN SHOWN OR INDICATED BUT ARE REQUIRED FOR A COMPLETE SYSTEM TO THE STANDARDS OF THE INDUSTRY.
6.	INSTALL LIGHTING FIXTURES IN ACCORDANCE WITH MANUFACTURER'S RECOMMENDATIONS. PROVIDE SUPPORTING DEVICES FOR ADEQUATE SUPPORT OF FIXTURES FROM STRUCTURE.
7.	UPON COMPLETION OF THE ELECTRICAL WORK, THE INSTALLATION SHALL BE TESTED FOR CONTINUITY, GROUNDS, AND SHORT CIRCUITS. THE ELECTRICAL CONTRACTOR SHALL DEMONSTRATE PROPER PERFORMANCE OF ALL SYSTEMS. ALL DEFECTIVE WORK OR MATERIALS SHALL BE REPLACED OR REPAIRED AS NECESSARY AND RETESTED.
8.	ELECTRICAL RACEWAYS THAT PENETRATE FIRE RATED ASSEMBLIES SHALL BE SLEEVED AND SEALED AS PER THE LOCAL BUILDING CODE.

FIXTURE LINE PHASE STYLES	
LINE STYLE	DESCRIPTION
	EXISTING FIXTURES TO REMAIN
	NEW/REPLACEMENT FIXTURES

ELECTRICAL SHEET INDEX	
E-000	ELECTRICAL TITLE SHEET
E-100	ELECTRICAL SPECIFICATIONS
E-101	ELECTRICAL LIGHTING PLAN



**AGP**  
the Abla Griffin  
Partnership L.L.C.

201 N. BROADWAY  
SUITE 210  
MOORE, OK. 73160  
405.735.3477  
AGP@theAGP.net  
www.theAGP.net

KFC ENGINEERING  
STRUCTURAL

SALAS O'BRIEN  
MECHANICAL / ELECTRICAL



JV  
drawn by  
TVO  
checked by  
JANUARY 2024  
date  
revisions

MOORE PUBLIC SCHOOLS  
BOARD OF EDUCATION  
MOORE, OKLAHOMA

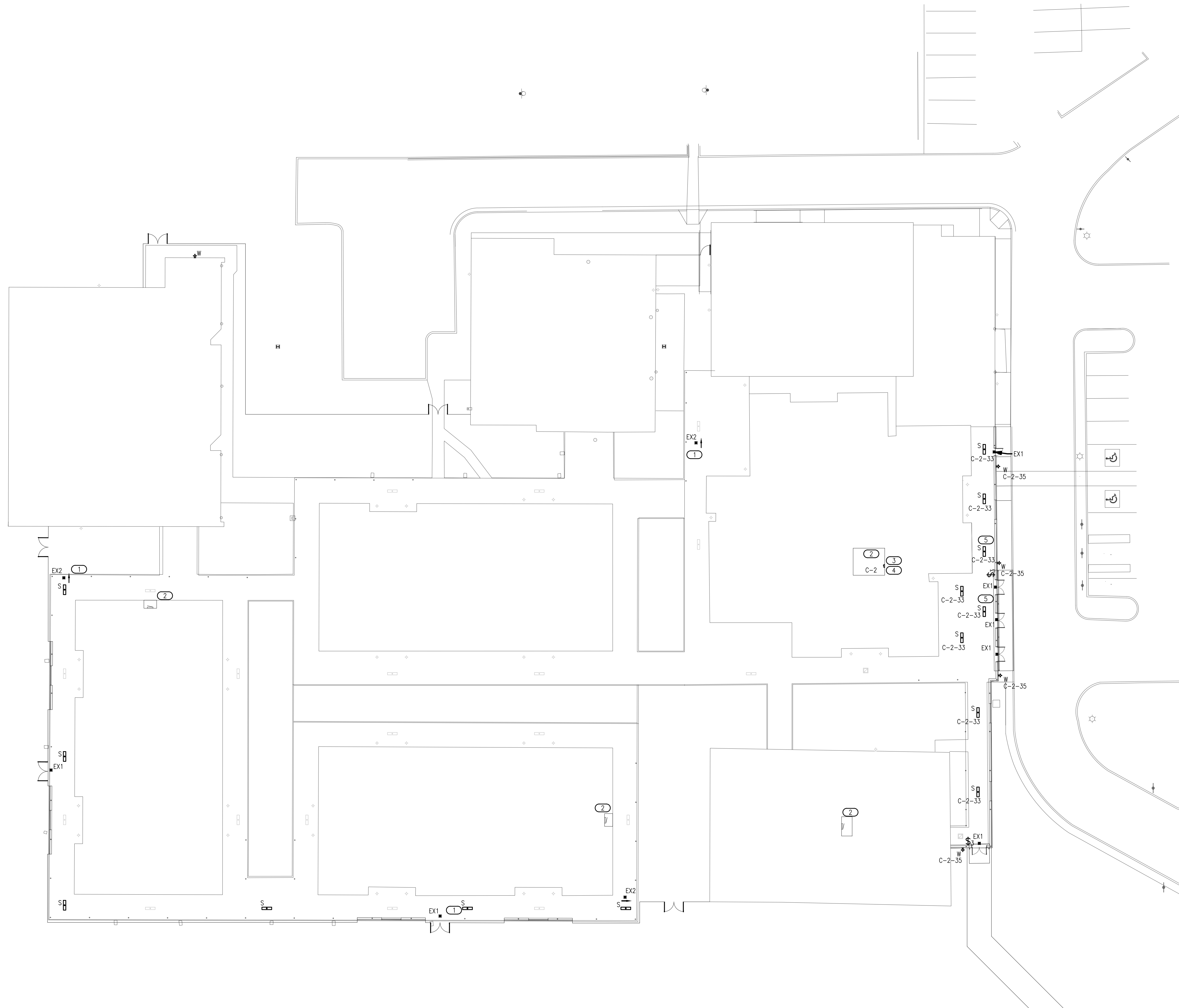


SECURITY UPGRADES  
SANTA FE  
ELEMENTARY SCHOOL

sheet no:  
**E000**

OWNERSHIP USE OF DOCUMENTS:  
AGP EXPRESSLY RESERVES ITS COPYRIGHT AND OTHER PROPERTY RIGHTS OF ALL PLANS AND DRAWINGS DESIGNED AND/OR PRODUCED. PLANS AND DRAWINGS ARE NOT TO BE REPRODUCED IN ANY FORM OR MANNER WITHOUT THE EXPRESSED WRITTEN CONSENT OF AGP.





**LIGHTING GENERAL NOTES**

1. CONNECT BATTERY PACKS TO UNSWITCHED HOT OF LOCAL LIGHTING CIRCUIT.
2. COORDINATE WITH THE ARCHITECT, OWNER, AND ASSOCIATED TRADES FOR THE EXACT HEIGHT/LOCATION OF EXTERIOR MOUNTED LIGHTING FIXTURES PRIOR TO ROUGH-IN.
3. LABEL SWITCH PLATES AND J-BOXES WITH CIRCUIT PER SPECS.
4. ALL NEW DEVICES TO BE GRAY UNLESS OTHERWISE NOTED.
5. ALL NEW LIGHTING TO BE CONNECTED TO EXISTING EXTERIOR LIGHTING CIRCUITS, UNLESS OTHERWISE NOTED IN DRAWINGS. EC TO DETERMINE PEAK LOAD ON PANEL AND REPORT ANY ANOMALIES TO THE ARCHITECT AND ENGINEERING BEFORE PROCEEDING.
6. PROVIDE NEW LIGHTING CONTACTOR. NEW LIGHTS SHALL BE CONTROLLED BY CONTACTOR TO INTERLOCK WITH EXISTING LIGHTING CONTROLS. EC SHALL FIELD INVESTIGATE AND REPORT ANY ANOMALIES TO THE ARCHITECT AND ENGINEER PRIOR TO PROCEEDING.

**KEYED NOTES**

- 1 NEW EXIT SIGN TO BE CEILING MOUNTED AND TO BE PLACED UNDER CANOPY.
- 2 APPROXIMATE LOCATION OF EXISTING PANELS. EC TO FIELD VERIFY EXACT LOCATION AND EXISTING CONDITIONS.
- 3 EC TO PROVIDE NEW 120V CONNECTION FOR NEW WALL PACKS.
- 4 EC TO PROVIDE NEW 120V CONNECTION FOR NEW SURFACE MOUNTED CANOPY LIGHTS.
- 5 EXISTING LIGHT FIXTURE TO BE DEMOLISHED AND REPLACED WITH NEW. EC TO DISCONNECT LIGHTING FIXTURE FROM EXISTING CIRCUIT AND CONNECT TO NEW LIGHTING CIRCUIT.

**AGP**  
the Abila Griffin  
Partnership L.L.C.

201 N. BROADWAY  
SUITE 210  
MOORE, OK. 73160  
405.735.3477  
AGP@theAGP.net  
www.theAGP.net

KFC ENGINEERING  
STRUCTURAL

SALAS O'BRIEN  
MECHANICAL / ELECTRICAL



JV  
drawn by  
TVO  
checked by  
JANUARY 2024  
date  
revisions

MOORE PUBLIC SCHOOLS  
BOARD OF EDUCATION  
MOORE, OKLAHOMA



SECURITY UPGRADES  
SANTA FE  
ELEMENTARY SCHOOL

sheet no:

**E-101**

**1 ELECTRICAL LIGHTING PLAN**  
SCALE: 1"=0' = 20'-0"



OWNERSHIP USE OF DOCUMENTS:  
AGP EXPRESSLY RESERVES ITS  
COPYRIGHT AND OTHER PROPERTY  
RIGHTS OF ALL PLANS AND DRAWINGS  
DESIGNED AND/OR PRODUCED. PLANS  
AND DRAWINGS ARE NOT TO BE  
REPRODUCED IN ANY FORM OR MANNER  
WITHOUT THE EXPRESSED WRITTEN  
CONSENT OF AGP.