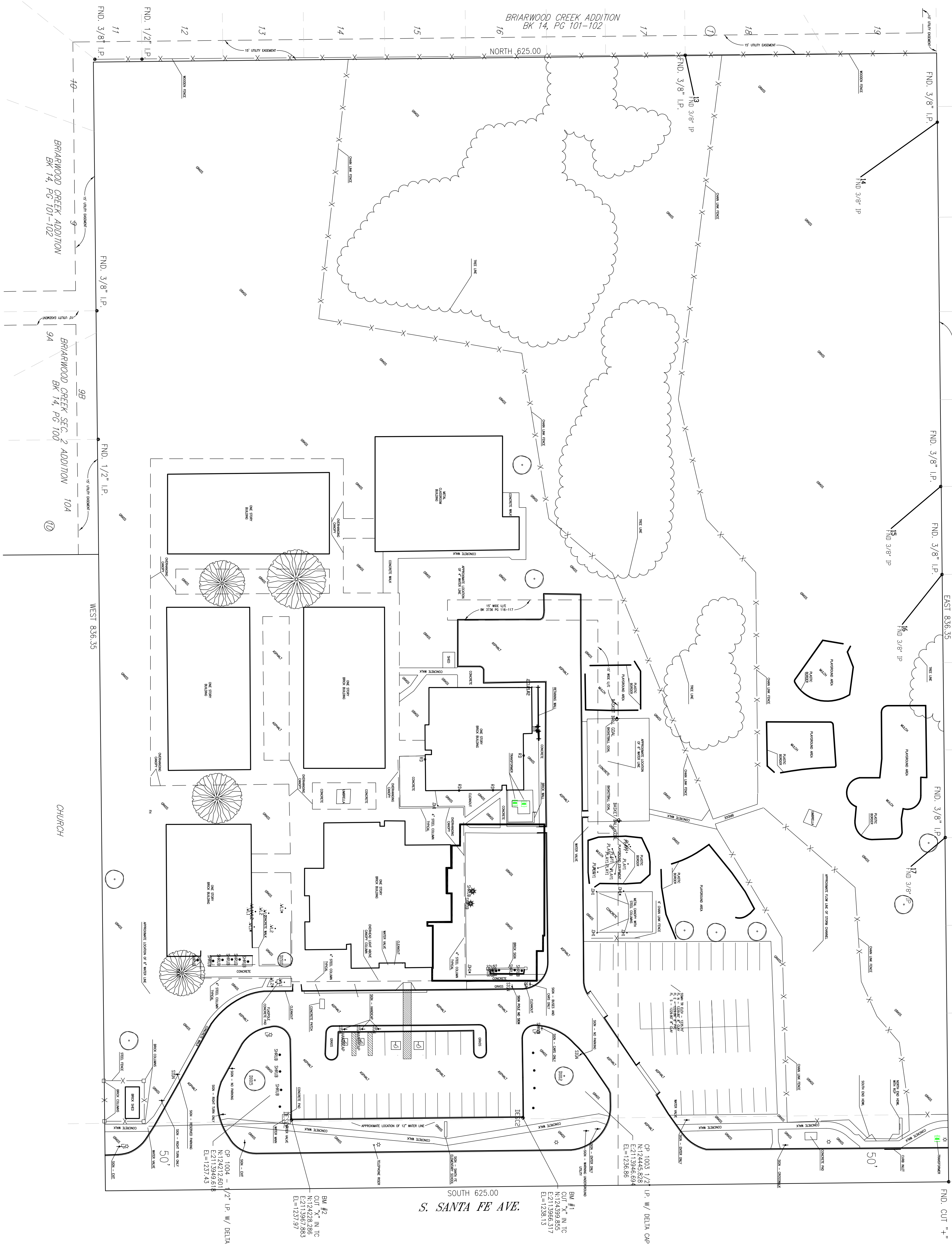


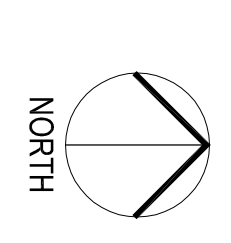
NW 6TH PLACE

12
11
10
9
8
7
6
5
4
3
2
1

GREENBRIAR - EAST LAKE ADDITION
BK 11, PG 13-16



SOUTH 625.00
S. SANTA FE AVE.



EXISTING OVERALL SITE PLAN
1" = 40'-0"



the Abla Griffin
Partnership L.L.C.

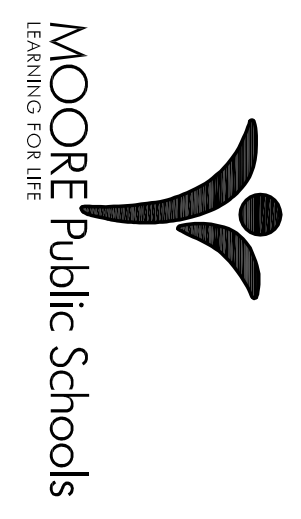
201 N. BROADWAY
SUITE 210
MOORE, OK. 73160
ACGP@theACGP.net
www.theACGP.net

KFC ENGINEERING
STRUCTURAL
SALAS OBRIEN
MECHANICAL ELECTRICAL



CG
drawn by
MA
checked by
FEBRUARY 2024
0818
revisions

MOORE PUBLIC SCHOOLS
BOARD OF EDUCATION
MOORE, OKLAHOMA



SECURITY UPGRADES
SANTA FE
ELEMENTARY SCHOOL

C100

OWNERSHIP USE OF DOCUMENTS:
ACGP EXPRESSLY RESERVES ITS
COPYRIGHT AND OTHER PROPERTY
RIGHTS OF ALL PLANS AND DRAWINGS
DESIGNED AND/OR PRODUCED HEREIN.
REPRODUCTION IN ANY FORM OR MANNER
WITHOUT THE EXPRESSED WRITTEN
CONSENT OF ACP.