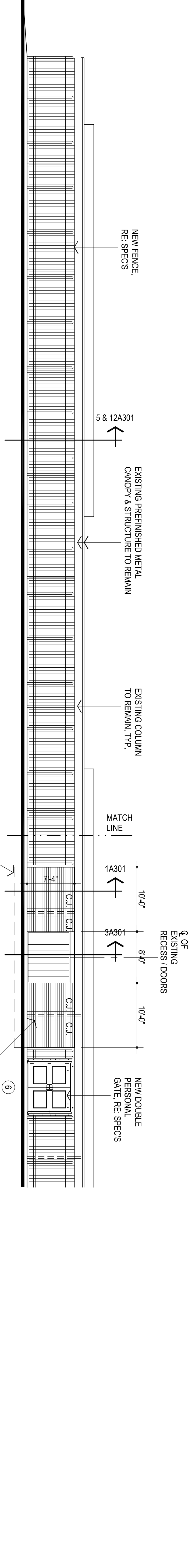
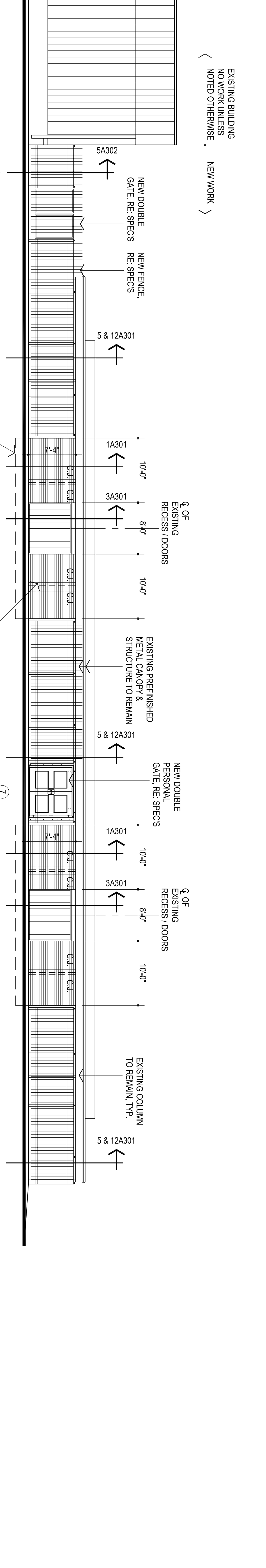


1 EAST ELEVATION
1/8" = 1'-0"

2 SOUTH ELEVATION
1/8" = 1'-0"



2 SOUTH ELEVATION - CONT.
1/8" = 1'-0"



3 WEST ELEVATION
1/8" = 1'-0"

AGP
the Abla Griffin Partnership L.L.C.
201 N. BROADWAY
SUITE 210
MOORE, OK, 73160
405.735.3477
AGP@theAGP.net
www.theAGP.net

KFC ENGINEERING
STRUCTURAL
SALAS OBRIEN
MECHANICAL ELECTRICAL

STATE OF OKLAHOMA
MICHAEL L. ABELA
2839
REGISTERED PROFESSIONAL ARCHITECT
EXPIRES 12/31/24
2/13/24

CG
designed by
MA
checked by
FEBRUARY 2024
date
revisions

MOORE PUBLIC SCHOOLS
BOARD OF EDUCATION
MOORE, OKLAHOMA
MOORE Public Schools
LEARNING FOR LIFE

SECURITY UPGRADES
SANTA FE
ELEMENTARY SCHOOL

Sheet No.
A201

OWNERSHIP USE OF DOCUMENTS:
AGP EXPRESSLY RESERVES ITS COPYRIGHT AND OTHER PROPERTY RIGHTS OF ALL PLANS AND DRAWINGS DESIGNED AND/OR PRODUCED HEREIN. THIS DOCUMENT IS NOT TO BE REPRODUCED IN ANY FORM OR MANNER WITHOUT THE EXPRESSED WRITTEN CONSENT OF AGP.