



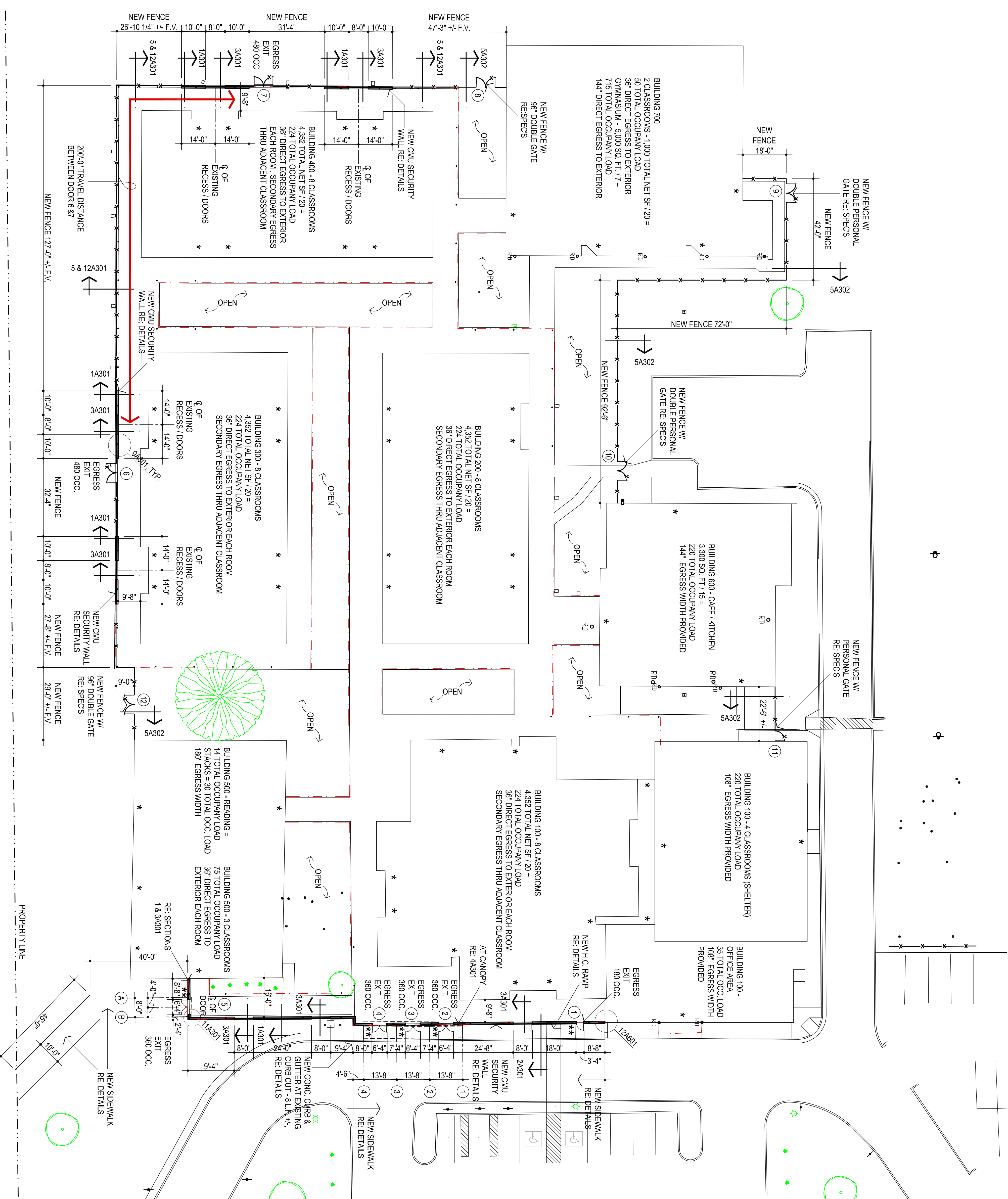
CONSTRUCTION DATA (TABLE 503):
OCCUPANCY - E
CONSTRUCTION TYPE - TYPE II - B
BASIC ALLOWABLE AREA - 58,000 S.F. PER FLOOR
ALLOWABLE STORES - 3
ACTUAL STORES - 1
ACTUAL HEIGHT - 16'-3"

STRUCTURAL FIRE PROTECTION (TABLE 801):
EXTERIOR BEARING WALLS 0 HOUR NONCOMBUSTIBLE
INTERIOR BEARING WALLS NONCOMBUSTIBLE
EXTERIOR NONBEARING WALLS NONCOMBUSTIBLE
COLUMNS 0 HOUR NONCOMBUSTIBLE
BEAMS 0 HOUR NONCOMBUSTIBLE
PERMANENT PARTITIONS NONCOMBUSTIBLE
FLOOR ASSEMBLIES 0 HOUR
ROOF ASSEMBLIES 0 HOUR
EXTERIOR OPENINGS N/A

PASSIVE FIRE SAFETY SYSTEM:
PORTABLE FIRE EXTINGUISHERS
TRAVEL DISTANCE = 200'-0" MAX.
DEADEND - 25'-0" MAX.
ACTUAL DEADEND - NONE

ACTIVE FIRE SAFETY SYSTEMS:
FIRE ALARM SYSTEM
SMOKE DETECTION
AUTOMATIC AIR HANDLING EQUIP SHUTDOWN
EXIT LIGHT EMERGENCY LIGHTS BATTERY

CODES/REGULATIONS USED (CITY OF OKLAHOMA CITY):
2015 IBC - INTERNATIONAL BUILDING CODE
AMERICAN WITH DISABILITIES ACT ACCESSIBILITY GUIDELINES
2017 NATIONAL ELECTRICAL CODE
2015 INTERNATIONAL PLUMBING CODE
2015 INTERNATIONAL MECHANICAL CODE
2015 INTERNATIONAL FIRE CODE
2009 ENERGY CONSERVATION CODE
2009 ANSI
ASSOCIATED SUPPLEMENTS TO EACH CODE



SITE PLAN
1" = 20'-0"

LEGEND:
* INDICATES EXISTING EXITS FROM BUILDINGS
** INDICATES LOCATION OF NEW SIGNAGE PLAQUES RE: SHEET A801