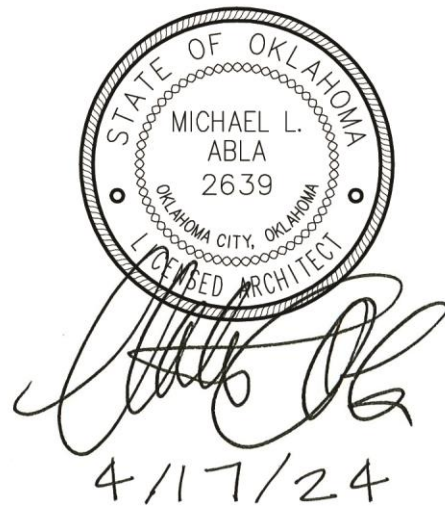


**MOORE PUBLIC SCHOOLS -
SANTA FE ELEMENTARY
SECURITY UPGRADES**

Moore Public Schools - Moore, Oklahoma
AGP - Moore, Oklahoma

ADDENDUM NO. 1

April 17, 2024



This addendum is applicable to work designated herein, shall be understood to be an Addendum, and as such shall be included in the Contract Agreement.

Receipt of this Addendum shall be acknowledged by the Construction Management Firm notifying this office in writing, and by any applicable subcontractor to the CM.

This addendum consists of two (2) pages with attachments of eleven (11) 8.5"x11" pages and three (3) 24"x36" sheets.

A. Drawings:

Civil and Structural

No changes.

Architectural

1. Sheet A100, Detail 1, Site Plan: added gate notations / references. Refer to attachment.
2. Sheet A201, Details 2, 3 and 4, South Elevation, West Elevation, and Typical Security Gate Detail: added gate directional signage / security gate information for gates 9, 10, and 11 / new canopy location, etc. at Door #5. Refer to attachment.

Mechanical, Electrical, Plumbing, and Technology

1. Refer to attachments.

B. Specifications:

1. Section 07427 – Composite Wall Panels: add section in its entirety. Refer to attachment.

2. Section 10400 – Interior Signage: add section in its entirety. Refer to attachment.
3. Section 323119 Fences and Gates: clarification – fencing system shall be as specified - Montage II Industrial Ornamental Steel Fence with Invincible or Classic style depending on location and height of fence, refer Drawings. Color of fencing and gates to be Black. At gates 6, 7, 9, 10, and 11 provide Exodus Egress All-In-One Pedestrian Gate System with 1" picket / expanded metal infill and manufacturer's hardware except for cylinders and cores as per Moore Public Schools' requirements (Schlage 20-740 Primus Core with applicable cylinder) COORDINATE WITH OWNER'S HARDWARE REPRESENTATIVE. Refer to Technology Drawings for card reader, door contacts, etc. information.

Gates 8 and 12 to be Transport II Engineered Cantilever Gates and black in color. Provide standard hardware with locking capabilities.

END OF ADDENDUM NO. 1

PASSIVE FIRE SAFETY SYSTEM:
PORTABLE FIRE EXTINGUISHERS
TRAVEL DISTANCE = 200'-0" MAX.
DEADEND - 25'-0" MAX.
ACTUAL DEADEND - NONE

ACTIVE FIRE SAFETY SYSTEMS:
FIRE ALARM SYSTEM
SMOKE DETECTION
AUTOMATIC AIR HANDLING EQUIP. SHUTDOWN
EXIT LIGHTS/EMERGENCY LIGHTS BATTERY

CODES/REGULATIONS USED (CITY OF OKLAHOMA CITY):
2015 IBC - INTERNATIONAL BUILDING CODE
AMERICAN WITH DISABILITIES ACT ACCESSIBILITY GUIDELINES
2017 NATIONAL ELECTRICAL CODE
2015 INTERNATIONAL PLUMBING CODE
2015 INTERNATIONAL MECHANICAL CODE
2015 INTERNATIONAL FIRE CODE
2009 ENERGY CONSERVATION CODE
2009 ANSI
ASSOCIATED SUPPLEMENTS TO EACH CODE

CONSTRUCTION DATA (TABLE 503):

OCCUPANCY -	E
CONSTRUCTION TYPE -	TYPE II - B
BASIC ALLOWABLE AREA -	58,000 S.F. PER FLOOR
ALLOWABLE STORIES -	3
ACTUAL STORIES -	1
ACTUAL HEIGHT -	16'-8"

STRUCTURAL FIRE PROTECTION (TABLE 601):

EXTERIOR BEARING WALLS	0 HOUR
INTERIOR BEARING WALLS	NONCOMBUSTIBLE
EXTERIOR NONBEARING WALLS	NONCOMBUSTIBLE
COLUMNS	0 HOUR
BEAMS	0 HOUR
PERMANENT PARTITIONS	NONCOMBUSTIBLE
FLOOR ASSEMBLIES	0 HOUR
ROOF ASSEMBLIES	0 HOUR
EXTERIOR OPENINGS	N/A



CG
drawn by
MA
checked by
FEBRUARY 2024
date

revisions
1 ADDENDUM #1

MOORE PUBLIC SCHOOLS
BOARD OF EDUCATION
MOORE, OKLAHOMA



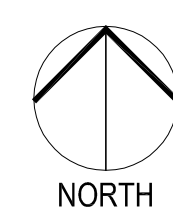
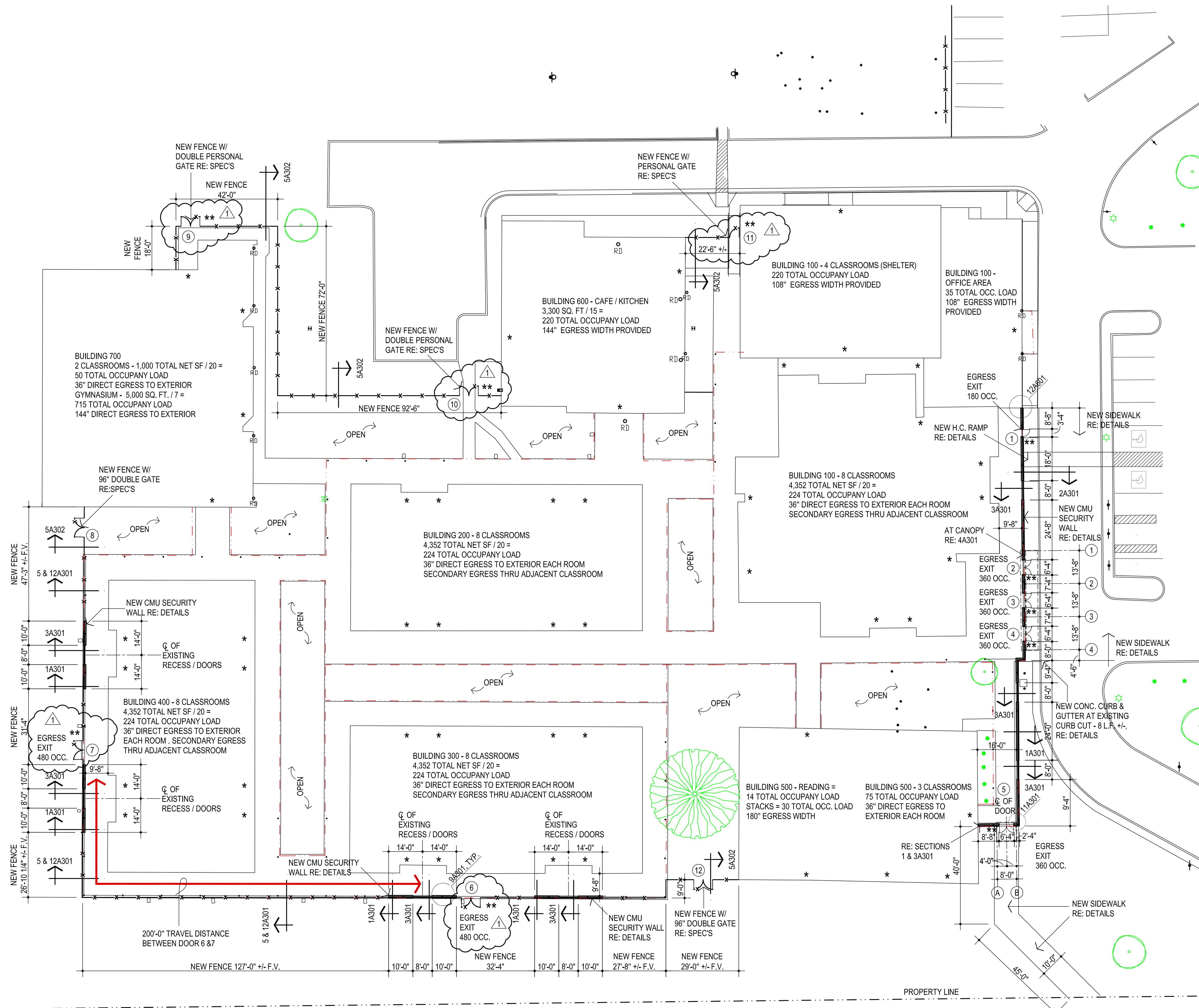
SECURITY UPGRADES
SANTA FE
ELEMENTARY SCHOOL

Sheet no:

A100

OWNERSHIP USE OF DOCUMENTS:

AGP EXPRESSLY RESERVES ITS
COPYRIGHT AND OTHER PROPERTY
RIGHTS OF ALL PLANS AND DRAWINGS
DESIGNED AND/OR PRODUCED. PLANS
AND DRAWINGS ARE NOT TO BE
REPRODUCED IN ANY FORM OR MANNER
WITHOUT THE EXPRESSED WRITTEN
CONSENT OF AGP.



1 SITE PLAN
1" = 20'-0"

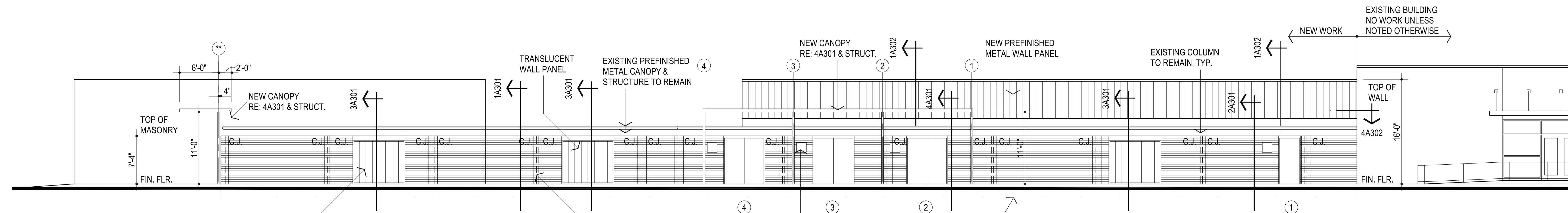
LEGEND:
* INDICATES EXISTING EXITS FROM BUILDINGS
** INDICATES LOCATION OF NEW SIGNAGE PLAQUES, RE: SHEET A601



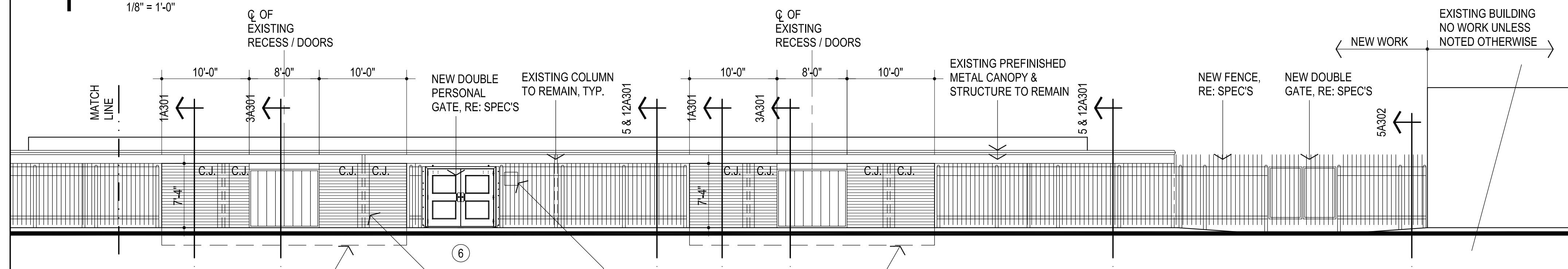
CG	drawn by
MA	checked by
FEBRUARY 2024	date
revisions	
1	ADDENDUM #1



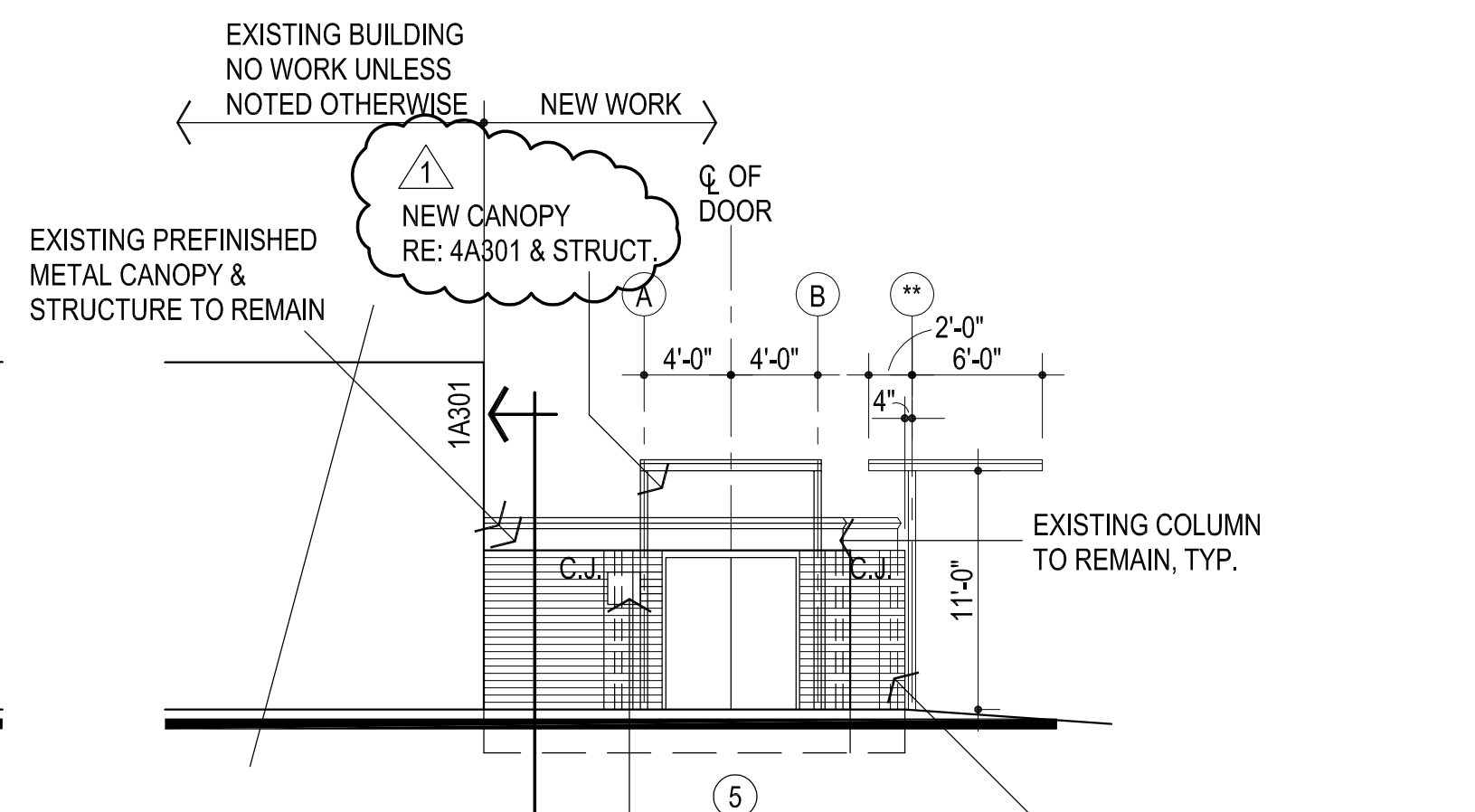
sheet no:



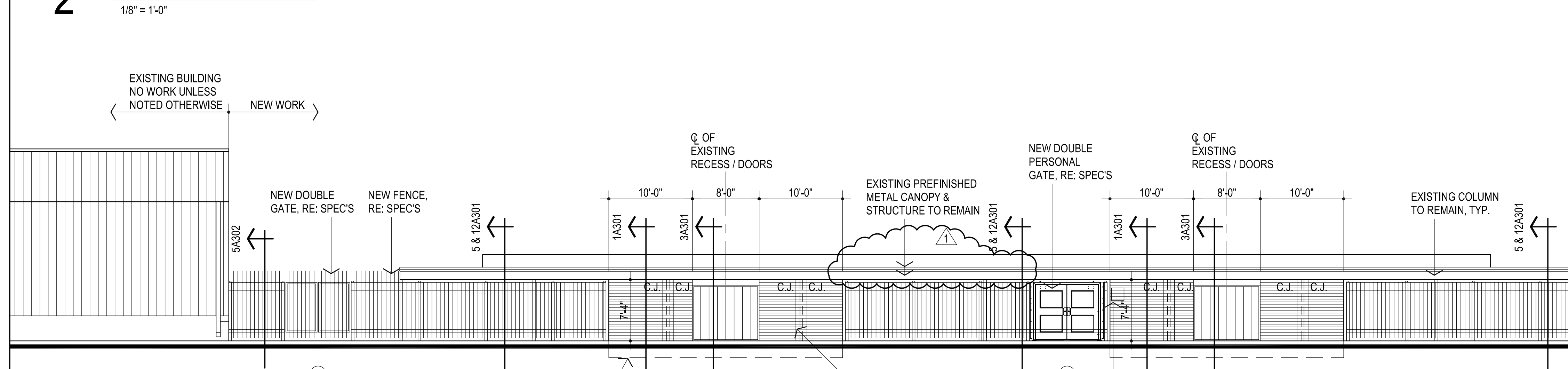
1 EAST ELEVATION
1/8" = 1'-0"



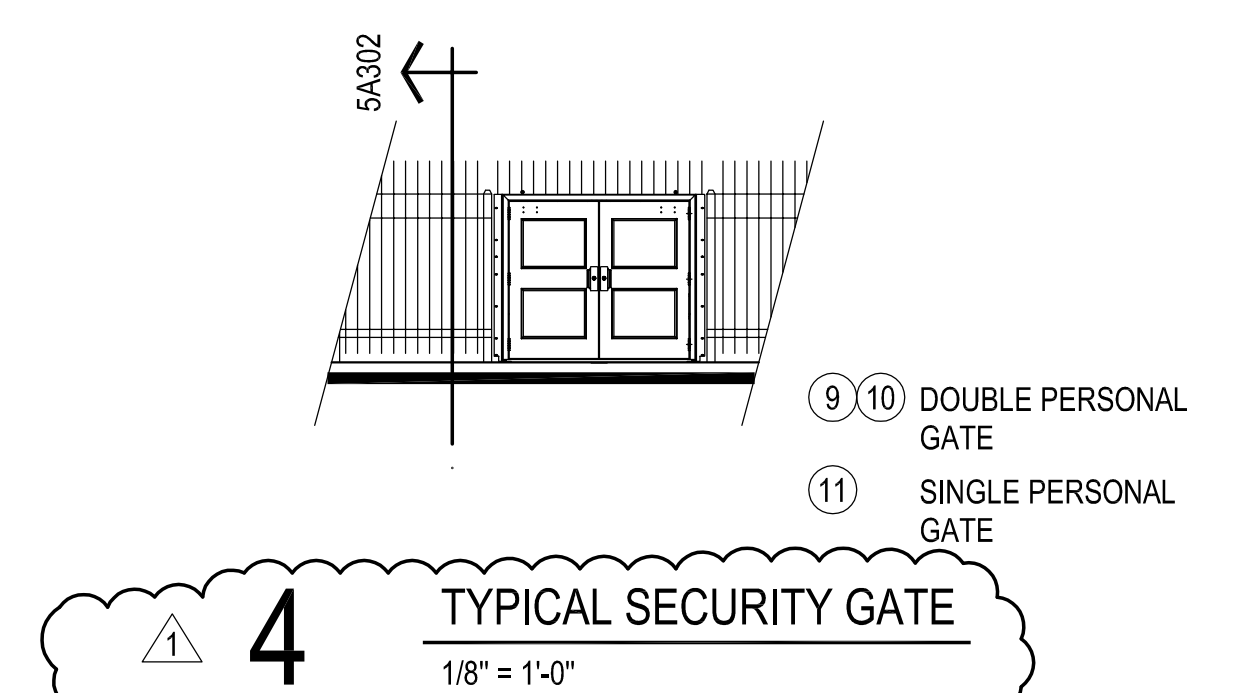
2 SOUTH ELEVATION
1/8" = 1'-0"



2 SOUTH ELEVATION - CONT.
1/8" = 1'-0"



3 WEST ELEVATION
1/8" = 1'-0"



4 TYPICAL SECURITY GATE
1/8" = 1'-0"

ADDENDUM No. 1

Client: Abla Griffin Partnership
Project Name: Santa Fe Elem Security Upgrades
Project Location: Moore, OK

Issue Date: April 12, 2024

Owner: Moore Public Schools
Engineer: Salas O'Brien

Project No. 2024-00668-00**To: Prospective Bidders.**

This Addendum forms a part of the Contract Documents and modifies the Bidding Documents dated February 22, 2024, (and previous addenda), with amendments and additions noted below. This Addendum consists of (1) pages and (1) attachments.

Index of Attachments:
T-201

Acknowledge receipt of this Addendum in the space provided on the Bid Form. Failure to do so may disqualify Bidder.

CHANGES TO THE DRAWINGS

Revisions have been made to the following drawings and are issued in the form of full-size plans. Edits are indicated by a revision delta and a cloud surrounding the affected portion of the drawing.

- **SHEET T-201**
 - Refer to clouds and deltas for drawing change.

END OF ADDENDUM 01

2 DOOR 4 ENLARGED
SCALE: 1'-0" = 1/2"

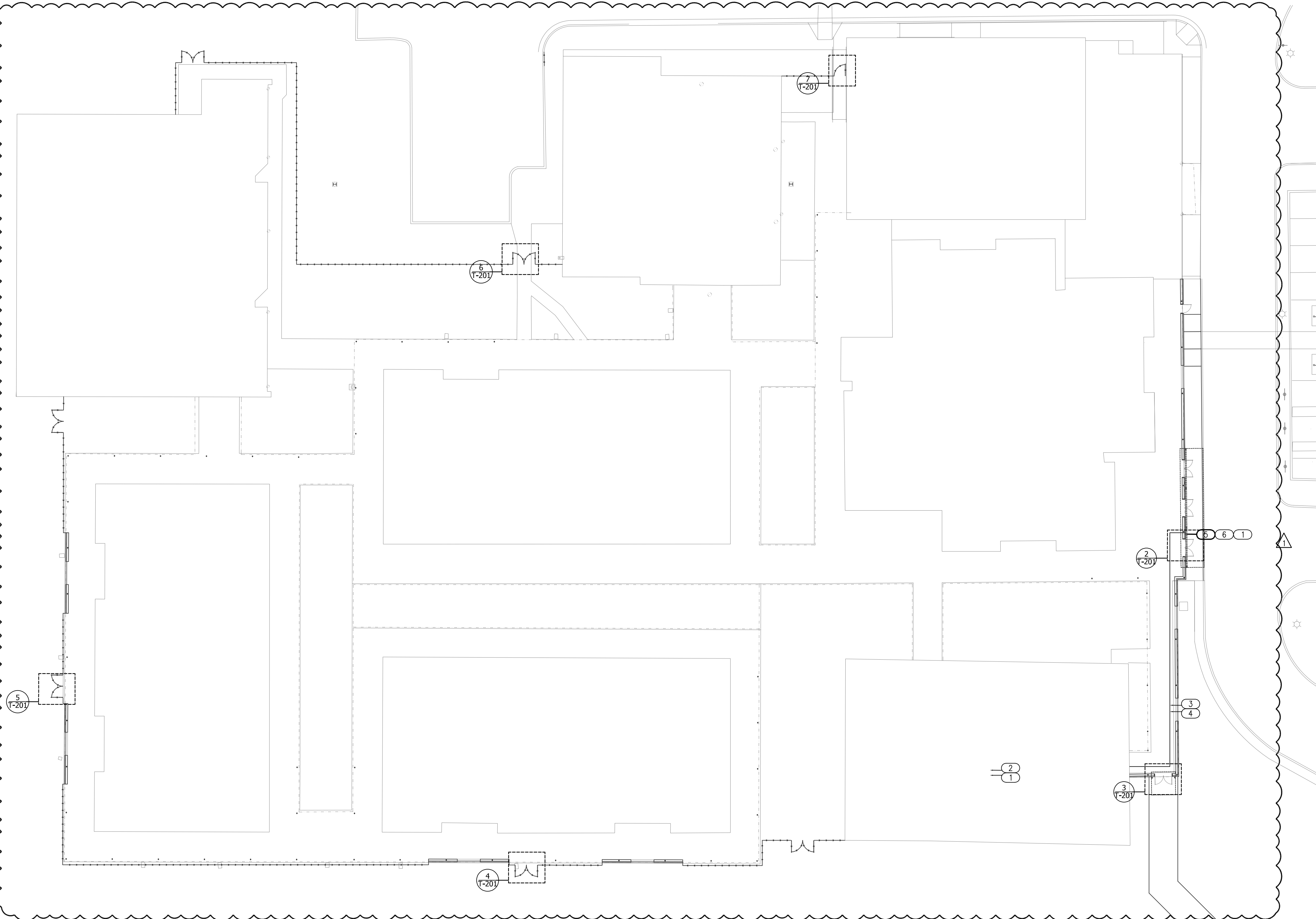
3 DOOR 5 ENLARGED
SCALE: 1'-0" = 1/2"

4 GATE 6 ENLARGED
SCALE: 1'-0" = 1/2"

5 GATE 7 ENLARGED
SCALE: 1'-0" = 1/2"

6 GATE 10 ENLARGED
SCALE: 1'-0" = 1/2"

7 GATE 11 ENLARGED
SCALE: 1'-0" = 1/2"



- GENERAL NOTES**
- A. COORDINATE ALL FINAL MOUNTING HEIGHTS, FOR WALL MOUNTED DEVICES, PRIOR TO ROUGH-IN. COORDINATE WITH ARCHITECT, OWNER AND ENGINEER.
 - B. REFERENCE TECHNOLOGY PLANS, NOTES & LEGENDS AND ELECTRICAL PLANS FOR ADDITIONAL INFORMATION AND DEVICE/OUTLET LOCATIONS.
 - C. ALL ACCESS CONTROL AND INTRUSION DEVICES SHALL CONNECT TO THE NEAREST ACCESS CONTROL/INTRUSION DETECTION PANELS. CONTRACTOR TO PROVIDE ALL NECESSARY CONDUITS.

- KEYED NOTES**
- 1 INSTALL CUSTOMER PROVIDED VIDEO DOORBELL SYSTEM MONITOR. CONTACT JACK PHILLIPS FOR MOUNTING LOCATIONS. 405-473-5225.
 - 2 1-18 GAUGE 2 CONDUCTOR CABLE RUN TO NEAREST POWER OUTLET.
 - 3 CONDUIT SHALL CONTAIN:
(1) CAT 6 BETWEEN DOOR STATION AND MONITOR
(1) CAT 6 BETWEEN DOOR STATION AND MEDIA IDF ROOM.
 - 4 CONTRACTOR TO PROVIDE 1-1" CONDUIT.
 - 5 1-18 GAUGE 4 CONDUCTOR NON SHIELDED CABLE RUN TO ACCESS CONTROLLER.
 - 6 SINGLE GANG JUNCTION BOX INSTALLED 48" AFF ON CENTER.

NY
drawn by
NY
checked by
JANUARY 2024
date
04/12/24 ADDENDUM 1
revisions

MOORE PUBLIC SCHOOLS
BOARD OF EDUCATION
MOORE, OKLAHOMA

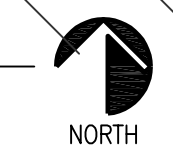


SECURITY UPGRADES
SANTA FE
ELEMENTARY SCHOOL

sheet no:
T-201

OWNERSHIP USE OF DOCUMENTS:
AGP EXPRESSLY RESERVES ITS COPYRIGHT AND OTHER PROPERTY RIGHTS OF ALL PLANS AND DRAWINGS DESIGNED AND/OR PRODUCED. PLANS AND DRAWINGS ARE NOT TO BE REPRODUCED IN ANY FORM OR MANNER WITHOUT THE EXPRESSED WRITTEN CONSENT OF AGP.

1 TECHNOLOGY PLAN
SCALE: 1'-0" = 20'-0"



DIVISION 7 - THERMAL & MOISTURE PROTECTION

SECTION 07424 - COMPOSITE WALL PANELS

PART 1 General

1.1 Work Included:

- A. Aluminum-faced composite panels, attachments, and sealants.

1.2 Related Sections:

- A. Section 05400 - Cold Formed Metal Framing.
- B. Section 06100 - Rough Carpentry.
- C. Section 07600 - Flashing and Sheet Metal.
- D. Section 07900 - Sealants.

1.3 References:

- A. American Society for Testing and Materials (ASTM) B209 - Aluminum and Aluminum-Alloy Sheet and Plate.
- B. American Society for Testing and Materials (ASTM) C481 - Laboratory Aging of Sandwich Constructions.
- C. American Society for Testing and Materials (ASTM) E72 - Standard Test Methods of Conducting Strength Tests of Panels for Building Construction.
- D. American Society for Testing and Materials (ASTM) E84 - Surface Burning Characteristics of Building Materials.
- E. American Society for Testing and Materials (ASTM) E289 - Linear Thermal Expansion of Rigid Solids with Interferometry.
- F. American Society for Testing and Materials (ASTM) E331 - Water Penetration for Exterior Windows, Curtain Walls, and Doors.
- G. American Society for Testing and Materials (ASTM) D1781 - Climbing Drum Peel for Adhesives.
- H. American Architectural Manufacturers Association (AAMA) 501 - Water Penetration using Dynamic Pressure.
- I. American Architectural Manufacturers Association (AAMA) 605.2 - Voluntary Specification for High

DIVISION 7 - THERMAL & MOISTURE PROTECTION

SECTION 07424 - COMPOSITE WALL PANELS

Performance Organic Coatings on Architectural Extrusions and Panels.

- J. American Architectural Manufacturers Association (AAMA) TIR-a11 - Maximum Allowable Deflection of Framing Systems for Building Cladding Components at Design Wind Loads.

1.4 System Description:

A. Design Requirements:

1. Design system to accommodate movement of components without buckling, failure of joint seals, undue stress on fasteners, or other detrimental effects when subjected to temperature and humidity ranges reasonably anticipated.
2. Design system to accommodate tolerances of structure.

B. Performance Requirements:

1. Submit test data witnessed by an independent testing agency for the following requirements:
 - a. Structural tests for wind loads by "Chamber Method" in compliance with ASTM E72.
 - 1) Standard test design loading: 20 psf (960 Pa) positive and negative wind load.
 - 2) Design panel system to withstand code imposed design loads and a deflection limit of L/180 shall apply to positive load pressures only.
 - 3) Design panel system to withstand code imposed design loads and a deflection limit of L/175 shall apply to positive load pressures only.
 - b. Air Infiltration: 0.06 cfm per square foot (32 lps per square meter) air leakage under a static pressure of 1.56 psf (7.65 kg per square meter) when tested in accordance with ASTM E283.
 - c. Water Penetration: No uncontrolled water penetration through the standard vertical panel and sealed joints at a static pressure of 6.24 psf (30.5 kg per square meter) when tested in accordance with ASTM E331.

DIVISION 7 - THERMAL & MOISTURE PROTECTION

SECTION 07424 - COMPOSITE WALL PANELS

1.5 Submittals:

- A. Submit as directed below and as per the Special Conditions.
- B. Manufacturer's data sheets on each product to be used, including:
 - 1. Preparation instructions and recommendations.
 - 2. Storage and handling requirements and recommendations.
 - 3. Installation methods.
- C. Shop Drawings: Submit shop drawings showing layout, flashings, drainage, ventilation, vapor barriers, vapor retarders, profiles and product components, including anchorage, accessories, finish colors, patterns, and textures.
- D. Selection Samples: For each finish product specified, two complete sets of color chips representing manufacturer's full range of available colors and patterns.
- E. Verification Samples: For each finish product specified, two samples, minimum size 3 inches (76 mm) by 5 inches (128 mm) representing actual product, color, and patterns.
- F. Quality Assurance Submittals: Submit the following:
 - 1. Test reports: Certified test reports showing compliance with specified performance characteristics and physical properties.
 - 2. Certificates: Product certificates signed by manufacturer certifying materials comply with specified performance characteristics and criteria, and physical requirements.

1.6 Quality Assurance:

- A. Manufacturer Qualifications: Manufacturer capable of providing field service representation during construction, approving acceptable installer and approving application method.
- B. Installer Qualifications:
 - 1. Installer experienced in performing work of this section who has specialized in

DIVISION 7 - THERMAL & MOISTURE PROTECTION

SECTION 07424 - COMPOSITE WALL PANELS

installation of work similar to that required for this project.

2. Panel Installer shall assume responsibility for all components of the exterior panel system including, but not limited to attachment to sub-construction, panel to panel joinery, panel to dissimilar material joinery, and joint seal associated with the panel system.

- C. Pre-installation Meetings: Conduct pre-installation meeting to verify project requirements, substrate conditions, manufacturer's installation instructions, and manufacturer's warranty requirements.

1.7 Delivery, Storage, and Handling:

- A. Store panels horizontally, off-the-ground, in manufacturer's unopened packaging until ready for installation.
- B. Examine delivered materials upon receipt to ensure that no damage has occurred during shipment. Store metal-faced composite wall panels horizontally, covered with a suitable weather tight and ventilated covering. Store metal-faced composite wall panels to ensure dryness, with a positive slope for drainage of water. Do not store metal-faced composite wall panels in contact with other materials that might cause staining, denting, or other surface damage. DO NOT allow storage space to exceed 120 degrees F (49 degrees C).
- C. Store and dispose of solvent-based materials, and materials used with solvent-based materials, in accordance with requirements of local authorities having jurisdiction.

1.8 Project Conditions:

- A. Maintain environmental conditions (temperature, humidity, and ventilation) within limits recommended by manufacturer for optimum results. Do not install products under environmental conditions outside manufacturer's absolute limits.

DIVISION 7 - THERMAL & MOISTURE PROTECTION

SECTION 07424 - COMPOSITE WALL PANELS

1.9 Warranty:

- A. Finish Warranty: Commencing on Date of Substantial Completion.
 - 1. Provide 20-year written warranty with PVDF/KYNAR 500 finish color coated metal finish covering color fading, chalking, and film integrity.
 - 2. Finish coating shall not peel, blister, chip, crack or check.
 - 3. Chalking, fading or erosion of finish measured by the following tests:
 - a. Finish coating shall not chalk in excess of 8 numerical ratings when measured in accordance with ASTM D659.
 - b. Finish coating shall not change color or fade in excess of 8 NBS units as determined by ASTM D2244.
- B. Material and Installation Warranty: Commencing on Date of Substantial Completion.
 - 1. When installed as directed by Laminators Incorporated, panels covered by this warranty are warranted not to delaminate (separate) at any Laminators produced glue line for a period of five years.

PART 2 PRODUCTS

2.1 Manufacturers:

- A. Acceptable Manufacturer: Laminators Incorporated; 3255 Penn St., Hatfield, PA 19440. ASD. Tel: (215)723-8107. Toll Free: (877) OMEGA77. Fax: (215) 721-1239. Web: <http://www.laminatorsinc.com>
- B. Substitutions: as approved by Architect.
- C. Requests for substitutions will be considered in accordance with provisions of the Project Manual.

2.2 Omega-Lite Aluminum-Faced Composite Panels:

- A. Omega-Lite Composite Panels as manufactured by Laminators Incorporated.
 - 1. Panel Construction: Finished aluminum sheet over a corrugated polyallomer (CPA) core with backer sheet.

DIVISION 7 - THERMAL & MOISTURE PROTECTION

SECTION 07424 - COMPOSITE WALL PANELS

2. Panel Facing:
 - a. Smooth face, minimum 0.021 inch (0.53 mm) thick, ASTM B209 aluminum sheet
3. Panel Backing:
 - a. Random painted aluminum sheet, minimum 0.013 inch (0.33 mm) thick, ASTM B209 aluminum sheet
4. Panel Thickness: 6 mm (1/4 inch)
5. Fire Test Performance: ASTM E84: Class A.
6. Bond Test Performance: ASTM C481-A Cyclic Aging: Pass.
7. Finish:
 - a. PVDF/Kynar 500 - 20-year warranty paint system meeting AAMA 2605
8. Finish Colors: Refer Room Finish Schedule included in the Drawings.

B. Aluminum Composite Panel Installation System:

1. Installation:
 - a. 1-Piece Tight-Fit Extrusion (6 mm only)
 - b. "H"-Molding 4505X
 - c. Provide corner, drip edge, etc. trim as required for complete and watertight installation.

2.3 Accessories:

- A. Manufacturer's Sealants and Accessories: Provide manufacturer's recommended sealants and accessories for product installation.
- B. Flashing: Fabricate flashing materials from 0.030 inch (0.76 mm) minimum thickness aluminum sheet painted to match the adjacent curtain wall/panel system where exposed. Provide a 12 inch (305 mm) wide lap strap under the flashing at abutted conditions and seal lapped surfaces with a full bed of non-hardening sealant.

2.4 Fabrication:

- A. Panels shall be fabricated and finished as required to provide material construction and performance as specified and as required by manufacturer to comply with warranty provisions.
 1. Tolerances: Length and Width: plus or minus 1/16 inch (1.6mm). Squareness (Diagonals): equal within 1/8 inch (3.2mm).

DIVISION 7 - THERMAL & MOISTURE PROTECTION

SECTION 07424 - COMPOSITE WALL PANELS

PART 3 EXECUTION

3.1 Examination:

- A. Do not begin installation until substrates have been properly prepared.
- B. Examine substrates, areas, and conditions, with substrate installer present, for compliance with requirements for structural soundness, installation tolerances, metal panel supports, and other conditions affecting performance of work.
 - 1. Examine primary and secondary wall framing to verify that girts, angles, channels, studs, and other structural panel support members and anchorage have been installed within alignment tolerances listed below.
 - a. 1/4 inch (6 mm) in any 20 feet (6 m) length vertically or horizontally.
 - b. 1/2 inch (12 mm) in any building elevation.
 - 2. Examine solid wall sheathing to verify that sheathing joints are supported by framing or blocking and that installation is within flatness tolerances required.
 - 3. For the record, prepare written report, endorsed by panel installer and substrate installer, listing remedy for conditions detrimental to performance of work.
- C. Examine roughing-in for components and systems penetrating metal panels to verify actual locations of penetrations relative to seam locations of metal panels before metal panel installation.
- D. Proceed with installation only after all unsatisfactory conditions have been corrected.
- E. If substrate preparation is the responsibility of another installer, notify Architect of unsatisfactory preparation before proceeding.

3.2 Installation:

- A. Comply with manufacturer's installation guides and Product Data, including product technical bulletins, product catalog installation instructions, and product carton instructions for installation type selected.

DIVISION 7 - THERMAL & MOISTURE PROTECTION

SECTION 07424 - COMPOSITE WALL PANELS

B. Work shall be done and completed in a thorough and workmanlike manner by mechanics skilled in their various trades.

C. Caulk Installation:

1. Use only approved sealants as described in Laminators Incorporated Installation Guidelines.
2. The sealant manufacturer's instructions shall be followed in preparing and installing sealants.
3. Joints to receive sealant shall be clean, dry and free from dust, grit and contaminants.
4. The sealant shall completely fill the glazing pockets.

3.3 Field Quality Control:

A. Manufacturer's Field Services: Upon Owner's request, provide manufacturer's field service consisting of product use recommendations and periodic site visit for inspection of product installation in accordance with manufacturer's instructions.

3.4 Cleaning and Protection:

A. Protection: Protect installed product and finish surfaces from damage during construction.

B. Cleaning: Remove temporary coverings and protection of adjacent work areas. Repair or replace damaged installed products. Clean installed products in accordance with manufacturer's instructions prior to owner's acceptance. Remove construction debris from project site and legally dispose of debris.

C. Protect installed products until completion of project.

D. Touch-up, repair or replace damaged products before Substantial Completion.

End of Section

DIVISION 10 - SPECIALTIES

SECTION 10400 - INTERIOR SIGNAGE

Part 1 - General

1.01 Work Included:

- A. All materials, labor, services and incidentals necessary for the completion of this entire section of the work.

1.02 Quality Assurance:

- A. Standards:
 - 1. UFAS Fed. Std. 795-Requirements for the physically handicapped.
 - 2. MIL Spec. L-P-387a, type NDP, rated self-extinguishing, for sign materials.

1.03 Submittals:

- A. Provide manufacturer's catalog cut and data sheets, complete parts list and installation requirements for each item specified.
- B. Schedules: Indicate location and placement for all graphic items.

1.04 Product Delivery, Storage and Handling:

- A. Handle and store all items with care to prevent damage and injury to finish surfaces.

Part 2 - Products

2.01 Products of the manufacturers listed below have been specified herein to simplify descriptions of design, construction, and materials only. All items have been selected for visual and performance design quality which shall serve as a basis for acceptance of equivalent products by other manufacturers.

2.02 Signage System:

- A. Material: 1/8 inch thick, type ES melamine plastic.
- B. Size: 8" x 8" x 1/8", with 1/2" radius corners. Custom design - refer to 2.04 for text and symbols.
- C. Mounting: All graphics shall be permanently mounted to wall or door surface with tamper resistant screws. Coordinate with fencing contractor and adjust mounting as directed.
- D. Color: refer to Color Schedule, submit color samples with submittals, prior to approval. **Colors will be a factor in product acceptance.**
- E. Letter Style: Helvetica Medium.
- F. Standard Grade 2 braille shall be below all copy, all signs.
- G. All graphic material shall meet the requirements of UFAS Fed. Std. 795, and MIL spec L-P-387a.
- H. Acceptable Manufacturer: Series 200A, Type D format, Mohawk Sign systems.

DIVISION 10 - SPECIALTIES

SECTION 10400 - INTERIOR SIGNAGE

2.03 Plaque Groupings Required:

<u>Quantity</u>	<u>Plaque</u>	<u>Mounting Location</u>
-----------------	---------------	--------------------------

**Coordinate location with Architect

Plaque	Quantity	Location
---------------	-----------------	-----------------

A	**	1 each @ exterior doors or gates
---	----	----------------------------------

REFER TO DRAWINGS.

Part 3 - Execution

3.01 Installation:

- A. Comply with manufacturer's installation instructions and details on the Drawings. Set all units plumb and level in location indicated on the Drawings or as directed.
- B. Provide all necessary accessories: Items to support or attach Identifying Devices to result in a complete installation.
- C. Protect all signage plaques to prevent damage after installation.

End of Section