



5/2/24

CG

drawn by

MA

checked by

MAY 2024

date

revisions

- 1 ADDENDUM #3
- 2 CB-3

MOORE PUBLIC SCHOOLS
BOARD OF EDUCATION
MOORE, OKLAHOMA



RED OAK
ELEMENTARY SCHOOL
SECURITY UPGRADES

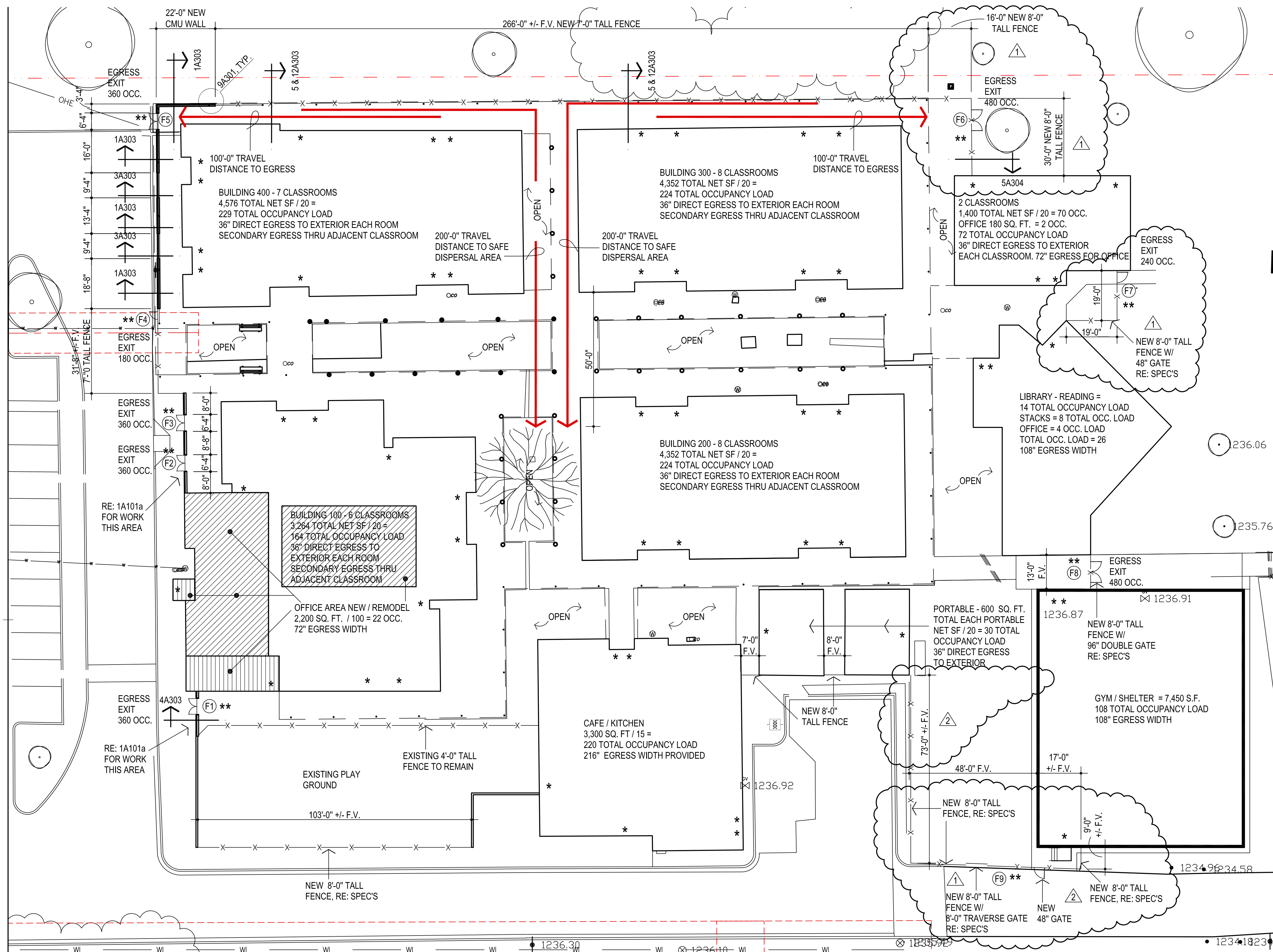
sheet no:

A101

SITE PLAN

OWNERSHIP USE OF DOCUMENTS:

AGP EXPRESSLY RESERVES ITS
COPYRIGHT AND OTHER PROPERTY
RIGHTS OF ALL PLANS AND DRAWINGS
DESIGNED AND/OR PRODUCED. PLANS
AND DRAWINGS ARE NOT TO BE
REPRODUCED IN ANY FORM OR MANNER
WITHOUT THE EXPRESSED WRITTEN
CONSENT OF AGP.



LEGEND:

- * INDICATES EXISTING EXITS FROM BUILDINGS
- ** INDICATES LOCATION OF NEW SIGNAGE PLAQUES, RE: SHEET A601

PASSIVE FIRE SAFETY SYSTEM:
PORTABLE FIRE EXTINGUISHERS
TRAVEL DISTANCE = 200'-0" MAX.
DEADEND - 25'-0" MAX.
ACTUAL DEADEND - NONE

ACTIVE FIRE SAFETY SYSTEMS:
FIRE ALARM SYSTEM
SMOKE DETECTION
AUTOMATIC AIR HANDLING EQUIP. SHUTDOWN
EXIT LIGHTS/EMERGENCY LIGHTS BATTERY

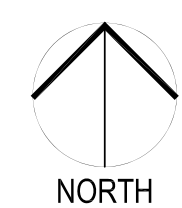
CODES/REGULATIONS USED (CITY OF OKLAHOMA CITY):
2018 IBC - INTERNATIONAL BUILDING CODE
AMERICAN WITH DISABILITIES ACT ACCESSIBILITY GUIDELINES
2017 NATIONAL ELECTRICAL CODE
2018 INTERNATIONAL PLUMBING CODE
2018 INTERNATIONAL MECHANICAL CODE
2018 INTERNATIONAL FIRE CODE
2009 ENERGY CONSERVATION CODE
2009 ANSI
ASSOCIATED SUPPLEMENTS TO EACH CODE

CONSTRUCTION DATA (TABLE 503):

OCCUPANCY -	E
CONSTRUCTION TYPE -	TYPE II - B
BASIC ALLOWABLE AREA -	58,000 S.F. PER FLOOR
ALLOWABLE STORIES -	3
ACTUAL STORIES -	1
ACTUAL HEIGHT -	16'-8"

STRUCTURAL FIRE PROTECTION (TABLE 601):

EXTERIOR BEARING WALLS	0 HOUR
INTERIOR BEARING WALLS	NONCOMBUSTIBLE
EXTERIOR NONBEARING WALLS	NONCOMBUSTIBLE
COLUMNS	0 HOUR
BEAMS	0 HOUR
PERMANENT PARTITIONS	NONCOMBUSTIBLE
FLOOR ASSEMBLIES	0 HOUR
ROOF ASSEMBLIES	0 HOUR
EXTERIOR OPENINGS	N/A



1

SITE PLAN

1" = 20'-0"



CG
drawn by
MA
checked by
MAY 2024
date

- revisions
- 1 ADDENDUM #1
 - 2 CB-3

MOORE PUBLIC SCHOOLS
BOARD OF EDUCATION
MOORE, OKLAHOMA



RED OAK
ELEMENTARY SCHOOL
SECURITY UPGRADES

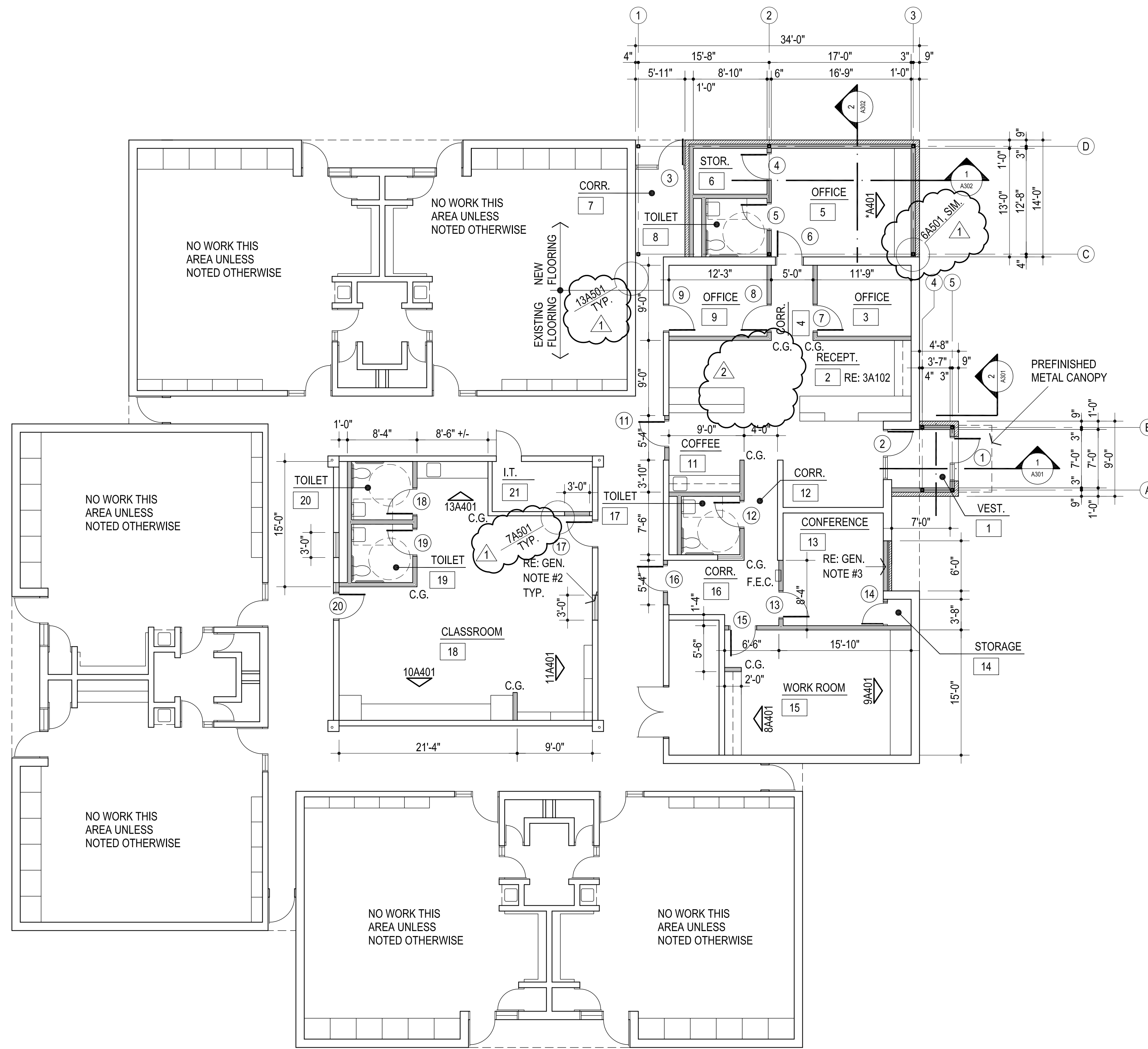
sheet no:

A102

FLOOR PLAN

OWNERSHIP USE OF DOCUMENTS:

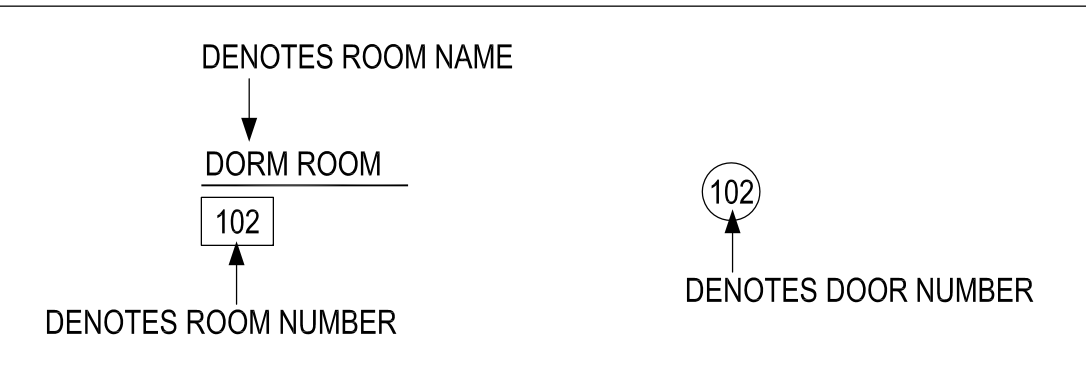
AGP EXPRESSLY RESERVES ITS COPYRIGHT AND OTHER PROPERTY RIGHTS OF ALL PLANS AND DRAWINGS DESIGNED AND/OR PRODUCED. PLANS AND DRAWINGS ARE NOT TO BE REPRODUCED IN ANY FORM OR MANNER WITHOUT THE EXPRESSED WRITTEN CONSENT OF AGP.



1 FLOOR PLAN
1/8" = 1'-0"

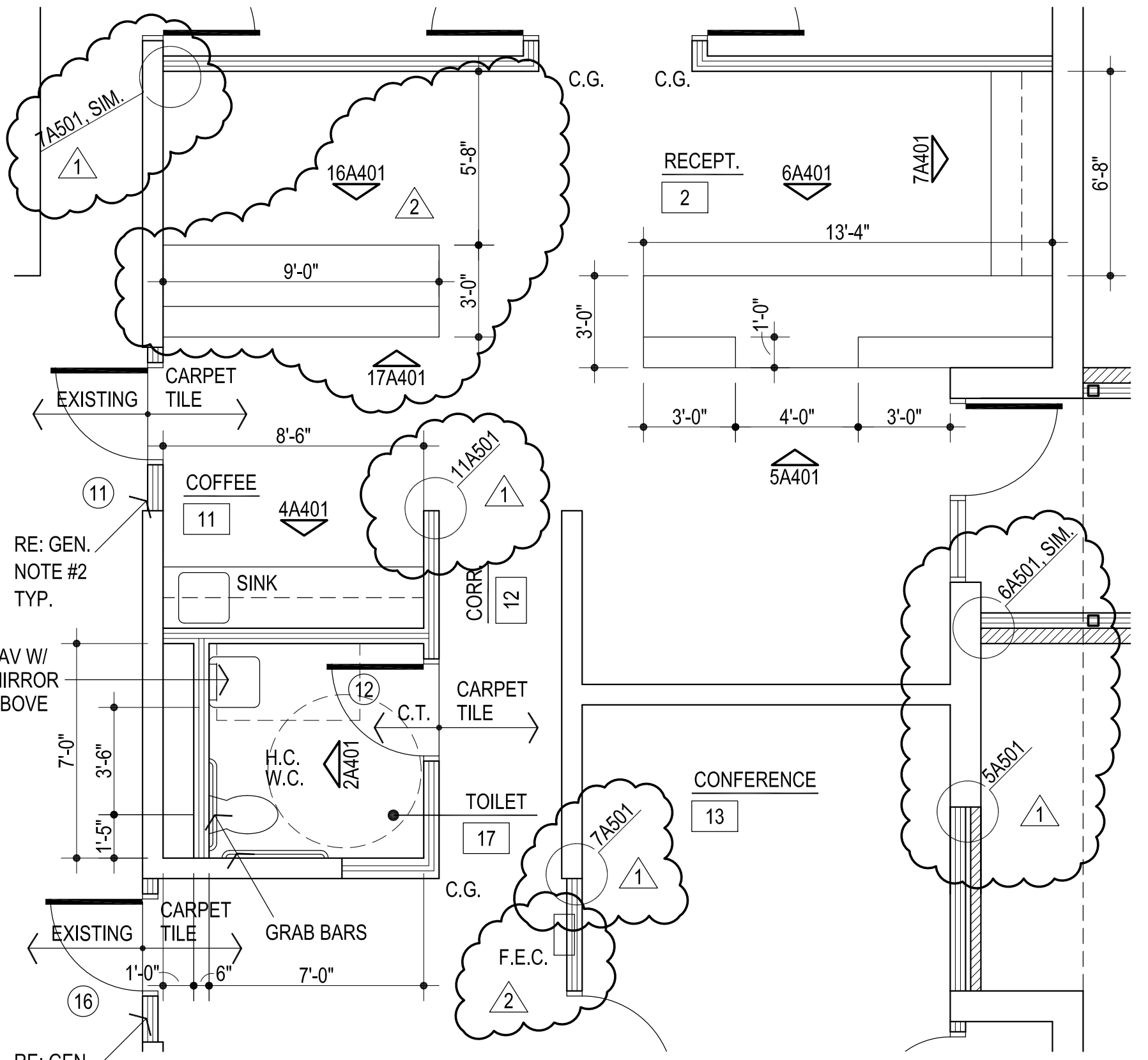
- GENERAL NOTES:
- F.E.C. - FIRE EXTINGUISHER AND CABINET
 - REMOVE EXISTING H.M. FRAME & WD. DOOR AND PREPARE OPENING TO RECEIVE NEW STUD IN FILL WITH GYP. BD EACH SIDE MATCH EXISTING WALL THICKNESS COORDINATE WITH ARCHITECT. PAINT ENTIRE WALL AT EXISTING CORRIDOR SIDE. RE: ROOM FINISH SCHEDULE
 - REMOVE EXISTING H.M. DOOR & FRAME AND PREPARE OPENING TO RECEIVE NEW STUD IN FILL WITH GYP. BD & BRICK VENEER MATCH EXISTING WALL THICKNESS COORDINATE WITH ARCHITECT

- PROVIDE WOOD BLOCKING AT ALL WALL MOUNTED ITEMS IN NEW STUD WALLS, RE: 21A501
- ADD CORNER GUARDS (C.G.) AT ALL INTERIOR LOCATIONS NOTED

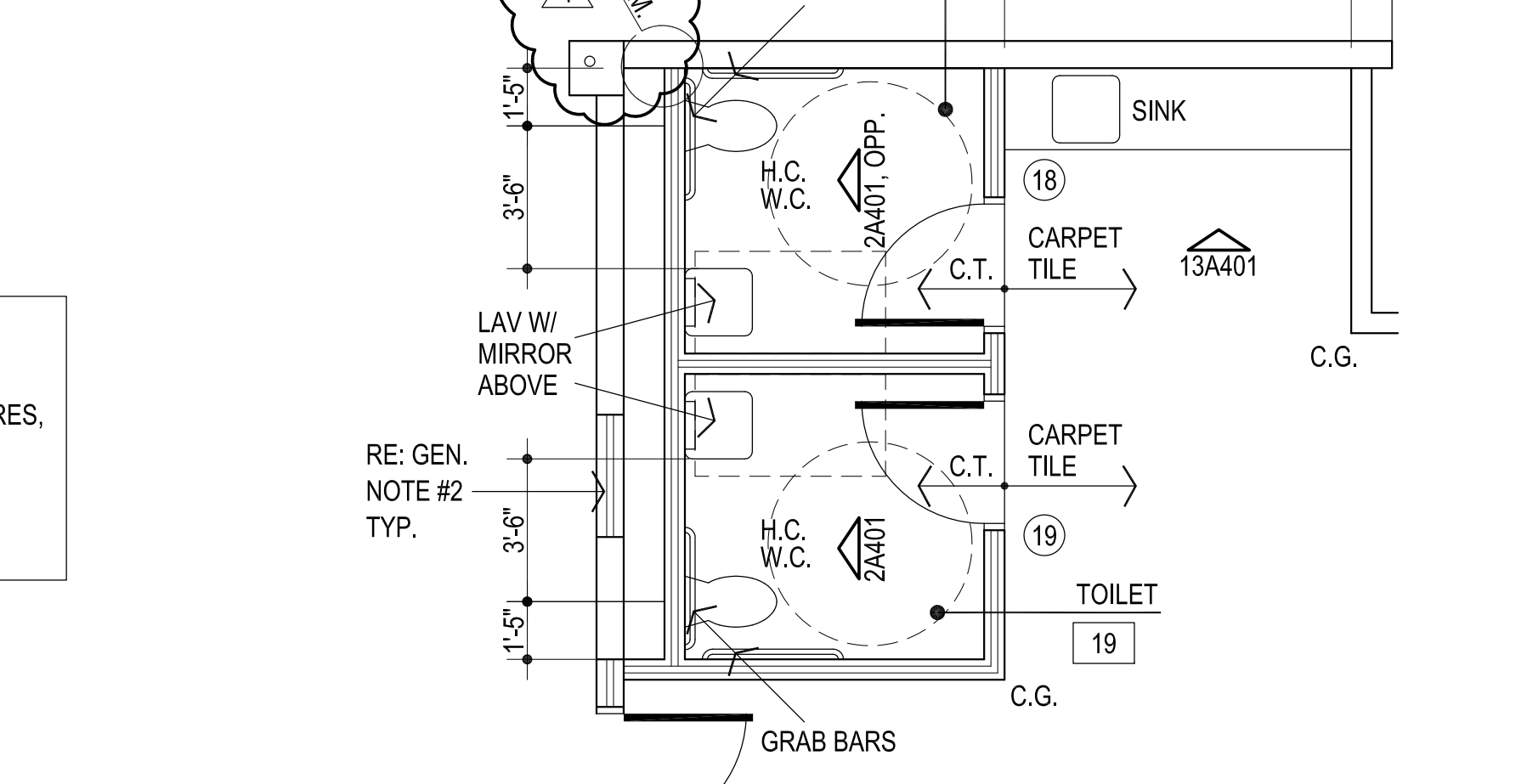


NOTE: CONTRACTOR TO VERIFY THAT THE MOUNTING HEIGHTS OF ALL WALL MOUNTED FIXTURES (I.E. PLUMBING FIXTURES, GRAB BARS, MIRRORS, ETC.) MEET ALL APPLICABLE CODES & STANDARDS PRIOR TO INSTALLATION.

2 ENLARGED FLOOR PLAN ROOM #8
1/4" = 1'-0"



3 ENLARGED FLOOR PLAN ROOM #2, 10, 11, 12 & 17
1/4" = 1'-0"



4 ENLARGED FLOOR PLAN ROOM #19 & 20
1/4" = 1'-0"



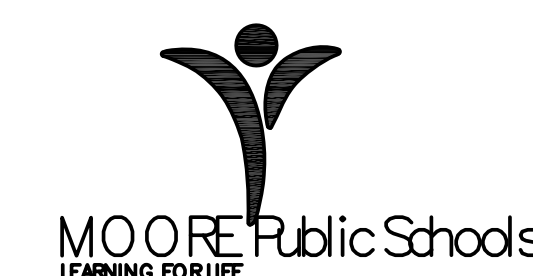


CG
drawn by
MA
checked by
MAY 2024
date

revisions

- 1 ADDENDUM #1
- 2 ADDENDUM #3
- 3 RFI #7
- 4 CB-3

MOORE PUBLIC SCHOOLS
BOARD OF EDUCATION
MOORE, OKLAHOMA



RED OAK
ELEMENTARY SCHOOL
SECURITY UPGRADES

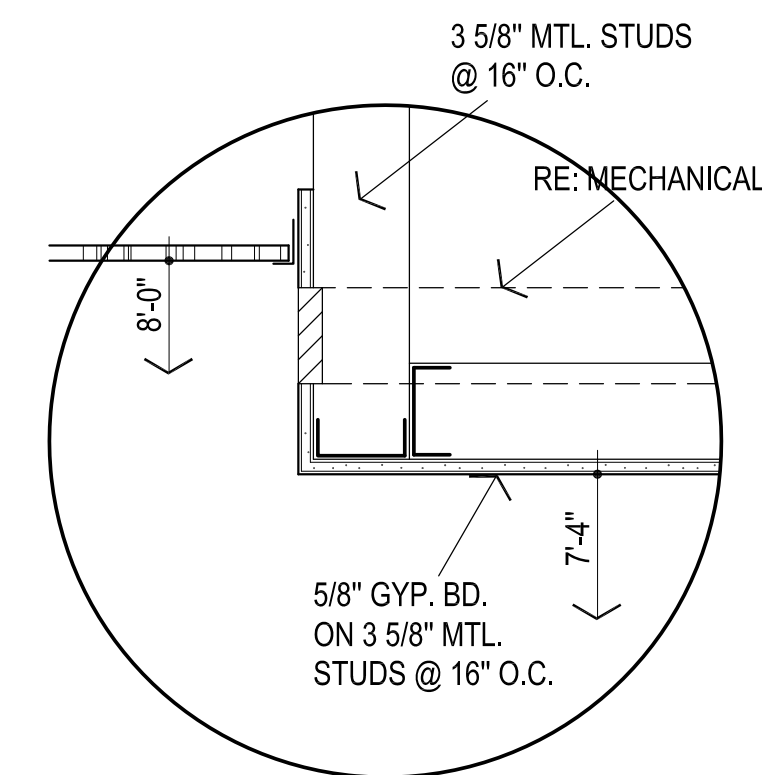
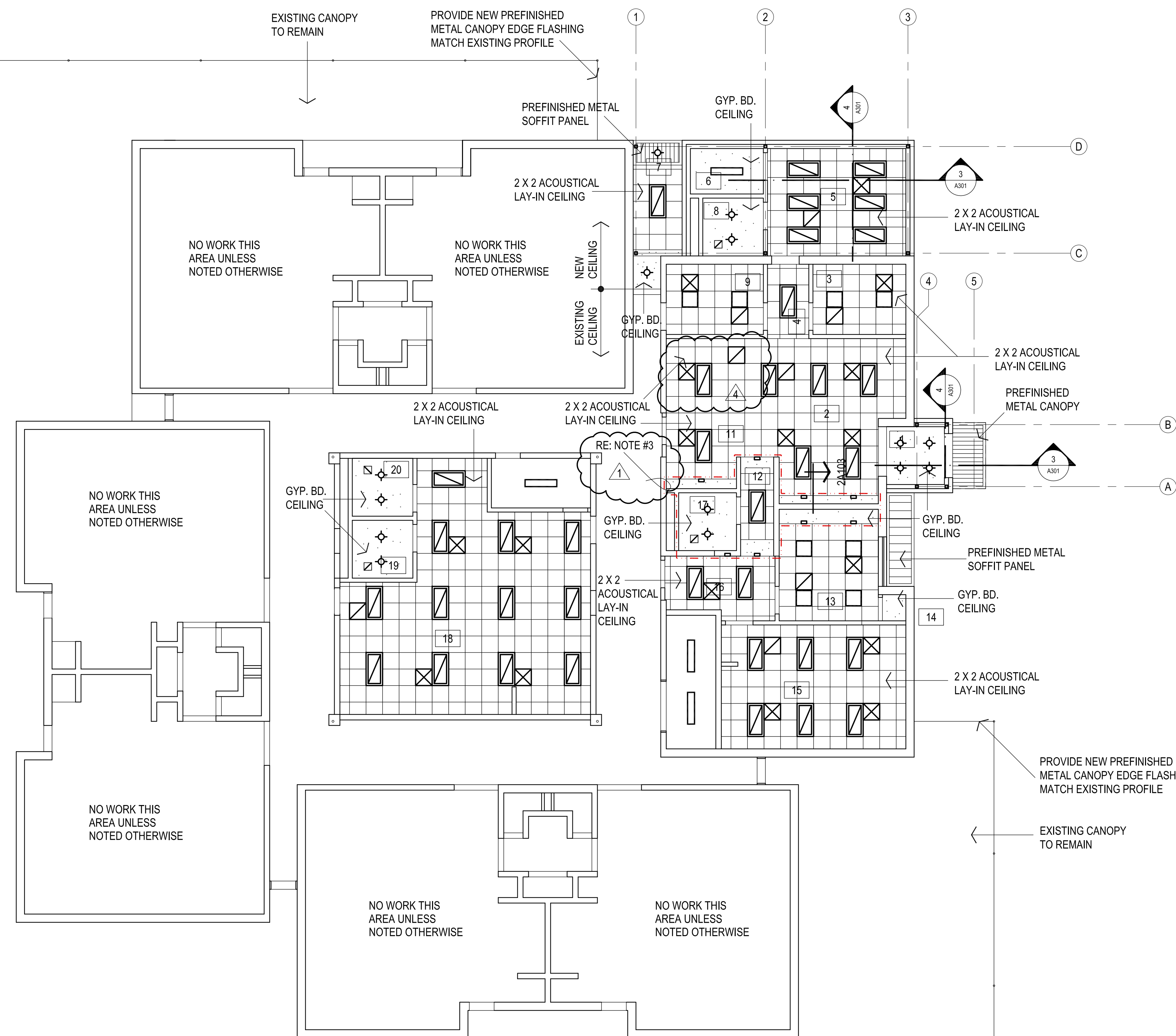
sheet no:

A103

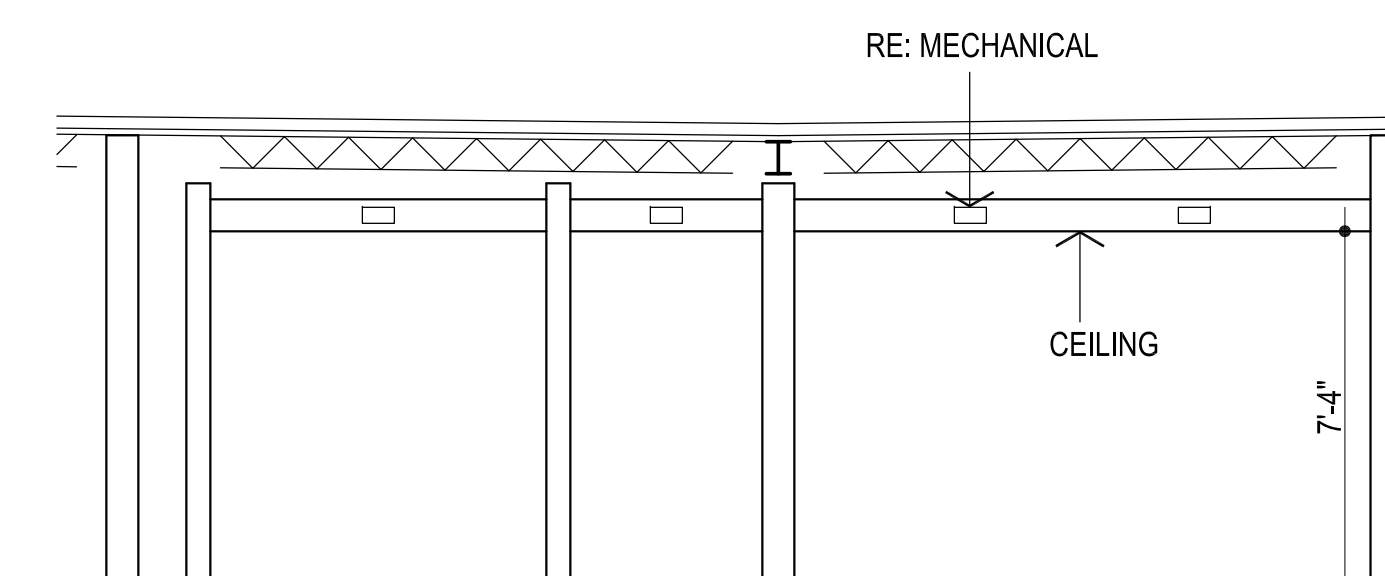
REFLECTED CEILING PLAN

OWNERSHIP USE OF DOCUMENTS:

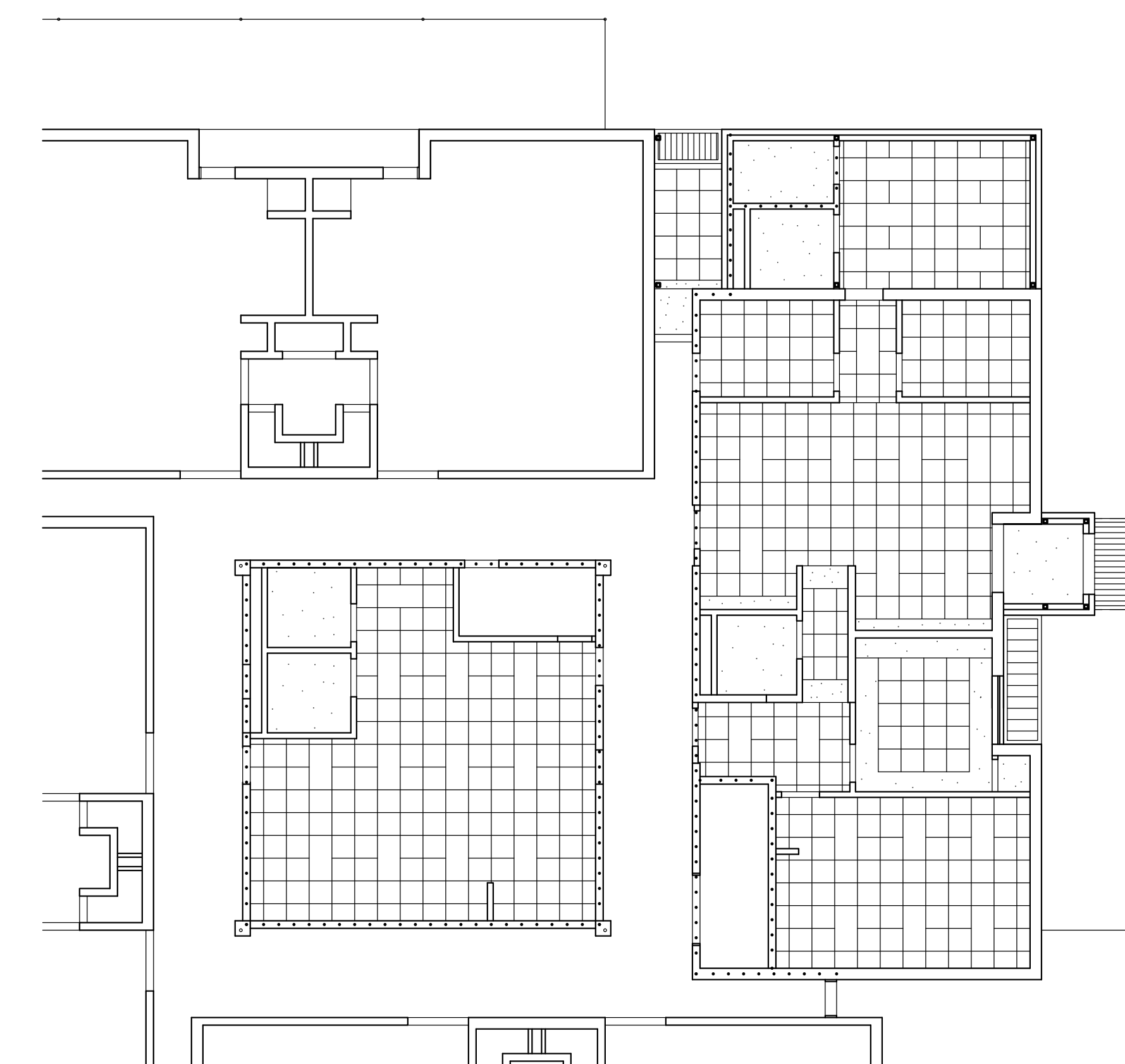
AGP EXPRESSLY RESERVES ITS
COPYRIGHT AND OTHER PROPERTY
RIGHTS OF ALL PLANS AND DRAWINGS
DESIGNED AND/OR PRODUCED. PLANS
AND DRAWINGS ARE NOT TO BE
REPRODUCED IN ANY FORM OR MANNER
WITHOUT THE EXPRESSED WRITTEN
CONSENT OF AGP.



2 GYP. BD. HEADER
1 1/2" = 1'-0"



3 TYP. HEADER FURR-DOWN
1/4" = 1'-0"



4 FIRE RATED WALL PLAN
3/32" = 1'-0"

DENOTES 1 HR. RATED PARTITIONS CLOSE-OUT TO
BOTTOM OF DECKING - CLOSE-OUT PARTITIONS TO
TO BE CONSTRUCTED OF 1 LAYER OF 5/8" FIRE
RATED GYP. BOARD EACH SIDE ON 6" METAL STUDS
@ 16" O.C. STAGGER ALL JOINTS & PROVIDE FIRE TAPE.
SEAL ALL PENETRATIONS W/ CONTINUOUS FIRE
STOPPING INSULATION &/OR SEALANT.

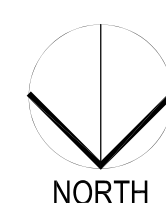
1 REFLECTED CEILING PLAN
1/8" = 1'-0"

LEGEND:

- MECHANICAL OPENINGS
- ELECTRICAL FIXTURES
- CEILING MOUNTED SMOKE DETECTOR, RE: ELEC

NOTES:

1. REFER MECHANICAL & ELECTRICAL FOR ANY
ADDITIONAL CEILING MOUNTED FIXTURES
2. NUMBER NOT USED
3. --- INDICATES CEILING HEIGHT TO BE 7'-4" ABV.
FIN. FLR. FOR HEADER FURR-DOWN & SIDEWALL
LOUVERS, RE: 2 & 3A103





CG
drawn by

MA
checked by

MAY 2024
date

revisions

1 CB-3

MOORE PUBLIC SCHOOLS
BOARD OF EDUCATION
MOORE, OKLAHOMA



RED OAK
ELEMENTARY SCHOOL
SECURITY UPGRADES

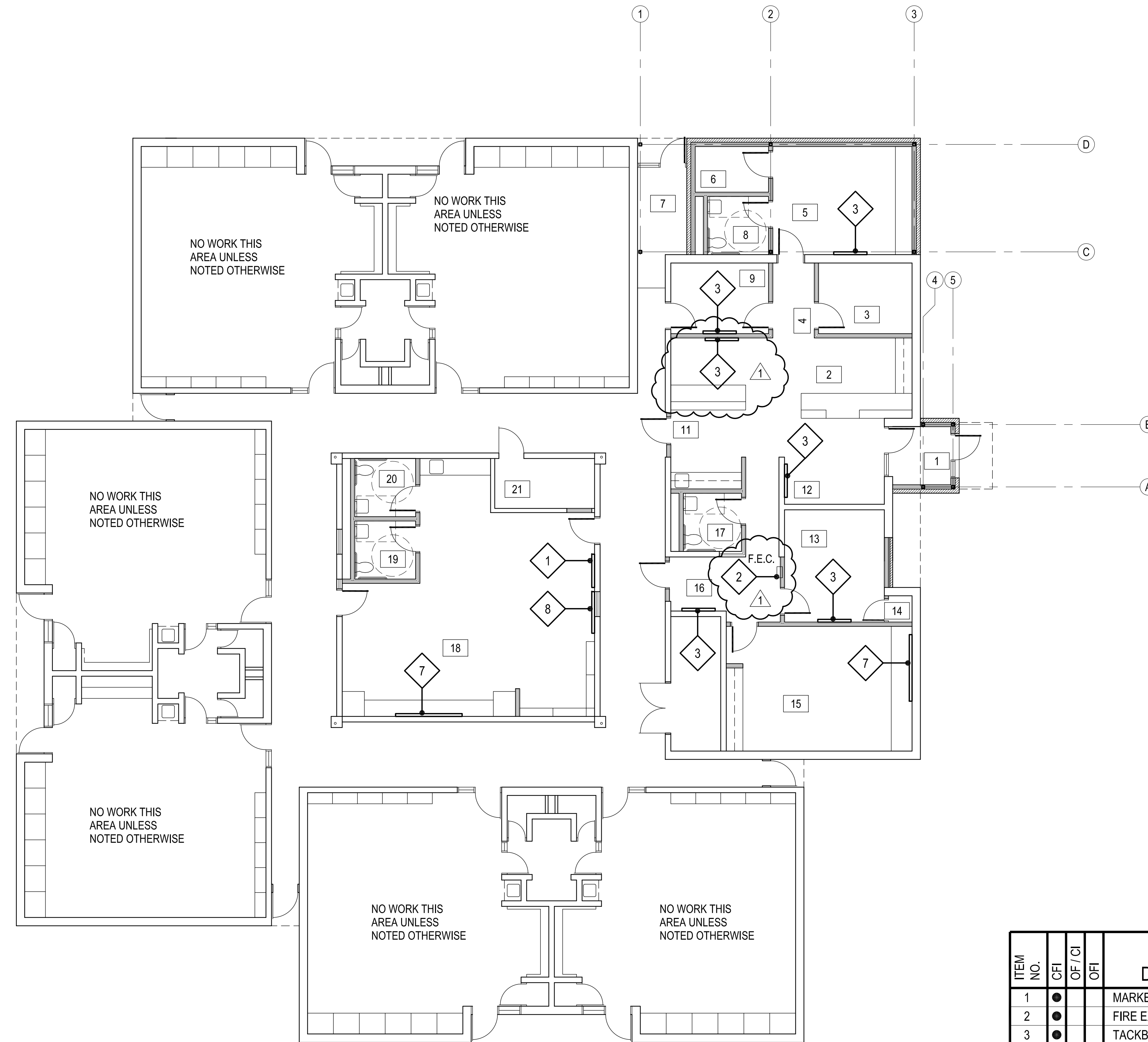
sheet no:

A105

EQUIPMENT PLAN

OWNERSHIP USE OF DOCUMENTS:

AGP EXPRESSLY RESERVES ITS
COPYRIGHT AND OTHER PROPERTY
RIGHTS OF ALL PLANS AND DRAWINGS
DESIGNED AND/OR PRODUCED. PLANS
AND DRAWINGS ARE NOT TO BE
REPRODUCED IN ANY FORM OR MANNER
WITHOUT THE EXPRESSED WRITTEN
CONSENT OF AGP.



1 EQUIPMENT PLAN
1/8" = 1'-0"
NORTH

ITEM NO.	CFI	OF/OI	DESCRIPTION	MANUFACTURER		REMARKS
				NAME	MODEL NO.	
1	●		MARKERBOARD - 4'-0"	BEST-RITE CHALKBOARD CO.	RE: SPECS	W/ CHALK RAIL
2	●		FIRE EXTINGUISHER & CABINET	JL INDUSTRIES	RE: SPECS	
3	●		TACKBOARD - 4'-0"	BEST-RITE CHALKBOARD CO.	RE: SPECS	
4		●	OFFICE DESK	HON	SINGLE FULL PEDESTAL	RECTANGULAR TOP / SWEEP PULLS
5		●	CREDENZA	HON	SINGLE FULL	SWEEP PULLS
6	●		TABLE W/ CHAIRS			
7	●		TACKBOARD - 8'-0"	BEST-RITE CHALKBOARD CO.	RE: SPECS	
8		●	SMARTBOARD			BY OWNER

2 EQUIPMENT / FURNITURE SCHEDULE
1/8" = 1'-0"

LEGEND :

◊ ——— CONTRACTOR FURNISHED AND INSTALLED (CFI)

◊ - - - - OWNER FURNISHED AND OWNER INSTALLED (OF / OI)



CG
drawn by
MA
checked by
MAY 2024
date

revisions
1 ADDENDUM #1
2 CB-3

MOORE PUBLIC SCHOOLS
BOARD OF EDUCATION
MOORE, OKLAHOMA



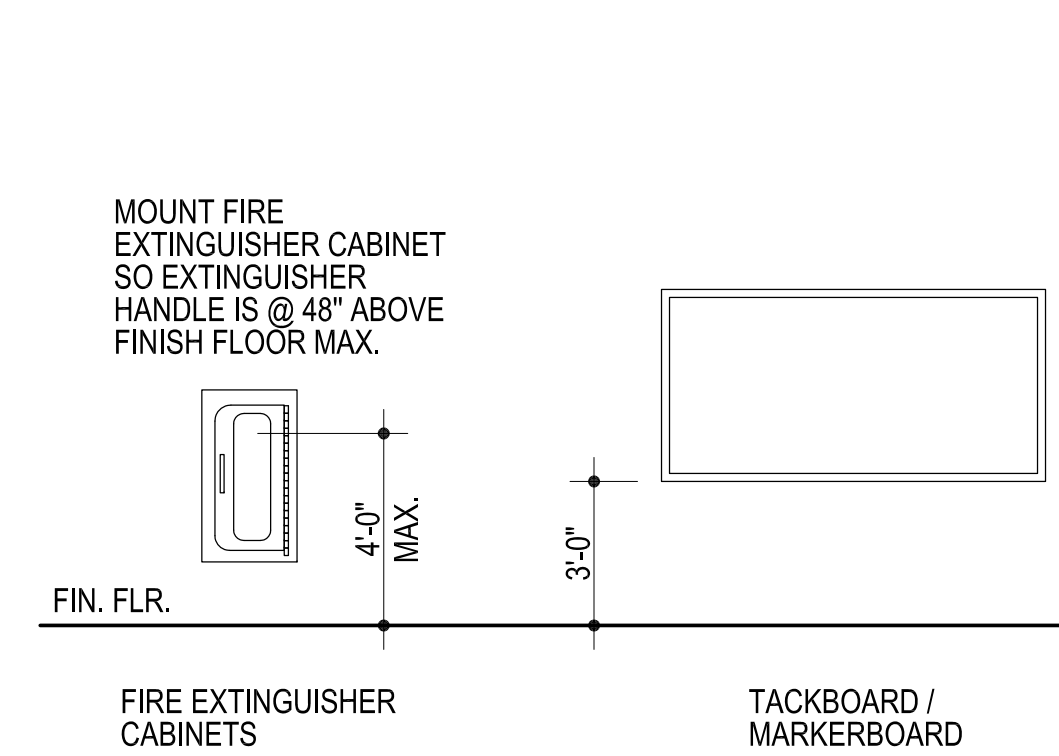
RED OAK
ELEMENTARY SCHOOL
SECURITY UPGRADES

sheet no:

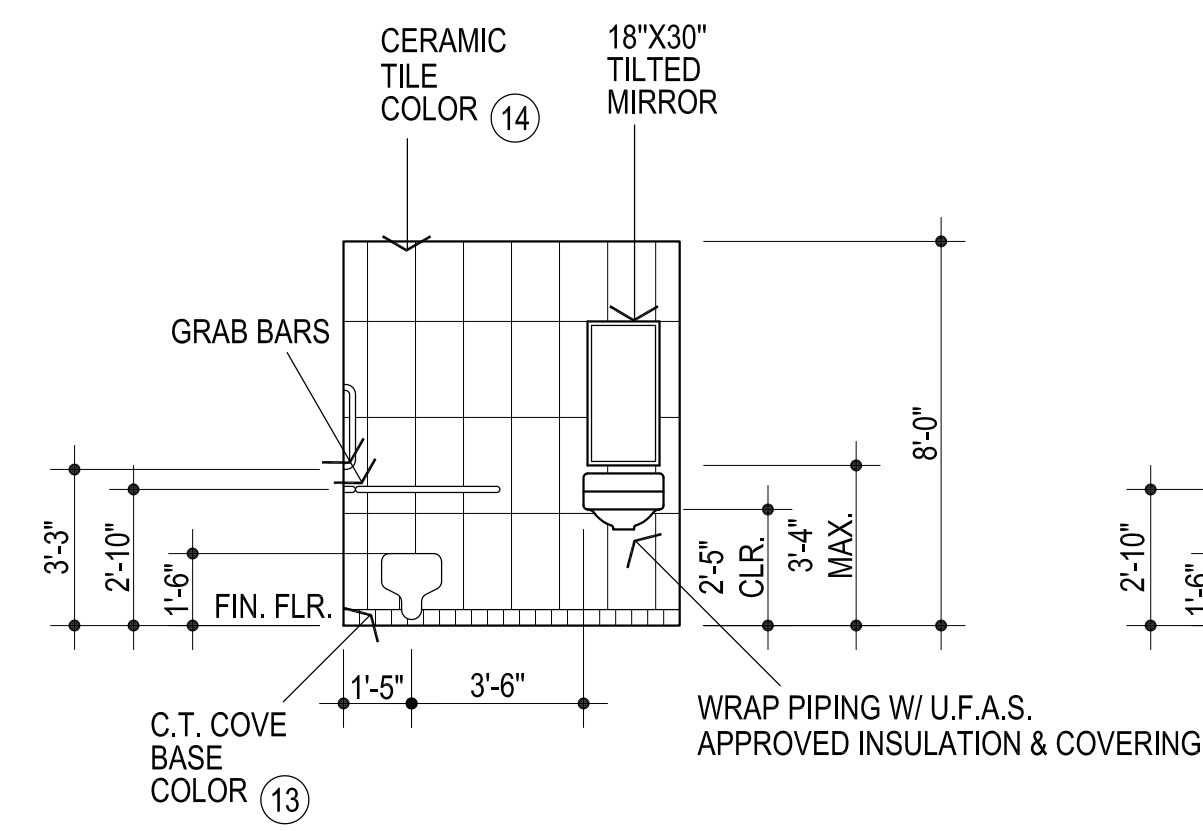
A401

OWNERSHIP USE OF DOCUMENTS:
AGP EXPRESSLY RESERVES ITS
COPYRIGHT AND OTHER PROPERTY
RIGHTS OF ALL PLANS AND DRAWINGS
DESIGNED AND/OR PRODUCED. PLANS
AND DRAWINGS ARE NOT TO BE
REPRODUCED IN ANY FORM OR MANNER
WITHOUT THE EXPRESSED WRITTEN
CONSENT OF AGP.

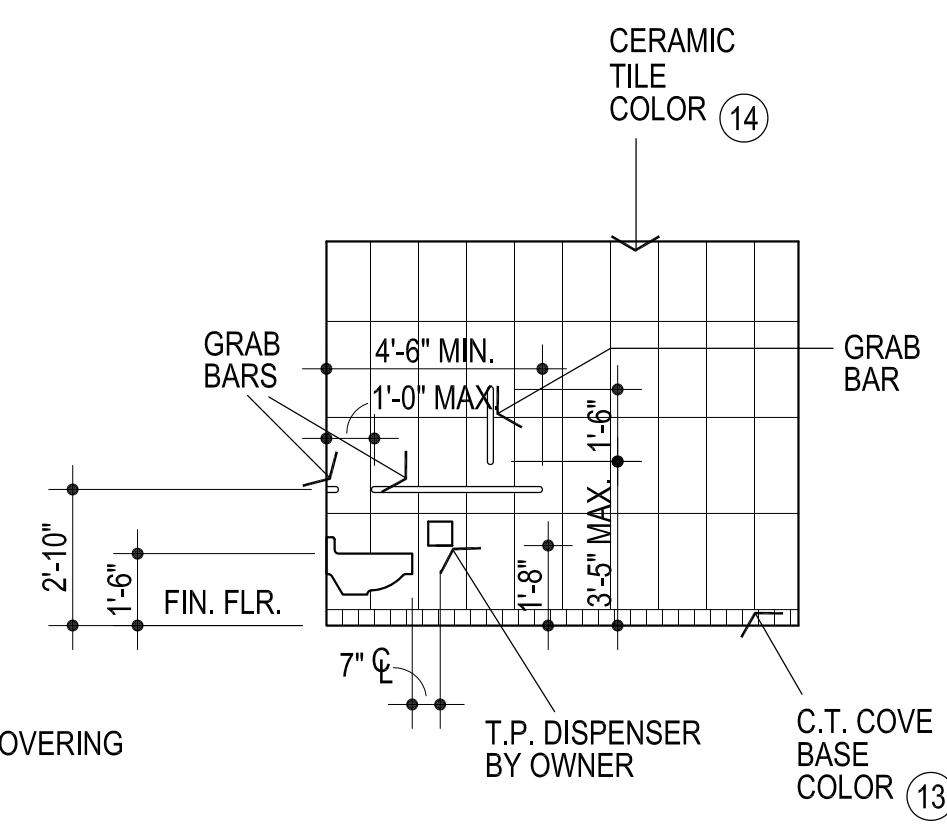
NOTE: CONTRACTOR TO VERIFY THAT
THE MOUNTING HEIGHTS OF ALL WALL
MOUNTED FIXTURES (I.E. PLUMBING FIXTURES,
GRAB BARS, MIRRORS, ETC.) MEET
ALL APPLICABLE CODES & STANDARDS
PRIOR TO INSTALLATION.



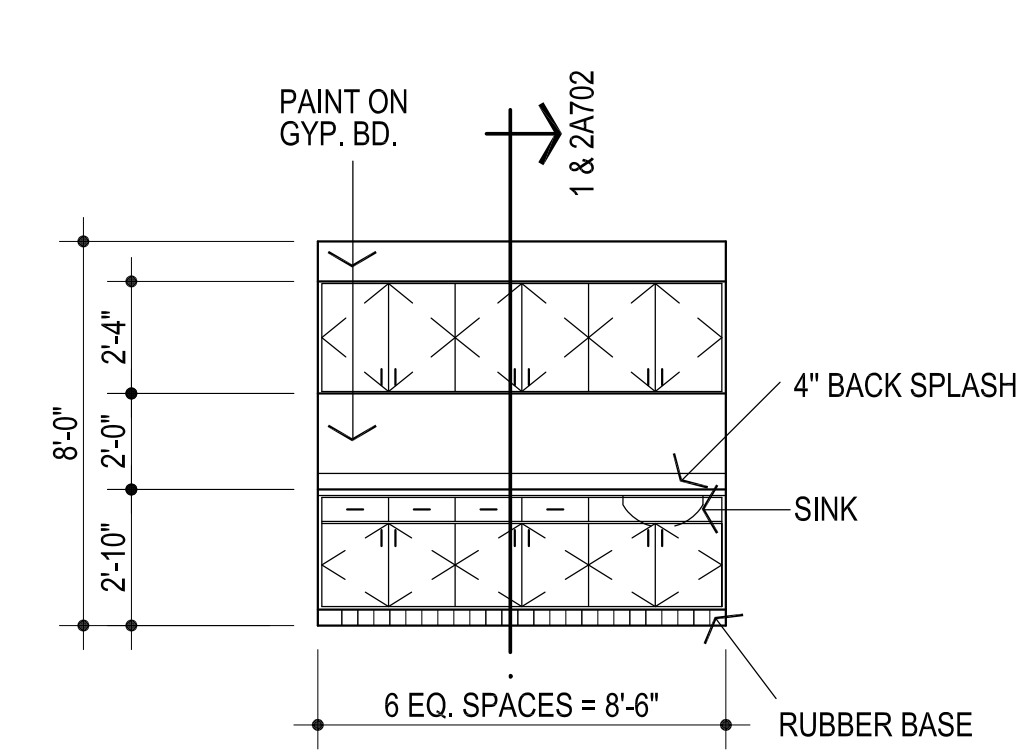
1 TYPICAL MOUNTING HEIGHTS
1/4" = 1'-0"



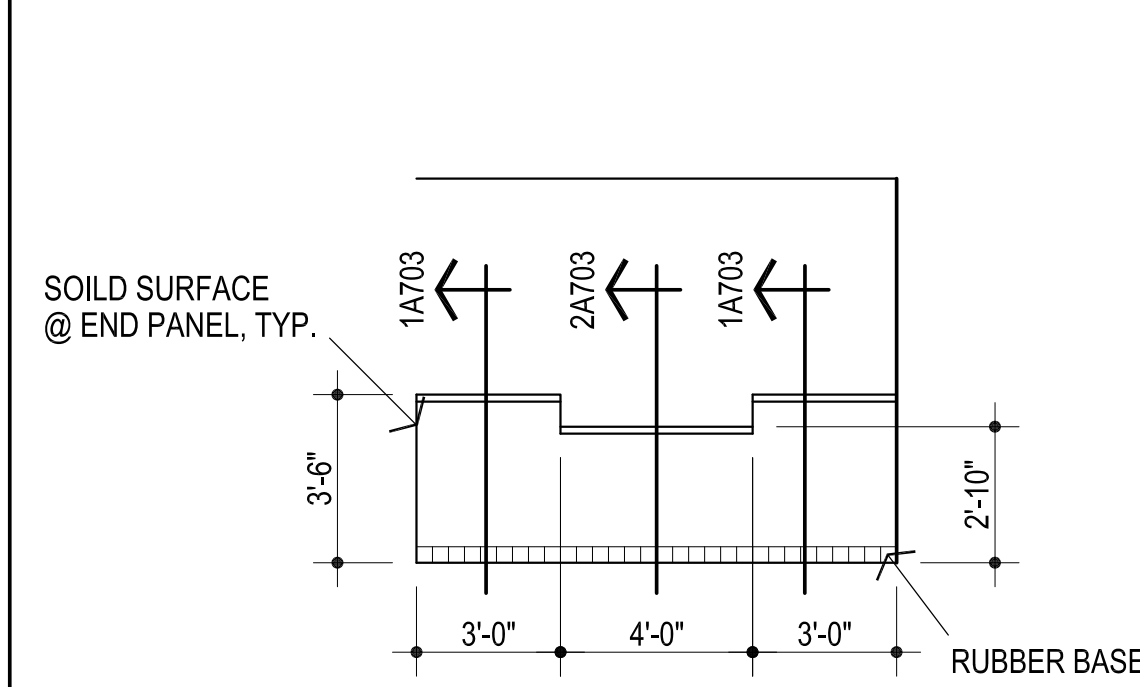
2 E. WALL ROOM # 8, 17, 19 & 20 OPP.
1/4" = 1'-0"



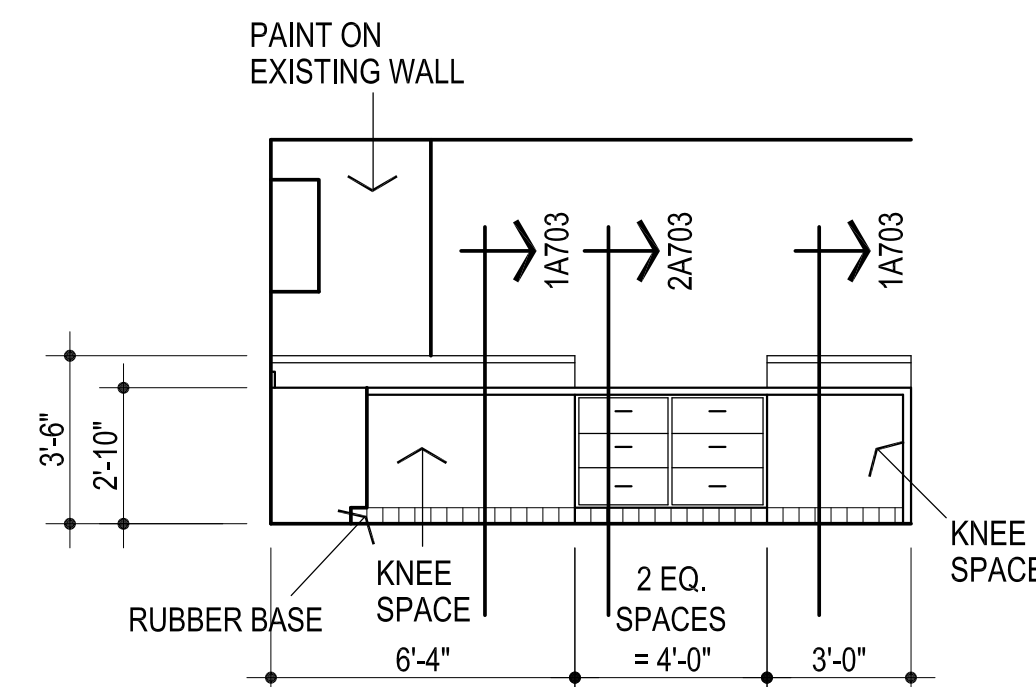
3 HANDICAP ACCESSIBLE W.C.
1/4" = 1'-0"



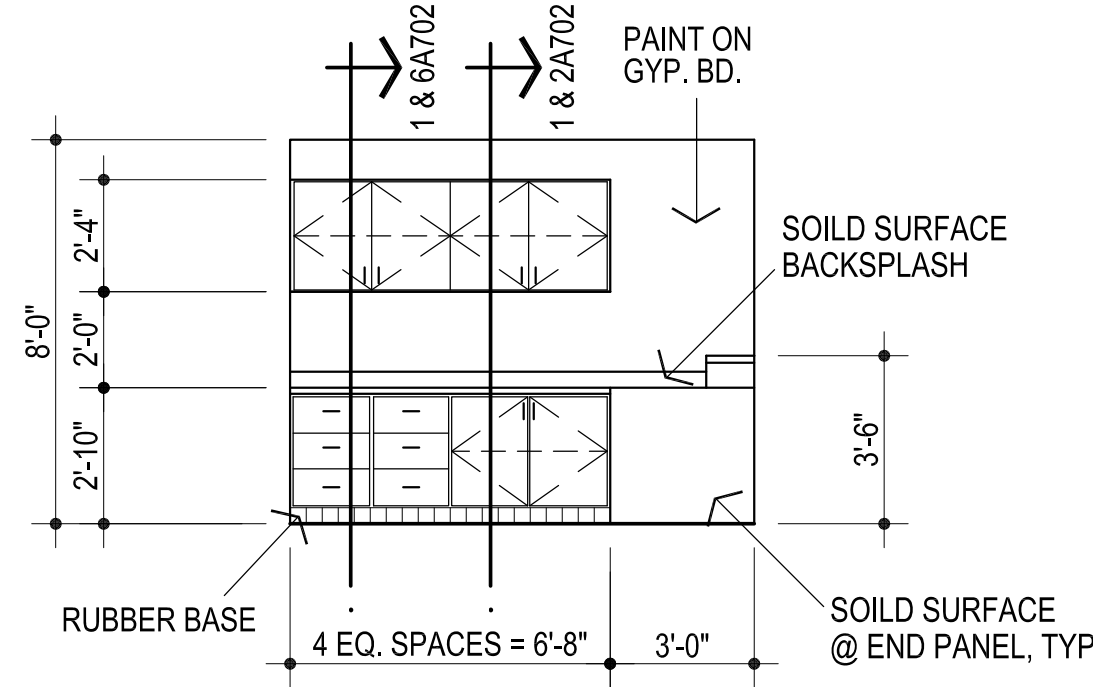
4 N. WALL ROOM # 11
1/4" = 1'-0"



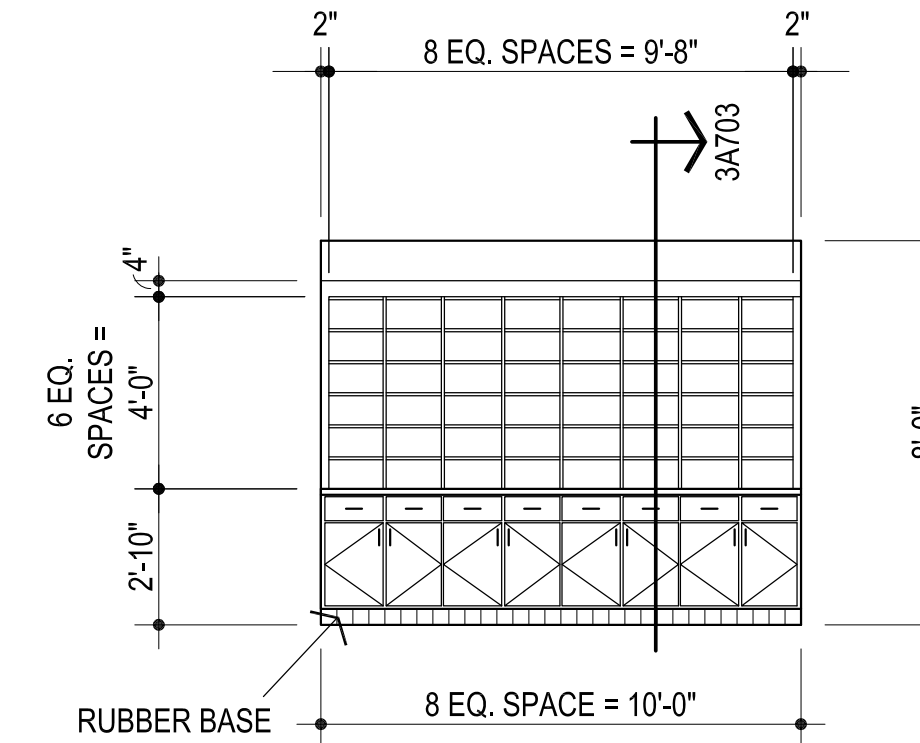
5 S. WALL ROOM # 2
1/4" = 1'-0"



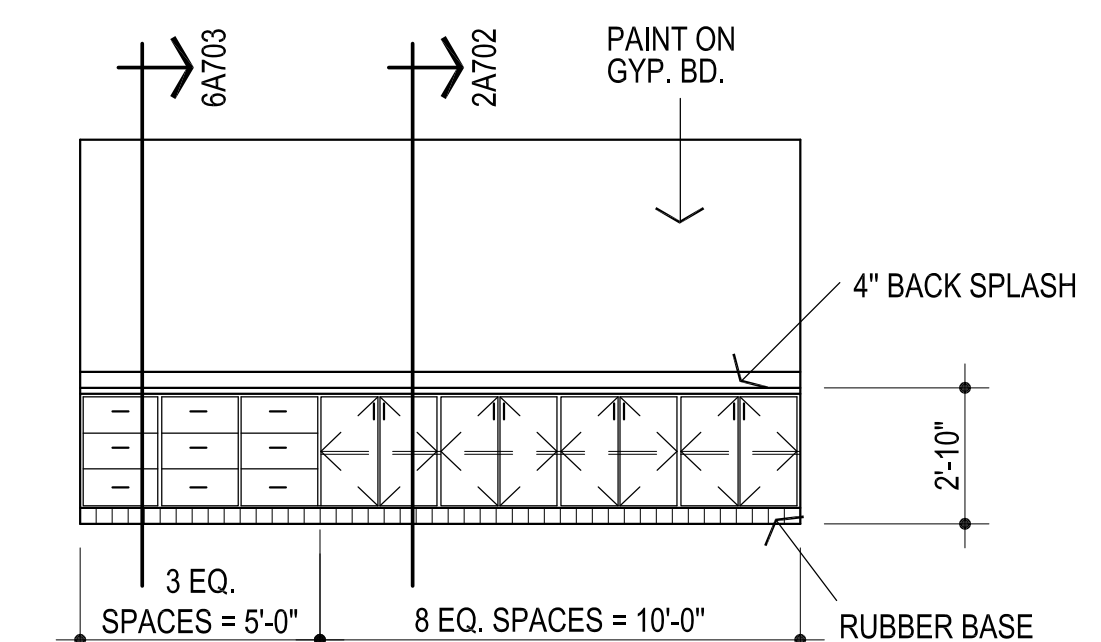
6 N. WALL ROOM # 2
1/4" = 1'-0"



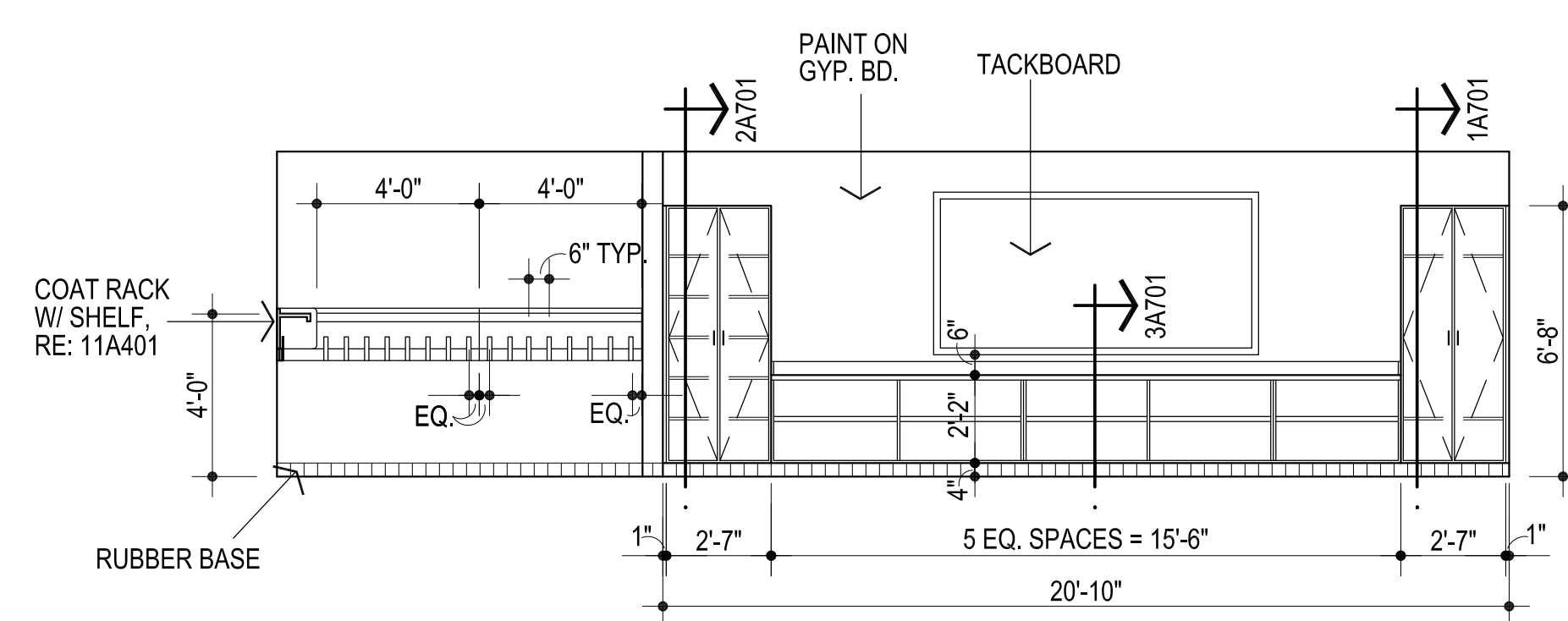
7 W. WALL ROOM # 2
1/4" = 1'-0"



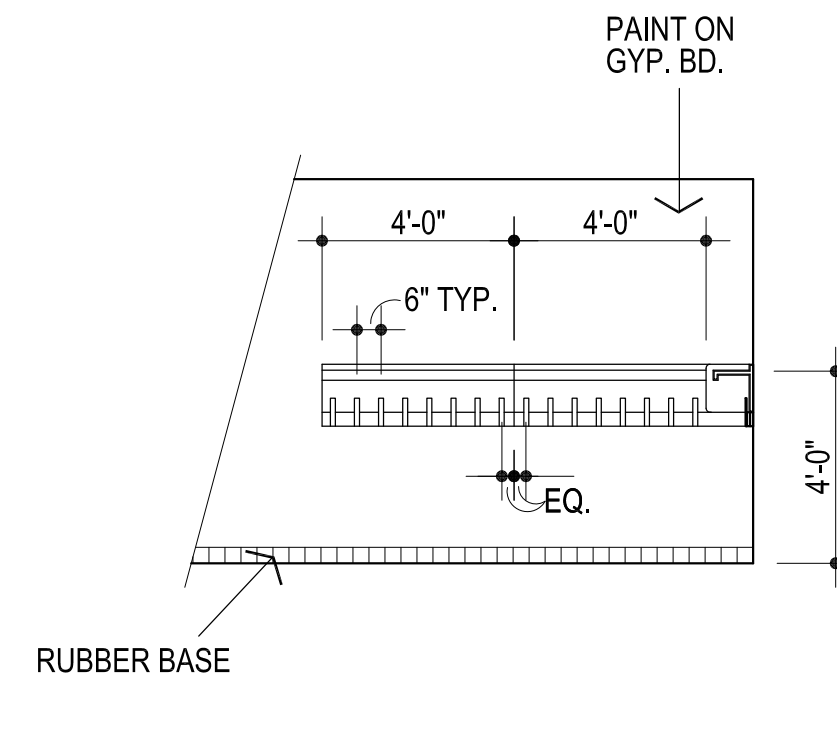
8 E. WALL ROOM # 15
1/4" = 1'-0"



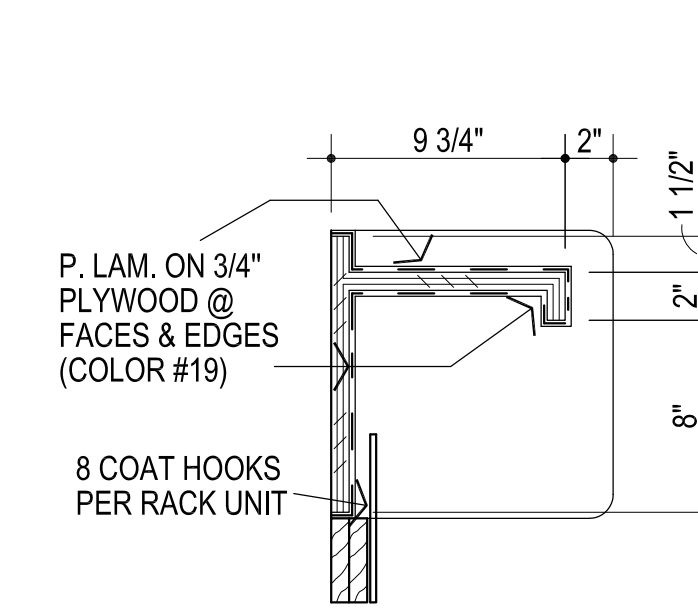
9 W. WALL ROOM # 15
1/4" = 1'-0"



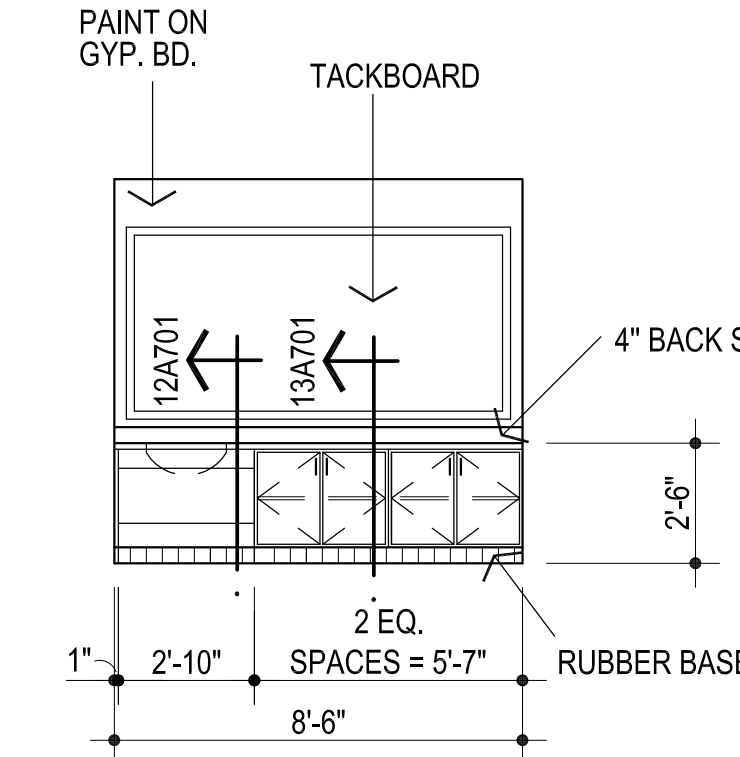
10 N. WALL ROOM # 18
1/4" = 1'-0"



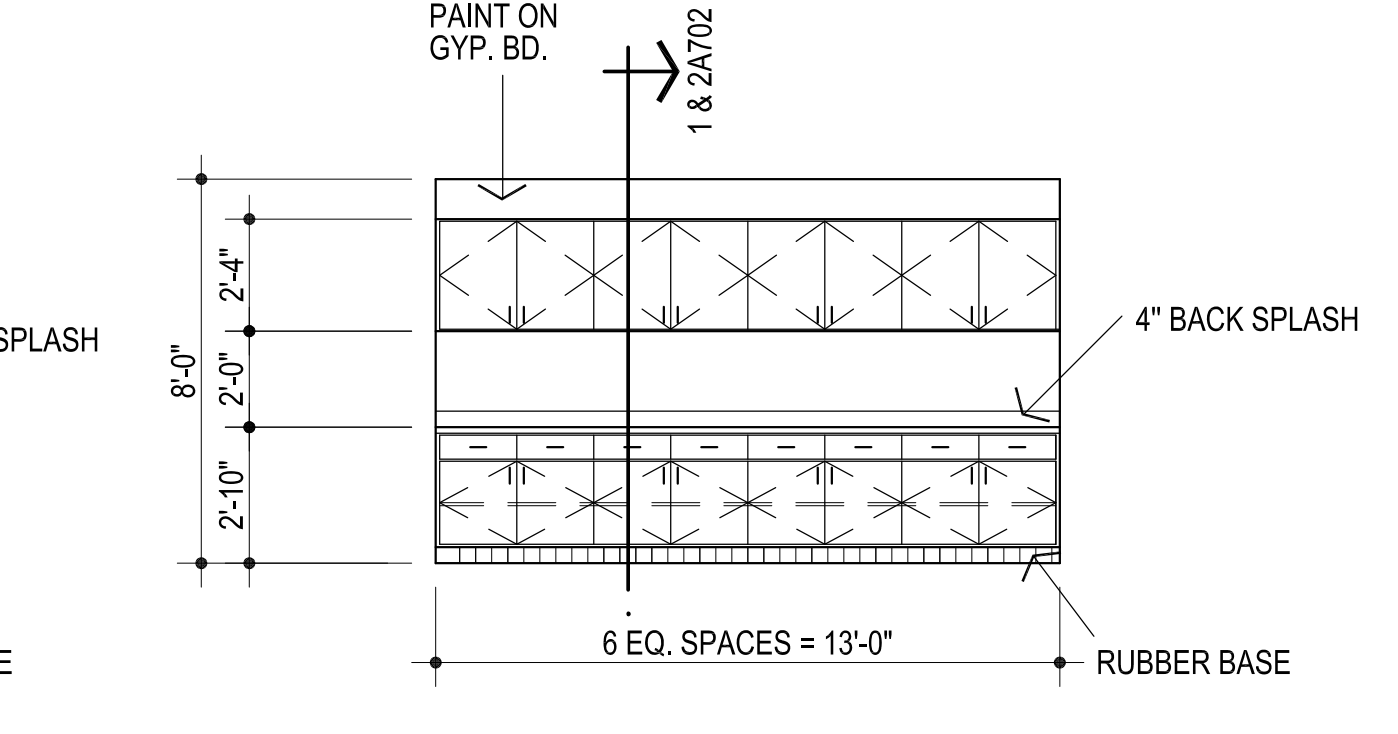
11 W. WALL ROOM # 18
1/4" = 1'-0"



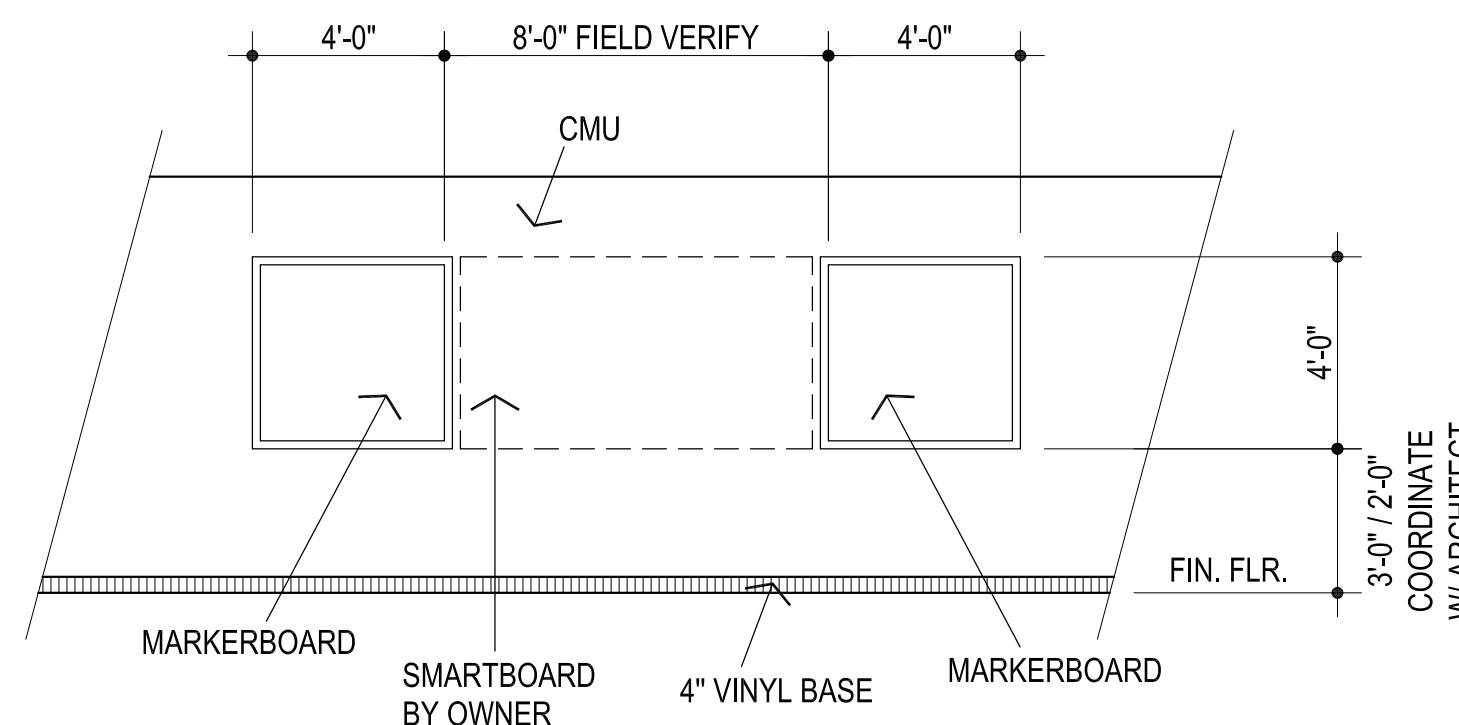
12 COAT HOOK SECTION
1 1/2" = 1'-0"



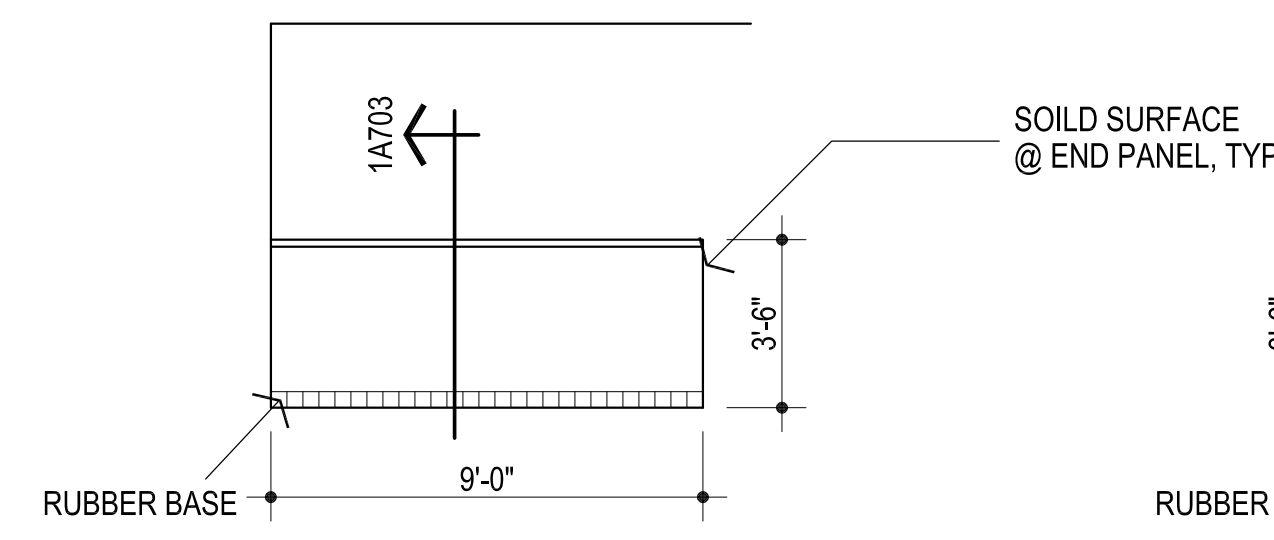
13 S. WALL ROOM # 18
1/4" = 1'-0"



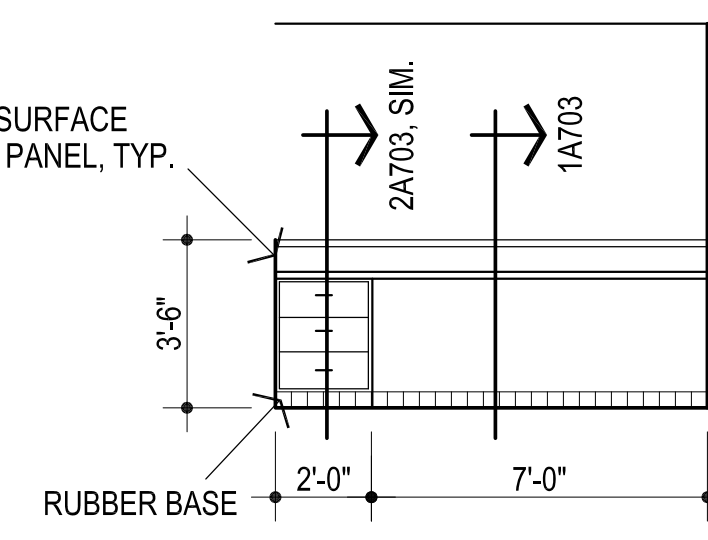
14 W. WALL ROOM # 5
1/4" = 1'-0"



15 ELEV. @ TYP. CLASSROOM "SMARTBOARD"
1/4" = 1'-0"



16 S. WALL ROOM # 2
1/4" = 1'-0"



17 N. WALL ROOM # 2
1/4" = 1'-0"

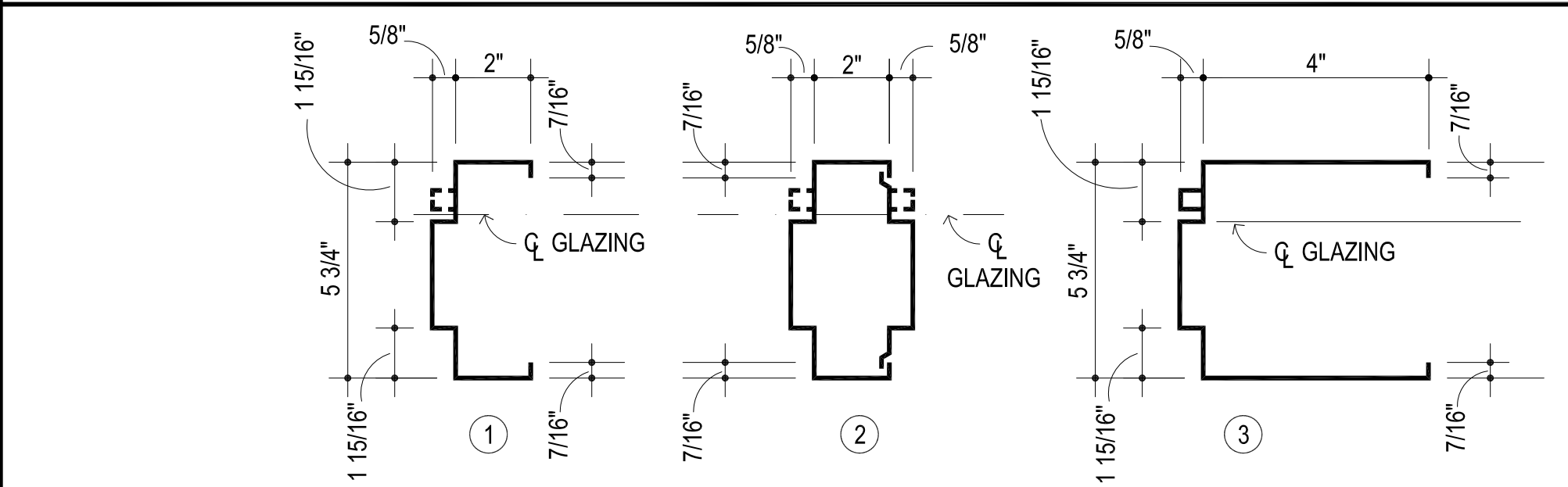
EXTERIOR DOORS / GATES

DOOR NO.	LOCATION		DOOR ELEV.	DOOR MAT'L	DOOR SIZE			FRAME ELEV.	DOOR DETAILS				REMARKS	HDWR. SET NO.	
	FROM	TO			WIDTH	HEIGHT	TH'K		HEAD	SILL	JAMB	JAMB			
F1	CORR.	EXT.	A	H.M.	PR.	3'-0"	7'-0"	1 3/4"	B	6A601	8A601	7A601	7A601		F2
F2			A	H.M.	PR.	3'-0"	6'-8"	1 3/4"	A	6A601	8A601	7A601	7A601		F2
F3			A	H.M.	PR.	3'-0"	6'-8"	1 3/4"	A	6A601	8A601	7A601	7A601		F2
F4														BY FENCE / GATE MFR.	F3
F5			A	H.M.	PR.	3'-0"	6'-8"	1 3/4"	A	6A601	8A601	7A601	7A601		F2
F6														BY FENCE / GATE MFR.	F3
F7														BY FENCE / GATE MFR.	F3
F8														BY FENCE / GATE MFR.	F3
F9	CORR.	EXT.												BY FENCE / GATE MFR.	F3

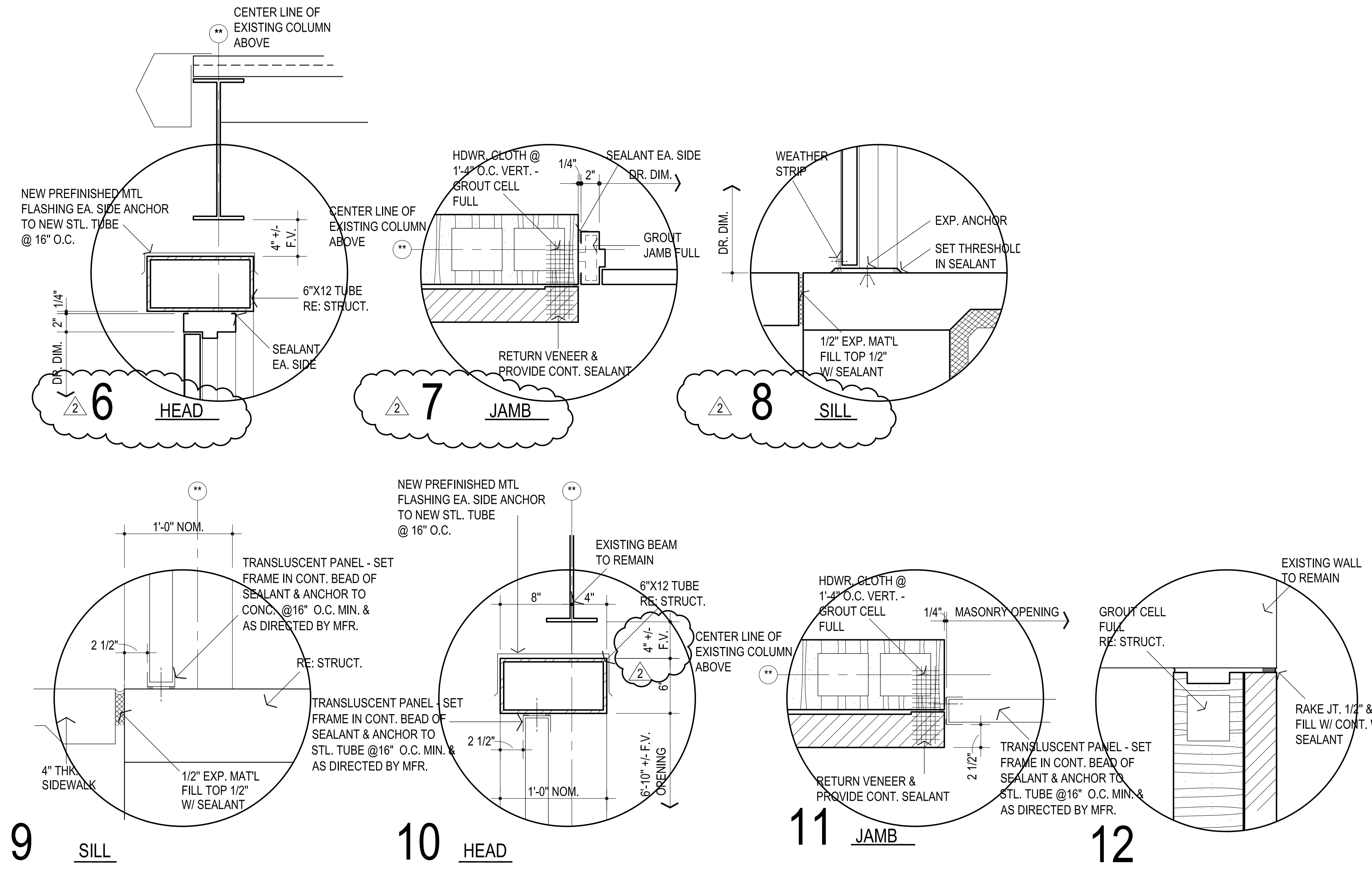
REMODEL / ADDITION

DOOR NO.	LOCATION		DOOR ELEV.	DOOR MAT'L	DOOR SIZE			FRAME ELEV.	DOOR DETAILS				REMARKS	HDWR. SET NO.	
	FROM	TO			WIDTH	HEIGHT	TH'K		HEAD	SILL	JAMB	JAMB			
1	1	EXT.	B	H.M.	3'-0"	7'-0"	1 3/4"	C	1A501	15A501	8A501	8A501		7	
2	2	1	B	H.M.				D	2A501, SIM.	16A501	4A501, SIM.	4A501		6	
3	7	EXT.	B	H.M.				E	3A501	15A501	4A501	10A501		7	
4	5	6	A	WD.				A	2A501	16A501	9A501	9A501		3	
5	5	8	A											2	
6	4	5	B											4	
7	4	3												4	
8	4	9												4	
9	7	9												4	
10	OMIT DOOR				OMIT DOOR										3
11	11	EXIST.	B											2	
12	12	17	A											4	
13	16	13	B											4	
14	14	13	A											3	
15	16	15	B											4	
16	16	EXIST.	B											1	
17	EXIST.	18	B											5	
18	18	20	A											2	
19	18	19	A											2	
20	EXIST.	18	A	WD.	3'-0"	7'-0"	1 3/4"	A	2A501	16A501	9A501	9A501		5	

2 DOOR SCHEDULE

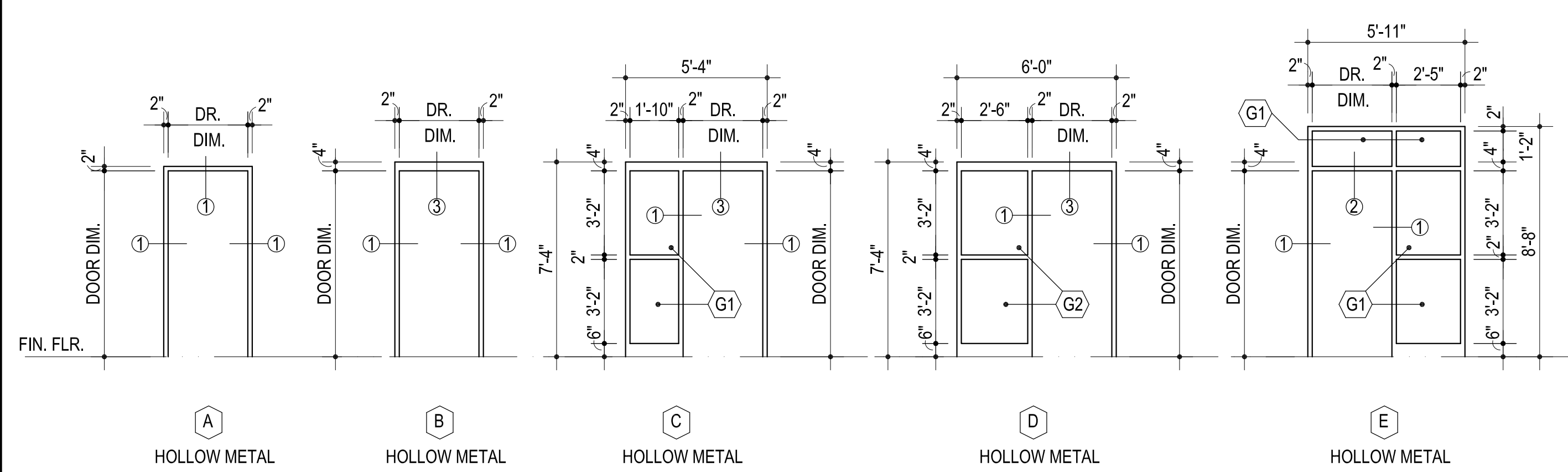


3 FRAME PROFILES

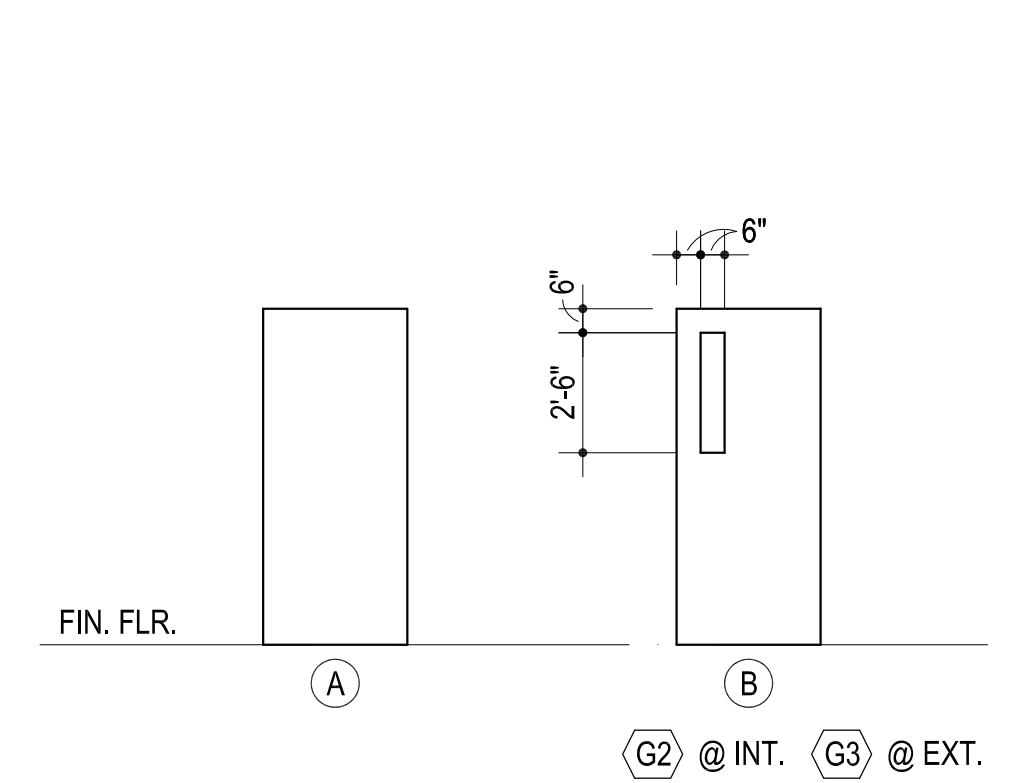


- G1 7/8" IMPACT RESISTANT INSULATING GLASS
- G2 1/4" CLEAR TEMPERED GLASS
- G3 7/8" NOM. TEMPERED INSULATING GLASS

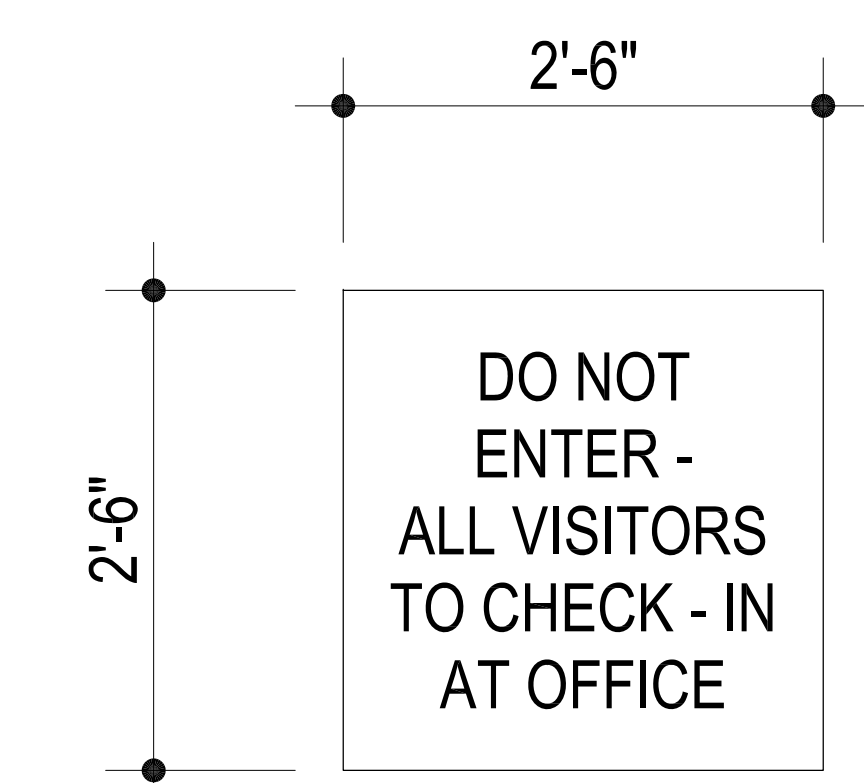
14 GLAZING SCHEDULE



4 FRAME ELEVATIONS



5 DOOR ELEVATIONS



13 EXTERIOR SIGNAGE

** - REFER 1A101 FOR LOCATIONS (ALL DOORS & / OR GATES THRU NEW PERIMETER WALLS & FENCE) & SPECIFICATIONS FOR FABRICATION INFORMATION



CG
drawn by
MA
checked by
MAY 2024
date

- revisions
- 1 ADDENDUM #1
 - 2 CB-2
 - 3 CB-3

