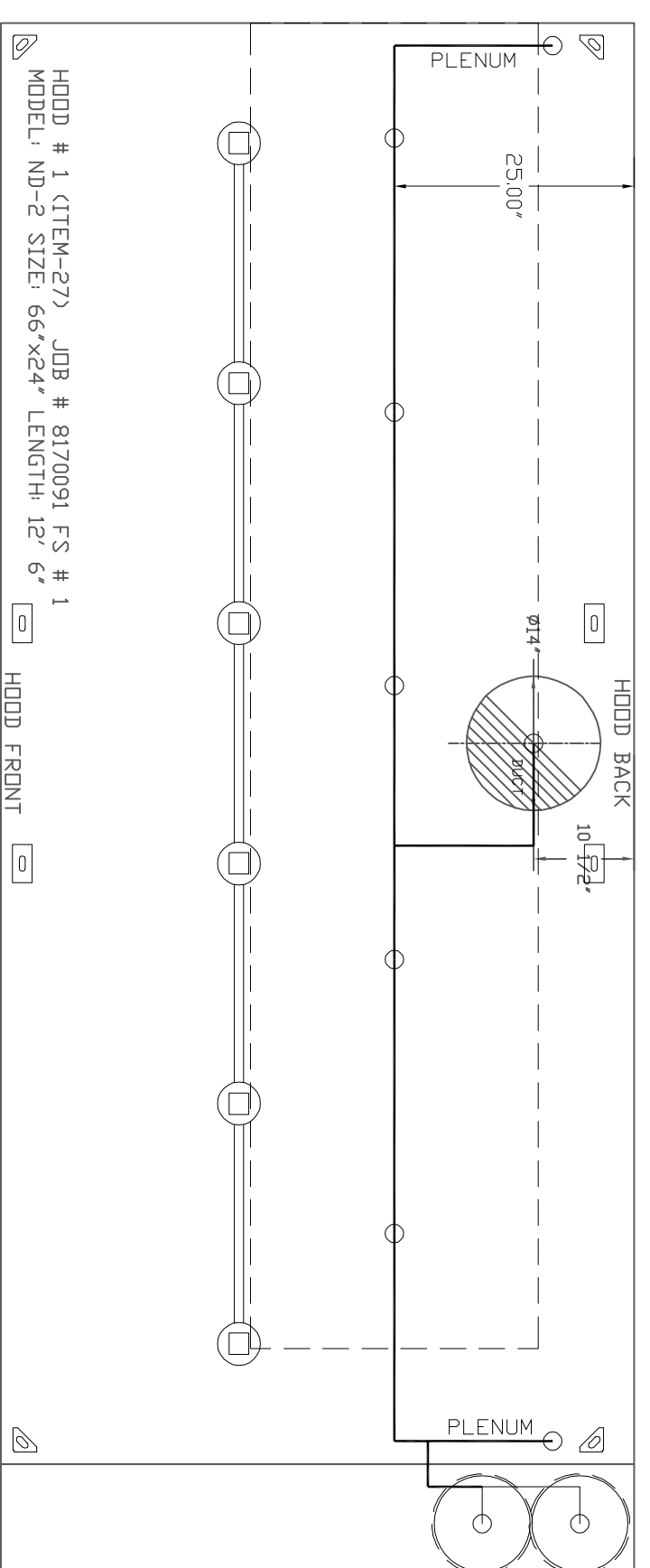
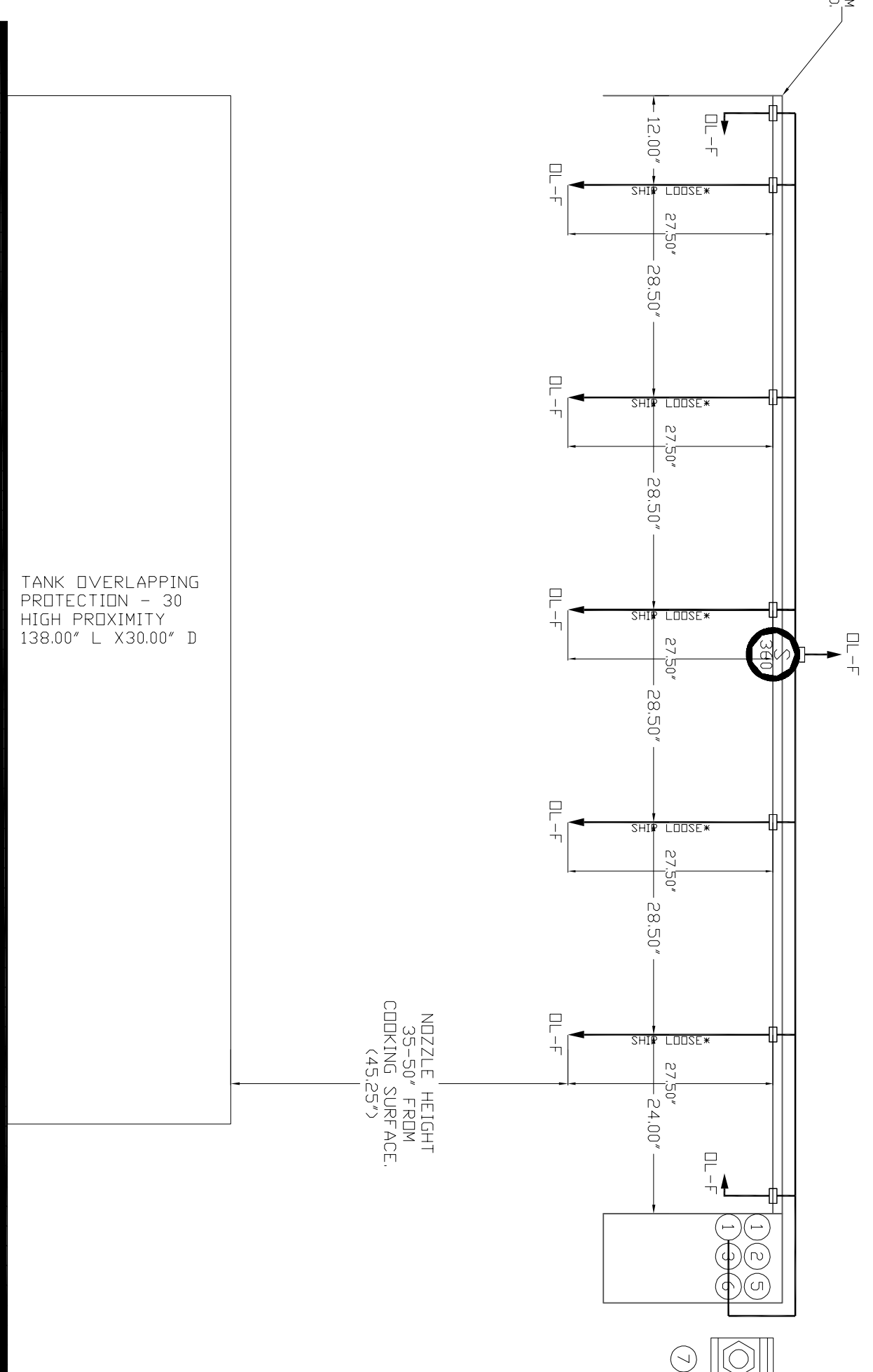


SYSTEM REQUIRES A MINIMUM OF 3 FT OF EQUIVALENT PIPE LENGTH BETWEEN TANK AND NEAREST APPLIANCE NOZZLE FOR MOST APPLIANCES (SEE MANUFACTURER'S SPECIFICATIONS FOR EQUIVALENT LENGTH. SEE MANUAL FOR DETAILS)



HOOD # 1 (ITEM-27), JOB # 8170091 FS # 1  
MODEL: ND-2 SIZE: 66"x24" LENGTH: 12' 6"



TANK OVERLAPPING PROTECTION - 30 HIGH PROXIMITY 138.00' L X 30.00' D

**NOTES**

- FIELD PIPE DRIPS AS SHOWN
- FIELD, FLEXIBLE, TEES, AND NOZZLES SUPPLIED BY GAS
- FIELD, INSTALLED, TIES AND TIES WILL PROVIDE OUT
- PLATE'D PIPING SHIPPED LOOSE TO BE FIELD-INSTALLED
- SHIP LOOSE DROP FACTORY WILL PROVIDE THE EXACT CHROME PIPE LENGTH NEEDED
- SHIPPED LOOSE TO BE FIELD-INSTALLED
- RELOCATE NOZZLES IF FLOW PATTERN IS BLOCKED BY SHELVING, SALAMANDERS, ETC.
- OVERLAPPING COVERAGE SHALL NOT BE USED ON ANY APPLIANCE WITH AN OBSTRUCTION.
- IF APPLICABLE, EXTENDED PRE-PIPED DRIPS ARE SHIPPED LOOSE
- FACTORY PIPING EXTENDS A MAXIMUM OF 6' ABOVE THE TOP OF THE HOOD.
- APPLIANCE DIMENSIONS LISTED REPRESENT THE COOKING SURFACE SIZE, NOT THE OVERALL APPLIANCE SIZE
- THIS PRE-ENGINEERED FIRE SYSTEM COMPLIES WITH U.L. 300 REQUIREMENTS.

- DL-F NOZZLE PART NUMBER REPLACES 3070-3/8H-10-SS
- DL-F NOZZLE PART NUMBER REPLACES 3070-3/8H-10-SS
- JOB #. 8170091
- JOB NAME/ OLD SCHOOL BUILDING.
- SYSTEM SIZE: TANK-SP-2 DESIGN FP: 37, MAXIMUM FP: 40
- HOOD # 1 12' 6.00" LONG x 66" WIDE x 24" HIGH.
- RISER # 1 SIZE: 14" DIA.
- HOOD # 1 METAL BLOW-OFF CAPS INCLUDED.
- HEAVY-DUTY APPLIANCES (RATED 600°F) WILL REQUIRE AN ADDITIONAL DOWNSTREAM FIRESTAIN IN THE EVENT THAT THE DUCTWORK CONTAINS ANY HORIZONTAL RUNS OVER 25 FT IN LENGTH.
- MEDIUM TO LIGHT-DUTY APPLIANCES (RATED 450°F) WILL NOT REQUIRE ANY ADDITIONAL DOWNSTREAM DETECTION.

AGENT DISTRIBUTION PIPING LIMITATIONS		
PIPE SECTION	MAX PIPE LENGTH (FT)	
MAX SUPPLY LINE TO FIRST OVERLAPPING NOZZLE	42	
OVERLAPPING NOZZLE APPLIANCE BRANCH	10	
DEDICATED NOZZLE APPLIANCE BRANCH	10	

**LEGEND - FIRE CABINET TANK SYSTEM**

- 1 4 GALLON TANK.
- 2 PRIMARY ACTUATOR RELEASE.
- 3 SECONDARY ACTUATOR RELEASE.
- 4 PRESSURE SUPERVISION SWITCH.
- 5 PRIMARY HOSE ASSEMBLY.
- 6 SECONDARY HOSE ASSEMBLY.
- 7 REMOTE MANUAL ACTUATION DEVICE.

REVISIONS	DATE

Old School Building  
201 N Broadway Ave,  
Moore, OK, 73160

DATE: 8/12/2025  
DWG.#: 81770091  
DRAWN BY: R.JH-80  
SCALE: 3/4" = 1'-0"  
MASTER DRAWING

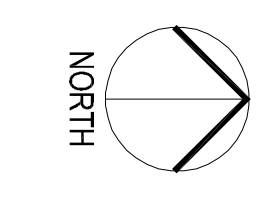
SHEET NO. 5

CEDAR CREEK  
CIVIL  
KFC ENGINEERING  
STRUCTURAL  
SALAS OBREN  
MECHANICAL/ELECTRICAL

FS  
drawn by  
FS  
checked by  
November 2025  
date  
revisions

OLD SCHOOL UPGRADES

FS505



1

FOODSERVICE EQUIPMENT VENTILATOR PLAN  
1/4" = 1'-0"

OWNERSHIP USE OF DOCUMENTS:  
AGP EXPRESSLY RESERVES ITS COPYRIGHT AND OTHER PROPERTY RIGHTS OF ALL PLANS AND DRAWINGS DESIGNED AND/OR PRODUCED. PLANS AND DRAWINGS ARE NOT TO BE REPRODUCED IN ANY FORM OR MANNER WITHOUT THE EXPRESS WRITTEN CONSENT OF AGP.