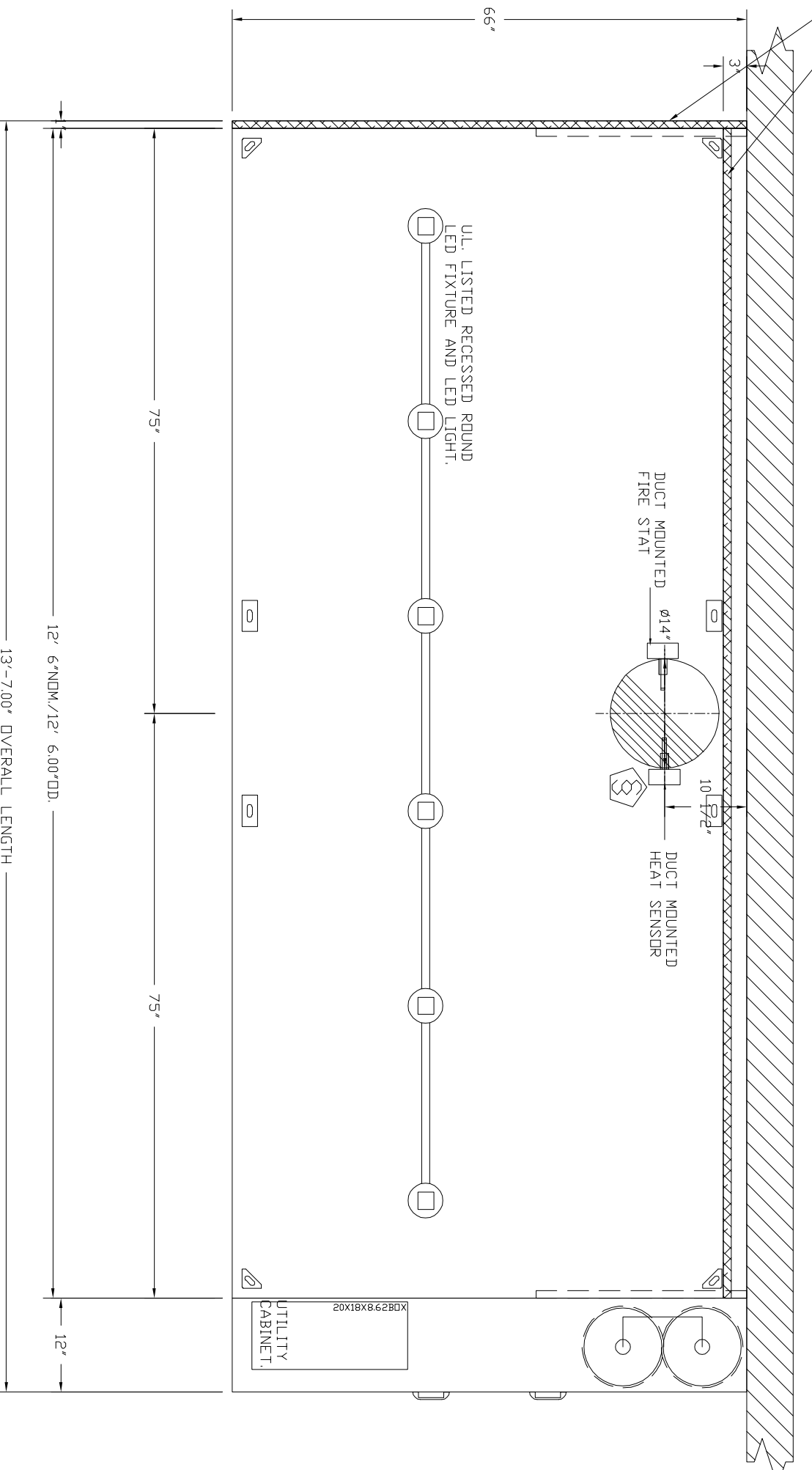


1" LAYER OF INSULATION FACTORY  
 INSTALLED IN INTERNAL BACK STANOFF  
 CLEARANCE TO COMBUSTIBLE SURFACES.

1" LAYER OF INSULATION  
 FACTORY INSTALLED IN  
 100' REQUIRMENTS CLEARANCE  
 TO COMBUSTIBLE SURFACES

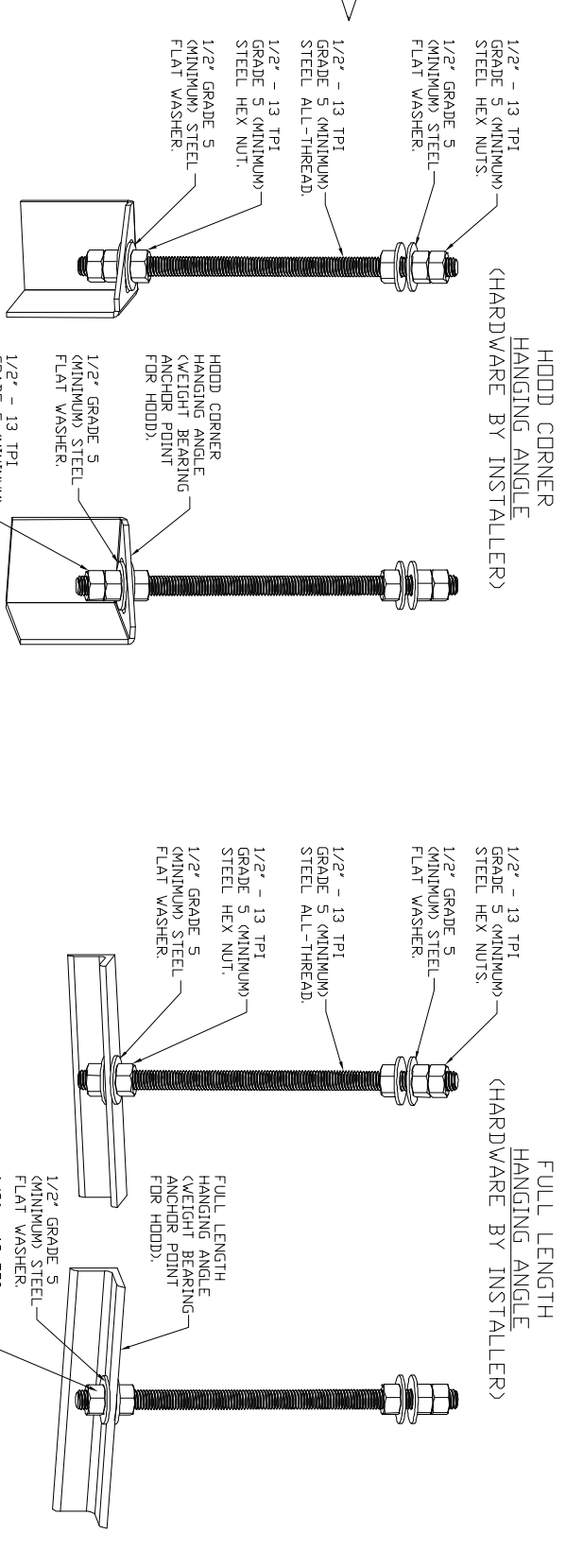


PLAN VIEW - HOOD #1 (ITEM-27)  
 12' 6.00\"/>

NOTE: ADDITIONAL HANGING ANGLES PROVIDED FOR HOODS 12' AND LONGER

**VERIFY CEILING HEIGHT**

HEIGHT REQUIRED TO VERIFY THAT HOOD FITS SPACE AND TO SIZE THE ENCLOSURE PANELS

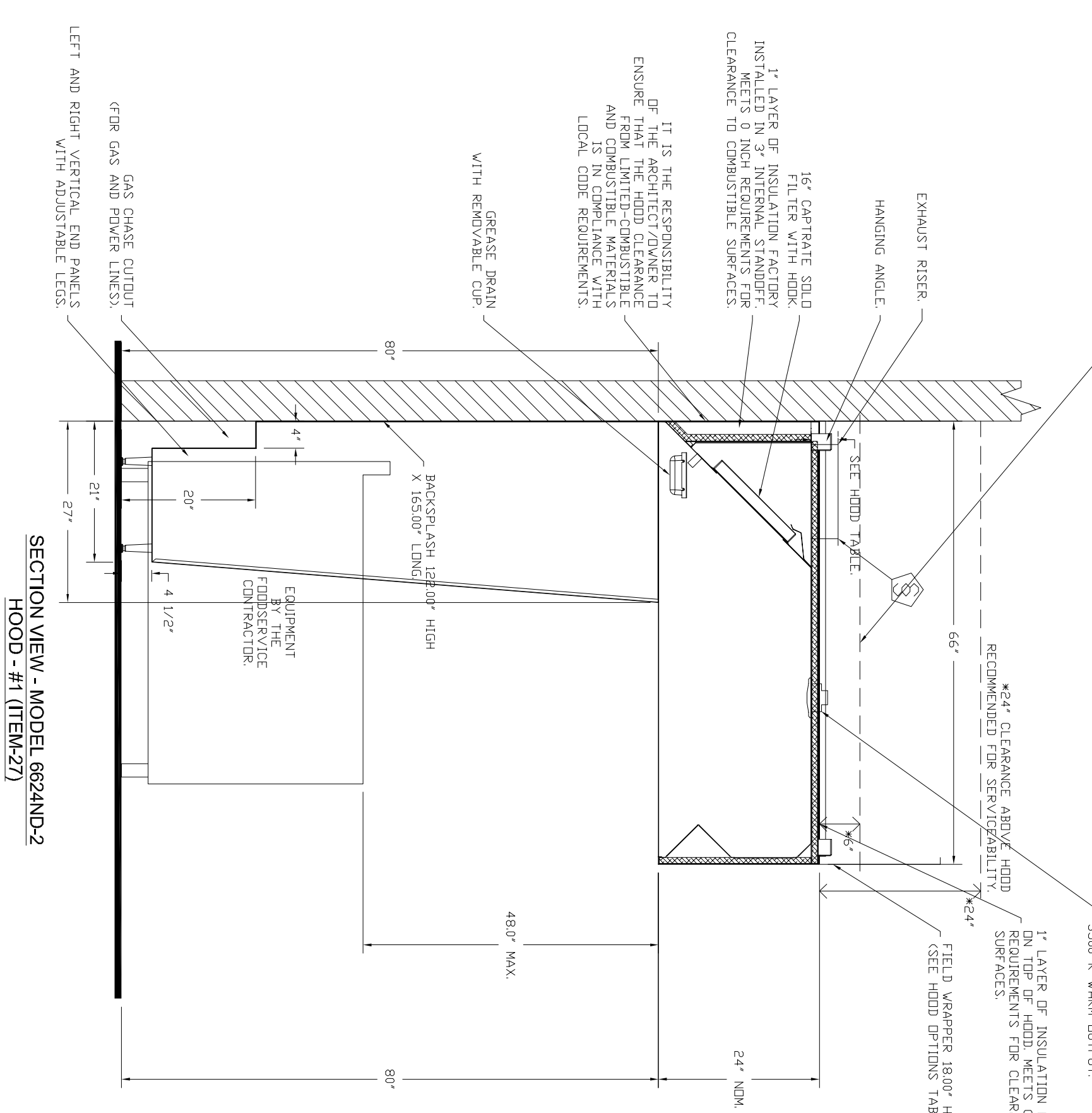


ASSEMBLY INSTRUCTIONS

ASSEMBLY INSTRUCTIONS

HANGING ANGLE MUST BE SUPPORTED WITH 1/2" - 13 TPI GRADE 5 (MINIMUM) ALL-THREAD SANDWICH HANGING ANGLES AND CEILING ANCHOR POINTS WITH 1/2" GRADE 5 (MINIMUM) STEEL FLAT WASHERS AND 1/2" - 13 TPI (MINIMUM) STEEL FLAT WASHERS AND 1/2" - 13 TPI (MINIMUM) STEEL HEX NUTS. HANGING ANGLE DOUBLE HEX NUT CONFIGURATION, BEHATH HOOD ANCHORS AND ABOVE CEILING ANCHORS, MAINTAIN 1/4" OF EXPOSED THREADS BELOW BOTTOM HEX NUT. TORQUE ALL HEX NUTS TO 57 FT-LBS.

REQUIRED FOR FIRE SYSTEM PIPING



SECTION VIEW - MODEL 6624ND-2  
 HOOD - #1 (ITEM-27)

IT IS THE RESPONSIBILITY  
 OF THE ARCHITECT/OWNER TO  
 ENGINEER FROM LIMITED-COMBUSTIBLE  
 AND 15" IN CLEARANCE WITH  
 LOCAL CODE REQUIREMENTS

LEFT AND RIGHT VERTICAL END PANELS  
 WITH ADJUSTABLE LEGS



Tulsa Office  
 12101 East 51st Street, Suite 101A, Tulsa, OK, 74146 PHONE: (918) 258 - 0291 FAX: 9182275947 EMAIL: reg80@captiveaire.com

| REVISIONS | DATE |
|-----------|------|
| Δ         |      |
| Δ         |      |
| Δ         |      |

|  |
|--|
| Old School Building<br>201 N Broadway Ave,<br>Moore, OK, 73160 |
| DATE: 8/12/2025<br>DWG.#:<br>8170021                           |
| DRAWN BY: R.JH-80<br>SCALE:<br>3/4" = 1'-0"                    |
| MASTER DRAWING   |
| SHEET NO.<br>2   |

**AGP**  
 the Abia Griffin  
 Partnership L.L.C.  
 313 S. E. 5th Street  
 MOORE, OK, 73160  
 405.735.3477  
 AGP@theAGP.net  
 www.theAGP.net

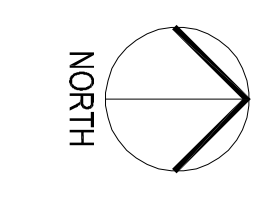
CEGAR CREEK  
 CIVIL  
 KFC ENGINEERING  
 STRUCTURAL  
 SALAS OBREN  
 MECHANICAL/ELECTRICAL

RS  
 drawn by  
 RS  
 checked by  
 November 2025  
 date  
 revisions



OLD SCHOOL  
 UPGRADES

FS502



1

FOODSERVICE EQUIPMENT VENTILATOR PLAN  
 1/4" = 1'-0"

OWNERSHIP USE OF DOCUMENTS.  
 AGP EXPRESSLY RESERVES ITS  
 COPYRIGHT AND OTHER PROPERTY  
 RIGHTS OF ALL PLANS AND DRAWINGS  
 DESIGNED AND/OR PRODUCED. PLANS  
 AND DRAWINGS ARE NOT TO BE  
 REPRODUCED IN ANY FORM OR MANNER  
 WITHOUT THE EXPRESS WRITTEN  
 CONSENT OF AGP.