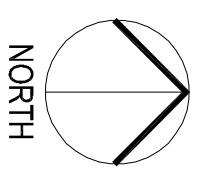
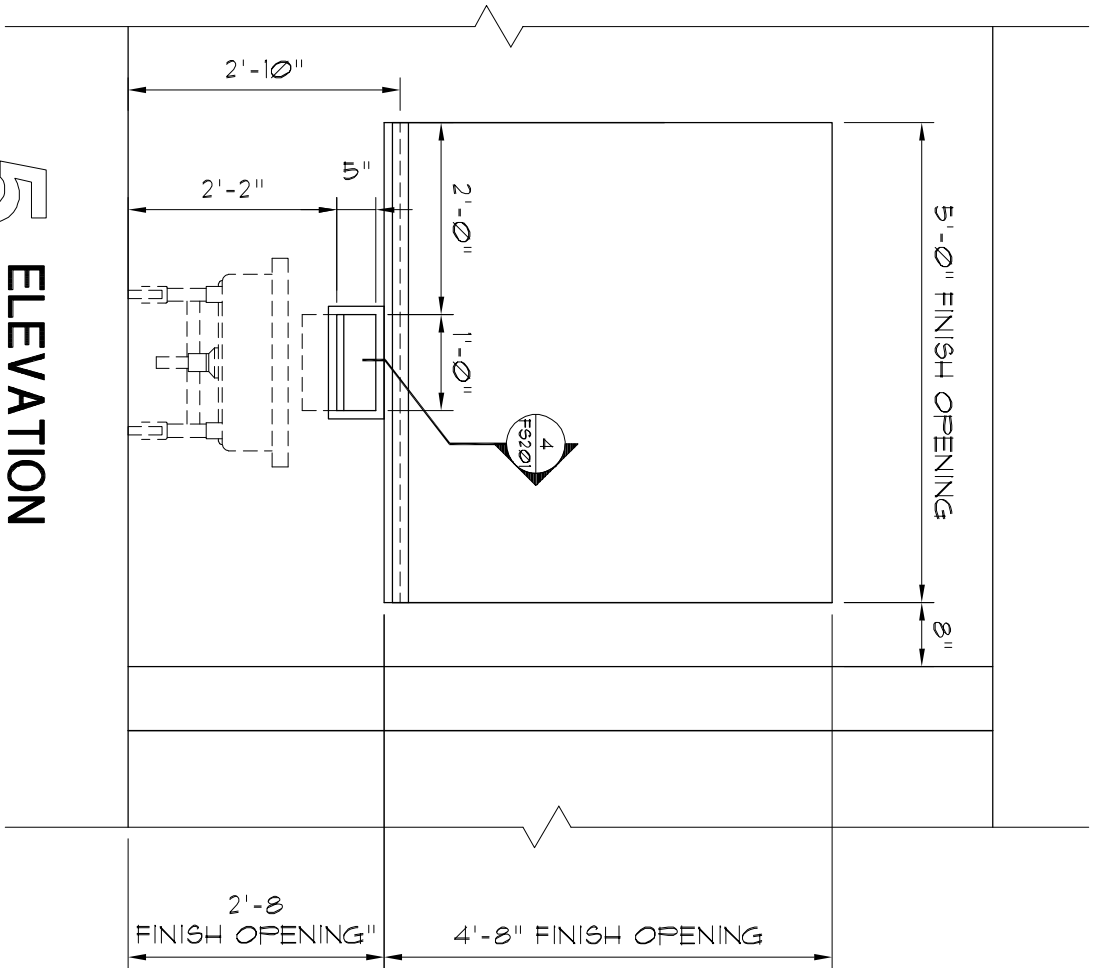


- GENERAL NOTES**
1. THE FOODSERVICE CONTRACTORS MUST COORDINATE AND VERIFY ALL DIMENSIONS WITH THE FOODSERVICE EQUIPMENT SHOP DRAWINGS AND THE MANUFACTURER'S DATA. DIMENSIONS ARE SHOWN FOR DESIGN AND BIDDING PURPOSES ONLY.
 2. THE GENERAL CONTRACTOR TO PROVIDE AND INSTALL 3/4" THICK WOOD BACKING IN THE WALL FOR THE MOUNTING OF THE EQUIPMENT FURNISHED BY THE FOODSERVICE CONTRACTOR. THE FOODSERVICE CONTRACTOR TO FURNISH EXACT DIMENSIONED LOCATIONS.
 3. THE WALK-IN DOORS MUST BE LEFT OPEN WHILE THE INTERIOR CONCRETE WALK-IN FLOOR CURES. FAILURE TO DO SO MAY DAMAGE THE INTERIOR OF THE WALK-IN REQUIRING THE UNIT TO BE REPLACED.

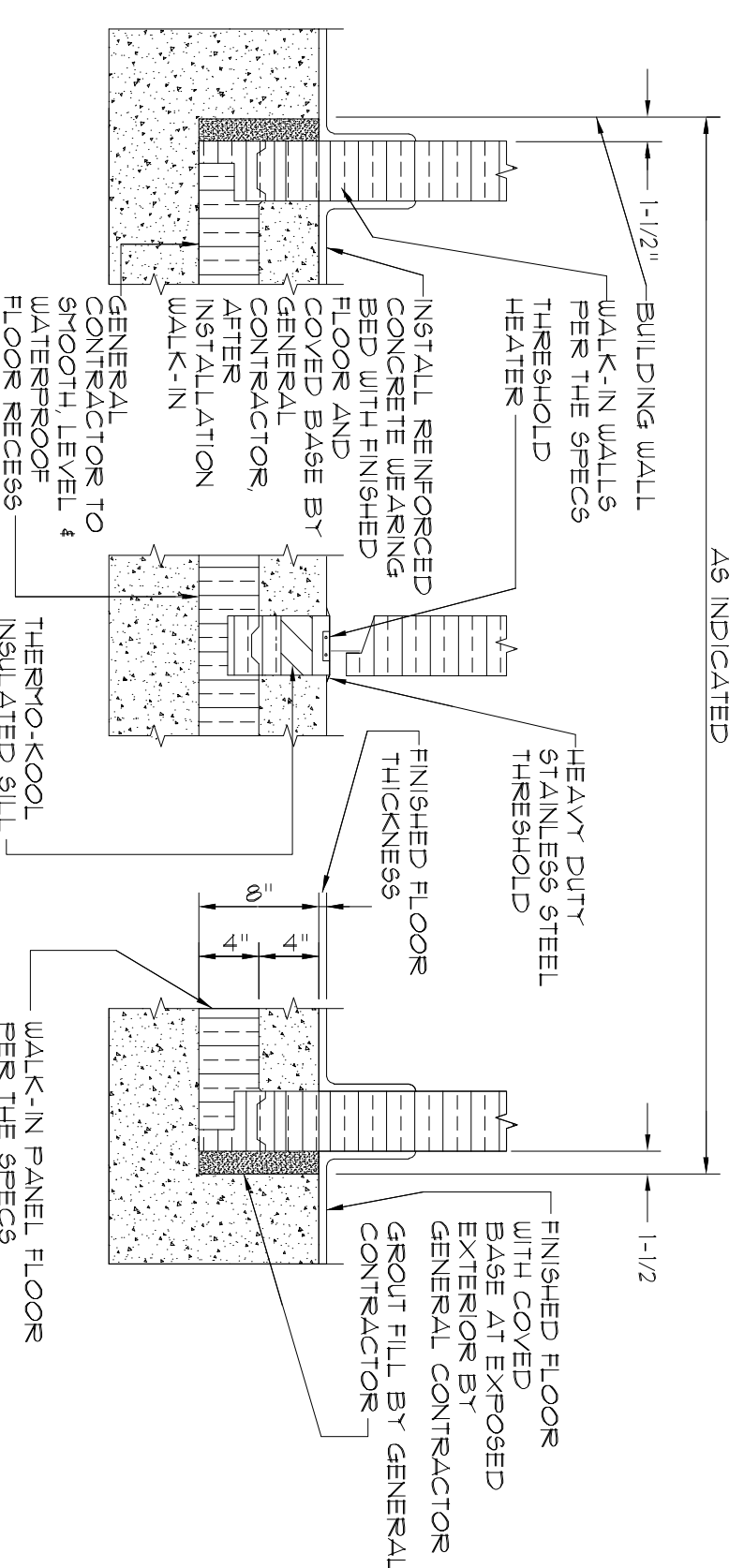


1

FOODSERVICE EQUIPMENT SPECIAL CONDITIONS PLAN
1/4" = 1'-0"

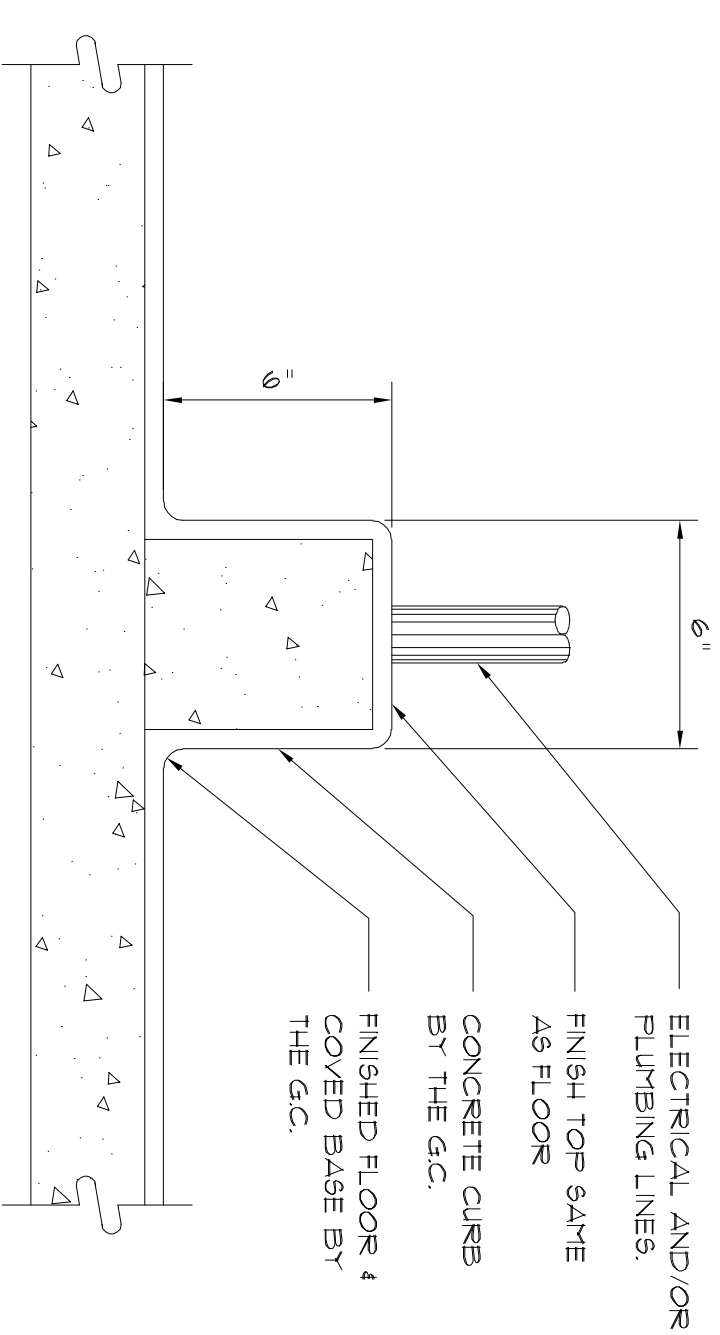


5 ELEVATION
1/2" = 1'-0"

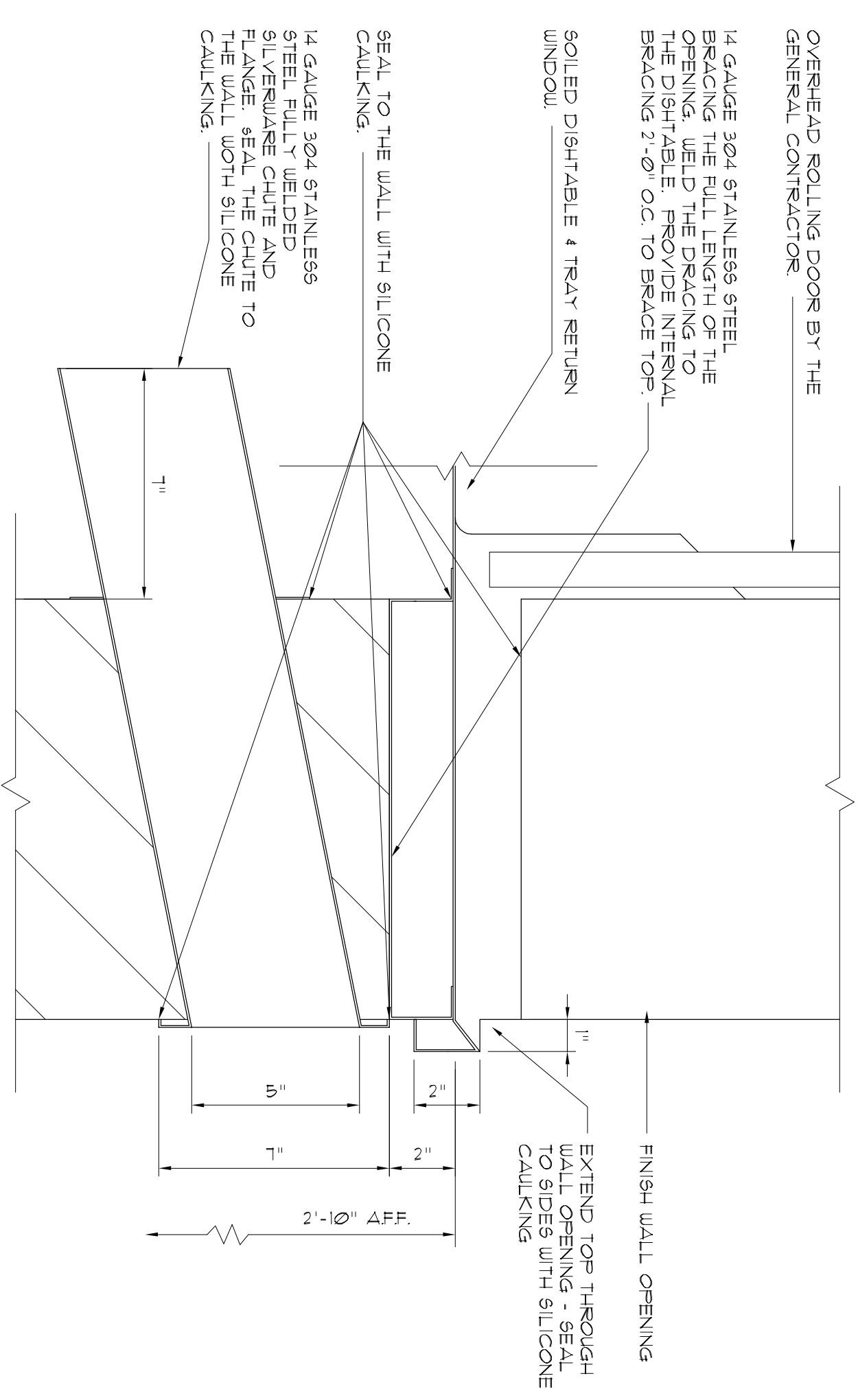


6

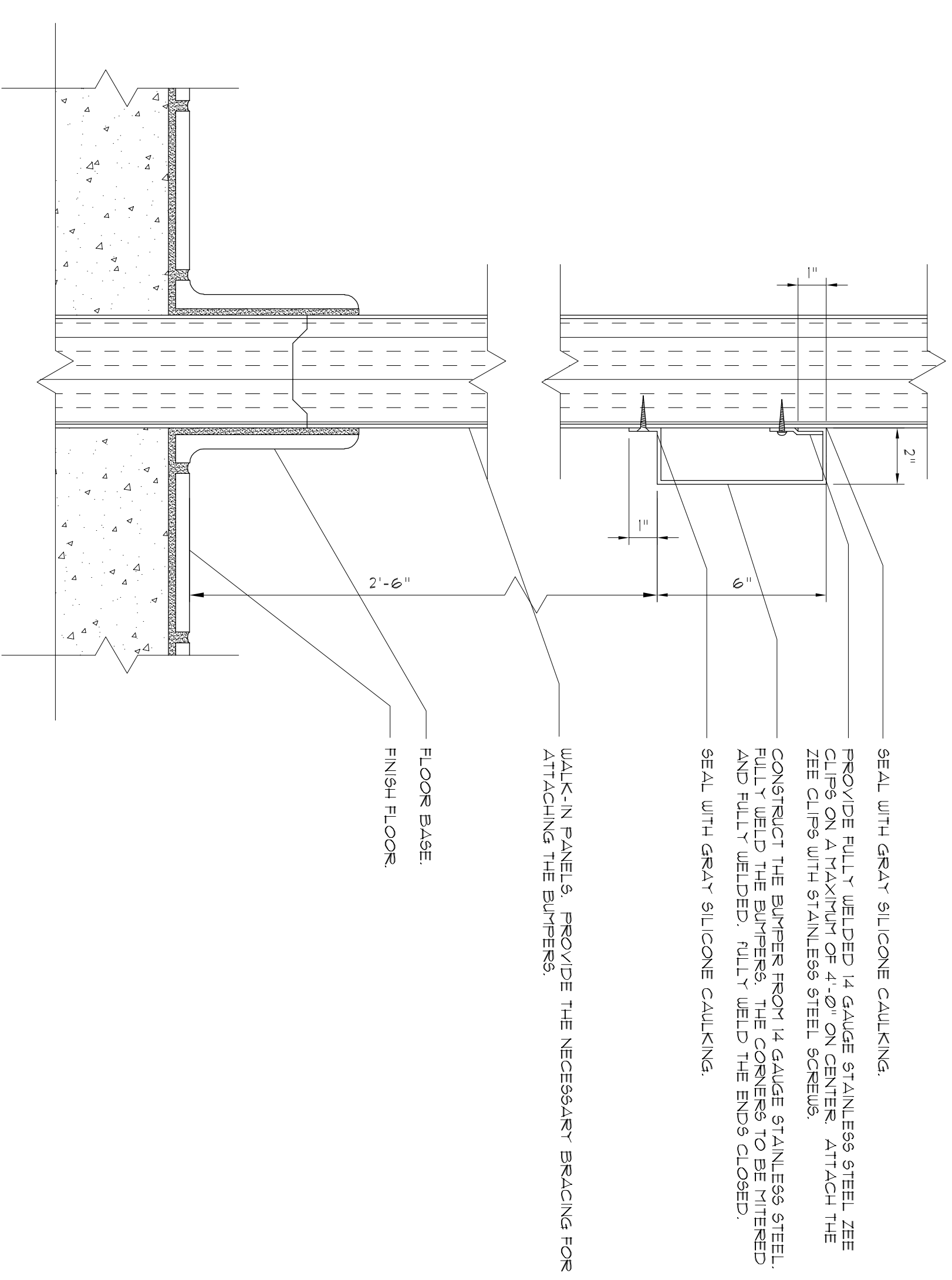
DETAIL - WALK-IN RECESS @ COOLERS & FREEZERS
NO SCALE



3 SECTION - UTILITY CURB
NO SCALE



4 SECTION - TRAY RETURN COUNTER
NO SCALE



7

DETAIL - BUMPER RAILS AT THE WALK-INS
NO SCALE

AGP
the Abha Griffin
Partnership L.L.C.
313 S. E. 5th Street
MOORE, OK 73160
405.735.3477
AGP@theAGP.net
www.theAGP.net

CEDAR CREEK
CIVIL
KFC ENGINEERING
STRUCTURAL
SALAS OBREN
MECHANICAL/ELECTRICAL

RS
drawn by
RS
checked by
November 2025
date

MOORE
PUBLIC SCHOOLS

OLD SCHOOL
UPGRADES

Sheet No:
FS201

OWNERSHIP USE OF DOCUMENTS:
AGP EXPRESSLY RESERVES ITS
COPYRIGHT AND OTHER PROPERTY
RIGHTS OF ALL PLANS AND DRAWINGS
DESIGNED AND/OR PRODUCED. PLANS
AND DRAWINGS ARE NOT TO BE
REPRODUCED IN ANY FORM OR MANNER
WITHOUT THE EXPRESS WRITTEN
CONSENT OF AGP.