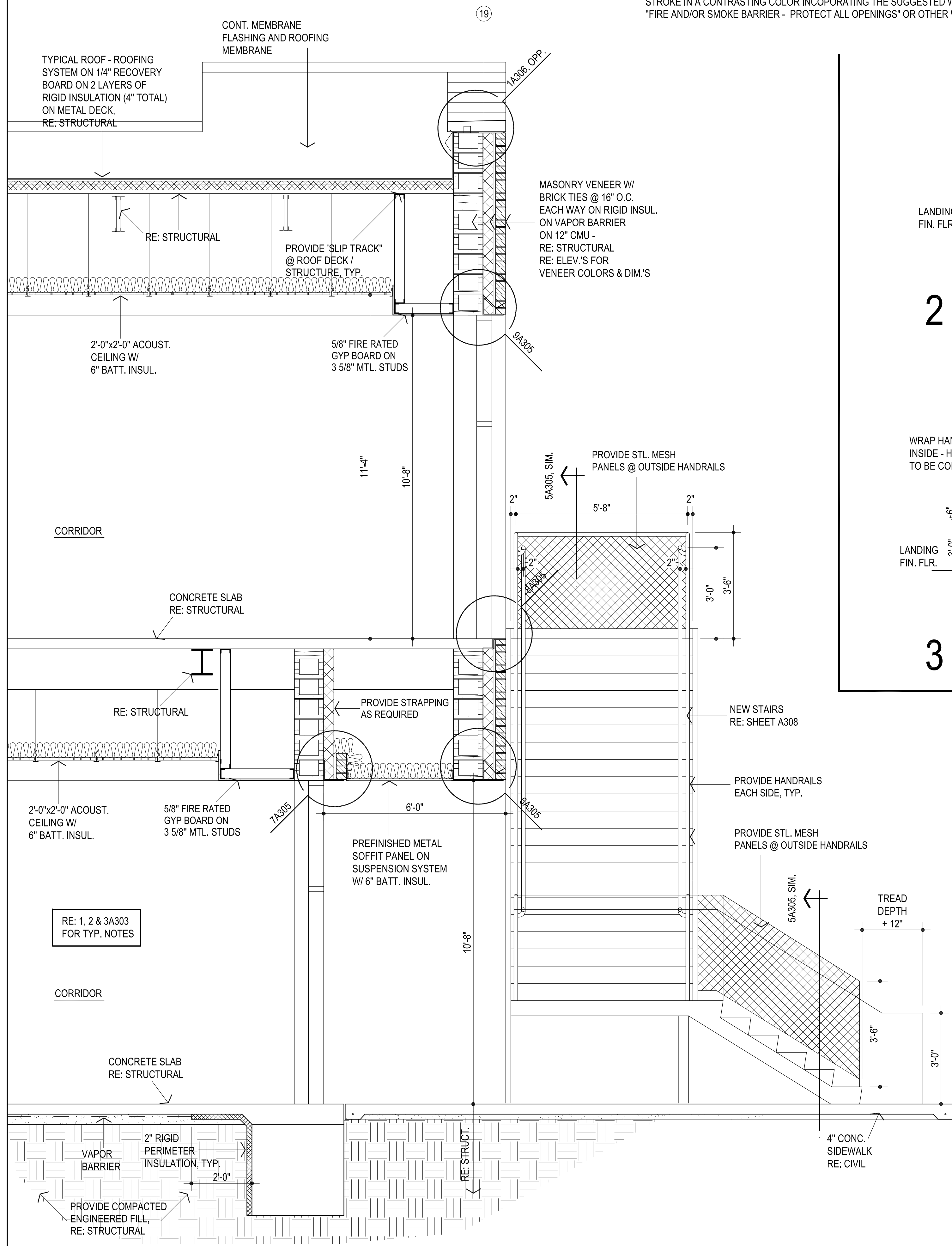
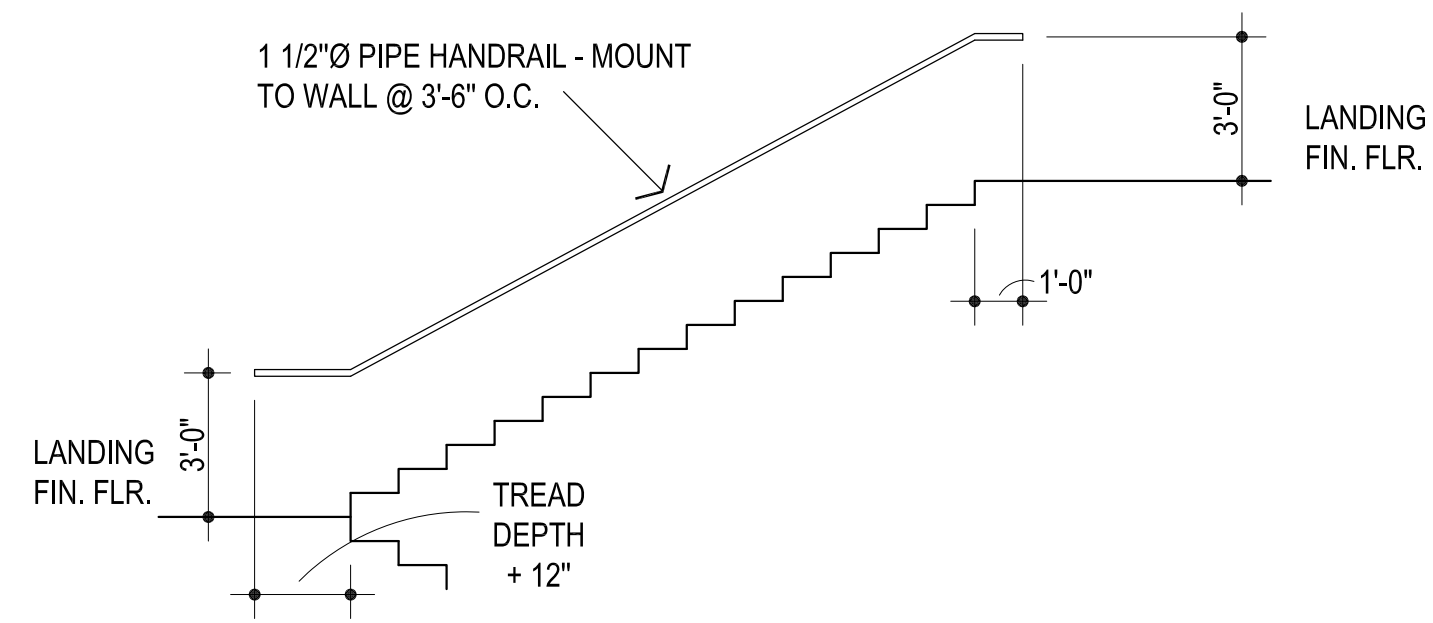


GENERAL NOTES:

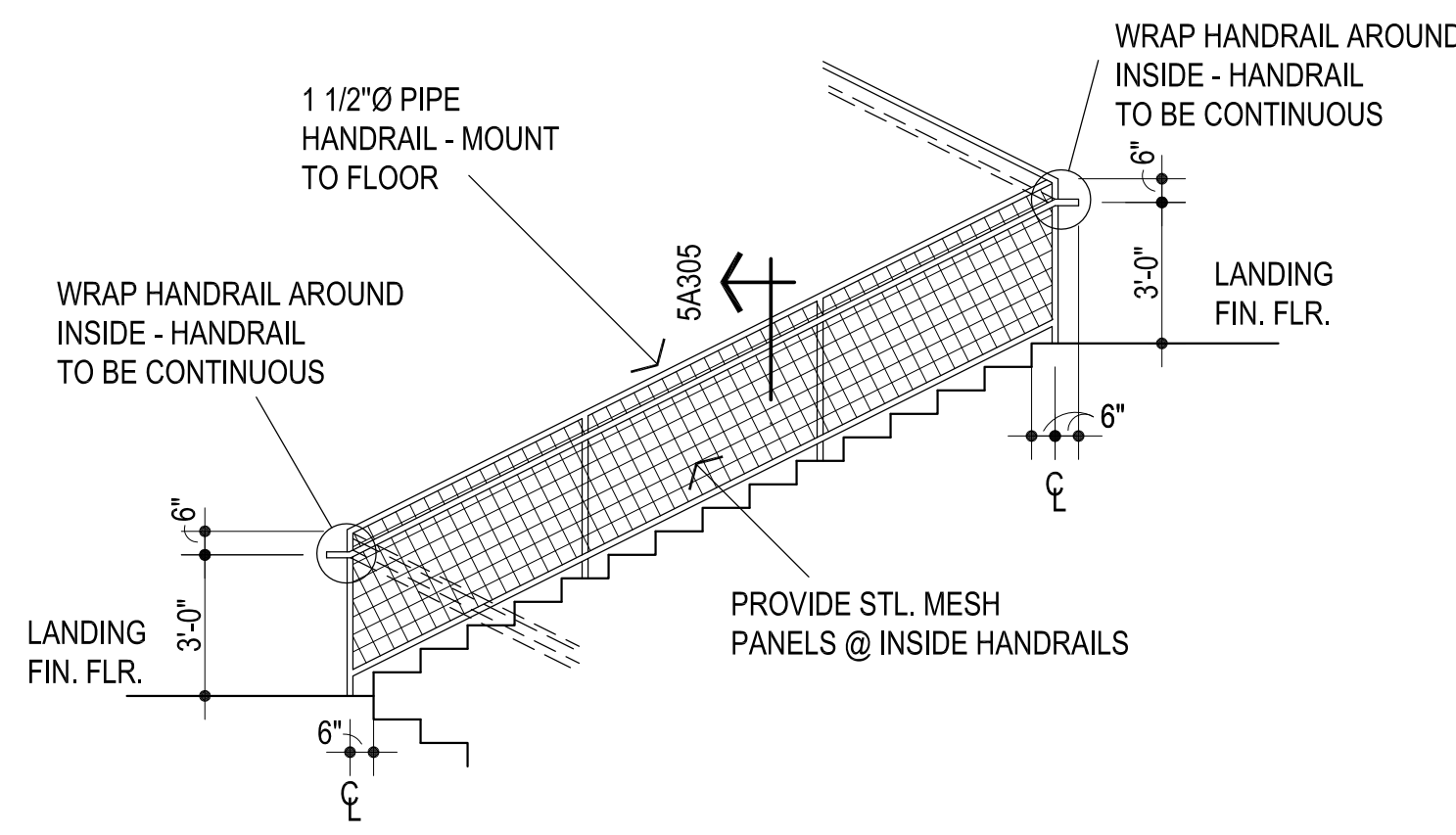
- REFER STRUCTURAL DRAWINGS FOR TOP OF FOOTING ELEVATIONS - PROVIDE ALL MATERIALS REQUIRED FOR WALL SYSTEM TO EXTEND TO TOP OF FOOTING
- DO NOT SCALE DRAWINGS TO OBTAIN MATERIAL QUANTITIES. USE DRAWINGS WHICH ARE DIMENSIONED OR COORDINATE W/ EXISTING CONDITIONS &/OR ARCHITECT & ENGINEERS.
- PROVIDE LABELING AS PER IBC 703.7 MARKING AND IDENTIFICATION. BE LOCATED WITHIN 15 FEET (4572 MM) OF THE END OF EACH WALL AND AT INTERVALS NOT EXCEEDING 30 FEET (9144 MM) MEASURED HORIZONTALLY ALONG THE WALL OR PARTITION. INCLUDE LETTERING NOT LESS THAN 3 INCHES (76 MM) IN HEIGHT WITH A MINIMUM 3/8-INCH (9.5 MM) STROKE IN A CONTRASTING COLOR INCORPORATING THE SUGGESTED WORDING. "FIRE AND/OR SMOKE BARRIER - PROTECT ALL OPENINGS" OR OTHER WORDING.
- RE: SHEET A100 & A101 FOR PARTITIONS REQUIRED TO CLOSE-OUT TO BOTTOM OF DECKING OR STRUCTURE ABOVE.



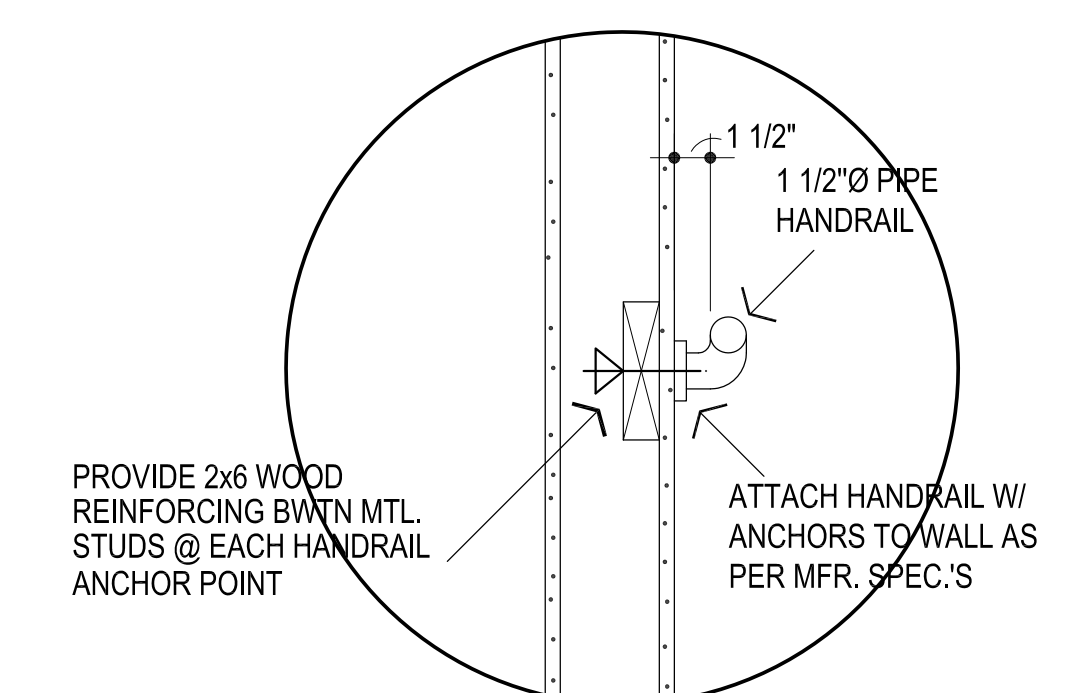
1 WALL SECTION
1/2" = 1'-0"



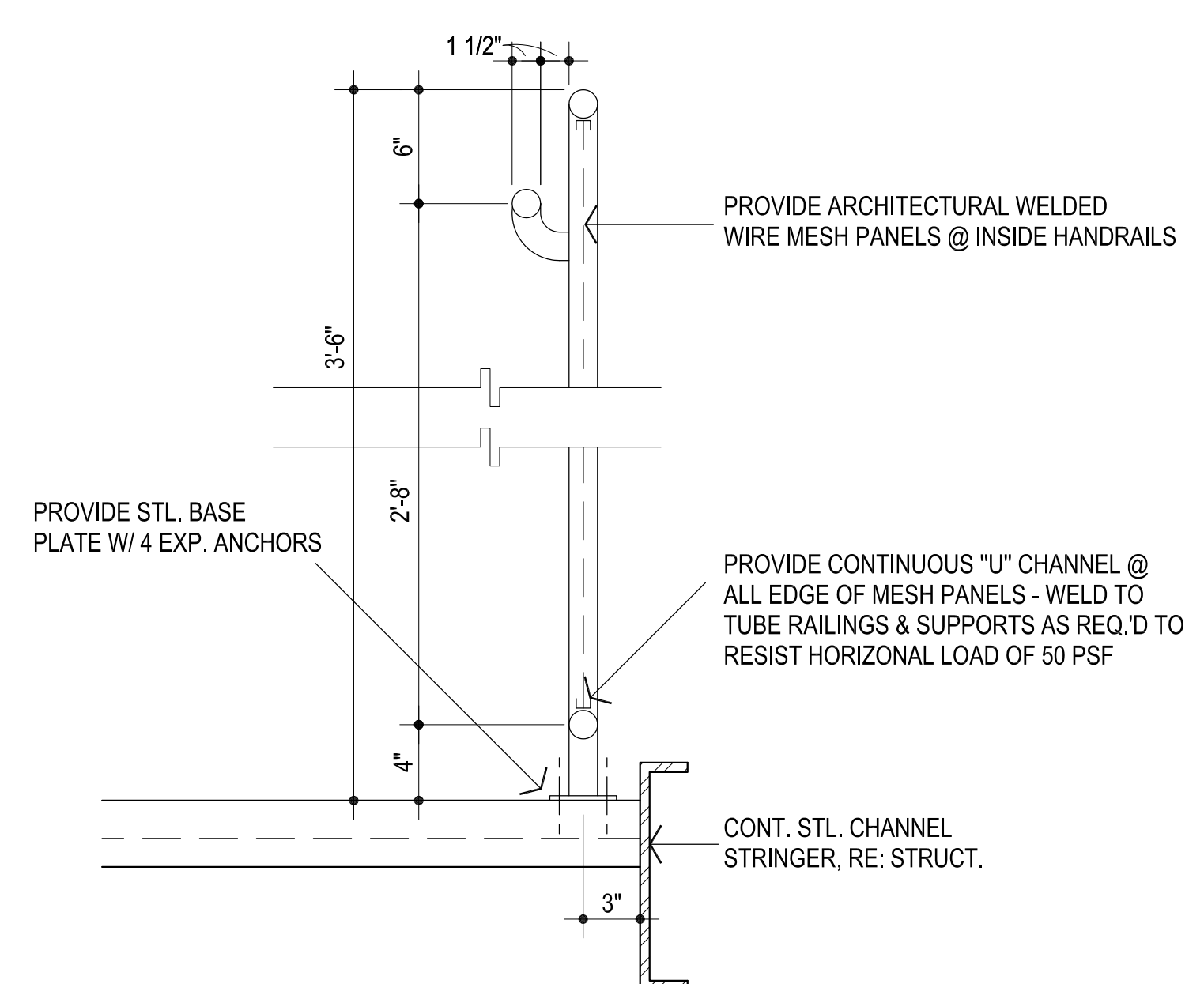
2 TYPICAL WALL MOUNTED HANDRAIL
1/4" = 1'-0"



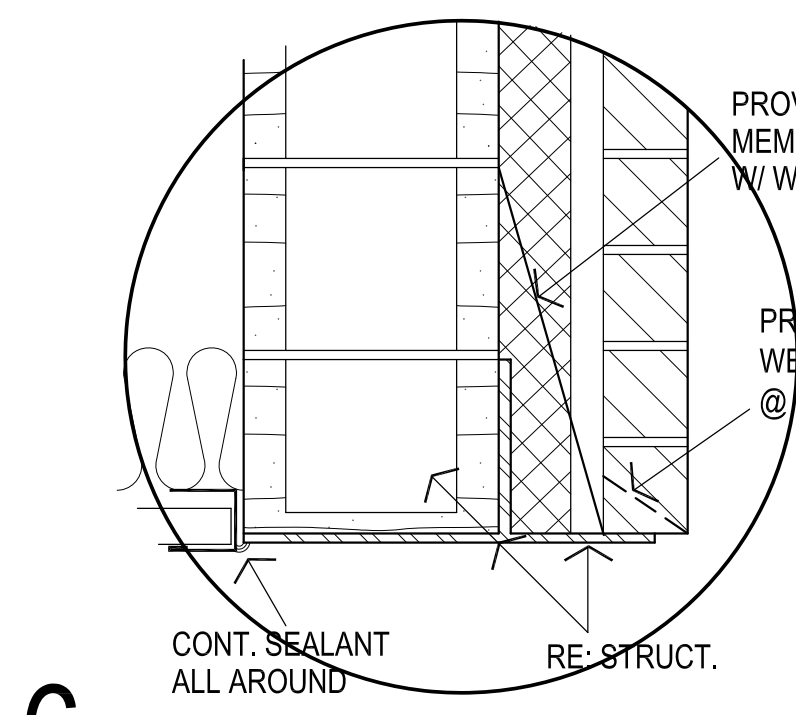
3 TYPICAL HANDRAIL DETAIL @ INTERIOR RUN
1/4" = 1'-0"



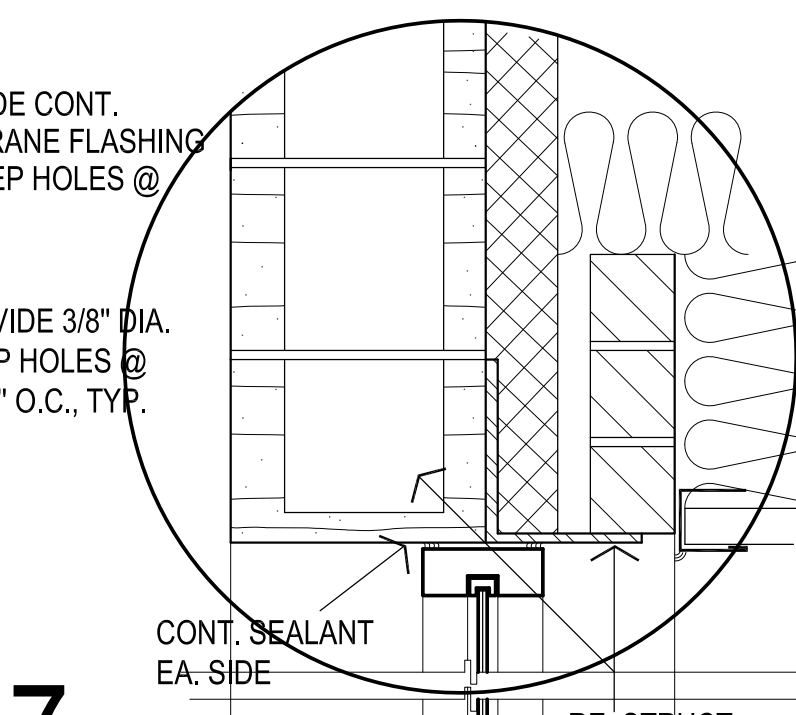
4 HANDRAIL ATTACHMENT DETAIL
1 1/2" = 1'-0"



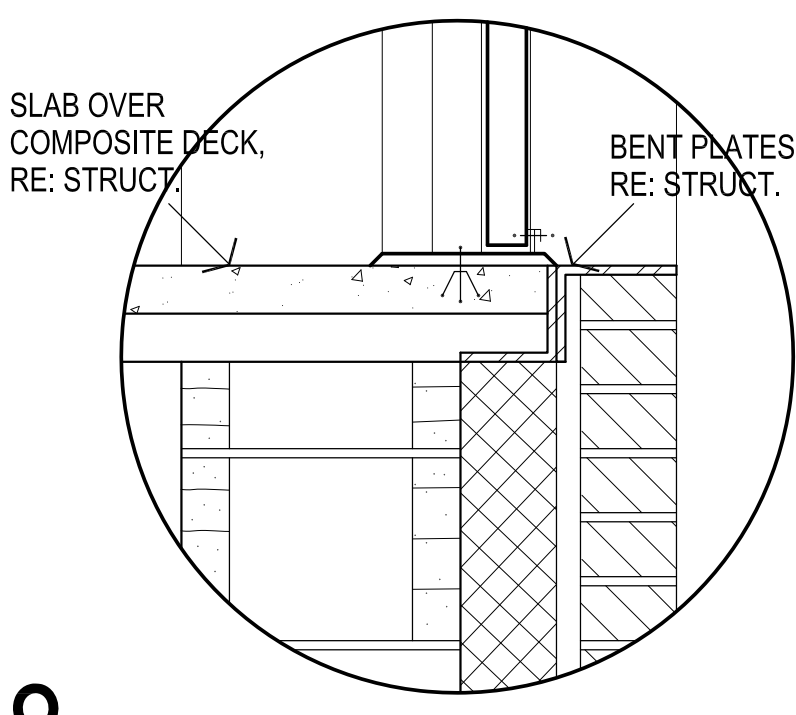
5 HANDRAIL DTL. @ INSIDE RUN, TYP.
1-1/2" = 1'-0"



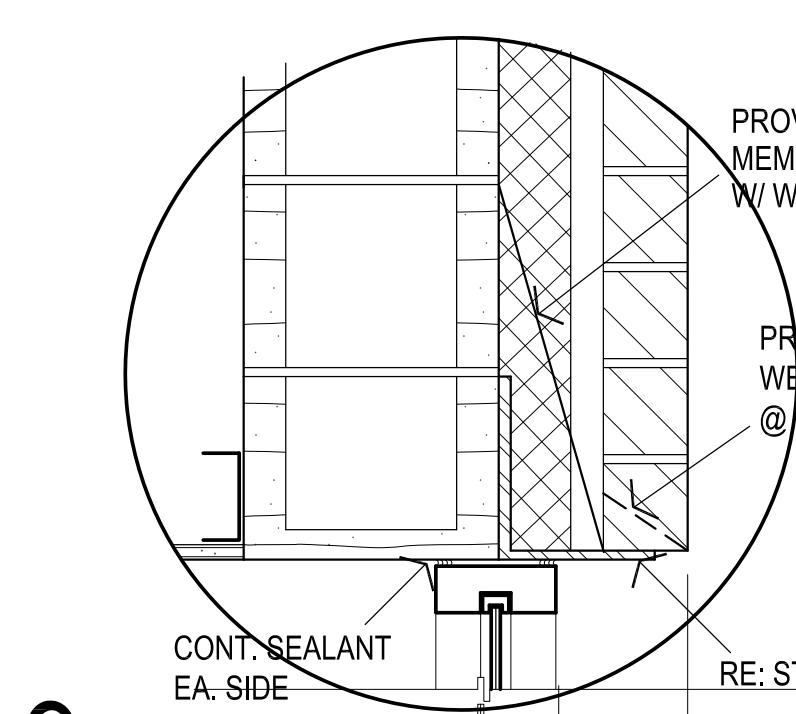
6 CONT. SEALANT ALL AROUND
RE: STRUCT.
PAINT ALL EXPOSED METAL & CMU, TYP.



7 CONT. MEMBRANE FLASHING W/ WEEP HOLES @ EA. SIDE
RE: STRUCT.
PAINT ALL EXPOSED METAL & CMU, TYP.



8 SLAB OVER COMPOSITE DECK, RE: STRUCT.
BENT PLATES RE: STRUCT.
PAINT ALL EXPOSED METAL & CMU, TYP.



9 CONT. MEMBRANE FLASHING W/ WEEP HOLES @ EA. SIDE
RE: STRUCT.
PAINT ALL EXPOSED METAL & CMU, TYP.



CG	drawn by
MA	checked by
NOVEMBER 2025	date
	revisions