

CEDAR CREEK

CIVIL

KFC ENGINEERING

STRUCTURAL

SALAS O'BRIEN

MECHANICAL / ELECTRICAL



Michael L. Abla
12/1/25

CG

drawn by

MA

checked by

NOVEMBER 2025

date

revisions



MOORE
PUBLIC SCHOOLS

OLD SCHOOL
REPLACEMENT

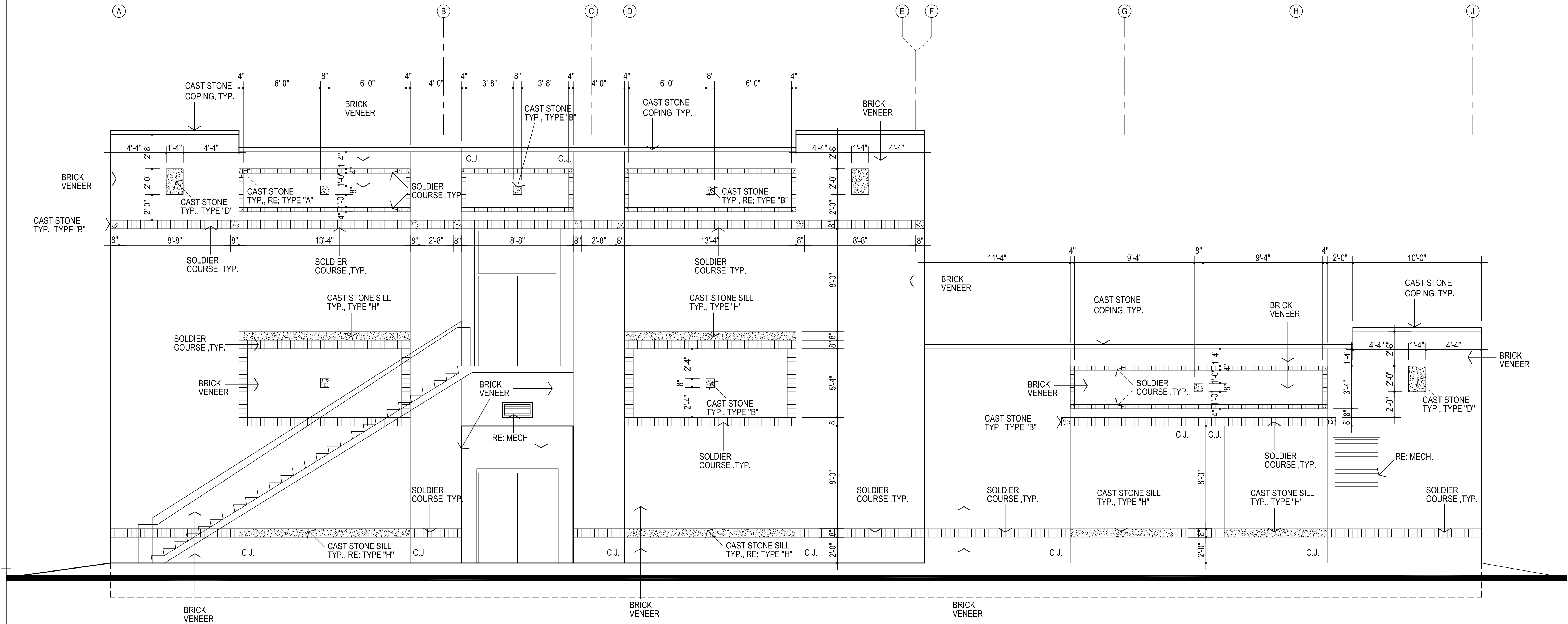
sheet no:

A204

ELEVATIONS

OWNERSHIP USE OF DOCUMENTS:

AGP EXPRESSLY RESERVES ITS
COPYRIGHT AND OTHER PROPERTY
RIGHTS OF ALL PLANS AND DRAWINGS
DESIGNED AND/OR PRODUCED. PLANS
AND DRAWINGS ARE NOT TO BE
REPRODUCED IN ANY FORM OR MANNER
WITHOUT THE EXPRESSED WRITTEN
CONSENT OF AGP.



1 NORTH ELEVATION
SOUTH ELEVATION OPPOSITE
1/4" = 1'-0"

GENERAL NOTES:

1. REFER STRUCTURAL DRAWINGS FOR TOP OF FOOTING ELEVATIONS - PROVIDE ALL MATERIALS REQUIRED FOR WALL SYSTEM TO EXTEND TO TOP OF FOOTING
2. DO NOT SCALE DRAWINGS TO OBTAIN MATERIAL QUANTITIES. USE DRAWINGS WHICH ARE DIMENSIONED OR COORDINATE W/ EXISTING CONDITIONS &/OR ARCHITECT & ENGINEERS.
3. RE: SHEET A201 & A202 FOR ADDITIONAL INFORMATION
4. RE: SHEET A202 FOR ADDITIONAL INFORMATION CONCERNING EXP. & CONTROL JT'S @ MASONRY EXTERIORS.