

CG	drawn by
MA	checked by
NOVEMBER 2025	date
	revisions



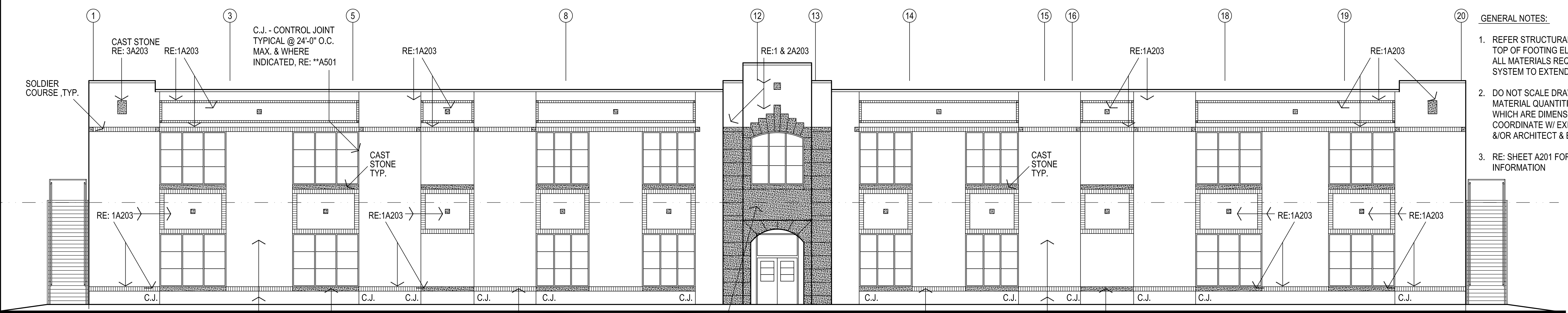
OLD SCHOOL
REPLACEMENT

sheet no:
A202

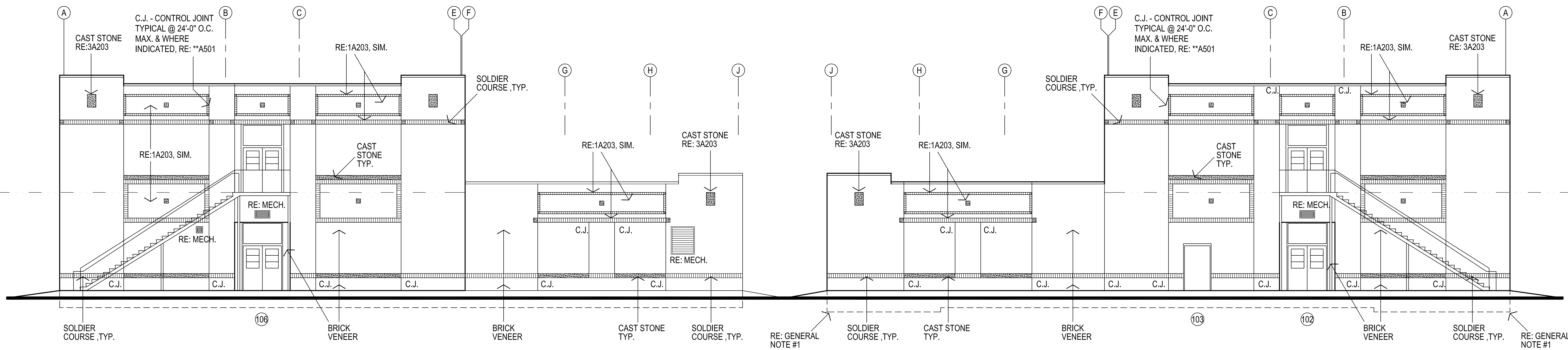
ELEVATIONS
OWNERSHIP USE OF DOCUMENTS:
AGP EXPRESSLY RESERVES ITS
COPYRIGHT AND OTHER PROPERTY
RIGHTS OF ALL PLANS AND DRAWINGS
DESIGNED AND/OR PRODUCED. PLANS
AND DRAWINGS ARE NOT TO BE
REPRODUCED IN ANY FORM OR MANNER
WITHOUT THE EXPRESSED WRITTEN
CONSENT OF AGP.

GENERAL NOTES:

- REFER STRUCTURAL DRAWINGS FOR TOP OF FOOTING ELEVATIONS - PROVIDE ALL MATERIALS REQUIRED FOR WALL SYSTEM TO EXTEND TO TOP OF FOOTING
- DO NOT SCALE DRAWINGS TO OBTAIN MATERIAL QUANTITIES. USE DRAWINGS WHICH ARE DIMENSIONED OR COORDINATE W/ EXISTING CONDITIONS &/OR ARCHITECT & ENGINEERS.
- RE: SHEET A201 FOR ADDITIONAL INFORMATION

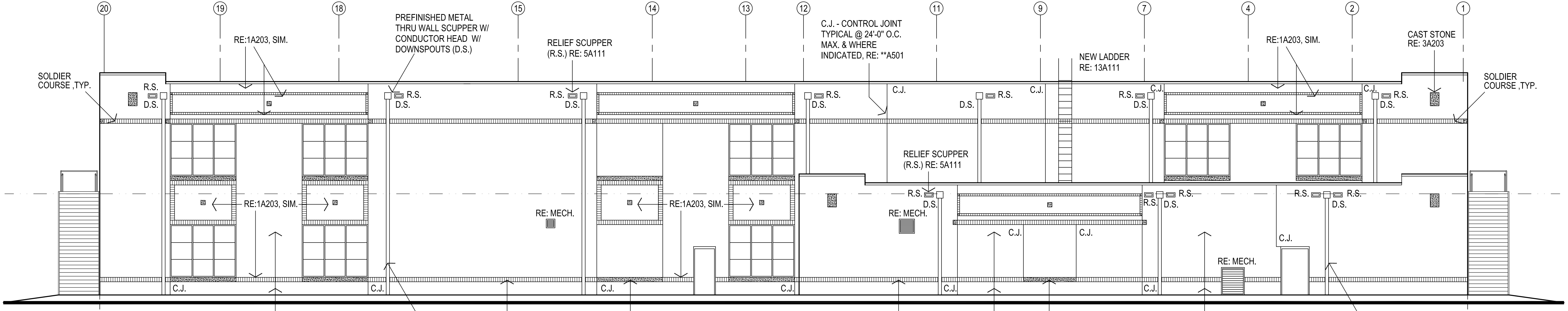


1 EAST ELEVATION - MATERIALS
1/4" = 1'-0"



2 NORTH ELEVATION - MATERIALS
1/4" = 1'-0"

3 SOUTH ELEVATION - MATERIALS
1/4" = 1'-0"



4 WEST ELEVATION - MATERIALS
1/4" = 1'-0"

PROVIDE ALL MATERIALS TO CONNECT DOWNSPOUTS TO NEW STORM WATER SYSTEM, RE: CIVIL