



*Michael L. Abila*  
12/1/25

CG

drawn by

MA

checked by

NOVEMBER 2025

date

revisions



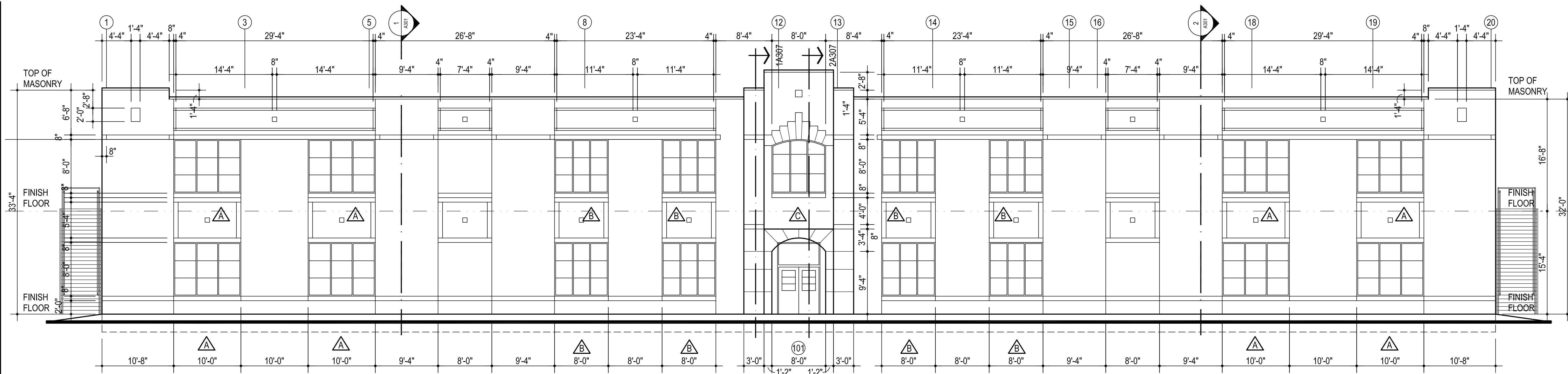
OLD SCHOOL  
REPLACEMENT

sheet no:

**A201**

ELEVATIONS

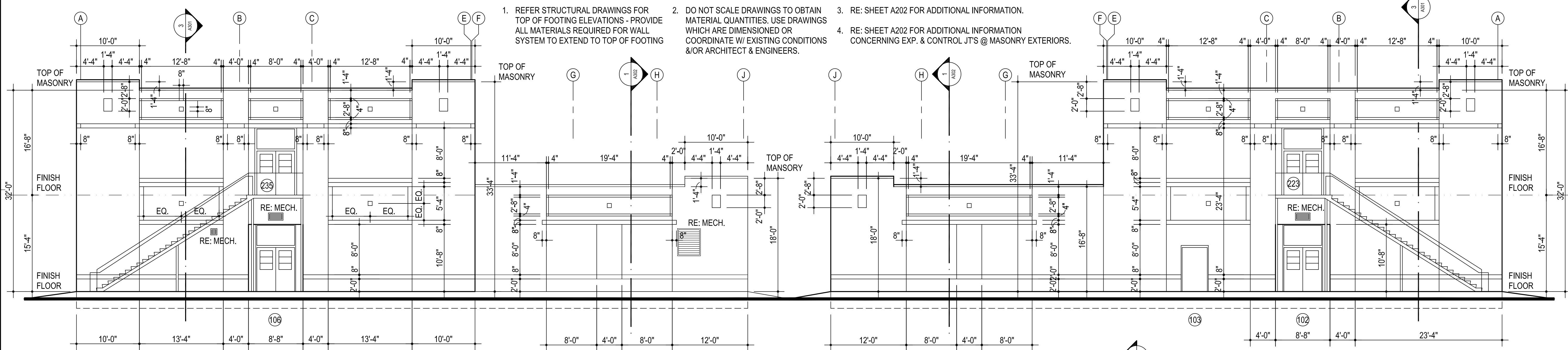
OWNERSHIP USE OF DOCUMENTS:  
AGP EXPRESSLY RESERVES ITS  
COPYRIGHT AND OTHER PROPERTY  
RIGHTS OF ALL PLANS AND DRAWINGS  
DESIGNED AND/OR PRODUCED. PLANS  
AND DRAWINGS ARE NOT TO BE  
REPRODUCED IN ANY FORM OR MANNER  
WITHOUT THE EXPRESSED WRITTEN  
CONSENT OF AGP.



**1 EAST ELEVATION**  
1/4" = 1'-0"

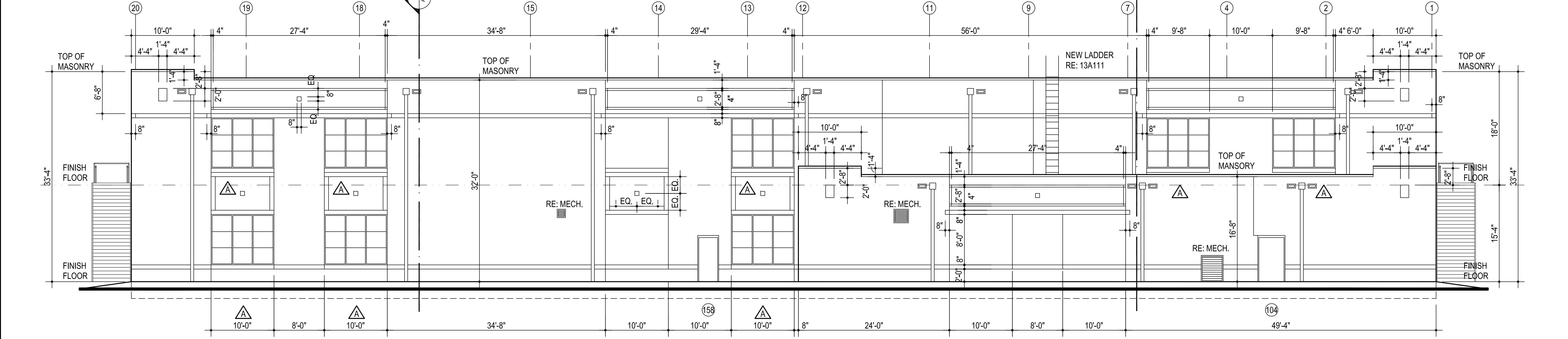
**GENERAL NOTES:**

1. REFER STRUCTURAL DRAWINGS FOR TOP OF FOOTING ELEVATIONS - PROVIDE ALL MATERIALS REQUIRED FOR WALL SYSTEM TO EXTEND TO TOP OF FOOTING
2. DO NOT SCALE DRAWINGS TO OBTAIN MATERIAL QUANTITIES. USE DRAWINGS WHICH ARE DIMENSIONED OR COORDINATE W/ EXISTING CONDITIONS &/OR ARCHITECT & ENGINEERS.
3. RE: SHEET A202 FOR ADDITIONAL INFORMATION.
4. RE: SHEET A202 FOR ADDITIONAL INFORMATION CONCERNING EXP. & CONTROL JTS @ MASONRY EXTERIORS.



**2 NORTH ELEVATION**  
1/4" = 1'-0"

**3 SOUTH ELEVATION**  
1/4" = 1'-0"



**4 WEST ELEVATION**  
1/4" = 1'-0"