



CG
drawn by
MA
checked by
NOVEMBER 2025
date
revisions



OLD SCHOOL
REPLACEMENT

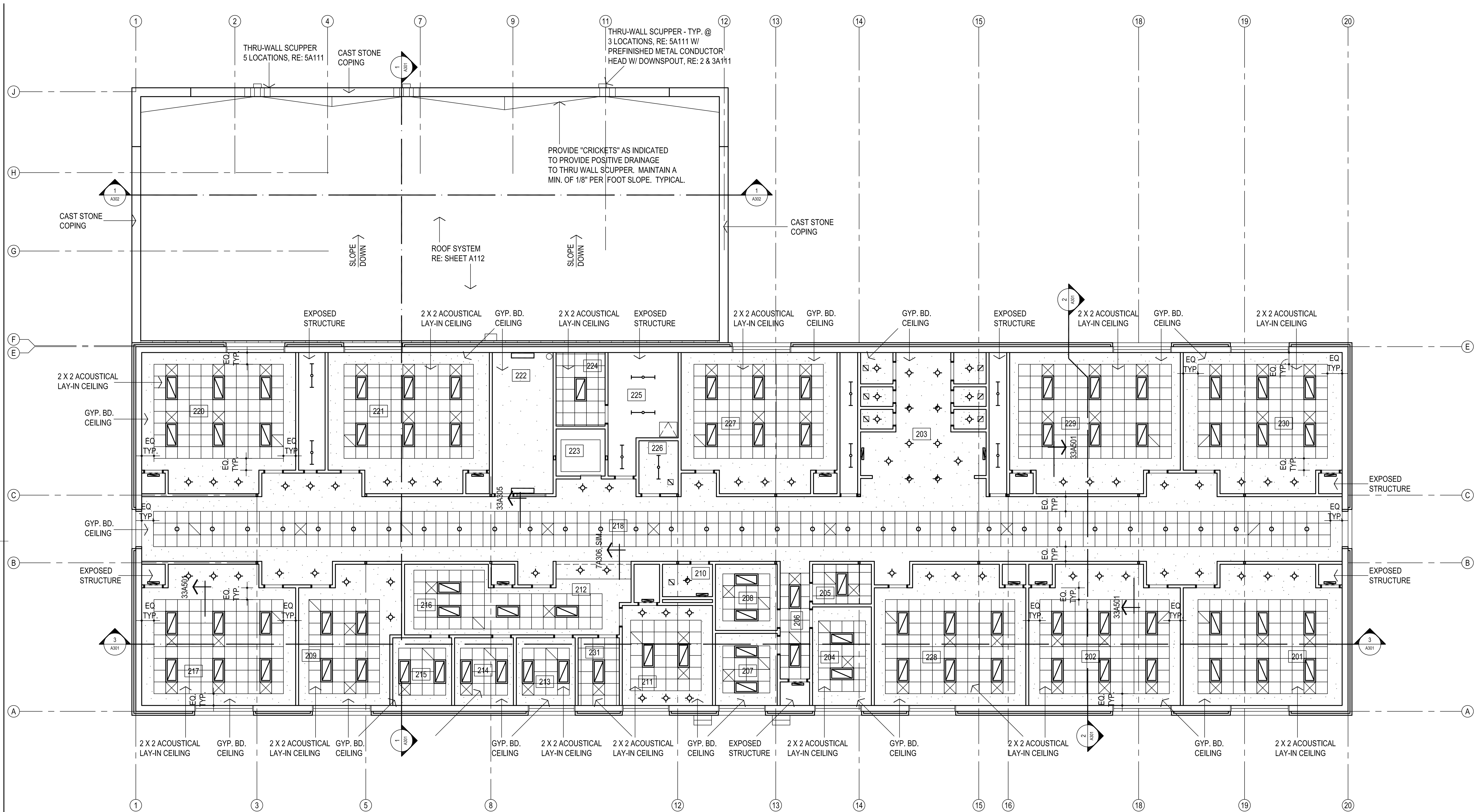
sheet no:

A105

REFLECTED CEILING PLAN

OWNERSHIP USE OF DOCUMENTS:

AGP EXPRESSLY RESERVES ITS
COPYRIGHT AND OTHER PROPERTY
RIGHTS OF ALL PLANS AND DRAWINGS
DESIGNED AND/OR PRODUCED. PLANS
AND DRAWINGS ARE NOT TO BE
REPRODUCED IN ANY FORM OR MANNER
WITHOUT THE EXPRESSED WRITTEN
CONSENT OF AGP.



1 REFLECTED CEILING PLAN - SECOND FLOOR
1/8" = 1'-0"

LEGEND:

	MECHANICAL OPENINGS
	ELECTRICAL FIXTURES
	CEILING MOUNTED SMOKE DETECTOR, RE: ELEC
	INDICATES AREA / ROOM TO RECEIVE GYP. BD.. CEILING
	INDICATES AREA / ROOM TO RECEIVE 2X2 LAY-IN CEILING

- NOTES:**
- REFER MECHANICAL & ELECTRICAL FOR ANY ADDITIONAL CEILING MOUNTED FIXTURES
 - REFER TO SHEET A109 & A110 FOR LOCATIONS OF FIRE-RATED WALLS
 - DO NOT SCALE DRAWINGS TO OBTAIN MATERIAL QUANTITIES. USE DRAWINGS WHICH ARE DIMENSIONED OR COORDINATE W/ EXISTING CONDITIONS &/OR ARCHITECT & ENGINEERS.

- NOTES:**
- ALL CEILINGS TO BE LOCATED AT 10'-0" A.F.F. UNLESS NOTED OTHERWISE.
 - THESE DRAWINGS INDICATE THE LIMITS OF FINISHES FOR AREAS THAT HAVE MULTIPLE TYPES AND COLORS. REFER ROOM FINISH SCHEDULE FOR CEILING MATERIAL AND COLOR DESIGNATIONS NOT SHOWN ON THIS SHEET.
 - ALL FURRDOWNS SHALL BE PAINTED UNLESS NOTED OTHERWISE.
 - ALL CEILING FURRDOWNS SHALL BE BRACED WITH LIGHT GAUGE FRAMING TO PREVENT SWAYING.
 - ALL CEILINGS, FURRDOWNS, PIPES, DUCTS, EQUIPMENT, ETC. SHALL BE SUSPENDED FROM STRUCTURAL STEEL ABOVE. DO NOT SUPPORT ITEMS FROM METAL DECK ONLY. REFER STRUCTURAL FOR REQUIREMENTS OF ATTACHMENT TO STEEL.
 - MECHANICAL AND ELECTRICAL DISCIPLINES ARE SHOWN FOR INFORMATION PURPOSES ONLY. REFER TO CONSULTANT SHEETS FOR EXACT FIXTURE LOCATIONS.
 - COORDINATE LOCATION OF ANY CONTROL JOINTS NOT SHOWN WITH THE ARCHITECT PRIOR TO INSTALLATION.
 - PROVIDE DRYWALL CONTROL JOINTS AT WALLS, CEILINGS AND SOFFITS, FURRINGS, ETC., WHERE SHOWN ON DRAWINGS, AND THE FOLLOWING LOCATIONS (SHOWN OR NOT):
A. AT OTHER LOCATIONS WHERE STRUCTURAL SUPPORT FOR FRAMING CHANGES LEVEL OR MATERIAL, OR WHERE DIFFERENTIAL MOVEMENT IS LIKELY TO OCCUR.
B. AT LOCATIONS WHERE CEILING FRAMING MEMBERS CHANGE DIRECTION,

- AT 30' MAX SPACING IN ANY UNINTERRUPTED STRAIGHT PLANE OR CURVE FOR WALLS, CEILINGS AND SOFFITS (IN TWO DIRECTIONS),
- AT DOORS, WINDOWS AND OPENINGS LESS THAN OR EQUAL TO 4'-0" WIDE, FROM ONE EDGE OF FRAME, TO TOP OF WALL, AND TO FLOOR IF OPENING DOES NOT EXTEND TO FLOOR.
- AT DOORS, WINDOWS AND OPENINGS GREATER THAN 4'-0" WIDE, FROM BOTH EDGES OF FRAME, TO TOP OF WALL, AND TO FLOOR IF OPENING DOES NOT EXTEND TO FLOOR.
- AT BUILDING CONTROL JOINTS, SEISMIC JOINTS AND EXPANSION JOINTS,
- AT LOCATIONS OF EXTREME DIFFERENCE IN THE DIMENSIONS OF ADJACENT DRYWALL AREAS.
- REFER TO TECHNOLOGY SHEETS & SPECS FOR OTHER CEILING TILE REQUIREMENTS.