



CG

drawn by

MA

checked by

NOVEMBER 2025

date

revisions



OLD SCHOOL
REPLACEMENT

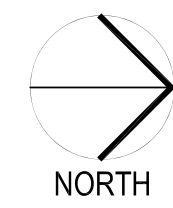
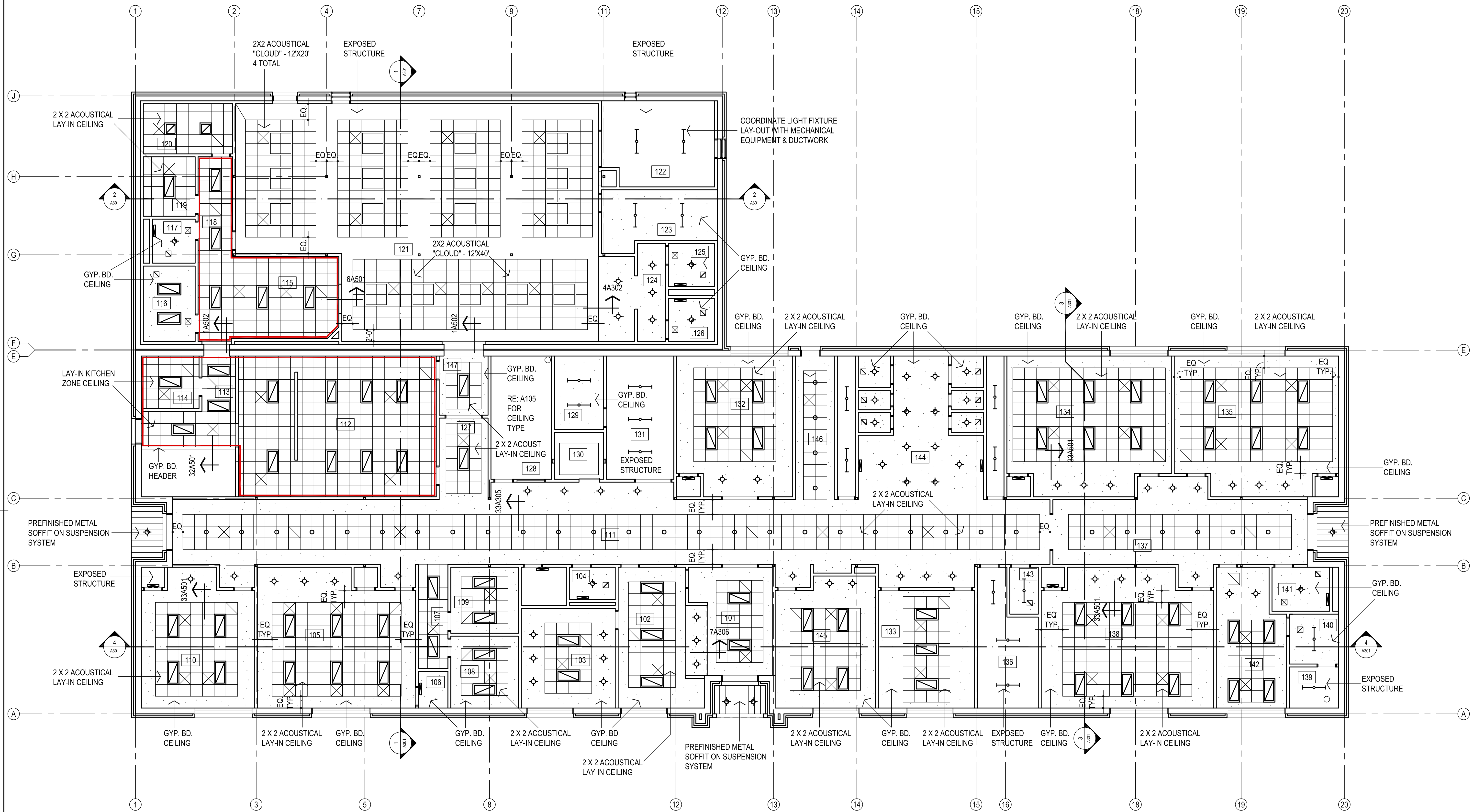
sheet no:

A104

REFLECTED CEILING PLAN

OWNERSHIP USE OF DOCUMENTS:

AGP EXPRESSLY RESERVES ITS
COPYRIGHT AND OTHER PROPERTY
RIGHTS OF ALL PLANS AND DRAWINGS
DESIGNED AND/OR PRODUCED. PLANS
AND DRAWINGS ARE NOT TO BE
REPRODUCED IN ANY FORM OR MANNER
WITHOUT THE EXPRESSED WRITTEN
CONSENT OF AGP.



1

REFLECTED CEILING PLAN - FIRST FLOOR
1/8" = 1'-0"

- NOTES:**
- REFER MECHANICAL & ELECTRICAL FOR ANY ADDITIONAL CEILING MOUNTED FIXTURES
 - REFER TO SHEET A109 & A110 FOR LOCATIONS OF FIRE-RATED WALLS
 - DO NOT SCALE DRAWINGS TO OBTAIN MATERIAL QUANTITIES. USE DRAWINGS WHICH ARE DIMENSIONED OR COORDINATE W/ EXISTING CONDITIONS &/OR ARCHITECT & ENGINEERS.

LEGEND:

	MECHANICAL OPENINGS		INDICATES AREA / ROOM TO RECEIVE GYP. BD., CEILING
	ELECTRICAL FIXTURES		INDICATES AREA / ROOM TO RECEIVE 2X2 LAY-IN CEILING
	CEILING MOUNTED SMOKE DETECTOR, RE: ELEC		INDICATES AREA / ROOM TO RECEIVE 2X2 LAY-IN KITCHEN ZONE CEILING

NOTES:

- ALL CEILINGS TO BE LOCATED AT 10'-0" A.F.F. UNLESS NOTED OTHERWISE.
- THESE DRAWINGS INDICATE THE LIMITS OF FINISHES FOR AREAS THAT HAVE MULTIPLE TYPES AND COLORS. REFER ROOM FINISH SCHEDULE FOR CEILING MATERIAL AND COLOR DESIGNATIONS NOT SHOWN ON THIS SHEET.
- ALL FURRDOWNS SHALL BE PAINTED UNLESS NOTED OTHERWISE.
- ALL CEILING FURRDOWNS SHALL BE BRACED WITH LIGHT GAUGE FRAMING TO PREVENT SWAYING.
- ALL CEILINGS, FURRDOWNS, PIPES, DUCTS, EQUIPMENT, ETC. SHALL BE SUSPENDED FROM STRUCTURAL STEEL ABOVE. DO NOT SUPPORT ITEMS FROM METAL DECK ONLY. REFER STRUCTURAL FOR REQUIREMENTS OF ATTACHMENT TO STEEL.
- MECHANICAL AND ELECTRICAL DISCIPLINES ARE SHOWN FOR INFORMATION PURPOSES ONLY. REFER TO CONSULTANT SHEETS FOR EXACT FIXTURE LOCATIONS.
- COORDINATE LOCATION OF ANY CONTROL JOINTS NOT SHOWN WITH THE ARCHITECT PRIOR TO INSTALLATION.
- PROVIDE DRYWALL CONTROL JOINTS AT WALLS, CEILINGS AND SOFFITS, FURRINGS, ETC., WHERE SHOWN ON DRAWINGS, AND THE FOLLOWING LOCATIONS (SHOWN OR NOT):
A. AT OTHER LOCATIONS WHERE STRUCTURAL SUPPORT FOR FRAMING CHANGES LEVEL OR MATERIAL, OR WHERE DIFFERENTIAL MOVEMENT IS LIKELY TO OCCUR.
B. AT LOCATIONS WHERE CEILING FRAMING MEMBERS CHANGE DIRECTION.
- AT 30' MAX SPACING IN ANY UNINTERRUPTED STRAIGHT PLANE OR CURVE FOR WALLS, CEILINGS AND SOFFITS (IN TWO DIRECTIONS).
- AT DOORS, WINDOWS AND OPENINGS LESS THAN OR EQUAL TO 4'-0" WIDE, FROM ONE EDGE OF FRAME, TO TOP OF WALL, AND TO FLOOR IF OPENING DOES NOT EXTEND TO FLOOR.
- AT DOORS, WINDOWS AND OPENINGS GREATER THAN 4'-0" WIDE, FROM BOTH EDGES OF FRAME, TO TOP OF WALL, AND TO FLOOR IF OPENING DOES NOT EXTEND TO FLOOR.
- AT BUILDING CONTROL JOINTS, SEISMIC JOINTS AND EXPANSION JOINTS.
- AT LOCATIONS OF EXTREME DIFFERENCE IN THE DIMENSIONS OF ADJACENT DRYWALL AREAS.
- REFER TO TECHNOLOGY SHEETS & SPECS FOR OTHER CEILING TILE REQUIREMENTS.