

CEDAR CREEK

CIVIL

KFC ENGINEERING
STRUCTURAL

SALAS O'BRIEN

MECHANICAL / ELECTRICAL



CG

drawn by

MA

checked by

NOVEMBER 2025

date

revisions



MOORE
PUBLIC SCHOOLS

OLD SCHOOL
REPLACEMENT

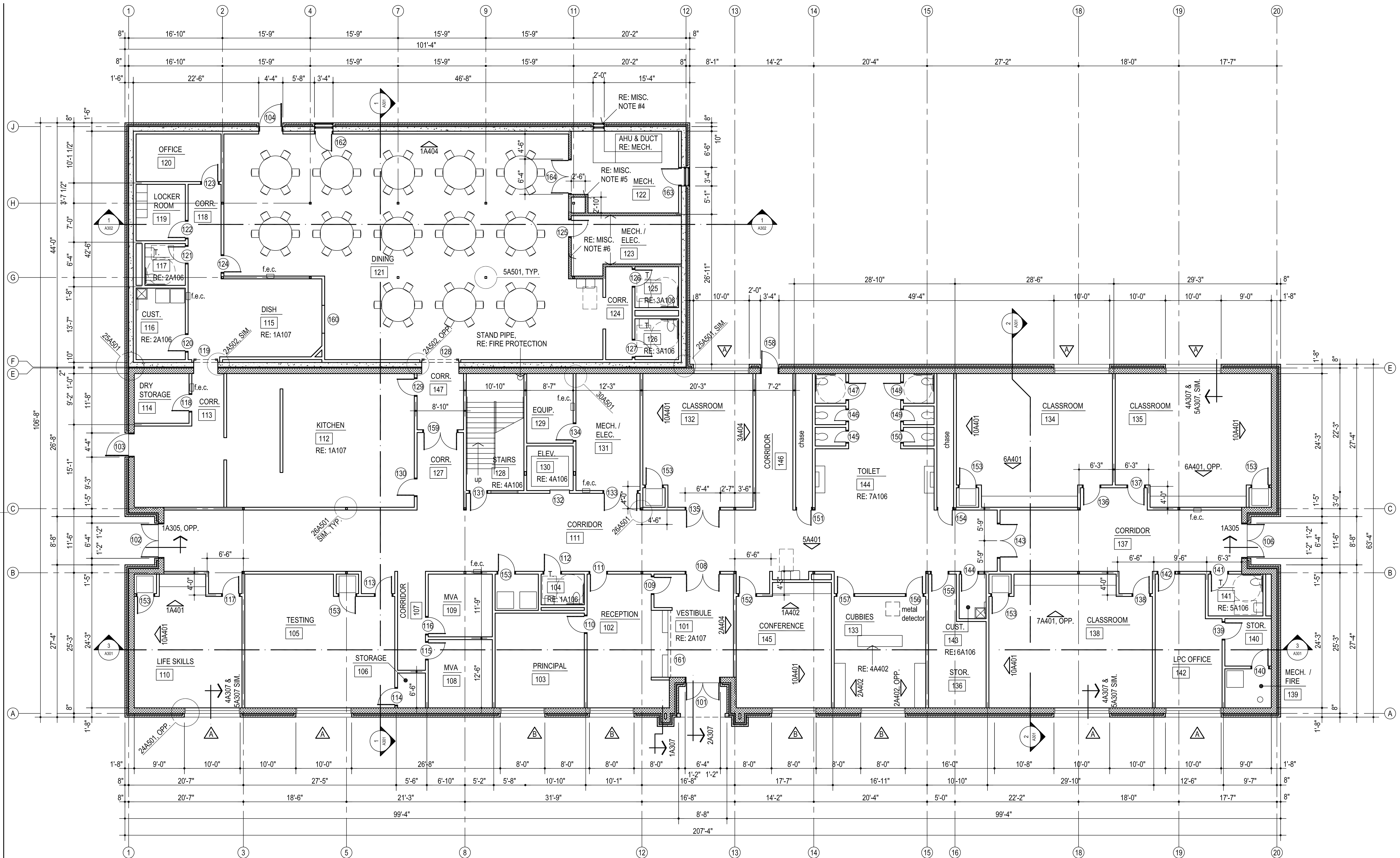
sheet no:

A102

FIRST FLOOR PLAN

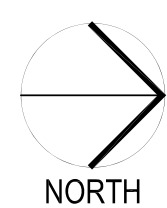
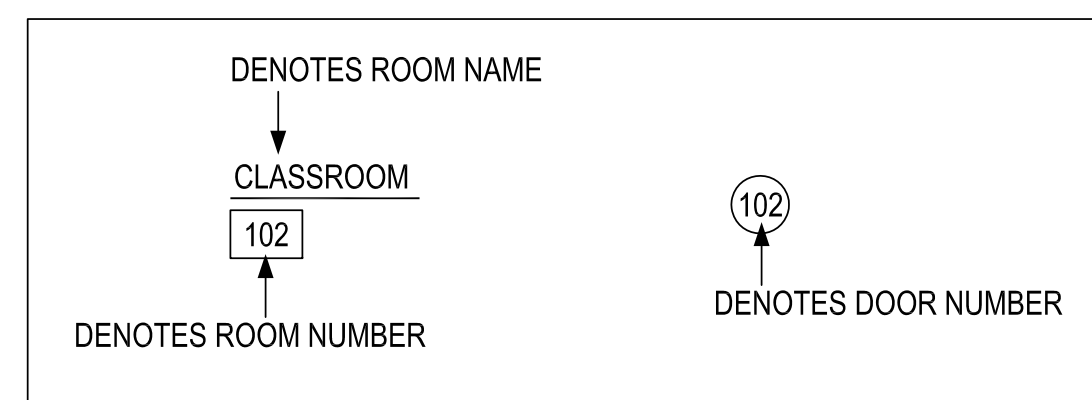
OWNERSHIP USE OF DOCUMENTS:

AGP EXPRESSLY RESERVES ITS
COPYRIGHT AND OTHER PROPERTY
RIGHTS OF ALL PLANS AND DRAWINGS
DESIGNED AND/OR PRODUCED. PLANS
AND DRAWINGS ARE NOT TO BE
REPRODUCED IN ANY FORM OR MANNER
WITHOUT THE EXPRESSED WRITTEN
CONSENT OF AGP.



MISCELLANEOUS NOTES:

- F.E.C. - FIRE EXTINGUISHER AND CABINET
- DO NOT SCALE DRAWINGS TO OBTAIN MATERIAL QUANTITIES. USE DRAWINGS WHICH ARE DIMENSIONED OR COORDINATE W/ EXISTING CONDITIONS &/OR ARCHITECT & ENGINEERS.
- INTERIOR PARTITIONS ARE DIMENSIONED TO CENTER LINE
- COORDINATE LOUVER LOCATION WITH MECHANICAL EQUIPMENT LAYOUT PRIOR TO CONSTRUCTION.
- VERTICAL CHASE WALL TO BE 6" MTL. STUDS W/ 6" BATT INSUL. 5/8" GYP. BD. EACH SIDE - WRAP TOP TRACK WITH 5/8" GYP. BD. - TOP OF WALL TO BE 8'-0" ABOVE FIN. FLR.
- WALLS AT ROOM 122 & 123 TO RECEIVE 6" BATT INSULATION TO DECK ABOVE.



1

FIRST FLOOR PLAN

1/8" = 1'-0"