



CG	drawn by
MA	checked by
NOVEMBER 2025	date
	revisions



**CONSTRUCTION DATA (TABLE 503):**

OCCUPANCY -	E
CONSTRUCTION TYPE -	TYPE II - B
BASIC ALLOWABLE AREA -	58,000 S.F. PER FLOOR
ALLOWABLE STORIES -	3
ACTUAL STORIES -	2
ACTUAL HEIGHT -	32'-0"

<b>BUILDING SIZES:</b>	
FIRST FLOOR:	17,430 S.F.
SECOND FLOOR:	12,972 S.F.
TOTAL:	30,402 S.F.

**STRUCTURAL FIRE PROTECTION (TABLE 601):**

EXTERIOR BEARING WALLS	0 HOUR
INTERIOR BEARING WALLS	NONCOMBUSTIBLE
EXTERIOR NONBEARING WALLS	NONCOMBUSTIBLE
COLUMNS	0 HOUR
BEAMS	0 HOUR
PERMANENT PARTITIONS	NONCOMBUSTIBLE
FLOOR ASSEMBLIES	0 HOUR
ROOF ASSEMBLIES	0 HOUR
EXTERIOR OPENINGS	N/A

**PASSIVE FIRE SAFETY SYSTEM:**

PORTABLE FIRE EXTINGUISHERS (RE: SHEETS A109 & A110)  
TRAVEL DISTANCE = 250'-0" MAX.  
ACTUAL MAX. TRAVEL DISTANCE = 118'-0"  
DEADEND - 50'-0" MAX.  
ACTUAL DEADEND - NONE

**ACTIVE FIRE SAFETY SYSTEMS:**

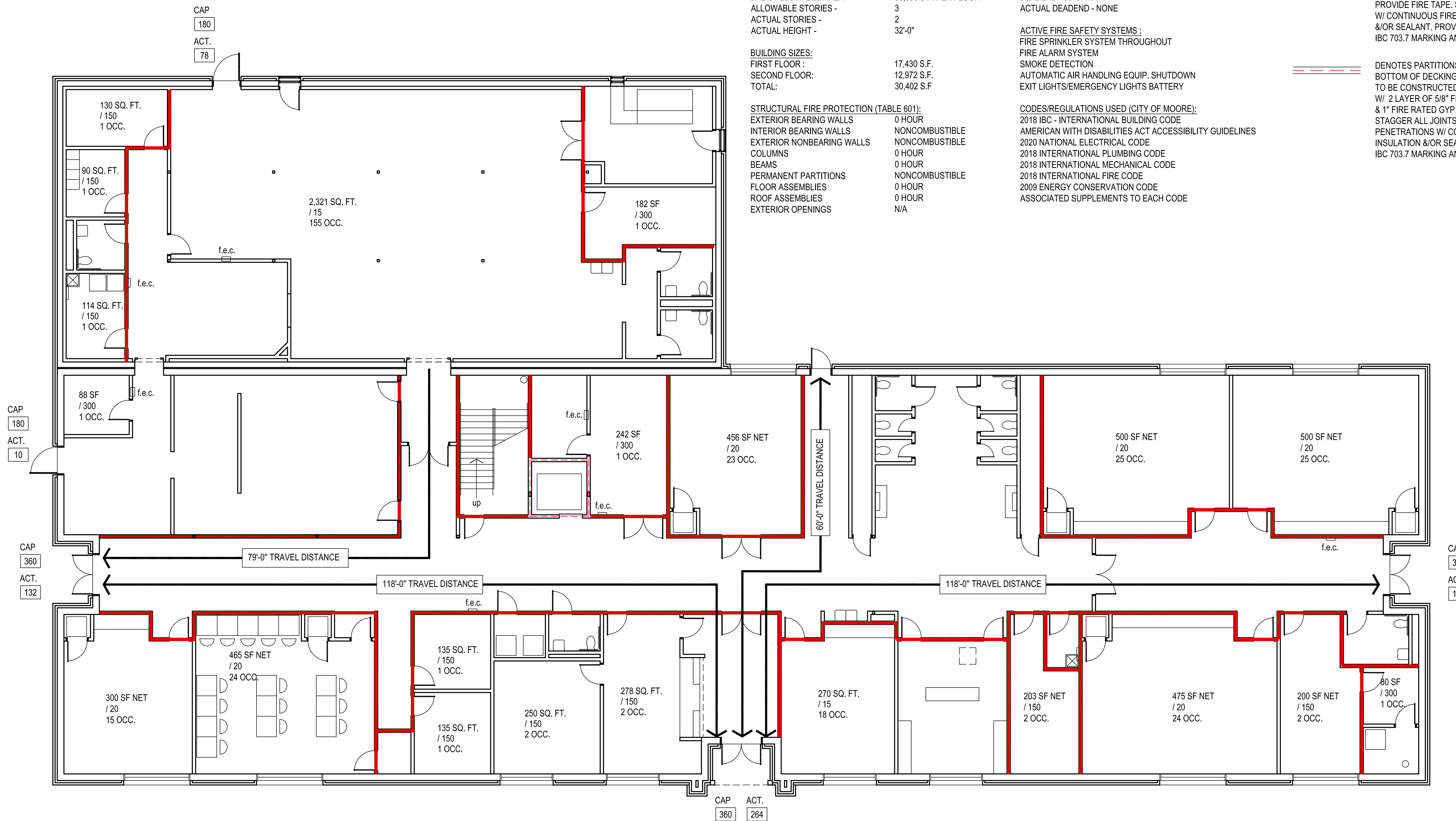
FIRE SPRINKLER SYSTEM THROUGHOUT  
FIRE ALARM SYSTEM  
SMOKE DETECTION  
AUTOMATIC AIR HANDLING EQUIP. SHUTDOWN  
EXIT LIGHTS/EMERGENCY LIGHTS BATTERY

**CODES/REGULATIONS USED (CITY OF MOORE):**

2018 IBC - INTERNATIONAL BUILDING CODE  
AMERICAN WITH DISABILITIES ACT ACCESSIBILITY GUIDELINES  
2020 NATIONAL ELECTRICAL CODE  
2018 INTERNATIONAL PLUMBING CODE  
2018 INTERNATIONAL MECHANICAL CODE  
2018 INTERNATIONAL FIRE CODE  
2009 ENERGY CONSERVATION CODE  
ASSOCIATED SUPPLEMENTS TO EACH CODE

**—** DENOTES PARTITIONS TO CLOSE-OUT TO  
BOTTOM OF DECKING - CLOSE-OUT PARTITIONS  
TO BE CONSTRUCTED OF 1 LAYER OF 5/8"  
FIRE RATED GYP. BOARD EACH SIDE ON 6" METAL  
STUDS @ 16" O.C. STAGGER ALL JOINTS &  
PROVIDE FIRE TAPE. SEAL ALL PENETRATIONS  
W/ CONTINUOUS FIRE STOPPING INSULATION  
&/OR SEALANT. PROVIDE LABELING AS PER  
IBC 703.7 MARKING AND IDENTIFICATION

**---** DENOTES PARTITIONS TO CLOSE-OUT TO  
BOTTOM OF DECKING - CLOSE-OUT PARTITIONS  
TO BE CONSTRUCTED OF 4" METAL STUDS @ 16" O.C.  
W/ 2 LAYER OF 5/8" FIRE RATED GYP. BOARD ONE SIDE  
& 1" FIRE RATED GYP. BD. ON ELEVATOR SHAFT SIDE  
STAGGER ALL JOINTS & PROVIDE FIRE TAPE. SEAL ALL  
PENETRATIONS W/ CONTINUOUS FIRE STOPPING  
INSULATION &/OR SEALANT. PROVIDE LABELING AS PER  
IBC 703.7 MARKING AND IDENTIFICATION



**OCCUPANT LOAD (TABLE 1004.5):**

BUILDING : TOTAL OCCUPANTS FIRST FLOOR = 326  
TOTAL OCCUPANTS SECOND FLOOR = 260  
TOTAL OCCUPANTS = 586

**PLUMBING FIXTURES (TABLE 2902.1):**

TOTAL OCCUPANT LOAD ( EDUCATIONAL ) = 586

TOTAL REQUIRED:	TOTAL PROVIDED:
WATER CLOSETS = 12	WATER CLOSETS = 18
LAVATORIES = 12	LAVATORIES = 14
DRINKING FOUNTAINS = 6	DRINKING FOUNTAINS = 6
SERVICE SINKS = 1	SERVICE SINKS = 3

**CORRIDOR WIDTH REQUIREMENTS:**

**\*\* OCC** DENOTES NUMBER OF OCCUPANTS PER ROOM / EXIT  
ALL CORRIDORS (8'-0" WIDTH) : 96 MAX. OCCUPANTS X 0.20 =  
19.2" REQ'D / 96" MINIMUM PROVIDED

ALL CORRIDORS & EXIT DOORS EXCEED MINIMUM  
CLEARANCES AS REQUIRED BY IBC & ADA

**EGRESS WIDTH:**

OCCUPANT LOAD THIS FLOOR = 326  
OCCUPANT LOAD FROM SECOND FLOOR ABOVE = 260  
TOTAL OCCUPANT LOAD = 586  
EGRESS WIDTH REQUIRED = 117.2"  
TOTAL EGRESS WIDTH PROVIDED = 348"

**NOTE:**  
THIS PLAN INDICATES WALL TO CLOSE OUT TO STRUCTURE  
DUE TO FIRE CODE REQUIREMENTS.  
IT IS NOT A REPRESENTATION OF ALL WALLS REQ'D TO CLOSE  
OUT FOR STRUCTURAL / NO CEILING PRESENT / ETC. LOCATIONS

