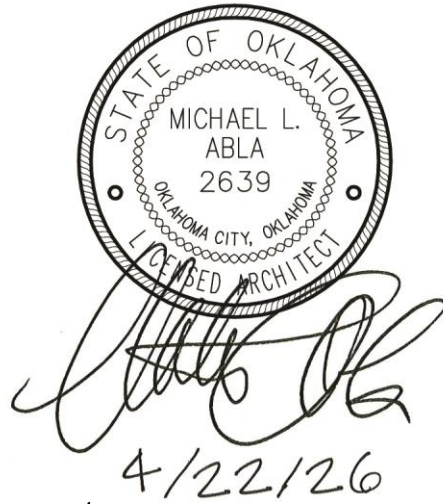


**MOORE PUBLIC SCHOOLS -  
OLD SCHOOL REPLACEMENT**  
Moore Public Schools - Moore, Oklahoma  
AGP - Moore, Oklahoma

-----  
**ADDENDUM NO. 4**

April 22, 2026  
-----



This addendum applicable to work designated herein, shall be understood to be an Addendum, and as such shall be included in the Contract Agreement.

Receipt of this Addendum shall be acknowledged by the Construction Management Firm notifying this office in writing, and by any applicable subcontractor to the CM.

This addendum consists of two (2) pages with attachments of five (5) 8.5"x11" pages and nine (9) 24"x36" sheets.

---

A. Drawings:

General / Structural

No changes.

Civil

1. Sheet C1.00, Demolition Plan: carefully remove and store existing Historic Route 77 Sign at northeast end of property. Reinstall after completion of new building construction, etc. as directed by Architect.

Architectural

1. Sheet AD101, Detail #1, Existing Demolition First Floor: carefully remove, store, and reinstall existing USGS Monument next to existing main entrance exterior alcove. Removal, resetting, etc. to meet all applicable standards required by Benchmark Reset Procedures – coordinate with Architect and authority having jurisdiction.
2. Sheet A102, Detail #1, First Floor Plan: revised interior elevation references in Room #132 as per revised drawing. Refer to attachment.

3. Sheet A404, Details #1, 2, & 3, Interior Elevations: revised notes concerning walls to receive salvaged materials. Refer to attached revised drawing.

Kitchen Equipment

No changes.

Mechanical, Electrical, and Plumbing

Refer to attachments.

B. Specifications:

Architectural

1. Section 10420 – Letters and Plaques: revise specification as noted. Refer to attachment.

Civil

No changes.

Mechanical, Electrical, and Plumbing

No changes.

END OF ADDENDUM NO. 4

CEDAR CREEK

CIVIL

KFC ENGINEERING  
STRUCTURAL

SALAS O'BRIEN

MECHANICAL / ELECTRICAL



CG

drawn by

MA

checked by

NOVEMBER 2025

date

revisions

1 ADDENDUM #1

2 ADDENDUM #2

3 ADDENDUM #4



**MOORE**  
PUBLIC SCHOOLS

OLD SCHOOL  
REPLACEMENT

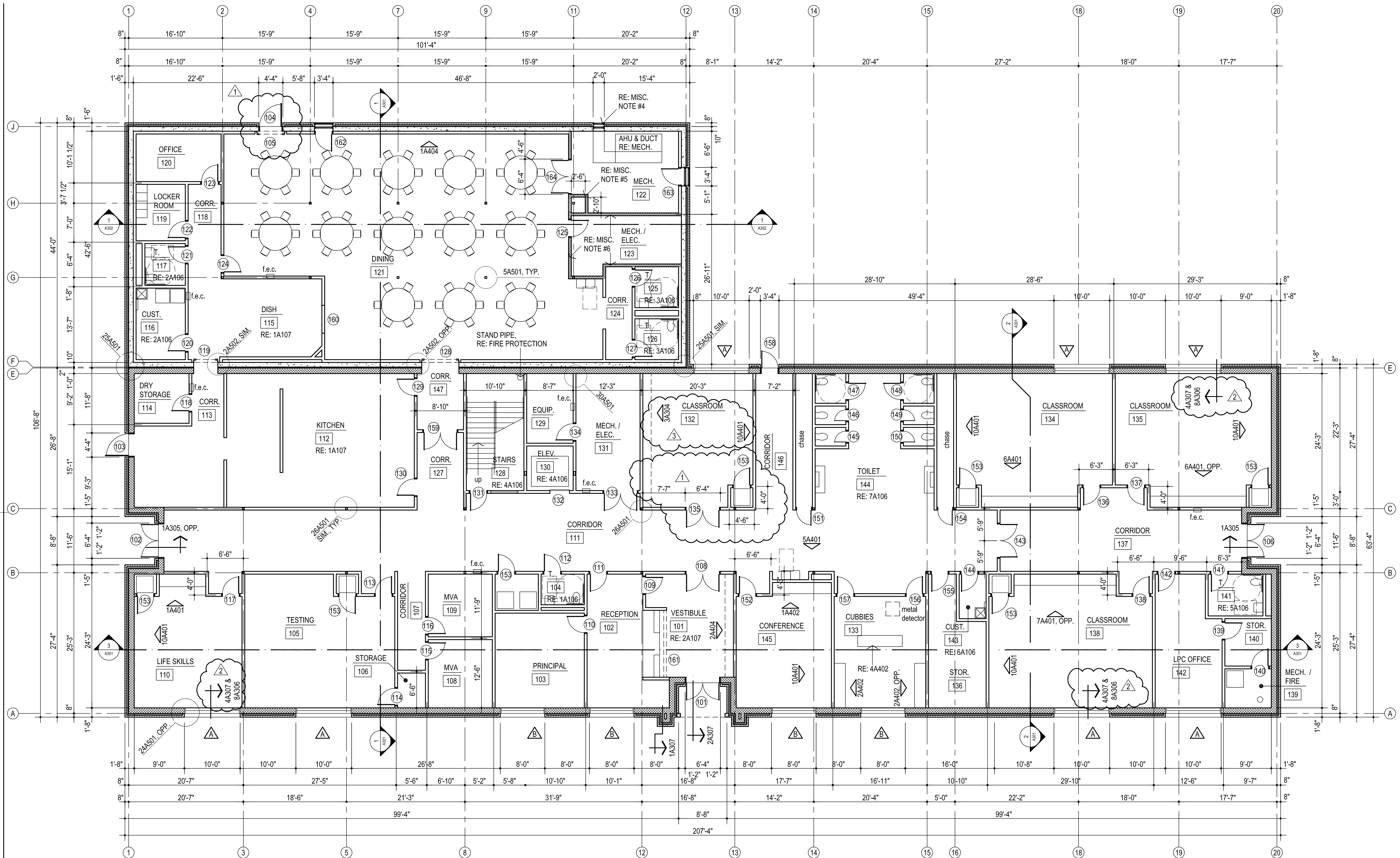
sheet no:

**A102**

FIRST FLOOR PLAN

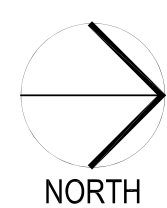
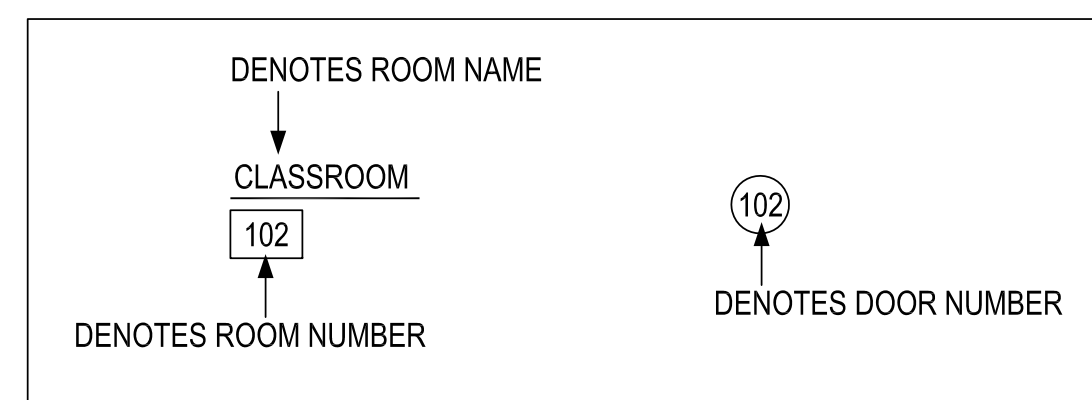
OWNERSHIP USE OF DOCUMENTS:

AGP EXPRESSLY RESERVES ITS COPYRIGHT AND OTHER PROPERTY RIGHTS OF ALL PLANS AND DRAWINGS DESIGNED AND/OR PRODUCED. PLANS AND DRAWINGS ARE NOT TO BE REPRODUCED IN ANY FORM OR MANNER WITHOUT THE EXPRESSED WRITTEN CONSENT OF AGP.



**MISCELLANEOUS NOTES:**

- F.E.C. - FIRE EXTINGUISHER AND CABINET
- DO NOT SCALE DRAWINGS TO OBTAIN MATERIAL QUANTITIES. USE DRAWINGS WHICH ARE DIMENSIONED OR COORDINATE W/ EXISTING CONDITIONS &/OR ARCHITECT & ENGINEERS.
- INTERIOR PARTITIONS ARE DIMENSIONED TO CENTER LINE
- COORDINATE LOUVER LOCATION WITH MECHANICAL EQUIPMENT LAYOUT PRIOR TO CONSTRUCTION.
- VERTICAL CHASE WALL TO BE 6" MTL. STUDS W/ 6" BATT INSUL. 5/8" GYP. BD. EACH SIDE - WRAP TOP TRACK WITH 5/8" GYP. BD. - TOP OF WALL TO BE 8'-0" ABOVE FIN. FLR.
- WALLS AT ROOM 122 & 123 TO RECEIVE 6" BATT INSULATION TO DECK ABOVE.



**1**

**FIRST FLOOR PLAN**

1/8" = 1'-0"



CG

drawn by

MA

checked by

NOVEMBER 2025

date

revisions

1 ADDENDUM #2

2 ADDENDUM #4



OLD SCHOOL  
REPLACEMENT

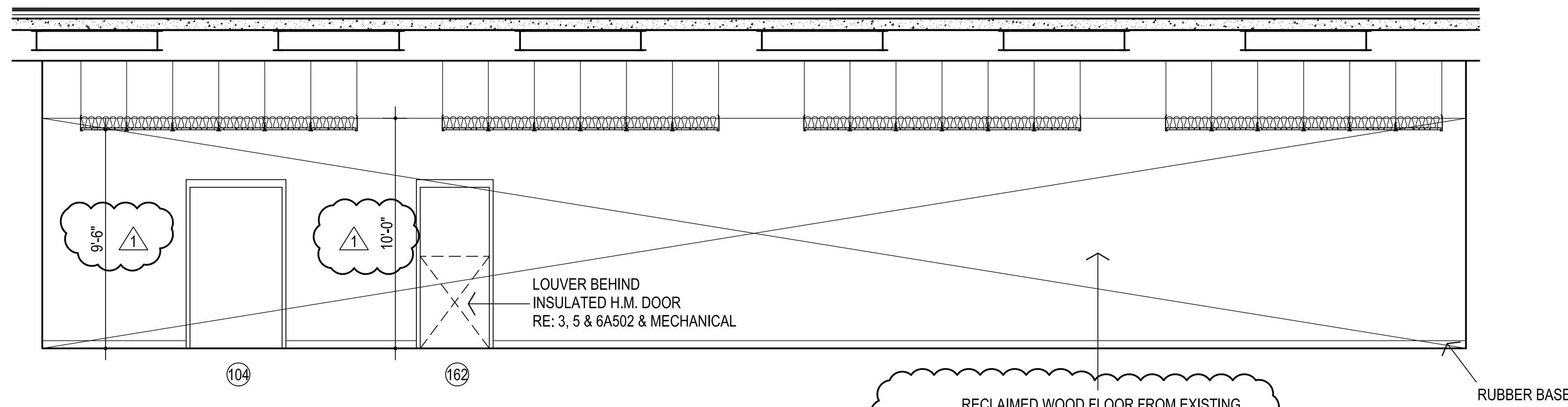
sheet no:

**A404**

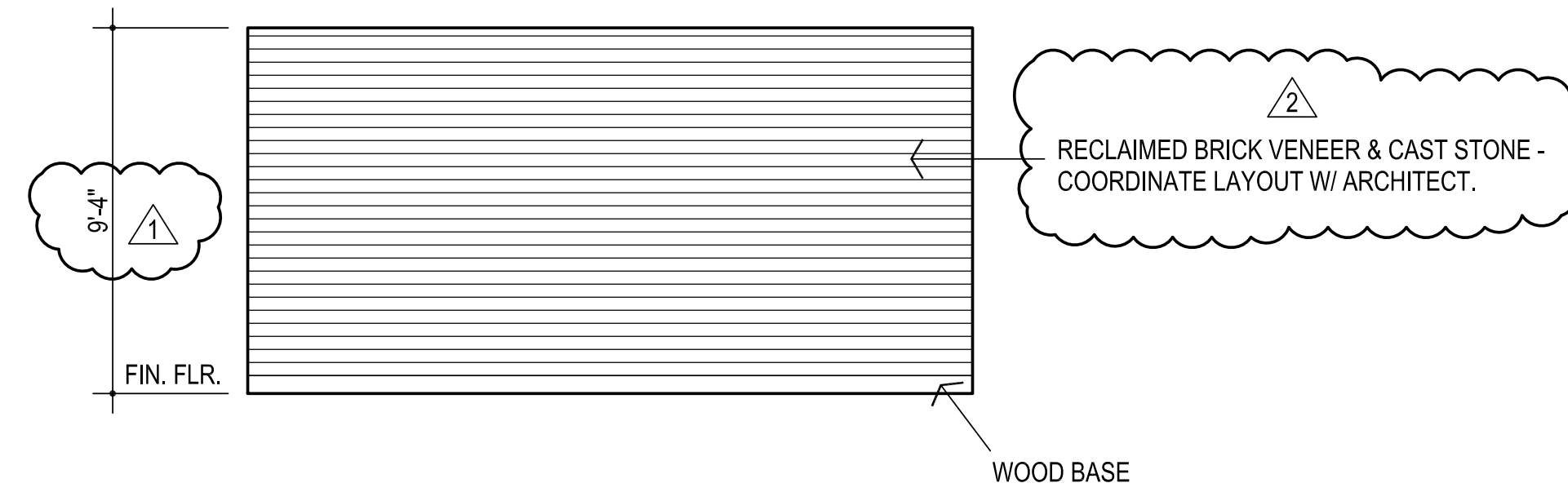
INTERIOR ELEVATIONS

OWNERSHIP USE OF DOCUMENTS:

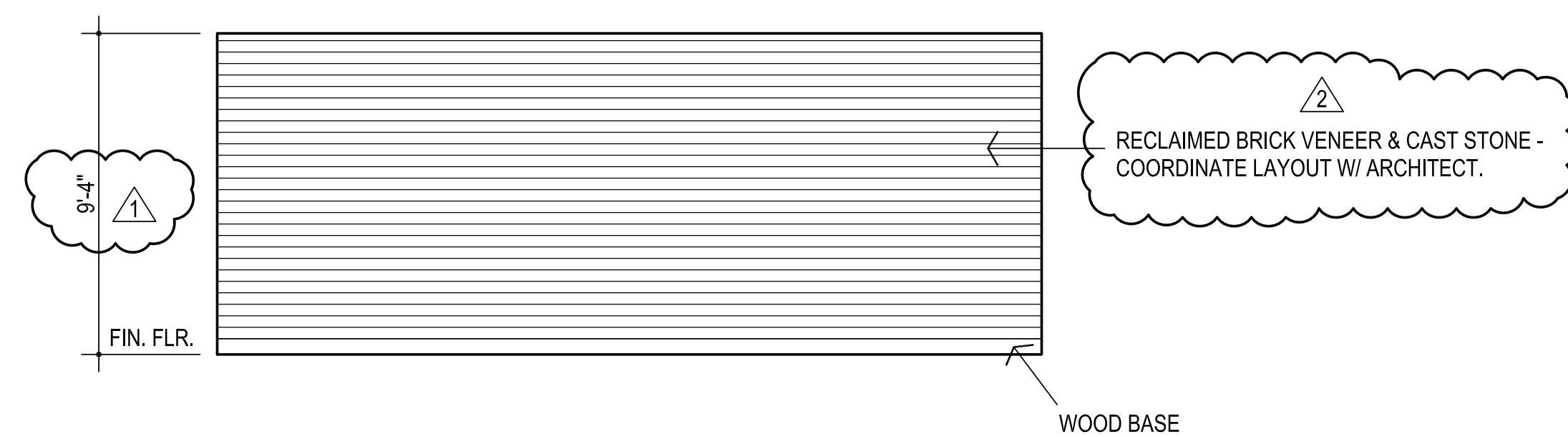
AGP EXPRESSLY RESERVES ITS  
COPYRIGHT AND OTHER PROPERTY  
RIGHTS OF ALL PLANS AND DRAWINGS  
DESIGNED AND/OR PRODUCED. PLANS  
AND DRAWINGS ARE NOT TO BE  
REPRODUCED IN ANY FORM OR MANNER  
WITHOUT THE EXPRESSED WRITTEN  
CONSENT OF AGP.



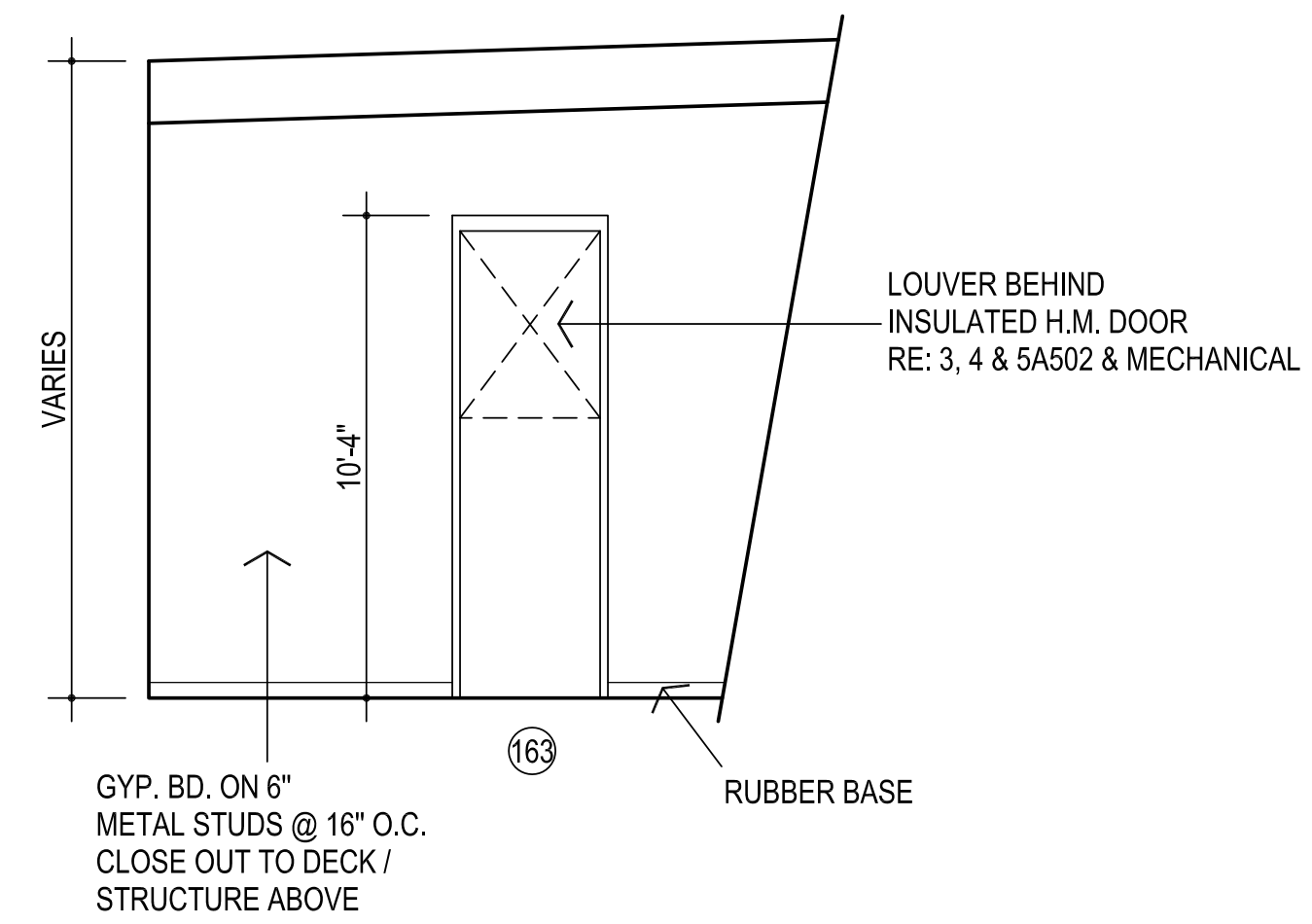
**1** W. WALL ROOM # 121  
1/4" = 1'-0"



**2** N. WALL ROOM # 101  
1/4" = 1'-0"



**3** S. WALL ROOM # 132  
1/4" = 1'-0"



## ADDENDUM 04

Issue Date: April 22, 2026

### Project Information

Client: Abla Griffin Partnership  
Project Name: Old School Replacement  
Project Location: Moore, OK  
Owner: Moore Public Schools  
Engineer: Salas O'Brien, Inc

Project No. 2550-01554-00



### To Prospective Bidders

- ▶ This Addendum forms a part of the Contract Documents and modifies the Bidding Documents dated February 6, 2026, (and previous Addenda), with amendments and additions noted below.
- ▶ This Addendum consists of (2) pages and (8) attachments.
  - Index of Attachments
    - T000                    E202
    - T201                    E601
    - T202                    E602
    - E201                    Pole Base Detail
- ▶ Acknowledge receipt of this Addendum in the space provided on the Bid Form. Failure to do so may disqualify Bidder.

### CHANGES TO THE DRAWINGS

*Revisions have been made to the following drawings and are issued in the form of full-size plans. Edits are indicated by a revision delta and a cloud surrounding the affected portion of the drawing.*

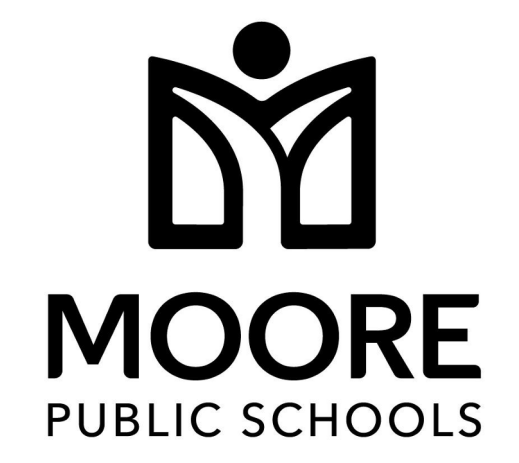
- ▶ T000 TECHNOLOGY NOTES AND LEGENDS
  - Refer to clouds and deltas for changes on plans.



- ▶ T201 TECHNOLOGY PLAN – FIRST FLOOR
  - Refer to clouds and deltas for changes on plans.
- ▶ T202 TECHNOLOGY PLAN – SECOND FLOOR
  - Refer to clouds and deltas for changes on plans.
- ▶ E201 ELECTRICAL POWER PLAN – FIRST FLOOR
  - Refer to clouds and deltas for changes on plans.
- ▶ E202 ELECTRICAL POWER PLAN – SECOND FLOOR
  - Refer to clouds and deltas for changes on plans.
- ▶ E601 ELECTRICAL SCHEDULES
  - Refer to clouds and deltas for changes on plans.
- ▶ E602 ELECTRICAL SCHEDULES
  - Refer to clouds and deltas for changes on plans.

**END OF ADDENDUM 04**

Δ	DESCRIPTION	DATE
1	ADD 04	04/22/2026



STRUCTURED CABLING LEGEND				
SYMBOL	DESCRIPTION	ELEVATION	BACK BOX/RACEWAY	NOTES
W	WALL MOUNTED NETWORK OUTLET D#: NUMBER OF DATA DROPS IN OUTLET AP: WIRELESS ACCESS POINT	+18" AFF, UNLESS OTHERWISE NOTED	4"X4"X2 1/8" BACK BOX WITH 1-G MUD RING, 1" C	
V	COMMUNICATIONS OUTLET	FIELD COORDINATE	FIELD COORDINATE	
W	WALL MOUNTED NETWORK OUTLET	+44" AFF	4"X4"X2 1/8" BACK BOX WITH 1-G MUD RING, 1" C	
B	WALL MOUNTED BOX FOR FUTURE USE.	+18" AFF UNO	4"X4"X2 1/8" BACK BOX WITH 1-G MUD RING, 1" C	
D#	FLOOR MOUNTED NETWORK OUTLET	N/A	COORDINATE WITH ELECTRICAL CONTRACTOR	FINISHED HARDWARE PROVIDED BY DIV 27
D#	CEILING MOUNTED NETWORK OUTLET D#: NETWORK OUTLET	ABOVE CEILING	CEILING BRACKET WITH BISCUIT BLOCK	
D#	CEILING MOUNTED NETWORK OUTLET FOR ACCESS POINT D#: NETWORK DROP QUANTITY	ABOVE CEILING	CEILING BRACKET WITH BISCUIT BLOCK	

NOTES:  
1. #G INDICATES BACK BOX SIZE.  
2. #C INDICATES CONDUIT SIZE.  
3. UNO: UNLESS NOTED OTHERWISE.  
4. CONDUIT STUB UP AND SLEEVES SHALL HAVE A SOLID UNCUV PLASTIC PROTECTIVE BUSHING.  
5. NO CONDUITS SHALL EXCEED FOR 40% MAXIMUM FILL RATIO. CONTRACTOR TO PROVIDE ADDITIONAL CONDUITS REQUIRED.

AUDIO/VIDEO LEGEND				
SYMBOL	DESCRIPTION	ELEVATION	BACK BOX/RACEWAY	NOTES
WMP	WALL MOUNTED PROJECTOR AUDIOVISUAL OUTPUT OUTLET	REFERENCE FLOOR PLANS	4 11/16"X4 11/16"X2-1/8" BACK BOX WITH DOUBLE GANG RING, TWO(2) 1.25" C	NOTE #5
CMPT	CEILING MOUNTED PROJECTOR AUDIOVISUAL OUTPUT OUTLET	CEILING MOUNTED	N/A	NOTE #5
AV-1	WALL MOUNTED AUDIO/VIDEO INPUT OUTLET	+18" AFF UNO	4 11/16"X4 11/16"X2-1/8" BACK BOX WITH DOUBLE GANG RING, TWO(2) 1.25" C	
FSD-1	WALL MOUNTED FLAT SCREEN DISPLAY AUDIOVISUAL OUTPUT OUTLET	REFERENCE FLOOR PLAN	4"X4"X2 1/8" BACK BOX WITH 1-G MUD RING, 1" C	NOTE #5
FSD-2	WALL MOUNTED FLAT SCREEN DISPLAY AUDIOVISUAL OUTPUT OUTLET ASSOCIATED WITH AV-1 INPUT OUTLET	REFERENCE FLOOR PLAN	4 11/16"X4 11/16"X2-1/8" BACK BOX WITH DOUBLE GANG RING, TWO(2) 1.25" C	NOTE #5
IVD	INTERACTIVE VIDEO DISPLAY AUDIOVISUAL OUTPUT OUTLET	REFERENCE FLOOR PLAN	4 11/16"X4 11/16"X2-1/8" BACK BOX WITH DOUBLE GANG RING, TWO(2) 1.25" C	
CP	AV CONTROL PANEL	+48" AFF TO TOP	4"X4"X2 1/8" BACK BOX WITH 1-G MUD RING, 1" C	
FS	LOCAL INSTRUCTION SPACE PRESENTATION SPEAKER	CEILING	CONTRACTOR PROVIDED CEILING BOX	COORDINATE POWER WITH EC
SC	STREAMING CAMERA	CEILING UNO	N/A	NOTE #5

NOTES:  
1. #G INDICATES BACK BOX SIZE.  
2. #C INDICATES CONDUIT SIZE.  
3. UNO: UNLESS NOTED OTHERWISE.  
4. THE SYSTEM INTEGRATOR SHALL COORDINATE ALL BOX AND CONDUIT SIZE REQUIREMENTS PRIOR TO ROUGH-IN BY THE PROJECTS ELECTRICAL CONTRACTOR.  
5. PROVIDE AND INSTALL ONE (1) CATEGORY CABLE TO CONNECT DEVICE TO NETWORK

INTERCOM LEGEND				
SYMBOL	DESCRIPTION	ELEVATION	BACK BOX/RACEWAY	NOTES
ICS	INTERCOM COMMUNICATIONS SYSTEM HEAD END UNIT.	FLOOR MOUNTED	COORDINATE WITH EC	COORDINATE POWER WITH EC.
S	CEILING MOUNT INTERCOM SPEAKER, LAY-IN CEILING	CEILING	CONTRACTOR PROVIDED	
S2	CEILING MOUNT INTERCOM SPEAKER, HARD CEILING.	CEILING	CONTRACTOR PROVIDED	
S3	WALL MOUNT INTERIOR INTERCOM SPEAKER	REFERENCE FLOOR PLANS	CONTRACTOR PROVIDED	
S4	WALL MOUNT EXTERIOR INTERCOM SPEAKER	+10" AFF UNO	CONTRACTOR PROVIDED	
S5	PENDANT MOUNT INTERCOM SPEAKER	REFERENCE FLOOR PLANS	CONTRACTOR PROVIDED	
S6	SURFACE MOUNT INTERCOM SPEAKER, MOUNT TO STRUCTURE	CEILING	CONTRACTOR PROVIDED	
S7	CEILING MOUNTED EXTERIOR INTERCOM SPEAKER	CEILING	CONTRACTOR PROVIDED	
IP	IP BASED SPEAKER. # TO BE REPLACED WITH S. S2, S3, S4 INDICATING THE SPECIFIC TYPE OF SPEAKER.	REFERENCE FLOOR PLANS	CONTRACTOR PROVIDED	NOTE #5
IP	SPEAKER CONNECTED TO IP MODULE AND AMPLIFIER. # TO BE REPLACED WITH S. S2, S3, S4 INDICATING THE SPECIFIC TYPE OF SPEAKER.	REFERENCE FLOOR PLANS	CONTRACTOR PROVIDED	
VC	WALL MOUNTED VOLUME CONTROL	+48" AFF	4"X4"X2 1/8" BACK BOX WITH 1-G MUD RING, 1" C	
CB	INTERCOM CALL BUTTON	+48" AFF	4"X4"X2 1/8" BACK BOX WITH 1-G MUD RING, 1" C	
C	SINGLE FACE CLOCK	90" AFF UNO.	4"X4"X2 1/8" BACK BOX WITH 1-G MUD RING, 1" C	
C2	DOUBLE FACE CLOCK	90" AFF UNO.	4"X4"X2 1/8" BACK BOX WITH 1-G MUD RING, 1" C	
RPS	REMOTE PROGRAM SOURCE	DESK TOP	COORDINATE WITH EC	NOTE #5
ACS	ADMINISTRATIVE CALL STATION.	DESK TOP	N/A	NOTE #5

NOTES:  
1. #G INDICATES BACK BOX SIZE.  
2. #C INDICATES CONDUIT SIZE.  
3. UNO: UNLESS NOTED OTHERWISE.  
4. THE SYSTEM INTEGRATOR SHALL COORDINATE ALL BOX AND CONDUIT SIZE REQUIREMENTS PRIOR TO ROUGH-IN BY THE PROJECTS ELECTRICAL CONTRACTOR.  
5. PROVIDE AND INSTALL ONE (1) CATEGORY CABLE TO CONNECT DEVICE TO NETWORK

ACCESS CONTROL LEGEND				
SYMBOL	DESCRIPTION	ELEVATION	BACK BOX/RACEWAY	NOTES
ACP	ACCESS CONTROL SYSTEM, CONTROL PANEL.	+60" AFF TO CENTER	AS REQUIRED	COORDINATE POWER, NOTE #4.
CR	ACCESS CONTROL PROXIMITY CARD READER. DEFAULT SYMBOL INDICATES WALL MOUNTED *M - INDICATES MULLION MOUNTED READER	+42" A.F.F.	1-G, 3/4" C	
CR	DOOR MOUNTED ACCESS CONTROL PROXIMITY CARD READER THAT IS INTEGRATED INTO THE DOOR HARDWARE.	+42" AFF	N/A	
DS	2-WAY AUDIO/VIDEO INTERCOM DOOR STATION. *DEFAULT INDICATES WALL MOUNTED *M - INDICATES MULLION MOUNTED DEVICE	+42" AFF	"W: 1-G, 3/4" C "M: 3/4" C	COORDINATE POWER, NOTE #4 & #5.
DS	DOOR MOUNTED, 2-WAY AUDIO/VIDEO INTERCOM DOOR STATION.	+42" AFF, FIELD COORDINATE		COORDINATE POWER, NOTE #4
MS	2-WAY AUDIO/VIDEO INTERCOM MASTER STATION.	DESK MOUNTED UNO		COORDINATE POWER, NOTE #4
DR	DOOR RELEASE BUTTON	COORDINATE WITH GC	1-G, 3/4" C	
DH	PIR MOTION REQUEST TO EXIT DEVICE, DOOR CONTACT AND ELECTRIC STRIKE.			ACCESS CONTROL ONLY DOOR SHALL BE SPST. DOOR WITH BOTH ACCESS CONTROL AND INTRUSION SHALL BE DPDT. ONLY 1 DOOR CONTACT PER DOOR IF DH AND DC SYMBOL ARE SHOWN

NOTES:  
1. #G INDICATES BACK BOX SIZE.  
2. #C INDICATES CONDUIT SIZE.  
3. UNO: UNLESS NOTED OTHERWISE.  
4. PROVIDE AND INSTALL ONE (1) CATEGORY CABLE TO CONNECT DEVICE TO NETWORK  
5. AVIGLON PART #3.CC-HV1-R0-R

VIDEO SURVEILLANCE LEGEND				
SYMBOL	DESCRIPTION	ELEVATION	BACK BOX/RACEWAY	NOTES
W	WALL/CORNER MOUNT 4-SENSOR CAMERA	REFERENCE FLOOR PLANS	4"X4"X2 1/8" BACK BOX WITH 1-G MUD RING, 1" C	NOTE #5 AND 6
W	CEILING MOUNTED 4-SENSOR CAMERA	CEILING		NOTE #5
W	3-SENSOR CAMERA	CEILING UNO		NOTE #5 AND 6
W	2-SENSOR CAMERA	REFERENCE FLOOR PLANS	4"X4"X2 1/8" BACK BOX WITH 1-G MUD RING, 1" C	NOTE #5
W	1-SENSOR CAMERA	REFERENCE FLOOR PLANS	4"X4"X2 1/8" BACK BOX WITH 1-G MUD RING, 1" C	NOTE #6
W	SYMBOL ADDED TO CAMERA TO INDICATE WALL MOUNT.	+9" AFF UNO		NOTE #6

NOTES:  
1. #G INDICATES BACK BOX SIZE.  
2. #C INDICATES CONDUIT SIZE.  
3. UNO: UNLESS NOTED OTHERWISE.  
4. THE SYSTEM INTEGRATOR SHALL COORDINATE ALL BOX AND CONDUIT SIZE REQUIREMENTS PRIOR TO ROUGH-IN BY THE PROJECTS ELECTRICAL CONTRACTOR.  
5. PROVIDE AND INSTALL ONE (1) CATEGORY CABLE TO CONNECT DEVICE TO NETWORK

INTRUSION LEGEND				
SYMBOL	DESCRIPTION	ELEVATION	BACK BOX/RACEWAY	NOTES
IDP	INTRUSION DETECTION SYSTEM CONTROL PANEL	+60" AFF	TWO(2) - 1" C TO CONTRACTOR PROVIDED BACK BOX	COORDINATE POWER WITH EC, NOTE #5
KP	INTRUSION DETECTION SYSTEM KEYPAD.	+48" AFF TO TOP	4"X4"X2 1/8" BACK BOX WITH 1-G MUD RING, 1" C	
W	WALL MOUNTED MOTION DETECTOR *# = LR IF LONG RANGE	REFERENCE FLOOR PLAN	N/A	
W	CEILING MOUNTED GLASS BREAK DETECTOR	CEILING	N/A	
DC	DOOR CONTACT	FLUSH MOUNTED IN DOOR FRAME	N/A	INTRUSION ONLY DOOR SHALL BE SPST. DOOR WITH BOTH ACCESS CONTROL AND INTRUSION SHALL BE DPDT. ONLY 1 DOOR CONTACT PER DOOR IF DH AND DC SYMBOL ARE SHOWN
ODC	OVERHEAD DOOR MOUNT MAGNETIC DOOR CONTACT.	SURFACE MOUNTED ON DOOR FRAME	N/A	NOTE #4
WHU	WIRELESS HOLD UP BUTTON & TRANSMITTER		N/A	
SS	SECURITY SIREN	+9" AFF	SINGLE GANG BACKBOX	

NOTES:  
1. #G INDICATES BACK BOX SIZE.  
2. #C INDICATES CONDUIT SIZE.  
3. UNO: UNLESS NOTED OTHERWISE.  
4. WHU REQUIRES RECEIVER. REFERENCE SECURITY SHEET SPECIFICATIONS FOR PART NUMBERS.  
5. PROVIDE AND INSTALL ONE (1) CATEGORY CABLE TO CONNECT DEVICE TO NETWORK

FIRE ALARM LEGEND	
SYMBOL	DESCRIPTION
FACP	FIRE ALARM CONTROL
FAP	FIRE ALARM ANNUNCIATOR PANEL
NAC	NOTIFICATION APPLIANCE

NOTES:  
1. REFERENCE SHEET SPECIFICATIONS  
2. A LICENSED FIRE ALARM PLANNING SUPERINTENDENT CERTIFIED TO A MINIMUM LEVEL 3, IN THE SUBFIELD OF FIRE ALARM SYSTEMS THROUGH THE NATIONAL INSTITUTE FOR CERTIFICATION IN ENGINEERING TECHNOLOGIES (NICET), SHALL PROVIDE PLANS AND CALCULATIONS FOR A MANUAL AND AUTOMATIC FIRE DETECTION AND ALARM SYSTEM TO COMPLY WITH THE BUILDING SPACE LAYOUT, BUILDING OCCUPANCY, CURRENT NFPA 72, LOCAL AND STATE CODE REQUIREMENTS, AND THE FIRE ALARM AND DETECTION SYSTEM SPECIFICATIONS.

SUBSCRIPTS AND ABBREVIATIONS	
TEXT	DESCRIPTION
'WP'	DEVICE SHALL BE WEATHER PROOF AND RATED FOR EXTERIOR CONDITIONS
•	NEXT TO ANY SYMBOL, INDICATES DEVICE ROUGH-IN SHALL BE ABOVE COUNTER. FINAL ROUGH-IN FIELD COORDINATION TO BY CONTRACTOR WITH ARCHITECTURAL, MILLWORK DRAWINGS AND OTHER TRADES.
AFF	ABOVE FINISHED FLOOR
'UC'	DEVICE IS TO BE MOUNTED ON THE UNDERSIDE OF THE ELEVATED CANOPY.
'WM'	DEVICE IS TO BE WALL MOUNTED.
'WG'	WIRE GUARD TO BE PROVIDED AND INSTALLED TO PROTECT ASSOCIATED DEVICE.

SUBSCRIPTS LEGEND - EXISTING DEVICES	
TEXT	DESCRIPTION
'E'	EXISTING TO REMAIN.
'D'	DEVICE IS EXISTING AND IS TO BE REMOVED. CONTRACTOR TO REMOVE THE DEVICE AND RETURN TO OWNER.
'R'	REMOVE EXISTING DEVICE AND RELOCATE TO A LOCATION INDICATED ON THE DRAWINGS.

NOTES TO CONTRACTOR	
1.	EVERY SYMBOL SHOWN ON LEGEND MAY NOT APPEAR ON DRAWINGS.
2.	SYSTEM INSTALLERS SHALL COORDINATE LOCATIONS AND CONNECTIONS WITH THE PROJECTS ELECTRICAL CONTRACTOR.
3.	CONTRACTOR TO PROVIDE PROPERLY GROUNDED LIGHTING PROTECTION ON ALL CABLING ENTERING AND EXITING THE BUILDING.

RESPONSIBILITY MATRIX			
SCOPE ITEM	RESPONSIBILITY	NOTES	
COMMUNICATIONS - DIVISION 27	OFI	CFI	OFI
CATEGORY 6 STRUCTURED CABLING SYSTEM (SCS)		✓	
INTERACTIVE VIDEO DISPLAYS		✓	
BUILDING INTERCOMPA, BELL, AND CLOCK SYSTEM		✓	
→ NETWORK SWITCHES		✓	
NETWORK EQUIPMENT			
→ MDF/IDF NETWORK EQUIPMENT		✓	
→ VOIP TELEPHONES		✓	
→ WIRELESS ACCESS POINTS		✓	
→ UNINTERRUPTIBLE POWER SUPPLIES (UPS)		✓	
RACEWAY: CONDUIT, BACK BOXES, ETC.		✓	SEE NOTE 1.
ELECTRICAL POWER		✓	SEE NOTE 1.
LIFE SAFETY AND SECURITY - DIVISION 28	OFI	CFI	OFI
ACCESS CONTROL SYSTEM(ACS)		✓	
INTRUSION DETECTION SYSTEM		✓	
DOOR ACCESS VIDEO INTERCOM SYSTEM		✓	
VIDEO SURVEILLANCE SYSTEM (VSS)			
→ VSS SERVERS		✓	
→ VSS CAMERAS		✓	
→ VSS PROGRAMMING		✓	
→ VSS CABLING		✓	SEE NOTE 2.
FIRE ALARM SMOKE DETECTION WITH VOICE EVACUATION		✓	
RACEWAY: CONDUIT, BACK BOXES, SLEEVES, ETC.		✓	SEE NOTE 1.
ELECTRICAL POWER		✓	SEE NOTE 1.
OFI - OWNER FURNISHED AND OWNER INSTALLED CFI - CONTRACTOR FURNISHED AND CONTRACTOR INSTALLED OFI - OWNER FURNISHED AND CONTRACTOR INSTALLED			
RESPONSIBILITY MATRIX NOTES: 1. BY DIVISION 26. 2. BY DIVISION 27.			

TECHNOLOGY SHEET INDEX	
T000	TECHNOLOGY TITLE SHEET
T001	TECHNOLOGY SITE PLAN
T101	TECHNOLOGY COMPOSITE PLANS
T201	TECHNOLOGY PLAN - FIRST FLOOR
T202	TECHNOLOGY PLAN - SECOND FLOOR
T501	TECHNOLOGY DETAILS
T502	TECHNOLOGY DETAILS
T503	TECHNOLOGY DETAILS
T504	TECHNOLOGY DETAILS
T601	TECHNOLOGY SPECIFICATIONS
T602	TECHNOLOGY SPECIFICATIONS
T603	TECHNOLOGY SPECIFICATIONS
T604	TECHNOLOGY SPECIFICATIONS

**ACTIVE DAS HYBRID SYSTEM NOTE**  
 CONTRACTOR TO PROVIDE AND INSTALL A COMPLETE AND FUNCTIONING DAS SYSTEM IN THE STORM SHELTER PORTION OF THE BUILDING.  
 CONTRACTOR SHALL PROVIDE AND INSTALL A CEL-FI QUATRA 4000c SYSTEM BY NEXTIVITY.  
 REFERENCE SHEET SPECIFICATIONS FOR PRODUCTS, INSTALLATION INSTRUCTIONS AND ADDITIONAL INFORMATION.

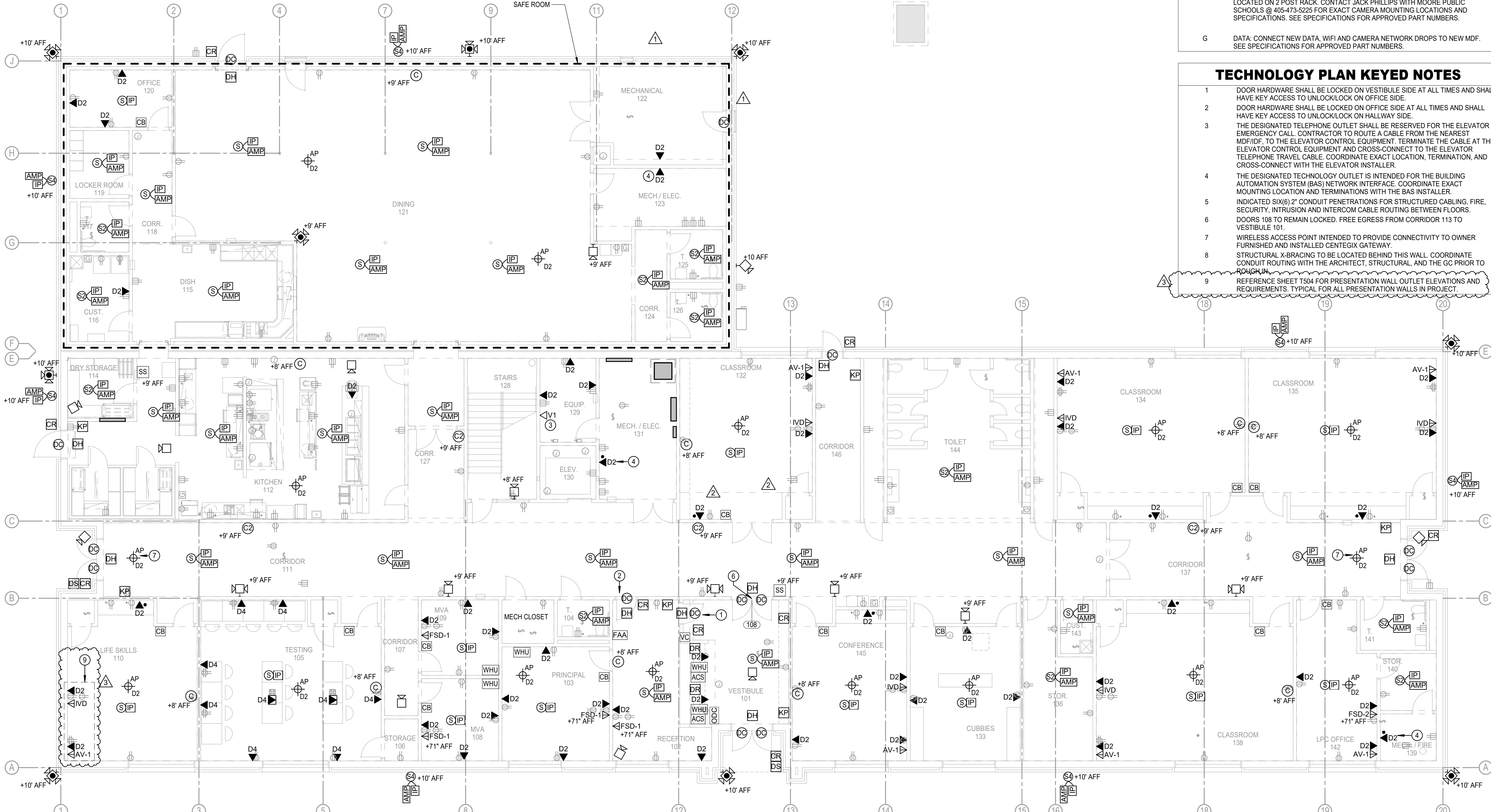
**SAFEROOM NOTES**  
 PER ICC 500-2014, 309.1:  
 PENETRATIONS THROUGH THE STORM SHELTER ENVELOPE THAT ARE LARGER THAN:  
 1. 3.5" SQUARE INCHES IN AREA FOR RECTANGULAR OPENINGS, OR  
 2. 2 1/16" IN DIAMETER  
 SHALL BE CONSIDERED AN OPENING AND SHALL BE PROVIDED WITH AN OPENING PROTECTIVE DEVICE (SHROUD). REFERENCE STRUCTURAL DRAWINGS FOR A SAMPLE SHROUD DETAIL. THIS INCLUDES PENETRATIONS FOR BUNDLES OF CONDUIT.

**TECHNOLOGY PLAN GENERAL NOTES**

- A FIRE ALARM: CONNECT NEW FIRE ALARM DEVICES TO NEW SILENT KNIGHT 6820EVS. SUPPLY 6820EVS PANEL AND ALL NAC PANELS, POWER SUPPLIES, ETC. NEEDED TO MAKE A COMPLETE AN CODE COMPLIANT SYSTEM. SYSTEM SHALL USE 3K PROTOCOL DEVICES ONLY. SEE SPECIFICATIONS FOR APPROVED PART NUMBERS.
- B SECURITY ALARM: CONNECT ALL NEW SECURITY ALARM DEVICES TO NEW DMP SECURITY ALARM PANEL. SUPPLY DMP PANEL AND ALL ZONE EXPANDERS, POWER SUPPLIES, ETC. NEEDED TO MAKE A COMPLETE SYSTEM. SYSTEM SHALL BE WIRED WITH 2 ZONES PER SINGLE DOOR OR DOUBLE DOOR. ONE ZONE FOR SECURITY ALARM AND ONE ZONE FOR DOOR HOLD OPEN ALERTS. SEE SPECIFICATIONS FOR APPROVED PART NUMBERS.
- C INTERCOM: INTERCOM DEVICES SHALL BE RAULAND. CONNECT ALL NEW INTERCOM DEVICES TO EXISTING RAULAND TELECENTER U.I.P. SUPPLY ALL MASTER CONSOLES, AMPLIFIERS, POWER SUPPLIES, MODULES, CALL BUTTONS, ETC. NEEDED TO MAKE A COMPLETE SYSTEM. SEE SPECIFICATIONS FOR APPROVED PART NUMBERS.
- D CLOCKS: CLOCKS SHALL BE DIGITAL SAPLING CLOCKS. SEE SHEET SPECIFICATIONS FOR APPROVED PART NUMBERS.
- E ACCESS CONTROL: CONNECT ALL NEW ACCESS CONTROL DEVICES TO NEW KEYSKAN CONTROLLERS. SUPPLY KEYSKAN CONTROLLERS AND ALL POWER SUPPLIES, READERS, STRIKES, ETC. NEEDED TO FURNISH A COMPLETE SYSTEM. SEE SPECIFICATIONS FOR APPROVED PART NUMBERS.
- F CAMERA: CONNECT ALL NEW CAMERAS TO NEW MDF. CAMERA SYSTEM IS AVIGILON. CONTRACTOR TO PROVIDE DELL AVIGILON SERVER IN MDF ROOM LOCATED ON 2 POST RACK. CONTACT JACK PHILLIPS WITH MOORE PUBLIC SCHOOLS @ 405-473-9225 FOR EXACT CAMERA MOUNTING LOCATIONS AND SPECIFICATIONS. SEE SPECIFICATIONS FOR APPROVED PART NUMBERS.
- G DATA: CONNECT NEW DATA, WIFI AND CAMERA NETWORK DROPS TO NEW MDF. SEE SPECIFICATIONS FOR APPROVED PART NUMBERS.

**TECHNOLOGY PLAN KEYED NOTES**

- 1 DOOR HARDWARE SHALL BE LOCKED ON VESTIBULE SIDE AT ALL TIMES AND SHALL HAVE KEY ACCESS TO UNLOCK/LOCK ON OFFICE SIDE.
- 2 DOOR HARDWARE SHALL BE LOCKED ON OFFICE SIDE AT ALL TIMES AND SHALL HAVE KEY ACCESS TO UNLOCK/LOCK ON HALLWAY SIDE.
- 3 THE DESIGNATED TELEPHONE OUTLET SHALL BE RESERVED FOR THE ELEVATOR EMERGENCY CALL. CONTRACTOR TO ROUTE A CABLE FROM THE NEAREST MDF/IDF TO THE ELEVATOR CONTROL EQUIPMENT. TERMINATE THE CABLE AT THE ELEVATOR CONTROL EQUIPMENT AND CROSS-CONNECT TO THE ELEVATOR TELEPHONE TRAVEL CABLE. COORDINATE EXACT LOCATION, TERMINATION, AND CROSS-CONNECT WITH THE ELEVATOR INSTALLER.
- 4 THE DESIGNATED TECHNOLOGY OUTLET IS INTENDED FOR THE BUILDING AUTOMATION SYSTEM (BAS) NETWORK INTERFACE. COORDINATE EXACT MOUNTING LOCATION AND TERMINATIONS WITH THE BAS INSTALLER.
- 5 INDICATED SIX(6) 2" CONDUIT PENETRATIONS FOR STRUCTURED CABLING, FIRE, SECURITY, INTRUSION AND INTERCOM CABLE ROUTING BETWEEN FLOORS.
- 6 DOORS 108 TO REMAIN LOCKED. FREE EGRESS FROM CORRIDOR 113 TO VESTIBULE 101.
- 7 WIRELESS ACCESS POINT INTENDED TO PROVIDE CONNECTIVITY TO OWNER FURNISHED AND INSTALLED CENTEGIX GATEWAY.
- 8 STRUCTURAL X-BRACING TO BE LOCATED BEHIND THIS WALL. COORDINATE CONDUIT ROUTING WITH THE ARCHITECT, STRUCTURAL, AND THE GC PRIOR TO INSTALLATION.
- 9 REFERENCE SHEET T504 FOR PRESENTATION WALL OUTLET ELEVATIONS AND REQUIREMENTS. TYPICAL FOR ALL PRESENTATION WALLS IN PROJECT.



**1 TECHNOLOGY PLAN - FIRST FLOOR**  
 Scale: 1/8" = 1'-0"

NY  
 drawn by  
 AY  
 checked by  
 FEBRUARY 2026  
 date

REVISIONS

Δ	DESCRIPTION	DATE
1	ADD 01	03/26/2026
2	ADD 02	04/13/2026
3	ADD 04	04/22/2026



OLD SCHOOL  
 REPLACEMENT

sheet no:  
**T201**

**Salas O'Brien**  
 Oklahoma City  
 2900 S. Telephone Road, suite 120  
 Moore, OK 73160  
 CA# 7058 Expiration Date: 06/30/27  
 Salas O'Brien Project Number: 2550-01554-00

OWNERSHIP USE OF DOCUMENTS:  
 AGP EXPRESSLY RESERVES ITS  
 COPYRIGHT AND OTHER PROPERTY  
 RIGHTS OF ALL PLANS AND DRAWINGS  
 DESIGNED AND/OR PRODUCED. PLANS  
 AND DRAWINGS ARE NOT TO BE  
 REPRODUCED IN ANY FORM OR MANNER  
 WITHOUT THE EXPRESSED WRITTEN  
 CONSENT OF AGP.

REVISIONS

Δ	DESCRIPTION	DATE
1	ADD 02	04/13/2026
2	ADD 04	04/22/2026



OLD SCHOOL  
REPLACEMENT

sheet no:

**T202**

OWNERSHIP USE OF DOCUMENTS:

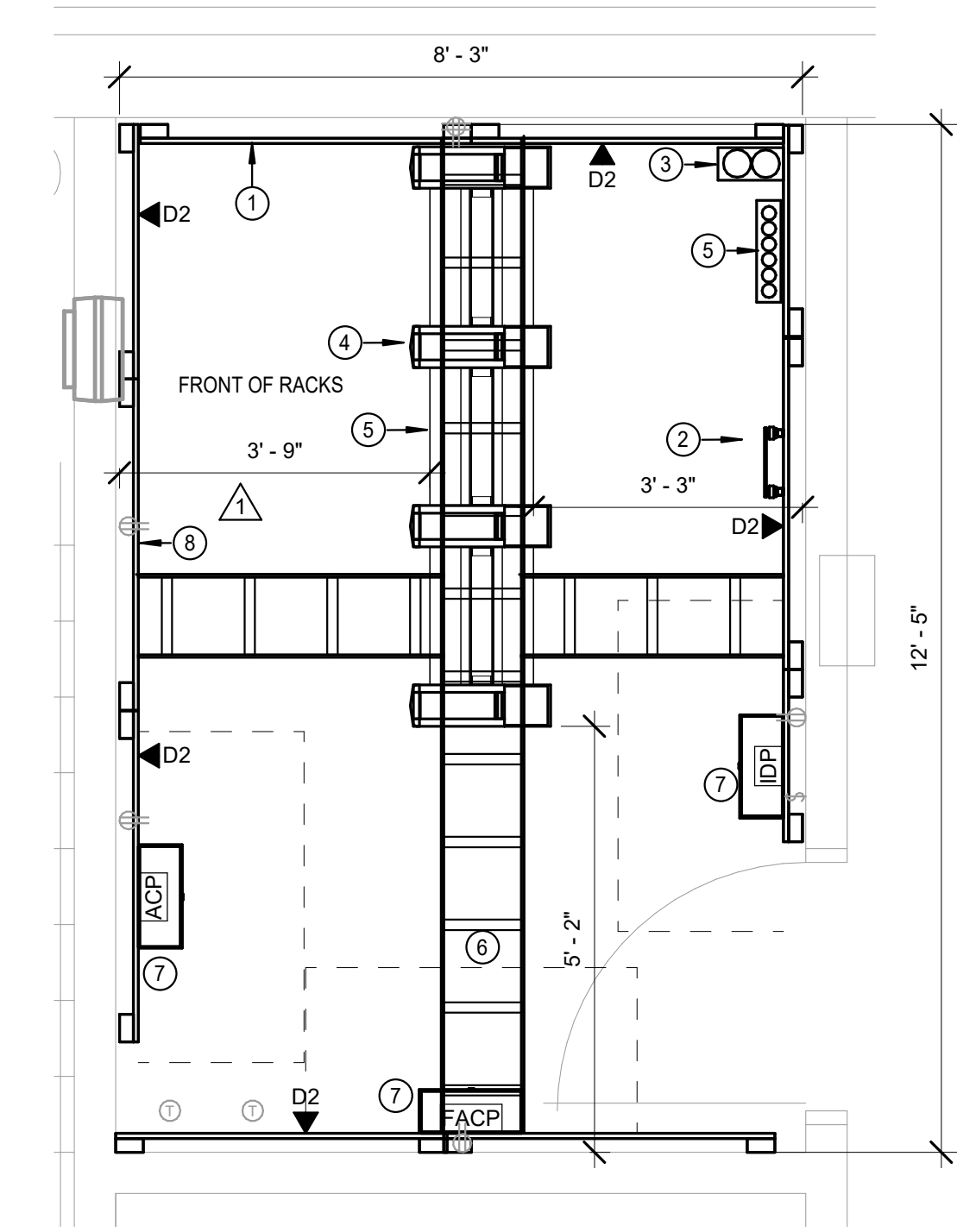
AGP EXPRESSLY RESERVES ITS  
COPYRIGHT AND OTHER PROPERTY  
RIGHTS OF ALL PLANS AND DRAWINGS  
DESIGNED AND/OR PRODUCED. PLANS  
AND DRAWINGS ARE NOT TO BE  
REPRODUCED IN ANY FORM OR MANNER  
WITHOUT THE EXPRESSED WRITTEN  
CONSENT OF AGP.



Oklahoma City  
2900 S. Telephone Road, suite 120  
Moore, OK 73160  
CA# 7088 Expiration Date: 06/30/27  
Salas O'Brien Project Number: 2550-01554-00

- ### TECH ENLARGED PLAN KEYED NOTES
- INDICATES THE LOCATION OF A 8' TALL, 3/4" FIRE RATED PLYWOOD CONTRACTOR TO PROVIDE AND INSTALL PLYWOOD AND ALL REQUIRED MOUNTING HARDWARE. PLYWOOD SHALL BE PAINTED WHITE WITH FIRE RATED PAINT. TYPICAL FOR ALL SHOWN ON DRAWING.
  - INDICATES THE LOCATION OF A NEW WALL MOUNTED TELECOMMUNICATION GROUND BUS BAR (TGBB). CABLING CONTRACTOR TO PROVIDE BUS BAR AND ALL REQUIRED MATERIAL TO MOUNT AT THE LOCATION SHOWN. TGBB TO BE MOUNTED AT +8' A.F.F.
  - INDICATES WHERE ALL BELOW GRADE CONDUITS SHALL STUB UP IN THIS ROOM. CONDUITS SHALL STUB EVENLY AT +8' AFF. PROVIDE PROTECTIVE BUSHINGS ON ALL CONDUITS AND SEAL ALL USED AND UNUSED UPON COMPLETION OF THE PROJECT.
  - PROVIDE AND INSTALL ONE (1) 7X6" FRONT AND REAR MANAGED, VERTICAL CABLE MANAGER (BLACK IN COLOR). CABLE MANAGERS SHALL BE INSTALLED ON EACH END OF THE RACK SYSTEMS AND BETWEEN EACH RACK. CABLE MANAGERS SHALL HAVE A SINGLE, SOLID, FULL HEIGHT HINGED DOOR IN THE FRONT AND WIDE SPACED CABLE RINGS WITH SPIN-OPEN LATCHES IN THE REAR. TYPICAL FOR ALL SHOWN IN THE ENTIRE PROJECT.
  - PROVIDE AND INSTALL ONE (1) 2-POST, FLOOR MOUNTED, 7 RAY RACK (BLACK IN COLOR). PROVIDE BONDING WASHERS, BOLTS, AND NUTS AT ALL MECHANICALLY CONNECTED LOCATIONS OF THE RACK TO ENSURE THAT ALL PIECES OF THE RACK ARE COMPLETELY BONDED. SCRAPING PAINT FROM RACKS TO MAKE A BOND WILL NOT BE ACCEPTED. ALL RACK MOUNTED COMPONENTS SHALL BE MOUNTED WITH BONDING SCREWS AND THE CONTRACTOR SHALL PROVIDE THE OWNER WITH (50) ADDITIONAL BONDING SCREWS FOR THE INSTALLATION OF OWNER EQUIPMENT. NO DAISY CHAINING GROUNDS FROM RACK TO CABLE TRAY OR TO OTHER RACKS WILL BE ACCEPTED. ALL GROUNDS SHALL BE HOME RUN TO THE TELECOMMUNICATIONS GROUND BUS BAR (TGBB). TYPICAL FOR ALL SHOWN ON THE ENTIRE PROJECT.
  - PROVIDE AND INSTALL A 12" WIDE, UNIVERSAL LADDER TRAY AND ALL REQUIRED MOUNTING HARDWARE. LADDER TRAY SHALL BE BLACK IN COLOR. TYPICAL FOR ALL SHOWN ON ENTIRE PROJECT.
  - CONTRACTOR TO PROVIDE AND INSTALL ONE(1) NETWORK CONNECTION TO INDICATED PANEL.
  - APPROXIMATE LOCATION OF DAS NEXTIVITY CEL-FI QUATRA 4000C NETWORK UNIT. CONTRACTOR TO PROVIDE AND INSTALL A DEDICATED 120V CONNECTION. CONTRACTOR TO ALSO PROVIDE ONE(1) NETWORK CONNECTION TO THE NETWORK UNIT FOR SYSTEM MONITORING AND MANAGEMENT. COORDINATE FINAL MOUNTING HEIGHT WITH OWNER AND MANUFACTURER INSTALLATION INSTRUCTIONS.

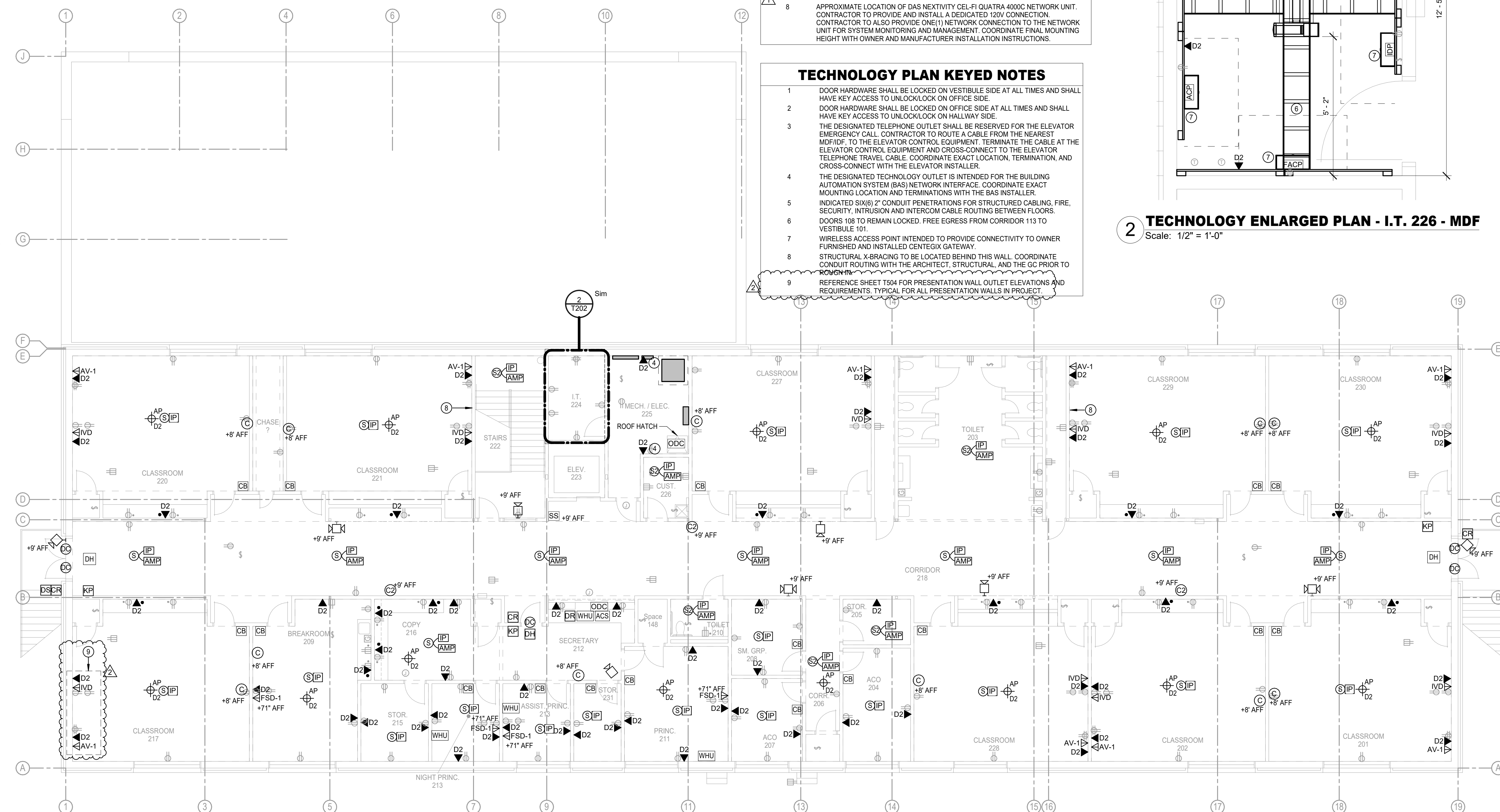
- ### TECHNOLOGY PLAN KEYED NOTES
- DOOR HARDWARE SHALL BE LOCKED ON VESTIBULE SIDE AT ALL TIMES AND SHALL HAVE KEY ACCESS TO UNLOCK/LOCK ON OFFICE SIDE.
  - DOOR HARDWARE SHALL BE LOCKED ON OFFICE SIDE AT ALL TIMES AND SHALL HAVE KEY ACCESS TO UNLOCK/LOCK ON HALLWAY SIDE.
  - THE DESIGNATED TELEPHONE OUTLET SHALL BE RESERVED FOR THE ELEVATOR EMERGENCY CALL. CONTRACTOR TO ROUTE A CABLE FROM THE NEAREST MFD/IDF TO THE ELEVATOR CONTROL EQUIPMENT. TERMINATE THE CABLE AT THE ELEVATOR CONTROL EQUIPMENT AND CROSS-CONNECT TO THE ELEVATOR TELEPHONE TRAVEL CABLE. COORDINATE EXACT LOCATION, TERMINATION, AND CROSS-CONNECT WITH THE ELEVATOR INSTALLER.
  - THE DESIGNATED TECHNOLOGY OUTLET IS INTENDED FOR THE BUILDING AUTOMATION SYSTEM (BAS) NETWORK INTERFACE. COORDINATE EXACT MOUNTING LOCATION AND TERMINATIONS WITH THE BAS INSTALLER.
  - INDICATED SIX(6) 2" CONDUIT PENETRATIONS FOR STRUCTURED CABLING, FIRE, SECURITY, INTRUSION AND INTERCOM CABLE ROUTING BETWEEN FLOORS.
  - DOORS 108 TO REMAIN LOCKED. FREE EGRESS FROM CORRIDOR 113 TO VESTIBULE 101
  - WIRELESS ACCESS POINT INTENDED TO PROVIDE CONNECTIVITY TO OWNER FURNISHED AND INSTALLED CENTEGIX GATEWAY.
  - STRUCTURAL X-BRACING TO BE LOCATED BEHIND THIS WALL. COORDINATE CONDUIT ROUTING WITH THE ARCHITECT, STRUCTURAL, AND THE GC PRIOR TO PROCEEDING.
  - REFERENCE SHEET T201 FOR PRESENTATION WALL OUTLET ELEVATIONS AND REQUIREMENTS. TYPICAL FOR ALL PRESENTATION WALLS IN PROJECT.



**2 TECHNOLOGY ENLARGED PLAN - I.T. 226 - MDF**  
Scale: 1/2" = 1'-0"

- ### TECHNOLOGY PLAN GENERAL NOTES
- FIRE ALARM: CONNECT NEW FIRE ALARM DEVICES TO NEW SILENT KNIGHT 6820EVS. SUPPLY 6820EVS PANEL AND ALL NAC PANELS, POWER SUPPLIES, ETC. NEEDED TO MAKE A COMPLETE AN CODE COMPLIANT SYSTEM. SYSTEM SHALL USE SK PROTOCOL DEVICES ONLY. SEE SPECIFICATIONS FOR APPROVED PART NUMBERS.
  - SECURITY ALARM: CONNECT ALL NEW SECURITY ALARM DEVICES TO NEW DMP SECURITY ALARM PANEL. SUPPLY DMP PANEL AND ALL ZONE EXPANDERS, POWER SUPPLIES, ETC. NEEDED TO MAKE A COMPLETE SYSTEM. SYSTEM SHALL BE WIRED WITH 2 ZONES PER SINGLE DOOR OR DOUBLE DOOR. ONE ZONE FOR SECURITY ALARM AND ONE ZONE FOR DOOR HOLD OPEN ALERTS. SEE SPECIFICATIONS FOR APPROVED PART NUMBERS.
  - INTERCOM: INTERCOM DEVICES SHALL BE RAULAND. CONNECT ALL NEW INTERCOM DEVICES TO EXISTING RAULAND TELECENTER U.I.P. SUPPLY ALL MASTER CONSOLES, AMPLIFIERS, POWER SUPPLIES, MODULES, CALL BUTTONS, ETC. NEEDED TO MAKE A COMPLETE SYSTEM. SEE SPECIFICATIONS FOR APPROVED PART NUMBERS.
  - CLOCKS: CLOCKS SHALL BE DIGITAL SAPLING CLOCKS. SEE SHEET SPECIFICATIONS FOR APPROVED PART NUMBERS.
  - ACCESS CONTROL: CONNECT ALL NEW ACCESS CONTROL DEVICES TO NEW KEYSAN CONTROLLERS. SUPPLY KEYSAN CONTROLLERS AND ALL POWER SUPPLIES, READERS, STRIKES, ETC. NEEDED TO FURNISH A COMPLETE SYSTEM. SEE SPECIFICATIONS FOR APPROVED PART NUMBERS.
  - CAMERA: CONNECT ALL NEW CAMERAS TO NEW MDF. CAMERA SYSTEM IS AVIGILON. CONTRACTOR TO PROVIDE DELL AVIGILON SERVER IN MDF ROOM LOCATED ON 2 POST RACK. CONTACT JACK PHILLIPS WITH MOORE PUBLIC SCHOOLS @ 405-473-5225 FOR EXACT CAMERA MOUNTING LOCATIONS AND SPECIFICATIONS. SEE SPECIFICATIONS FOR APPROVED PART NUMBERS.
  - DATA: CONNECT NEW DATA, WIFI AND CAMERA NETWORK DROPS TO NEW MDF. SEE SPECIFICATIONS FOR APPROVED PART NUMBERS.

- ### TECH ENLARGED PLAN GENERAL NOTES
- ALL RACK LOCATIONS SHALL BE COORDINATED WITH THE PROJECTS TECHNOLOGY CONSULTANT AND OWNER PRIOR TO INSTALLATION. NO RACKS AND/OR ASSOCIATED CABLE TRAY SYSTEM SHALL BE PERMANENTLY INSTALLED PRIOR TO DOCUMENTED ACCEPTANCE.
  - PATCH PANEL QUANTITY SHALL BE DETERMINED BY STATION CABLE DROP COUNTS SHOWN ON TECHNOLOGY PLANS AND THE ASSOCIATED PROJECT MATRIX. ENSURE PATCH PANEL QUANTITY IS SUFFICIENT TO SUPPORT THE NUMBER OF PORTS REQUIRED BY TECHNOLOGY PLANS PLUS AN ADDITIONAL 25% FOR FUTURE GROWTH.
  - CONTRACTOR SHALL NOT MOUNT EXCEED MORE THAN A 50% RACK FILL RATIO ON ANY RACK.
  - REFERENCE SPECIFICATIONS FOR MATERIALS AND METHODS
  - ALL RACKS, LADDER TRAYS, LIGHTNING PROTECTION ENCLOSURES AND ANY OTHER DEVICES, PART OF THE STRUCTURED CABLING SYSTEM SHALL BE GROUNDED TO A GROUND BUS BAR LOCATED IN THE TELECOMMUNICATIONS ROOM WITH A #6AWG GROUND CABLE. DAISY CHAINING WILL NOT BE ACCEPTED. ALL ITEMS SHALL HAVE A DEDICATED GROUND CABLE TO BUS BAR. GROUND CABLE SHALL BE GREEN IN COLOR.

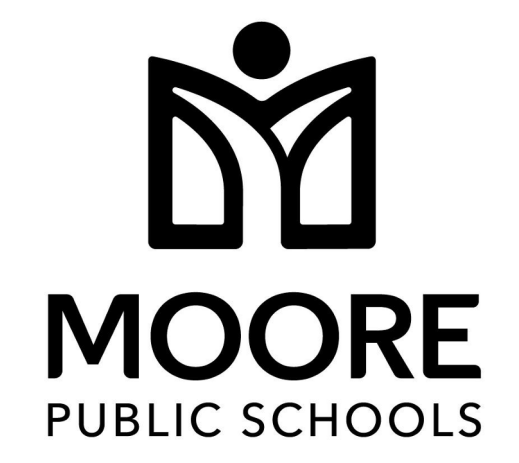


**1 TECHNOLOGY PLAN - SECOND FLOOR**  
Scale: 1/8" = 1'-0"



DWG  
drawn by  
TVO  
checked by  
FEBRUARY 2026  
date

REVISIONS		
Δ	DESCRIPTION	DATE
1	ADD 02	04/13/2026
2	ADD 04	04/22/2026



OLD SCHOOL  
REPLACEMENT

sheet no:

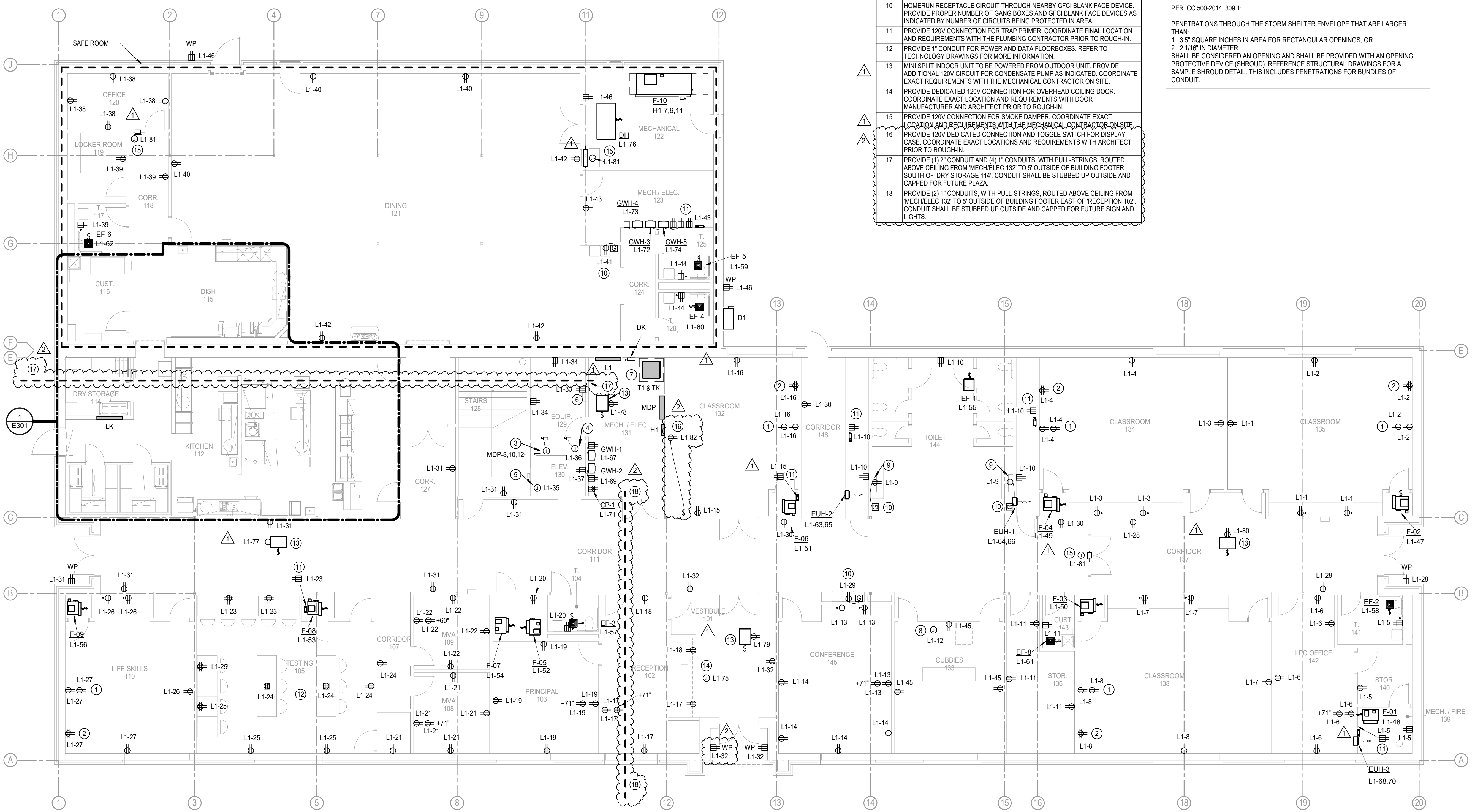
## E201

OWNERSHIP USE OF DOCUMENTS:  
AGP EXPRESSLY RESERVES ITS  
COPYRIGHT AND OTHER PROPERTY  
RIGHTS OF ALL PLANS AND DRAWINGS  
DESIGNED AND/OR PRODUCED. PLANS  
AND DRAWINGS ARE NOT TO BE  
REPRODUCED IN ANY FORM OR MANNER  
WITHOUT THE EXPRESSED WRITTEN  
CONSENT OF AGP.

KEYED NOTES	
1	PROVIDE 120V CONNECTION FOR SMARTBOARD. COORDINATE FINAL LOCATION AND REQUIREMENTS WITH THE OWNER/ARCHITECT PRIOR TO ROUGH-IN. REFER TO DETAIL 'E501/8' FOR ADDITIONAL INFORMATION.
2	APPROXIMATE LOCATION OF TEACHERS DESK. COORDINATE FINAL LOCATION AND REQUIREMENTS WITH THE OWNER/ARCHITECT PRIOR TO ROUGH-IN. REFER TO DETAIL 'E501/8' FOR ADDITIONAL INFORMATION.
3	PROVIDE 480V 3-PHASE CONNECTION FOR ELEVATOR. COORDINATE EXACT CONNECTION REQUIREMENTS WITH MANUFACTURER AND EXACT LOCATION WITH THE ARCHITECT/OWNER PRIOR TO ROUGH-IN. LOCATE FUSED DISCONNECT WITHIN ADJACENT MACHINE ROOM. ELEVATOR SHALL BE PROVIDED WITH BATTERY BACKUP FOR EMERGENCY OPERATIONS. REFER TO MANUFACTURER AND ARCHITECTURAL SPECIFICATIONS FOR ADDITIONAL INFORMATION.
4	PROVIDE 120V DEDICATED CONNECTION FOR ELEVATOR CAR CONTROLS, LIGHTS, AND FAN. LOCATE DISCONNECT WITHIN ADJACENT MACHINE ROOM. COORDINATE EXACT REQUIREMENTS WITH THE ARCHITECT AND MANUFACTURER PRIOR TO ROUGH-IN.
5	PROVIDE 120V DEDICATED CONNECTION FOR ELEVATOR EMERGENCY OPERATION BATTERY. COORDINATE EXACT LOCATION AND REQUIREMENTS WITH THE ARCHITECT AND MANUFACTURER PRIOR TO ROUGH-IN.
6	PROVIDE 120V CONNECTION FOR ELEVATOR CONTROL PANEL AND SUMP PUMP 'SP-1'. COORDINATE FINAL LOCATION AND REQUIREMENTS WITH THE ARCHITECT, PLUMBING CONTRACTOR, AND MANUFACTURER PRIOR TO ROUGH-IN.
7	STACKED TRANSFORMERS. REFER TO DETAIL 'E502/1' FOR ADDITIONAL INFORMATION.
8	PROVIDE DEDICATED 120V CONNECTION FOR METAL DETECTOR. COORDINATE EXACT LOCATION AND REQUIREMENTS WITH THE ARCHITECT AND METAL DETECTOR INSTALLER ON SITE.
9	PROVIDE 120V CONNECTION FOR LAVATORY. COORDINATE EXACT LOCATION AND CONNECTION REQUIREMENTS WITH THE ARCHITECT AND PLUMBING CONTRACTOR PRIOR TO ROUGH-IN.
10	HOMERUN RECEPTACLE CIRCUIT THROUGH NEARBY GFCI BLANK FACE DEVICE. PROVIDE PROPER NUMBER OF GANG BOXES AND GFCI BLANK FACE DEVICES AS INDICATED BY NUMBER OF CIRCUITS BEING PROTECTED IN AREA.
11	PROVIDE 120V CONNECTION FOR TRAP PRIMER. COORDINATE FINAL LOCATION AND REQUIREMENTS WITH THE PLUMBING CONTRACTOR PRIOR TO ROUGH-IN.
12	PROVIDE 1" CONDUIT FOR POWER AND DATA FLOORBOXES. REFER TO TECHNOLOGY DRAWINGS FOR MORE INFORMATION.
13	MINI SPLIT INDOOR UNIT TO BE POWERED FROM OUTDOOR UNIT. PROVIDE ADDITIONAL 120V CIRCUIT FOR CONDENSATE PUMP AS INDICATED. COORDINATE EXACT REQUIREMENTS WITH THE MECHANICAL CONTRACTOR ON SITE.
14	PROVIDE DEDICATED 120V CONNECTION FOR OVERHEAD COILING DOOR. COORDINATE EXACT LOCATION AND REQUIREMENTS WITH DOOR MANUFACTURER AND ARCHITECT PRIOR TO ROUGH-IN.
15	PROVIDE 120V CONNECTION FOR SMOKE DAMPER. COORDINATE EXACT LOCATION AND REQUIREMENTS WITH THE MECHANICAL CONTRACTOR ON SITE.
16	PROVIDE 120V DEDICATED CONNECTION AND TOGGLE SWITCH FOR DISPLAY CASE. COORDINATE EXACT LOCATIONS AND REQUIREMENTS WITH ARCHITECT PRIOR TO ROUGH-IN.
17	PROVIDE (1) 2" CONDUIT AND (4) 1" CONDUITS, WITH PULL-STRINGS, ROUTED ABOVE CEILING FROM MECH/ELEC 132 TO 5' OUTSIDE OF BUILDING FOOTER SOUTH OF 'DRY STORAGE 114'. CONDUIT SHALL BE STUBBED UP OUTSIDE AND CAPPED FOR FUTURE PLAZA.
18	PROVIDE (2) 1" CONDUITS, WITH PULL-STRINGS, ROUTED ABOVE CEILING FROM MECH/ELEC 132 TO 5' OUTSIDE OF BUILDING FOOTER EAST OF 'RECEPTION 102'. CONDUIT SHALL BE STUBBED UP OUTSIDE AND CAPPED FOR FUTURE SIGN AND LIGHTS.

GENERAL NOTES	
1.	COORDINATE EXACT LOCATIONS OF DEVICES SHOWN WITH OTHER EQUIPMENT. COORDINATE EXACT LOCATION OF CEILING MOUNTED DEVICES WITH LIGHTS, HVAC EQUIPMENT, AND OTHER DEVICES.
2.	COORDINATE WITH MECHANICAL CONTRACTOR AND PROVIDE ALL RELAYS, CONNECTIONS, AND ALL DEVICES NECESSARY TO INTERLOCK EXHAUST FANS, DAMPERS, ETC WITH PROPER CONTROL DEVICES.
3.	COORDINATE EXACT LOCATION OF MECHANICAL EQUIPMENT WITH MECHANICAL CONTRACTOR. REFER TO MECHANICAL PLANS AND MANUFACTURER FOR ADDITIONAL INFORMATION.
4.	COORDINATE EXACT LOCATION OF PLUMBING EQUIPMENT WITH PLUMBING CONTRACTOR. REFER TO PLUMBING PLANS AND MANUFACTURER FOR ADDITIONAL INFORMATION.
5.	COORDINATE THE EXACT REQUIREMENTS OF ALL POWER CONNECTION FIXTURES AND DEVICES WITH THE ARCHITECT, OWNER AND MANUFACTURER PRIOR TO ROUGH-IN.
6.	ALL RECEPTACLES LOCATED AT COUNTERTOP HEIGHT SHALL BE ORIENTED HORIZONTALLY.
7.	FIRE STOP ALL PENETRATIONS IN FIRE AND SMOKE RATED WALLS. REFER TO ARCHITECTURAL PLANS FOR LOCATIONS AND ADDITIONAL INFORMATION.

SAFEROOM GENERAL NOTES	
PER ICC 500-2014, 309.1:	
PENETRATIONS THROUGH THE STORM SHELTER ENVELOPE THAT ARE LARGER THAN:	
1.	3.5" SQUARE INCHES IN AREA FOR RECTANGULAR OPENINGS, OR
2.	2. 2 1/16" IN DIAMETER
SHALL BE CONSIDERED AN OPENING AND SHALL BE PROVIDED WITH AN OPENING PROTECTIVE DEVICE (SHROUD). REFERENCE STRUCTURAL DRAWINGS FOR A SAMPLE SHROUD DETAIL. THIS INCLUDES PENETRATIONS FOR BUNDLES OF CONDUIT.	



**1 ELECTRICAL POWER PLAN - FIRST FLOOR**  
Scale: 1/8" = 1'-0"

**Salas O'Brien**  
Oklahoma City  
2900 S. Telephone Road, suite 120  
Moore, OK 73160  
CAF: 7058 Expiration Date: 06/30/27  
Salas O'Brien Project Number: 2550-01554-00



DWG  
drawn by  
TVO  
checked by  
FEBRUARY 2026  
date

REVISIONS

Δ	DESCRIPTION	DATE
1	ADD 02	04/13/2026
2	ADD 04	04/22/2026



OLD SCHOOL  
REPLACEMENT

sheet no:  
**E202**

OWNERSHIP USE OF DOCUMENTS:  
AGP EXPRESSLY RESERVES ITS  
COPYRIGHT AND OTHER PROPERTY  
RIGHTS OF ALL PLANS AND DRAWINGS  
DESIGNED AND/OR PRODUCED. PLANS  
AND DRAWINGS ARE NOT TO BE  
REPRODUCED IN ANY FORM OR MANNER  
WITHOUT THE EXPRESSED WRITTEN  
CONSENT OF AGP.

**KEYED NOTES**

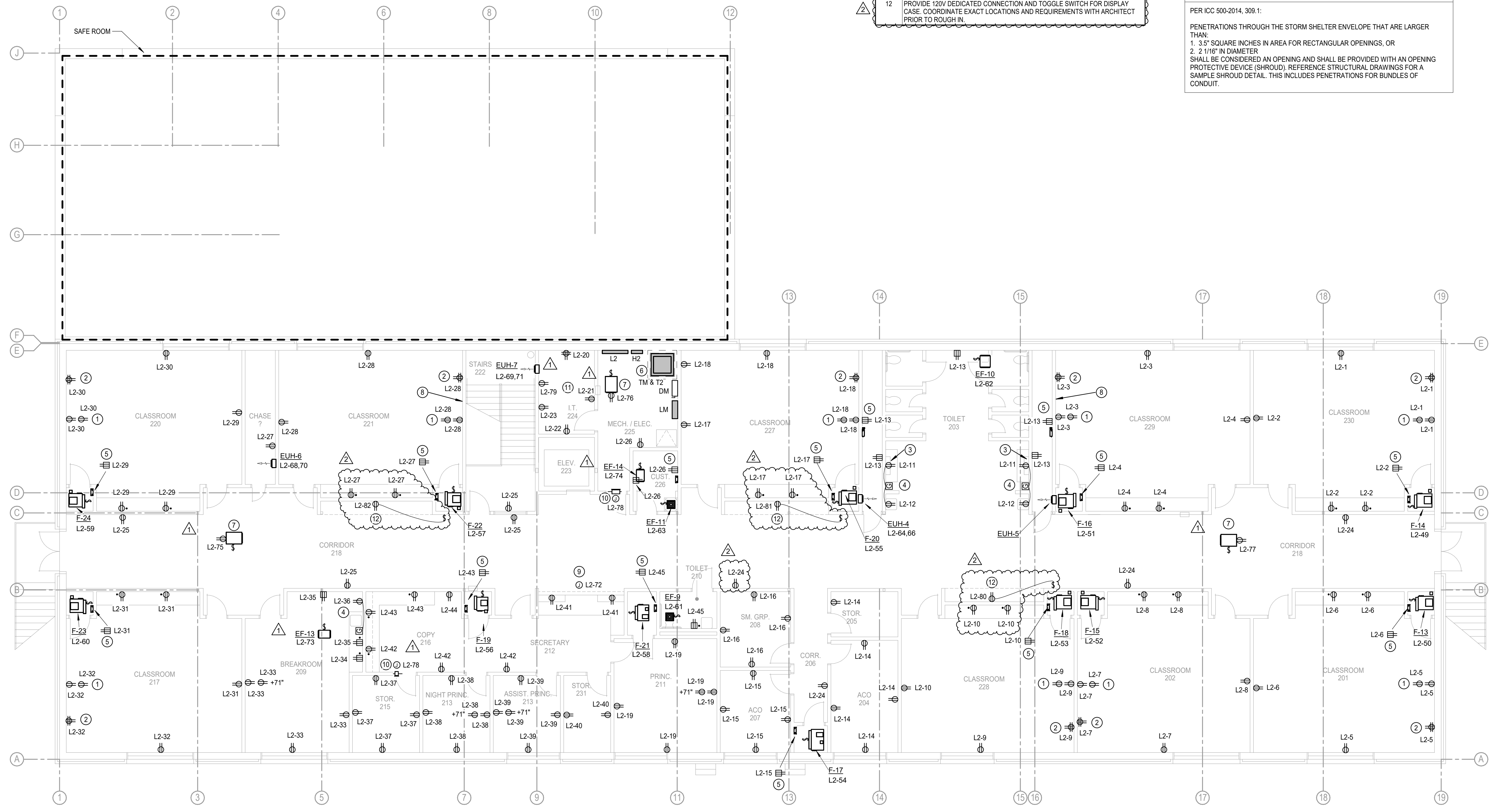
- 1 PROVIDE 120V CONNECTION FOR SMARTBOARD. COORDINATE FINAL LOCATION AND REQUIREMENTS WITH THE OWNER/ARCHITECT PRIOR TO ROUGH-IN. REFER TO DETAIL 'E5021' FOR ADDITIONAL INFORMATION.
- 2 APPROXIMATE LOCATION OF TEACHERS DESK. COORDINATE FINAL LOCATION AND REQUIREMENTS WITH THE OWNER/ARCHITECT PRIOR TO ROUGH-IN. REFER TO DETAIL 'E5021' FOR ADDITIONAL INFORMATION.
- 3 PROVIDE 120V CONNECTION FOR LAVATORY. COORDINATE EXACT LOCATION AND CONNECTION REQUIREMENTS WITH THE ARCHITECT AND PLUMBING CONTRACTOR PRIOR TO ROUGH-IN.
- 4 HOMERUN RECEPTACLE CIRCUIT THROUGH NEARBY GFCI BLANK FACE DEVICE. PROVIDE PROPER NUMBER OF GANG BOXES AND GFCI BLANK FACE DEVICES AS INDICATED BY NUMBER OF CIRCUITS BEING PROTECTED IN AREA.
- 5 PROVIDE 120V CONNECTION FOR TRAP PRIMER. COORDINATE FINAL LOCATION AND REQUIREMENTS WITH THE PLUMBING CONTRACTOR PRIOR TO ROUGH-IN.
- 6 STACKED TRANSFORMERS, REFER TO DETAIL 'E5021' FOR ADDITIONAL INFORMATION.
- 7 MINI SPLIT INDOOR UNIT TO BE POWERED FROM OUTDOOR UNIT. PROVIDE ADDITIONAL 120V CIRCUIT FOR CONDENSATE PUMP AS INDICATED. COORDINATE EXACT REQUIREMENTS WITH THE MECHANICAL CONTRACTOR ON SITE.
- 8 STRUCTURAL X-BRACING TO BE LOCATED BEHIND THIS WALL. COORDINATE CONDUIT ROUTING WITH THE ARCHITECT, STRUCTURAL, AND THE GC PRIOR TO ROUGH IN.
- 9 PROVIDE DEDICATED 120V CONNECTION FOR OVERHEAD COILING DOOR. COORDINATE EXACT LOCATION AND REQUIREMENTS WITH DOOR MANUFACTURER AND ARCHITECT PRIOR TO ROUGH-IN.
- 10 PROVIDE 120V CONNECTION FOR SMOKE DAMPER. COORDINATE EXACT LOCATION AND REQUIREMENTS WITH THE MECHANICAL CONTRACTOR ON SITE.
- 11 REFER TO TECHNOLOGY DRAWINGS FOR INSTALLATION REQUIREMENTS OF ALL ELECTRICAL EQUIPMENT WITHIN THIS ROOM. EXACT LOCATIONS AND MOUNTING HEIGHTS TO BE COORDINATED WITH OWNER AND TECHNOLOGY CONTRACTOR PRIOR TO ROUGH-IN.
- 12 PROVIDE 120V DEDICATED CONNECTION AND TOGGLE SWITCH FOR DISPLAY CASE. COORDINATE EXACT LOCATIONS AND REQUIREMENTS WITH ARCHITECT PRIOR TO ROUGH IN.

**GENERAL NOTES**

1. COORDINATE EXACT LOCATIONS OF DEVICES SHOWN WITH OTHER EQUIPMENT. COORDINATE EXACT LOCATION OF CEILING MOUNTED DEVICES WITH LIGHTS, HVAC EQUIPMENT, AND OTHER DEVICES.
2. COORDINATE WITH MECHANICAL CONTRACTOR AND PROVIDE ALL RELAYS, CONNECTIONS, AND ALL DEVICES NECESSARY TO INTERLOCK EXHAUST FANS, DAMPERS, ETC WITH PROPER CONTROL DEVICES.
3. COORDINATE EXACT LOCATION OF MECHANICAL EQUIPMENT WITH MECHANICAL CONTRACTOR. REFER TO MECHANICAL PLANS AND MANUFACTURER FOR ADDITIONAL INFORMATION.
4. COORDINATE EXACT LOCATION OF PLUMBING EQUIPMENT WITH PLUMBING CONTRACTOR. REFER TO PLUMBING PLANS AND MANUFACTURER FOR ADDITIONAL INFORMATION.
5. COORDINATE THE EXACT REQUIREMENTS OF ALL POWER CONNECTION FIXTURES AND DEVICES WITH THE ARCHITECT, OWNER AND MANUFACTURER PRIOR TO ROUGH-IN.
6. ALL RECEPTACLES LOCATED AT COUNTERTOP HEIGHT SHALL BE ORIENTED HORIZONTALLY.
7. FIRE STOP ALL PENETRATIONS IN FIRE AND SMOKE RATED WALLS. REFER TO ARCHITECTURAL PLANS FOR LOCATIONS AND ADDITIONAL INFORMATION

**SAFEROOM GENERAL NOTES**

PER ICC 500-2014, 309.1:  
PENETRATIONS THROUGH THE STORM SHELTER ENVELOPE THAT ARE LARGER THAN:  
1. 3.5" SQUARE INCHES IN AREA FOR RECTANGULAR OPENINGS, OR  
2. 2.118" IN DIAMETER  
SHALL BE CONSIDERED AN OPENING AND SHALL BE PROVIDED WITH AN OPENING PROTECTIVE DEVICE (SHROUD). REFERENCE STRUCTURAL DRAWINGS FOR A SAMPLE SHROUD DETAIL. THIS INCLUDES PENETRATIONS FOR BUNDLES OF CONDUIT.



**1 ELECTRICAL POWER PLAN - SECOND FLOOR**  
Scale: 1/8" = 1'-0"

**Salas O'Brien**  
Oklahoma City  
2900 S. Telephone Road, suite 120  
Moore, OK 73160  
CA# 7058 Expiration Date: 06/30/27  
Salas O'Brien Project Number: 2550-01554-00

Branch Panel: L1												
Location: MECH. / ELEC. 131				Volts: 120/208 Wye				A.I.C. Rating: 10,000				
Supply From: T1				Phases: 3				Enclosure: Type 1				
Mounting: Surface				Wires: 4				Mains: 225A MCB				
Phase in kVA												
Note	CKT	Circuit Description	Wire	Breaker	A	B	C	Breaker	Wire	Circuit Description	CKT	Note
	1	RM 135 RECEPTACLES	#12	20	1	0.5 / 0.9		1	20	#12	RM 135 RECEPTACLES	2
	3	RM 134 RECEPTACLES	#12	20	1	0.5 / 0.9		1	20	#12	RM 134 RECEPTACLES	4
	5	RM 139, 140, 141 RECEPTACLES, TRAP PRIMER	#12	20	1		0.6 / 1.1	1	20	#12	RM 142 RECEPTACLES	6
	7	RM 138 RECEPTACLES	#12	20	1	0.5 / 0.9		1	20	#12	RM 138 RECEPTACLES	8
	9	RR 144 LAVATORIES	#12	20	1	0.4 / 0.6		1	20	#12	RR 144 RECEPTACLE, TRAP PRIMERS, P-CHASE RECEPTS	10
	11	RM 136, 143 RECEPTACLES	#12	20	1	0.7 / 0.2		1	20	#12	RM 133 METAL DETECTOR	12
	13	RM 145 RECEPTACLES	#12	20	1	0.7 / 0.7		1	20	#12	RM 145 RECEPTACLES	14
	15	RM 132 RECEPTACLES, TRAP PRIMER	#12	20	1	0.2 / 0.9		1	20	#12	RM 132 RECEPTACLES	16
	17	RM 102 RECEPTACLES	#12	20	1	0.7 / 0.4		1	20	#12	RM 102 RECEPTACLES	18
	19	RM 103 RECEPTACLES	#12	20	1	0.9 / 0.4		1	20	#12	RM 104 RECEPTACLE, STORAGE RECEPTACLE	20
	21	RM 108 RECEPTACLES, CLOSET RECEPTACLE	#12	20	1	1.1 / 0.9		1	20	#12	RM 109 RECEPTACLES	22
	23	RM 105 RECEPTACLES, TRAP PRIMER	#12	20	1	0.8 / 1.1		1	20	#12	RM 105 RECEPTACLES, CORRIDOR 107 RECEPT	24
	25	RM 105 RECEPTACLES	#12	20	1	1.1 / 0.5		1	20	#12	RM 110 RECEPTACLES	26
	27	RM 110 RECEPTACLES	#12	20	1	0.9 / 0.5		1	20	#12	EXT RECEPTACLE, CORRIDOR 137...	28
	29	DRINKING FOUNTAIN	#12	20	1	0.5 / 0.5		1	20	#12	CORRIDOR 111, 146 RECEPTACLES	30
	31	EXT RECEPT. CORR 111, 127 RECEPTS, STAIRWELL RECEPT	#12	20	1	1.3 / 0.7		1	20	#12	EXT RECEPT. RM 101 RECEPT, CORRIDOR 111 RECEPT	32
	33	ELEVATOR CONTROL PANEL, SP-1	#12	20	1	1.4 / 0.4		1	20	#12	RM 129 RECEPTACLES	34
	35	ELEVATOR EM BATTERY	#12	20	1	0.5 / 1.0		1	20	#12	ELEVATOR CAR CONTROLS AND LIGHTS	36
	37	ELEVATOR PIT RECEPTACLE	#12	20	1	0.2 / 0.7		1	20	#12	RM 120 RECEPTACLES	38
	39	RM 117, 119 RECEPTACLES, CORRIDOR 118 RECEPTACLE	#12	20	1	0.5 / 0.5		1	20	#12	RM 121 RECEPTACLES	40
	41	DRINKING FOUNTAIN	#12	20	1	0.2 / 0.5		1	20	#12	RM 121 RECEPTACLES	42
	43	RM 123 RECEPTACLE, TRAP PRIMER	#12	20	1	0.2 / 0.4		1	20	#12	RM 125, 126 RECEPTACLES	44
	45	RM 133 RECEPTACLES	#12	20	1	0.5 / 0.5		1	20	#12	EXT RECEPT. RM 101 RECEPT, CORRIDOR 111 RECEPT	46
	47	F-02	#12	20	1	1.8 / 1.2		1	15	#12	F-01	48
	49	F-04	#12	20	1	1.8 / 1.8		1	20	#12	F-03	50
	51	F-06	#12	15	1	1.4 / 1.2		1	15	#12	F-05	52
	53	F-08	#12	15	1	1.4 / 1.2		1	15	#12	F-07	54
	55	EF-1	#12	20	1	0.3 / 1.4		1	15	#12	F-09	56
	57	EF-3	#12	20	1	0.1 / 0.0		1	20	#12	EF-2	58
	59	EF-5	#12	20	1	0.0 / 0.0		1	20	#12	EF-4	60
	61	EF-8	#12	20	1	0.1 / 0.0		1	20	#12	EF-6	62
	63	EUH-2	#12	20	2	1.5 / 1.5		2	20	#12	EUH-1	64
	65	GWH-1	#12	20	1	0.2 / 1.5		2	20	#12	EUH-3	66
	69	GWH-2	#12	20	1	0.2 / 1.5		1	20	#12	GWH-3	70
	71	CP-1	#12	20	1	0.1 / 0.2		1	20	#12	GWH-5	74
	73	GWH-4	#12	20	1	0.2 / 0.2		1	20	#12	DH	76
	75	OVERHEAD COILING DOOR	#12	20	1	1.0 / 0.2		1	20	#12	DH	76
	77	MINI SPLIT CONDENSATE PUMP	#12	20	1	0.1 / 0.1		1	20	#12	MINI SPLIT CONDENSATE PUMP	78
	79	MINI SPLIT CONDENSATE PUMP	#12	20	1	0.1 / 0.1		1	20	#12	MINI SPLIT CONDENSATE PUMP	80
	81	SMOKE DAMPERS	#12	20	1	0.2 / 0.2		1	20	#12	DISPLAY CASE	84
	83											86
	85											88
	87											90
	89											92
	91											94
	93											96
	95											98
	97											100
	99											102
	101											104
	103											106
	105											108
	107											
	108											
<b>Total Load:</b>					18.5 kVA	19.9 kVA	18.0 kVA					
<b>Total Amps:</b>					155 A	167 A	150 A					
Load Classification												
		Connected Load	Demand Factor	Estimated Demand	Panel Totals							
HVAC		15.1 kVA	100.00%	15.1 kVA	<b>Total Conn. Load:</b> 56.5 kVA							
Heating		9.0 kVA	100.00%	9.0 kVA	<b>Total Est. Demand:</b> 46.8 kVA							
Miscellaneous		2.8 kVA	100.00%	2.8 kVA	<b>Total Conn. Current:</b> 157 A							
Other		0.2 kVA	100.00%	0.2 kVA	<b>Total Est. Demand Current:</b> 130 A							
Receptacles		29.4 kVA	67.03%	19.7 kVA								
<b>Notes:</b>												
<b>Abbreviations:</b>												
G - PROVIDE GFCI CIRCUIT BREAKER												
LF - PROVIDE PERMANENT LOCK-OFF DEVICE												
LO - PROVIDE PERMANENT LOCK-ON DEVICE												
M - PROVIDE METERING DEVICE												

Branch Panel: MDP													
Location: MECH. / ELEC 131				Volts: 277/480 Wye				A.I.C. Rating: 42,000					
Supply From: UTILITY				Phases: 3				Enclosure: Type 1					
Mounting: Surface				Wires: 4				Mains: 800A MLO					
Phase in kVA													
Note	CKT	Circuit Description	Wire	Breaker	A	B	C	Breaker	Wire	Circuit Description	CKT	Note	
	1				12.5 / 4.2							2	
	3	COMBI-OVEN	#4	60	3	12.5 / 4.2		3	15	#12	REFRIGERATION SYSTEM	4	
	5						12.5 / 4.2					6	
	7	SHUNT TRIP	--	--	1	0.0 / 11.1						8	
	9						6.9 / 11.1		3	50	#6	ELEVATOR (SHUNT TRIP)	10
	11	DISHWASHER	#8	35	3	6.9 / 15.9		6.9 / 11.1				12	
	13						18.5 / 13.1					14	
	15						19.9 / 12.0		3	125	#1	TK	16
	17	T1	#1	125	3							18	
	19				18.0 / 49.7		8.1 / 41.8					20	
	21						8.1 / 44.5		3	350	#4/0	TM	22
	23	DOAS-1	#8	40	3	8.1 / 5.2		23.3 / 6.6				24	
	25								3	125	#1	H1	26
	27											28	
	29	H2	#4/0	225	3	20.4 / 15.2		23.3 / 6.7				30	
	31						0.0 / 15.2		3	70	#4	CU-10	32
	33											34	
	35											36	
	37											38	
	39											40	
	41											42	
	43											44	
	45											46	
	47											48	
	49											50	
	51											52	
	53											54	
	55											56	
	57											58	
	59											60	
<b>Total Load:</b>					167.2 kVA	161.3 kVA	164.4 kVA						
<b>Total Amps:</b>					605 A	582 A	595 A						
Load Classification													
		Connected Load	Demand Factor	Estimated Demand	Panel Totals								
Cooling		142.5 kVA	100.00%	142.5 kVA	<b>Total Conn. Load:</b> 492.9 kVA								
HVAC		111.7 kVA	100.00%	111.7 kVA	<b>Total Est. Demand:</b> 461.6 kVA								
Heating		21.0 kVA	100.00%	21.0 kVA	<b>Total Conn. Current:</b> 593 A								
Lighting		11.4 kVA	125.00%	14.2 kVA	<b>Total Est. Demand Current:</b> 555 A								
Miscellaneous		127.8 kVA	100.00%	127.8 kVA									
Other		0.2 kVA	100.00%	0.2 kVA									
Receptacles		78.3 kVA	56.38%	44.2 kVA									
<b>Notes:</b>													
<b>Abbreviations:</b>													
G - PROVIDE GFCI CIRCUIT BREAKER													
LF - PROVIDE PERMANENT LOCK-OFF DEVICE													
LO - PROVIDE PERMANENT LOCK-ON DEVICE													
M - PROVIDE METERING DEVICE													

Branch Panel: H1													
Location: MECH. / ELEC. 131				Volts: 277/480 Wye				A.I.C. Rating: 30,000					
Supply From: MDP				Phases: 3				Enclosure: Type 1					
Mounting: Surface				Wires: 4				Mains: 125A MLO					
Phase in kVA													
Note	CKT	Circuit Description	Wire	Breaker	A	B	C	Breaker	Wire	Circuit Description	CKT	Note	
	1	EXTERIOR LIGHTING	#10	20	1	0.3 / 1.1		1	20	#10	EXTERIOR LIGHTING	2	
	3	LIGHTING	#12	20	1		1.5 / 1.3		1	20	#12	LIGHTING	4
	5	LIGHTING	#12	20	1			1.9 / 0.9	1	20	#12	LIGHTING	6
	7				3.9 / 0.0							8	
	9	F-10	#12	20	3		3.9 / 0.0					10	
	11						3.9 / 0.0					12	
	13											14	
	15											16	
	17											18	
	19											20	
<b>Total Load:</b>					5.2 kVA	6.6 kVA	6.7 kVA						
<b>Total Amps:</b>					19 A	25 A	25 A						
Load Classification													
		Connected Load	Demand Factor	Estimated Demand	Panel Totals								
HVAC		11.6 kVA	100.00%	11.6 kVA	<b>Total Conn. Load:</b> 18.6 kVA								
Lighting		6.9 kVA	125.00%	8.6 kVA	<b>Total Est. Demand:</b> 20.3 kVA								
					<b>Total Conn. Current:</b> 22 A								
					<b>Total Est. Demand Current:</b> 24 A								
<b>Notes:</b>													
<b>Abbreviations:</b>													
G - PROVIDE GFCI CIRCUIT BREAKER													
LF - PROVIDE PERMANENT LOCK-OFF DEVICE													
LO - PROVIDE PERMANENT LOCK-ON DEVICE													
M - PROVIDE METERING DEVICE													

**AGP**  
the Abila Griffin  
Partnership L.L.C.

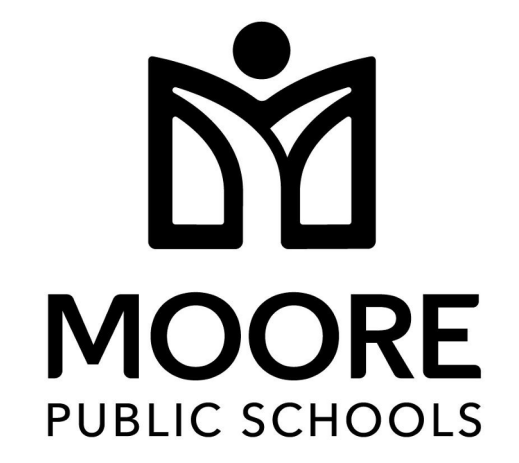
313 S. E. 5th Street  
MOORE, OK. 73160  
405.735.3477  
AGP@theAGP.net  
www.theAGP.net

CEDAR CREEK  
CIVIL  
KFC ENGINEERING  
STRUCTURAL  
SALAS O'BRIEN  
MECHANICAL / ELECTRICAL



DWG  
drawn by  
TVO  
checked by  
FEBRUARY 2026  
date

Δ	DESCRIPTION	DATE
1	ADD 02	04/13/2026
2	ADD 04	04/22/2026



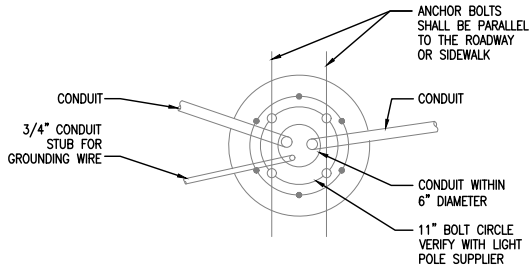
OLD SCHOOL  
REPLACEMENT

sheet no:  
**E601**

**Salas O'Brien**  
Oklahoma City  
2900 S. Telephone Road, suite 120  
Moore, OK 73160  
CA# 7058 Expiration Date: 06/30/27  
Salas O'Brien Project Number: 2550-01554-00

OWNERSHIP USE OF DOCUMENTS:  
AGP EXPRESSLY RESERVES ITS  
COPYRIGHT AND OTHER PROPERTY  
RIGHTS OF ALL PLANS AND DRAWINGS  
DESIGNED

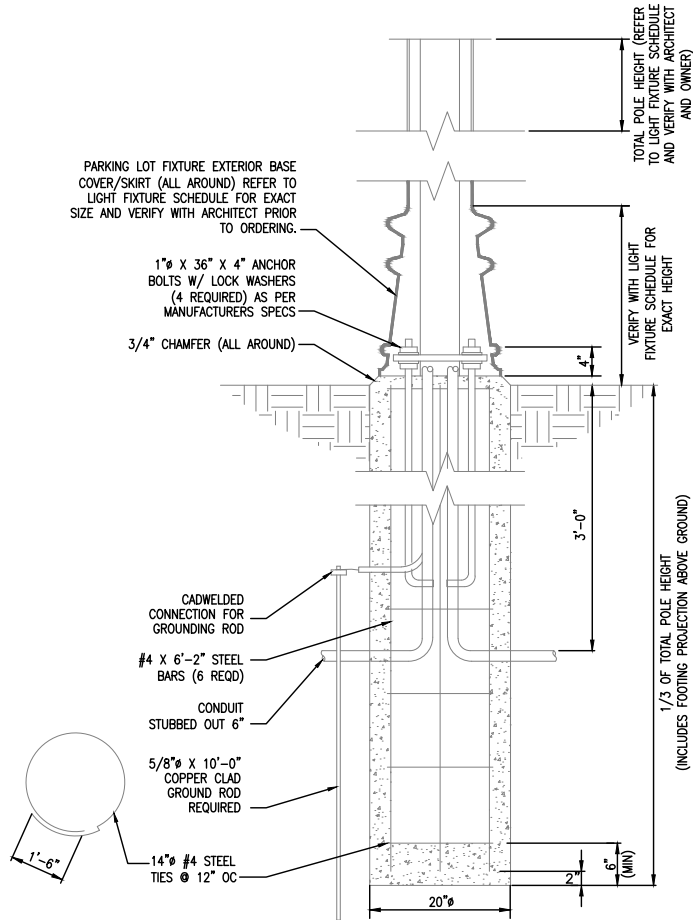




PARKING LOT FIXTURE EXTERIOR BASE COVER/SKIRT (ALL AROUND) REFER TO LIGHT FIXTURE SCHEDULE FOR EXACT SIZE AND VERIFY WITH ARCHITECT PRIOR TO ORDERING.

1" x 36" x 4" ANCHOR BOLTS W/ LOCK WASHERS (4 REQUIRED) AS PER MANUFACTURERS SPECS

3/4" CHAMFER (ALL AROUND)



**1** POLE BASE DETAIL - FLUSH WITH COVER  
NO SCALE

**Salas O'Brien**

Oklahoma City  
2900 S. Telephone Road, suite 120  
Moore, OK 73160  
CA#: 7058 Expiration Date: 06/30/27  
Salas O'Brien Project Number: 2550-01554-00

REVISIONS		
Δ	DESCRIPTION	DATE
1	ADDENDUM 04	04/22/2026

SEAL  
(STRUCTURAL)

SCOTT R. ARMSTRONG  
21506  
OKLAHOMA  
4/22/26

SEAL  
(ELECTRICAL)

TIMOTHY A. OSTRAN  
30650  
OKLAHOMA  
04/22/26

PROJECT:  
MPS OLD SCHOOL UPGRADES  
201 N BROADWAY AVE, MOORE, OK 73160

SHEET TITLE:  
ELECTRICAL POLE BASE - FLUSH WITH COVER DETAIL

ARCHITECT:  
AGP  
313 S. E. 5TH STREET,  
MOORE, OK, 73160

ISSUE DATE:  
04/22/26

SHEET:  
**E1**

**DIVISION 10 - SPECIALTIES**

**SECTION 10420 - LETTERS AND PLAQUES - ADDENDUM NO. 4**

**Part 1 General**

1.01 Work Included:

- A. All materials, labor, services, and incidentals necessary for the completion of this entire section of the work.

1.02 Submittals:

- A. Shop Drawings: Indicate details and dimensions of fabrication and installation including layouts and assemblies. Begin fabrication only after receiving approved shop Drawings.
- B. Manufacturer's Literature: Descriptive literature and installation instructions.

1.03 Product Delivery, Storage, and Handling:

- A. Handle and store all items with care to prevent damage and injury to finish surfaces.

**Part 2 - Products**

2.01 Cast Metal Plaque at interior location:

- A. Castings shall be free from pits, scale, sand holes, or other defects. Comply with requirements specified for metal, border style, background texture, and finish, and with requirements shown for thickness, size, shape, and copy. Hand-tool and buff borders and raised copy to produce the manufacturer's standard satin polished finish. Coordinate final design and location with Architect.
  - 1. Metal: aluminum.
  - 2. Border Style: Type 504.
  - 3. Background Texture: manufacturer's standard No. 2 black pebble texture.
  - 4. Letter Style: Helvetica upper case - raised satin aluminum finish.
  - 5. Mounting Method: No. 4 concealed fasteners.
  - 6. Finish: manufacturer's satin aluminum finish.
  - 7. Size: 20 inches x 24 inches.
  - 8. Content:

2026 OLD SCHOOL REPLACEMENT  
MOORE PUBLIC SCHOOLS

SUPERINTENDENT OF SCHOOLS:  
DR. ROBERT ROMINES

**DIVISION 10 - SPECIALTIES**

**SECTION 10420 - LETTERS AND PLAQUES - ADDENDUM NO. 4**

**BOARD OF EDUCATION:**

STACI PRUETT	PRESIDENT
MANDY KINCANNON	VICE PRESIDENT
MATT PURSER	MEMBER
ERIN MORRISON	MEMBER
JENNY NGUYEN-STATLER	MEMBER

**BOND CONSULTANT:**

JEFF HORN

**ARCHITECT:**

AGP – THE ABLA GRIFFIN PARTNERSHIP LLC  
MOORE, OKLAHOMA

**CONTRACTOR:**

OMNI CONSTRUCTION LLC  
MOORE, OKLAHOMA

9. Type Example: ARK-Ramos Manufacturing Company, Inc.

**Part 3 - Execution**

3.01 Installation:

- A. Install units plumb and level in locations indicated on the Drawings, following manufacturer's recommendations.
- B. Provide all necessary accessories: Items to support or attach metal letters to result in a complete installation.
- C. Protect all finishes to prevent damage before, during and after installation.

**End of Section**