

**GENERAL NOTES**

- COORDINATE EXACT LOCATIONS OF DEVICES SHOWN WITH OTHER EQUIPMENT. COORDINATE EXACT LOCATIONS OF CEILING MOUNTED DEVICES WITH LIGHTS, HVAC EQUIPMENT, AND OTHER DEVICES.
- COORDINATE WITH MC AND PROVIDE ALL RELAYS, CONNECTIONS, AND ALL DEVICES NECESSARY TO INTERLOCK EXHAUST FANS, DAMPERS, ETC WITH PROPER CONTROL DEVICES.
- COORDINATE EXACT LOCATIONS OF MECHANICAL EQUIPMENT WITH MECHANICAL CONTRACTOR.
- COORDINATE EXACT LOCATIONS OF PLUMBING EQUIPMENT WITH PLUMBING CONTRACTOR.

**KEYED NOTES**

○ PROVIDE 120V DEDICATED CONNECTION FOR COPIER/PRINTER.  
○ COORDINATE FINAL LOCATION AND REQUIREMENTS WITH ARCHITECT/OWNER PRIOR TO ROUGH-IN.

KFC ENGINEERING  
STRUCTURAL

SALAS O'BRIEN  
MECHANICAL / ELECTRICAL



DW  
drawn by  
TVO  
checked by  
APRIL 2023  
date  
revisions

MOORE PUBLIC SCHOOLS  
BOARD OF EDUCATION  
MOORE, OKLAHOMA



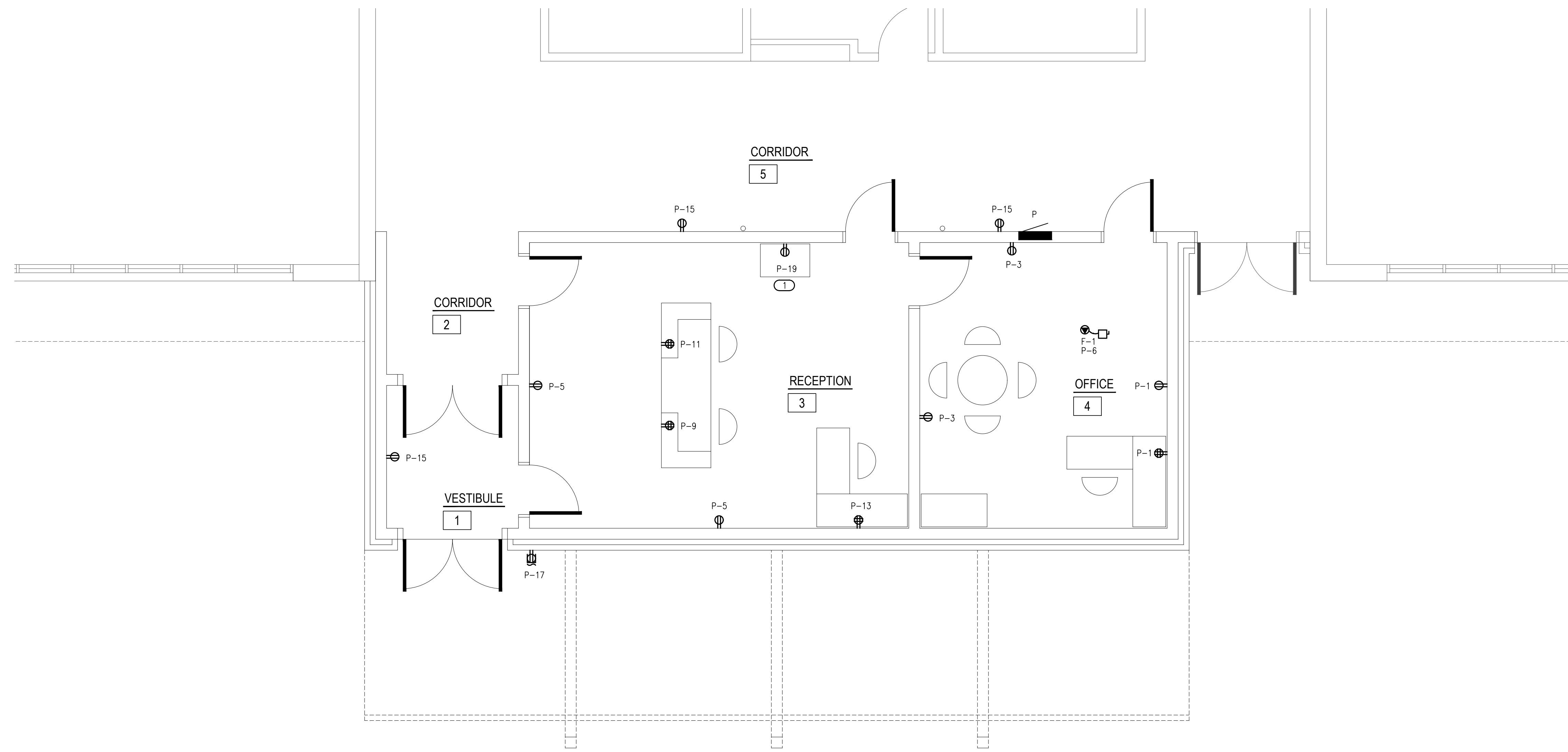
OFFICE  
ADDITION -  
NORTHMOOR  
ELEMENTARY SCHOOL

sheet no:

**E201**

**Salas O'Brien**  
2800 Van Buren St., Suite 2635  
Norman, OK 73072  
Salas O'Brien Registration: CA# 7058  
Expiration Date: 6/30/2023  
Salas O'Brien Project Number: 2023-01177-00

OWNERSHIP USE OF DOCUMENTS:  
AGP EXPRESSLY RESERVES ITS  
COPYRIGHT AND OTHER PROPERTY  
RIGHTS OF ALL PLANS AND DRAWINGS  
DESIGNED AND/OR PRODUCED. PLANS  
AND DRAWINGS ARE NOT TO BE  
REPRODUCED IN ANY FORM OR MANNER  
WITHOUT THE EXPRESSED WRITTEN  
CONSENT OF AGP.



**1 ELECTRICAL POWER PLAN - FLOOR**  
SCALE: 1/4" = 1'-0"

