



DW

drawn by

TVO

checked by

APRIL 2023

date

revisions

MOORE PUBLIC SCHOOLS
BOARD OF EDUCATION
MOORE, OKLAHOMA



OFFICE
ADDITION -
NORTHMOOR
ELEMENTARY SCHOOL

sheet no:

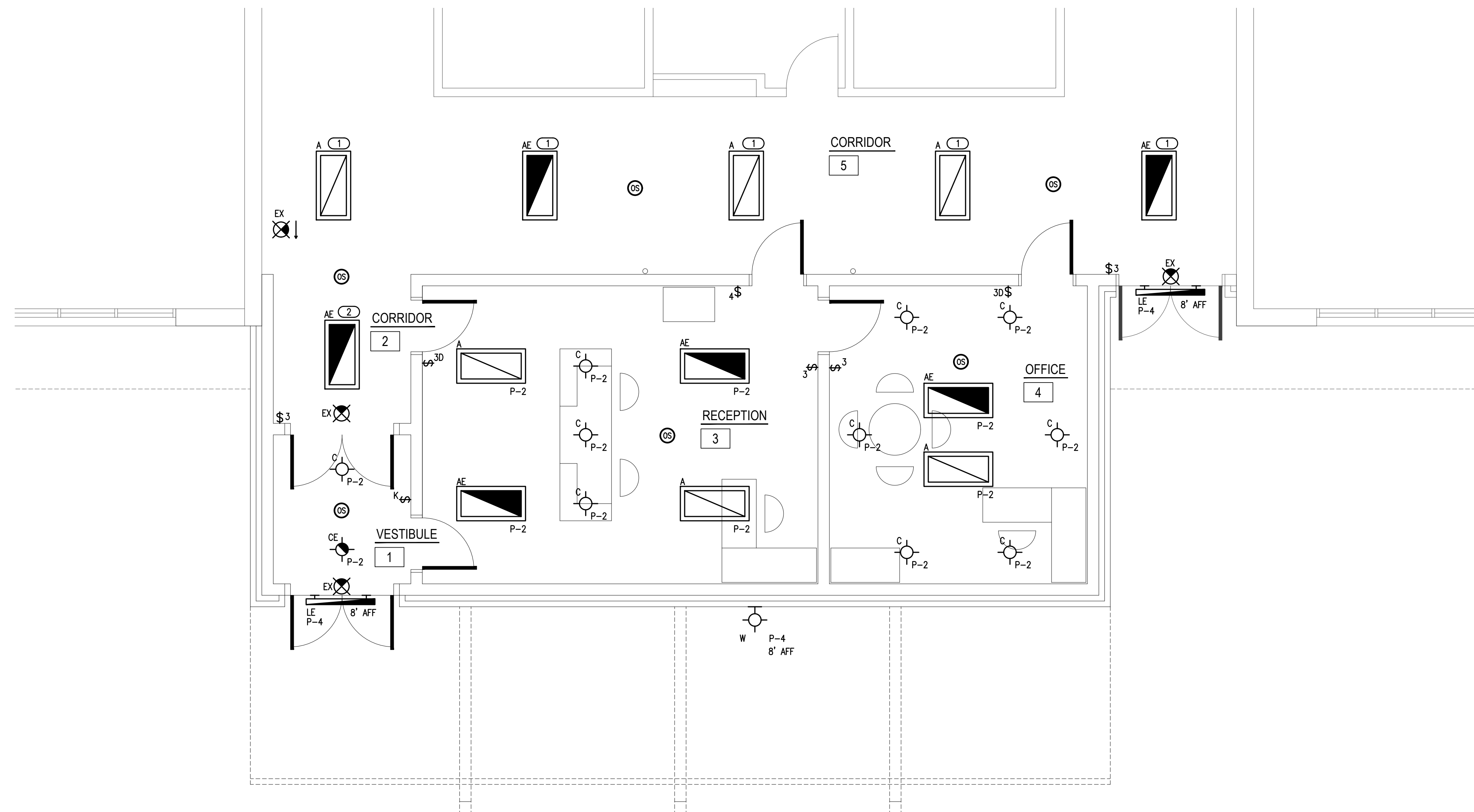
E101

GENERAL NOTES

- OCCUPANCY SENSOR LOCATIONS ARE FOR DESIGN INTENT ONLY. LOCATE OCCUPANCY SENSORS PER MANUFACTURER'S WRITTEN INSTALLATION INSTRUCTIONS.
- COORDINATE EXACT LOCATIONS AND MOUNTING HEIGHTS OF LIGHT FIXTURES WITH HVAC EQUIPMENT AND OTHER DEVICES/EQUIPMENT.
- COORDINATE LIGHT SWITCHES WITH THERMOSTATS AND OTHER WALL MOUNTED DEVICES.
- COORDINATE EXTERIOR FIXTURE MOUNTING HEIGHT WITH ARCHITECT AND OWNER PRIOR TO ROUGH IN.
- NEW EXTERIOR LIGHTING SHALL BE CONTROLLED BY NEAREST EXISTING EXTERIOR LIGHTING SYSTEM VIA RELAY/CONTACTOR.

KEYED NOTES

- EXISTING FIXTURES SHALL BE REMOVED AND REPLACED AS SHOWN. EXISTING CIRCUITS AND CONTROLS SHALL REMAIN.
- NEW LIGHT FIXTURE SHALL BE POWERED AND CONTROLLED FROM EXISTING CORRIDOR LIGHTING. EC SHALL PROVIDE ALL WIRING, CONDUITS, AND DEVICES NECESSARY FOR NEW LIGHT FIXTURE CONNECTIONS.



1 ELECTRICITY LIGHTING PLAN - FLOOR PLAN

SCALE: 1/4" = 1'-0"



2800 Van Buren St., Suite 2635
Norman, OK 73072
Salas O'Brien Registration: CA# 7058
Expiration Date: 6/30/2023
Salas O'Brien Project Number: 2023-01177-00

OWNERSHIP USE OF DOCUMENTS:
AGP EXPRESSLY RESERVES ITS
COPYRIGHT AND OTHER PROPERTY
RIGHTS OF ALL PLANS AND DRAWINGS
DESIGNED AND/OR PRODUCED. PLANS
AND DRAWINGS ARE NOT TO BE
REPRODUCED IN ANY FORM OR MANNER
WITHOUT THE EXPRESSED WRITTEN
CONSENT OF AGP.