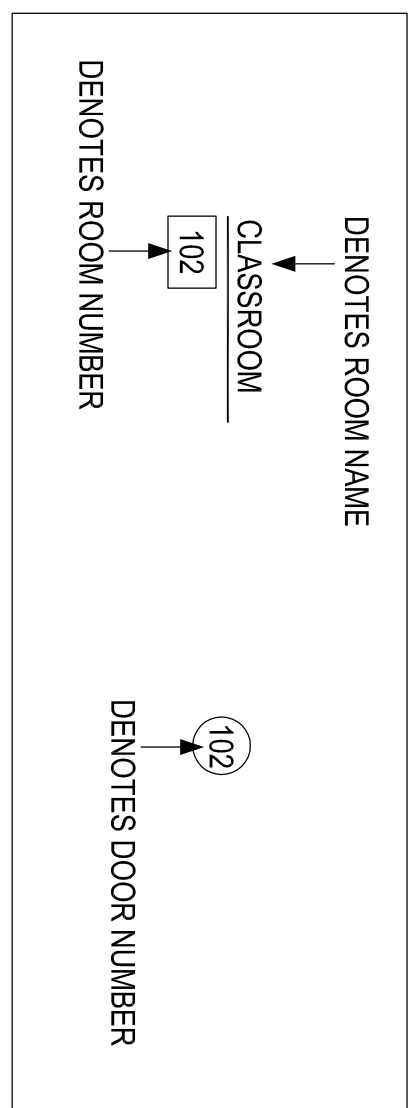
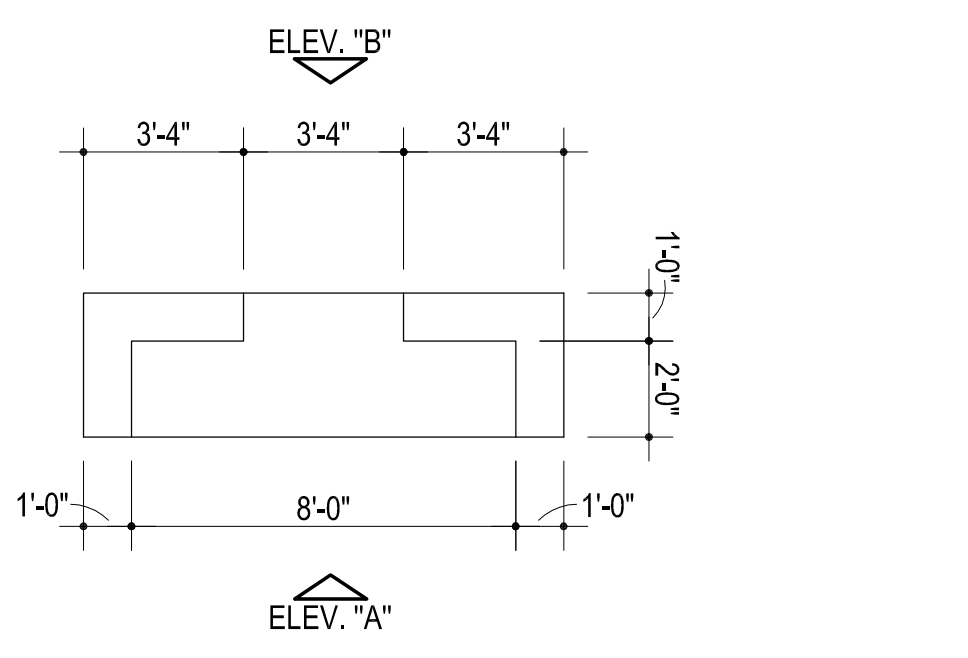


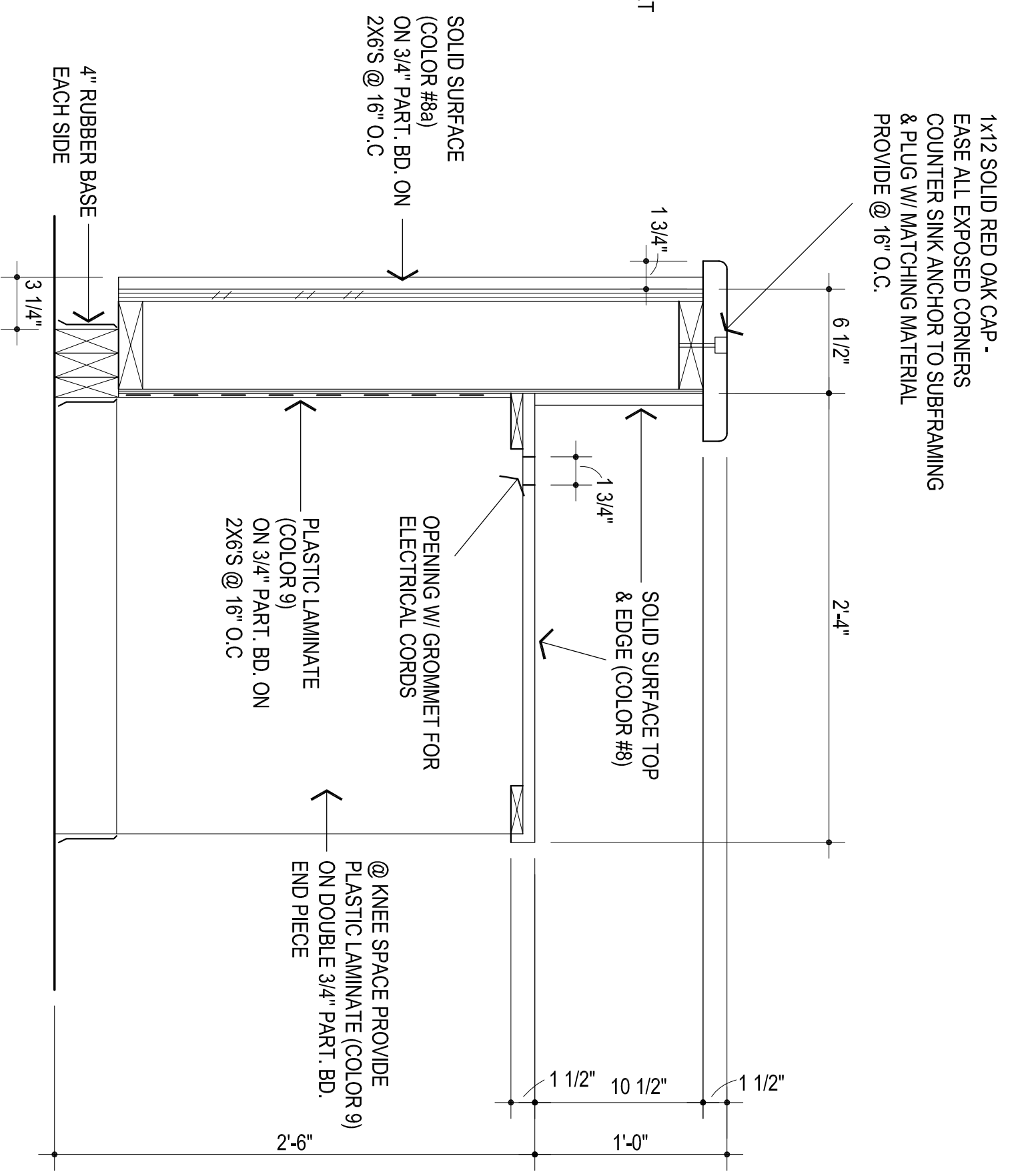
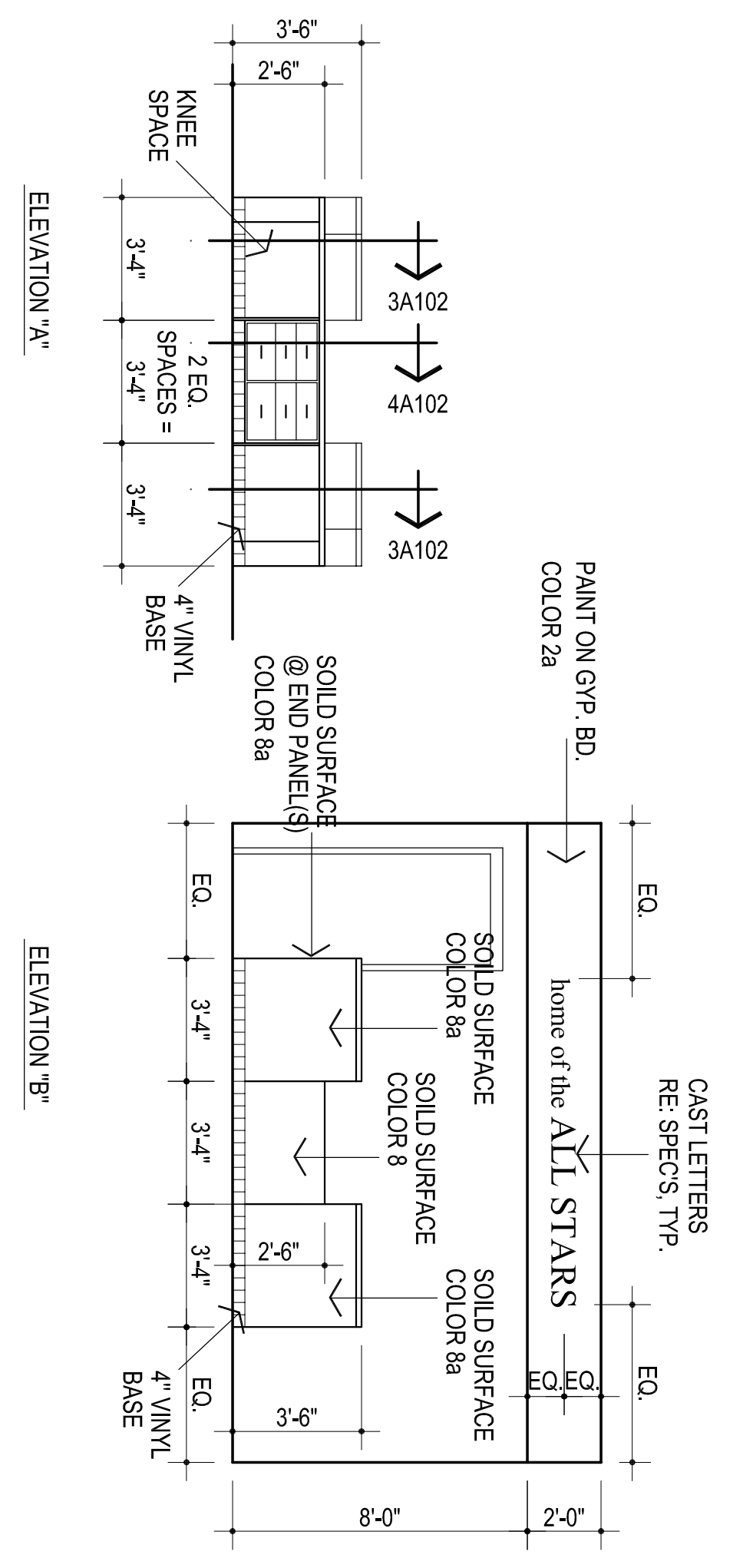
**1 FLOOR PLAN**  
1/8" = 1'-0"  
963 sq. ft.



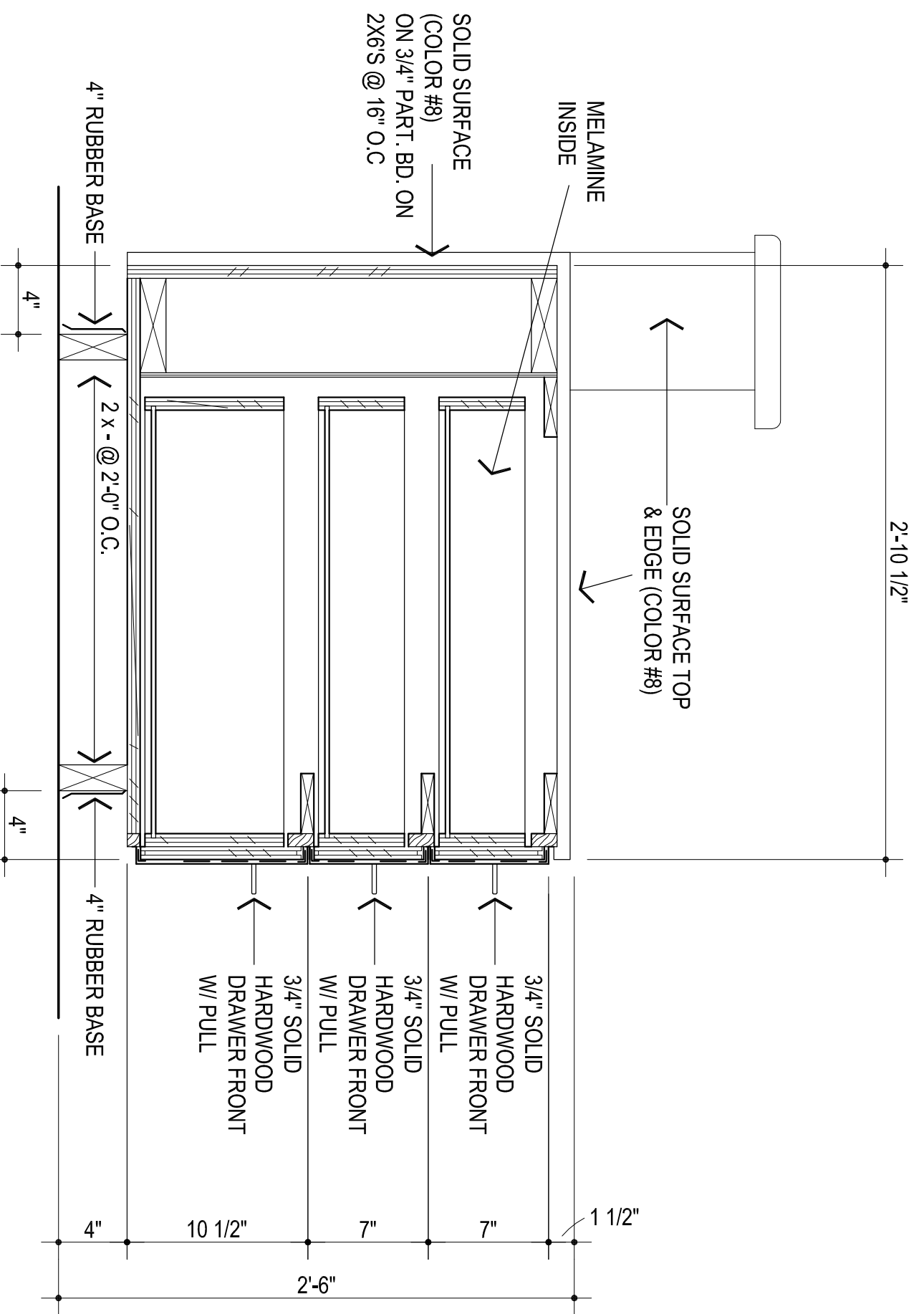
- MISCELLANEOUS NOTES:
1. F.E.C. - FIRE EXTINGUISHER AND CABINET
  2. EXISTING COLUMNS TO REMAIN PAINT TO MATCH NEW WALLS



**2 MILLWORK ROOM #3**  
1/4" = 1'-0"



**3 SECTION @ COUNTER**  
1 1/2" = 1'-0"



**4 SECTION @ COUNTER**  
1 1/2" = 1'-0"



3/12/81/23

CG  
designed by  
MA  
checked by  
MARCOI 2/22  
08/88  
revisions

MOORE PUBLIC SCHOOLS  
BOARD OF EDUCATION  
MOORE, OKLAHOMA

MOORE Public Schools  
LEARNING FOR LIFE

OFFICE  
ADDITION -  
NORTHMOOR  
ELEMENTARY SCHOOL

A102

Sheet No.

OWNERSHIP USE OF DOCUMENTS:  
AGP EXPRESSLY RESERVES ITS  
COPYRIGHT AND OTHER PROPERTY  
RIGHTS OF ALL PLANS AND DRAWINGS  
DESIGNED AND/OR PRODUCED BY AGP.  
REPRODUCTION IN ANY FORM OR MANNER  
WITHOUT THE EXPRESSED WRITTEN  
CONSENT OF AGP.