



KS

drawn by

KP

checked by

OCTOBER 2024

date

revisions

sheet no:

P000

GENERAL PLUMBING NOTES	
1.	THESE DRAWINGS SHALL NOT BE SCALED. SEE ARCHITECTURAL/CIVIL DRAWINGS FOR DIMENSIONAL INFORMATION. THIS ENGINEER WILL NOT BE LIABLE FOR MISCALCULATED PRODUCT TAKE-OFFS DUE TO SCALING OF DRAWINGS.
2.	ALL SANITARY PIPING SHALL HAVE A 1/8" PER FOOT SLOPE UNLESS OTHERWISE NOTED. 2" SANITARY OR SMALLER SHALL HAVE A 1/4" PER FOOT SLOPE.
3.	VALVES AND FITTINGS SHALL BE OF SAME SIZE AS THE LINE ON WHICH THEY ARE LOCATED, UNLESS OTHERWISE INDICATED ON DRAWINGS.
4.	CONTRACTOR SHALL COORDINATE ALL WORK WITH OTHER TRADES.
5.	CONTRACTOR SHALL FIELD VERIFY ALL GIVEN MEASUREMENTS PRIOR TO LAYING AND CONNECTING ALL SANITARY AND WASTE PIPING AND NOTIFY ENGINEER OF ANY DISCREPANCIES.
6.	CONTRACTOR SHALL BE RESPONSIBLE FOR MAINTAINING FIRE RATING AND WEATHERPROOFING INTEGRITY OF ALL PIPING AND PENETRATIONS.
7.	ALL WATER SUPPLY AND SANITARY LINES SHALL BE RUN AS CLOSE TO PLANS AS POSSIBLE WITH NO CHANGES IN SIZING.
8.	CHANGES IN THE DIRECTION OF SANITARY DRAIN PIPING SHALL NOT BE MADE WITH FITTINGS WHICH WILL CAUSE EXCESSIVE REDUCTION IN THE VELOCITY OF FLOW OR CREATE ANY OTHER ADVERSE EFFECT UNLESS PHYSICALLY IMPOSSIBLE (I.E.: USE OF SANITARY TEE IN A HORIZONTAL CONNECTION, USE OF A DOUBLE SANITARY TEE IN A VERTICAL STACK, IN GENERAL, USE OF SHORT-RADIUS FITTINGS FOR BRANCH TO HOUSE DRAIN OR STACK CONNECTION).
9.	CONTRACTOR SHALL GIVE 48 HOURS HOUR EMERGENCY LOCATE NOTICE TO APPLICABLE UTILITY COMPANY PRIOR TO PERFORMING WORK INVOLVING UTILITIES.
10.	ALL DRAINAGE PIPING SHALL BE MARKED WITH THE SEAL OF APPROVAL OF THE NATIONAL SANITATION FOUNDATION.
11.	ROUTE ALL PIPING CONCEALED ABOVE CEILINGS, WITHIN WALLS, OR IN CHASES. PIPING EXPOSED SHALL BE SLOPED AND PAINTED TO MATCH ARCHITECTURAL FINISHES. PIPING IN MECHANICAL ROOMS MAY BE EXPOSED.
12.	CONTRACTOR SHALL VERIFY INVERT ELEVATIONS OF SEWERS TO WHICH NEW SEWER LINES ARE TO BE CONNECTED BEFORE INSTALLATION OF NEW SEWER LINE.
13.	ALL VENTS THROUGH ROOF SHALL BE MIN. 10'-0" FROM ANY AIR INTAKES.
14.	CONTRACTOR SHALL INSTALL DIELECTRIC UNIONS AT CONNECTIONS OF DISSIMILAR METALS.
15.	CONTRACTOR SHALL ROUGH-IN ALL WASTES AND SUPPLIES TO SPECIAL EQUIPMENT ACCORDING TO MANUFACTURER'S SHOP DRAWINGS AND MAKE FINAL CONNECTIONS. ALL SUPPLIES SHALL BE VALVED. INSTALL VACUUM BREAKERS WHERE REQUIRED BY CODE.
16.	DO NOT PENETRATE WALL FOOTINGS WITH PIPING, COORDINATE WITH GENERAL CONTRACTOR TO DROP FOOTINGS AS REQUIRED TO CLEAR PLUMBING SERVICES WHERE ABSOLUTELY NECESSARY. ALL PIPING PENETRATING A BEARING WALL OR FOOTING MUST BE SLEEVED AND LOCATION APPROVED BY STRUCTURAL ENGINEER. PROVIDE LINK-SEALS IN ALL PENETRATIONS OF EXTERIOR WALLS.
17.	ALL PIPING SHALL BE INSTALLED AS HIGH AS POSSIBLE IN PROVIDED CEILING SPACE.
18.	COORDINATE PIPING INSTALLATION AS TO NOT INTERFERE WITH HVAC EQUIPMENT ACCESS.
19.	ANY ERRORS OR AMBIGUITIES IN THE PLANS AND/OR SPECIFICATIONS THAT ARE DISCOVERED BY THE CONTRACTOR SHALL BE REPORTED TO THE ARCHITECT/ENGINEER BEFORE WORK IS STARTED. OMISSION OF PARTICULAR REFERENCE TO ANY ITEM NECESSARY FOR COMPLETE INSTALLATION AND PROPER OPERATION THEREOF SHALL NOT RELIEVE THE CONTRACTOR OF THE RESPONSIBILITY OF FURNISHING THE SAME AT NO EXTRA COST. THE CONTRACTOR IS RESPONSIBLE FOR REVIEWING ALL CONSTRUCTION DOCUMENTS FOR INFORMATION PRIOR TO BID.
20.	VERIFY WITH ARCHITECT ON ALL EQUIPMENT AND FIXTURES REQUIRING PLUMBING PRIOR TO BID. COORDINATE EXACT LOCATIONS AND CONNECTIONS.
21.	ALL WORK SHALL BE IN COMPLIANCE WITH STATE AND LOCAL CODES.
22.	CONTRACTOR SHALL PAY ALL FEES, PERMITS, LICENSES, ETC. NECESSARY FOR PROPER COMPLETION OF WORK.
23.	INSTALL ALL EQUIPMENT IN ACCORDANCE WITH MANUFACTURER'S RECOMMENDATIONS.

PLUMBING PIPING LINETYPES	
LINETYPE	DESCRIPTION
----	DEMOLITION
-----G-----	GAS
=====	SANITARY ABOVE GRADE
-----	SANITARY BELOW GRADE
=====	STORM ABOVE GRADE
-----	STORM BELOW GRADE
-----	VENT ABOVE GRADE
-----	VENT BELOW GRADE
-----	COLD WATER
-----	COLD WATER BELOW GRADE
-----	HOT WATER
-----	HOT WATER BELOW GRADE
-----	RECIRC WATER
-----	RECIRC WATER BELOW GRADE

PLUMBING PIPING LEGEND	
	CIRCUIT SETTER
	BALL VALVE OR SHUT-OFF VALVE
	SPRING CHECK VALVE
	END CAP
	NEW TO EXISTING PIPE CONNECTION
	FLOW DIRECTION ARROW
	NEW TO EXISTING POINT OF CONNECTION SYMBOL
	PIPE CONNECTION
	HAMMER ARRESTOR (PISTON TYPE)
	HAMMER ARRESTOR (BELLOWS TYPE)
	PIPING LINEWEIGHT: NEW/DEMOLITION
	PIPING LINEWEIGHT: EXISTING

PLUMBING ABBREVIATIONS			
AG	ABOVE GRADE	MAU	MAKE-UP AIR UNIT
ADD	ADDENDUM	MC	MECHANICAL CONTRACTOR
ADDL	ADDITIONAL	MECH	MECHANICAL
ADJ	ADJUSTABLE	MIN	MINIMUM
AFF	ABOVE FINISH FLOOR	NG	NATURAL GAS
AFG	ABOVE FINISH GRADE	NTS	NOT TO SCALE
ALT	ALTERNATE	NPCW	NON POTABLE COLD WATER
BG	BELOW GRADE	ORD	OVERFLOW ROOF DRAIN
CO	CLEANOUT	OS	OPEN SITE
COL	COLUMN	OSD	OVERFLOW STORM DRAIN
CW	COLD WATER	PC	PLUMBING CONTRACTOR
DN	DOWN	PLBG	PLUMBING
DS	DOWNSPOUT	PRES	PRESSURE
EC	ELECTRICAL CONTRACTOR	QTY	QUANTITY
ECO	EXTERIOR CLEANOUT	RD	ROOF DRAIN
EQ	EQUAL	RTU	ROOFTOP UNIT
FCD	FLOOR CLEANOUT	SAN	SANITARY
FD	FLOOR DRAIN	SCH	SCHEDULE
FLR	FLOOR	SD	STORM DRAIN
FS	FLOOR SINK	SPEC	SPECIFICATIONS
FT	FOOT (FEET)	SS	STAINLESS STEEL
F	FURNACE	TEMP	TEMPERATURE
GAL	GALLON	TYP	TYPICAL
GC	GENERAL CONTRACTOR	UR	URINAL
GPM	GALLONS PER MINUTE	V	VENT
GI	GREASE INTERCEPTOR	VTR	VENT THRU ROOF
GW	GREASE WASTE	W/	WITH
HW	HOT WATER	WCO	WALL CLEANOUT
HWR	HOT WATER RETURN	WC	WATER CLOSET
KEC	KITCHEN EQUIPMENT CONSULTANT		

PLUMBING SHEET INDEX	
P000	PLUMBING TITLE SHEET
P001	PLUMBING SITE PLAN
P101	PLUMBING PLAN - BELOW GRADE
P110	PLUMBING PLAN - ABOVE GRADE
P201	PLUMBING ROOF PLAN
P301	PLUMBING ISOMETRICS - WASTE & VENT
P302	PLUMBING ISOMETRICS - WATER SUPPLY
P501	PLUMBING DETAILS
P502	PLUMBING DETAILS
P601	PLUMBING SCHEDULES

Salas O'Brien
2900 S. Telephone Road, Suite 120
Moore, OK 73160
Salas O'Brien Registration: CA# 7058
Expiration Date: 6/30/2025
Salas O'Brien Project Number: 2450-70304-00

- GENERAL NOTES**
1. COORDINATE WORK WITH ALL OTHER TRADES ON SITE.
 2. FIELD VERIFY EXISTING CONDITIONS PRIOR TO COMMENCING WORK.
 3. PRIOR TO COMMENCING WORK, COORDINATE WITH SITE CONTRACTOR FOR SANITARY SEWER AND WATER INVERT ELEVATIONS.
 4. COORDINATE ALL BELOW GRADE NATURAL GAS PIPE ROUTING WITH EXISTING SITE CONDITIONS.

AGP
 the Abila Griffin
 Partnership L.L.C.

201 N. BROADWAY
 SUITE 210
 MOORE, OK. 73160
 405.735.3477
 AGP@theAGP.net
 www.theAGP.net

KFC ENGINEERING
 STRUCTURAL
 SALAS O'BRIEN
 MECHANICAL / ELECTRICAL



KS
 drawn by
 KP
 checked by
 OCTOBER 2024
 date
 revisions



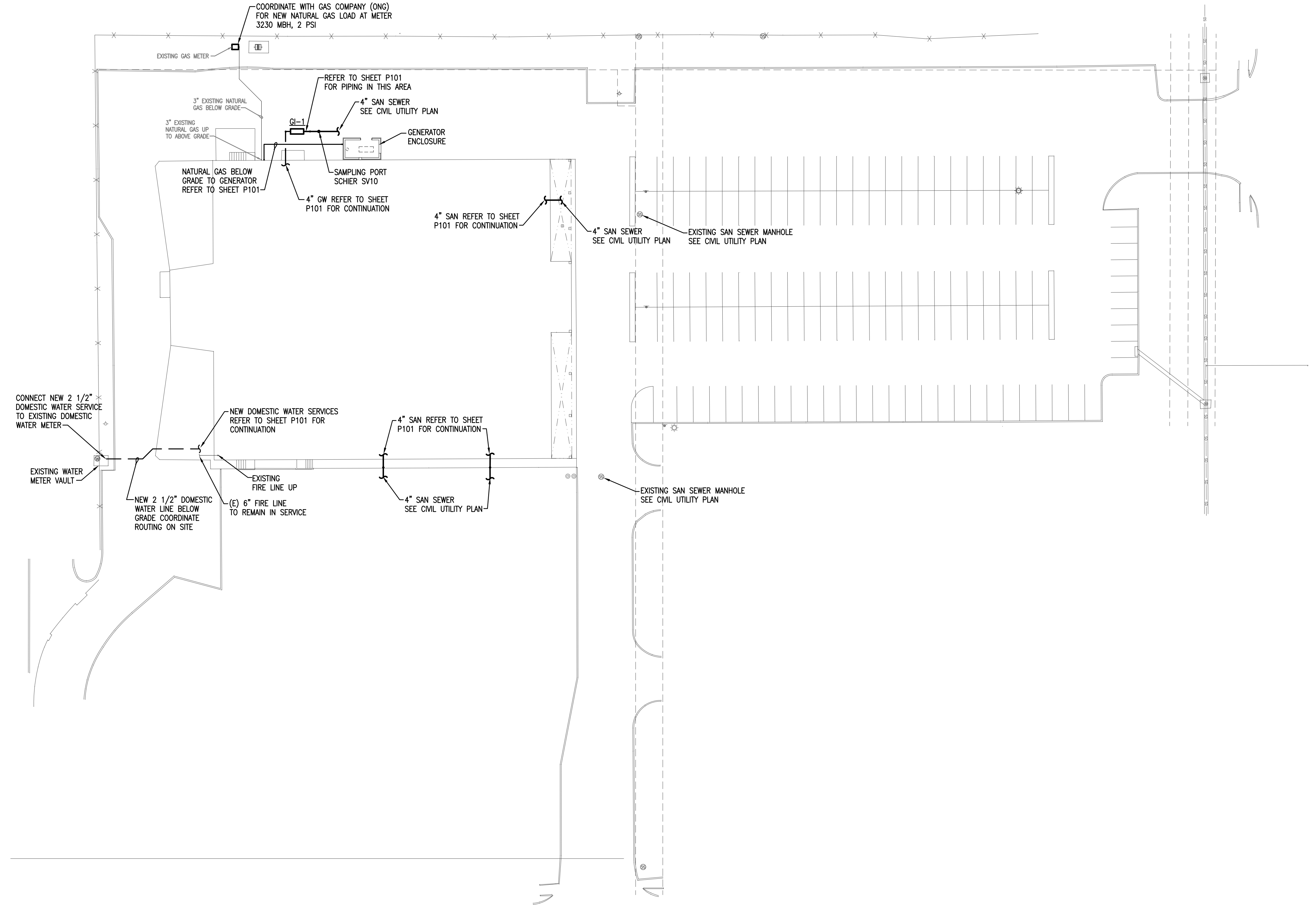
CHILD CARE FACILITY
 201 N. EASTERN AVE.

sheet no:

P001

Salas O'Brien
 2900 S. Telephone Road, Suite 120
 Moore, OK 73160
 Salas O'Brien Registration: CA# 7058
 Expiration Date: 6/30/2025
 Salas O'Brien Project Number: 2450-70304-00

OWNERSHIP USE OF DOCUMENTS:
 AGP EXPRESSLY RESERVES ITS
 COPYRIGHT AND OTHER PROPERTY
 RIGHTS OF ALL PLANS AND DRAWINGS
 DESIGNED AND/OR PRODUCED. PLANS
 AND DRAWINGS ARE NOT TO BE
 REPRODUCED IN ANY FORM OR MANNER
 WITHOUT THE EXPRESSED WRITTEN
 CONSENT OF AGP.

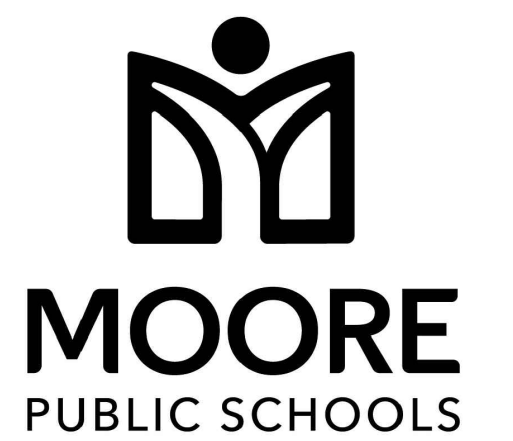


1 PLUMBING SITE PLAN
 SCALE: 1/32" = 1'-0"





KS
drawn by
KP
checked by
OCTOBER 2024
date
revisions



CHILD CARE FACILITY
201 N. EASTERN AVE.

sheet no:

P101

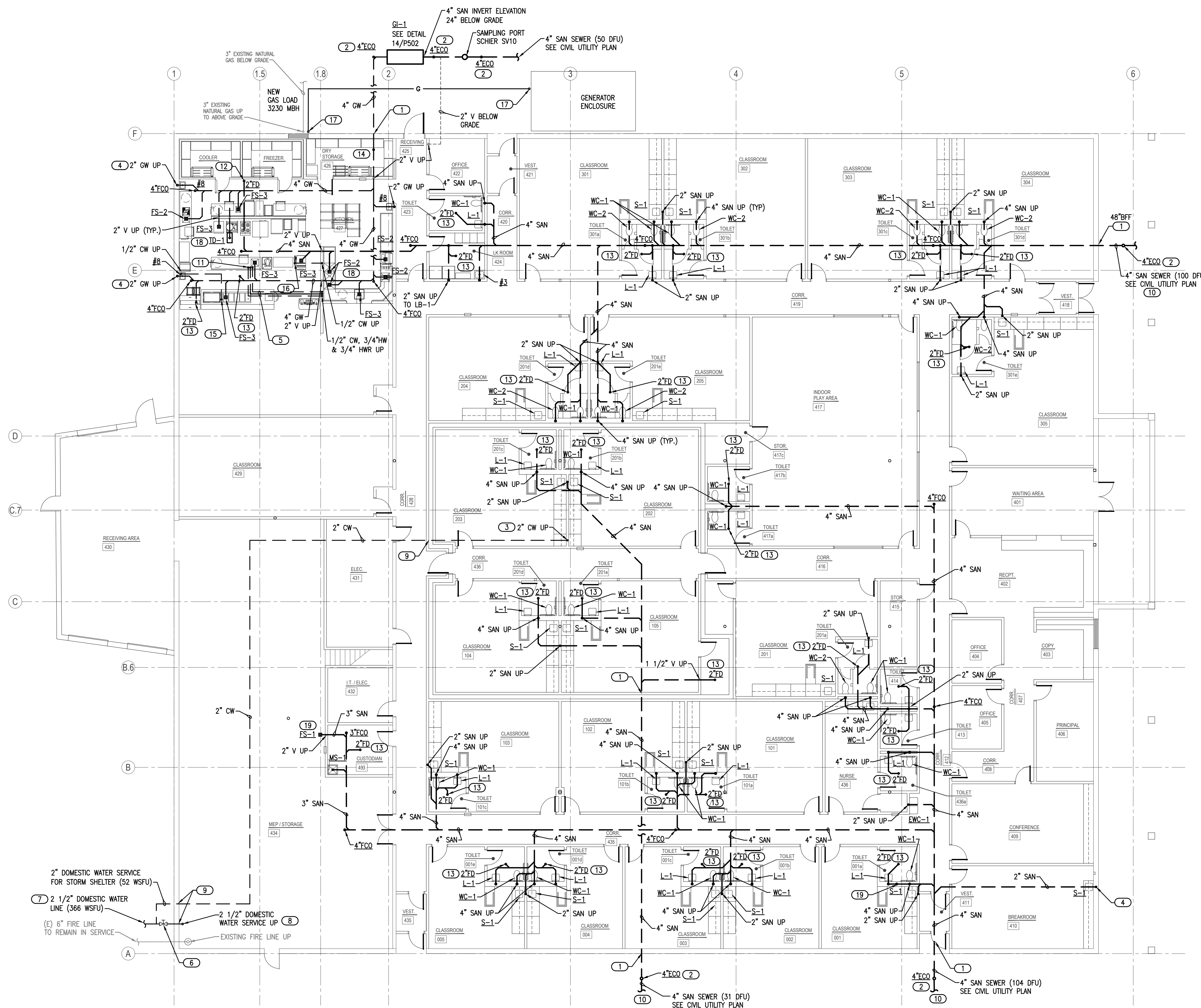
OWNERSHIP USE OF DOCUMENTS:
AGP EXPRESSLY RESERVES ITS COPYRIGHT AND OTHER PROPERTY RIGHTS OF ALL PLANS AND DRAWINGS DESIGNED AND/OR PRODUCED. PLANS AND DRAWINGS ARE NOT TO BE REPRODUCED IN ANY FORM OR MANNER WITHOUT THE EXPRESSED WRITTEN CONSENT OF AGP.

GENERAL NOTES

- COORDINATE WORK WITH ALL OTHER TRADES ON SITE.
- COORDINATE ALL BELOW GRADE PIPE ROUTING WITH STRUCTURAL FOUNDATIONS AND REQUIRED PIPE SLEEVES THRU FOUNDATION PENETRATIONS.
- FIELD VERIFY EXISTING CONDITIONS PRIOR TO COMMENCING WORK.
- PRIOR TO COMMENCING WORK, COORDINATE WITH SITE CONTRACTOR FOR SANITARY SEWER AND WATER INVERT ELEVATIONS.
- REFER TO PLUMBING FIXTURE SCHEDULE ON SHEET P601 FOR FIXTURE ROUGH-IN PIPE SIZES. REFER TO ISOMETRIC SHEETS P301 AND P302 FOR ADDITIONAL PIPE SIZES.
- PIPE TRENCHES SHALL HAVE SAND BEDDING TO A MINIMUM POINT 6" ABOVE THE TOP OF PIPE. REFER TO SPECIFICATIONS.
- TRAP PRIMER LINES SHALL BE COPPER TYPE "K" OR PEX-g TUBING WITH CONTINUOUS SLOPE TOWARDS DRAIN CONNECTION.
- COORDINATE WITH GENERAL CONTRACTOR FOR ALL REQUIRED FLOOR CUTTING AND PATCHING TO INSTALL NEW BELOW GRADE/FLOOR PIPING.
- INSTALL TRAP PRIMER LINES TO ALL FLOOR DRAINS AND FLOOR SINKS. SEE DETAIL 1/P501.

KEYED NOTES

- PROVIDE CAST IRON PIPE SLEEVE FOR SANITARY OR GREASE WASTE PIPE BELOW OR THRU FOUNDATION WALL OR GRADE BEAM. INSTALL FOAM SPACER BLOCKS TO MAINTAIN PIPE IN CENTER OF SLEEVE. COORDINATE PIPE SLEEVE INSTALLATION WITH STRUCTURAL.
- INSTALL 4" EXTERIOR CLEANOUT IN CONCRETE PAD AT GRADE. COORDINATE INVERT ELEVATION WITH CIVIL. SEE DETAIL 4/P501.
- INSTALL PVC PIPE SLEEVE THRU CONCRETE FLOOR AND STUB UP 2" AFF FOR WATER LINE. INSTALL FOAM PIPE INSULATION ON WATER LINE IN SLEEVE. SEAL SLEEVE OPENINGS WATERTIGHT.
- ROUTE 2" SANITARY OR GREASE WASTE UP INTO FUR OUT OF EXISTING CMU WALL. COORDINATE PIPE ROUTING WITH EXISTING WALL FOOTING.
- ROUTE 1/2" CW, 3/4" HW AND 3/4" HWR (PEX-g TUBING) BELOW FLOOR TO COOK'S TABLE PREP SINK.
- INSTALL DOMESTIC WATER CURB STOP IN NEW WATER SERVICE WITH ACCESS COVER AT GRADE.
- REMOVE EXISTING BELOW GRADE 1 1/2" DOMESTIC WATER SERVICE PIPE FROM BUILDING OUT TO WATER METER CONNECTION. REPLACE WITH 2 1/2" PIPE. COORDINATE WORK WITH SITE CONTRACTOR AND CITY WATER UTILITY DEPARTMENT. SEE SHEET P001 FOR CONTINUATION.
- REMOVE EXISTING 1 1/2" DOMESTIC WATER SERVICE PIPE AND REPLACE WITH 2 1/2" PIPE. INSTALL PIPE IN PVC PIPE SLEEVE THRU CONCRETE FLOOR. INSULATE PIPE IN SLEEVE WITH CELLULAR FOAM INSULATION.
- COORDINATE WITH STRUCTURAL FOR ROUTING WATER LINE IN PIPE SLEEVE THRU FOOTING OR FOUNDATION WALL IN THIS AREA.
- COORDINATE 4" SANITARY SEWER CONNECTION TO EXISTING SEWER MANHOLE WITH SITE CONTRACTOR.
- ROUTE 1/2" CW, 3/4" HW AND 3/4" HWR (PEX-g TUBING) FROM BELOW FLOOR UP TO SERVE COOK'S TABLE PREP SINK. INSTALL PIPE SLEEVE AT FLOOR PENETRATION FOR WATER LINES. INSULATE WATER LINES WITH FOAM INSULATION IN SLEEVE. SEE SHEET P110 FOR CONTINUATION.
- INSTALL FUNNEL FASTENED TO STRAINER FOR CONDENSATE DRAIN LINES FROM FREEZER AND COOLER. MINIMUM FUNNEL HEIGHT 3" AND TOP DIAMETER 4". PROVIDE TRAP PRIMER LINE TO FLOOR DRAIN.
- INSTALL TRAP PRIMER LINE TO FLOOR DRAIN. SEE DETAIL 1/P501.
- 4" GREASE WASTE DOWN AND THRU EXISTING WALL FOOTING. COORDINATE ROUTING WITH STRUCTURAL.
- ROUTE 1/2" CW (PEX-g TUBING) FROM BELOW FLOOR UP SERVING COUNTER COLD WELL. INSTALL PIPE SLEEVE AT FLOOR PENETRATION FOR WATER LINES. INSULATE WATER LINES WITH FOAM INSULATION IN SLEEVE. SEE SHEET P110 FOR CONTINUATION.
- ROUTE 1/2" CW (PEX-g TUBING) FROM BELOW FLOOR UP TO SERVE ICEMAKER. INSTALL PIPE SLEEVE AT FLOOR PENETRATION FOR WATER LINES. INSULATE WATER LINES WITH FOAM INSULATION IN SLEEVE. SEE SHEET P110 FOR CONTINUATION.
- INSTALL 1" NATURAL GAS (2 PSI) ANODELESS GAS RISER FOR TRANSITION FROM BELOW GRADE MDPE TUBING TO ABOVE GRADE BLACK IRON PIPE. COORDINATE LOCATION ON SITE.
- PROVIDE TRAP PRIMER LINE TO FLOOR SINK OR TRENCH DRAIN. ROUTE LINE BELOW OR ABOVE FLOOR AS REQUIRED FOR LOCATION.
- ROUTE 3" SANITARY UP TO OPEN SITE DRAIN IN CHASE FOR CONDENSATE DRAIN LINES.



1 PLUMBING PLAN - BELOW GRADE

SCALE: 3/32" = 1'-0"



2900 S. Telephone Road, Suite 120
Moore, OK 73160
Salas O'Brien Registration: CA# 7058
Expiration Date: 6/30/2025
Salas O'Brien Project Number: 2450-70304-00



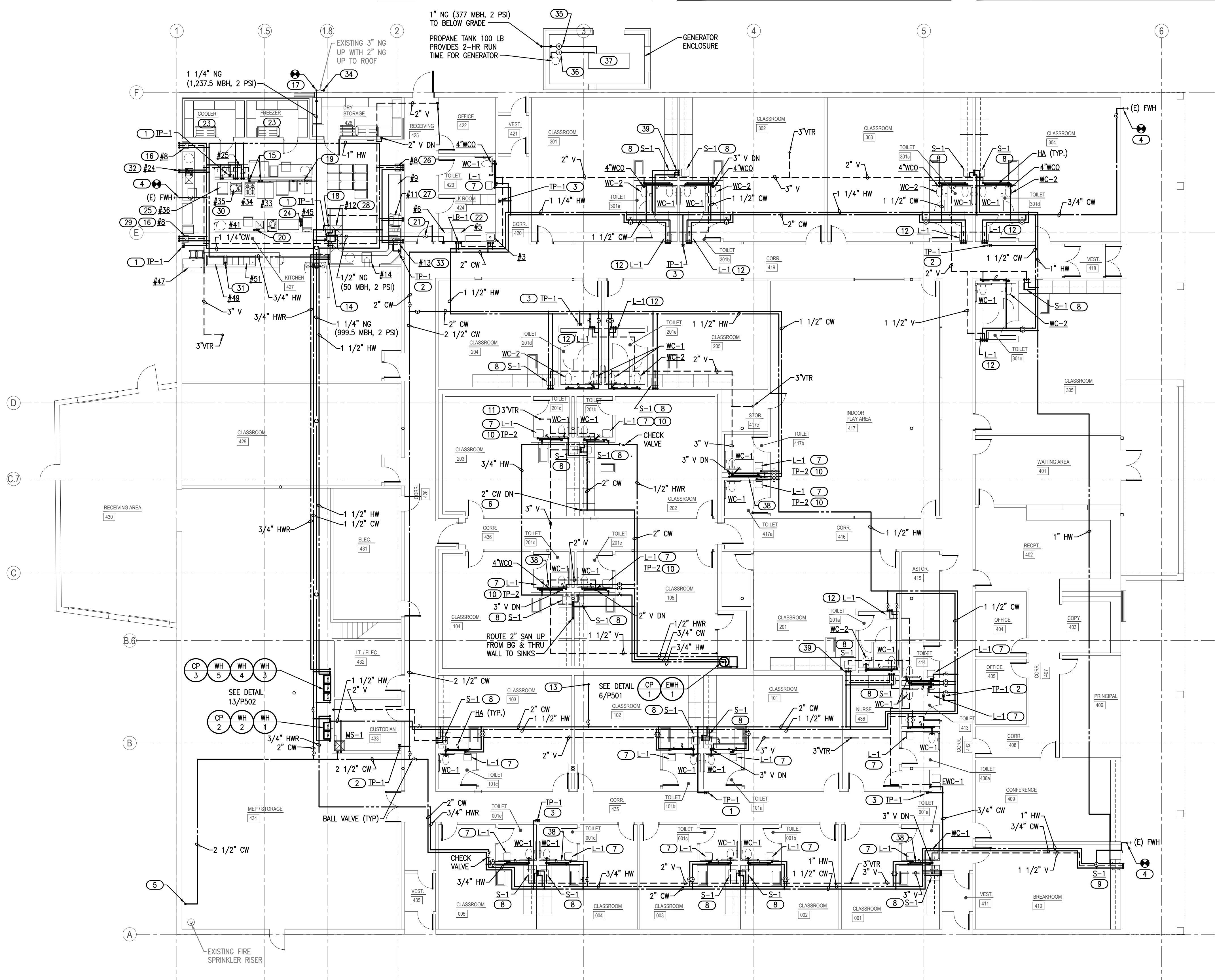
- KEYED NOTES**
- 36 INSTALL 100 POUND PROPANE TANK WITH SUPPORT STRAP FASTENED TO WALL. INSTALL 2-STAGE PRESSURE REGULATOR WITH VENT PIPED TO ROOF WITH GOOSENECK. ROUTE 1" PROPANE GAS LINE TO GENERATOR. (355 MBH, 10" W.C. PRESSURE). COORDINATE CONNECTION WITH GENERATOR SUPPLIER ON SITE.
 - 37 DUAL FUEL GENERATOR WITH AUTOMATIC SWITCH OVER TO PROPANE WHEN UNIT SENSES LOSS OF NATURAL GAS PRESSURE IN FUEL INLET 1.
 - 38 INSTALL 2" OPEN SITE DRAIN IN CHASE FOR CONDENSATE DRAIN LINES FROM RTU'S. CONNECT TO SANITARY SERVING LAVATORY. COORDINATE ROUTING WITH MC. COORDINATE WALL ACCESS PANEL WITH GC.
 - 39 INSTALL 1 1/2" OPEN SITE DRAIN IN SINK CABINET FOR CONDENSATE DRAIN LINES FROM RTU'S. CONNECT TO SANITARY SERVING SINK. COORDINATE ROUTING WITH MC.

- KEYED NOTES**
- 32 ROUTE 1/2" CW AND 1/2" HW DOWN INTO FUR OUT OF EXISTING CMU WALL TO SERVE PREP SINK #24 PROVIDED BY KEC. COORDINATE PIPE ROUTING WITH GC. ROUGH-IN AND PROVIDE FINAL UNIT CONNECTION.
 - 33 3/4" CW AND 3/4" HW DROPS IN WALL TO SERVE FAUCET AND HOSE REEL PROVIDED BY KEC. ROUTE DRAIN LINE TO FLOOR SINK WITH AIR GAP. ROUGH-IN AND PROVIDE FINAL UNIT CONNECTION.
 - 34 CONNECT NEW 1" NATURAL GAS LINE (2 PSI) WITH LOCKABLE SHUT-OFF VALVE TO EXISTING 3" NATURAL GAS RISER AND ROUTE DOWN TO BELOW GRADE TO SERVE GENERATOR.
 - 35 INSTALL 1" NATURAL GAS (2 PSI) BALL VALVE, DRIP LEG, PRESSURE REGULATOR, UNION AND FINAL 1" CONNECTION (10" W.C. PRESSURE) TO GENERATOR. COORDINATE CONNECTION WITH GENERATOR SUPPLIER ON SITE.

- KEYED NOTES**
- 28 3/4" CW AND 3/4" HW DROPS IN WALL TO SERVE 2 FAUCETS AT #12 3-COMP SINK PROVIDED BY KEC. ROUTE DRAIN LINES TO FLOOR SINK WITH AIR GAP. ROUGH-IN AND PROVIDE FINAL UNIT CONNECTION. SEE DETAIL 15/P502.
 - 29 ROUTE 1/2" CW FROM HAND SINK DOWN WITH TRANSITION TO PEX TUBING TO BELOW FLOOR TO SERVE COLD WELL AT SERVING COUNTER.
 - 30 1/2" CW AND 1/2" HW DOWN IN WALL TO SERVE KETTLE #35 PROVIDED BY KEC. ROUGH-IN AND PROVIDE FINAL UNIT CONNECTION.
 - 31 CONNECT 1/2" CW TO FAUCET AT SERVING COUNTER COLD WELL. ROUTE 1/2" CW LINE DOWN WITH TRANSITION TO PEX TUBING TO BELOW FLOOR TO PROVIDED BY KEC. ROUGH-IN AND PROVIDE FINAL UNIT CONNECTION.

- KEYED NOTES**
- 24 ROUTE 3/4" CW UP FROM BELOW FLOOR AND CONNECT TO ICE MAKER #45. ROUGH-IN AND PROVIDE FINAL UNIT CONNECTION. ICE MAKER PROVIDED BY KEC. ROUTE DRAIN LINE TO FLOOR SINK.
 - 25 INSTALL (2) 3/4" CW DROPS IN WALL TO SERVE CONVENTION STEAMER PROVIDED BY KEC. ROUTE DRAIN LINE TO FLOOR SINK WITH AIR GAP. ROUGH-IN AND PROVIDE FINAL UNIT CONNECTION.
 - 26 ROUTE 1/2" CW, 1/2" HW AND 1 1/2" VENT DOWN IN WALL TO SERVE HAND SINK PROVIDED BY KEC. PROVIDE THERMOSTATIC MIXING VALVE AND PIPE WRAP UNDER FIXTURE. ROUGH-IN AND PROVIDE FINAL UNIT CONNECTION.
 - 27 1/2" CW AND 1/2" HW DROPS IN WALL TO SERVE DISHWASHER #11 PROVIDED BY KEC. ROUGH-IN AND PROVIDE FINAL UNIT CONNECTION. PROVIDE WATER ARRESTORS, TRYS AND VALVES ON WATER LINES IN ACCESSIBLE LOCATION. ROUTE DRAIN LINE TO FLOOR SINK.

- GENERAL NOTES**
- COORDINATE WORK WITH ALL OTHER TRADES ON SITE.
 - PROVIDE WATER HAMMER ARRESTORS (HA) ON WATER LINES TO FLUSH VALVES, AND QUICK CLOSING VALVES. LOCATE UNITS IN ACCESSIBLE LOCATIONS.
 - SINK AND LAVATORY WATER SUPPLY STUB OUTS SHALL BE COPPER PIPE WITH SUPPORT BRACKET FASTENED IN WALL CAVITY.
 - FIRE SEAL ALL PENETRATIONS THRU RATED STRUCTURES TO MAINTAIN FIRE RATING.
 - REFER TO PLUMBING FIXTURE SCHEDULE ON SHEET P601 FOR FIXTURE ROUGH-IN PIPE SIZES. REFER TO ISOMETRIC SHEETS P301 AND P302 FOR ADDITIONAL PIPE SIZES.
 - PROVIDE ACCESS PANELS FOR ALL VALVES/DEVICES ABOVE HARD CEILINGS AND BEHIND WALLS.
 - ALL GAS PIPE SHALL COMPLY WITH IFCC. BRANCH LINES SHALL TAP OFF TOP OF GAS MAINS AND INSTALL SHUT-OFF VALVE ON BRANCH LINE.
 - TRAP PRIMER LINES SHALL BE COPPER TYPE "K" OR PEX-a TUBING WITH CONTINUOUS SLOPE TOWARDS DRAIN CONNECTION.
 - FIELD VERIFY EXISTING CONDITIONS PRIOR TO COMMENCING WORK.



- KEYED NOTES**
- INSTALL ELECTRIC TRAP PRIMER ASSEMBLY (TP-1) ABOVE LAY-IN CEILING IN ACCESSIBLE LOCATION. ROUTE (4) 1/2" DISCHARGE LINES TO FLOOR DRAINS IN THIS AREA. COORDINATE POWER WITH EC. SEE DETAIL 1/P501.
 - INSTALL ELECTRIC TRAP PRIMER ASSEMBLY (TP-1) ABOVE LAY-IN CEILING IN ACCESSIBLE LOCATION. ROUTE (3) 1/2" DISCHARGE LINES TO FLOOR DRAINS OR FLOOR SINKS IN THIS AREA. COORDINATE POWER WITH EC. SEE DETAIL 1/P501.
 - INSTALL ELECTRIC TRAP PRIMER ASSEMBLY (TP-1) ABOVE LAY-IN CEILING IN ACCESSIBLE LOCATION. ROUTE (2) 1/2" DISCHARGE LINES TO FLOOR DRAINS IN THIS AREA. COORDINATE POWER WITH EC. SEE DETAIL 1/P501.
 - FIELD VERIFY LOCATION OF EXISTING WALL HYDRANT AND CONNECT NEW 3/4" CW TO EXISTING PIPE SERVING WALL HYDRANT.
 - ROUTE INSULATED 2 1/2" CW PIPE DOWN WITH BALL VALVE AT 24" AFF. AND CONNECT TO NEW WATER SERVICE.
 - ROUTE 2" CW PIPE DOWN TO BELOW FLOOR. INSTALL ACCESS PANEL IN BACK OF CABINET FOR BALL VALVE. SEE SHEET P101 FOR CONTINUATION.
 - ROUTE 1/2" CW, 1/2" HW AND 1 1/2" VENT IN CHASE TO SERVE LAVATORY. INSTALL THERMOSTATIC MIXING VALVE (TMV-1) BELOW FIXTURE. SEE DETAIL 5/P501.
 - 1/2" CW, 1/2" HW AND 1 1/2" VENT DOWN IN WALL TO SERVE SINK. INSTALL THERMOSTATIC MIXING VALVE (TMV-1) BELOW FIXTURE. SEE DETAIL 5/P501.
 - 1/2" CW, 1/2" HW AND 1 1/2" VENT DOWN INTO FUR OUT OF EXISTING CMU WALL TO SERVE SINK. INSTALL THERMOSTATIC MIXING VALVE (TMV-1) BELOW FIXTURE. SEE DETAIL 5/P501. COORDINATE PIPE ROUTING WITH ARCHITECT AND GC.
 - INSTALL TRAP PRIMER (TP-2) UNDER LAVATORY. INSTALL PER MANUFACTURER'S RECOMMENDATIONS. SEE DETAIL 11/P501.
 - COORDINATE WITH STRUCTURAL FOR DEBRIS GUARD BELOW SHELTER ROOF FOR PLUMBING VENT ROOF PENETRATION.
 - 1/2" CW, 1/2" HW AND 1 1/2" VENT DOWN IN WALL TO SERVE LAVATORY. INSTALL THERMOSTATIC MIXING VALVE (TMV-1) BELOW FIXTURE. SEE DETAIL 5/P501.
 - 3/4" CW UP TO ROOF HYDRANT. SEE SHEET P201 FOR CONTINUATION.
 - ROUTE 1/2" CW, 3/4" HW AND 3/4" HWR DOWN IN WALL WITH PEX TUBING TO BELOW FLOOR TO SERVE ISLAND PREP SINK.
 - ROUTE 1" NG (LOW PRESS) BEHIND EQUIPMENT AND PROVIDE 3/4" GAS TO KITCHEN EQUIPMENT (33 & 34) PROVIDED BY KEC. PROVIDE SHUT-OFF VALVE AND FINAL UNIT CONNECTION. SEE DETAIL 9/P501.
 - ROUTE 1/2" CW, 1/2" HW AND 1/2" HWR INTO FUR OUT OF EXISTING CMU WALL TO SERVE HAND SINK PROVIDED BY KEC. PROVIDE THERMOSTATIC MIXING VALVE AND PIPE WRAP UNDER FIXTURE. COORDINATE PIPE ROUTING WITH GC.
 - CONNECT NEW 1 1/4" NATURAL GAS LINE (2 PSI) TO EXISTING 3" NATURAL GAS RISER AND ROUTE NEW LINE INTO BUILDING.
 - ROUTE 3/4" CW DOWN IN WALL WITH TRANSITION TO PEX TUBING TO BELOW FLOOR TO SERVE ICE MAKER PROVIDED BY KEC. ROUGH-IN AND PROVIDE FINAL UNIT CONNECTION.
 - INSTALL 3/4" NATURAL GAS BALL VALVE AND PRESSURE REGULATOR (KITCHEN EQUIP). INSTALL GAS SOLENOID VALVE FURNISHED BY KITCHEN EQUIPMENT SUPPLIER AND COORDINATE POWER WITH EC TO INTERLOCK WITH EXHAUST HOOD FIRE SUPPRESSION SYSTEM.
 - ROUTE 1/2" CW, 3/4" HW AND 3/4" HWR UP FROM BELOW FLOOR, TRANSITION TO COPPER PIPE AND CONNECT TO COOK'S TABLE SINK PROVIDED BY KEC. ROUGH-IN AND PROVIDE FINAL UNIT CONNECTION.
 - INSTALL 1/2" BALL VALVE AND PRESSURE REGULATOR IN NATURAL GAS LINE SUPPLYING DRYER #6. PROVIDE 1/2" LOW PRESSURE GAS DOWN IN WALL TO GAS VALVE BOX (GVB-1) AND FLEXIBLE CONNECTION TO UNIT.
 - CLOTHES WASHER FURNISHED BY OTHERS. ROUGH-IN AND MAKE FINAL CONNECTION. PROVIDE 1/2" CW AND HW LINES DOWN IN WALL TO LAUNDRY BOX. CONNECT FLEXIBLE SUPPLY LINES TO WASHER. ROUTE WASHER DRAIN LINE INTO WALL BOX DRAIN FITTING AND SECURE. COORDINATE WITH EQUIPMENT SUPPLIER.
 - COORDINATE WITH FREEZER / COOLER SUPPLIER FOR ROUTING CONDENSATE DRAIN LINES TO FLOOR DRAIN. INSTALL ELECTRIC HEAT TAPE AND PIPE INSULATION ON DRAIN LINES PER MFR'S GUIDELINES.

1 PLUMBING PLAN - ABOVE GRADE
SCALE: 3/32" = 1'-0"

AGP
the Abila Griffin
Partnership L.L.C.
201 N. BROADWAY
SUITE 210
MOORE, OK. 73160
405.735.3477
AGP@theAGP.net
www.theAGP.net

KFC ENGINEERING
STRUCTURAL
SALAS O'BRIEN
MECHANICAL / ELECTRICAL



KS
drawn by
KP
checked by
OCTOBER 2024
date

revisions



CHILD CARE FACILITY
201 N. EASTERN AVE.

sheet no:

P110

Salas O'Brien
2900 S. Telephone Road, Suite 120
Moore, OK 73160
Salas O'Brien Registration: CA# 7058
Expiration Date: 6/30/2025
Salas O'Brien Project Number: 2450-70304-00

OWNERSHIP USE OF DOCUMENTS:
AGP EXPRESSLY RESERVES ITS
COPYRIGHT AND OTHER PROPERTY
RIGHTS OF ALL PLANS AND DRAWINGS
DESIGNED AND/OR PRODUCED. PLANS
AND DRAWINGS ARE NOT TO BE
REPRODUCED IN ANY FORM OR MANNER
WITHOUT THE EXPRESSED WRITTEN
CONSENT OF AGP.



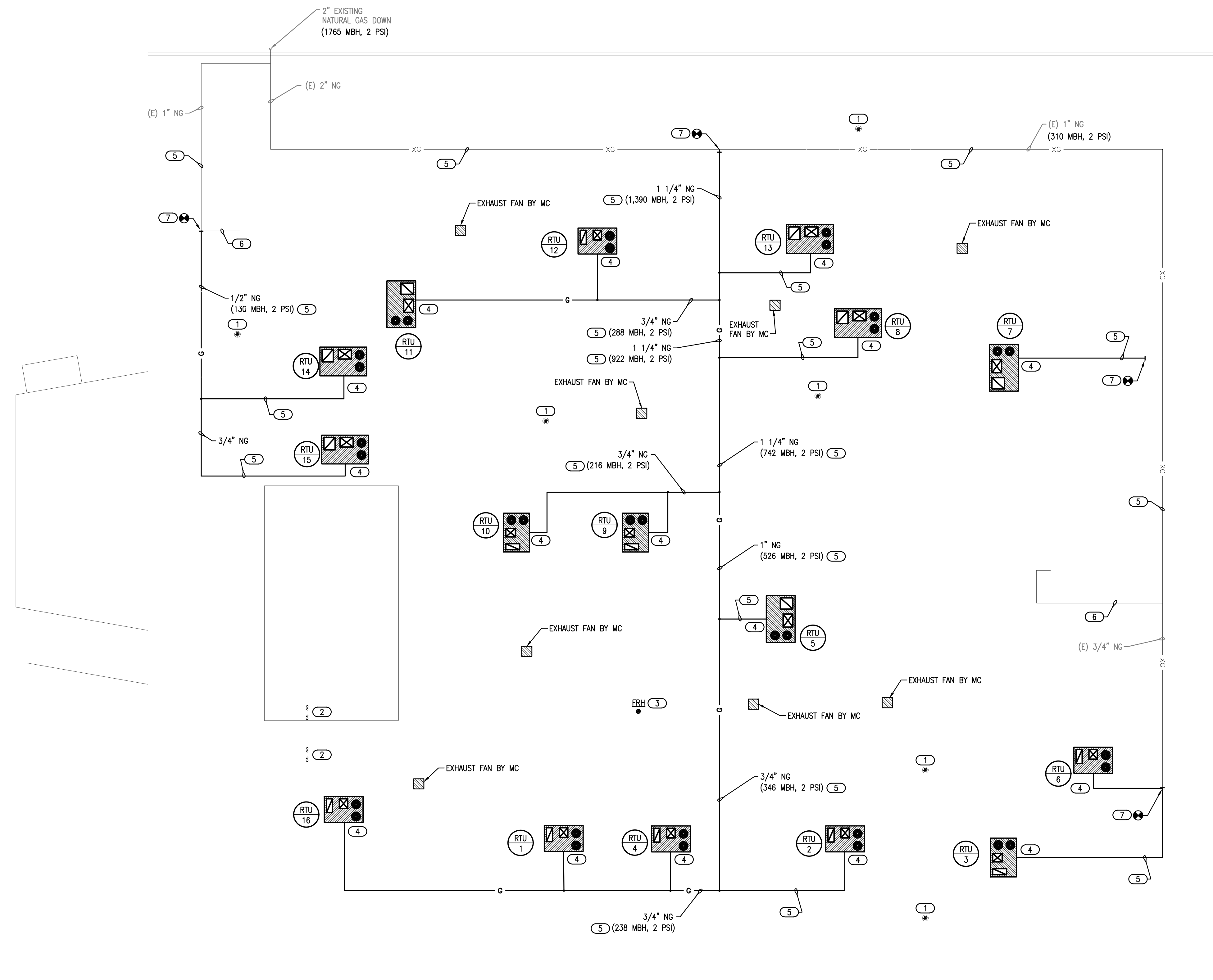


GENERAL NOTES

- COORDINATE WITH ALL OTHER TRADES ON SITE.
- FIELD VERIFY EXISTING CONDITIONS PRIOR TO COMMENCING WORK.
- MAINTAIN A MINIMUM OF 10'-0" CLEAR BETWEEN EXHAUST AND INTAKE VENTS WITH MECHANICAL EQUIPMENT AND OTHER ROOF OPENINGS.
- ALL ABOVE GRADE EXTERIOR NATURAL GAS PIPE SHALL BE CLEANED AND DEGREASED PRIOR TO BEING PRIMED THEN PAINTED YELLOW WITH WEATHER RESISTANT ZINC RICH PAINT.
- PIPE IDENTIFICATION SHALL BE THE WORDS "NATURAL GAS" IN BLACK LETTERS AT 5 FOOT INTERVALS USING PLASTIC PIPE MARKERS OR STENCILED PAINTED LETTERS.
- ALL GAS PIPE SHALL COMPLY WITH IFGC. BRANCH LINES SHALL TAP OFF TOP OF GAS MAINS AND INSTALL SHUT-OFF VALVE ON BRANCH LINE.

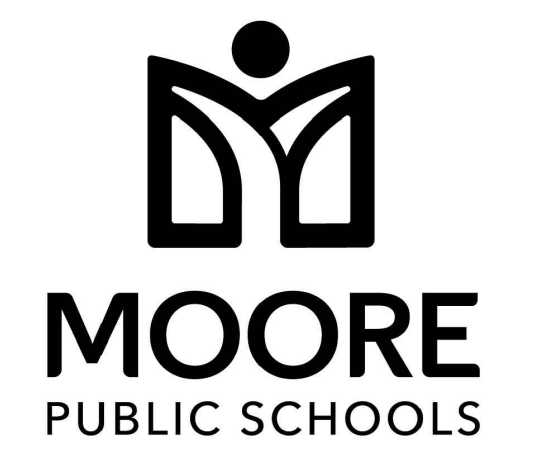
KEYED NOTES

- COORDINATE INSTALLATION OF PLUMBING VENTS WITH ROOFING CONTRACTOR. INSTALL VENT A MINIMUM 10'-0" FROM ANY OPENINGS, EQUIPMENT, INTAKES OR EXHAUST VENTS.
- COORDINATE INSTALLATION OF WATER HEATER CONCENTRIC VENT WITH ROOFING CONTRACTOR AND PER MANUFACTURER'S RECOMMENDATIONS. INSTALL VENT A MINIMUM OF 10'-0" FROM ANY OPENINGS, EQUIPMENT, INTAKES AND EXHAUST VENTS.
- COORDINATE INSTALLATION OF FREEZELESS ROOF HYDRANT (FRH) WITH STRUCTURAL AND ROOFING CONTRACTOR.
- INSTALL 1/2" NATURAL GAS LINE (2 PSI) TO ROOFTOP UNIT. PROVIDE SHUT-OFF VALVE, DRIP LEG, PRESSURE REGULATOR AND FINAL UNIT CONNECTION. ROUGH-IN AND COORDINATE FINAL CONNECTION WITH MECHANICAL CONTRACTOR. SEE DETAIL 8/P501.
- INSTALL ROOF PIPE SUPPORTS FOR NATURAL GAS PIPE (2 PSI). PROVIDE MIRO INDUSTRIES MODEL 3-RAH-8 ROOF TOP SUPPORTS OR APPROVED EQUAL. INSTALL AT MAXIMUM OF 10'-0" ON CENTER FOR 1 1/4" PIPE OR LARGER. INSTALL AT 8'-0" ON CENTER FOR 1" AND 3/4" PIPE. INSTALL AT 6'-0" ON CENTER FOR 1/2" PIPE. REFER TO GENERAL NOTES FOR PAINTING GAS PIPE. SEE DETAIL 10/P501.
- REMOVE GAS PIPING BACK TO MAIN AND CAP.
- INSTALL NEW GAS PIPE TO EXISTING GAS MAIN FOR NEW MECHANICAL EQUIPMENT. FIELD VERIFY SIZE AND LOCATION.





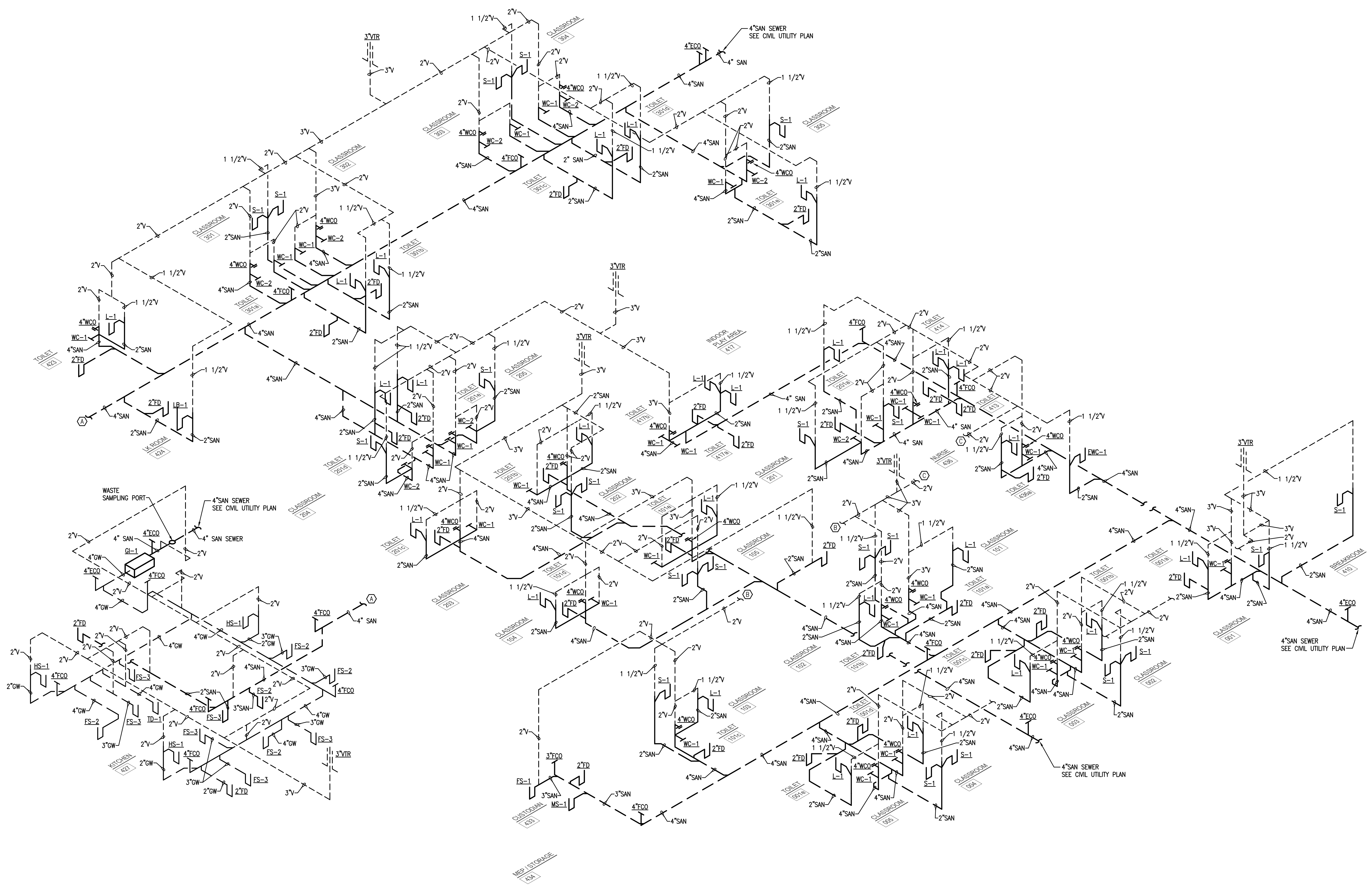
KS	drawn by
KP	checked by
OCTOBER 2024	date
	revisions



sheet no:

P301

OWNERSHIP USE OF DOCUMENTS:
AGP EXPRESSLY RESERVES ITS
COPYRIGHT AND OTHER PROPERTY
RIGHTS OF ALL PLANS AND DRAWINGS
DESIGNED AND/OR PRODUCED. PLANS
AND DRAWINGS ARE NOT TO BE
REPRODUCED IN ANY FORM OR MANNER
WITHOUT THE EXPRESSED WRITTEN
CONSENT OF AGP.



1 PLUMBING ISOMETRIC - WASTE & VENT NO SCALE

Salas O'Brien
2900 S. Telephone Road, Suite 120
Moore, OK 73160
Salas O'Brien Registration: CA# 7058
Expiration Date: 6/30/2025
Salas O'Brien Project Number: 2450-70304-00



KS	drawn by
KP	checked by
OCTOBER 2024	date
	revisions

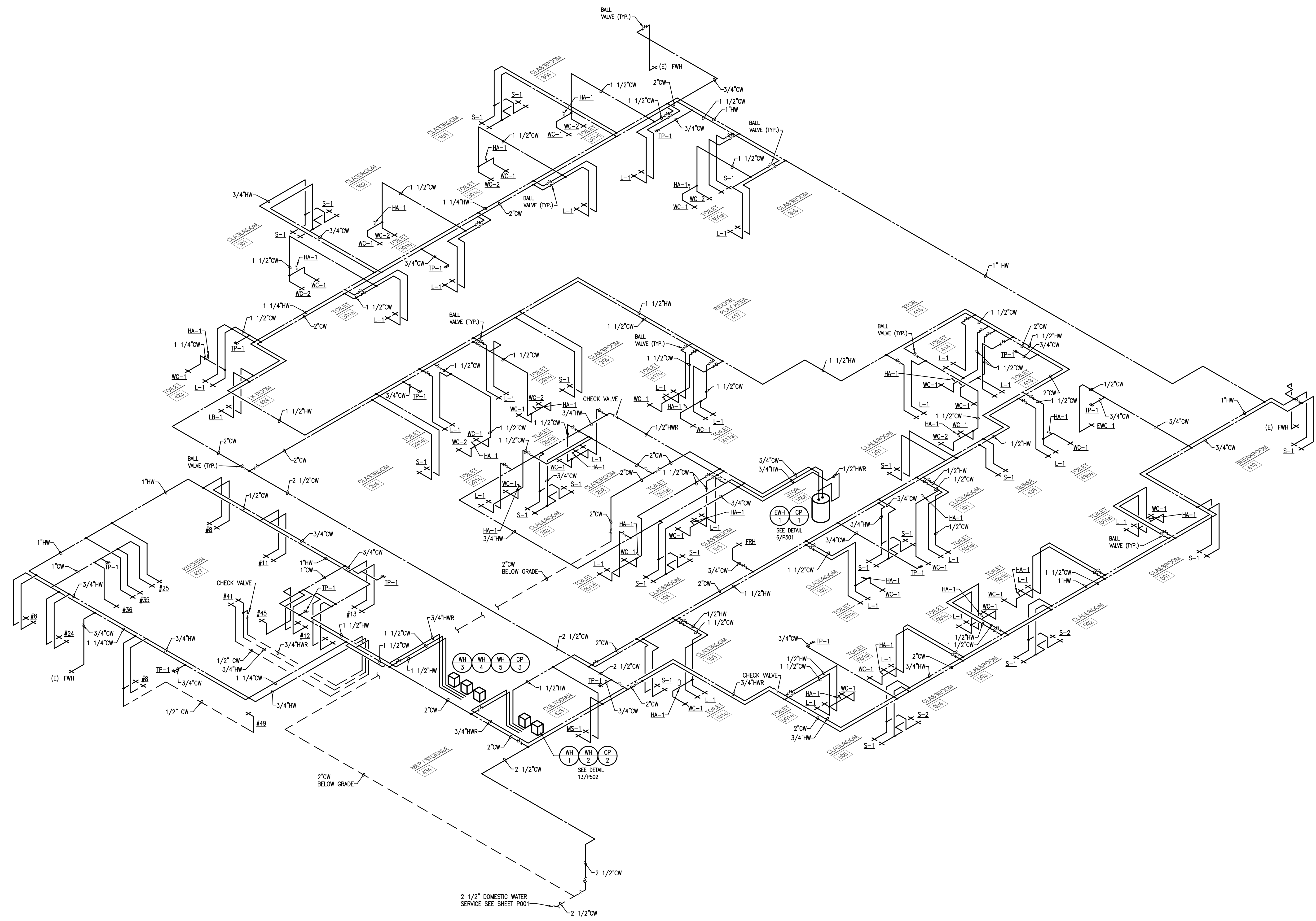


CHILD CARE FACILITY
201 N. EASTERN AVE.

sheet no:

P302

OWNERSHIP USE OF DOCUMENTS:
AGP EXPRESSLY RESERVES ITS
COPYRIGHT AND OTHER PROPERTY
RIGHTS OF ALL PLANS AND DRAWINGS
DESIGNED AND/OR PRODUCED. PLANS
AND DRAWINGS ARE NOT TO BE
REPRODUCED IN ANY FORM OR MANNER
WITHOUT THE EXPRESSED WRITTEN
CONSENT OF AGP.

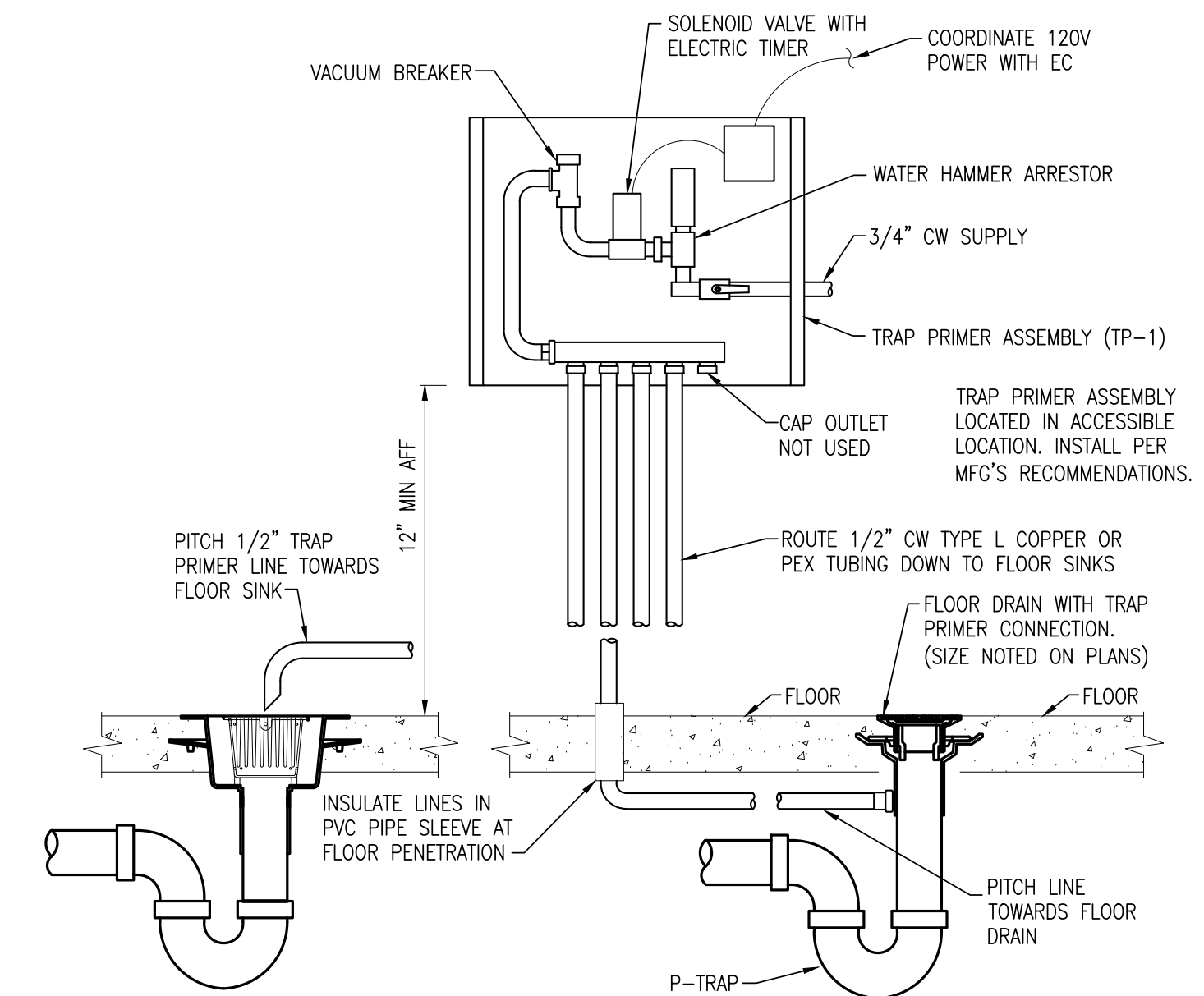


1 PLUMBING ISOMETRIC - WATER SUPPLY
NO SCALE

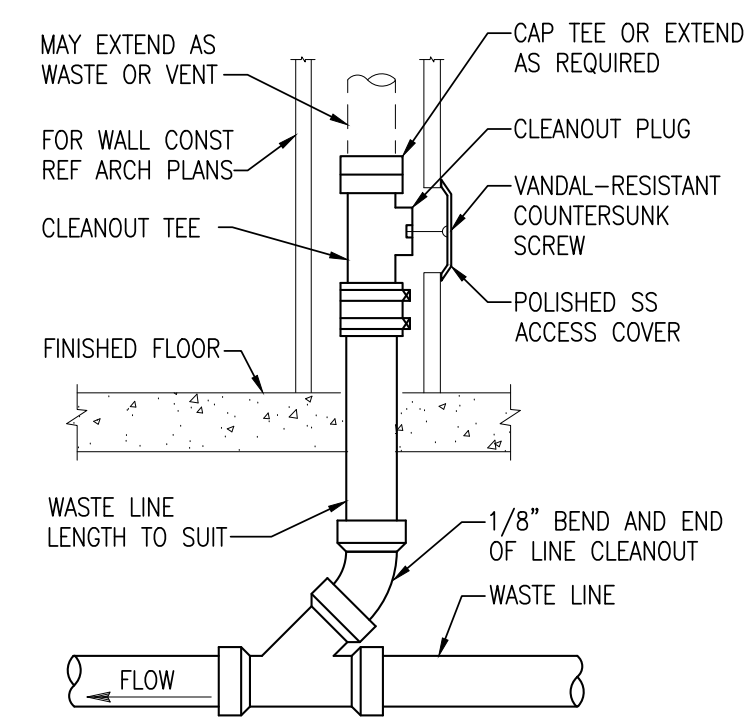
Salas O'Brien
2900 S. Telephone Road, Suite 120
Moore, OK 73160
Salas O'Brien Registration: CA# 7058
Expiration Date: 6/30/2025
Salas O'Brien Project Number: 2450-70304-00



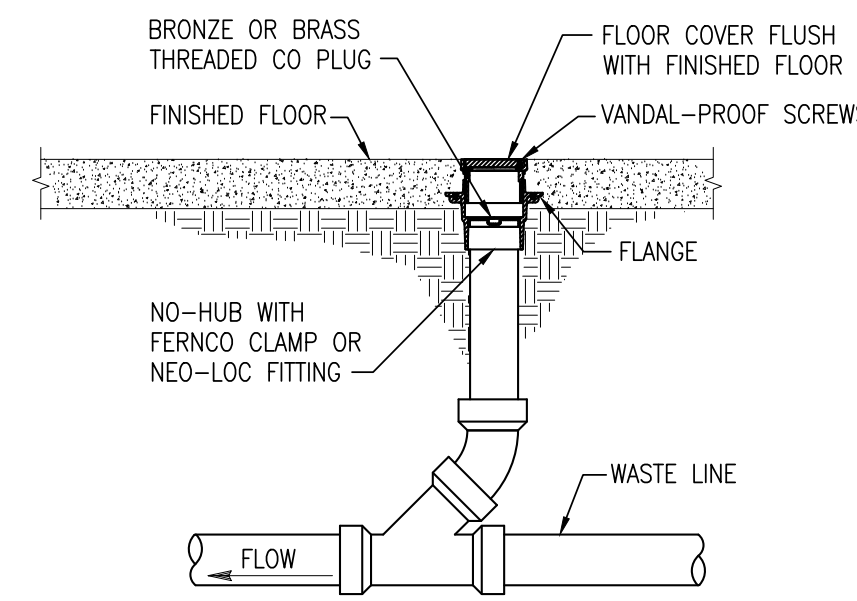
KS
drawn by
KP
checked by
OCTOBER 2024
date
revisions



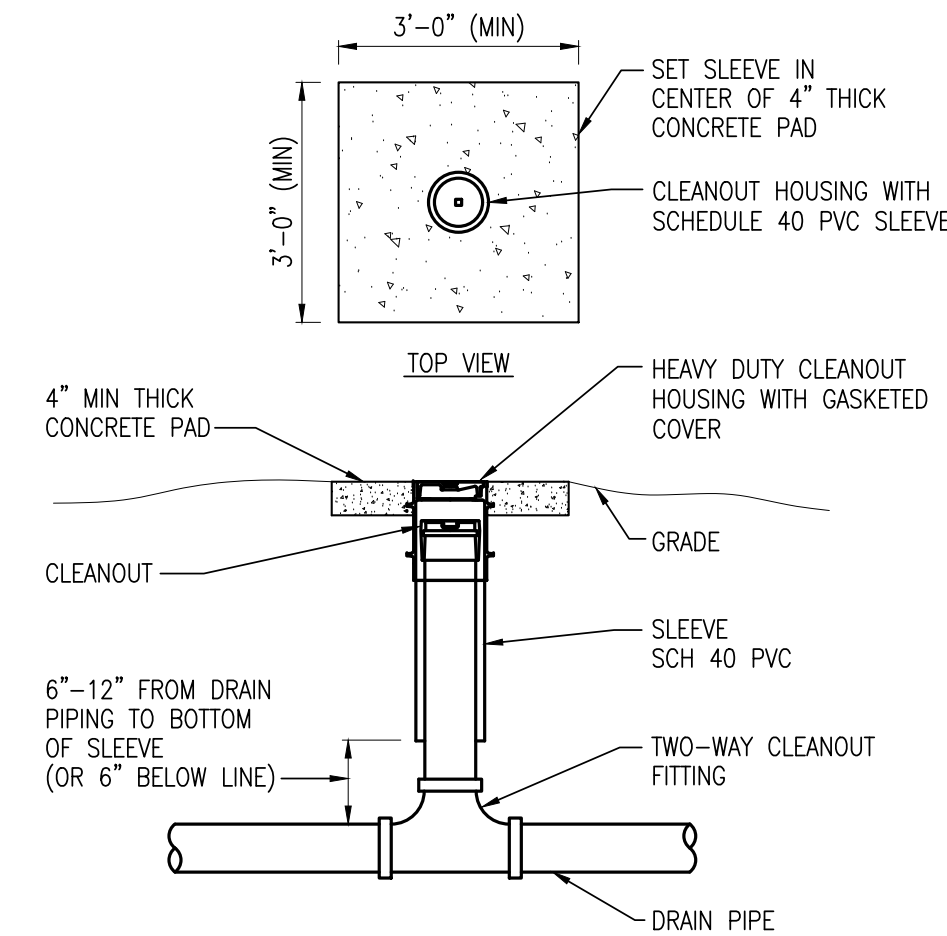
1 ELECTRONIC TRAP PRIMER MANIFOLD DETAIL
NOT TO SCALE



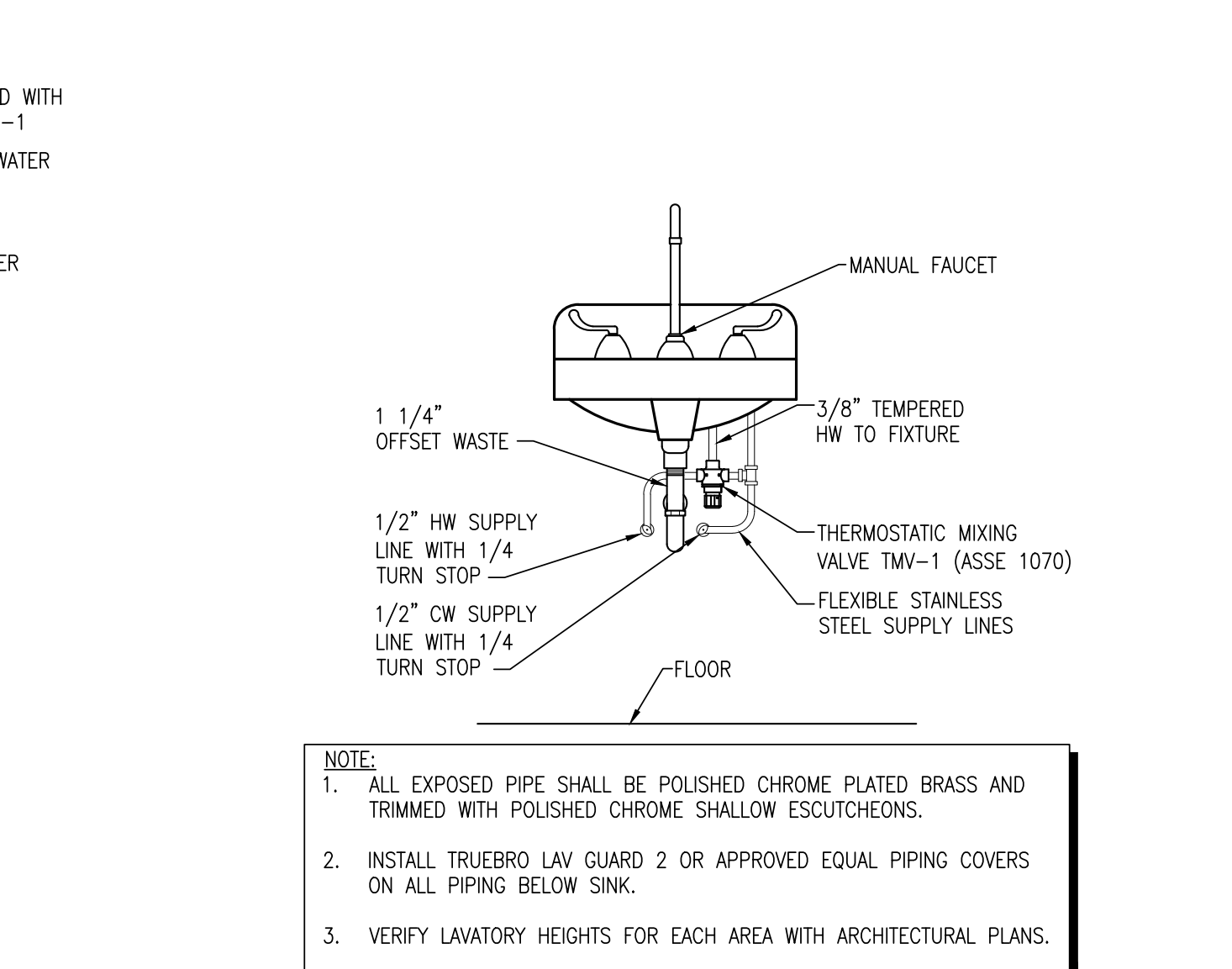
2 WALL CLEANOUT DETAIL
NOT TO SCALE



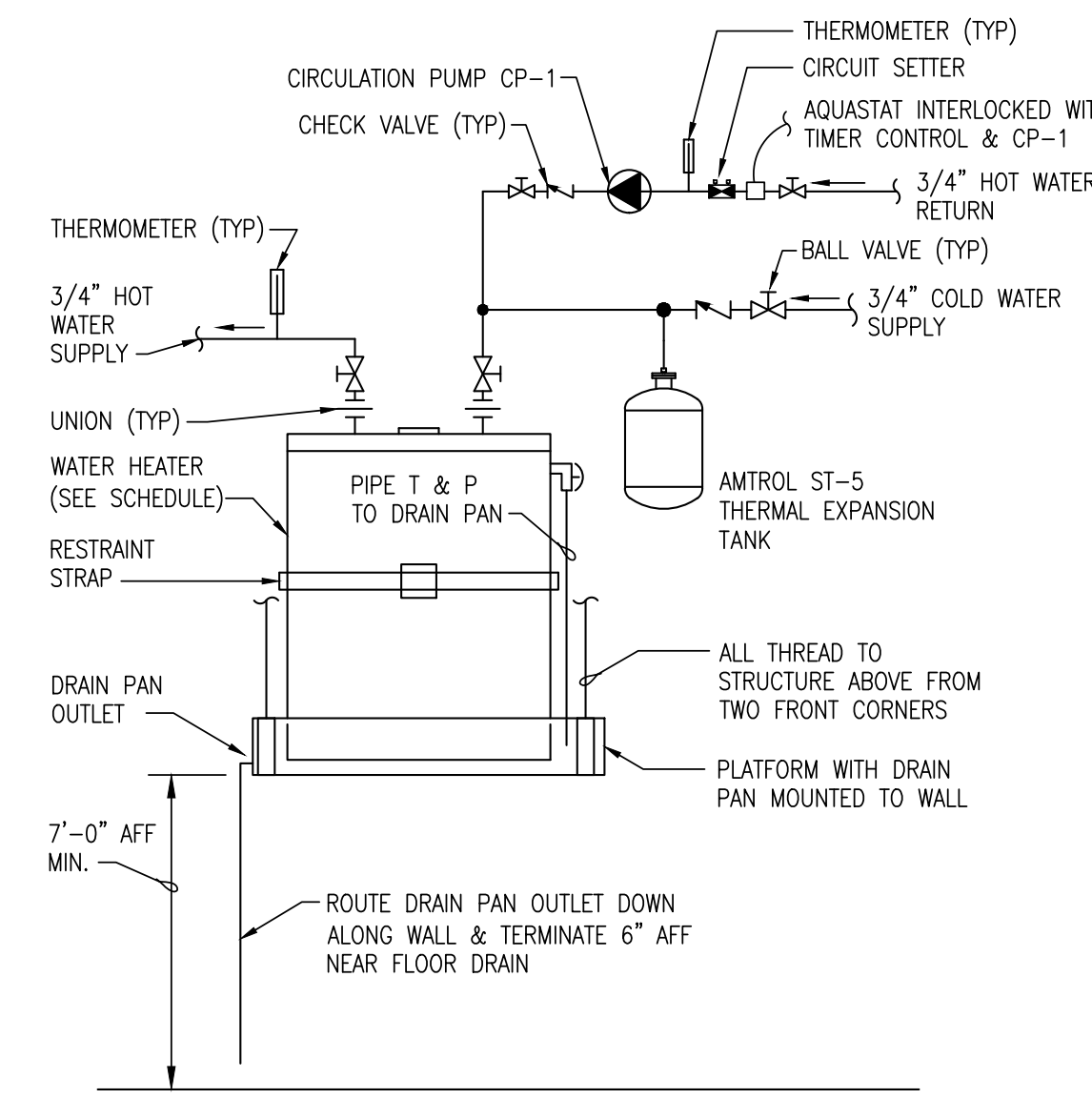
3 INTERIOR CLEANOUT DETAIL
NOT TO SCALE



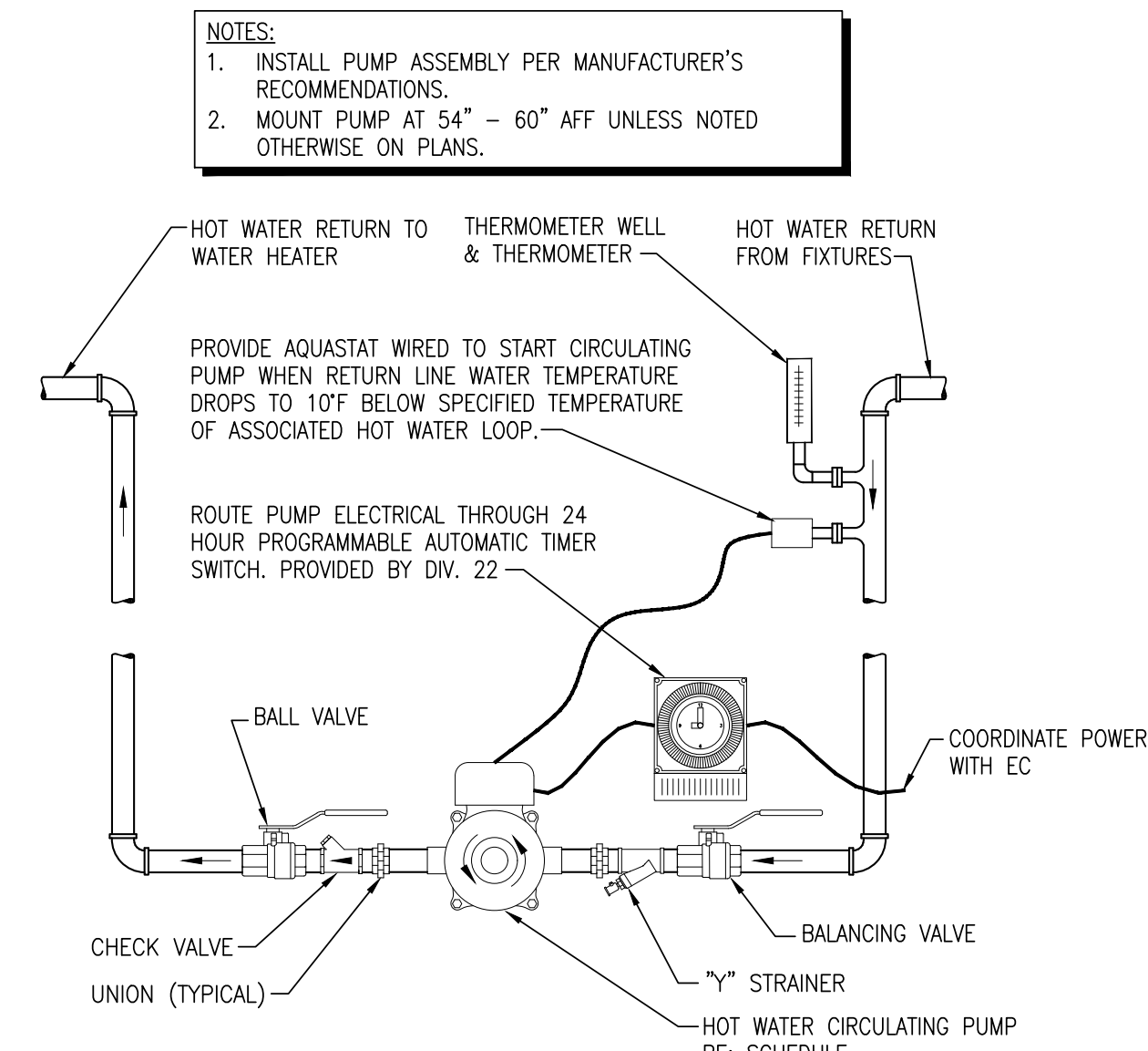
4 EXTERIOR CLEANOUT DETAIL
NOT TO SCALE



5 LAVATORY OR SINK W/MIXING VALVE DETAIL
NOT TO SCALE

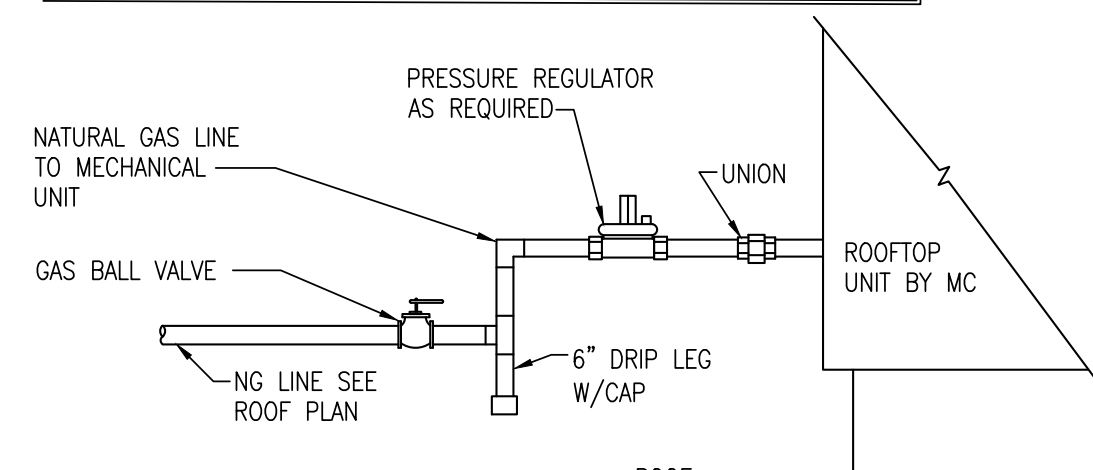


6 ELECTRIC WATER HEATER DETAIL
NOT TO SCALE

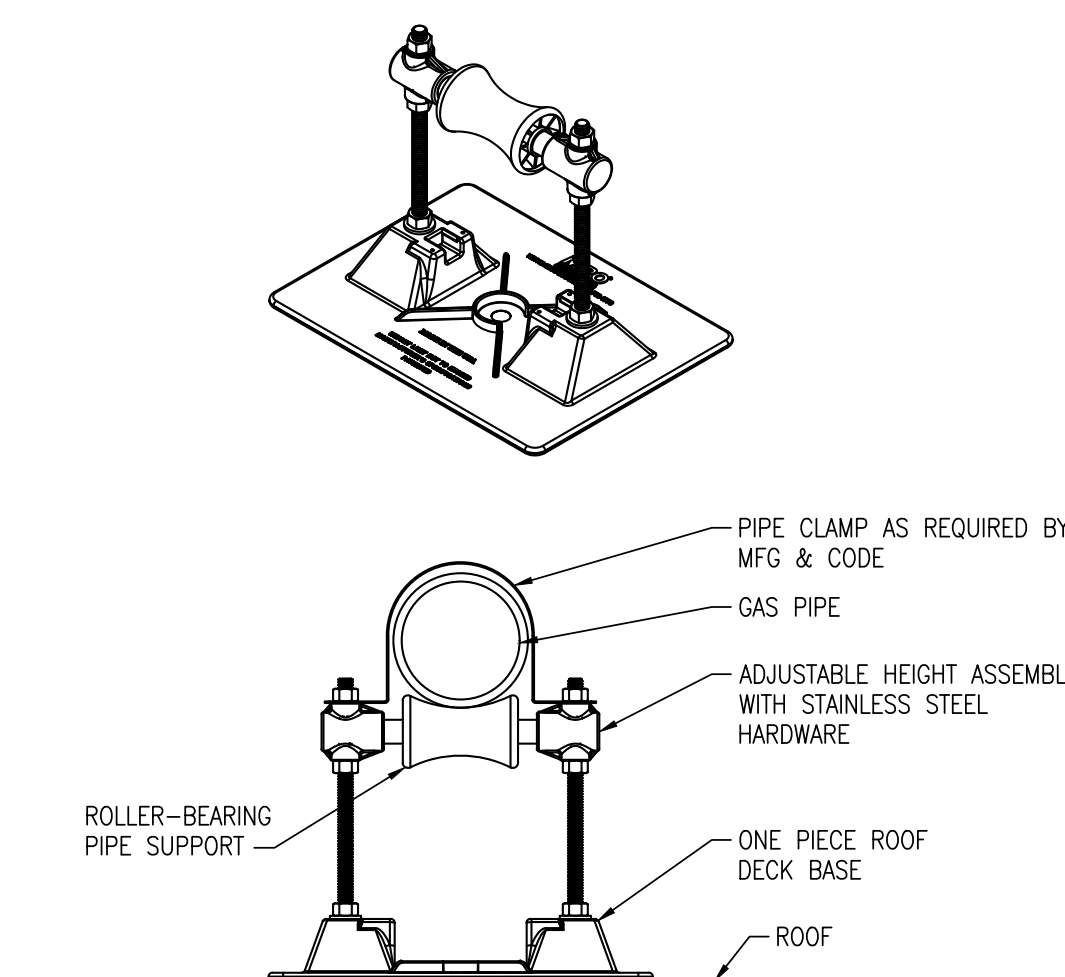


7 HW RECIRCULATION PUMP DETAIL
NOT TO SCALE

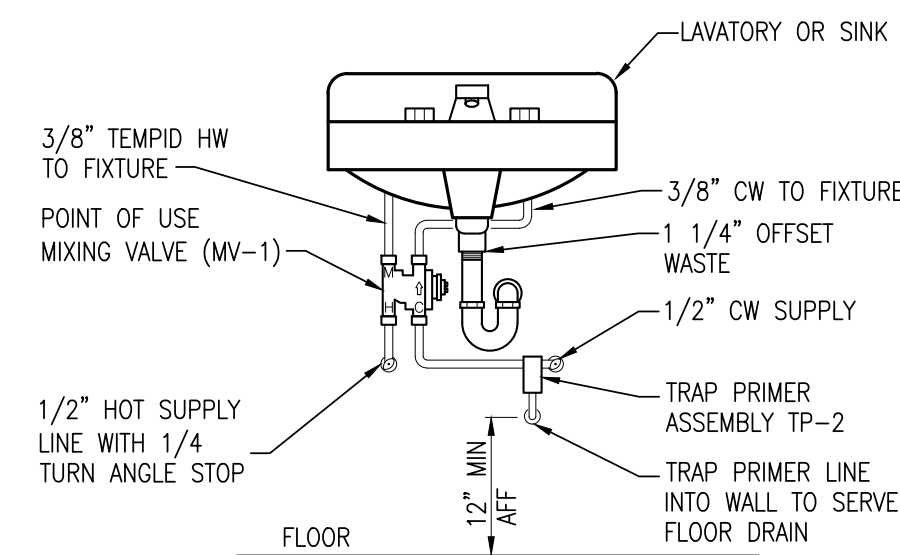
- NOTES:**
1. PROVIDE GAS REGULATOR VENT PROTECTOR. INSTALL REGULATOR PER MANUFACTURER'S RECOMMENDATIONS.
 2. COORDINATE DISTANCE BETWEEN PRESSURE REGULATOR AND GAS-FIRED EQUIPMENT WITH EQUIPMENT MANUFACTURER. COORDINATE FINAL CONNECTION TO UNIT WITH MC.
 3. PROVIDE ROOF PIPE SUPPORTS FOR NATURAL GAS PIPING.
 4. PIPING ABOVE GRADE SHALL BE SCHEDULE 40 BLACK IRON. REFER TO SPECIFICATIONS FOR PAINTING PIPING YELLOW.



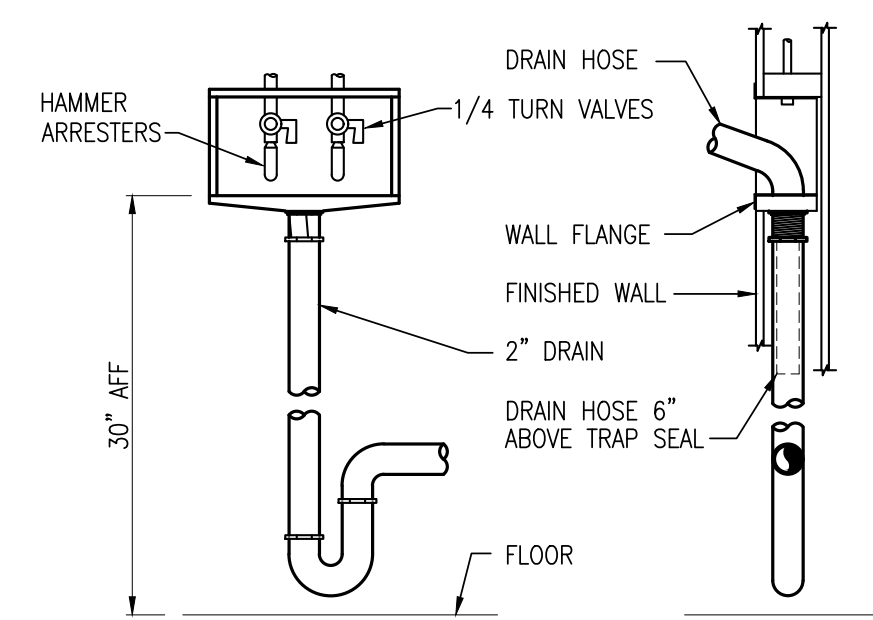
8 RTU GAS CONNECTION DETAIL
NOT TO SCALE



10 ROOF PIPE SUPPORT DETAIL
NOT TO SCALE

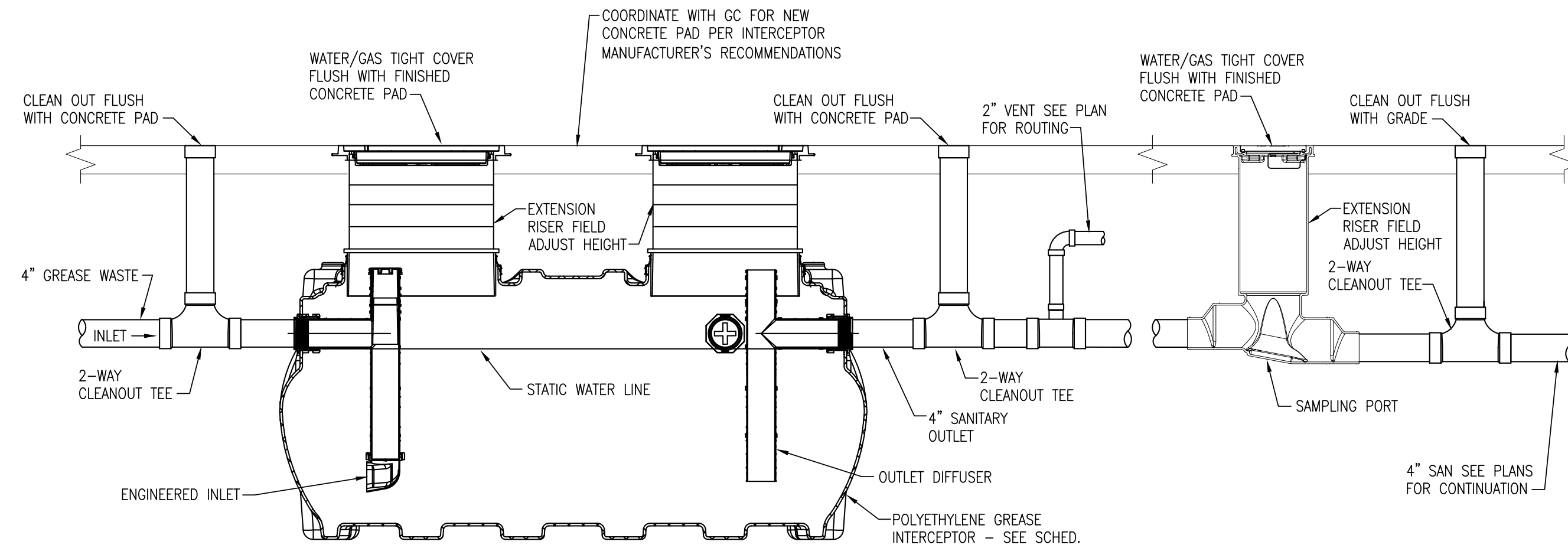


11 LAVATORY W/ TRAP PRIMER DETAIL
NOT TO SCALE

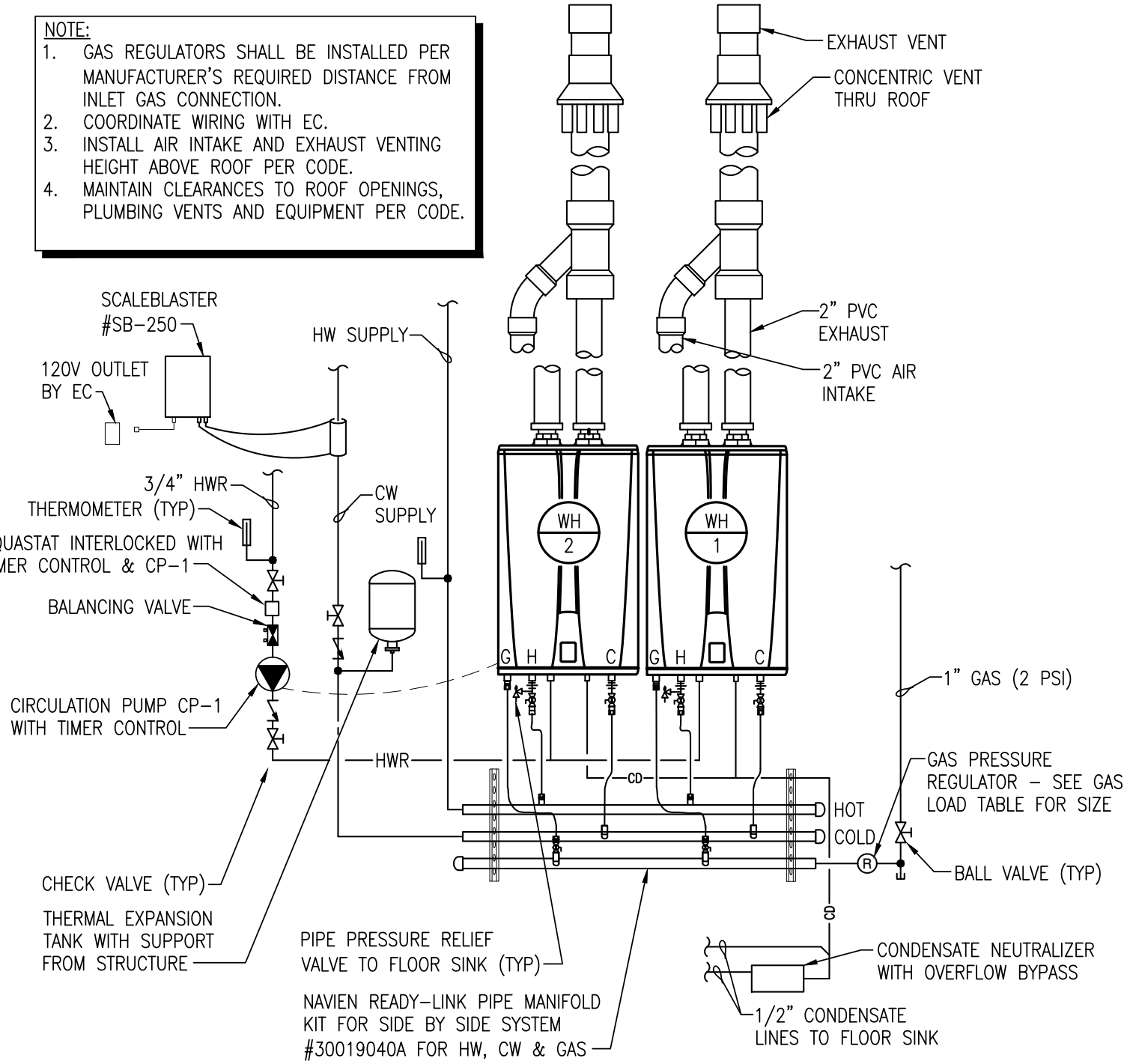


12 LAUNDRY BOX DETAIL
NOT TO SCALE

Salas O'Brien
2900 S. Telephone Road, Suite 120
Moore, OK 73160
Salas O'Brien Registration: CA# 7058
Expiration Date: 6/30/2025
Salas O'Brien Project Number: 2450-70304-00

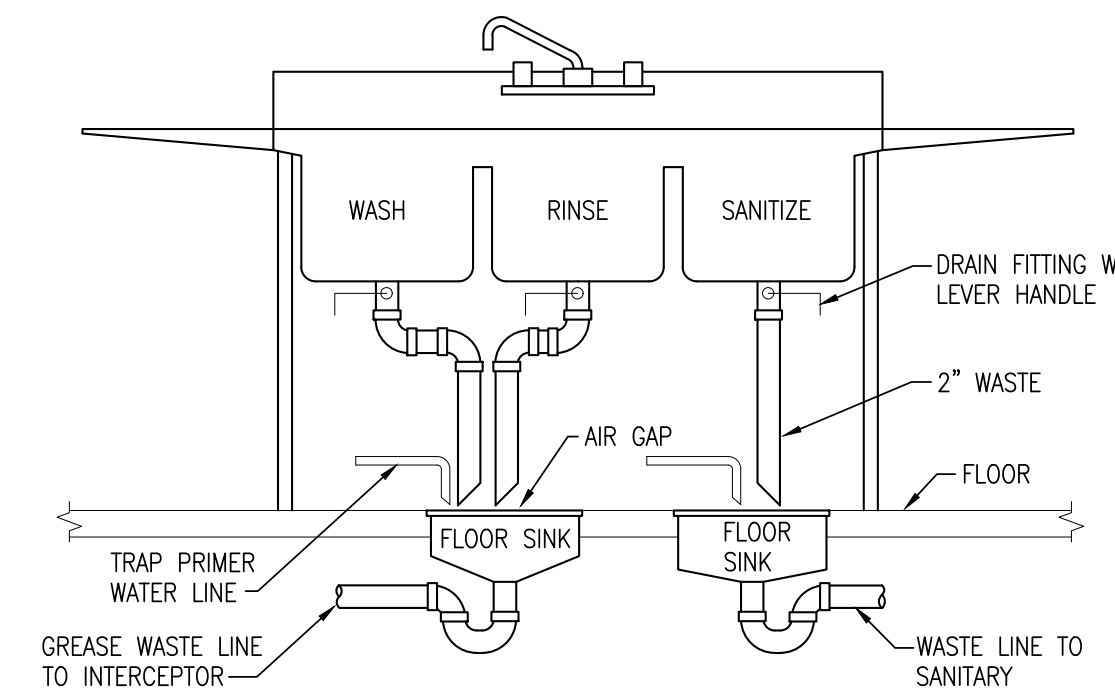


14 EXTERIOR GREASE INTERCEPTOR WITH SAMPLING PORT DETAIL
NOT TO SCALE



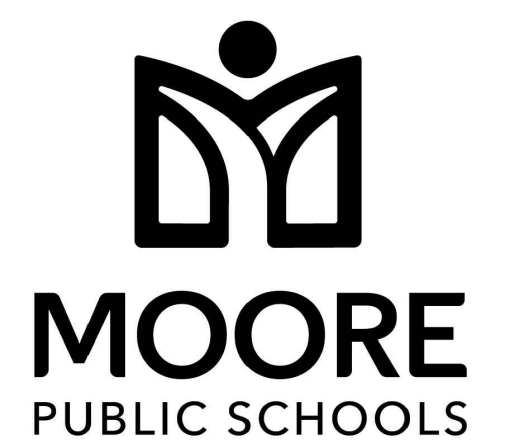
13 DUAL TANKLESS GAS WATER HEATERS DETAIL
NOT TO SCALE

- NOTES:
- COORDINATE SINK INSTALLATION WITH KITCHEN EQUIPMENT SUPPLIER.
 - PROVIDE COPPER DWV PIPING FOR SINK DRAIN PIPING.



15 3 COMPARTMENT SINK DRAIN DETAIL
NOT TO SCALE

KS	drawn by
KP	checked by
OCTOBER 2024	date
	revisions



CHILD CARE FACILITY
201 N. EASTERN AVE.

sheet no:

P502



2800 S. Telephone Road, Suite 120
Moore, OK 73160
Salas O'Brien Registration: CA# 7058
Expiration Date: 6/30/2025
Salas O'Brien Project Number: 2450-70304-00

OWNERSHIP USE OF DOCUMENTS:
AGP EXPRESSLY RESERVES ITS COPYRIGHT AND OTHER PROPERTY RIGHTS OF ALL PLANS AND DRAWINGS DESIGNED AND/OR PRODUCED. PLANS AND DRAWINGS ARE NOT TO BE REPRODUCED IN ANY FORM OR MANNER WITHOUT THE EXPRESSED WRITTEN CONSENT OF AGP.

GAS LOAD TABLE					
MARK	INPUT (MBH)	REQUIRED PRESSURE	REQUIRED REGULATOR	SYSTEM PRESSURE	NOTES
RTU-1	65	7"	MAXITROL 325-3LB	2 PSI	1,3,4,5
RTU-2	108	7"	MAXITROL 325-3LB	2 PSI	1,3,4,5
RTU-3	65	7"	MAXITROL 325-3LB	2 PSI	1,3,4,5
RTU-4	108	7"	MAXITROL 325-3LB	2 PSI	1,3,4,5
RTU-5	180	7"	MAXITROL 325-5LB	2 PSI	1,3,4,5
RTU-6	65	7"	MAXITROL 325-3LB	2 PSI	1,3,4,5
RTU-7	180	7"	MAXITROL 325-5LB	2 PSI	1,3,4,5
RTU-8	180	7"	MAXITROL 325-5LB	2 PSI	1,3,4,5
RTU-9	108	7"	MAXITROL 325-3LB	2 PSI	1,3,4,5
RTU-10	108	7"	MAXITROL 325-3LB	2 PSI	1,3,4,5
RTU-11	180	7"	MAXITROL 325-5LB	2 PSI	1,3,4,5
RTU-12	108	7"	MAXITROL 325-3LB	2 PSI	1,3,4,5
RTU-13	180	7"	MAXITROL 325-5LB	2 PSI	1,3,4,5
RTU-14	XXX	7"	MAXITROL 325-5LB	2 PSI	1,3,4,5
RTU-15	65	7"	MAXITROL 325-3LB	2 PSI	1,3,4,5
RTU-16	65	7"	MAXITROL 325-3LB	2 PSI	1,3,4,5
MAU-1	XXX	7"	MAXITROL 325-5LB	2 PSI	1,3,4,5
WH-1	199.9	7"	MAXITROL 325-5L	2 PSI	1,2,5
WH-2	199.9	7"	MAXITROL 325-5L	2 PSI	1,2,5
WH-3	199.9	7"	MAXITROL 325-5L	2 PSI	1,2,5
WH-4	199.9	7"	MAXITROL 325-5L	2 PSI	1,2,5
KITCHEN	238	10"	MAXITROL 325-5L	2 PSI	1,2,5
DRYER	50	7"	MAXITROL 325-3L	2 PSI	1,2,5
GEN SET	377	10"	MAXITROL 325-5L	2 PSI	1,2,5
TOTAL LOAD	3230 MBH				

NOTES:

- INSTALL AND VENT REGULATOR PER MANUFACTURER'S RECOMMENDATIONS.
- PROVIDE VENT LIMITING DEVICE FOR INDOOR REGULATORS EQUIPPED WITH INTEGRAL VENT LIMITING GRIFICE MODEL 12A09 OR 12A39.
- COORDINATE WITH MECHANICAL CONTRACTOR FOR EQUIPMENT LOCATIONS AND REQUIRED CONNECTION.
- PROVIDE VENT PROTECTOR DEVICE FOR OUTDOOR REGULATORS MODEL 13A15 OR 13A15-5.
- GAS SYSTEM DESIGN FOR INITIAL METER OUTLET PRESSURE OF 2 PSIG WITH PRESSURE DROP OF 1 PSIG AND TOTAL LENGTH OF 450 FEET.

PLUMBING KITCHEN EQUIPMENT SCHEDULE							
ITEM	DESCRIPTION	INDIRECT DRAIN	DIRECT DRAIN	VENT	CW	HW	GAS
3	MOP SINK	-	2"	1 1/2"	1/2"	1/2"	-
5	WASHER BY OWNER	-	2"	1 1/2"	1/2"	1/2"	-
6	DRYER BY OWNER	-	-	-	-	-	1/2" 50 MBH
8	HAND SINK	-	2"	1 1/2"	1/2"	1/2"	-
9	CLEAN DISHTABLE	2"	-	-	-	-	-
11	DISHWASHER	2"	-	-	1/2"	1/2"	-
12	SOILED DISHTABLE	2"	-	-	3/4"	3/4"	-
13	HOSE REEL	-	-	-	1/2"	1/2"	-
14	SOAK SINK	2"	-	-	-	-	-
24	PREP TABLE	2"	-	-	1/2"	1/2"	-
25	FOOD ALLERGY WORKTABLE	2"	-	-	1/2"	1/2"	-
33	CONNECTION OVEN	-	-	-	-	-	(2) 3/4" 55 MBH
34	HOTPLATE COUNTERTOP	-	-	-	-	-	3/4" 128 MBH
35	KETTLE	2"	-	-	1/2"	1/2"	-
36	CONNECTION STEAMER	3/4" x2	-	-	3/4" x2	-	-
45	ICEMAKER	3/4"	-	-	3/4"	-	-
47	MILK COOLER	3/4"	-	-	-	-	-
48	SERVING COUNTER	2"	-	-	1/2"	-	-
49	COLD FOOD WELL	3/4"	-	-	-	-	-
51	HOT FOOD WELL	3/4"	-	-	-	-	-

EQUIPMENT LISTED PROVIDED BY KITCHEN EQUIPMENT CONTRACTOR (KEC). COORDINATE WITH KEC FOR REQUIRED CONNECTIONS.

GAS WATER HEATER SCHEDULE									
MARK	LOCATION	TEMPERATURE RISE	FLOW RATE GAL/MIN	CAPACITY (GALLONS)	MBH INPUT MAX	AIR INTAKE	FLUE EXHAUST	MANUFACTURER & MODEL NO.	NOTES
WH 1	MEP/STORAGE RM 434	(50F - 120F) 70F	5	TANKLESS	199.9	2"	2"	NAVIEN NPE-240A	ALL
WH 2	MEP/STORAGE RM 434	(50F - 120F) 70F	5	TANKLESS	199.9	2"	2"	NAVIEN NPE-240A	ALL
WH 3	MEP/STORAGE RM 434	(50F - 120F) 70F	5	TANKLESS	199.9	2"	2"	NAVIEN NPE-240A	ALL
WH 4	MEP/STORAGE RM 434	(50F - 120F) 70F	5	TANKLESS	199.9	2"	2"	NAVIEN NPE-240A	ALL
WH 5	MEP/STORAGE RM 434	(50F - 120F) 70F	5	TANKLESS	199.9	2"	2"	NAVIEN NPE-240A	ALL

NOTES:

- INSTALL AND VENT PER MANUFACTURER'S RECOMMENDATIONS.
- COORDINATE POWER SUPPLY WITH ELECTRICAL CONTRACTOR. POWER SUPPLY TO UNIT 120V, 2 AMP (GFCI OUTLET).
- PROVIDE AMTROL ST-12 THERMAL EXPANSION TANK ON COLD WATER LINE. REFER TO DETAILS SHEET P501.
- PROVIDE CLEAR WATER ENVIRO TECHNOLOGIES SCALEBLASTER MODEL SB-250 ELECTRONIC DESCALER. COORDINATE 120 VOLT OUTLETS WITH EC.
- PROVIDE CIRCULATION PUMP WIRING FROM WATER HEATERS. COORDINATE POWER CONNECTIONS WITH EC.
- PROVIDE NAVIEN CONDENSATE NEUTRALIZER KIT AND OVERFLOW BY-PASS PIPING TO FLOOR SINK PER MANUFACTURER'S RECOMMENDATIONS.
- PROVIDE ONE COMMUNICATION CABLE FOR WH-1 / WH-2 AND TWO CABLES FOR WH-3, WH-4 & WH-5.
- PROVIDE NAVIEN READY-LINK WALL MOUNT PIPING MANIFOLD SYSTEM FOR WATER HEATERS.
- PROVIDE NAVIEN EXHAUST/INTAKE CONCENTRIC VENT KIT THRU ROOF.
- SEE DETAIL 13/P502 FOR MORE INFORMATION.

ELECTRIC WATER HEATER SCHEDULE									
MARK	LOCATION	TEMPERATURE RISE	CAPACITY GALLONS	AMPS	ELEMENT KW	VOLTAGE	PHASE	MANUFACTURER & MODEL NO.	NOTES
EW 1	ELEC RM IN SAFEROOM	70 DEG @ 25 GPH	20	22	4.5	208	1	A.O. SMITH DEL-20	ALL

NOTES:

- INSTALL PER MANUFACTURER'S RECOMMENDATIONS.
- WATER HEATER OUTLET TEMPERATURE SET TO 120°F. VERIFY TEMPERATURE WITH OWNER.
- PROVIDE AMTROL ST-5 THERMAL EXPANSION TANK ON COLD WATER LINE TO WATER HEATER.
- PROVIDE HOLD RITE WALL SUPPORT PLATFORM MODEL 50-SWHP-W & RESTRAINT STRAP FOR WATER HEATER.
- COORDINATE WIRING WITH E.C.
- SEE DETAIL 6/P501 FOR MORE INFORMATION.

CIRCULATION PUMP SCHEDULE										
MARK	MAXIMUM WORKING PRESSURE	MAXIMUM OPERATING TEMP (°F)	MOTOR				FLANGE SIZE (INCHES)	MATERIAL	MANUFACTURER & MODEL NO.	NOTES
			ELECTRICAL CHAR	F.L. AMPS	HP	RPM				
CP 1	150 PSI	225	115/60/1	3.5	1/6	VARIES	3/4"	S.S.	BELL & GOSSETT EDCOIRC+ 20-18	
CP 2	150 PSI	225	115/60/1	3.5	1/6	VARIES	3/4"	S.S.	BELL & GOSSETT EDCOIRC+ 20-18	
CP 3	150 PSI	225	115/60/1	3.5	1/6	VARIES	3/4"	S.S.	BELL & GOSSETT EDCOIRC+ 20-18	

NOTES:

- PROVIDE GRUNDFOS BRONZE 3/4" FLANGE SET.
- DATA: CP-1: 0.5 GPM AT 10 FEET HEAD.
- DATA: CP-2: 1.5 GPM AT 8 FEET HEAD.
- DATA: CP-3: 1 GPM AT 10 FEET HEAD.
- PROVIDE 24 HOUR TIMER AND AQUASTAT - SET TIMER PER OWNER'S REQUIREMENTS.
- COORDINATE WIRING WITH E.C.
- SEE DETAIL 7/P501 FOR MORE INFORMATION.

GREASE INTERCEPTOR SCHEDULE											
MARK	LOCATION	FLOW RATE (GPM)	LIQUID CAP. (GAL)	GREASE CAP. (LBS)	STANDARD CONNECTION LENGTH	DIMENSIONS (INCHES)			MANUFACTURER & MODEL NO.	NOTES	
						WIDTH	HEIGHT	WEIGHT (LBS)			
GI 1	EXTERIOR BELOW GRADE	100	277	1,865	4"	87	33	44	376	SCHIER GB-250	ALL

NOTES:

- INSTALL AND VENT PER MANUFACTURER'S RECOMMENDATION AND LOCAL PLUMBING CODE.
- INSTALL EXTERIOR BELOW GRADE GREASE INTERCEPTOR SO COVERS ARE FLUSH WITH FINISHED CONCRETE. PROVIDE EXTENSION RISER ASSEMBLY AS REQUIRED.
- INSTALL GREASE INTERCEPTOR WITH REQUIRED CLEARANCES FOR ACCESS AND CLEANING.
- PROVIDE SAMPLING PORT SCHIER SV10 WITH EXTENSION RISER DOWNSTREAM OF INTERCEPTOR PER MANUFACTURER'S RECOMMENDATIONS.
- SEE DETAIL 14/P502 FOR ADDITIONAL INFORMATION.

GREASE INTERCEPTOR SIZING
GREASE INTERCEPTOR SIZED TO COMPLY WITH INTERNATIONAL PLUMBING CODE 2018 AND PDI-G101.
FIXTURES DRAINING TO GREASE INTERCEPTOR:
3- COMPARTMENT SINK: WASH AND RINSE BOWLS TO INTERCEPTOR. BOWL SIZE: 20" x 24" x 14" = 6720 CU INCHES x 2 = 13,440 CU INCHES. 13,440 CU INCHES / 231 = 58 GAL x 75% = 43.5 GALLONS
HANDSINKS: 3 FIXTURES X 2 GPM = 6 GPM
PREP SINGLE SINK: 2 FIXTURES: 18" x 18" x 14" = 4,536 CU INCHES x 2 / 231 x 75% = 30 GALLONS
TRENCH DRAIN AT SOUP KETTLE: 16 GALLONS
DISHWASHER: 36 GALLONS
PREP DOUBLE SINK: BOWL SIZE: 18" x 18" x 14" = 4,536 CU INCHES x 2 / 231 x 75% = 30 GALLONS
FLOOR SINKS WITH 2" OUTLET: 4 FIXTURES: 3 GPM x 4 = 12 GPM
TOTAL DRAIN FLOW PER 2 MINUTES = 173.5 GALLONS / 2 MIN = 87 GALLONS
USE INTERCEPTOR SIZED FOR FLOW RATE OF 100 GPM.

PLUMBING FIXTURE SCHEDULE									
MARK	FIXTURE	MANUFACTURER	MODEL	MOUNT	ROUGH-IN SCHEDULE				FITTINGS AND REMARKS
					COLD	HOT	WASTE	VENT	
L-1	LAVATORY ADA	AMERICAN STANDARD	0355.012	WALL	1/2"	1/2"	1 1/2"	1 1/2"	COLOR WHITE. PROVIDE CHICAGO FAUCET 420-ABCP. MCGUIRE HD155A GRID STRAINER, 8902C P-TRAP, LFBV2165SC 1/4 TURN SUPPLY STOPS. TRUEBRO LAV GUARD2 PIPE COVERS. ZURN WALL FIXTURE CARRIER. REFER TO ARCHITECT'S PLANS FOR HEIGHT AND WALL TYPE. INSTALL THERMOSTATIC MIXING VALVE TMV-1 UNDER FIXTURE. SEE DETAIL 5/P501.
WC-1	WATER CLOSET ADA	AMERICAN STANDARD	2257.101	WALL	1 1/4"	-	4"	-	COLOR WHITE. PROVIDE SLOAN ROYAL 111-1.6 SFSM BATTERY OPERATED FLUSH VALVE. PROVIDE BEIMS 1655SCT OPEN FRONT ELONGATED SEAT. EXTERNAL CHECK HINGE, COLOR WHITE. ZURN NARROW WALL CARRIER. REFER TO ARCHITECT'S PLANS FOR HEIGHT AND WALL TYPE. ADA INSTALLATION.
WC-2	WATER CLOSET	AMERICAN STANDARD	2257.101	WALL	1 1/4"	-	4"	-	COLOR WHITE. PROVIDE SLOAN ROYAL 111-1.6 SFSM BATTERY OPERATED FLUSH VALVE. PROVIDE BEIMS 1655SCT OPEN FRONT ELONGATED SEAT. EXTERNAL CHECK HINGE, COLOR WHITE. ZURN NARROW WALL CARRIER. REFER TO ARCHITECT'S PLANS FOR HEIGHT AND WALL TYPE.
S-1	SINK	ELKAY	LRAD1919602	COUNTERTOP	1/2"	1/2"	1 1/2"	1 1/2"	SINGLE BOWL, 6" DEEP, 2 FAUCET HOLES, REAR CENTER DRAIN. PROVIDE ELKAY LK035 DRAIN & ELKAY LK4060Q814 FAUCET. MCGUIRE 8912 P-TRAP & LFBV2165 SUPPLY STOPS. INSTALL MIXING VALVE TMV-1 UNDER SINK.
MS-1	MOP SINK	FIAT	TSB-3000 24x24x12	FLOOR	1/2"	1/2"	3"	1 1/2"	MOLDED STONE, 6" DROP FRONT, SS THRESHOLD. PROVIDE FIAT 832AA HOSE & WALL BRACKET, 889-CC MOP BRACKET, MCG2424 SS WALL GUARDS, PROVIDE T&S BRASS FAUCET B-0665-BSTR. PROVIDE ASSE 1011 APPROVED HOSE CONNECTION VACUUM BREAKER.
EW-1	ELECTRIC WATER COOLER	ELKAY	LZSTLWSSK	WALL	1/2"	-	1 1/2"	1 1/2"	DUAL LEVEL WITH SENSOR WATER BOTTLE FILLING STATION ON LOWER UNIT. VANDAL-RESISTANT, FILTERED, PUSH BUTTON ACTIVATION, 120 VOLT. PVC P-TRAP AND 1/4 TURN SUPPLY STOP. REFER TO ARCHITECT'S PLANS FOR MOUNTING HEIGHT. ADA INSTALLATION.
FD	FLOOR DRAIN	ZURN	ZN415-BZ1-P -VP	FLOOR	-	-	SEE PLANS	-	6" ROUND NICKEL BRONZE STRAINER, CAST IRON BODY ANCHOR FLANGE, CLAMP COLLAR, ADJUSTABLE COLLAR, ADJUSTABLE STRAINER HEIGHT, VANDAL-PROOF SECURED TOP, 1/2" TRAP PRIMER CONNECTION. SEE DETAIL 1/P501.
FS-1	FLOOR SINK	ZURN	ZN1910-K-2 -23	FLOOR	-	-	3"	-	8"x8" TOP, 6" DEEP. CAST IRON BODY WITH WHITE A.R.E INTERIOR, ANCHOR FLANGE, 1/2" GRATE WITH NICKEL BRONZE FINISH & SEDIMENT BUCKET.
FS-2	FLOOR SINK	ZURN	ZS1901-K-2-23	FLOOR	-	-	4"	-	12"x12" TOP, 8" DEEP. CAST IRON BODY WITH WHITE A.R.E INTERIOR, ANCHOR FLANGE, STAINLESS STEEL FRAME, 1/2" GRATE, & SEDIMENT BUCKET.
FS-3	FLOOR SINK	ZURN	ZS1910-K-P -2-23	FLOOR	-	-	2"	-	8"x8" TOP, 6" DEEP. CAST IRON BODY WITH WHITE A.R.E INTERIOR, ANCHOR FLANGE, 1/2" TRAP PRIMER CONNECTION, STAINLESS STEEL FRAME WITH 1/2" GRATE & SEDIMENT BUCKET.
TD-1	TRENCH DRAIN	IMC/TEDDY	ASFT-1224	FLOOR	-	-	4"	-	12" W x 24" L TRENCH DRAIN. STAINLESS STEEL 6" DEEP, SLOPED BOTTOM TO CENTER 4" OUTLET. PERFORATED BASKET STRAINER. STAINLESS STEEL ADA COMPLIANT BAR GRATE MODEL SG-ADA-1224.
FCO	FLOOR CLEANOUT	ZURN	ZN1400-K-VP	FLOOR	-	-	SEE PLANS	-	ADJUSTABLE, CAST IRON BODY, ANCHOR FLANGE, ABS THREAD PLUG, ROUND SCORiated TOP WITH NICKEL BRONZE FINISH, VANDAL RESISTANT COVER SCREWS.
WCO	WALL CLEANOUT	ZURN	Z1446-VP	WALL	-	-	SEE PLANS	-	CAST IRON CLEANOUT TEE, THREAD ABS PLUG, STAINLESS STEEL ROUND ACCESS COVER WITH VANDAL RESISTANT SECURING SCREW.
ECO	EXTERIOR CLEANOUT	ZURN	Z1474-N-VP	GRADE	-	-	SEE PLANS	-	CAST IRON CLEANOUT ACCESS HOUSING, ANCHOR FLANGE, SECURED GASKETED COVER WITH CLEANOUT FERRULE WITH ABS PLUG. VANDAL PROOF COVER SCREWS.
HA-1	HAMMER ARRESTOR	WATTS	LF15M2	PIPE	VARIES	-	-	-	LEAD-FREE DESIGN, PDI WH201 LISTED, MAINTENANCE FREE, INSTALL PER MANUFACTURER'S RECOMMENDATIONS.
TP-1	TRAP PRIMER (ELECTRIC)	PRECISION PLUMBING PRODUCTS	PTS-4	PIPE	3/4"	-	-	-	ELECTRONIC UNIT ENCLOSED IN METAL CABINET WITH 24 HOUR TIMER, SOLENOID VALVE, VACUUM BREAKER, 3/4" CW INLET, HAMMER ARRESTOR & 1/2" OUTLETS, WATER, 120V POWER HARDWIRED. PROVIDE STRAINER PRIOR TO UNIT. COORDINATE 120 VOLT POWER OUTLET WITH EC. SEE DETAIL 1/P501.
TP-2	TRAP PRIMER	PRECISION PLUMBING PRODUCTS	PRO1-ULP500	PIPE	1/2"	-	-	-	UNDER FIXTURE TRAP PRIMER VALVE, CHROME PLATED, 1/2" CW INLET WITH ANGLE STOP, 3/8" OUTLET TO FAUCET, AIR GAP WITH 1/2" OUTLET TO FLOOR DRAIN. WALL ESCUTCHEON. MOUNT MINIMUM 12" ABOVE FLOOR. SEE DETAIL 11/P501.
TMV-1	THERMOSTATIC MIXING VALVE	WATTS	LFMVV-M1	BELOW FIXTURE	1/2"	1/2"	-	-	LEAD FREE MIXING VALVE WITH ADJUSTABLE TEMPERATURE SET-POINT & LOCKABLE, INTEGRAL CHECK STOPS & STRAINERS, 1/2" INLETS & OUTLET. SET OUTLET TEMP AT 105 DEGREES F. ASSE 1070 LISTED.
AP-1	ACCESS PANEL	ACUDOR	UF-5000 14x14 CLSS	WALL	-	-	-	-	14"x14" STEEL, 16 GAGE DOOR & FRAME, 18 GAGE MOUNTING FRAME. CONCEALED HINGE, CYLINDER LOCK & KEY, STAINLESS STEEL FINISH. CONCEALED FASTENING POINTS.
CD-1	CLOTHES DRYER	PROVIDED BY OTHERS	-	FLOOR	-	-	-	-	DRYER INSTALLED BY OTHERS. PC SHALL ROUGH-IN & MAKE FINAL CONNECTIONS. PROVIDE 1/2" DORMANT NATURAL GAS FLEXIBLE GAS LINE WITH BALL VALVE, SWIVEL CONNECTIONS & 36" LENGTH. LOW PRESSURE GAS. COORDINATE WITH UNIT SUPPLIER. 20 MBH GAS LOAD.
WM-1	WASHING MACHINE	PROVIDED BY OTHERS	-	FLOOR	3/4"	3/4"	3"	-	MACHINE INSTALLED BY OTHERS. PC SHALL ROUGH-IN & MAKE FINAL CONNECTIONS. ROUTE DRAIN HOSE TO LAUNDRY BOX DRAIN. CONNECT FLEXIBLE WATER HOSES TO WALL BOX & MACHINE. COORDINATE WITH UNIT SUPPLIER.
LB-1	LAUNDRY BOX	SIOUX CHIEF	696R2313WF	WALL	1/2"	1/2"	2"	1 1/2"	FIRE RATED RECESSED WALL MOUNTED BOX WITH FLANGE, 1/4 TURN BALL VALVES WITH HAMMER ARRESTORS, 3/4" THREADED OUTLETS, DRAIN CONNECTION. COORDINATE INSTALL HEIGHT FOR CLOTHES WASHER.
GVB-1	GAS VALVE BOX	SIOUX CHIEF	696R1020GF	WALL	-	-	-	-	FIRE RATED RECESSED WALL MOUNTED BOX WITH FLANGE, NATURAL GAS 1/4 TURN BALL VALVE, 1/2" THREADED OUTLET. PROVIDE DORMANT FLEXIBLE GAS LINE. COORDINATE INSTALL HEIGHT FOR CLOTHES DRYER GAS CONNECTION

AGP
the Abla Griffin
Partnership L.L.C.

201 N. BROADWAY
SUITE 210
MOORE, OK. 73160
405.735.3477
AGP@theAGP.net
www.theAGP.net

KFC ENGINEERING

STRUCTURAL

SALAS O'BRIEN

MECHANICAL / ELECTRICAL



KS

drawn by

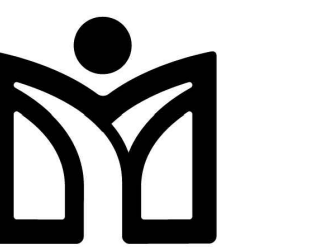
KP

checked by

OCTOBER 2024

date

revisions



MOORE
PUBLIC SCHOOLS

CHILD CARE FACILITY
201 N. EASTERN AVE.

sheet no:

P601

OWNERSHIP USE OF DOCUMENTS:

AGP EXPRESSLY RESERVES ITS
COPYRIGHT AND OTHER PROPERTY
RIGHTS OF ALL PLANS AND DRAWINGS
DESIGNED AND/OR PRODUCED. PLANS
AND DRAWINGS ARE NOT TO BE
REPRODUCED IN ANY FORM OR MANNER
WITHOUT THE EXPRESSED WRITTEN
CONSENT OF AGP.

Salas O'Brien
2900 S. Telephone Road, Suite 120
Moore, OK 73160
Salas O'Brien Registration: CA# 7058
Expiration Date: 6/30/2025
Salas O'Brien Project Number: 2450-70304-00