

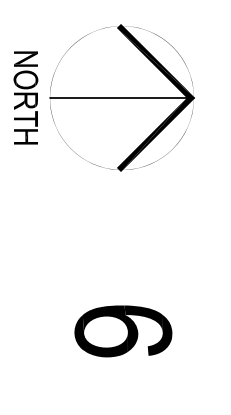
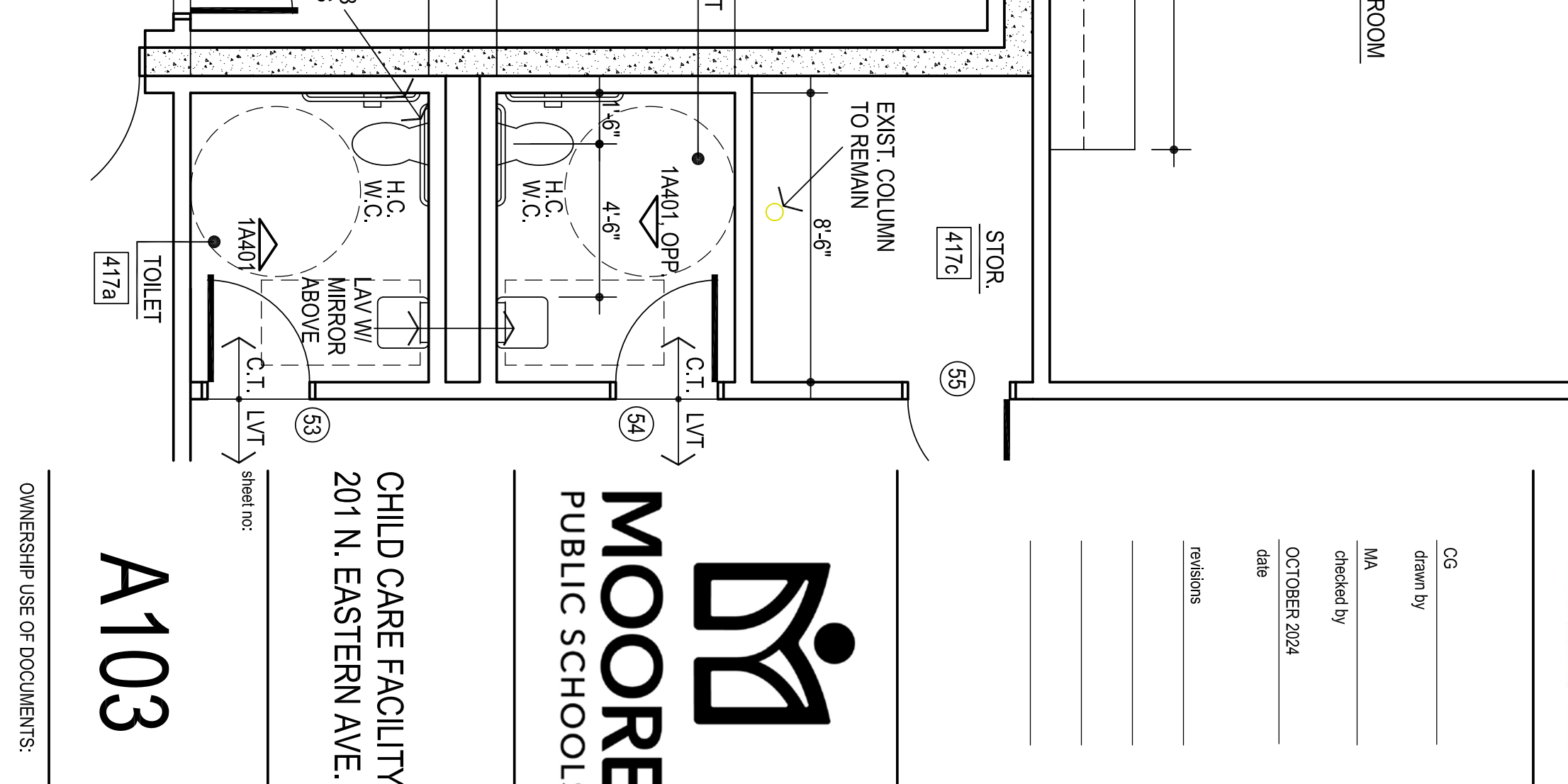
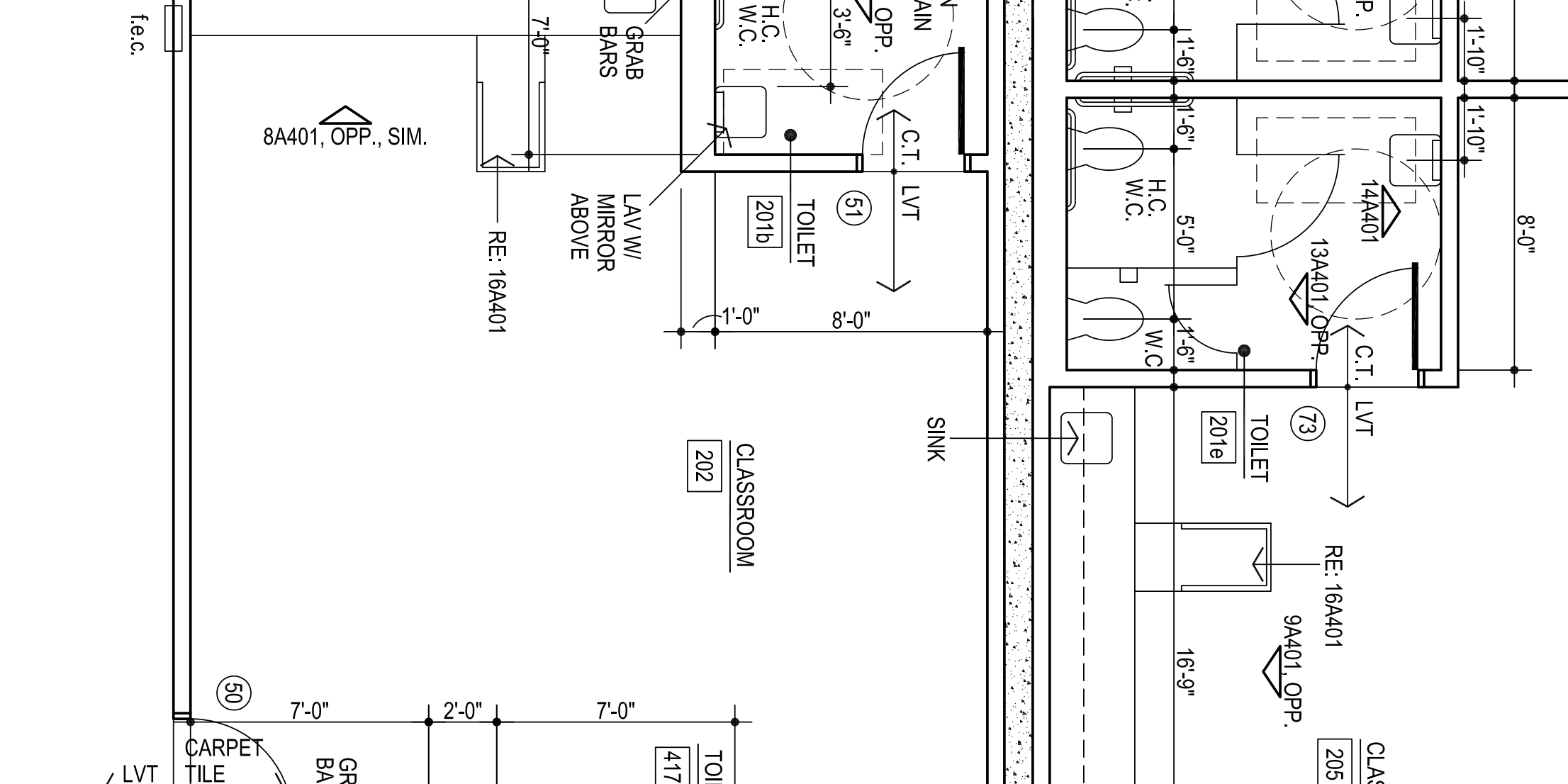
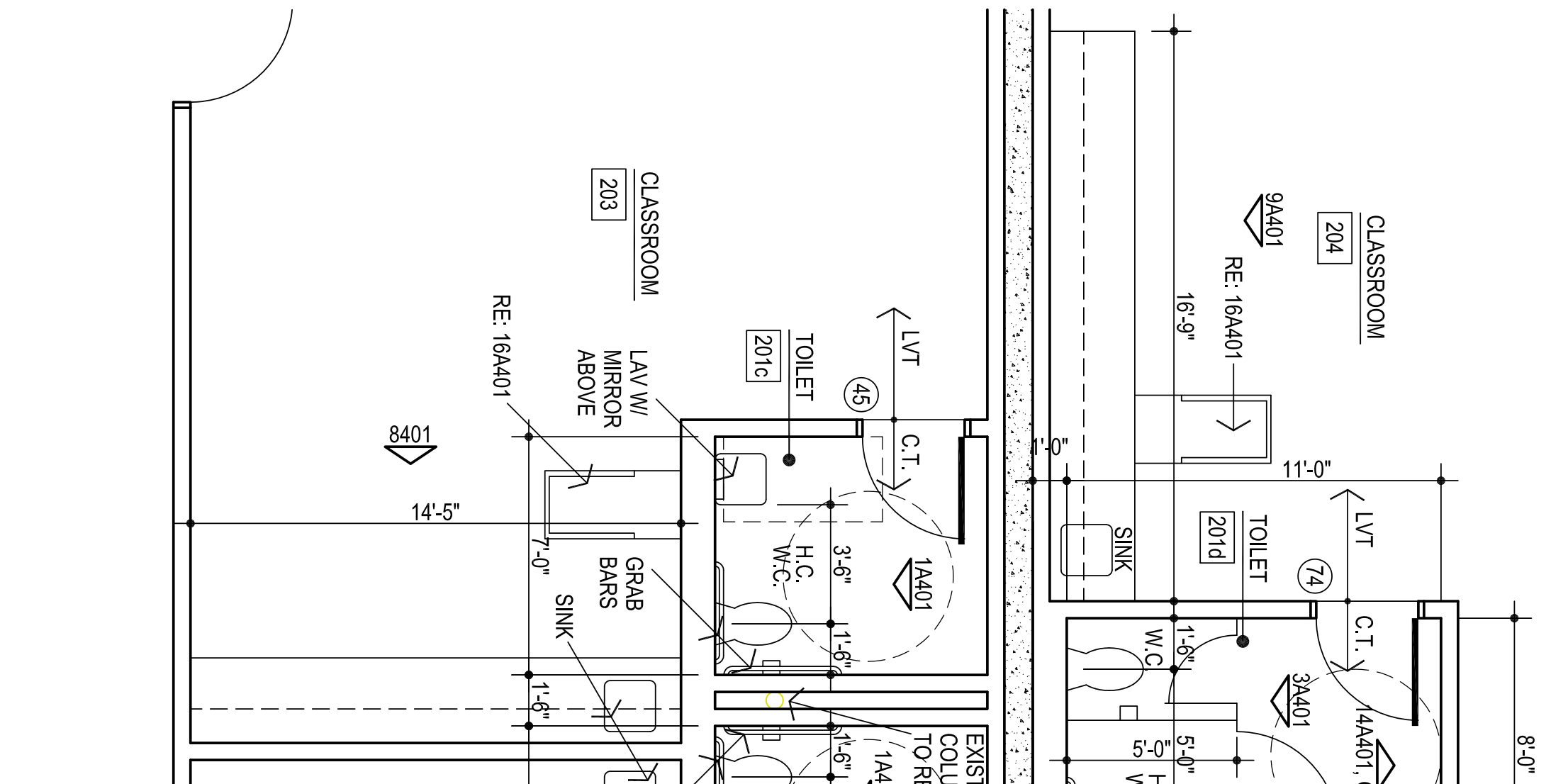
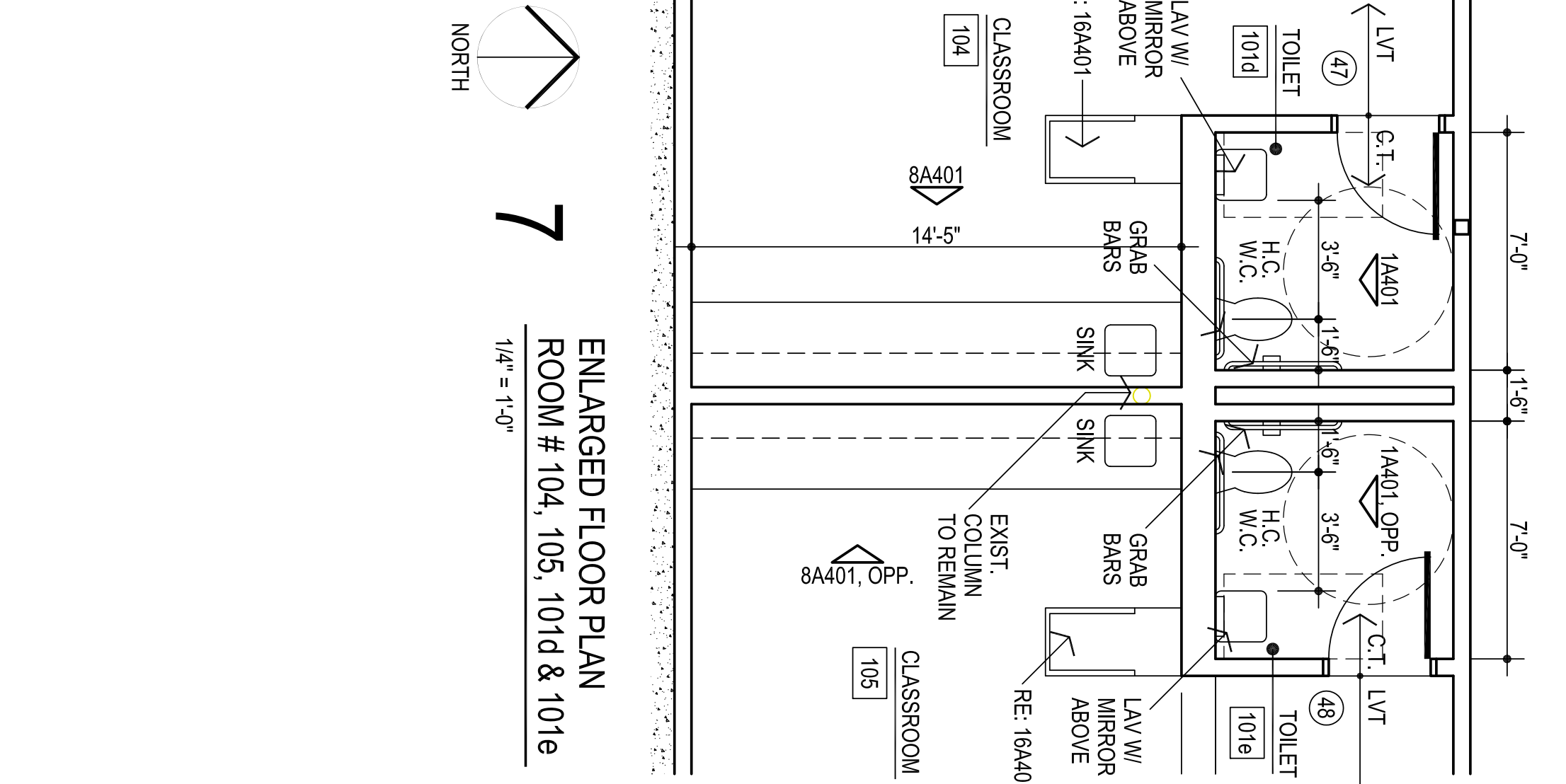
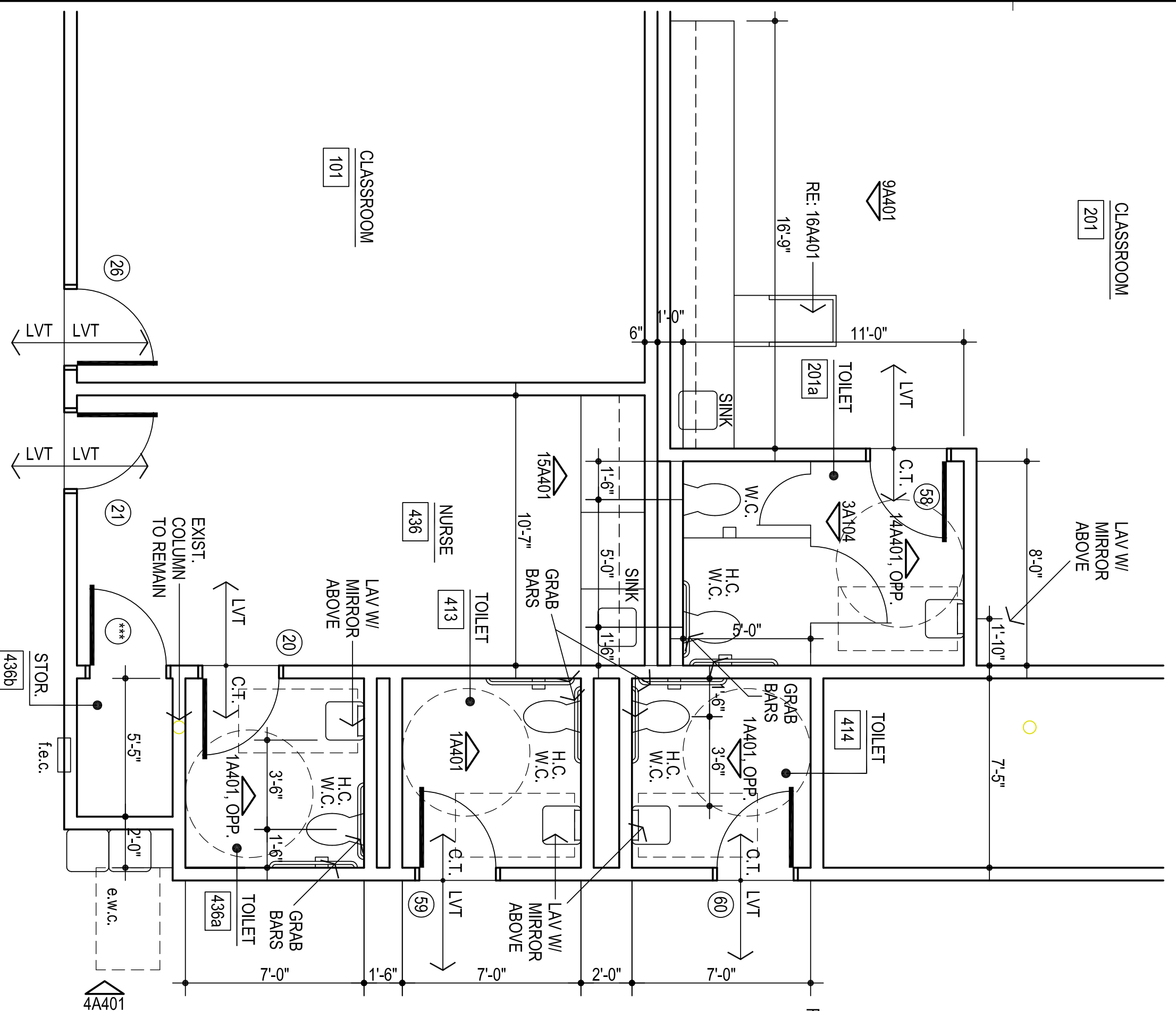
ENLARGED FLOOR PLAN
ROOM # 001 & 001a
1/4" = 1'-0"

ENLARGED FLOOR PLAN
ROOM # 002, 003, 001b & 001c
1/4" = 1'-0"

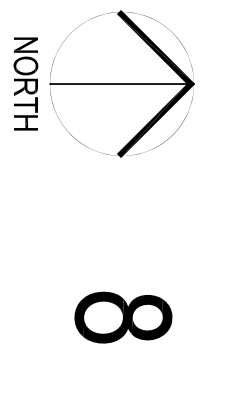
ENLARGED FLOOR PLAN
ROOM # 004, 005, 001d & 001e
1/4" = 1'-0"

ENLARGED FLOOR PLAN
ROOM # 103 & 101c
1/4" = 1'-0"


ENLARGED FLOOR PLAN
ROOM # 101, 102, 101a & 101b
1/4" = 1'-0"




ENLARGED FLOOR PLAN
ROOM # 101, 201, 201a, 413, 414, 436, 436a & 436b
1/4" = 1'-0"



ENLARGED FLOOR PLAN
ROOM # 202, 203, 204, 205, 201b, 201c, 201d, 201e, 417a, 417b & 417c
1/4" = 1'-0"


 the Abia Griffin
 Partnership L.L.C.
 313 S. E. 5th Street
 MOORE, OK, 73160
 ACP@theACPN.net
 www.theACP.net

CEDAR CREEK
 CIVIL
 KFC ENGINEERING
 STRUCTURAL
 SALAS ORBEN
 MECHANICAL/ELECTRICAL


 MOORE
 PUBLIC SCHOOLS

CG
 drawn by
 MA
 checked by
 OCTOBER 2024
 title
 revisions

OWNERSHIP USE OF DOCUMENTS:
 APP EXPRESSLY RESERVES ITS
 COPYRIGHT AND OTHER PROPERTY
 RIGHTS OF ALL PLANS AND DRAWINGS
 DESIGNED AND/OR PRODUCED. PLANS
 AND DRAWINGS ARE NOT TO BE
 REPRODUCED IN ANY FORM OR MANNER
 WITHOUT THE EXPRESS WRITTEN
 CONSENT OF AGP.

A103
 CHILD CARE FACILITY
 201 N. EASTERN AVE.