

CONSTRUCTION DATA (TABLE 603):

CONSTRUCTION TYPE -	E & I-4
TYPE II - B	
BASIC ALLOWABLE AREA -	E - 58,000 S.F. / I-4 - 52,000 S.F. PER FLOOR
ALLOWABLE STORIES -	3 / 3
ACTUAL STORIES -	1 / 1
ACTUAL HEIGHT -	23'-4"

BUILDING SIZES:
BUILDING : 1 STORY @ 32,200 S.F.

STRUCTURAL FIRE PROTECTION (TABLE 601):	0 HOUR
EXTERIOR BEARING WALLS	NONCOMBUSTIBLE
EXTERIOR BEARING WALLS	NONCOMBUSTIBLE
EXTERIOR NONBEARING WALLS	0 HOUR
COLUMNS	0 HOUR
BEAMS	NONCOMBUSTIBLE
PERMANENT PARTITIONS	0 HOUR
FLOOR ASSEMBLIES	0 HOUR
ROOF ASSEMBLIES	0 HOUR
EXTERIOR OPENINGS	N/A

PASSIVE FIRE SAFETY SYSTEM:
PORTABLE FIRE EXTINGUISHERS (REF: SHEETS A104)
TRAVEL DISTANCE = 250'-0" MAX.
ACTUAL MAX. TRAVEL DISTANCE = 170'-0"
DEADEND - 50'-0" MAX.
ACTUAL DEADEND - NONE

ACTIVE FIRE SAFETY SYSTEMS (EXISTING & NEW ADDITION):
FIRE SPRINKLER SYSTEM THROUGHOUT
FIRE ALARM SYSTEM
SMOKE DETECTION
AUTOMATIC AIR HANDLING EQUIP. SHUTDOWN
EXIT LIGHTS/EMERGENCY LIGHTS BATTERY

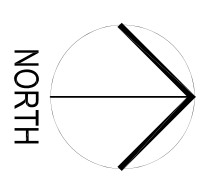
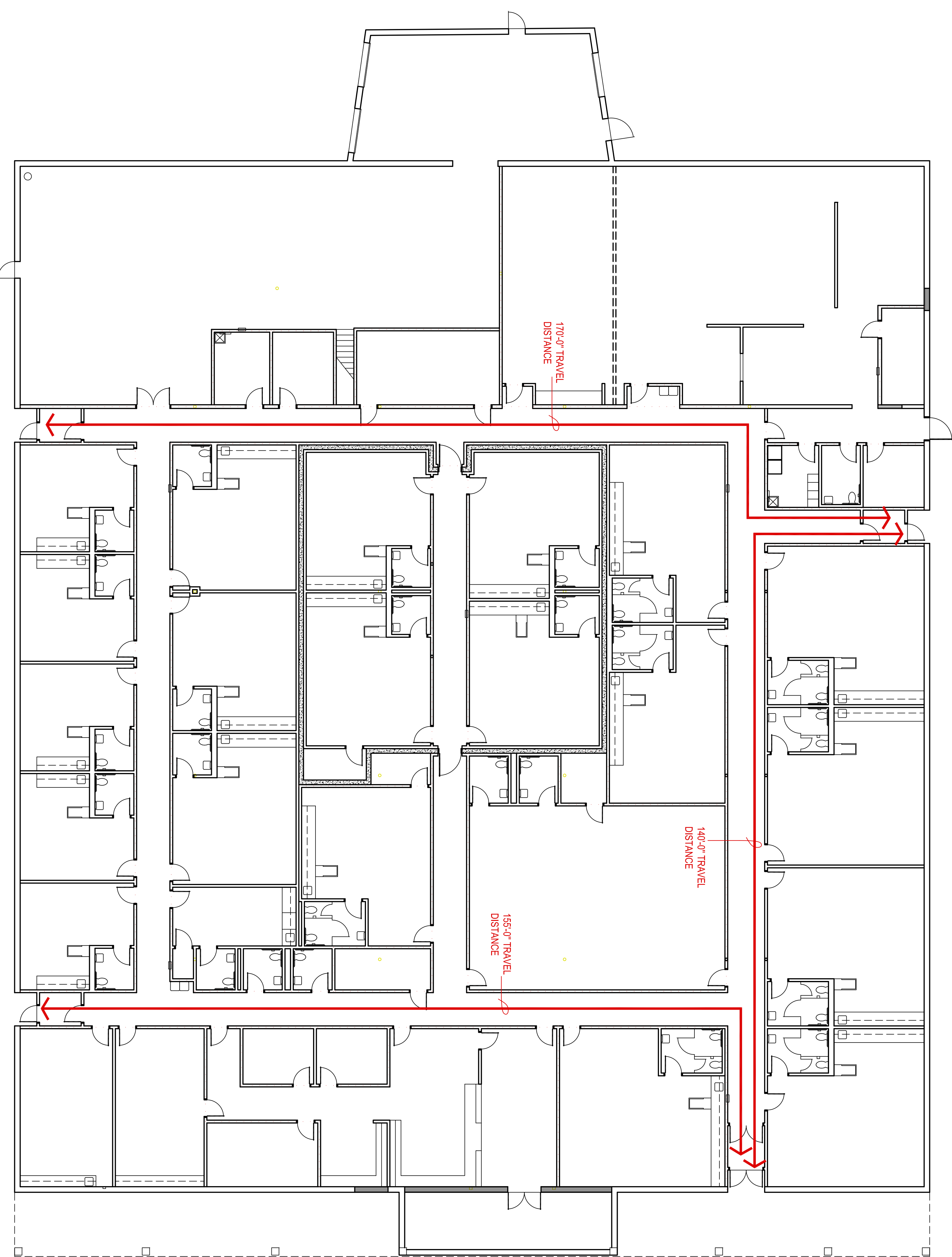
CODES/REGULATIONS USED: (CITY OF MOORE):
2018 IBC - INTERNATIONAL BUILDING CODE
AMERICAN WITH DISABILITIES ACT ACCESSIBILITY GUIDELINES
2020 NATIONAL ELECTRICAL CODE
2018 INTERNATIONAL PLUMBING CODE
2018 INTERNATIONAL MECHANICAL CODE
2018 INTERNATIONAL FIRE CODE
2009 ENERGY CONSERVATION CODE
ASSOCIATED SUPPLEMENTS TO EACH CODE

OCCUPANT LOAD (TABLE 1004.1.1):
BUILDING RENOVATION: 278 CHILDREN
12 ADMIN / STAFF
40 TEACHERS
330 TOTAL OCCUPANTS

EGRESS WIDTH:
BUILDING RENOVATION: REQUIRED 66"
BUILDING RENOVATION: PROVIDED 432"

PLUMBING FIXTURES (TABLE 2902.1):	
TOTAL OCCUPANT LOAD (INSTITUTIONAL) = 330	
TOTAL REQUIRED:	TOTAL PROVIDED
WATER CLOSETS = 22	WATER CLOSETS = 34
LAVATORIES = 22	URINALS = 0
DRINKING FOUNTAINS = 4	LAVATORIES = 49
SERVICE SINKS = 1	DRINKING FOUNTAINS = 4
	SERVICE SINKS = 2

DEVOTES 1-HR. RATED PARTITIONS CLOSE-OUT TO
BOTTOM OF DECKING - CLOSE-OUT PARTITIONS TO
BE CMU WHERE INDICATED ON STRUCTURAL FOR
LOAD BEARING CONDITIONS. ALL OTHER INDICATED
LOCATIONS TO BE CONSTRUCTED OF 1 LAYER
OF 5/8" FIRE RATED GYP. BOARD EACH SIDE
ON 6" METAL STUDS @ 16" O.C. STAGGER ALL
JOINTS & PROVIDE FIRE TAPE SEAL ALL PENETRATIONS
W/ CONTINUOUS FIRE STOPPING INSULATION
& OR SEALANT.



1 LIFE SAFETY PLAN
3/32" = 1'-0"