

CONSTRUCTION DATA (TABLE 603):

CONSTRUCTION TYPE -	E & I-4
TYPICAL TYPE -	TYPE II - B
BASIC ALLOWABLE AREA -	E - 58,000 S.F. / I-4 - 52,000 S.F. PER FLOOR
ALLOWABLE STORIES -	3 / 3
ACTUAL STORIES -	1 / 1
ACTUAL HEIGHT -	23'-4"

BUILDING SIZES:  
BUILDING : 1 STORY @ 32,200 S.F.

STRUCTURAL FIRE PROTECTION (TABLE 601):

EXTERIOR BEARING WALLS	0 HOUR
EXTERIOR BEARING WALLS	NONCOMBUSTIBLE
EXTERIOR NONBEARING WALLS	NONCOMBUSTIBLE
COLUMNS	0 HOUR
BEAMS	0 HOUR
PERMANENT PARTITIONS	NONCOMBUSTIBLE
FLOOR ASSEMBLIES	0 HOUR
ROOF ASSEMBLIES	0 HOUR
EXTERIOR OPENINGS	N/A

PASSIVE FIRE SAFETY SYSTEM:  
PORTABLE FIRE EXTINGUISHERS (REF: SHEETS A104)  
TRAVEL DISTANCE = 250'-0" MAX.  
ACTUAL MAX. TRAVEL DISTANCE = 170'-0"  
DEADEND - 50'-0" MAX.  
ACTUAL DEADEND - NONE

ACTIVE FIRE SAFETY SYSTEMS (EXISTING & NEW ADDITION):  
FIRE SPRINKLER SYSTEM THROUGHOUT  
FIRE ALARM SYSTEM  
SMOKE DETECTION  
AUTOMATIC AIR HANDLING EQUIP. SHUTDOWN  
EXIT LIGHTS/EMERGENCY LIGHTS BATTERY

CODES/REGULATIONS USED: (CITY OF MOORE):  
2018 IBC - INTERNATIONAL BUILDING CODE  
AMERICAN WITH DISABILITIES ACT ACCESSIBILITY GUIDELINES  
2020 NATIONAL ELECTRICAL CODE  
2018 INTERNATIONAL PLUMBING CODE  
2018 INTERNATIONAL MECHANICAL CODE  
2018 INTERNATIONAL FIRE CODE  
2009 ENERGY CONSERVATION CODE  
ASSOCIATED SUPPLEMENTS TO EACH CODE

OCCUPANT LOAD (TABLE 1004.1.1.1):

BUILDING RENOVATION: 278 CHILDREN  
12 ADMIN / STAFF  
40 TEACHERS  
330 TOTAL OCCUPANTS

EGRESS WIDTH:

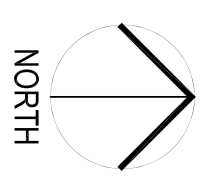
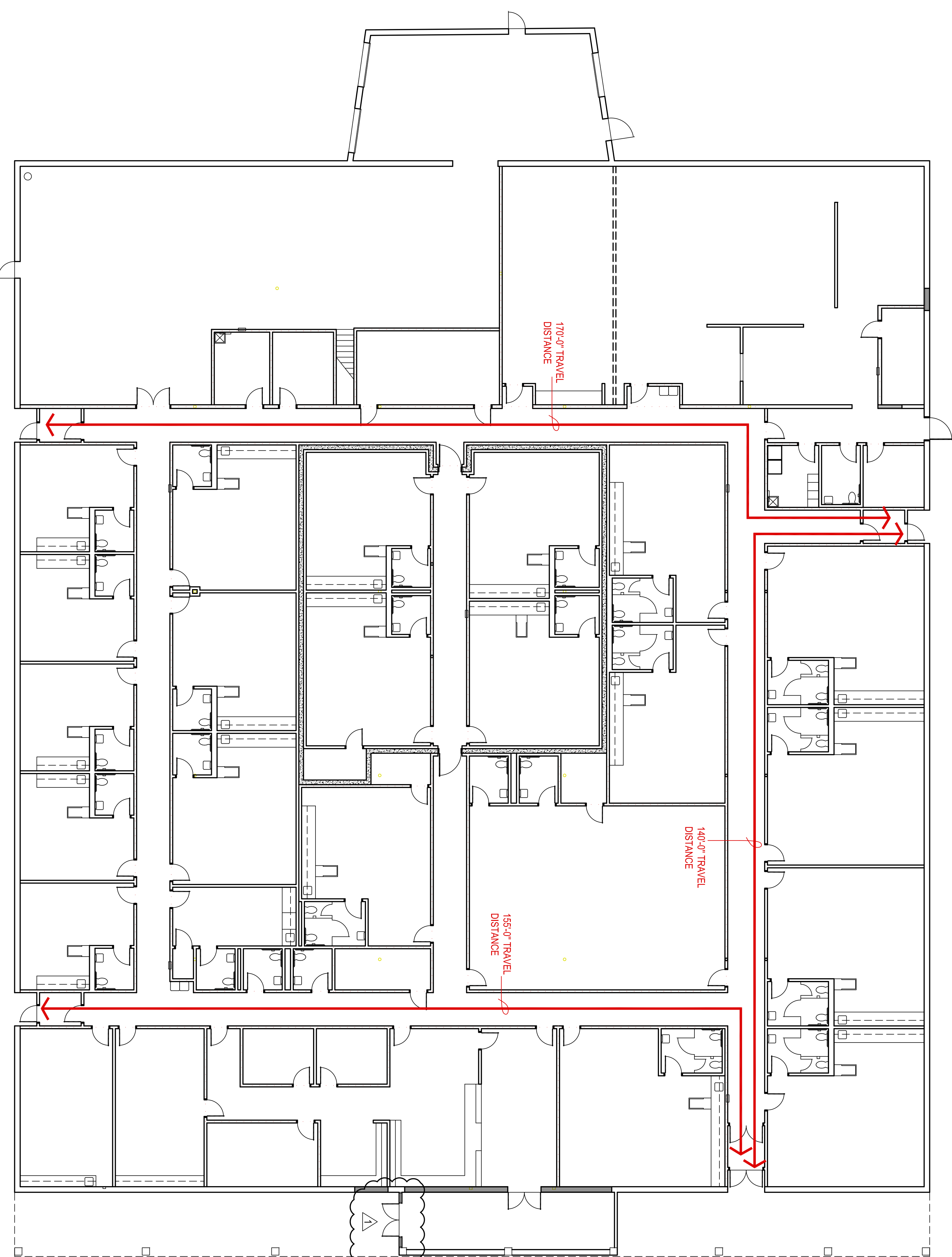
BUILDING RENOVATION: REQUIRED 66"  
BUILDING RENOVATION: PROVIDED 432"

PLUMBING FIXTURES (TABLE 2902.1):

TOTAL OCCUPANT LOAD ( INSTITUTIONAL ) = 330

TOTAL REQUIRED:	TOTAL PROVIDED
WATER CLOSETS = 22	WATER CLOSETS = 34
LAVATORIES = 22	URINALS = 0
DRINKING FOUNTAINS = 4	LAVATORIES = 49
SERVICE SINKS = 1	DRINKING FOUNTAINS = 4
	SERVICE SINKS = 2

DEVOTES 1 HR. RATED PARTITIONS CLOSE-OUT TO  
BOTTOM OF DECKING - CLOSE-OUT PARTITIONS TO  
BE CMU WHERE INDICATED ON STRUCTURAL FOR  
LOAD BEARING CONDITIONS. ALL OTHER INDICATED  
LOCATIONS TO BE CONSTRUCTED OF 1 LAYER  
OF 5/8" FIRE RATED GYP. BOARD EACH SIDE  
ON 6" METAL STUDS @ 16" O.C. STAGGER ALL  
JOINTS & PROVIDE FIRE TAPE SEAL ALL PENETRATIONS  
W/ CONTINUOUS FIRE STOPPING INSULATION  
& OR SEALANT.



1 LIFE SAFETY PLAN  
3/32" = 1'-0"