



KC
drawn by
KP
checked by
MAY 2023
date
revisions

MOORE PUBLIC SCHOOLS
BOARD OF EDUCATION
MOORE, OKLAHOMA



LOCKER ROOM
ADDITION
MOORE WEST
JUNIOR HIGH SCHOOL

sheet no:

P110

OWNERSHIP USE OF DOCUMENTS:
AGP EXPRESSLY RESERVES ITS
COPYRIGHT AND OTHER PROPERTY
RIGHTS OF ALL PLANS AND DRAWINGS
DESIGNED AND/OR PRODUCED. PLANS
AND DRAWINGS ARE NOT TO BE
REPRODUCED IN ANY FORM OR MANNER
WITHOUT THE EXPRESSED WRITTEN
CONSENT OF AGP.

Salas O'Brien
2600 Van Buren St., Suite 2635
Norman, OK 73072
Salas O'Brien Registration: CA# 7058
Expiration Date: 8/30/2025
Salas O'Brien Project Number: 2023-04636-00



GENERAL NOTES

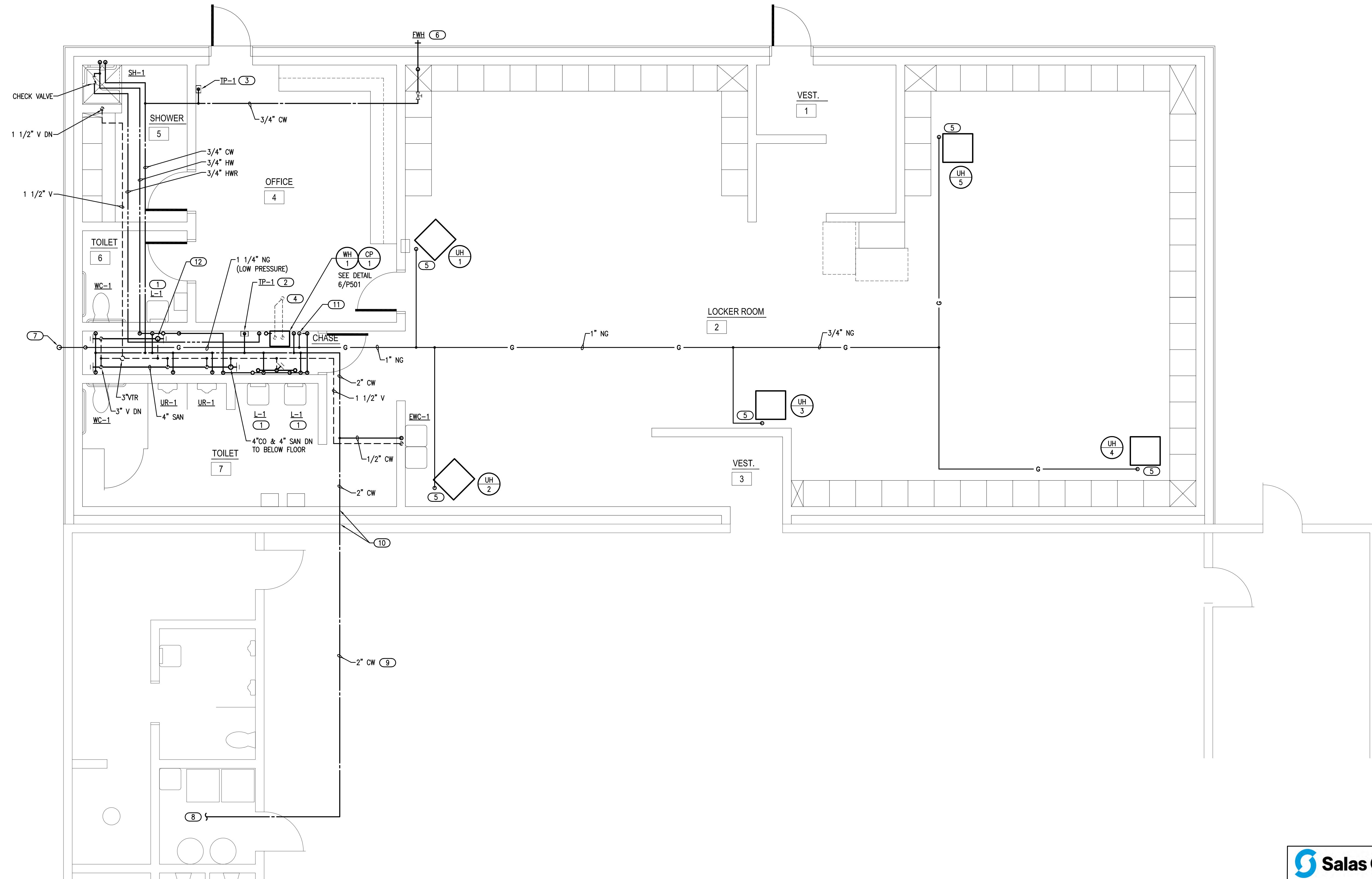
- COORDINATE WORK WITH ALL OTHER TRADES ON SITE.
- PROVIDE WATER HAMMER ARRESTORS (HA) ON WATER LINES TO FLUSH VALVES, SENSOR FAUCETS AND QUICK CLOSING VALVES. LOCATE UNITS IN ACCESSIBLE LOCATIONS.
- SINK AND LAVATORY WATER SUPPLY STUB OUTS SHALL BE COPPER PIPE WITH SUPPORT BRACKET FASTENED IN WALL CAVITY OR CHASE.
- FIRE SEAL ALL PENETRATIONS THRU RATED STRUCTURES TO MAINTAIN FIRE RATING.
- REFER TO PLUMBING FIXTURE SCHEDULE ON SHEET P601 FOR FIXTURE ROUGH-IN PIPE SIZES AND ADDITIONAL SIZES ON ISOMETRIC P401.
- PROVIDE ACCESS PANELS FOR ALL VALVES/DEVICES ABOVE HARD CEILINGS AND BEHIND WALLS.
- ALL GAS PIPE SHALL COMPLY WITH IFGC. BRANCH LINES SHALL TAP OFF TOP OF GAS MAINS AND INSTALL SHUT-OFF VALVE ON BRANCH LINE.
- TRAP PRIMER LINES SHALL BE COPPER TYPE "K" OR PEX-g TUBING WITH CONTINUOUS SLOPE TOWARDS DRAIN CONNECTION.

KEYED NOTES

- INSTALL THERMOSTATIC MIXING VALVE (TMV-1) BELOW LAVATORY. ROUTE HW LINE ALONG CHASE WALL WITHIN 24" OF BRANCH HW LINE TO LAVATORY. SEE DETAIL 5/P501.
- PROVIDE 1/2" CW WITH STRAINER TO TRAP PRIMER (TP-1) IN ACCESSIBLE LOCATION IN CHASE. ROUTE (3) 1/2" LINES FROM DISTRIBUTION UNIT TO (2) FLOOR DRAINS AND FLOOR SINK. COORDINATE POWER WITH EC. SEE DETAIL 1/P501.
- PROVIDE 1/2" CW WITH STRAINER TO TRAP PRIMER (TP-1) IN ACCESSIBLE LOCATION ABOVE LAY-IN CEILING. ROUTE (2) 1/2" LINES FROM DISTRIBUTION UNIT TO FLOOR DRAIN AND SHOWER DRAIN IN THIS AREA. SEE DETAIL 1/P501.
- WATER HEATER 3" CONCENTRIC VENT UP THRU ROOF.
- ROUTE 1/2" NATURAL GAS (LOW PRESSURE) LINE TO UNIT HEATER. PROVIDE BALL VALVE, DRIP LEG, AND FINAL UNIT CONNECTION. COORDINATE CONNECTION WITH MC. SEE DETAIL 8/P501.
- COORDINATE HEIGHT OF EXTERIOR FREEZELESS WALL HYDRANT (FWH) WITH GC AND/OR ARCHITECT. SEAL FIXTURE FLANGE WATERTIGHT.

KEYED NOTES

- ROUTE 1 1/4" NATURAL GAS LINE (350 MBH AT LOW PRESSURE) UP TO MINIMUM 16" ABOVE GRADE WITH GAS SHUT-OFF VALVE AND ROUTE INTO BUILDING. PROVIDE PIPE SLEEVE AT WALL PENETRATION, FIRESEAL AND INSTALL WALL ESCUTCHEON.
- CONNECT NEW 2" CW PIPE WITH BALL VALVE TO EXISTING 2" OR LARGER CW PIPE. REINSTALL PIPE INSULATION AT CONNECT POINT AS REQUIRED. FIELD VERIFY CONNECTION POINT.
- ROUTE NEW INSULATED 2" CW PIPE AS HIGH AS POSSIBLE THRU EXISTING WEIGHT ROOM. FIELD VERIFY ROUTING.
- INSTALL PIPE SLEEVE THRU EXISTING WALL AND NEW WALL FOR NEW 2" CW PIPE. FIRESEAL WALL PENETRATION AND SLEEVE ENDS.
- ROUTE 3/4" NATURAL GAS (LOW PRESSURE) TO WATER HEATER. SEE DETAIL 6/P501.
- ROUTE 4" SANITARY UP FROM BELOW FLOOR WITH 4" SANITARY TO WATER CLOSET, 4" CLEANOUT AND 2" SANITARY UP TO SERVE LAVATORY WITH 2" VENT UP.



1 PLUMBING PLAN - ABOVE GRADE
SCALE: 1/4" = 1'-0"